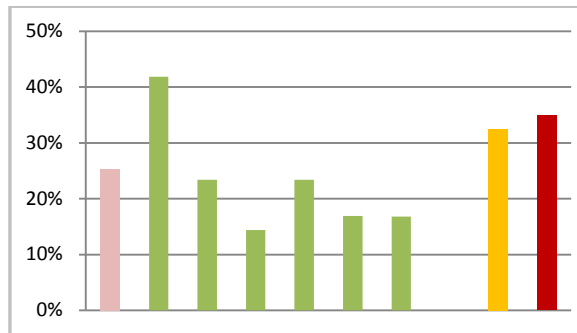
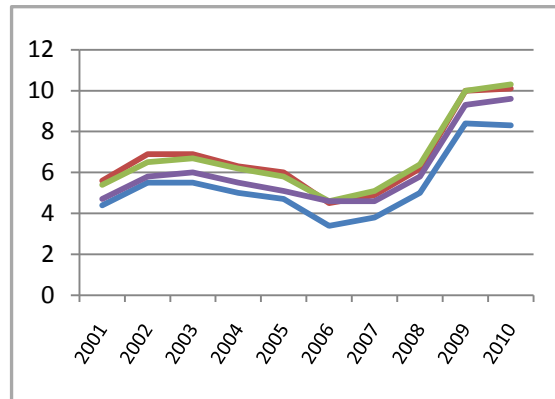
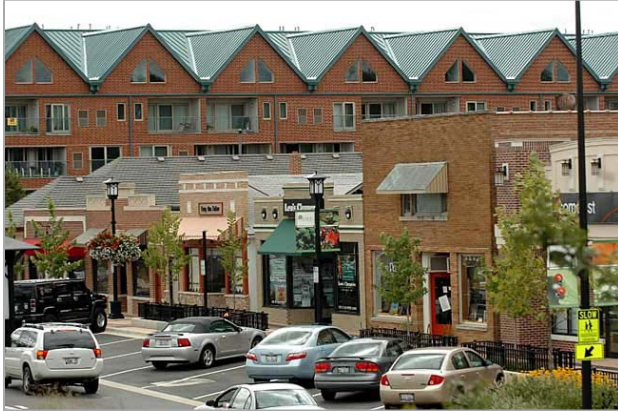


2011 DuPage County Statistical Profile



Department of Economic Development and Planning

2011 DuPage County Statistical Profile

Table of Contents

	Page
Introduction	1
Map 1: Seven-County Northeastern Illinois Region	2
 1. Population	 3
Table 1.1: DuPage County Population: 1970-2010	6
Chart 1.1: DuPage County 1900-2010 Population and 2040 Forecasts	6
Table 1.2: DuPage County 2000-2010 Population Changes (Major Race and Ethnic Groups)	7
Chart 1.2: 2000-2010 Population Changes in Race and Ethnicity	7
Chart 1.3: 2000 and 2010 DuPage Race and Ethnic Groups as Percent of Total Population	8
Table 1.3a: DuPage County Foreign Born Population: 2000 and 2009	8
Table 1.3b: Region of Birth of Foreign Born Population	8
Table 1.4: 2000-2010 DuPage County Township Population (Total and Unincorporated)	9
Chart 1.4: DuPage Townships: 2000-2010 Percent Population Changes	9
Map 2: 2000-2010 Population Changes in DuPage County Townships	10
Map 3: DuPage County 2000-2010 Population Changes by Census Tracts	11
Chart 1.5: 2010 DuPage County Unincorporated Township Population	12
Table 1.5: 2010 Township Area (Total and Unincorporated)	13
Chart 1.6: 2010 DuPage County Municipal and Unincorporated Population	14
Chart 1.7: 2010 DuPage County Municipal and Unincorporated Area	14
Table 1.6: 2010 Township Population by Major Ethnic and Race Groups	15
Table 1.7: 2000 and 2010 Population for DuPage County Municipalities	16
Table 1.8: Municipal Population within DuPage County only (Race and Ethnicity)	18
Table 1.9: Seven-County Region 2000-2010 Population Changes	19
Chart 1.8: Seven-County Region 2000-2010 Percent Population Changes	19
Table 1.10: 2010 Seven-County Population by Ethnic and Race Groups	20
 2. Age Characteristics	 21
Table 2.1: 2000-2010 Changes in Selected DuPage County Age Groups	23
Chart 2.1: Selected Age Groups as Percent of Total Population: 1990-2010	23
Table 2.2: 2010 Population 65 Years and Over and Median Age by Township	24
Chart 2.2: 2010 Percent of Population 65 Years and Over by Township	24
Table 2.3: Selected Demographic Characteristics for DuPage Municipalities	25
Table 2.4: Seven-County Region Population 65 and Over and Median Age	26
Chart 2.3: Seven-County Region Population 65 and Over	26
Chart 2.4: Seven-County Region Median Age	27

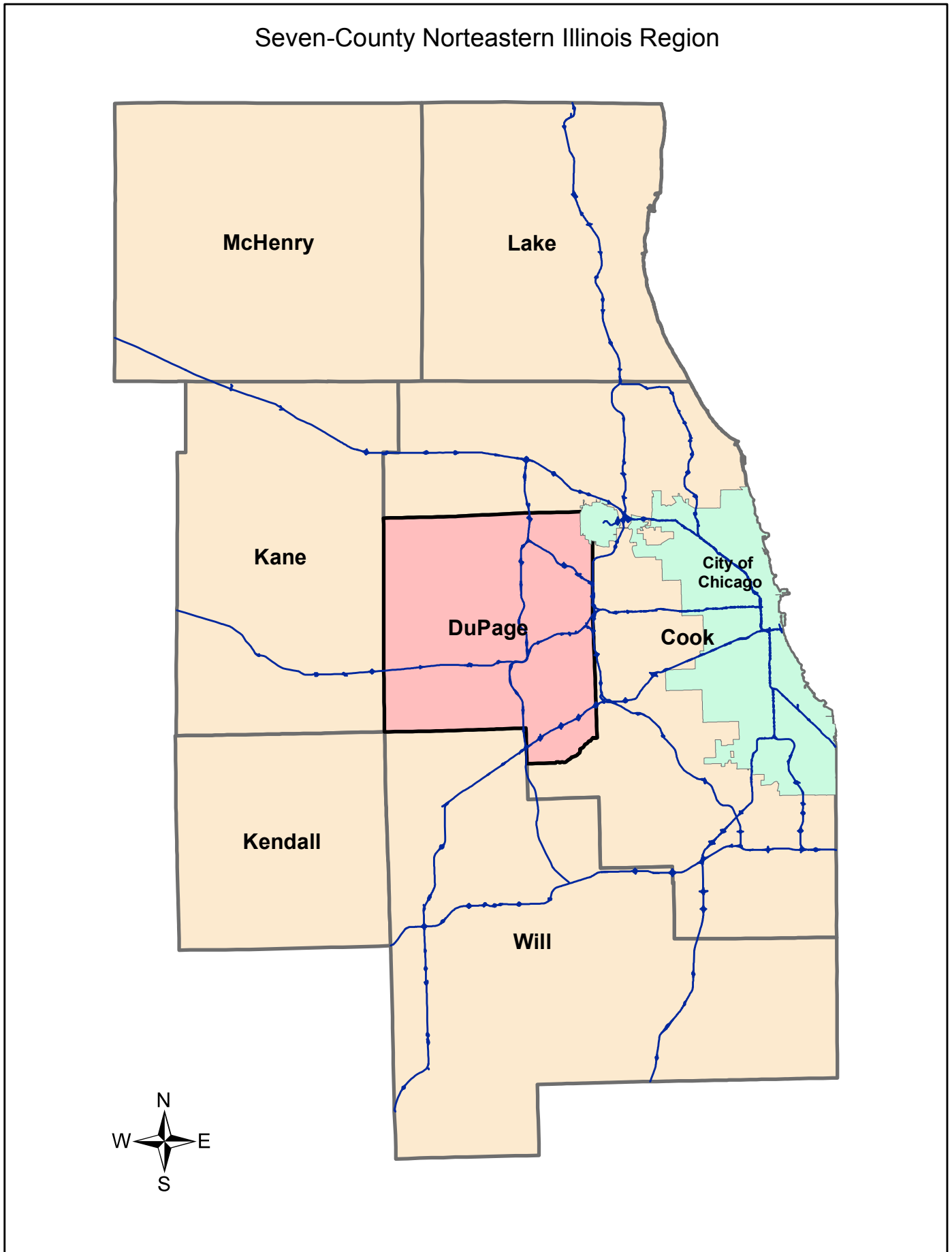
3. Household Characteristics	28
Table 3.1: 2010 Selected DuPage County Household Characteristics	29
Chart 3.1: Average Household Size by Township	30
Table 3.2: Selected Demographic Characteristics for DuPage Municipalities	31
Chart 3.2: Seven-County Region Average Household Size	32
4. Housing Occupancy and Tenure	33
Table 4.1: 2000-2010 Changes in Housing Occupancy and Tenure	35
Table 4.2: 2010 DuPage County Housing Occupancy and Tenure Characteristics	35
Table 4.3: 2010 Township Housing Occupancy and Tenure	36
Chart 4.1: 2010 Residential Vacancy Rates by Township	36
Chart 4.2: 2010 Percent Renter Occupied Housing Units by Township	37
Table 4.4: 2000-2010 Changes in the Number of Housing Units by Township	37
Table 4.5: 2000-2010 Unincorporated Township Changes in Housing Units	38
Table 4.6: 2000-2010 Changes in the Number of Housing Units by Municipality	39
Table 4.7: Selected Demographic Characteristics for DuPage Municipalities	40
Chart 4.3: Residential Vacancy Rates: Seven-County Region, Illinois, U.S.	41
Chart 4.4: Renter Occupied Housing Units: Seven-County Region, Illinois, U.S.	41
5. Economic Activities	42
Table 5.1: DuPage County Number of Jobs by Industry (2009)	43
Table 5.2: Occupation Groups for DuPage County Residents	44
Table 5.3: Educational Attainment (Seven-County Region)	44
Chart 5.1: 2010 Unemployment Rates: Seven-County Region, Illinois, U.S.	45
Chart 5.2: 2001-2010 Annual Unemployment Rates	45
Chart 5.3: Per Capita Personal Income	46
6. Land Use	47
Table 6.1: DuPage County Undeveloped Land: 1995 to 2009	48
Chart 6.1: 2009 DuPage County Existing Land Use	48
7. Transportation	49
Table 7.1: Metra Stations Boardings in DuPage Communities	50
Table 7.2: Means of Transportation to Work	51
Table 7.3: Mean Travel Time to Work	51
8. DuPage County Schools	52
Table 8.1: DuPage Public Schools Summary Information	52
9. Open Space/Recreation Facilities	53

2011 DuPage County Statistical Profile

Introduction

DuPage County, with an area of 336 square miles, is centrally located within the Northeastern Illinois Region, just 20 miles west of Chicago ([Map 1](#)). The County, with 917,000 residents in 2010, has the second largest population (next to Cook County) among all counties in the State of Illinois. DuPage County, with a diverse economy providing over 695,000 jobs, has become a major economic engine for northeastern Illinois. The County offers the benefits of urbanized living, high quality educational systems, a wide variety of housing, extensive areas of open space, recreational resources, and excellent health care facilities in a safe and attractive environment. In addition, DuPage County residents and businesses are in close proximity to O'Hare International Airport, and they have public transit access to downtown Chicago through three Metra commuter rail lines and twenty five Metra stations.

Map 1



2011 DuPage County Statistical Profile

1. Population

In 2010, DuPage County had a population of 916,924, while its 2000 population was 904,161 (U.S. Census Bureau). From 2000 to 2010 the County's population grew by only a 1.4%, or by 12,763 people. In the previous decade, from 1990 to 2000, the population in DuPage County had increased by 15.7% (122,495 people). The slowing down of the rate of increase over the last decade follows the decades of booming growth during the 1970s, '80s and '90s. ([Table 1.1](#)). This trend is indicative of a centrally located within the metropolitan area maturing county, where the available undeveloped land is becoming scarcer and much more expensive. According to the DuPage County 2009 existing land use survey, less than 4% of the total County land remained undeveloped. Despite the slower rate of population growth over the 2000-2010 decade, forecasts by the Chicago Metropolitan Agency for Planning (CMAP) show that DuPage County is going to have a population of approximately 1,150,000 by the year 2040 ([Chart 1.1](#)).

DuPage County Diversity

Although DuPage County's total population changed little since 2000 (it only grew by 1.4%), there were very significant changes in the race and ethnic makeup of the County during that period. The County's population is now much more diverse, and this diversity is spread throughout DuPage. The population of minorities increased by 43% since 2000, and minorities now make up almost 30% of the total population, while they were only 21% of the County's population in the year 2000 ([Table 1.2](#)). The number of Hispanics grew by 40,000 (50%) since 2000, and now over 13% of the County's total population is Hispanic. Asians and African-Americans have been experiencing significant growth also, while the non-Hispanic white population has declined by 10%, and it has seen its share of the County's total population shrink from 79% to about 70% since 2000 ([Table 1.2](#), [Chart 1.2](#) and [Chart 1.3](#)). Based on the Census Bureau's *American Community Survey* 2009 data (most current available), 18.4% of DuPage County residents were foreign born in 2009, while in the year 2000 the share of foreign born was 15.3% ([Table 1.3a](#) and [Table 1.3b](#)).

DuPage County Townships

DuPage County is comprised of nine townships ([Map 2](#)). According to the 2009 DuPage County land use survey most of the county's undeveloped land was in the three western townships – Naperville, Winfield and Wayne. Those were also the only townships that had significant population gains during the 2000-2010 period ([Table 1.4](#), [Chart 1.4](#)). The larger population gains in the western-most parts of the County are clearly shown in [Map 3](#) "*DuPage County 2000-2010 Population Changes by Census Tracts*". Naperville Township experienced the largest growth by far, with a population increase of 14,283 since 2000 (17%). Wayne grew by 2,806 and Winfield by 1,078 people. Addison and Bloomingdale townships saw very little change during the past decade, while Downers Grove, Lisle, Milton and York had small population losses (all of them around -1%).

The 2010 population in unincorporated DuPage County was 97,758, down 6% from the year 2000. Among all townships, Milton and Downers Grove had the largest unincorporated population, while Naperville and Wayne had the smallest ([Table 1.4](#) and [Chart 1.5](#)). The total area of the unincorporated

land of DuPage County was 58,434 acres ([Table 1.5](#)). Included in the unincorporated area are approximately 19,500 acres of DuPage Forest Preserve District land. In 2010, unincorporated DuPage had 11% of the County's total population, and 27% of the total County area ([Chart 1.6](#) and [Chart 1.7](#)).

As [Table 1.6](#) and [Map 2](#) show, Addison Township had the largest number of Hispanics (28,225) or 32% of its total population, and Winfield had the largest percentage of Hispanics, 36% (or 16,638). Naperville had the largest number as well as the highest percentage of African-Americans (8,258 and 8.3% correspondingly). Bloomingdale Township had the most Asians (15,671) with Naperville Township a close second (15,484). Naperville also had the largest percentage of Asian population (15.5%).

DuPage County Municipalities

DuPage County contains a total of 39 municipalities, of which 20 lie wholly within the County's boundaries. [Table 1.7](#) includes the 2000-2010 numeric and percent changes for the total municipal population as well as the population that is within DuPage County only. Aurora (the whole city) gained almost 50,000 new residents (10,500 of them within DuPage), by far the largest increase among all DuPage communities. Aurora, with a population of 197,899 is the second largest city in Illinois after Chicago. Naperville, with a 2010 population of 141,853 is now the fourth largest (after Rockford and Joliet). Naperville as a whole grew by 13,495 people (10.5%) since 2000. The city's DuPage population grew from 91,000 to 94,500, or by 4% in the same period. On the other hand, Wheaton's population declined by 2,522 (4.6%), and Bensenville's by 2,351 (11.4%) from 2000 to 2010.

Data from the 2010 census show that over the last ten years, the population of all DuPage municipalities has become increasingly diverse. Minorities have been attracted to DuPage municipalities by the same quality of life factors that have been responsible for population growth there in the past, namely jobs, diversified housing opportunities, and excellent schools.

[Table 1.8](#) lists the DuPage municipalities, and the 2000-2010 percent changes in the major racial and ethnic groups of the population that lies within DuPage County only. The table shows that the population growth in every municipality with only two exceptions (Wayne and Clarendon Hills) was due to significant increases in minorities, and particularly in Hispanics and Asians. The communities with the largest growth in total population, such as Aurora and West Chicago also experienced the highest increases in minority populations. Naperville's population within DuPage County increased by 4% from 2000 to 2010, and that increase is entirely attributed to large increases in all three major minority groups. During the same period, Naperville's non-Hispanic white population declined by 7%.

Northeastern Illinois Region

[Table 1.9](#) and [Chart 1.8](#) show the 2000-2010 population changes for the seven-county northeastern Illinois region and for the City of Chicago. Over the last ten years, the outlying counties of the region where significant quantities of acres of developable land are still available experienced high growth rates. People were attracted by the large number of new housing developments that were built there, and by the relatively lower housing costs. From 2000 to 2010, Kendall County's population more than doubled, Will County grew by 175,000 people, and Kane County gained 111,000 new residents. On the other hand, during the 2000-2010 period, DuPage County grew only by 1.4%, while the population of Cook County as a whole decreased by 3.4%. The City of Chicago lost 200,000 residents (- 6.9%), and suburban Cook County grew by only 0.7%. This pattern of migration from the inner hub of the region to

the suburbs of the outer fringes is representative of what has been occurring in metro areas throughout the U.S. over the last decade.

[Table 1.10](#) includes the 2010 ethnic and racial breakdown for the seven counties in the region. Overall, the region's population was 53.2% non-Hispanic white, 21.6% Hispanic, 17.4% non-Hispanic African-American, and 6.1% Asian.

Appendix 1 – Population Tables and Charts

Table 1.1: DuPage County Population: 1970 to 2010

	Population	10-year population change	10-year percent population change
1970	487,966		
1980	658,835	170,869	35.0%
1990	781,666	122,831	18.6%
2000	904,161	122,495	15.7%
2010	916,924	12,763	1.4%

Chart 1.1: DuPage County 1900-2010 Population and 2040 Forecasts by CMAP

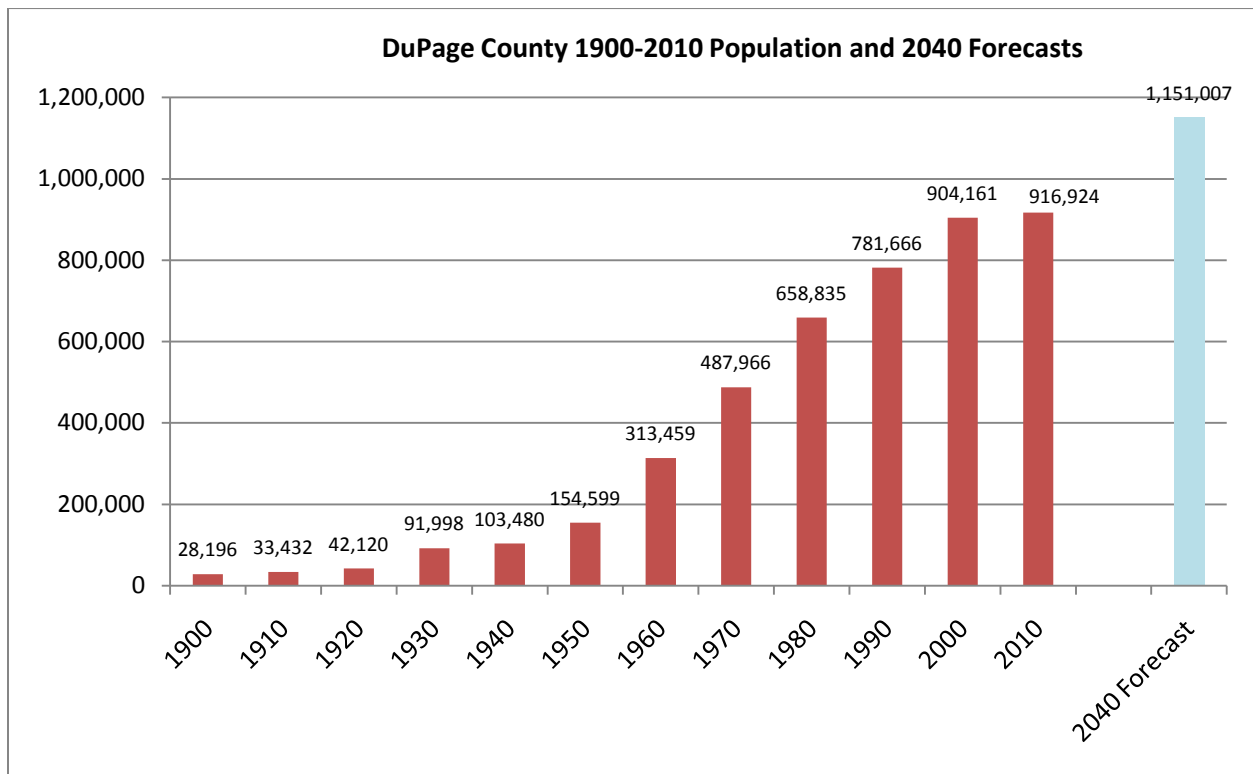


Table 1.2: DuPage County 2000-2010 Population Changes (Major Race and Ethnic Groups)

	Census 2000		Census 2010		2000 - 2010 Change	
	Number	Percent of total	Number	Percent of total	Number	Percent of total
Total Population	904,161	100.0%	916,924	100.0%	12,763	1.4%
Hispanic	81,366	9.0%	121,506	13.3%	40,140	49.3%
Non-Hispanic White	714,654	79.0%	646,130	70.5%	-68,524	-9.6%
Non-Hisp. African-American	27,206	3.0%	41,024	4.5%	13,818	50.8%
Non-Hispanic Asian	72,034	8.0%	91,793	10.0%	19,759	27.4%
Non-Hispanic Others	8,901	1.0%	16,471	1.8%	7,570	85.0%
All Minorities	189,507	21.0%	270,794	29.5%	81,287	42.9%

Chart 1.2: 2000-2010 Population Changes in DuPage County Race and Ethnic Groups

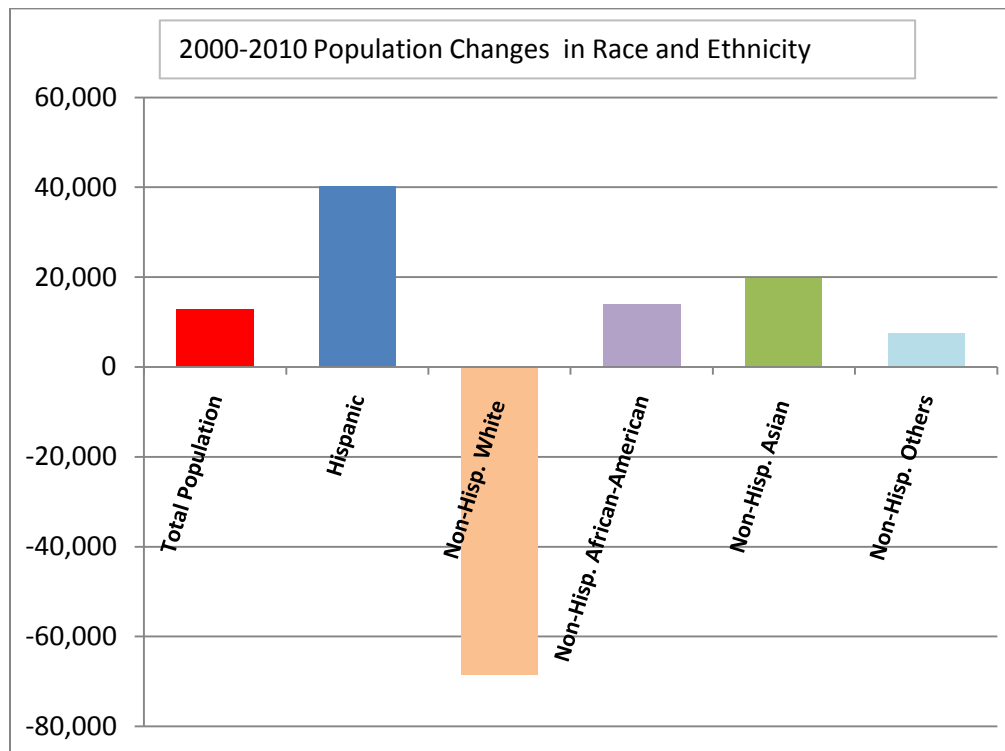


Chart 1.3: 2000 and 2010 DuPage County Ethnic and Race Groups as Percent of Total Population

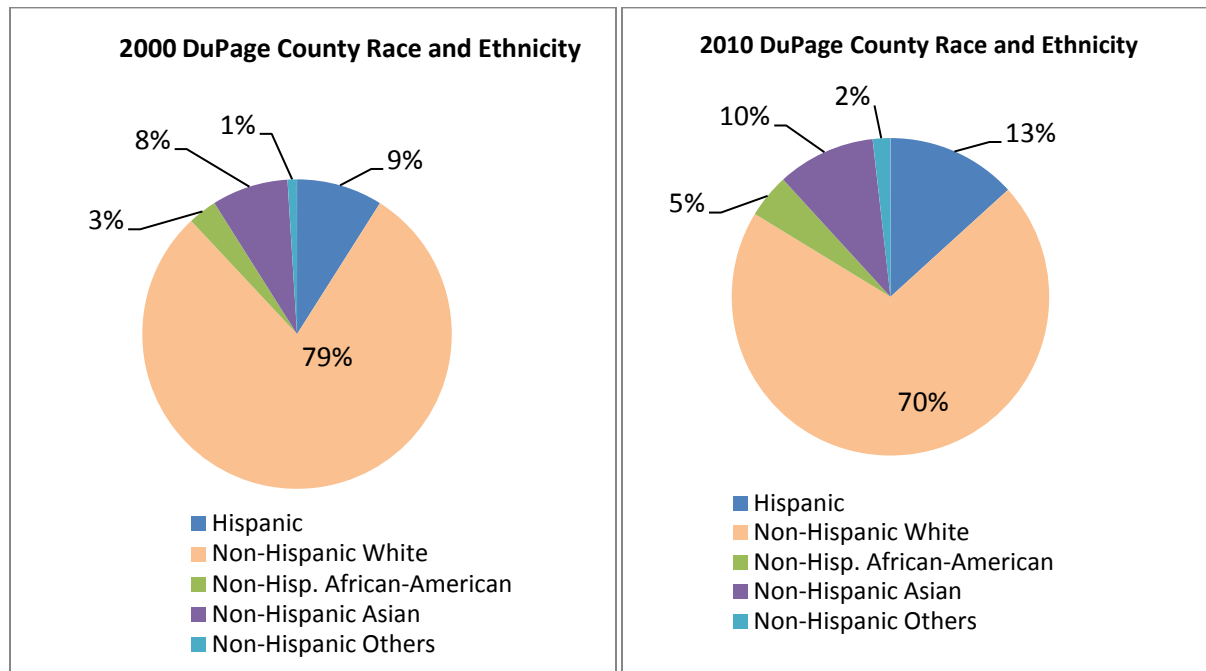


Table 1.3a: DuPage County Foreign Born Population (as Percent of Total Population): 2000 and 2009*

	2000	2009
Percent Foreign Born	15.3	18.4

Table 1.3b: 2009 Region of Birth of Foreign Born as Percent of Total Foreign Born Population*

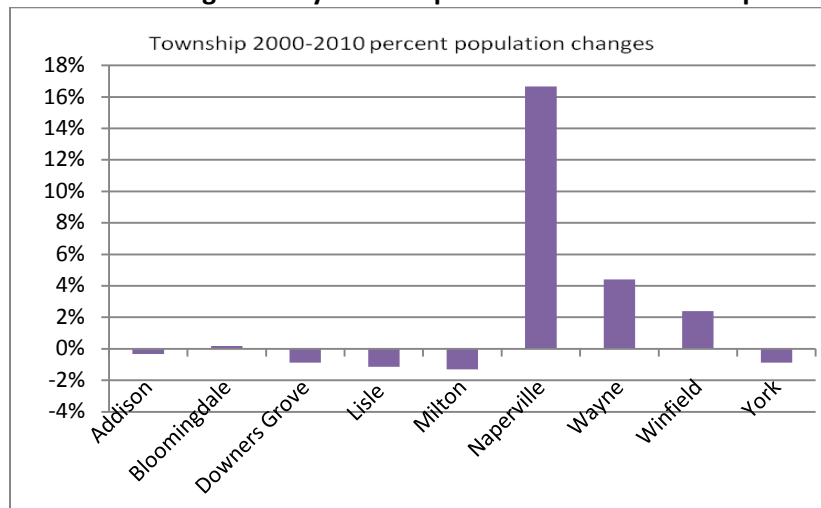
	Percent of All Foreign Born
Europe	26.7%
Asia	39.9%
Africa	2.3%
Oceania	0.1%
Latin America	30.1%
Northern America	0.9%

*Source: 2009 American Community Survey

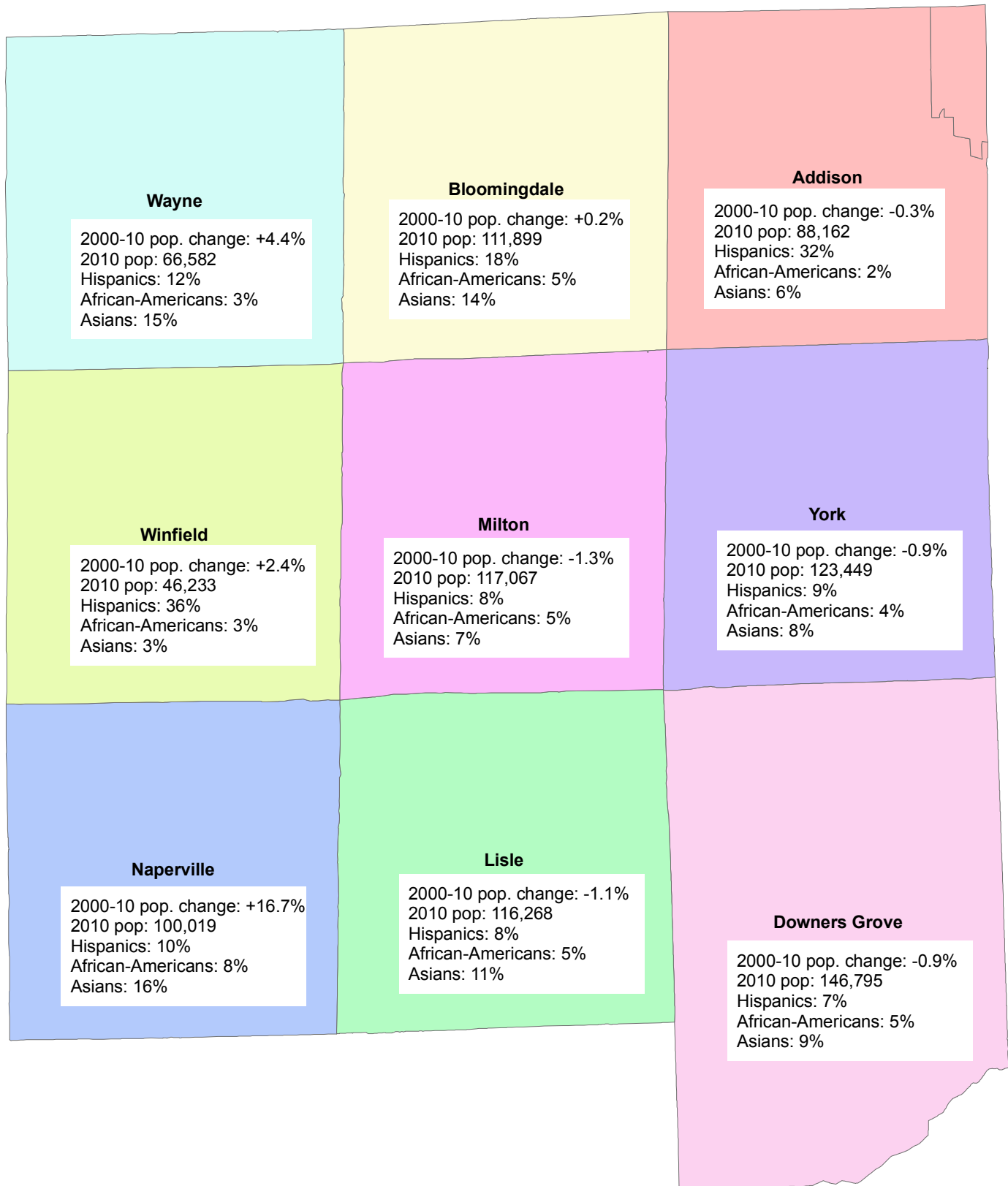
Table 1.4: DuPage County Townships Population (Total and Unincorporated): 2000-2010

	2010 Census	2000 Census	2000-2010 Change	2000-2010 % Change
DuPage County total	916,924	904,161	12,763	1.4%
Unincorp. DuPage	97,758	104,075	-6,317	-6.1%
Addison Township total	88,612	88,900	-288	-0.3%
Unincorp. Addison	5,875	5,830	45	0.8%
Bloomington Township	111,899	111,709	190	0.2%
Unincorp. Bloomington	9,529	10,012	-483	-4.8%
Downers Grove Township total	146,795	148,110	-1,315	-0.9%
Unincorp. Downers Grove	19,298	21,294	-1,996	-9.4%
Lisle Township total	116,268	117,604	-1,336	-1.1%
Unincorp. Lisle	13,844	15,649	-1,805	-11.5%
Milton Township total	117,067	118,616	-1,549	-1.3%
Unincorp. Milton	22,459	23,077	-618	-2.7%
Naperville Township total	100,019	85,736	14,283	16.7%
Unincorp. Naperville	3,984	3,788	196	5.2%
Wayne Township total	66,582	63,776	2,806	4.4%
Unincorp. Wayne	4,466	4,721	-255	-5.4%
Winfield Township total	46,233	45,155	1,078	2.4%
Unincorp. Winfield	7,134	7,517	-383	-5.1%
York Township total	123,449	124,553	-1,104	-0.9%
Unincorp. York	11,169	12,187	-1,018	-8.4%

Chart 1.4: DuPage County Townships: 2000-2010 Percent Population Changes



Map 2: DuPage County Townships: 2000-2010 Population Changes, and 2010 Population Characteristics



Map 3: DuPage County 2000-2010 Population Changes by Census Tracts

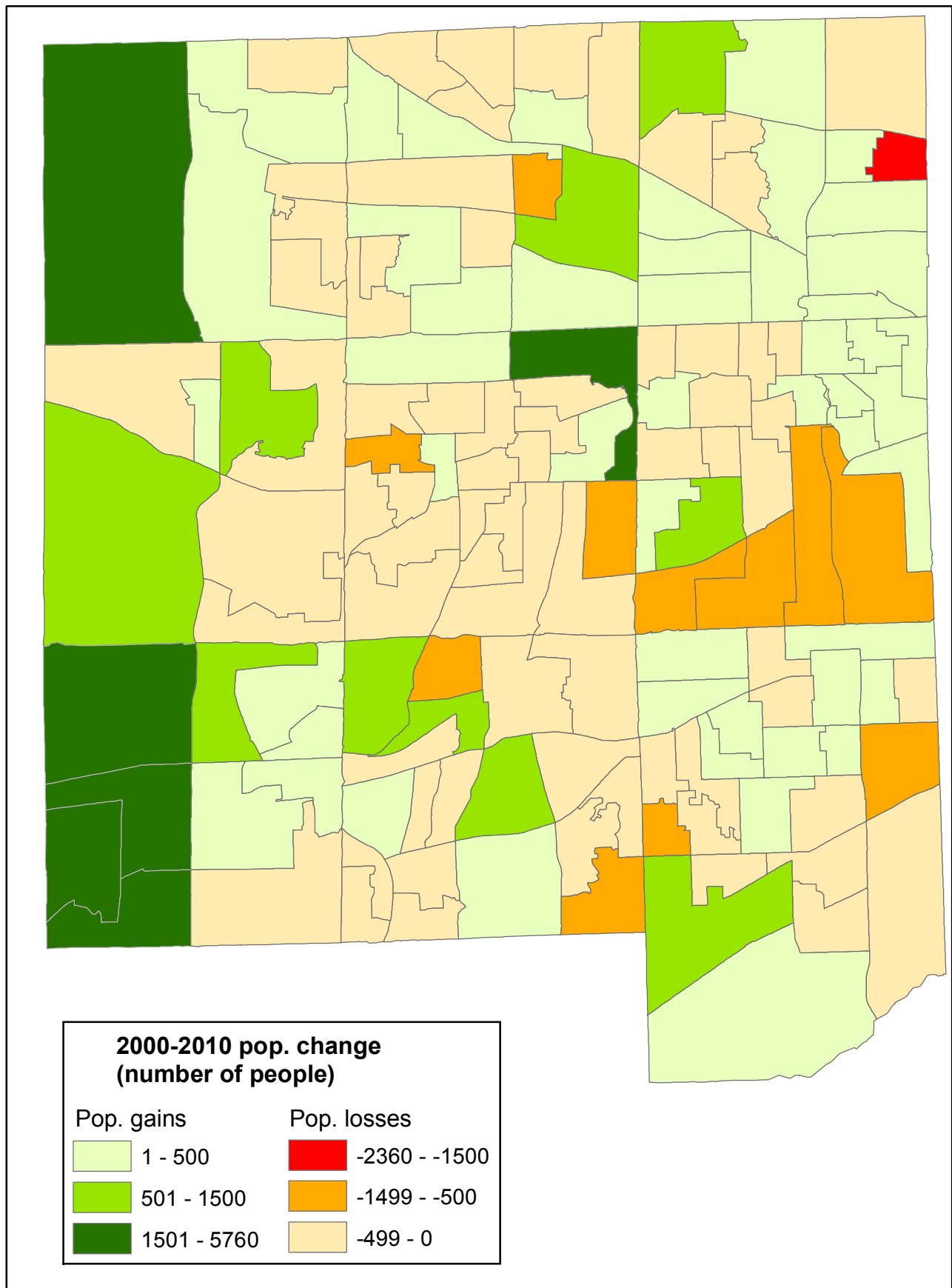


Chart 1.5: DuPage County Townships: 2010 Unincorporated Population

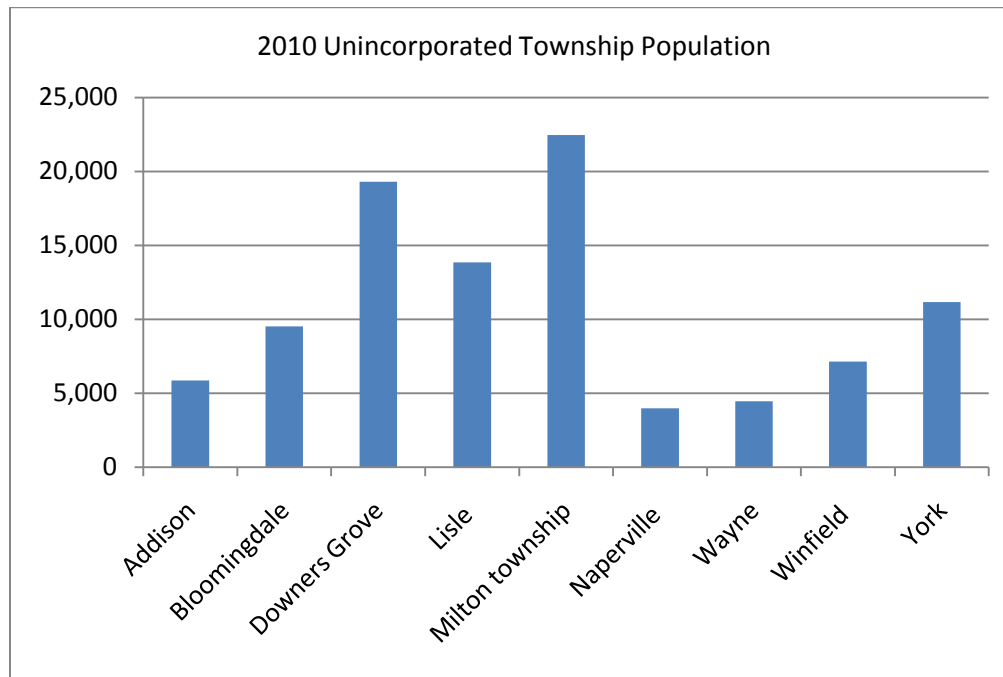


Table 1.5: 2010 Township Area (Total and Unincorporated*)

	Acres	Square Miles	Uninc. Area as Percent of Total Township Area
Addison Township total	20,740	32.41	
Unincorp. Addison	2,920	4.56	14.1%
City of Chicago (O'Hare)	1,456	2.28	
Bloomington Township total	22,580	35.28	
Unincorp. Bloomington	5,289	8.26	23.4%
Downers Grove Township total	32,578	50.90	
Unincorp. Downers Grove	9,205	14.38	28.3%
Lisle Township total	23,011	35.96	
Unincorp. Lisle	6,308	9.86	27.4%
Milton Township total	22,565	35.26	
Unincorp. Milton	7,875	12.31	34.9%
Naperville Township total	22,957	35.87	
Unincorp. Naperville	4,236	6.62	18.4%
Wayne Township total	23,351	36.49	
Unincorp. Wayne	7,597	11.87	32.5%
Winfield Township total	23,153	36.18	
Unincorp. Winfield	12,811	20.02	55.3%
York Township total	22,821	35.66	
Unincorp. York	2,192	3.43	9.6%
DuPage County Total area	215,212	336.27	
Unincorp. DuPage Area	58,434	91.30	27.2%

*The unincorporated area includes approximately 19,500 acres of DuPage Forest Preserve District land.

Chart 1.6: 2010 DuPage County Population: Municipal and Unincorporated

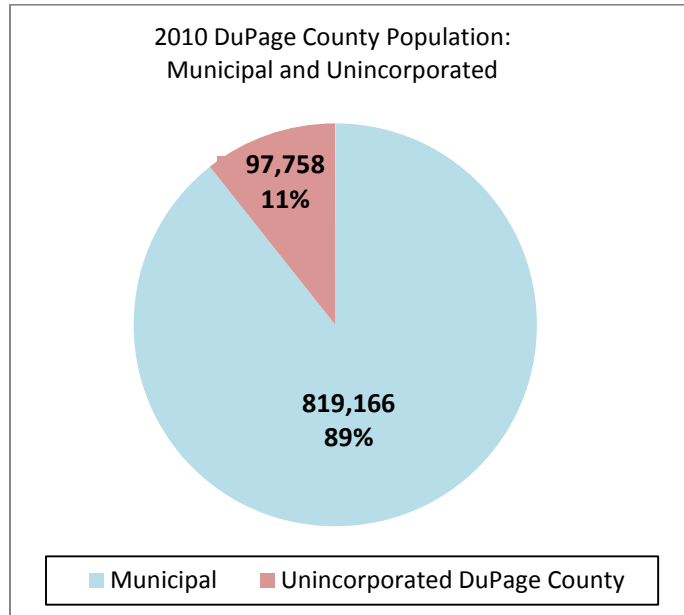
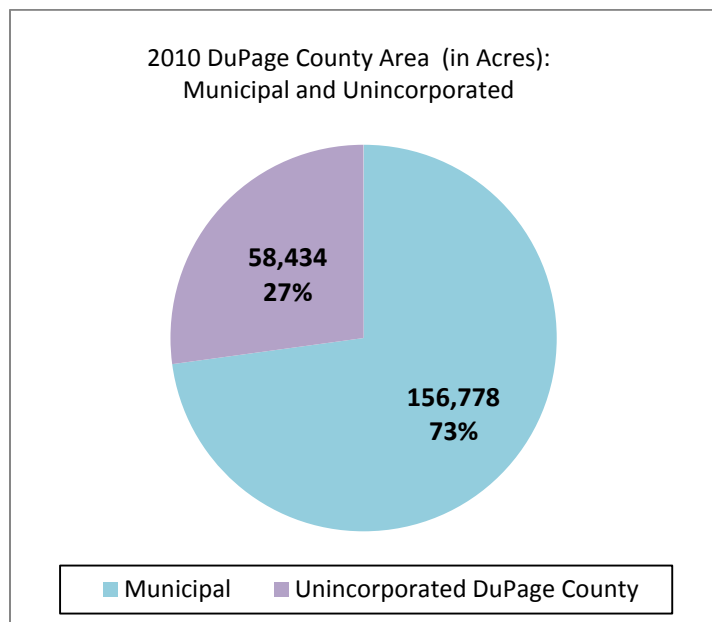


Chart 1.7: 2010 DuPage Area (in Acres): Municipal and Unincorporated*



*The unincorporated area includes approximately 19,500 acres of DuPage Forest Preserve District land.

Table 1.6: 2010 Township Population by Major Ethnic and Race Groups

	Total Population	Hispanic or Latino		Not Hispanic White alone		Not Hispanic African-American alone		Not Hispanic Asian alone	
		Number	%	Number	%	Number	%	Number	%
Addison	88,612	28,225	31.9%	51,928	58.6%	1,788	2.0%	5,524	6.2%
Bloomingtondale	111,899	19,968	17.8%	68,848	61.5%	5,317	4.8%	15,671	14.0%
Downers Grove	146,795	9,592	6.5%	114,704	78.1%	6,679	4.5%	13,342	9.1%
Lisle	116,268	8,895	7.7%	86,616	74.5%	5,940	5.1%	12,636	10.9%
Milton	117,067	9,170	7.8%	92,303	78.8%	5,433	4.6%	7,981	6.8%
Naperville	100,019	9,765	9.8%	63,927	63.9%	8,258	8.3%	15,484	15.5%
Wayne	66,582	8,104	12.2%	45,791	68.8%	1,843	2.8%	9,681	14.5%
Winfield	46,233	16,638	36.0%	26,455	57.2%	1,243	2.7%	1,261	2.7%
York	123,449	11,149	9.0%	95,558	77.4%	4,523	3.7%	10,213	8.3%
DuPage County Totals	916,924	121,506	13.3%	646,130	70.5%	41,024	4.5%	91,793	10.0%

Table 1.7: 2000 and 2010 Population for DuPage County Municipalities

	Census 2000	Census 2010	Change 2000-2010	% Change 2000-2010
Addison	35,914	36,942	1,028	2.9%
Aurora	142,990	197,899	54,909	38.4%
<i>DuPage part</i>	<i>38,905</i>	<i>49,433</i>	<i>10,528</i>	<i>27.1%</i>
Bartlett	36,706	41,208	4,502	12.3%
<i>DuPage part</i>	<i>24,508</i>	<i>24,411</i>	<i>-97</i>	<i>-0.4%</i>
Bensenville	20,703	18,352	-2,351	-11.4%
<i>DuPage part</i>	<i>20,703</i>	<i>18,352</i>	<i>-2,351</i>	<i>-11.4%</i>
Bloomington	21,675	22,018	343	1.6%
Bolingbrook	56,321	73,366	17,045	30.3%
<i>DuPage part</i>	<i>1,748</i>	<i>1,571</i>	<i>-177</i>	<i>-10.1%</i>
Burr Ridge	10,408	10,559	151	1.5%
<i>DuPage part</i>	<i>6,785</i>	<i>6,719</i>	<i>-66</i>	<i>-1.0%</i>
Carol Stream	40,438	39,711	-727	-1.8%
Clarendon Hills	7,610	8,427	817	10.7%
Darien	22,860	22,086	-774	-3.4%
Downers Grove	48,724	47,833	-891	-1.8%
Elk Grove Village	34,727	33,127	-1,600	-4.6%
<i>DuPage part</i>	<i>0</i>	<i>0</i>	<i>0</i>	
Elmhurst	42,762	44,121	1,359	3.2%
<i>DuPage part</i>	<i>42,762</i>	<i>44,121</i>	<i>1,359</i>	<i>3.2%</i>
Glendale Heights	31,765	34,208	2,443	7.7%
Glen Ellyn	26,999	27,450	451	1.7%
Hanover Park	38,278	37,973	-305	-0.8%
<i>DuPage part</i>	<i>17,523</i>	<i>17,337</i>	<i>-186</i>	<i>-1.1%</i>
Hinsdale	17,349	16,816	-533	-3.1%
<i>DuPage part</i>	<i>15,209</i>	<i>14,589</i>	<i>-620</i>	<i>-4.1%</i>
Itasca	8,302	8,649	347	4.2%
Lemont	13,098	16,000	2,902	22.2%
<i>DuPage part</i>	<i>6</i>	<i>10</i>	<i>4</i>	<i>66.7%</i>
Lisle	21,182	22,390	1,208	5.7%

Table 1.7 (continued): 2000 and 2001 Population for DuPage County Municipalities

	Census 2000	Census 2010	Change 2000-2010	% Change 2000-2010
Lombard	42,322	43,165	843	2.0%
Naperville	128,358	141,853	13,495	10.5%
<i>DuPage part</i>	<i>90,984</i>	<i>94,533</i>	<i>3,549</i>	<i>3.9%</i>
Oak Brook	8,702	7,883	-819	-9.4%
<i>DuPage part</i>	<i>8,702</i>	<i>7,876</i>	<i>-826</i>	<i>-9.5%</i>
Oakbrook Terrace	2,300	2,134	-166	-7.2%
Roselle	23,115	22,763	-352	-1.5%
<i>DuPage part</i>	<i>19,655</i>	<i>19,040</i>	<i>-615</i>	<i>-3.1%</i>
St. Charles	27,896	32,974	5,078	18.2%
<i>DuPage part</i>	<i>169</i>	<i>543</i>	<i>374</i>	<i>221.3%</i>
Villa Park	22,075	21,904	-171	-0.8%
Warrenville	13,363	13,140	-223	-1.7%
Wayne	2,137	2,431	294	13.8%
<i>DuPage part</i>	<i>1,303</i>	<i>1,570</i>	<i>267</i>	<i>20.5%</i>
West Chicago	23,469	27,086	3,617	15.4%
Westmont	24,554	24,685	131	0.5%
Wheaton	55,416	52,894	-2,522	-4.6%
Willowbrook	8,967	8,540	-427	-4.8%
Winfield	8,718	9,080	362	4.2%
Wood Dale	13,535	13,770	235	1.7%
Woodridge	30,934	32,971	2,037	6.6%
<i>DuPage part</i>	<i>30,934</i>	<i>32,949</i>	<i>2,015</i>	<i>6.5%</i>

**Table 1.8: Municipal Population within DuPage County only:
2000-2010 Percent Changes in Race and Ethnicity (in descending order of total population increase)**

		Percent Change from 2000				
	Total Pop. 2010	Total Pop.	Hispanic	Not Hisp. White	Not Hisp. African- American	Not Hisp. Asian
Aurora	49,433	27.1%	145.3%	-3.5%	82.0%	170.2%
Wayne	1,570	20.5%	11.4%	20.1%	100.0%	55.6%
West Chicago	27,086	15.4%	21.3%	-2.6%	77.9%	253.6%
Clarendon Hills	8,427	10.7%	136.7%	3.8%	126.6%	61.2%
Glendale Heights	34,208	7.7%	79.9%	-22.8%	29.8%	19.4%
Woodridge	32,949	6.5%	55.7%	-3.4%	17.1%	17.9%
Lisle	22,390	5.7%	45.3%	-3.3%	67.0%	29.9%
Itasca	8,649	4.2%	58.2%	-2.7%	25.7%	50.2%
Winfield	9,080	4.2%	111.2%	-0.6%	28.7%	18.4%
Naperville	94,533	3.9%	74.2%	-7.0%	68.2%	40.4%
Elmhurst	44,121	3.2%	68.8%	-3.0%	110.1%	43.7%
Addison	36,942	2.9%	45.3%	-18.5%	55.0%	-4.6%
Lombard	43,165	2.0%	73.3%	-7.9%	71.1%	41.6%
Wood Dale	13,770	1.7%	58.1%	-10.2%	122.5%	64.2%
Glen Ellyn	27,450	1.7%	41.3%	-3.4%	37.9%	39.0%
Bloomington	22,018	1.6%	78.4%	-9.2%	42.1%	45.3%
Westmont	24,685	0.5%	60.9%	-10.5%	61.0%	5.0%
Bartlett	24,411	-0.4%	53.0%	-8.6%	14.4%	47.8%
Villa Park	21,904	-0.8%	40.6%	-12.2%	146.7%	40.4%
Burr Ridge	6,719	-1.0%	39.6%	-9.1%	114.7%	29.4%
Hanover Park	17,337	-1.1%	50.8%	-26.5%	32.5%	28.4%
Warrenville	13,140	-1.7%	104.0%	-17.4%	64.8%	5.2%
Carol Stream	39,711	-1.8%	38.9%	-15.0%	38.1%	28.5%
Downers Grove	47,833	-1.8%	41.3%	-5.0%	52.4%	-5.4%
Roselle	19,040	-3.1%	53.6%	-8.9%	60.7%	8.8%
Darien	22,086	-3.4%	66.8%	-8.6%	59.0%	-1.1%
Hinsdale	14,589	-4.1%	55.1%	-8.7%	52.1%	45.2%
Wheaton	52,894	-4.6%	29.4%	-8.8%	52.4%	1.0%
Willowbrook	8,540	-4.8%	27.5%	-13.2%	87.8%	29.3%
Oakbrook Terrace	2,134	-7.2%	135.8%	-20.5%	83.3%	4.3%
Oak Brook	7,876	-9.5%	63.0%	-16.8%	29.4%	4.6%
Bolingbrook	1,571	-10.1%	36.1%	-13.4%	-27.9%	4.3%
Bensenville	18,352	-11.4%	14.2%	-27.1%	9.9%	-33.3%

Table 1.9: Seven-County Region 2000-2010 Population Changes

	2010	2000	2000-10 Change	2000-10 %Change
DuPage	916,924	904,161	12,763	1.40%
Cook	5,194,675	5,376,741	-182,066	-3.40%
<i>City of Chicago</i>	<i>2,695,598</i>	<i>2,896,016</i>	<i>-200,418</i>	<i>-6.90%</i>
<i>Suburban Cook</i>	<i>2,499,077</i>	<i>2,480,725</i>	<i>18,352</i>	<i>0.70%</i>
Kane	515,269	404,119	111,150	27.50%
Kendall	114,736	54,544	60,192	110.40%
Lake	703,462	644,356	59,106	9.20%
McHenry	308,760	260,077	48,683	18.70%
Will	677,560	502,266	175,294	34.90%
Seven-County Region	8,431,386	8,146,264	285,122	3.50%

Chart 1.8: Seven-County Region 2000-2010 Percent Population Changes

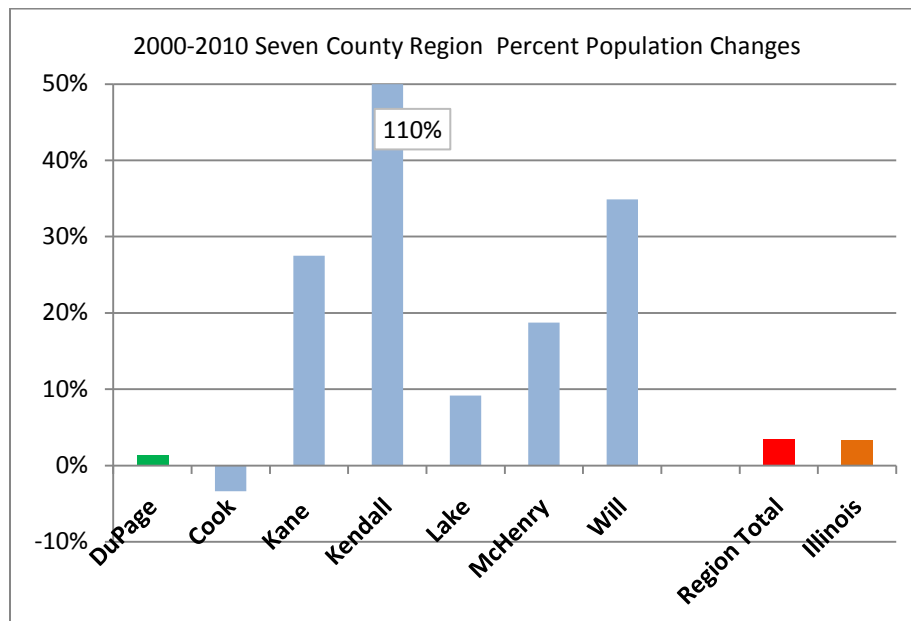


Table 1.10: 2010 Seven-County Region Population by Percent of Ethnic and Race Groups

	Total Pop10	Hispanic	Not Hisp. White	Not Hisp. African American	Not Hisp. Asian	Not Hisp. Other
DuPage	916,924	13.3%	70.5%	4.5%	10.0%	1.8%
Cook	5,194,675	24.0%	43.9%	24.4%	6.1%	1.7%
<i>City of Chicago</i>	2,695,598	28.9%	31.7%	32.4%	5.4%	1.7%
<i>Suburban Cook</i>	2,499,077	18.6%	57.0%	15.7%	7.0%	1.7%
Kane	515,269	30.7%	59.0%	5.4%	3.4%	1.5%
Kendall	114,736	15.6%	74.2%	5.5%	3.0%	1.7%
Lake	703,462	19.9%	65.2%	6.7%	6.2%	2.0%
McHenry	308,760	11.4%	83.7%	1.0%	2.5%	1.4%
Will	677,560	15.6%	67.2%	11.0%	4.5%	1.7%
Seven-County Region	8,431,386	21.6%	53.2%	17.4%	6.1%	1.7%

2011 DuPage County Statistical Profile

2. Age Characteristics

DuPage County

[Table 2.1](#) represents 2000-2010 changes in total population and in the population of selected age groups for DuPage County. The data shown in the table indicate that the County's population in 2010 was considerably older than the 2000 population. Although the total population increased by only 1.4% from 2000 to 2010, the 65 and over group grew by 19.8% (from 88,794 to 106,398) during the same period. Also, the older working-age population group (45 to 64 years) grew by 27.3%, primarily due to the aging of the Baby Boom population. The rapid growth rate of this group means that there will be significant increases in the 65 and over population down the road. On the other hand, the numbers of the younger working-age group (18 to 44 years) declined by 12.7%, and the under 18 population decreased by 6%. As a result of the aging of the County's population described above, the median age increased from 35.2 in 2000 to 38.2 in 2010.

[Chart 2.1](#) depicts the age groups shown in Table 2.1 as a percent share of the County's total population in 1990, 2000 and 2010. Since 1990, there has been a significant increase in the share of the older age categories - the 45 to 64 and the 65 and over groups. It is also important to note that the share of the younger working-age group (18 to 44) decreased significantly, from 46.3% in 1990 to 40.6% in 2000 and to 35.0% in 2010. The percentage of the 65 and over group increased from 8.7% in 1990, to 9.8% in 2000, and to 11.6% in 2010.

DuPage Townships

The townships with the largest numbers of seniors (65 years and over) in 2010, were Downers Grove with 21,036 (14.3% of total population), and York with 19,439 or 15.7% of that township's total population ([Table 2.2](#) and [Chart 2.2](#)). Wayne (7.3%) and Naperville (7.8%) had the smallest percentage of seniors. Downers Grove (42.0) had the highest median age, while Naperville Township the lowest (34.0).

DuPage Municipalities

[Table 2.3](#) shows selected age and other 2010 demographic profile characteristics for DuPage County municipalities (the data represents the total population of each municipality including the parts that might be outside DuPage County). Among all DuPage municipalities, Oak Brook had the highest percentage of people 65 years old and over (29.3%), followed by Willowbrook (21.4%) and Burr Ridge (20%). The same communities also had the highest median age values. Hanover Park (6.1%), West Chicago (6.2%), Bolingbrook (6.3%) and Aurora (6.5%) had the lowest percentages of senior citizens and the lowest median age values. It is worth noting that the communities with the lowest percentages of senior citizens and the lowest median age also had some of the highest percentages of Hispanics among

their population, confirming the fact that the Hispanic population tends to be much younger than all other ethnic and race groups.

Region

Within the seven-county northeastern Illinois region, Cook County had the highest percentage of population 65 years and older (11.9%), and DuPage County had the second highest percentage of seniors (11.6%) ([Table 2.4](#), [Chart 2.3](#), and [Chart 2.4](#)). Kendall County had the smallest percentage of people 65 and over (7.3%) as well as the lowest median age in the region (32.9). This could be attributed mainly to the fact that Kendall's population more than doubled from 2000 to 2010, and that the great majority of the new residents were of relatively younger age (in 2000, Kendall's population of 65 and over was 8.5%, and its median age was 34.0). DuPage County's median age of 38.2 was the highest in the region, and higher than that of Illinois and the United States. However, the State of Illinois and the nation as a whole had higher percentages of people 65 and over than any of the seven counties in the northeastern Illinois region.

Appendix 2 – Age Characteristics Tables and Charts

Table 2.1: 2000-2010 Population Changes in Selected DuPage County Age Groups

	2000	2010	2000-2010 Change	2000-2010 %Change
Total Population	904,161	916,924	12,763	1.40%
Under 18	241,832	227,430	-14,402	-6.00%
18 to 44	367,535	320,832	-46,703	-12.70%
45 to 64	206,000	262,264	56,264	27.30%
65 and over	88,794	106,398	17,604	19.80%
Median age	35.2	38.2		

Chart 2.1: Selected DuPage County Age Groups as Percent of Total Population: 1990, 2000, 2010

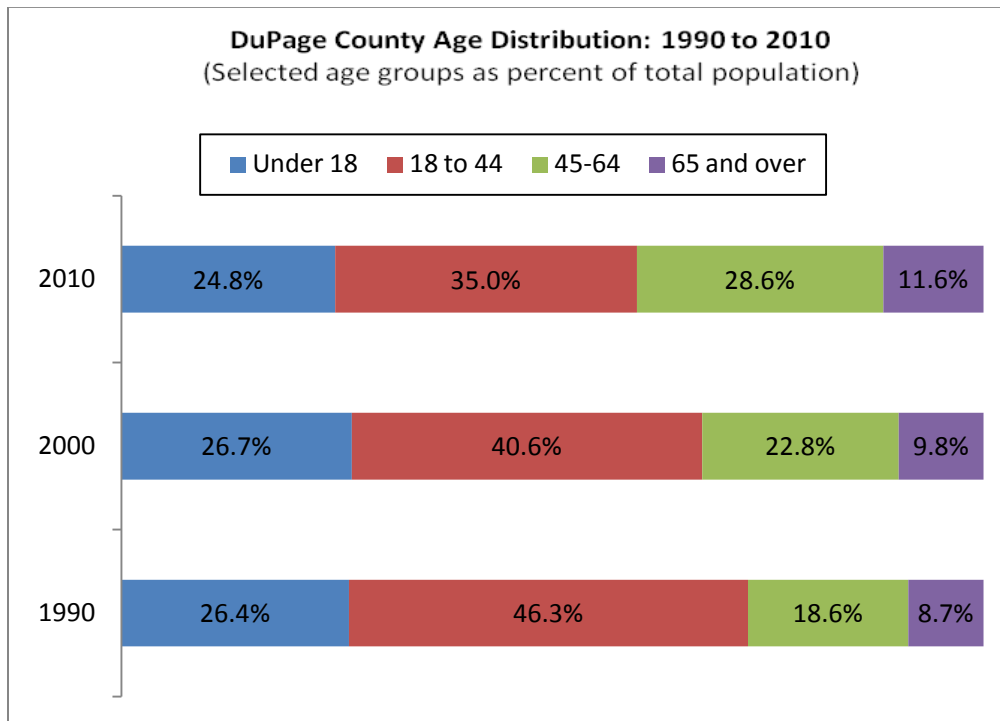


Table 2.2: 2010 Population 65 Years and Over and Median Age by Township

	Total Population	Pop. 65 Yrs and Over	Percent 65 Yrs and Over	Median age
Addison	88,612	11,383	12.8%	37.2
Bloomingtondale	111,899	11,651	10.4%	36.7
Downers Grove	146,795	21,036	14.3%	42
Lisle	116,268	12,101	10.4%	38.9
Milton	117,067	14,043	12.0%	38.6
Naperville	100,019	7,829	7.8%	34
Wayne	66,582	4,854	7.3%	37.5
Winfield	46,233	4,062	8.8%	34.6
York	123,449	19,439	15.7%	40.5
DuPage County	916,924	106,398	11.6%	38.2

Chart 2.2: 2010 Percent Population 65 Years and Over by DuPage Townships

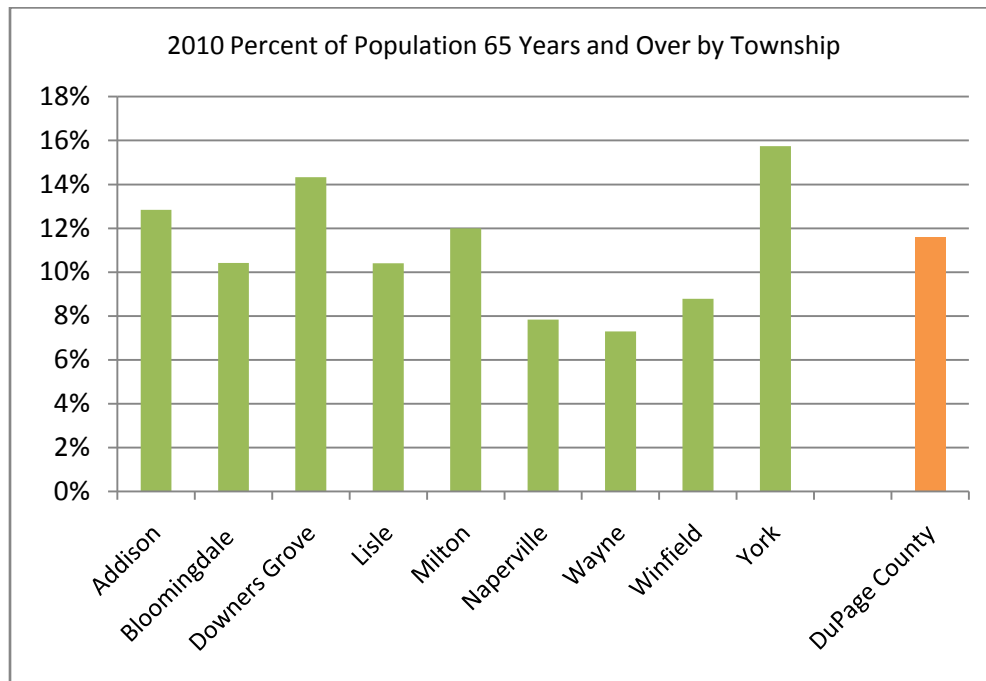


Table 2.3: Selected Demographic Characteristics for DuPage Municipalities
(Total municipal population, including the parts that might be outside DuPage County)

	Total population	Age		Hispanics	Households		Housing Units		
		Median age	% 65 years and over	% Hispanic or Latino	% Non Family HHs	Average HH size	% Vacant	% Owner-occupied	% Renter-occupied
Addison	36,942	33.7	10.5	40.1	22.5	3.08	5.1	68.4	31.6
Aurora	197,899	30.7	6.5	41.3	25.8	3.12	7	69.6	30.4
Bartlett	41,208	38	8.4	8.6	21	2.92	3	90.1	9.9
Bensenville	18,352	34.4	10.9	47.8	33	2.89	6.4	53.6	46.4
Bloomington	22,018	42.5	16.3	8.7	33.3	2.45	5.2	74	26
Bolingbrook	73,366	33.1	6.3	24.5	18.2	3.29	4	83.1	16.9
Burr Ridge	10,559	50	20	4.1	21.2	2.67	8.1	92.1	7.9
Carol Stream	39,711	35.5	8.6	14.2	28.2	2.78	5.2	69	31
Clarendon Hills	8,427	39.6	11.5	5.1	30.7	2.69	6.2	77.7	22.3
Darien	22,086	46	17.6	6.3	29.2	2.47	3.8	83.9	16.1
Downers Grove	47,833	42.6	15.3	5.2	33.5	2.46	6.3	77.2	22.8
Elmhurst	44,121	40.1	14.4	6.6	28.1	2.72	5	80.7	19.3
Glendale Heights	34,208	32	7.2	30.7	27.8	3.04	5.1	67.6	32.4
Glen Ellyn	27,450	40.3	13.1	6.6	29.9	2.63	5.7	75.5	24.5
Hanover Park	37,973	31.5	6.1	38.3	17.6	3.48	4.9	79.1	20.9
Hinsdale	16,816	41.4	11.5	3.5	18	3.03	8	86.5	13.5
Itasca	8,649	40.3	13.7	10.6	30	2.57	6.9	72.3	27.7
Lisle	22,390	37.2	10.9	7.5	41.5	2.32	6.2	59.2	40.8
Lombard	43,165	39.1	14.2	8.1	37	2.45	5.7	72.5	27.5
Naperville	141,853	37.9	8.7	5.3	24.9	2.79	4.3	75.9	24.1
Oak Brook	7,883	54.5	29.3	4.3	19.6	2.63	7.8	95.6	4.4
Oakbrook Terrace	2,134	41.2	19.1	10.5	53.3	1.95	12.7	45.3	54.7
Roselle	22,763	39.3	10.2	8.2	28.2	2.63	4.5	80.1	19.9
Villa Park	21,904	37.1	11.1	17.8	29.9	2.73	5.8	72.2	27.8
Warrenville	13,140	36.6	8.5	20.9	30	2.68	4.6	80.4	19.6
Wayne	2,431	46.5	12.8	3.7	17	2.88	4.9	94.9	5.1
West Chicago	27,086	30.1	6.2	51.1	17	3.65	5.6	69.1	30.9
Westmont	24,685	39	15.4	11.2	40.9	2.34	7.7	53.5	46.5
Wheaton	52,894	38.4	12.3	4.9	30.7	2.58	4.6	73.5	26.5
Willowbrook	8,540	46.3	21.4	5.7	46.9	2.08	7.8	73	27
Winfield	9,080	44.1	13.1	5.4	25.2	2.66	3.7	93.8	6.2
Wood Dale	13,770	41.7	16.6	20.3	29.3	2.66	6.5	82.6	17.4
Woodridge	32,971	36.1	8.3	13.4	31.5	2.6	5.6	67.1	32.9

**Table 2.4: Population 65 Years and Over and Median Age:
Seven-County region, Illinois, and U.S.**

	Percent 65 and over	Median age
DuPage	11.6%	38.2
Cook	11.9%	35.3
Kane	9.6%	34.5
Kendall	7.3%	32.9
Lake	10.4%	36.7
McHenry	10.1%	38
Will	9.3%	35.4
Illinois	13.0%	37.2
U.S.	12.5%	36.6

Chart 2.3: Percent of Population 65 and Over: Seven-County Region, Illinois, and U.S.

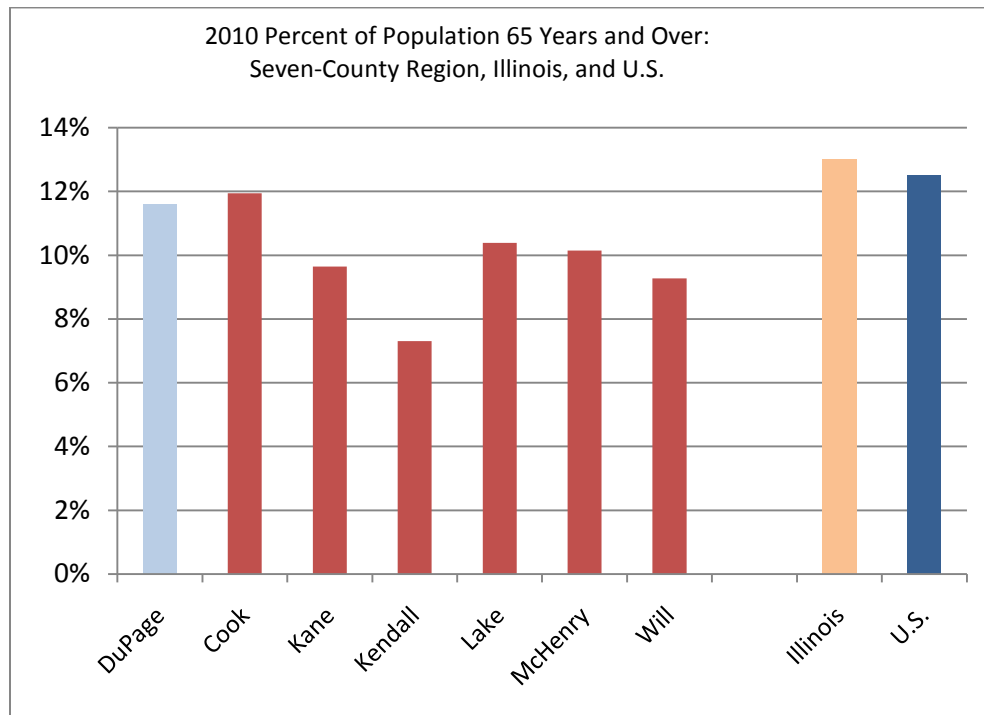
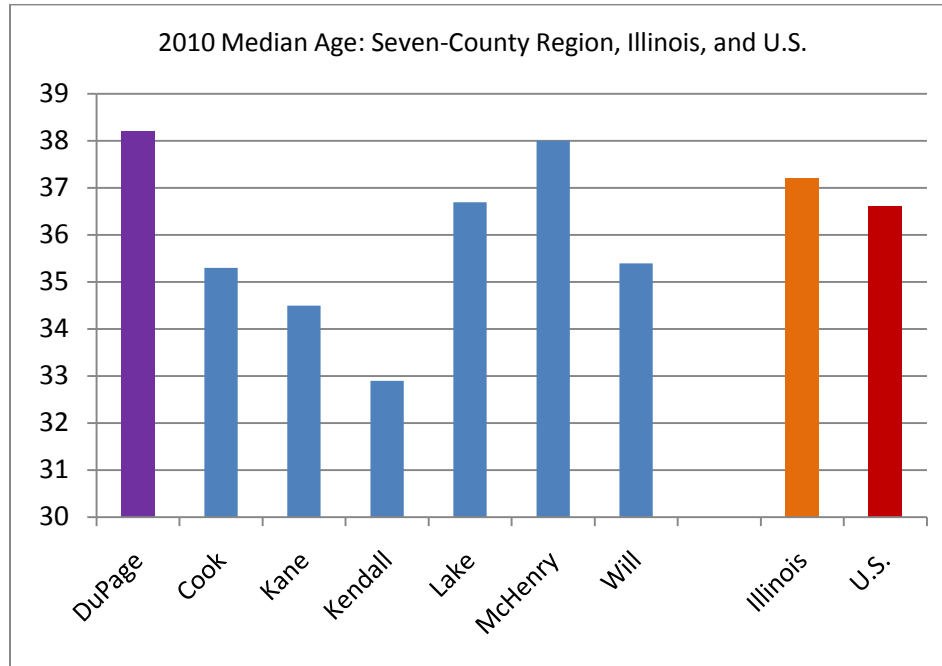


Chart 2.4: 2010 Median Age: Seven-County Region, Illinois, and U.S.



2011 DuPage County Statistical Profile

3. Household Characteristics

DuPage County

In 2010, DuPage County had a total of 337,132 households, of which 70.6% were families and 29.4% non-family households ([Table 3.1](#)). The average household size was 2.68, somewhat lower than the 2000 average, which was 2.73. There were 21,811 single parent families with children under the age of 18, and 16,505 of those had a female householder. 28,034 households consisted of persons 65 years or older living alone.

DuPage Townships

The townships with the highest average household size were Wayne (3.14) and Winfield (3.03). Conversely, York (2.52), Lisle (2.55), and Downers Grove (2.56) had the lowest average household size ([Chart 3.1](#)). Relatively lower average household size numbers are an indication of a significant number of empty nesters and/or non-family households (in most cases young adults).

DuPage Municipalities

The communities with the highest average household size in 2010 were West Chicago (3.65) and Hanover Park (3.48). Oakbrook Terrace (1.95) and Willowbrook (2.08) had the smallest average household size and the highest percentages of nonfamily households ([Table 3.2](#)).

Region

DuPage County's average household size (2.68) was the second lowest - next to Cook County's (2.60)- in the seven-county region. Kendall (3.01), Kane (2.98), and Will (2.97) Counties had the highest average household size values ([Chart 3.2](#)). One explanation for the higher values of those three counties is the fact that over the last decade, the large number of new homes that were built there attracted many families with children, thus contributing to a higher average household size. During the 2000-2010 period, Will, Kendall and Kane Counties experienced some of the highest rates of population growth among all counties in the nation. The average household size for the State of Illinois was 2.59, and for the nation 2.58.

Appendix 3 – Household Characteristics Tables and Charts

Table 3.1: 2010 Selected DuPage County Household Characteristics

Households by Type	Number	Percent
Total households	337,132	100
Family households (families)	238,014	70.6
With own children under 18 years	112,483	33.4
Husband-wife family	193,232	57.3
With own children under 18 years	90,672	26.9
Male householder, no wife present	12,847	3.8
With own children under 18 years	5,306	1.6
Female householder, no husband present	31,935	9.5
With own children under 18 years	16,505	4.9
Nonfamily households	99,118	29.4
Householder living alone	81,763	24.3
Male	34,246	10.2
65 years and over	6,818	2
Female	47,517	14.1
65 years and over	21,216	6.3
Average household size	2.68	
Average family size	3.24	

Chart 3.1: 2010 Average Household Size by Township

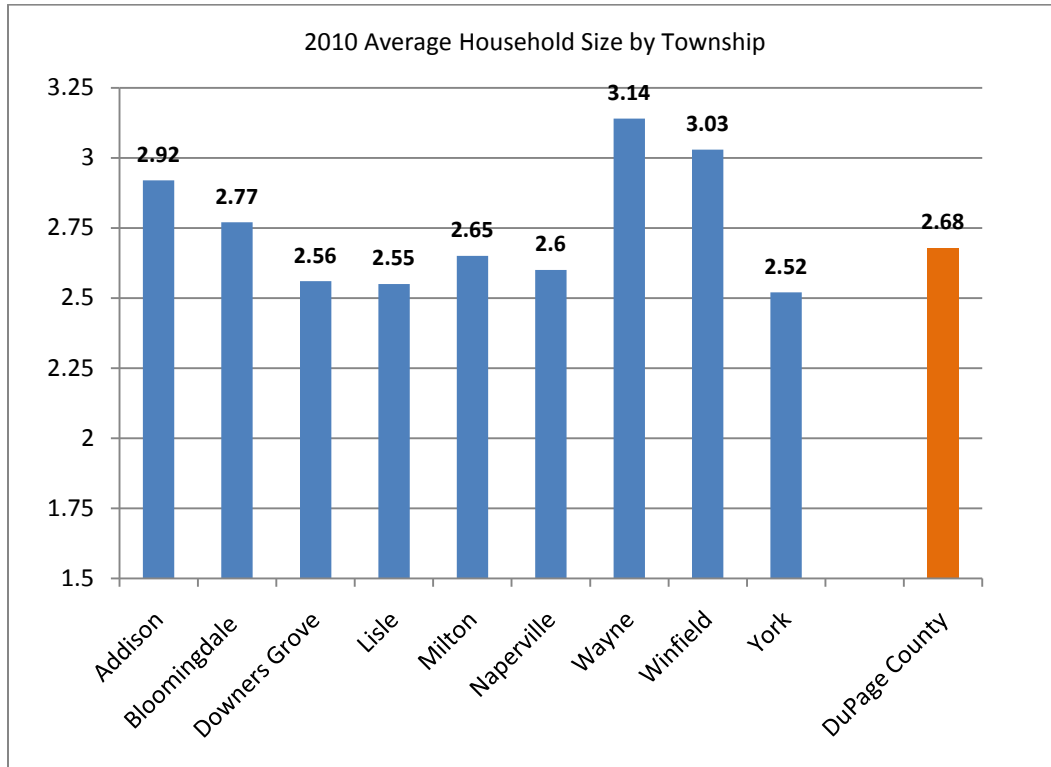
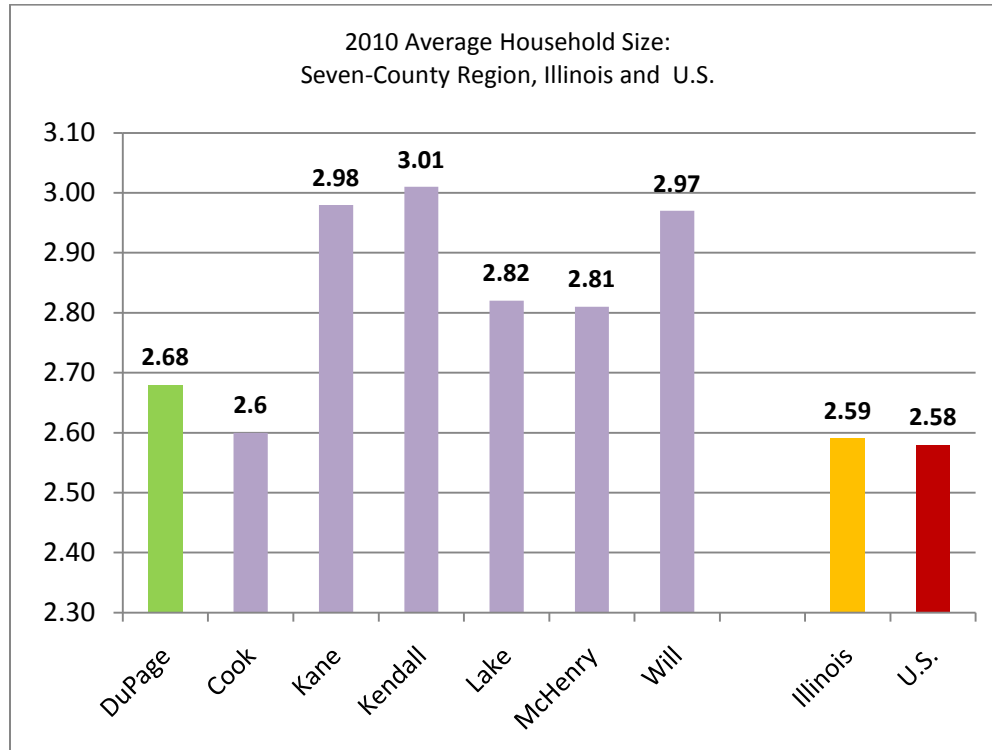


Table 3.2: Selected Demographic Characteristics for DuPage Municipalities
(Total municipal population, including the parts that might be outside DuPage County)

	Total population	Age		Hispanics	Households		Housing Units		
		Median age	% 65 years and over	% Hispanic or Latino	% Non Family HHs	Average HH size	% Vacant	% Owner-occupied	% Renter-occupied
Addison	36,942	33.7	10.5	40.1	22.5	3.08	5.1	68.4	31.6
Aurora	197,899	30.7	6.5	41.3	25.8	3.12	7	69.6	30.4
Bartlett	41,208	38	8.4	8.6	21	2.92	3	90.1	9.9
Bensenville	18,352	34.4	10.9	47.8	33	2.89	6.4	53.6	46.4
Bloomington	22,018	42.5	16.3	8.7	33.3	2.45	5.2	74	26
Bolingbrook	73,366	33.1	6.3	24.5	18.2	3.29	4	83.1	16.9
Burr Ridge	10,559	50	20	4.1	21.2	2.67	8.1	92.1	7.9
Carol Stream	39,711	35.5	8.6	14.2	28.2	2.78	5.2	69	31
Clarendon Hills	8,427	39.6	11.5	5.1	30.7	2.69	6.2	77.7	22.3
Darien	22,086	46	17.6	6.3	29.2	2.47	3.8	83.9	16.1
Downers Grove	47,833	42.6	15.3	5.2	33.5	2.46	6.3	77.2	22.8
Elmhurst	44,121	40.1	14.4	6.6	28.1	2.72	5	80.7	19.3
Glendale Heights	34,208	32	7.2	30.7	27.8	3.04	5.1	67.6	32.4
Glen Ellyn	27,450	40.3	13.1	6.6	29.9	2.63	5.7	75.5	24.5
Hanover Park	37,973	31.5	6.1	38.3	17.6	3.48	4.9	79.1	20.9
Hinsdale	16,816	41.4	11.5	3.5	18	3.03	8	86.5	13.5
Itasca	8,649	40.3	13.7	10.6	30	2.57	6.9	72.3	27.7
Lisle	22,390	37.2	10.9	7.5	41.5	2.32	6.2	59.2	40.8
Lombard	43,165	39.1	14.2	8.1	37	2.45	5.7	72.5	27.5
Naperville	141,853	37.9	8.7	5.3	24.9	2.79	4.3	75.9	24.1
Oak Brook	7,883	54.5	29.3	4.3	19.6	2.63	7.8	95.6	4.4
Oakbrook Terrace	2,134	41.2	19.1	10.5	53.3	1.95	12.7	45.3	54.7
Roselle	22,763	39.3	10.2	8.2	28.2	2.63	4.5	80.1	19.9
Villa Park	21,904	37.1	11.1	17.8	29.9	2.73	5.8	72.2	27.8
Warrenville	13,140	36.6	8.5	20.9	30	2.68	4.6	80.4	19.6
Wayne	2,431	46.5	12.8	3.7	17	2.88	4.9	94.9	5.1
West Chicago	27,086	30.1	6.2	51.1	17	3.65	5.6	69.1	30.9
Westmont	24,685	39	15.4	11.2	40.9	2.34	7.7	53.5	46.5
Wheaton	52,894	38.4	12.3	4.9	30.7	2.58	4.6	73.5	26.5
Willowbrook	8,540	46.3	21.4	5.7	46.9	2.08	7.8	73	27
Winfield	9,080	44.1	13.1	5.4	25.2	2.66	3.7	93.8	6.2
Wood Dale	13,770	41.7	16.6	20.3	29.3	2.66	6.5	82.6	17.4
Woodridge	32,971	36.1	8.3	13.4	31.5	2.6	5.6	67.1	32.9

Chart 3.2: 2010 Average Household Size: Seven-County Region, Illinois, and U.S.



2011 DuPage County Statistical Profile

4. Housing Occupancy and Tenure

DuPage County

[Table 4.1](#) shows 2000-2010 changes in selected DuPage County housing characteristics. During that period, a total of 20,558 units were added to the DuPage County housing stock (an increase of 6.1%). In the same period, the number of vacant housing units increased by 90%, from 10,020 in 2000 to 19,047, and the 2010 residential vacancy rate was 5.3% while the 2000 rate was only 3%. Most of the newly added housing units were rentals: From 2000 to 2010 the number of renter-occupied units increased by 8,458 (11%), while the number of owner-occupied housing units increased by only 3,073 or 1.2%. In 2010, DuPage County had a total of 356,179 housing units, of which 337,132 were occupied. 74.7% of the occupied units were owner-occupied and 25.3% were renter-occupied ([Table 4.2](#)).

DuPage Townships

[Table 4.3](#) and [Chart 4.1](#) and [Chart 4.2](#) show the 2010 total number of housing units and housing occupancy for the nine DuPage County townships. Downers Grove Township had the most housing units (60,438), and Winfield Township had the least (15,856). York had the highest vacancy rate (6.4%) while Wayne Township had the lowest (2.9%). Wayne also had the lowest percentage of renter-occupied housing units (9.4%), while Naperville Township had the highest (32.7% of that township's occupied housing units were rentals).

Naperville Township experienced the largest increase in housing units among all Townships during the 2000-2010 period, both in number (5,767) and in percentage (16.8%) ([Table 4.4](#)). The number of housing units gained by Naperville Township represents 28% of all new housing units created in DuPage County during this period.

[Table 4.5](#) includes the 2000-2010 changes in the number of housing units in the unincorporated parts of DuPage County townships. In 2010, 37,939 housing units (11.3% of all housing units in DuPage County) were located in unincorporated areas (down by 1.7% from the year 2000 number). Unincorporated Downers Grove and Milton Townships had the largest number of housing units (8,010 and 7,998 respectively).

DuPage Municipalities

During the 2000-2010 period, the City of Aurora (DuPage County part only) added the largest number of housing units (3,810) than any other DuPage municipality ([Table 4.6](#)). Next was Naperville with 2,964 new housing units and Woodridge with 1,674.

In 2010, the communities with the lowest residential vacancy rates were Bartlett (3.0), Winfield (3.7) and Darien (3.8). Oakbrook Terrace (12.7), Burr Ridge (8.1) and Hinsdale (8.0) had the highest vacancy

rates ([Table 4.7](#)). Oakbrook Terrace (54.7%), Westmont (46.5%) and Bensenville (46.4%) had the largest percentages of renter occupied housing units, while Oak Brook, Wayne and Winfield had the smallest percentages.

Region

Among the seven counties in the northeastern Illinois region in 2010, Will and DuPage Counties had the lowest residential vacancy rates with 5.2 and 5.3 respectively ([Chart 4.3](#)). Cook County's residential vacancy rate of 9.8 was by far the highest in the region, but it was still lower than the U.S. rate of 11.4. 41.8% of Cook County's occupied housing units were renter-occupied, the highest percentage in the seven-county region ([Chart 4.4](#)), with DuPage County having the second highest percentage with 25.3%. The percentage of renter-occupied housing units was 32.5% for Illinois and 34.9% for the nation.

Appendix 4 – Housing Tables and Charts

Table 4.1: 2000-2010 Changes in DuPage County Housing Occupancy and Tenure

	2000	2010	2000- 2010 Change	2000- 2010 %Change
Total housing units	335,621	356,179	20,558	6.1%
Occupied housing units	325,601	337,132	11,531	3.5%
Vacant housing units	10,020	19,047	9,027	90.1%
Vacancy rate	3.0	5.3		
Owner-occupied housing units	248,762	251,835	3,073	1.2%
Renter-occupied housing units	76,839	85,297	8,458	11.0%

Table 4.2: 2010 DuPage County Housing Occupancy and Tenure

	Number	Percent
Total housing units	356,179	100.0
Vacant housing units	19,047	5.3
Homeowner vacancy rate (percent)		2.0
Rental vacancy rate (percent)		7.9
Occupied housing units	337,132	100.0
Owner-occupied housing units	251,835	74.7
Population in owner-occupied housing units	703,144	
Average household size of owner-occupied units	2.79	
Renter-occupied housing units	85,297	25.3
Population in renter-occupied housing units	201,640	
Average household size of renter-occupied units	2.36	

Table 4.3: 2010 Housing Occupancy and Tenure by Township

	2010 Total Housing Units	Occupied Housing Units	Vacancy Rates	Percent Owner Occupied	Percent Renter Occupied
Addison	31,820	30,153	5.2%	73.5	26.5%
Bloomingtondale	42,395	40,068	5.5%	73.8	26.2%
Downers Grove	60,438	56,866	5.9%	77.4	22.6%
Lisle	47,174	44,703	5.2%	72.6	27.4%
Milton	45,153	42,895	5.0%	72.7	27.3%
Naperville	39,999	37,952	5.1%	67.3	32.7%
Wayne	21,787	21,150	2.9%	90.6	9.4%
Winfield	15,856	15,104	4.7%	78.6	21.4%
York	51,557	48,241	6.4%	74.4	25.6%
DuPage County	356,179	337,132	5.3%	74.7	25.3%

Chart 4.1: 2010 Residential Vacancy Rates by Township

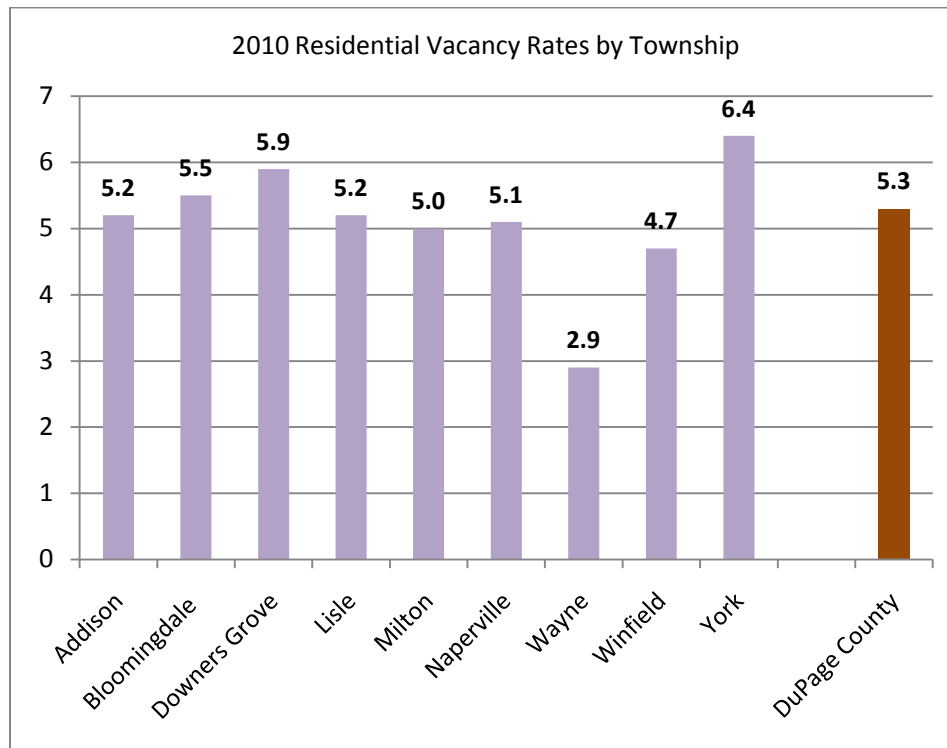


Chart 4.2: 2010 Percent Renter Occupied Housing Units by Township

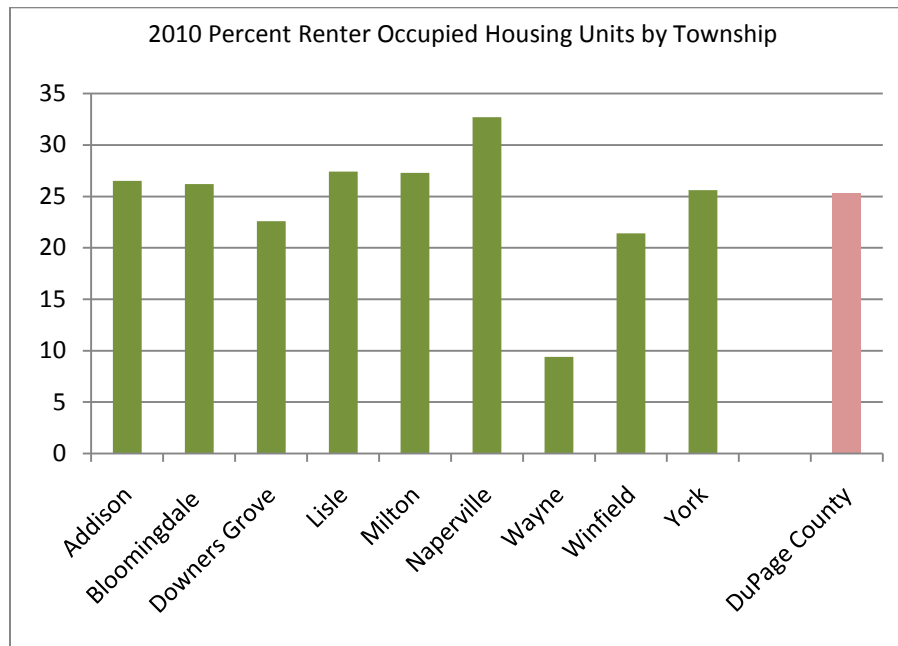


Table 4.4: 2000-2010 Changes in the Number of Housing Units by Township

	2000 Total Housing Units	2010 Total Housing Units	2000- 2010 Change	2000- 2010 %Change
Addison	30,968	31,820	852	2.8%
Bloomingdale	39,872	42,395	2,523	6.3%
Downers Grove	58,515	60,438	1,923	3.3%
Lisle	44,899	47,174	2,275	5.1%
Milton	43,668	45,153	1,485	3.4%
Naperville	34,232	39,999	5,767	16.8%
Wayne	19,986	21,787	1,801	9.0%
Winfield	14,865	15,856	991	6.7%
York	48,615	51,557	2,942	6.1%
DuPage Totals	335,620	356,179	20,559	6.1%

Table 4.5: 2000-2010 Unincorporated Township Changes in the Number of Housing Units

	2000 Number of Housing Units	2010 Number of Housing Units	2000- 2010 Change	2000- 2010 %Change
Addison	1,965	2,054	89	4.5%
Bloomingtondale	3,512	3,533	21	0.6%
Downers Grove	8,521	8,010	-511	-6.0%
Lisle	6,427	5,985	-442	-6.9%
Milton	7,757	7,998	241	3.1%
Naperville	1,547	1,728	181	11.7%
Wayne	1,600	1,667	67	4.2%
Winfield	2,538	2,375	-163	-6.4%
York	4,737	4,589	-148	-3.1%
Unincorporated Totals	38,604	37,939	-665	-1.7%

**Table 4.6: 2000-2010 Changes in Total Number of Housing Units:
DuPage Municipalities (DuPage County Parts only)**

	2000 Total Housing Units	2010 Total Housing Units	Change 2000- 2010	% Change 2000- 2010
Addison	11,805	12,581	776	6.6%
Aurora	14,479	18,289	3,810	26.3%
Bartlett	7,665	8,055	390	5.1%
Bensenville	7,120	6,743	-377	-5.3%
Bloomington	8,399	9,156	757	9.0%
Bolingbrook	503	505	2	0.4%
Burr Ridge	2,320	2,589	269	11.6%
Carol Stream	14,200	15,050	850	6.0%
Clarendon Hills	2,939	3,338	399	13.6%
Darien	8,929	9,275	346	3.9%
Downers Grove	19,477	20,478	1,001	5.1%
Elmhurst	16,147	16,590	443	2.7%
Glendale Heights	11,105	11,864	759	6.8%
Glen Ellyn	10,515	11,051	536	5.1%
Hanover Park	5,495	5,641	146	2.7%
Hinsdale	5,551	5,231	-320	-5.8%
Itasca	3,258	3,573	315	9.7%
Lisle	8,997	9,915	918	10.2%
Lombard	17,019	18,454	1,435	8.4%
Naperville	34,548	37,512	2,964	8.6%
Oak Brook	3,258	3,185	-73	-2.2%
Oakbrook Terrace	1,327	1,256	-71	-5.4%
Roselle	7,122	7,534	412	5.8%
Villa Park	7,987	8,521	534	6.7%
Warrenville	5,067	5,125	58	1.1%
Wayne	445	540	95	21.3%
West Chicago	6,567	7,763	1,196	18.2%
Westmont	10,269	11,225	956	9.3%
Wheaton	19,881	20,112	231	1.2%
Willowbrook	4,504	4,375	-129	-2.9%
Winfield	3,024	3,544	520	17.2%
Wood Dale	5,220	5,529	309	5.9%
Woodridge	11,708	13,382	1,674	14.3%

Table 4.7: Selected Demographic Characteristics for DuPage Municipalities
(Total municipal population, including the parts that might be outside DuPage County)

	Total population	Age		Hispanics	Households		Housing Units		
		Median age	% 65 years and over	% Hispanic or Latino	% Non Family HHs	Average HH size	% Vacant	% Owner-occupied	% Renter-occupied
Addison	36,942	33.7	10.5	40.1	22.5	3.08	5.1	68.4	31.6
Aurora	197,899	30.7	6.5	41.3	25.8	3.12	7	69.6	30.4
Bartlett	41,208	38	8.4	8.6	21	2.92	3	90.1	9.9
Bensenville	18,352	34.4	10.9	47.8	33	2.89	6.4	53.6	46.4
Bloomington	22,018	42.5	16.3	8.7	33.3	2.45	5.2	74	26
Bolingbrook	73,366	33.1	6.3	24.5	18.2	3.29	4	83.1	16.9
Burr Ridge	10,559	50	20	4.1	21.2	2.67	8.1	92.1	7.9
Carol Stream	39,711	35.5	8.6	14.2	28.2	2.78	5.2	69	31
Clarendon Hills	8,427	39.6	11.5	5.1	30.7	2.69	6.2	77.7	22.3
Darien	22,086	46	17.6	6.3	29.2	2.47	3.8	83.9	16.1
Downers Grove	47,833	42.6	15.3	5.2	33.5	2.46	6.3	77.2	22.8
Elmhurst	44,121	40.1	14.4	6.6	28.1	2.72	5	80.7	19.3
Glendale Heights	34,208	32	7.2	30.7	27.8	3.04	5.1	67.6	32.4
Glen Ellyn	27,450	40.3	13.1	6.6	29.9	2.63	5.7	75.5	24.5
Hanover Park	37,973	31.5	6.1	38.3	17.6	3.48	4.9	79.1	20.9
Hinsdale	16,816	41.4	11.5	3.5	18	3.03	8	86.5	13.5
Itasca	8,649	40.3	13.7	10.6	30	2.57	6.9	72.3	27.7
Lisle	22,390	37.2	10.9	7.5	41.5	2.32	6.2	59.2	40.8
Lombard	43,165	39.1	14.2	8.1	37	2.45	5.7	72.5	27.5
Naperville	141,853	37.9	8.7	5.3	24.9	2.79	4.3	75.9	24.1
Oak Brook	7,883	54.5	29.3	4.3	19.6	2.63	7.8	95.6	4.4
Oakbrook Terrace	2,134	41.2	19.1	10.5	53.3	1.95	12.7	45.3	54.7
Roselle	22,763	39.3	10.2	8.2	28.2	2.63	4.5	80.1	19.9
Villa Park	21,904	37.1	11.1	17.8	29.9	2.73	5.8	72.2	27.8
Warrenville	13,140	36.6	8.5	20.9	30	2.68	4.6	80.4	19.6
Wayne	2,431	46.5	12.8	3.7	17	2.88	4.9	94.9	5.1
West Chicago	27,086	30.1	6.2	51.1	17	3.65	5.6	69.1	30.9
Westmont	24,685	39	15.4	11.2	40.9	2.34	7.7	53.5	46.5
Wheaton	52,894	38.4	12.3	4.9	30.7	2.58	4.6	73.5	26.5
Willowbrook	8,540	46.3	21.4	5.7	46.9	2.08	7.8	73	27
Winfield	9,080	44.1	13.1	5.4	25.2	2.66	3.7	93.8	6.2
Wood Dale	13,770	41.7	16.6	20.3	29.3	2.66	6.5	82.6	17.4
Woodridge	32,971	36.1	8.3	13.4	31.5	2.6	5.6	67.1	32.9

Chart 4.3: 2010 Residential Vacancy Rates: Seven-County Region, Illinois, and U.S.

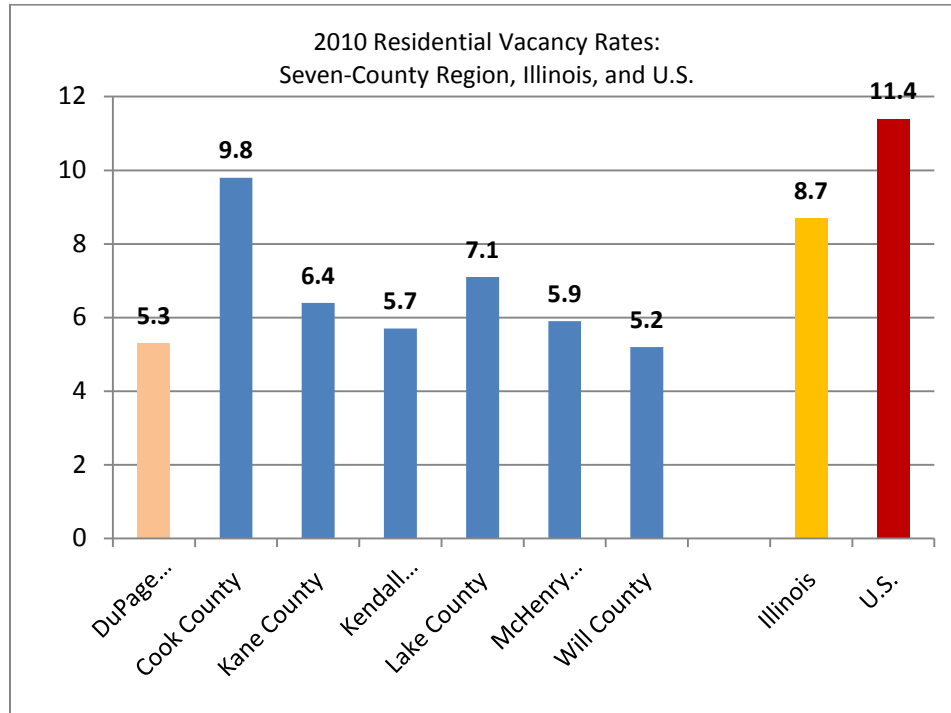
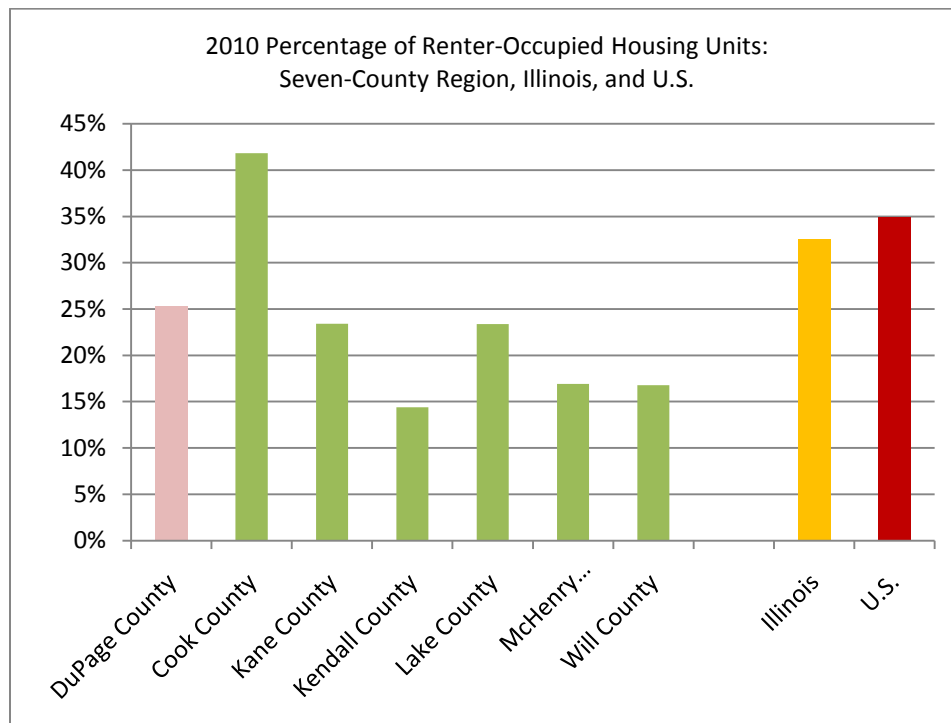


Chart 4.4: 2010 Percentage of Renter Occupied Housing Units: Seven-County Region, Illinois, and U.S.



2011 DuPage County Statistical Profile

5. Economic Activities

DuPage County is a major economic engine for the northeastern Illinois region, and hundreds of thousands of residents of other counties commute to their jobs in DuPage every day. In 2000, based on Census Transportation Planning Package (CTPP) data, 48% of all work trips in DuPage originated in other counties (no CTPP data for 2010 is available at this time). According to the Bureau of Economic Analysis (BEA), in 2009, there were a total of 695,603 jobs in DuPage County. [Table 5.1](#) shows that the DuPage economy is well diversified and that it offers a wide range of job opportunities. The *retail trade* sector had the largest number of jobs among all industries, with 71,124 jobs or 10.2% of the County's total. Other sectors with high employment numbers included *professional, scientific, and technical services*, *health care and social assistance*, and *administrative and waste services*.

[Table 5.2](#) depicts the 2009 major occupation groups for DuPage County residents. The largest occupation group by far was *management, professional and related occupations*, with 208,000 people or 44% of the County's work force. This is a reflection of the high educational attainment that characterizes the County's residents. 45% of all DuPage County residents 25 years old and over had a bachelor's degree or higher - the highest educational attainment among all counties in Illinois ([Table 5.3](#)).

A strong and diversified economy together with a highly educated work force contribute to the fact that DuPage County has had consistently the lowest unemployment rates over the last ten years among all other counties in the Chicago region, as well as when compared to the State of Illinois and the U.S. as a whole (see [Chart 5.1](#) and [Chart 5.2](#)). In 2009, based on the Bureau of Economic Analysis, DuPage County had the highest per capita personal income (PCPI) of \$52,449 among all counties in Illinois (see [Chart 5.3](#)). The DuPage per capita personal income was 125 percent of the Illinois average, and 132 percent of the national average. The County's 2009 median household income was \$73,520.

Appendix 5 – Economic Activity Tables and Charts

Table 5.1: 2009 DuPage County Number of Jobs by Industry

Source: Bureau of Economic Analysis

	Number of jobs	Percent of total
Total employment	695,603	100.0%
Wage and salary employment	589,187	84.7%
Proprietors employment	106,416	15.3%
Farm proprietors employment	38	0.0%
Nonfarm proprietors employment	106,378	15.3%
Farm employment	238	0.0%
Nonfarm employment	695,365	100.0%
Private employment	642,353	92.3%
Forestry, fishing, and related activities	256	0.0%
Mining	1,052	0.2%
Utilities	3,166	0.5%
Construction	32,937	4.7%
Manufacturing	52,312	7.5%
Wholesale trade	54,279	7.8%
Retail trade	71,124	10.2%
Transportation and warehousing	27,158	3.9%
Information	14,691	2.1%
Finance and insurance	48,761	7.0%
Real estate and rental and leasing	28,421	4.1%
Professional, scientific, and technical services	66,571	9.6%
Management of companies and enterprises	18,863	2.7%
Administrative and waste services	57,401	8.3%
Educational services	19,180	2.8%
Health care and social assistance	60,222	8.7%
Arts, entertainment, and recreation	11,117	1.6%
Accommodation and food services	41,653	6.0%
Other services, except public administration	33,189	4.8%
Government and government enterprises	53,012	7.6%
Federal, civilian	5,144	0.7%
Military	1,869	0.3%
State and local	45,999	6.6%
State government	(D)	
Local government	(D)	

(D) Not shown to avoid disclosure of confidential information

Table 5.2: 2009 Occupation Groups for DuPage County Residents

Source: American Community Survey

Civilian employed population 16 years and over	471,492	100.0%
Management, professional, and related occupations	208,139	44.10%
Service occupations	59,170	12.50%
Sales and office occupations	127,893	27.10%
Farming, fishing, and forestry occupations	256	0.10%
Construction, extraction, maintenance, and repair occupations	30,920	6.60%
Production, transportation, and material moving occupations	45,114	9.60%

Table 5.3: 2009 Educational Attainment of People 25 Years Old and Over: Seven-County NE Illinois Region

(Source: American Community Survey)

	DuPage	Cook	Kane	Kendall	Lake	McHenry	Will
Percent bachelor's degree or higher	45.1%	33.7%	31.8%	34.3%	40.5%	32.6%	30.3%
Bachelor's degree	27.7%	20.0%	21.7%	23.0%	24.3%	22.1%	19.6%
Graduate or professional degree	17.4%	13.7%	10.1%	11.3%	16.2%	10.5%	10.7%

Chart 5.1: 2010 Unemployment Rates: Seven-County Region, Illinois, and U.S.
(Illinois Department of Employment Security)

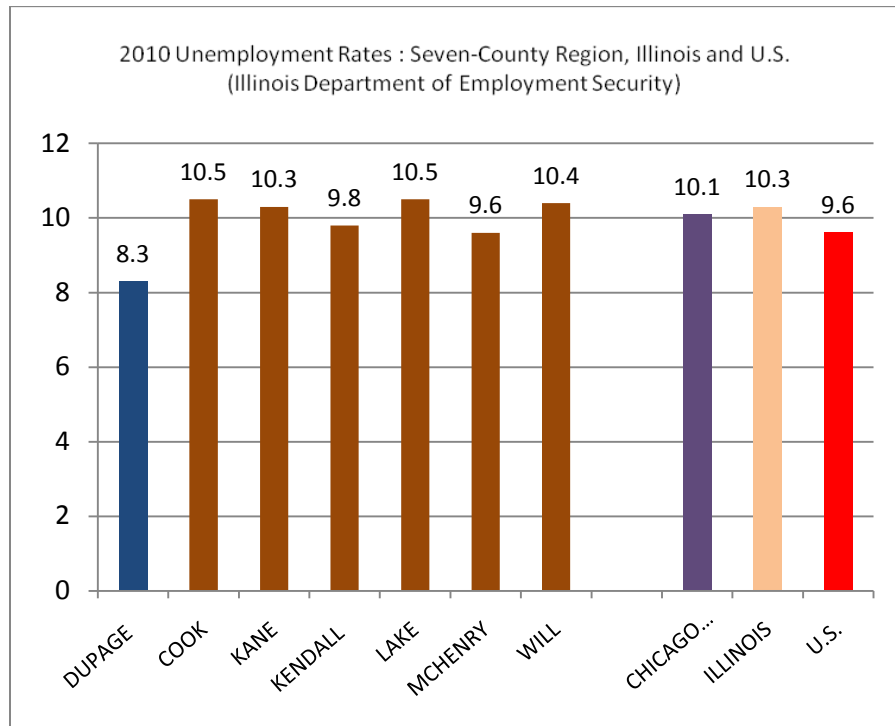


Chart 5.2: 2001 - 2010 Annual Unemployment Rates
(Illinois Department of Employment Security)

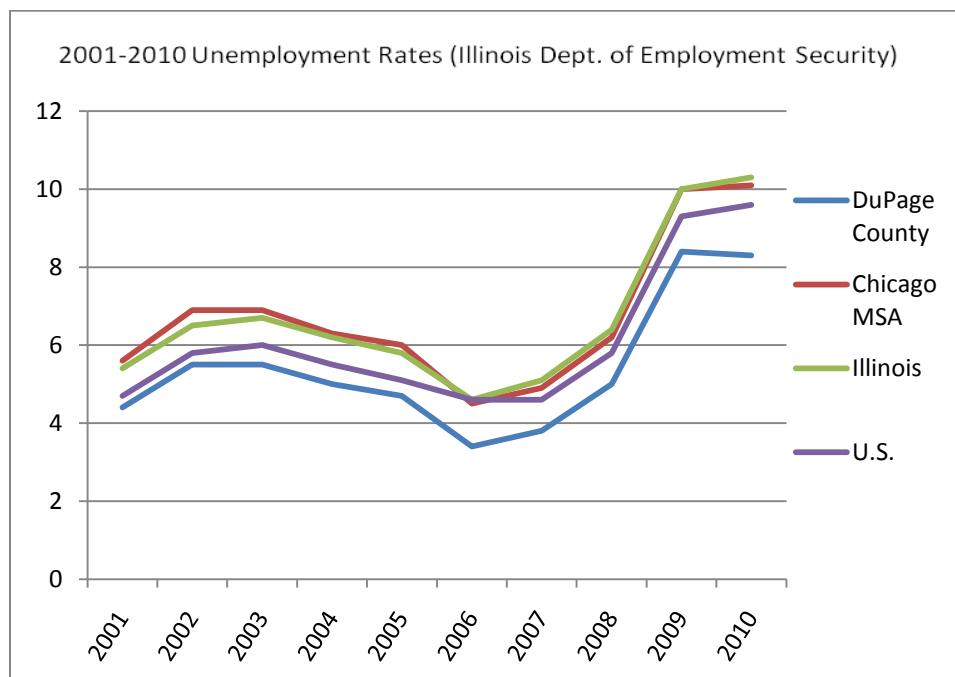
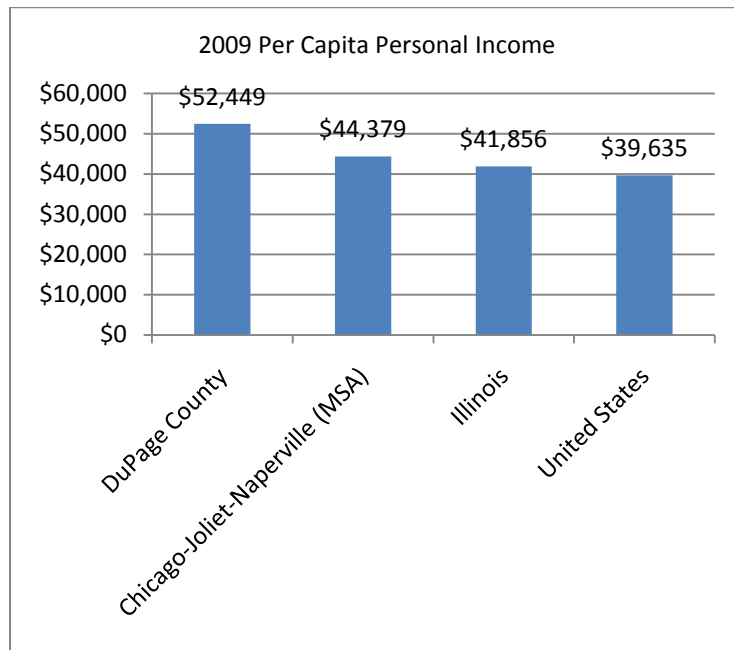


Chart 5.3: 2009 Per Capita Personal Income

(Source: Bureau of Economic Analysis)



2011 DuPage County Statistical Profile

6. Land Use

Based on the 2009 existing land use survey, there were 9,013 acres of undeveloped land in DuPage County, or approximately 4.2% of the total County area. Approximately 3,490 new acres had been consumed by new developments since the 2003 land use survey, when there were 12,500 undeveloped acres in the County ([Table 6.1](#)). Over the last two decades, DuPage County has been increasingly urbanized and it is now approaching maturity in terms of the existing land uses and the remaining undeveloped land. The high rates of growth and development that the County experienced in the 1990s and the early years of the 2000 decade, declined significantly in the 2003-2009 period. The main reason for the much slower development rates in the last few years is the fact that the amount of the remaining available developable land has been diminishing and is becoming more expensive. Another contributing factor is the overall downturn in the economy and the considerable slowdown of the real estate market and the construction industry particularly since 2007.

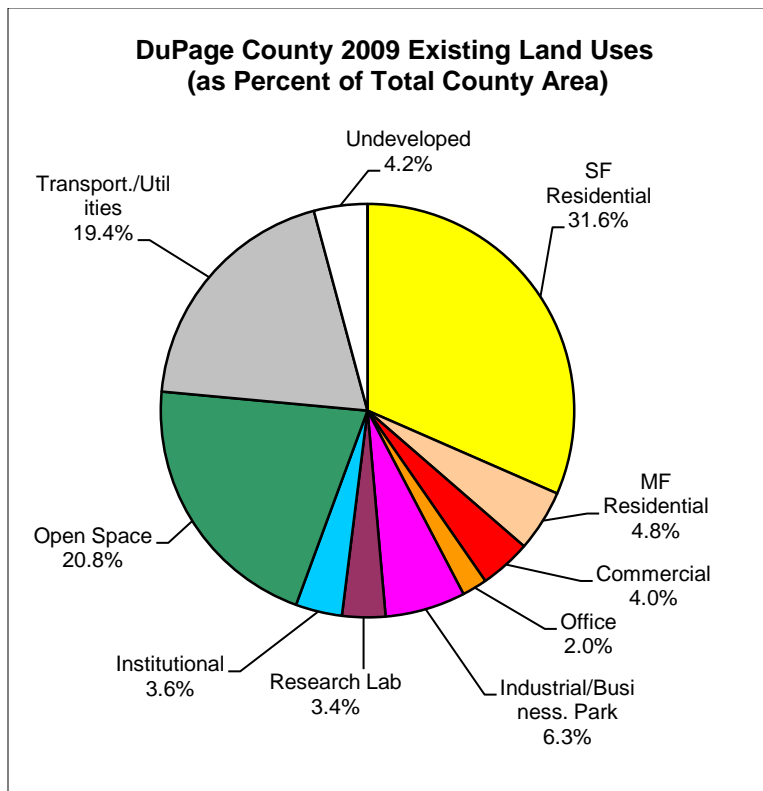
[Chart 6.1](#) shows the distribution of the 2009 major existing land use categories as percent of the total County area. The largest land use category was single family residential with 31.6% of all area, followed by open space with 20.8%, and transportation and utilities with 19.4%. For additional information regarding land use, please see the “*DuPage County 2009 Land Use Analysis and Trends*” report at the planning section of the County’s website: www.dupageco.org/planning

Appendix 6 – Land Use Tables and Charts

Table 6.1: DuPage County Undeveloped Land 1995 to 2009

	1995	2000	2003	2009
Remaining undeveloped land (in acres)	26,356	16,909	12,501	9,013
Undeveloped land as percent of total County area	12.2%	7.8%	5.8%	4.2%

Chart 6.1: 2009 DuPage County Existing Land Use Categories Distribution



2011 DuPage County Statistical Profile

7. Transportation

DuPage County residents and businesses have access to an extensive roadway, rail and air transportation network. O'Hare International Airport, the country's second busiest, is located in the County's northeast corner, and DuPage Airport, a general aviation facility is in western DuPage. An extensive and well-integrated highway system connects DuPage with the other parts of the northeastern Illinois region and beyond. The DuPage County Division of Transportation has jurisdiction over 220 miles of arterial highways and 92 miles of multi-use trails. For additional information on DuPage County roadways and highways or transportation in general, please visit the Division or Transportation's website at www.dupageco.org/DOT.

Public transportation in DuPage County is provided by Metra commuter rail, and Pace suburban bus service. Metra has three commuter rail lines in DuPage County: Burlington Northern and Santa Fe (BNSF), Union Pacific West (UP-W), and Milwaukee District West (MD-W). These lines run from west to east and have a terminus in downtown Chicago. In 2006, 27 Metra stations serving DuPage County communities averaged a total of 37,100 weekday boardings ([Table 7.1](#)).

Pace operates approximately 70 fixed bus routes in DuPage County. Many of these routes operate in the peak period providing access from residential areas or park-and-ride facilities to the Metra Stations. Approximately 2.6 million passengers use PACE service annually in DuPage County. For additional information on public transportation in DuPage County, please visit the transit section of the County's website at www.dupageco.org/transit.

Based on estimates by the Census Bureau's American Community Survey, only 6.2% of DuPage residents used public transportation to commute to work in 2009 ([Table 7.2](#)). Of the 28,837 commuters who used public transit, the overwhelming majority (25,677) were Metra rail users. The 2009 mean travel time to work for DuPage residents was 28.8 minutes, only slightly higher than the time for Kane County (28.5), which had the shortest travel time to work among all counties in the region ([Table 7.3](#)). Typically, relatively shorter travel times to work within a region are an indication of a balance between housing and jobs and a well-integrated transportation system.

Appendix 7 – Transportation Tables and Charts

Table 7.1: Metra Commuter Rail Stations serving DuPage Communities, and 2006 Average Number of Weekday Boardings

Burlington Northern Santa Fe Stations	Average Weekday Boardings (2006)
Route 59	5,793
Naperville	4,112
Lisle	2,472
Belmont Avenue	1,414
Main Street, Downers Grove	2,328
Fairview Avenue	403
Westmont	1,168
Clarendon Hills	799
West Hinsdale	323
Hinsdale	1,065
Highlands	176
Subtotal	20,053
Union Pacific West Line Stations	
West Chicago	588
Winfield	503
Wheaton	1,661
College Avenue	952
Glen Ellyn	1,537
Lombard	1,281
Villa Park	835
Elmhurst	1,833
Subtotal	9,190
Milwaukee District West Line Stations	
Bartlett	1,064
Hanover Park	1,482
Schaumburg	1,698
Roselle	1,500
Medinah	501
Itasca	546
Wood Dale	639
Bensenville	450
Subtotal	7,880
Total	37,123

Table 7.2: 2009 Means of Transportation to Work for DuPage County Residents
(Source: 2009 American Community Survey)

	Number	Percent
Total:	463,568	100.0%
Car, truck, or van:	399,413	86.2%
Drove alone	364,185	78.6%
Carpooled:	35,228	7.6%
Public transportation (excluding taxi):	28,837	6.2%
Bus or trolley bus	1,374	0.3%
Streetcar or trolley car	55	0.0%
Subway or elevated	1,687	0.4%
Railroad	25,677	5.5%
Ferryboat	44	0.0%
Taxicab	568	0.1%
Motorcycle	310	0.1%
Bicycle	1,849	0.4%
Walked	9,022	1.9%
Other means	2,296	0.5%
Worked at home	21,273	4.6%

**Table 7.3: 2009 Mean Travel Time to Work (Minutes):
Northeastern Illinois Region Counties***

	Minutes
DuPage	28.8
Cook	31.5
Kane	28.5
Lake	30.7
McHenry	34.1
Will	32.6

*Kendall County data not available because of small sample size

2011 DuPage County Statistical Profile

8. DuPage County Schools

The DuPage County public school system is made up of 29 elementary school districts, 7 high school districts, and 6 community unit districts. In the 2010-2011 school year, the system had a combined enrollment of 159,844 students, and 12,514 certified staff (**Table 8.1**). In addition to the public schools, there are a total of 49 parochial and private schools in DuPage. The County is also home to 11 colleges and universities. For more detailed information on schools, please visit the website of the DuPage County Regional Office of Education at: www.dupage.k12.il.us

Table 8.1 2010-2011 DuPage County Public School Summary

Source: DuPage County Regional Office of Education

	Certified Staff	Enrollment
Elementary Districts (29)	4,701	58,074
High School Districts (7)	2,222	29,393
Community Unit Districts (6)	5,591	72,377
Totals	12,514	159,844

2011 DuPage County Statistical Profile

9. Open Space/Recreation Facilities

The Forest Preserve District of DuPage County owns leases or manages more than 60 forest preserves totaling approximately 26,000 acres throughout the County for the purpose of preserving the natural environment and providing many recreational activities for the benefit of DuPage residents. For more information please visit the website of the Forest Preserve District of DuPage County at:

www.dupageforest.com

DuPage residents also enjoy recreational opportunities provided by 40 local government park districts. In addition, the DuPage County Division of Transportation manages a 92-mile network of trails for bicycle and pedestrian activities, including the Illinois Prairie Path and the Great Western Trail.

To view links to the websites of individual park districts and the DuPage County trail system, please go to the DuPage County website: www.dupageco.org