

ORDINANCE NO. 162

AN ORDINANCE OF THE CITY OF CROOKS, SOUTH DAKOTA, PROVIDING THAT CERTAIN REAL PROPERTY WITHIN THE CITY OF CROOKS, SOUTH DAKOTA, BE REZONED.

BE IT ORDAINED BY THE CITY COUNCIL OF THE CITY OF CROOKS, SOUTH DAKOTA:

Phase 1 of Pheasant Ridge Addition

That part of PART NW ¼ E OF RAILROAD (EXCEPT PART OF EAST 132 FT W 1420 FT N 108 FT AND EXCEPT N 183 FT E 100 FT AND EXCEPT THE S 66.72 FT N 250 FT AND E 9.71 FT AND EXCEPT GLOES 2ND AND GLOES 3RD) 11-102-50

CROOKS CITY UNPLATTED as indicated on Exhibit A.

Containing 15.24 acres, Range 50 West of the 5th P.M., Minnehaha County, South Dakota, from A-1 to R-1.

Adopted this 9 day of March 2009
First Reading: February 9, 2009
Second Reading: March 9, 2009
Passage & Adoption: March 9, 2009
Publication Date: March 18, 2009
Effective Date: April 7, 2009

Kelly G. Finke
Kelly G. Finke, Mayor

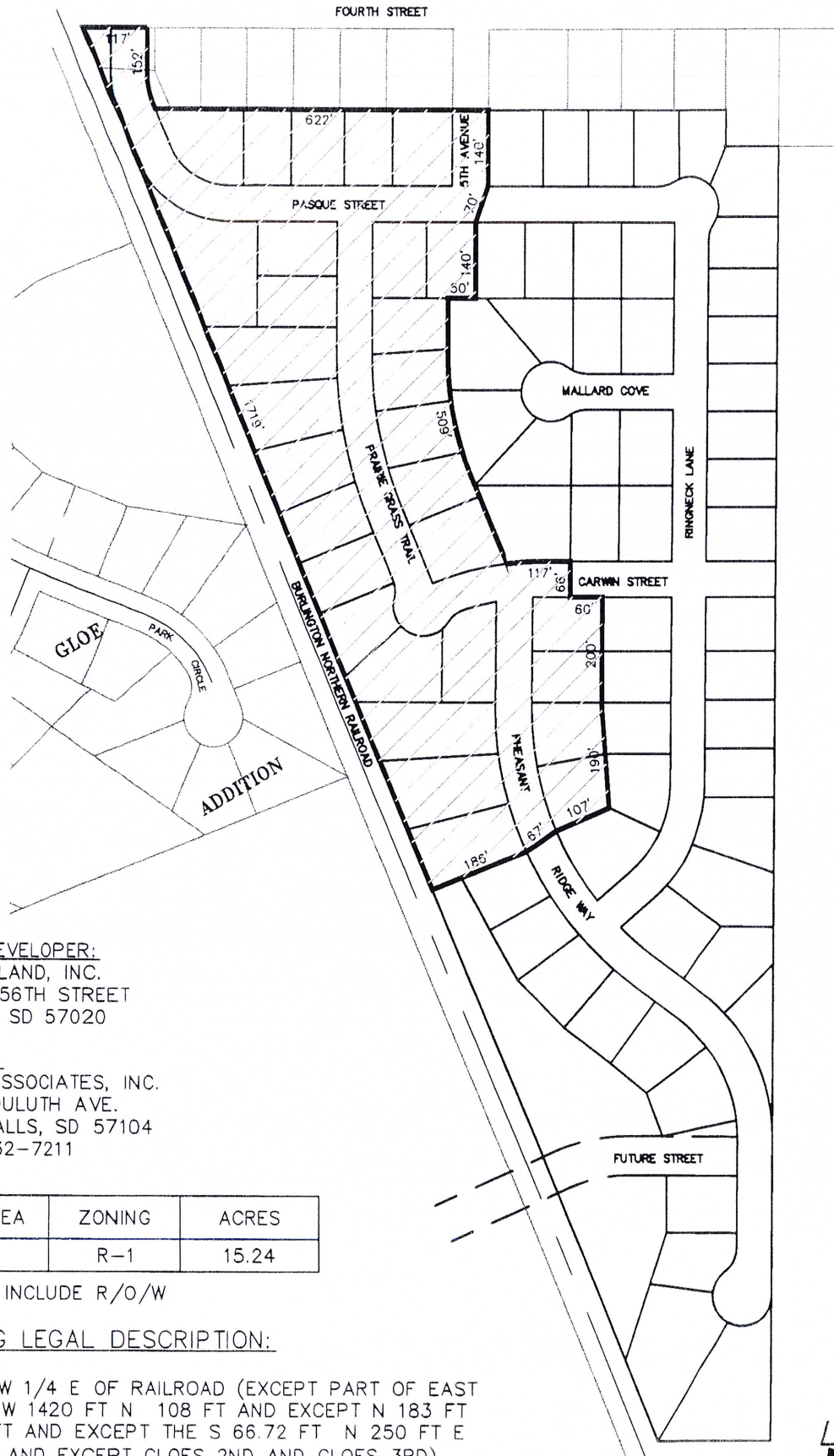
ATTEST:

Linda D. Hunnel
Linda D. Hunnel
Municipal Finance Officer

(MUNICIPAL SEAL)

REZONING EXHIBIT 'A'

PHEASANT RIDGE ADDITION



OWNER/DEVELOPER:

CARWIN LAND, INC.
46820 256TH STREET
CROOKS, SD 57020

ENGINEER:

SAYRE ASSOCIATES, INC.
216 S. DULUTH AVE.
SIOUX FALLS, SD 57104
(605) 332-7211

| SUBAREA | ZONING | ACRES |
|---------|--------|-------|
| A | R-1 | 15.24 |

* ACRES INCLUDE R/O/W

EXISTING LEGAL DESCRIPTION:

PART NW 1/4 E OF RAILROAD (EXCEPT PART OF EAST 132 FT W 1420 FT N 108 FT AND EXCEPT N 183 FT E 100 FT AND EXCEPT THE S 66.72 FT N 250 FT E 9.71 FT AND EXCEPT GLOES 2ND AND GLOES 3RD)
11-102-50 CROOKS CITY UNPLATTED.

Sayre
Associates

216 S. Duluth Avenue • Sioux Falls, SD 57104
Phone: (605) 332-7211 • Fax: (605) 332-7222
Engineers • Surveyors