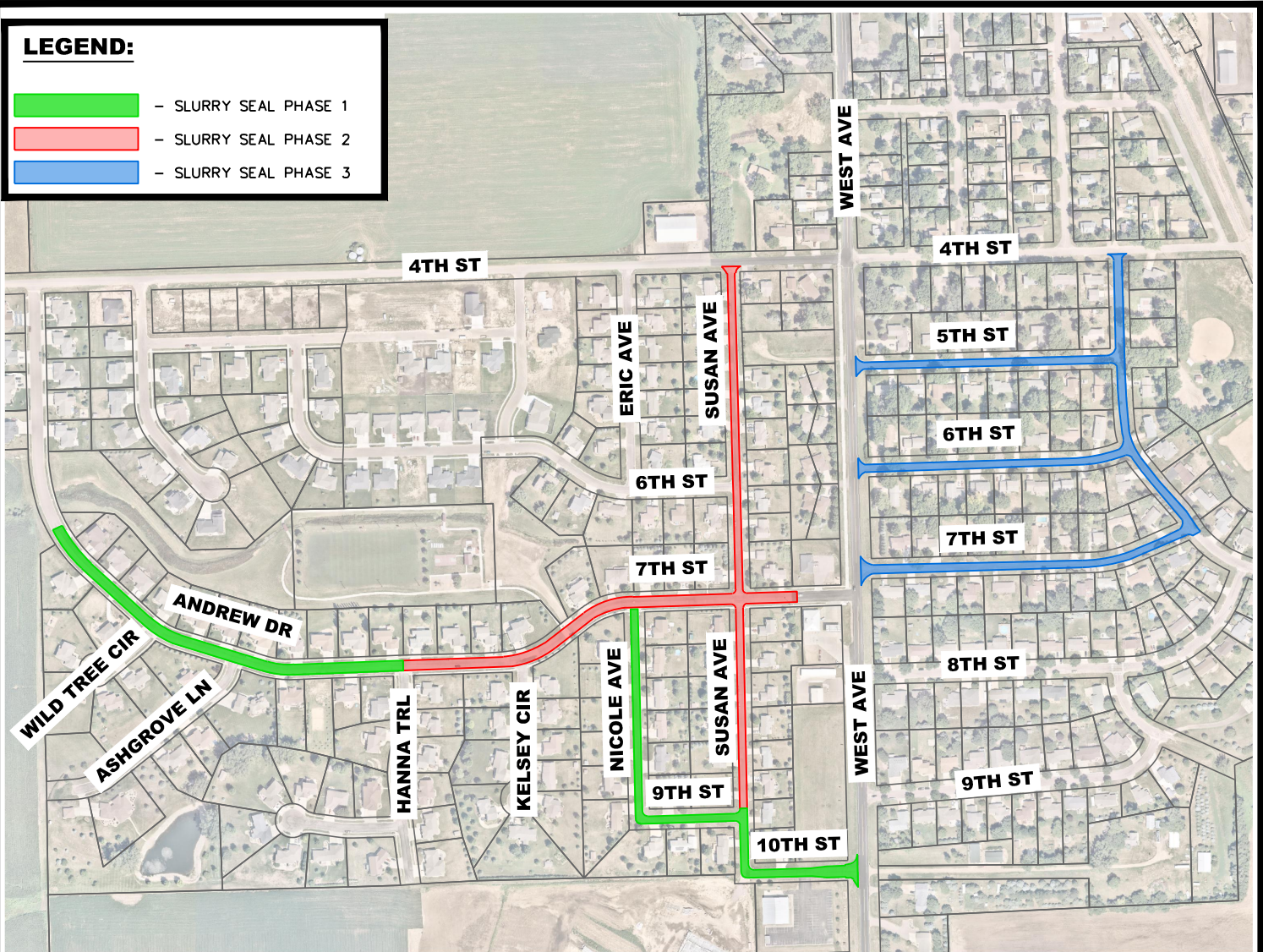


# **LEGEND:**

- SLURRY SEAL PHASE 1
- SLURRY SEAL PHASE 2
- SLURRY SEAL PHASE 3



The City of Crooks has coordinated for a slurry seal to be performed on the in the areas shown on this map.

A slurry seal is a preventative maintenance treatment used to extend the life of a street and helps address minor defects. A slurry seal is a 1/2" layer applied on top of the existing asphalt surface by a paver and is a mixture of asphalt oil, small rock, and other additives.

**During the slurry seal application, there will be no vehicle traffic and no parking on the street until it cures out. Curing time is weather dependent but is typically four to six hours after completion. Phase 1 or Phase 2 will remain open to traffic at all times to limit the distance homeowners may have to park from their property. Access to Hanna Trail will be maintained at all times from either the West or the East, depending on the on-going phase, and may be utilized for nearby homeowner parking as well.**

The Contractor tentatively plans to perform this work the first week of July. It is expected that the work will be performed between 2 working days. Further notification will follow when exact dates are known. Traffic Control will be set up and additional information will be provided prior to commencing with the work.

If you have any questions or special needs before or during this operation, please contact the City Office at (605) 543-5238.