



For rural residents of Cottonwood County, drop off will be at the Landfill 43979 County Road 22, Windom, MN 56101. Proof of address will be required. Drop off is FREE.

Questions? Call Donna Stresemann at 507-831-3781

This location (Windom High School) is for City of Windom residents only, and proof of address will be required. Drop off is FREE.

Please Separate Your Wastes

Residents and Small Businesses of Windom / Cottonwood County

As you clean up after a flood, please protect yourself by wearing waterproof gloves and by washing up with soap afterwards.

Waste transfer station located at Windom High School West parking lot

Drop off time is from 7:30am to 4:00pm

To minimize the impact to the environment and to better control the cleanup costs, please separate your waste into five piles as listed below.

1. Large Appliances and Electronics	Refrigerators, freezers, ovens, dishwashers, air conditioners, furnaces, washing machines, clothes dryers, televisions, computers and monitors.
2. Household Hazardous Waste (HHW) Note: Please put any leaking containers of HHW in a plastic bag or tub. Do not mix wastes. Keep labels with products or write the name on the container so wastes can be identified and safely handled.	<ul style="list-style-type: none"> • Automotive products, such as gas, oil, antifreeze, and parts cleaners • Household cleaners, such as bleach, ammonia, oven cleaners, toilet cleaners and kitchen cleaners • Mercury-containing items, such as thermometers, thermostats and fluorescent light bulbs • Paints and solvents, such as oil or latex paints, stains, thinners, spray paints, acetone, xylene and toluene • Lawn products, including fertilizers and pesticides (such as fungicides, insecticides and herbicides) • Other items that you think should not go into the regular trash, such as mattresses, gas cylinders, batteries, swimming pool chemicals
3. Demolition Waste	Plasterboard (such as Sheetrock), wallboard, wood, pipes, wiring, shingles, cement, insulation, lumber, window glass, and any part of the building structure
4. Municipal Waste	Household garbage, food, lamps, furniture, bedding, clothing, books, magazines, papers, cardboard, small appliances, cookware and dishes, carpet removed from the building, and any asbestos-containing waste
5. Woody Waste	Trees, branches, logs, stumps and shrubs

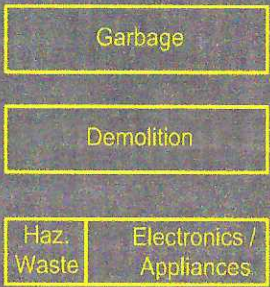
Thank you for your cooperation. We appreciate your help.



In cooperation with the
Minnesota Pollution Control Agency

651-296-6300 or 800-657-3864 toll-free
www.pca.state.mn.us

TEMPORARY DEBRIS DROP-OFF



W.A.H.S.

15th Avenue

17th Street

