

## USED TIRES

### Tire Recycling Program

Call SCMAC for info on drop off days and times at their offices.

### Saginaw County Mosquito Abatement Commission

989-755-5751 or [www.scmac.org](http://www.scmac.org)

Household tires only; no businesses. Up to 10 tires allowed; no rims, no large vehicle tires.

## PROBLEM WASTES PROGRAMMING

Drop-off on scheduled days ONLY. Appointment not needed. Go to website or call for drop-off day schedule and allowed materials. 989-781-9555 [www.recyclemotion.org](http://www.recyclemotion.org)

### Household Special Waste

**Home Chemicals, Paints, Stains, Lawn & Garden Products, Automotive Fluids, Mercury**  
Household waste only; no businesses

### Electronic/E-Waste

**Computers, Printers, TV's**  
Household waste only. No business or schools allowed.

Programs offered through a partnership between **Mid Michigan Waste Authority and Saginaw Dept. of Public Health**

## AGRI-WASTES

### Pesticides, Herbicides, Mercury & Mercury Containing Devices

Open to households, businesses and farms across region. 4th Thursday of month, May - Oct

### Saginaw County Public Health Clean Sweep Program

Appointment required 989-758-3685 [www.saginawpublichealth.org](http://www.saginawpublichealth.org)



## Mid Michigan Waste Authority

### Community Resource Recovery Center

2063 S Miller Rd / Saginaw MI 48609

989-781-9555 Phone

989-781-9559 Fax

[www.recyclemotion.org](http://www.recyclemotion.org)

## IMPORTANT: Community Curbside Solid Waste Program Rules



**How to Prepare Your Materials:**  
**Trash**  
**Recycling**  
**Yard Waste**



## Municipal Program Guidelines for Trash, Recycling & Yard Waste



**The Loop Guide provides curbside solid waste program requirement info for residents of these 34 area Mid Michigan Waste Authority (MMWA) member communities.**

Albee Township  
Bethany Township  
Birch Run - Village  
Birch Run Township  
Blumfield Township  
Brady Township  
Brant Township  
Breckenridge - Village  
Bridgeport Township

Buena Vista Township  
Carrollton Township  
Chapin Township  
Chesaning Township  
Frankenmuth - City  
Frankenmuth Township  
Fremont Township  
James Township  
Jonesfield Township

Kochville Township  
Lakefield Township  
Maple Grove Township  
Marion Township  
Merrill - Village  
Richland Township  
Saginaw - City  
Saginaw Township  
St. Charles - Village

St. Charles Township  
Spaulding Township  
Swan Creek Township  
Thomas Township  
Tittabawassee Township  
Wheeler Township  
Zilwaukee - City



[www.recyclemotion.org](http://www.recyclemotion.org)

# is easier than ever



**With NO-SORT RECYCLING put all your paper, plastics, metal, glass and cardboard in the SAME can**



paper & cardboard



plastics #1, #2, #4 - #7



glass



metal & cans

## DO RECYCLE THESE ITEMS:

### Paper

Newspapers & inserts

Magazines & catalogs

Notebooks & writing paper

Cereal & dry food boxes

Paper towel & toilet paper rolls

Corrugated cardboard boxes

Computer copy paper

Envelopes/Junk mail

Phone books

Shoe & gift boxes

Frozen food boxes

### Plastic

**Plastics must have the recyclable code # in chasing arrows marked somewhere on the item.**

#1 Plastic containers

☒ Beverage bottles

#2 Plastic containers

☒ Milk & water jugs

☒ Detergent bottles

#4 Plastic containers

☒ Squeezable bottles

#5 Plastic containers

☒ Yogurt cups

☒ Margarine tubs

#6 Plastic containers

☒ Aspirin bottles

☒ Food trays

#7 Plastic containers

☒ Baby bottles

### Glass

Clear, green & brown glass

Beverage glasses & plates

**Empty & Rinse all containers. Removing labels is not necessary.**

### Metal

Aluminum cans

Foil food trays

Empty, cleaned paint cans

Metals cans & lids

Aluminum pie plates

## DO NOT RECYCLE:

Plastic grocery bags

#3 Plastics

Any foam items

Plastic wrap

Motor oil bottles

Cooking oil bottles

Blue or black glass

Frosted/mirrored glass

Furniture and plate glass

Light bulbs

Large metal scraps

Coated foil wrappers

Hard cover books

Laundry soap boxes

Soiled napkins & paper towels

Greasy pizza boxes

Large plastic ride-on or playground toys

Waxed-paper cups



**Cardboard Recycling Tip:**  
Flatten & cut all boxes to 3' x 3'

**DO NOT put any recyclables in plastic grocery bags, pet food bags or heating pellet bags.**

## Get a Can or Bin & Get Into RecycleMotion!

Residents may set out an unlimited amount of recyclable paper and container items. Collection is provided as a weekly or bi-weekly service. Contact your municipality for your curbside solid waste services program schedule, or visit MMWA's website: [www.recyclemotion.org](http://www.recyclemotion.org).

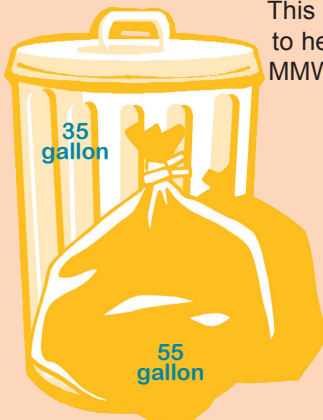
Recycling bins may be available from your local government office. Residents can make their own recycling container(s) by converting any 45 gallon or smaller container into a recycling bin by adding a "RECYCLABLES ONLY" sticker or painting/marketing a large "R" on the container. Stickers are available from your local government office or MMWA. Hint: using a can with wheels and an attached lid makes recycling even easier.

Make sure that all recycling containers follow the 50 lb maximum rule. When possible, flatten containers to maximize space in your recycling bin & the collection vehicle.



The municipal trash, recycling and yard waste program guidelines are in place to provide residents an efficient, cost-effective curbside program. By following these guidelines, you help protect the health and safety of the community and collection workers, and experience quality solid waste services without interruption.

General Solid Waste Program Rules



This guide is sent to residents of all 34 MMWA communities to help avoid service issues. Guidelines are also available on MMWA's website at: [www.recyclemotion.org](http://www.recyclemotion.org).

- Place materials at end of driveway by curb or in right-of-way by 7 am on your collection day.
- Materials not at curb when collection trucks drive by will not be picked up.
- Contact municipality or MMWA for assigned day and any bi-weekly services schedules.

NOTE: Late & improperly prepared set outs are NOT a miss and will not be picked up.

Orange Tags

If materials are not properly prepared, they will not be collected. The collection worker will place an orange tag on the item and check the reason(s) why the item(s) were left at the curb.

To ensure items will be collected on your next service day, please correct all checked issues before placing at curb the following service week.

DID YOU KNOW?  
Bags, cans and bins are lifted by hand into the trucks. Workers make between 700 to 1,100 stops each collection day, picking up 5 to 15 tons of waste materials!

To Report a Missed Pick-Up

If materials that were properly prepared and at the curb by 7 am were missed, call MMWA at 989-781-9555 within one business day to report the issue.

Holidays

Holidays that fall on weekdays cause service to be delayed one day for that day and any other service day the rest of the week. There is no delay in service for holidays falling on a weekend day.

Observed Holidays:

New Year's Day	Independence Day	Thanksgiving Day
Memorial Day	Labor Day	Christmas Day

Weather and Your Trash

Weather in mid Michigan can be windy, wet and very snowy, all of which impact waste materials set out for pick up. Follow these tips to help limit runaway cans, blowing litter, snowplowed trash and keep your collection workers safe.

- If the forecast calls for rain, use lids or fill yard waste bags less full to keep weight down.
- Windy weather causes cans, lids and trash to blow around. To keep streets litter free:
  - Put all trash in bags, even when placing in trash cans
  - Set trash out in bags instead of cans that can blow when empty
  - Hold recyclables until next collection service day
- Following a heavy snowfall, trucks may not be able to navigate drifted or icy roads. If unpassable, collection will not be until the next service week.
- Do not put materials on snow piles or leave buried under snow/slush.
- If weather is questionable, keep materials until your next service day.

Trash & Bulky Items

Trash collection is provided on a weekly basis to single family and duplex dwellings. Three and four unit dwellings are also included in some communities.

- Residents may set out an unlimited\* number of bags\*\* or cans of properly prepared household trash.
- Trash must be securely contained in bags or trash cans.
- Trash cans cannot be more than 35 gallons and bags cannot be more than 55 gallons, and neither can weigh more than 50 pounds.
- Service based on typical weekly setout, with occasional extra volume.
- 2 bulky items allowed each week; see Bulky Items. →
- One bundle of brush is accepted per week; details below.

\* City of Saginaw residents have a 20-bag limit  
\*\* City of Frankenmuth residents must use trash bags only

Bulky Items

Any item over 50 lbs or not fitting into a 35-gallon can or 55 gallon bag is a bulky item. Ex: furniture, carpet rolls, small/large appliances, etc.

- Set out bulky items on your regular trash service day.
  - Do NOT call ahead - no appointments needed.
- Bulky items too big for trash truck will be tagged for collection by a separate bulky truck on a later day.
- Limit two (2) bulky items per week.
- DO NOT remove tagged bulky items from curb unless they have been tagged for being over the 2 qty limit.
- Break down large items, like swing sets and garage doors.
- Do not place any trash on or in bulk items.

Building Materials: Only very small amounts are allowed; whole room remodels require fee-based services not covered under the curbside program.

Carpet: Rolls equivalent to one average room will be considered one bulky item

- Cut into 4' wide pieces & tie or tape into rolls.
- Each roll should weigh no more than 50 lbs.

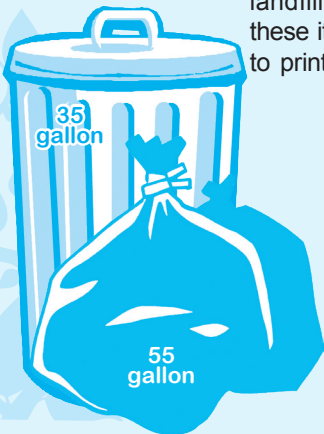
Unacceptable Materials

Look in the Yellow Pages under "Garbage" for companies that handle fee-based removal of materials not allowed in the MMWA curbside program. Materials that are not accepted include:

- Tires, bumpers, other auto parts
- Large amounts of building and remodeling debris:
  - drywall, lumber, piping, bricks, wood, shingles, concrete, paneling, fence/deck boards, etc.
- Items with a gas tank or engine
- Wire fencing, barbed wire, multiple metal posts
- Assembled swing sets / picnic tables / garage doors

Needles/Broken Glass

Put used needles or small glass pieces in a lidded metal can or plastic jug, seal lid with heavy tape, label and place in trash. Criss-cross masking tape over large plate glass pieces.



Landfill Banned Residential Trash Items

Under Michigan law, a number of residential waste items are banned from landfill disposal. Trash haulers face stiff fines if they dump loads containing these materials in the landfill. For more information on proper disposal of these items, call MMWA or go to [recyclemotion.org](http://recyclemotion.org) to print the Landfill-Banned Residential Materials brochure.

Landfill Banned Materials

- Whole motor vehicle tires
- Lead-acid batteries
- Loose needles/syringes
- Homeowner asbestos
- Beverage containers - up to 1 gallon (deposit program containers)
- Yard waste
- Used motor oil

Landfill Disposal Option

Many of the materials not allowed in the curbside program can be brought by a resident directly to a landfill and disposed of for a fee.

There is one operating landfill in Saginaw County. Call ahead for verification of material acceptance and disposal charges.

People's Landfill Waste Management  
4143 E. Rathbun Rd  
Taymouth Twp  
989-777-1145

Yard Waste

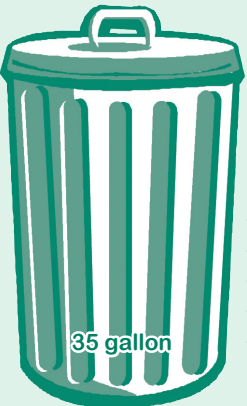
Yard waste collection service is not offered in all areas. Contact your municipality regarding availability or go to MMWA's website at [www.recyclemotion.org](http://www.recyclemotion.org). Yard waste season runs April through November. State law sets requirements on what is yard waste and how it must be handled/disposed.

- Yard waste is defined as grass clippings, yard vegetation, sod without dirt, twigs (less than 2" in diameter) and leaves.
- Place yard waste in 35 gallon or smaller cans or paper yard waste bags; set out the same day as trash collection.
- Do not put Yard Waste in plastic bags.
- All cans and bags must weigh less than 50 lbs each.
- Close bags and use lids on cans if available.
- Twigs may not protrude more than 12" above container.
- Cans need a "Yard Waste" sticker; paper yard waste bags may need a tag in your community. Please contact your municipal office for additional information. (See \* in next column)

Pumpkins/Cornstalks/Decorative Vegetation

- Small amounts (around 4 items) of seasonal decorative vegetation can be set out as trash. Examples include:
  - Pumpkins
  - Ears of corn
  - Real plant door wreaths
  - Gourds
  - Branch swags
- Large quantities of these items are considered yard waste. Handle following the Yard Waste guidelines (see section to left ← ).
- Hay bales and corn stalks are considered yard waste and need to be handled by those rules.
- Large pumpkins, gourds and swags also fall under Yard Waste rules, noted at left. ←

\* City of Frankenmuth has additional yard waste/grass requirements. Contact City at 652-9901 for details.



Unacceptable YW Materials

The items listed below are not allowed in the curbside yard waste program. Most are too big and hard for collection and processing equipment to handle without getting damaged. Look in the area Yellow Pages under "Tree Removal" or "Landscapers" for local companies that can be hired to remove these materials for a fee.

Unacceptable items include:

- Rootballs
- Stumps and tree trunks
- Large shrubs and bushes
- Railroad ties / landscape timbers
- Branches bigger than 2 inches around
- Branches 2" to 6" around are defined as brush (see Brush section → )

Brush / Branches

Brush and larger branches are not yard waste under state law. These items can be set out with your trash, following these guidelines.

- Branches up to 4 feet long and from 2" to 6" around
  - < 2" branches are yard waste and cannot be landfilled
- Small shrubs and bushes that are up to 4 feet in length
- Bundle brush together with twine; no wire or tape
- One (1) bundle of brush allowed with trash per week
  - Brush bundle must be no bigger than 3 feet by 4 feet
- Small amounts can be put in your trash can
  - Follow 50 lb weight limit
  - Branches cannot extend more than 12" above can

Note: Some communities offer extra brush or branch programs. Contact your community for information.

Christmas Trees

Christmas trees are collected as trash at the curb throughout the month of January.

Trees that are buried in snow or frozen to the ground will not be collected.

Large or heavy trees may have to be picked up by the bulk truck, and in those cases, trees will be collected within two days of the resident's regular service day. This service applies only to real Christmas trees that have been used as holiday décor.