

City of Menasha COVID-19 Pandemic Resilient Plan

Data Updates: August 5, 2021

Summary/What's New

- On Tuesday, July 27, the CDC released [updated guidance](#) for fully vaccinated people. The updated guidance recommends that everyone, including those who are fully vaccinated, wear a mask in indoor public settings in areas where transmission is at substantial or high levels. To see the transmission level for your county, visit [this website](#).
 - Face masks must be worn when entering the Menasha Health Department.
- Wisconsin has seen an increase in the number of new cases of COVID-19 recently. The majority of cases are occurring in people who are not fully vaccinated. Like the state, the City of Menasha has also seen a rise in the number of cases of compared to previous weeks. Getting vaccinated against COVID-19 is strongly encouraged.
- Vaccination is still the best tool to protect yourself and others, and prevent serious disease, hospitalization, and death due to COVID-19 and its variants, including the Delta Variant. The Delta variant is highly contagious and is spreading faster than any of the other SARS-CoV-2 variants.
 - WI DHS has a [website to track COVID-19 variants](#) in Wisconsin.
- Testing is available if you have symptoms of COVID-19, if you believe you were exposed to the virus, attended a large social gathering, or if you think you need a test even though you don't have symptoms. Visit our [COVID-19 testing sites webpage](#) for information about where you can go to get tested for COVID-19.
- 11,447 (53.6%) people of 21,359 eligible residents of the 54952 Menasha zip code have received at least one dose of the COVID-19 vaccine. This is 44.5% of the total population of the 54952 zip code.
- WI DHS released a [new dashboard](#) including COVID-19 vaccine data for different geographic boundaries. You can view vaccine data by census tract, municipality, school district, and zip code.
- **ALL Wisconsin residents age 12 and older are eligible to receive the COVID-19 vaccine. Only the Pfizer-BioNTech vaccine is currently authorized to be used for those ages 12-17. Visit the Menasha Health Department's [COVID-19 vaccine webpage](#) for vaccine clinic information.**
 - If you have questions about the COVID-19 vaccine, call: 211 or 877-947-2211. Spanish, Hmong, Chinese Mandarin, Hindi, and Somali language assistance is available. You can also visit [vaccines.gov](#) to find a place to get your FREE COVID-19 vaccine.
 - 211 Wisconsin provides a special directory to find to find pop-up vaccine clinics in the state. To find pop-up vaccine clinics near you, visit [this website](#).
- Currently in the City of Menasha the burden of confirmed COVID-19 cases is high and the activity level is high. The combined case rate for this 2-week period (July 21 – Aug 3) is 121.4 cases per 100,000 population, which is an increase from the case rate of 66.2 from the previous 2-week period (July 14 – July 27). 4 new probable cases were reported in the past two weeks, so the combined confirmed & probable case burden is high and activity level is high.

Background

This data summary provides preliminary data on the cases of COVID-19 in the City of Menasha from July 21, 2021 – Aug 3, 2021. Most data included in this report is for laboratory confirmed cases of COVID-19 (lab-confirmed). Some data is available for probable cases of COVID-19. A person is counted as a probable case of COVID-19 if they are not positive by a confirmatory laboratory test method (PCR/molecular test), but has a positive antigen test OR has symptoms of COVID-19 AND has a known exposure to COVID-19. Case counts utilized for all graphs and tables are based on the date public health staff received and recorded the test results. Numbers here may not represent final case counts for this reporting period.

More Information

Additional resources and information about COVID-19 can be found on the following websites:

- [City of Menasha Health Department COVID-19 webpage](#)
- [Wisconsin Department of Health Services](#)
- [Winnebago County Health Department](#)
- [Calumet County Public Health Division](#)
- [Centers for Disease Control and Prevention](#)

City of Menasha Weekly COVID-19 Status Summary

Number and percent of residents of the Menasha 54952 zip code* by age range who have received at least one dose of the COVID-19 vaccine (as of August 2)

Age Group	Residents who have received at least 1 dose	Age-Specific Population Count	Percent of Age-Specific Population
<12**	0	4,006	0.0%
12-15	390	1,323	29.5%
16-17	239	660	36.2%
18-24	841	2,125	39.6%
25-34	1,476	3,744	39.4%
35-44	1,710	3,416	50.1%
45-54	1,726	3,938	43.8%
55-64	2,173	3,001	72.4%
65+	2,892	3,152	91.8%
Total	11,447	25,729	44.5%

*Menasha residents who have a home address within the 54952 zip code.

** Population data for those under 1 year old is not available. For more information about population in Menasha, please visit: <https://www.unitedstateszipcodes.org/54952/#stats>. There is currently no authorized COVID-19 vaccine for children under 12 years of age.

To view more COVID-19 vaccine data, please visit: <https://www.dhs.wisconsin.gov/covid-19/vaccine-data.htm>

Number and percent of City of Menasha residents who have received the COVID-19 vaccine (as of August 3)

Received at least 1 dose	Completed vaccine series	Population
9,051 (50.0%)	8,614 (47.6%)	18,114

*Vaccine data was retrieved from: <https://www.dhs.wisconsin.gov/covid-19/vaccine-data.htm> under "Municipality" tab. Other demographic data is not yet available.

Case counts, case rate per 100,000 people, burden class, trajectory and activity level in the City of Menasha and the State of Wisconsin for the past two weeks (July 21 – Aug 3)

Note: The case rate, burden class, trajectory class, and activity level reflect both lab-confirmed and probable cases. WI DHS is undergoing continuous data cleaning and data may change as it is reviewed.

	Case Count for Past 2 Weeks (lab-confirmed & probable)	Case Rate (per 100,000 people)	Burden Class*	Trajectory Class (N/A=no statistically significant change; N/D=no data available)	Activity Level*	Population**
City of Menasha	22	121.5	High	N/D	High	18,114
Wisconsin	11,090	191.8	High	Growing	High	

*Burden Class is based off of the case rate per 100,000 people in the past two weeks. Visit the DHS website for more information about Burden and Activity Level visit; <https://www.dhs.wisconsin.gov/covid-19/local.htm>

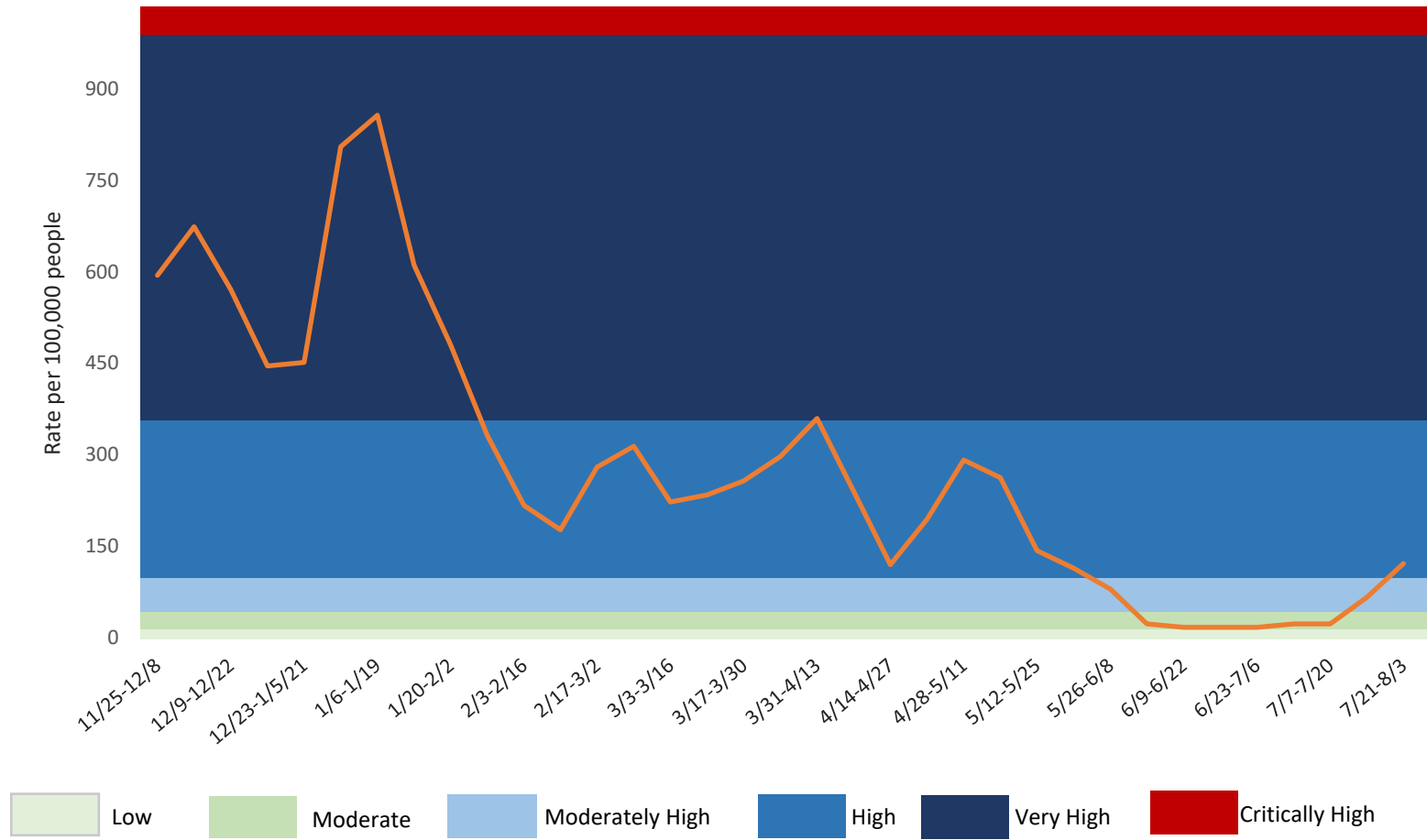
**Population for the City of Menasha was retrieved from

<https://data.census.gov/cedsci/table?q=Menasha%20City,%20Wisconsin&t=Age%20and%20Sex&tid=ACSST5Y2019.S0101&hidePreview=false>

Burden (lab-confirmed & probable case rate)

Burden Status	Case Rate per 100,000 residents in the past two weeks	City of Menasha number of cases in the past two weeks
Low	Case rate is less than or equal to 10.	Less than 2 cases.
Moderate	Case rate is greater than 10, but less than or equal to 50.	Greater than 1 cases, but less than or equal to 9 cases.
Moderately High	Case rate is greater than 50, but less than or equal to 100.	Greater than 9 cases, but less than or equal to 18 cases.
High	Case rate is greater than 100, but less than or equal to 350.	Greater than 18 cases, but less than or equal to 63 cases.
Very High	Case rate is greater than 350, but less than or equal to 1,000.	Greater than 63 cases, but less than or equal to 181 cases.
Critically High	Case rate is greater than 1,000.	Greater than 181 cases.

City of Menasha COVID-19 laboratory confirmed and probable case rate trend and burden by 2-week periods*



*see the table above for more information about burden status

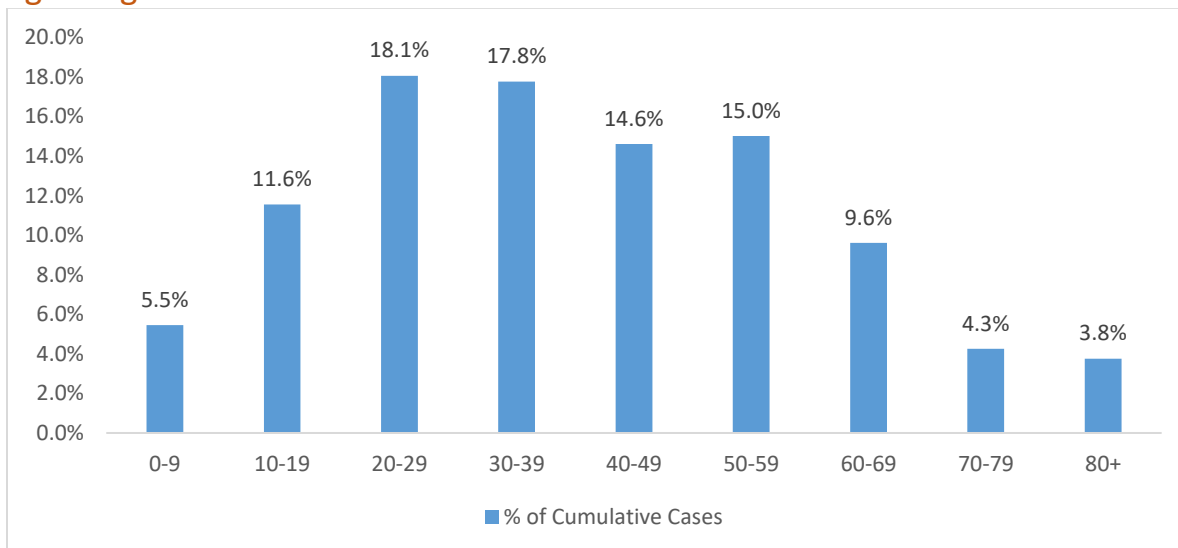
Testing metrics in the City of Menasha from the last 5 reporting periods

Metric	Reporting Period				
	Current: 7/21 – 8/3	7/14 - 7/27	7/7 - 7/20	6/30 - 7/13	6/23 - 7/6
7-Day Average Percent Positive	17.4%	13.3%	28.6%	1.0%	1.5%
7-Day Average New Test Results	9.9	6.4	1.0	14.9	9.6
7-Day Average New Cases (lab-confirmed & probable)	1.7	1.4	0.3	0.3	0.3

Cumulative total and percentage of laboratory confirmed cases of COVID-19 by age range

Age Group	Cumulative total cases	
	Number of Cases	Percentage of Total Cases
0-9	109	5.5%
10-19	231	11.6%
20-29	361	18.1%
30-39	355	17.8%
40-49	292	14.6%
50-59	300	15.0%
60-69	192	9.6%
70-79	85	4.3%
80+	75	3.8%
Total	2,000	100%

Cumulative total and percentage of laboratory-confirmed cases of COVID-19 by age range



Case Incidence Metrics

Metric	Thresholds	Current Status
Centers for Disease Control and Prevention: City of Menasha Total New Cases per 100,000 in the past 7 days*	Blue (Low Transmission): 0-9 Yellow (Moderate Transmission): 10-49 Orange (Substantial Transmission): 50-99 Red (High Transmission): ≥ 100	66.2 per 100,000 / 7 days
WI Department of Health Services: Menasha Joint School District Boundary* Confirmed Case Incidence per 100,000 (7-day rolling average)	Red: >25 Yellow: $1 < 10$ Orange: $10 < 25$ Green: < 1	10.7 cases per 100,000 / day

* To read more about the Centers for Disease Control and Prevention’s Level of Community Transmission, visit this website: <https://covid.cdc.gov/covid-data-tracker/#county-view>

Additional Metrics

Metric	Thresholds	Current Status	
Testing	Percent PCR Positive Tests (7-day average)	Red: $>10\%$ Yellow: 5-10% Green: $<5\%$	17.4% positive tests / day
	Daily Number of Tests (7-day average)	Red: <14 tests/day Yellow: 14-28 tests/day Green: >28 tests/day	9.9 tests / day
Public Health Contact Timeliness	Disease Investigation	Red: Not able to contact all confirmed cases within 24 hours Green: Able to contact all confirmed cases within 24 hours	Able to contact all within 24 hours
	Contact Tracing	Red: PH is not able to contact all within 48 hours Green: PH is able to contact all within 48 hours	Able to contact within 48 hours
Hospital Capacity*	Percentage of hospital inpatient beds in the community that are occupied.	Red: $> 90\%$ Yellow: 80-90% Green: $<80\%$	92.5% of inpatient beds occupied
	Percentage of intensive care unit beds in the community that are occupied.	Red: $> 90\%$ Yellow: 80-90% Green: $<80\%$	93.0% ICU beds occupied
	Percentage of hospital inpatient beds in the community that are occupied by patients with COVID-19.	Red: $>15\%$ Yellow: 10-15% Light Green: 5-10% Dark Green: $<5\%$	1.9% beds occupied by patients with COVID-19

*Hospital capacity data are from the Emergency Management Resource (EMResource) system. Reporting is not mandatory. Hospital capacity data is collected and reported at the Healthcare Emergency Readiness Coalition (HERC) level. The City of Menasha is a part of HERC 6, or the Fox Valley HERC. Hospital capability information at the state and HERC level can be found here: <https://www.dhs.wisconsin.gov/covid-19/hosp-data.htm#capabilities>