



City of Menasha Health Department  
 COVID-19 Weekly Data Summary



**Public Health**  
 Prevent. Promote. Protect.

August 6, 2020

Summary

- Currently in the City of Menasha the burden of confirmed COVID-19 cases is high and the activity level is high.
- The case rate for this 2-week period (July 22 – August 4) is 148.5 cases per 100,000 population, an increase from a case rate of 119.9 cases per 100,000 population in the previous 2-week period (July 15 – July 28).
- In the most recent week (July 29 – August 4) the number of confirmed cases age 70 years or older jumped from 5 to 9. This is an increase of 4 cases in just one week, which is an 80% increase in cases for this age group.
- Currently, disease investigators are able to contact all confirmed cases within 24 hours of the confirmed cases being communicated to the health department.

More Information

Additional resources and information about COVID-19 can be found on the following websites:

- [City of Menasha Health Department COVID-19 webpage](#)
- [Wisconsin Department of Health Services](#)
- [Centers for Disease Control and Prevention](#)
- [Winnebago County Health Department](#)
- [Calumet County Public Health Division](#)

Laboratory confirmed cases of COVID-19 in the City of Menasha for the past two weeks (July 22 – August 4)

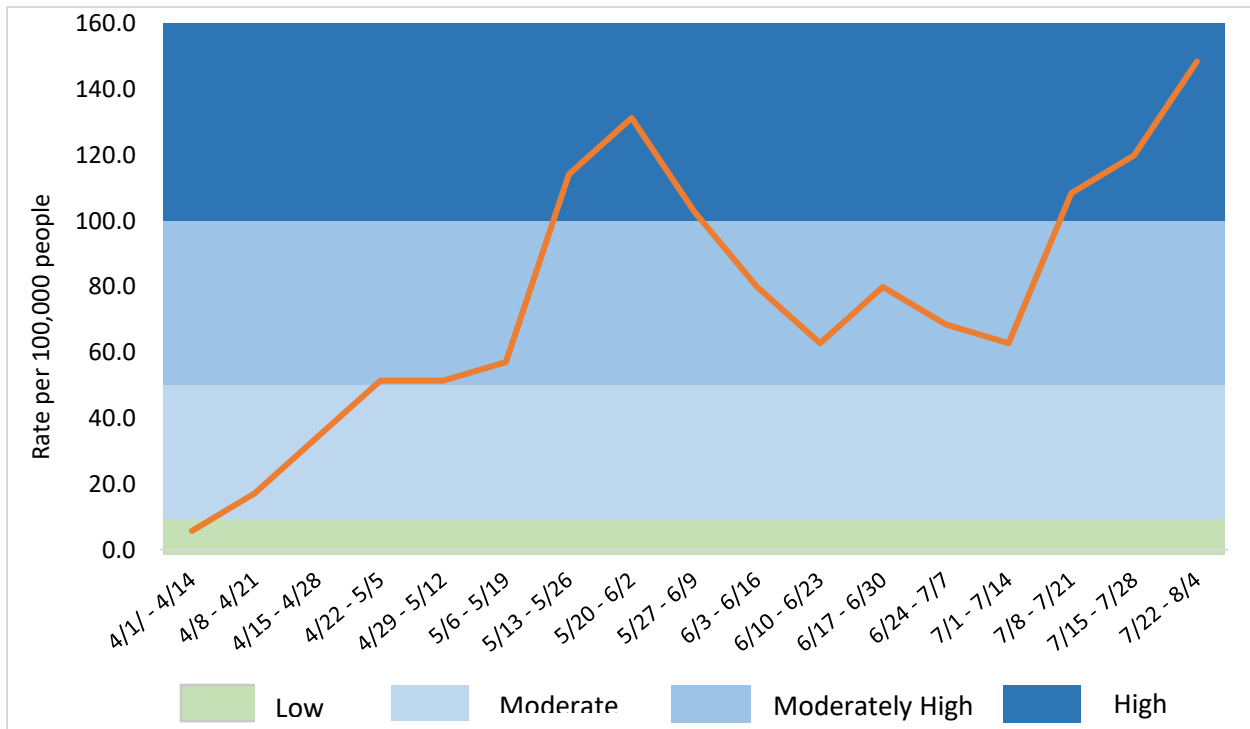
Confirmed Case Count for past 2 weeks	Case Rate (per 100,000 people)	Burden*	Population**
26	148.5	High	17,510

\*Burden is based off of the case rate per 100,000 people in the past two weeks. See the next table for more information on Burden Status for the City of Menasha. Visit the DHS website for more information on this indicator at the state and county level <https://www.dhs.wisconsin.gov/covid-19/local.htm>

\*\*Population for the City of Menasha was retrieved from [https://doa.wi.gov/DIR/Final\\_Ests\\_Muni\\_2019.pdf](https://doa.wi.gov/DIR/Final_Ests_Muni_2019.pdf)

Burden Status	Case Rate per 100,000 residents in the past two weeks	City of Menasha Number of cases
Low	Case rate is less than or equal to 10.	Less than 2 cases.
Moderate	Case rate is greater than 10, but less than or equal to 50.	Greater than 1 cases, but less than or equal to 8 cases.
Moderately High	Case rate is greater than 50, but less than or equal to 100.	Greater than 8 cases, but less than or equal to 17 cases.
High	Case rate is greater than 100.	Greater than 17 cases.

City of Menasha COVID-19 case rate trend and burden by two-week periods\*

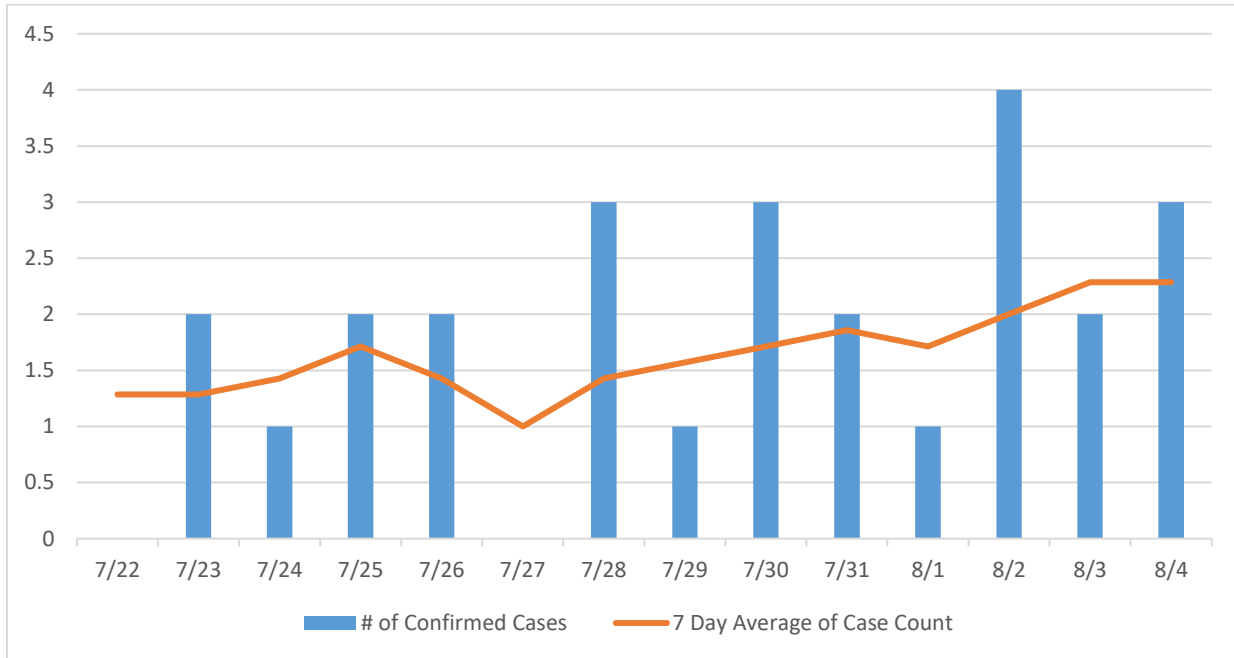


\*see the table above for more information about burden status.



**Public Health**  
Prevent. Promote. Protect.

Number of confirmed COVID-19 cases in the City of Menasha in the past two weeks (July 22 – August 4) and the 7 day average



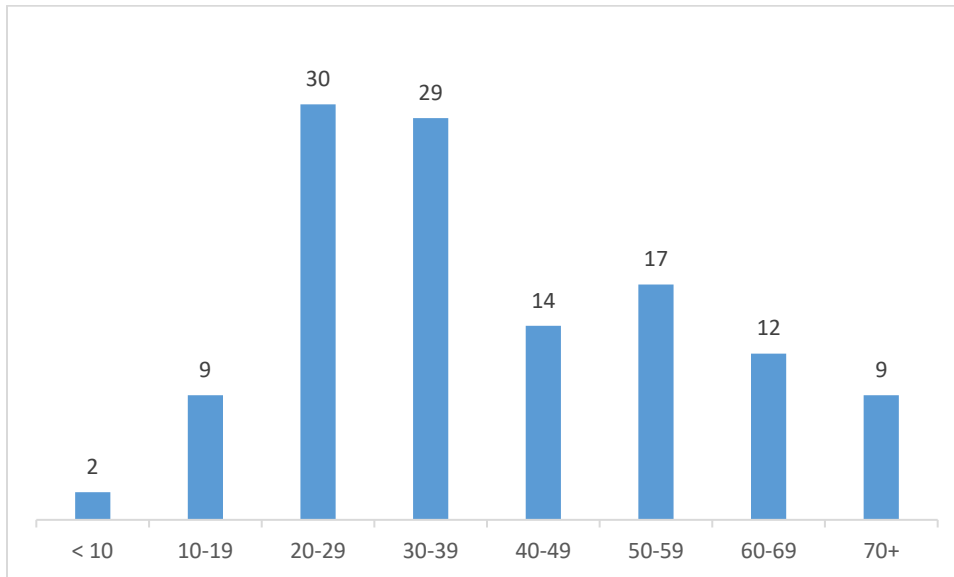
Number of laboratory confirmed cases of COVID-19 by age in the past two weeks (July 22 – August 4)

Age Group	Number of Cases	Percentage of Total Cases in Past Two Weeks
<10	0	0.0%
10-19	2	7.7%
20-29	7	26.9%
30-39	4	15.4%
40-49	2	7.7%
50-59	4	15.4%
60-69	3	11.5%
70+	4	15.4%
<b>Total</b>	<b>26</b>	<b>100%</b>



**Public Health**  
Prevent. Promote. Protect.

Cumulative number of laboratory confirmed cases of COVID-19 by age (total number of cases = 122)



Active cases of COVID-19 and total number of laboratory confirmed cases in the City of Menasha (as of August 4)

Active Cases		Total Cases
Number of Active Cases	Percent of Total Confirmed Cases	Total Number of Confirmed Cases
22	18.0%	122