



Public Health
Prevent. Promote. Protect.

City of Menasha COVID-19 Pandemic Resilient Plan

Data Updates: July 8, 2021

Summary/What's New

- WI DHS has updated the way data is reported. The case rate, burden class, trajectory class, and activity level now includes both lab-confirmed **and** probable cases. Some of the City of Menasha data in this report will now also reflect this change.
- The CDC updated their [COVID-19 variants webpage](#) to include a new variant of concern, B.1.617.2, commonly known as the Delta variant. To track COVID-19 variants in the Wisconsin, please visit [this website](#). Two cases of this variant have been reported in the Fox Valley region to date.
- COVID-19 vaccines have shown to be safe and highly effective at preventing disease. The CDC released [guidance](#) for fully vaccinated individuals, stating they can resume activities they did before the pandemic without wearing a mask, with some exemptions.
 - If you are unvaccinated or not fully vaccinated, please review these [CDC recommendations](#).
 - The City of Menasha Health Department released a [Public Health Advisory](#) on Wednesday, May 26 adopting the CDC's guidance for fully vaccinated individuals. Everyone must still wear a mask when entering the Menasha Health Department.
 - International travel information can be found [here](#).
- 10,999 (51.5%) people of 21,359 eligible residents of the 54952 Menasha zip code have received at least one dose of the COVID-19 vaccine. This is 42.7% of the total population of the 54952 zip code.
- WI DHS released a [new dashboard](#) to include COVID-19 vaccine data according to different geographic boundaries. You can now view vaccine data by census tract, municipality and school district.
- **ALL Wisconsin residents age 12 and older are eligible to receive the COVID-19 vaccine. Only the Pfizer-BioNTech vaccine is currently authorized to be used for those ages 12-17.**
 - Vaccine trials remain underway to study vaccine safety and effectiveness in younger children.
 - If you have questions about the COVID-19 vaccine, call: 211 or 877-947-2211. Spanish, Hmong, Chinese Mandarin, Hindi, and Somali language assistance is available. You can also visit [vaccines.gov](#) to find a place to get your FREE COVID-19 vaccine.
 - 211 Wisconsin provides a special directory to find to find pop-up vaccine clinics in the state. To find pop-up vaccine clinics near you, visit [this website](#).
 - Visit this [website](#) for information about what happens after you receive the vaccine.
 - You can find information about the Menasha Health Department's COVID-19 vaccine clinics on our [website](#).
- You should still get a COVID-19 test if you have symptoms, if you believe you were exposed to the virus, or if you think you need a test even though you don't have symptoms. Visit our [COVID-19 testing sites webpage](#) for information about where you can go to get tested for COVID-19. Antigen tests and PCR tests are available in the community.
- Currently in the City of Menasha the burden of confirmed COVID-19 cases is moderate and the activity level is medium. The combined case rate for this 2-week period (June 23 – July 6) is 17.1 cases per 100,000 population, which is the same case rate from the previous 2-week period (June 16 – June 29). 1 new probable case was reported in the past two weeks, so the combined confirmed & probable case burden is moderate and activity level is medium.

Background

This data summary provides preliminary data on the cases of COVID-19 in the City of Menasha from June 23, 2021 – July 6, 2021. Most data included in this report is for laboratory confirmed cases of COVID-19 (lab-confirmed). Some data is available for probable cases of COVID-19. A person is counted as a probable case of COVID-19 if they are not positive by a confirmatory laboratory test method (PCR/molecular test), but has a positive antigen test OR has symptoms of COVID-19 AND has a known exposure to COVID-19. Case counts utilized for all graphs and tables are based on the date public health staff received and recorded the test results. Numbers here may not represent final case counts for this reporting period.

More Information

Additional resources and information about COVID-19 can be found on the following websites:

- [City of Menasha Health Department COVID-19 webpage](#)
- [Wisconsin Department of Health Services](#)
- [Winnebago County Health Department](#)
- [Calumet County Public Health Division](#)
- [Centers for Disease Control and Prevention](#)

City of Menasha Weekly COVID-19 Status Summary

Number and percent of total Menasha residents* by age range who have received at least one dose of the COVID-19 vaccine (as of July 6)

Age Group	Residents who have received at least 1 dose	Age-Specific Population Count	Percent of Age-Specific Population
<12**	0	4,006	0.0%
12-15	312	1,323	23.6%
16-17	212	660	32.1%
18-24	783	2,125	36.8%
25-34	1,407	3,744	37.6%
35-44	1,653	3,416	48.4%
45-54	1,678	3,938	42.6%
55-64	2,093	3,001	69.7%
65+	2,861	3,152	90.8%
Total	10,999	25,729	42.7%

*Menasha residents who have a home address within the 54952 zip code.

** Population data for those under 1 year old is not available. For more information about population in Menasha, please visit: <https://www.unitedstateszipcodes.org/54952/#stats>. Only those ages 12 years and up are eligible to receive the Pfizer-BioNTech COVID-19 vaccine. There is currently no authorized COVID-19 vaccine for children under 12 years of age.

To view more COVID-19 vaccine data, please visit: <https://www.dhs.wisconsin.gov/covid-19/vaccine-data.htm>

Case counts, case rate per 100,000 people, burden class, trajectory and activity level in the City of Menasha and the State of Wisconsin for the past two weeks (June 23 – July 6)

Note: The case rate, burden class, trajectory class, and activity level reflect both lab-confirmed and probable cases. WI DHS is undergoing continuous data cleaning and data may change as it is reviewed.

	Case Count for Past 2 Weeks (lab-confirmed & probable)	Case Rate (per 100,000 people)	Burden Class*	Trajectory Class (N/A=no statistically significant change)	Activity Level**	Population***
City of Menasha	3	17.1	Moderate	N/A	Medium	17,510
Wisconsin	1,258	21.8	Moderate	N/A	Medium	

*Burden Class is based off of the case rate per 100,000 people in the past two weeks. Visit the DHS website for more information <https://www.dhs.wisconsin.gov/covid-19/local.htm>

**For more information about Activity Level data visit: <https://www.dhs.wisconsin.gov/covid-19/local.htm>

***Population for the City of Menasha was retrieved from https://doa.wi.gov/DIR/Final_Ests_Muni_2019.pdf

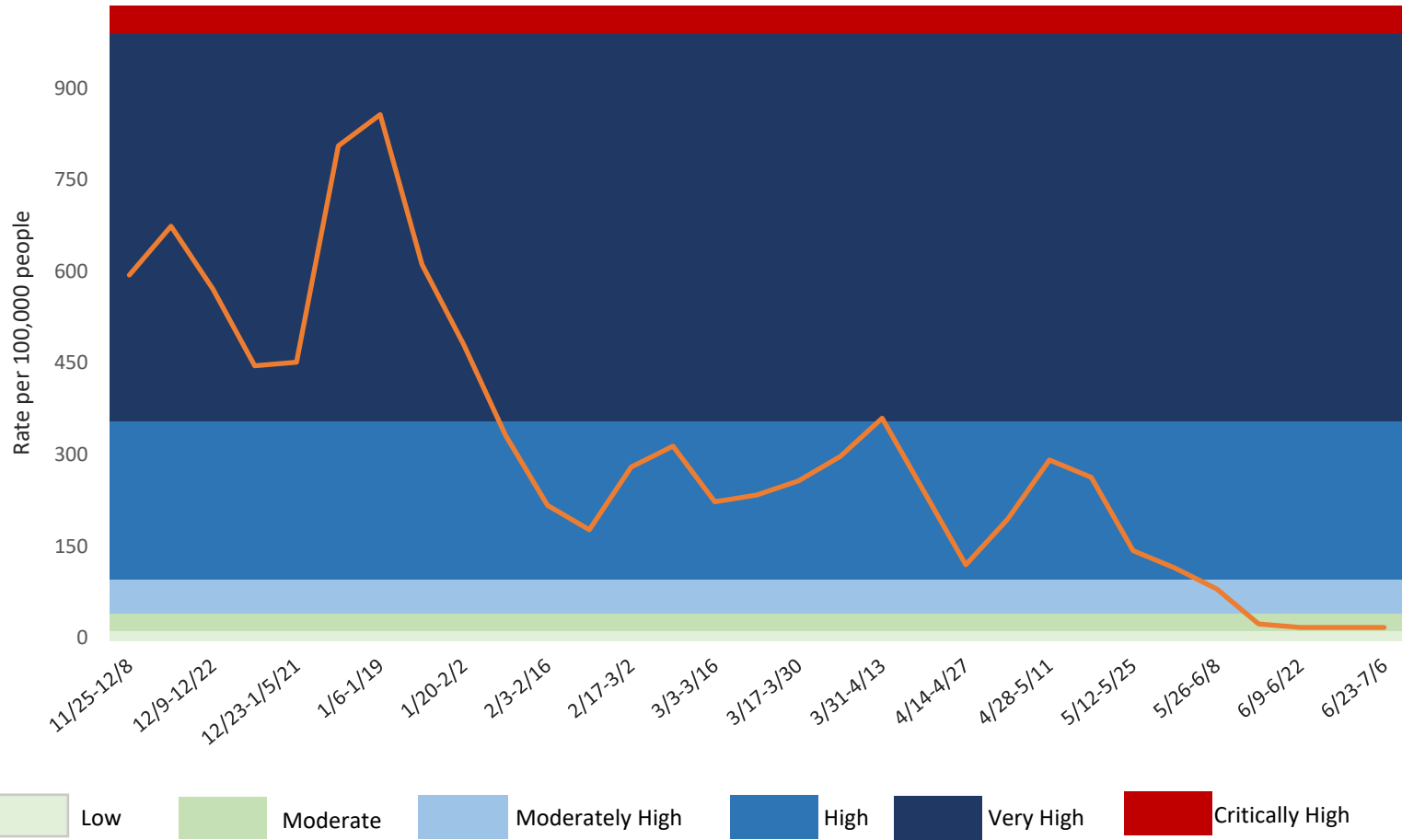
Wisconsin DHS Framework

The Wisconsin Department of Health Services (DHS) has developed and released a framework to guide decision-makers based on the activity levels in local jurisdictions in response to the current activity of COVID-19 in the community. The current categories for activity level are Low, Medium, High, Very High, and Critically High, and provide recommendations for mitigation strategies for each activity level category for jurisdictions to help guide the decision making process.ⁱⁱ The full document can be viewed here: <https://www.dhs.wisconsin.gov/publications/p02789.pdf>

Burden (lab-confirmed case rate)

Burden Status	Case Rate per 100,000 residents in the past two weeks	City of Menasha number of cases in the past two weeks
Low	Case rate is less than or equal to 10.	Less than 2 cases.
Moderate	Case rate is greater than 10, but less than or equal to 50.	Greater than 1 cases, but less than or equal to 8 cases.
Moderately High	Case rate is greater than 50, but less than or equal to 100.	Greater than 8 cases, but less than or equal to 17 cases.
High	Case rate is greater than 100, but less than or equal to 350.	Greater than 17 cases, but less than or equal to 61 cases.
Very High	Case rate is greater than 350, but less than or equal to 1,000.	Greater than 61 cases, but less than or equal to 175 cases.
Critically High	Case rate is greater than 1,000.	Greater than 175 cases.

City of Menasha COVID-19 laboratory confirmed and probable case rate trend and burden by 2-week periods*



*see the table above for more information about burden status

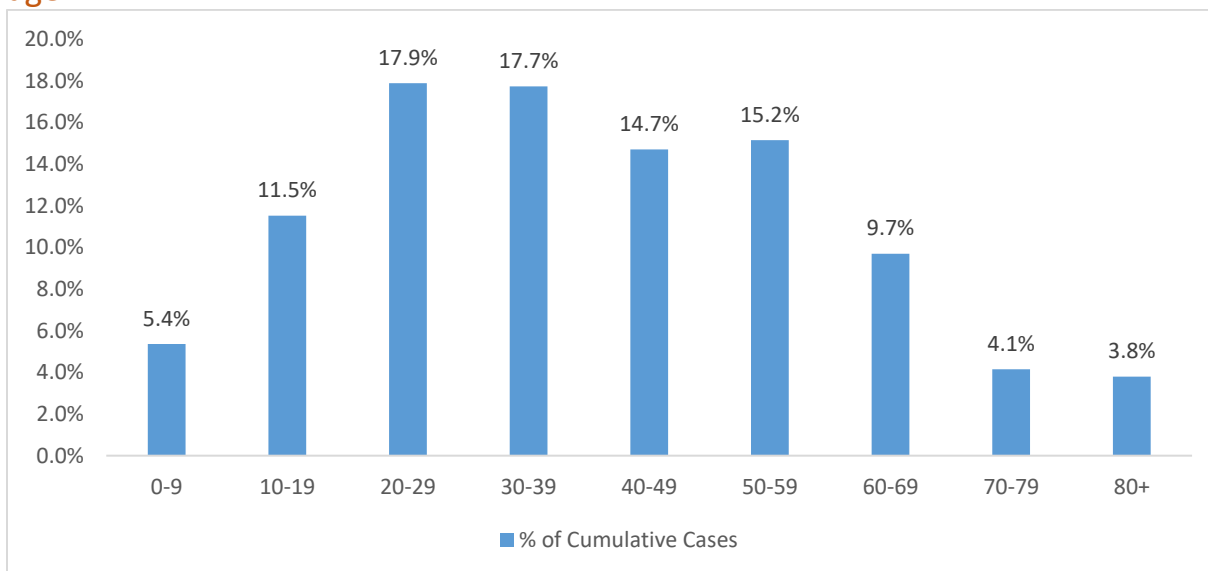
Testing metrics in the City of Menasha from the last 5 reporting periods

Metric	Reporting Period				
	Current: 6/23 – 7/6	6/16 - 6/29	6/9 - 6/22	6/2 - 6/15	5/26 – 6/8
7-Day Av. Percent Positive	1.5%	4.5%	6.3%	7.1%	12.5%
7-Day Av. New Test Results	9.6	3.1	4.6	2.0	3.4
7-Day Av. New Cases (lab-confirmed & probable)	0.3	0.1	0.3	0.1	0.4

Cumulative total and percentage of laboratory confirmed cases of COVID-19 by age

Age Group	Cumulative total cases	
	Number of Cases	Percentage of Total Cases
0-9	106	5.4%
10-19	228	11.5%
20-29	354	17.9%
30-39	351	17.7%
40-49	291	14.7%
50-59	300	15.2%
60-69	192	9.7%
70-79	82	4.1%
80+	75	3.8%
Total	1,979	100%

Cumulative total and percentage of laboratory-confirmed cases of COVID-19 by age



Metrics for Suppression (Harvard Global Health)

The Harvard Global Health Institute created a document containing metrics for COVID-19 suppression, a framework to use as a guide for policymakers and the public. This framework includes recommendations that include key metrics that can be used as an evaluation tool for COVID-19 response and mitigation. Looking at the daily case incidence (# of daily new cases per 100,000) can determine which category the jurisdiction is currently in and how to best respond. Decision-makers should evaluate and review the different phasing plans to determine which strategies to employ at the current period of time.ⁱ

Risk Levels** (Case Incidence per 100,000)	Intensity of Control Effort Needed	
Green (<1)	Daily new cases per 100,000 people	On track for containment, conditional on continuing use of viral testing and contact tracing
Yellow (1<5)	Daily new cases per 100,000 people	Strategic choices must be made about which package of non-pharmaceutical interventions to use for control
Yellow (5<10)	Daily new cases per 100,000 people	Strategic choices must be made about which package of non-pharmaceutical interventions to use for control
Orange (10<25)	Daily new cases per 100,000 people	Strategic choices must be made about which package of non-pharmaceutical interventions to use for control. Stay-at-home orders are advised, unless viral testing and contact tracing capacity are implementable at levels meeting surge indicator standards.
Red (>25)	Daily new cases per 100,000 people	Stay at home-orders necessary

**Risk levels (Harvard Global Health Institute) are determined by case incidence per 100,000 people (7-day rolling average).

Case Incidence

	Metric	Thresholds	Current Status
Case Incidence	City of Menasha Confirmed Case Incidence per 100,000 (7-day rolling average)	Red: >25 Yellow: 1<10 Orange: 10<25 Green: <1	0.8 cases per 100,000 / day

Additional Metrics

Testing	Percent PCR Positive Tests (7-day average)	Red: >10% Yellow: 5-10% Green: <5%	1.5% positive tests / day
	Daily Number of Tests (7-day average)	Red: <14 tests/day Yellow: 14-28 tests/day Green: >28 tests/day	9.6 tests / day
Public Health Contact Timeliness	Disease Investigation	Red: Not able to contact all confirmed cases within 24 hours Green: Able to contact all confirmed cases within 24 hours	Able to contact all within 24 hours

	Contact Tracing	Red: PH is not able to contact all within 48 hours Green: PH is able to contact all within 48 hours	Able to contact within 48 hours
Hospital Capacity*	Percentage of hospital inpatient beds in the community that are occupied.	Red: > 90% Yellow: 80-90% Green: <80%	90.7% of inpatient beds occupied
	Percentage of intensive care unit beds in the community that are occupied.	Red: > 90% Yellow: 80-90% Green: <80%	92.8% ICU beds occupied
	Percentage of hospital inpatient beds in the community that are occupied by patients with COVID-19.	Red: >15% Yellow: 10-15% Light Green: 5-10% Dark Green: <5%	0.0% beds occupied by patients with COVID-19

*Hospital capacity data are from the Emergency Management Resource (EMResource) system. Since reporting is not mandatory, the data shown here may not accurately represent the current healthcare system capacity in our region. Hospital capacity data is collected and reported at the Healthcare Emergency Readiness Coalition (HERC) level. The City of Menasha is a part of HERC 6, or the Fox Valley HERC. Hospital capability information at the state and HERC level can be found here: <https://www.dhs.wisconsin.gov/covid-19/hosp-data.htm#capabilities>

ⁱ Harvard Global Health Institute, Center for Ethics, *Key Metrics for COVID Suppression*. 2020. Retrieved from: https://globalepidemics.org/wp-content/uploads/2020/06/key_metrics_and_indicators_v4.pdf

ⁱⁱ Wisconsin Department of Health Services, *Slowing the Spread of COVID-19: Mitigation Strategies for Wisconsin Communities*. 2020. Retrieved on January 4, 2021 from: <https://www.dhs.wisconsin.gov/publications/p02789.pdf>