

It is expected that a Quorum of the Personnel Committee, Board of Public Works, Plan Commission and Administration Committee will be attending this meeting: (although it is not expected that any official action of any of those bodies will be taken)

**CITY OF MENASHA  
SUSTAINABILITY BOARD  
Common Council Chambers  
100 Main Street, Menasha  
Room 132  
January 18, 2018**

**1:00 PM**

**AGENDA**

**A. CALL TO ORDER**

**B. ROLL CALL/EXCUSED ABSENCES**

**C. PUBLIC COMMENTS ON ANY MATTER OF CONCERN TO THE SUSTAINABILITY BOARD  
(five (5) minute time limit for each person)**

**D. MINUTES TO APPROVE**

1. November 16, 2017

**E. COMMUNICATIONS**

1. Renewable Energy Solar Garden Review

**F. REPORTS**

**G. ACTION ITEMS**

**H. DISCUSSION**

1. City of Menasha Energy Usage
2. Waste Management
3. Spring Electronics Recycling Event (May 19, 2018)
4. Fall Electronics Recycling Event (set date)
5. Livable Communities
  - a. Urban Forestry
6. Menasha Farm Fresh Market
7. Transportation
  - a. Wayfinding
8. Website
9. Member Recruitment

**I. ADJOURNMENT**

"Menasha is committed to its diverse population. Our Non-English speaking population and those with disabilities are invited to contact the Menasha City Clerk at 967-3603 24-hours in advance of the meeting for the City to arrange special accommodations."

**CITY OF MENASHA  
SUSTAINABILITY BOARD  
Common Council Chambers  
100 Main Street, Menasha  
Thursday, November 16, 2017  
Minutes**

**A. CALL TO ORDER**

Meeting called to order by Linda Stoll at 1:04 p.m.

**B. ROLL CALL/EXCUSED ABSENCES**

Present: Linda Stoll, Kathy Thunes, Roger Kanitz, Roni Kasperek

Also Present: Donald Merkes

**C. PUBLIC COMMENTS ON ANY MATTER OF CONCERN TO THE SUSTAINABILITY BOARD**

(five (5) minute time limit for each person) -- No one spoke

**D. MINUTES TO APPROVE**

No action

**E. COMMUNICATIONS**

About 60 people attended sustainability seminar at FVTC including several from Menasha

**F. REPORTS**

**G. DISCUSSION ITEMS**

1. City of Menasha Energy Usage

New City Christmas decorations (snowflakes are LED)

2. Waste Management

Would there be potential to explore audit of City Center recycling and waste

3.. Electronics Recycling Event

Sign up for 2018 events

4. Livable Communities

Discussed buckthorn removal project at Clovis Grove Park

Trestle trail announced as winner of "Great Places in Wisconsin Award"

Discussed walking trail locations connecting to Loop the Lake and downtown

5. Menasha Farm Fresh Market Menasha Farm Fresh Market

Discussed recruitment for 2018 market including music

6. Transportaton

ECWRP working on 41 corridor study and bus transportation options from Green Bay to Fond du lac

7. Member Recruitment

Discussion on recruitment of new members

**H. ADJOURNMENT**

Motion made by Kathy Thunes and seconded Roger Kanitz by to adjourn at 1:58p.m. Motion carried.

*Minutes submitted by DJM*

Based on our Mayor's comment about the potential of a solar garden project here in Menasha this past Fall, I am writing this summary of events and conferences that I have attended which may offer us some guidance on this type of project in the future. The events I reference are:

- The presentation Rep. Amanda Stuck made on her visit to Germany on behalf of Wisconsin in her role as a member of the Wisconsin Energy Utilities Committee.
- The recent Door County Climate Table Conference on the State of Renewable Energy in Wisconsin. This was led by Roy Thilly, the former CEO of WPPI. (The second half of conference was postponed due to weather on Monday!)
- Past Solar tours of the SCA solar garden led by Mike Dillon. I made a request for a follow-up visit/report on this project that could either be an informal meeting or a presentation at the next SCN meeting which will be held in Menasha this Spring.

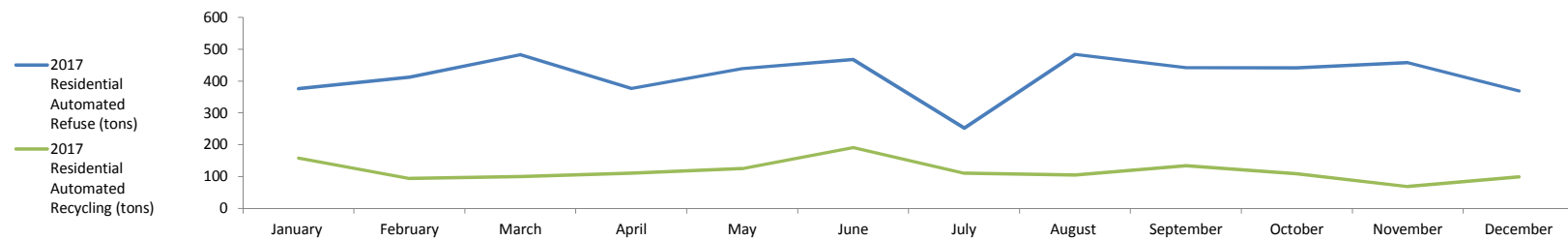
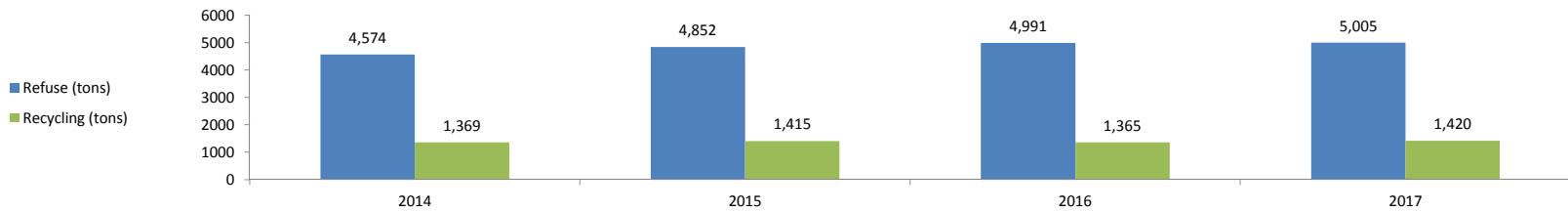
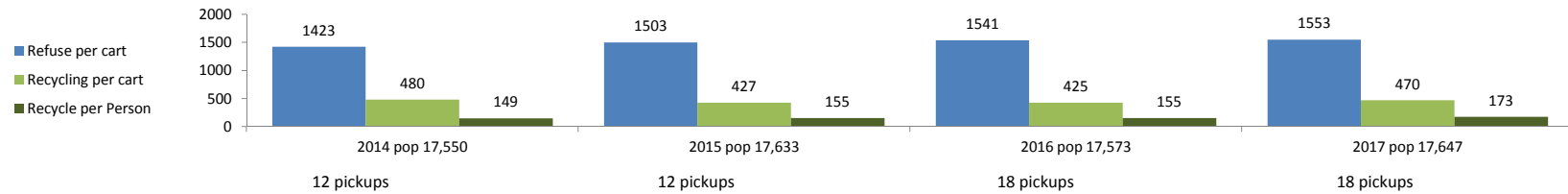
**Brief Summary of Key Points to Date:**

- Roy's three hour talk highlighted that Wisconsin has a Grid System that is divided into an East and West system with poor transmission between them, the existing coal plants (operation, plant cost, and maintenance) are the high cost drivers of the Wisconsin energy costs, providing 60% of the energy we use daily. As a regulated State, utilities are guaranteed a profit by law.
- The grid system in our State/Nation requires utilities to have visibility of the total energy generation potential in their area so they can Bid for power cost daily. The entire US power grid is vast ever changing Energy flow balance market that can be viewed on-line by Googling MISO LMP Contour Map. This system is based on reliability and is structured so the net flow of energy is zero; ideally each area of the nation generates only the power it needs locally. The Grid system is not able to handle vast power flows between most areas as it is currently "designed"
- These are the reasons why power companies wish to have solar projects under their control instead of on individual home sites in general.
- The future of the energy system is changing based on market drivers. Coal and Nuclear are high cost systems that can only exist if funded by government (citizens). Time to build new plants and transmission lines are many years long and cost prohibitive. The low price of Natural Gas is keeping the market drive for renewables down for the near future, but these will come into their own as they are quick to install and getting cheaper. The key here is for the grid market to work out how these can be planned for and inserted into the energy generation balance.
- Germany is a world leader in the renewable effort, but how they do this cannot simply be duplicated here based on the state of our grid system. There also is a difference in how the citizens wish to conserve and use/share energy to make renewable sources work!
- There currently are groups, legislators(bi-partisan), and citizens that support renewable energy projects that can be brought together to make renewable projects work, understanding that the current leadership in Madison is not supportive in general. Funding for projects will take private funding routes.
- To implement renewable projects near term, we will need to understand what works and learn lessons from projects that may have struggled as MU has noted. Luckily, the past and current leaders of WPPI have offered to provide conference attendees with guidance going forward. Roy's response to my requests are summarized here:

Roger, I would be glad to talk about solar gardens by phone and can put you in touch with someone at WPPI who knows the history and how the two pilot (solar garden) projects have worked out. The main problem I think were changes the PSC required in the proposed program, but the PSC's policy may have evolved since its order for New Richmond and River Falls. With the Point Beach solar project, WPPI will have the most solar energy in its mix of all the Wisconsin utilities.

## Refuse & Recycling Tonnage Summary

	2014	% +/-	2015	% +/-	2016	% +/-	2017	% +/-
Recyclables	1369.00 Tons	0.0095%	1414.76 Tons	3.3426%	1365.21 Tons	-3.5024%	1419.93 Tons	4.0082%
Single Stream Curbside	1173.92 tons	0.1339%	1221.99 tons	4.0948%	1244.08 tons	1.8077%	1403.55 Tons	12.8183%
Drop Site Single Stream	131.1 tons	0.6680%	148.06 tons	12.9367%	121.13 tons	-18.1886%	119.69 Tons	-1.1888%
Drop Site News/Mags					38.77 tons	0.0000%	33.59 Tons	-13.3608%
Scrap Metal/Appliances	63.98 tons	-3.4847%	44.71 tons	-30.1188%	65.64 tons	46.8128%	83.5 Tons	27.2090%
Freon Based Appliances	380 ea	109.9448%	308 ea	-18.9474%	299 ea	-2.9221%	336 ea	12.3746%
Tires	6.48 tons	24.6154%	4.06 tons	-37.3457%	5.86 tons	44.3350%	4.67 Tons	-20.3072%
# of stops	6393 carts	0.2981%	6417 carts	0.3754%	6437 carts	0.3117%	6476 carts	0.6059%
Refuse	5775.27 Tons	0.9984%	5839.91 Tons	1.1193%	6052.11 Tons	3.6336%	6061.62 Tons	0.157%
Residential	4574.22 ton	1423	4851.55 tons	6.0629%	4991.22 tons	2.8789%	5005.18 Tons	0.2797%
Commercial	1201.05 ton	-6.5134%	988.36 tons	-17.7087%	1060.89 tons	7.3384%	1065.93 Tons	0.4751%
	6429 carts	0.3590%	6455 carts	0.4044%	6480 carts	0.3873%	6446 carts	-0.5247%
Totals	<u>7144.27 Tons</u>	0.8074%	<u>7254.67 Tons</u>	1.5453%	<u>7417.32 Tons</u>	2.2420%	<u>7481.55 Tons</u>	0.8659%



**WINNEBAGO COUNTY SOLID WASTE MANAGEMENT BOARD  
SUNNYVIEW SOLID WASTE FACILITY  
2016 RECYCLING TONNAGE REPORT**

	January	February	March	April	May	June	July	August	September	October	November	December	YTD
	SS Tons	SS Tons	SS Tons	SS Tons	SS Tons	SS Tons	SS Tons	SS Tons	SS Tons	SS Tons	SS Tons	SS Tons	SS Tons
T. Algoma	47.67	51.54	42.87	45.09	52.98	48.22	48.11	59.19	47.25	57.91	51.94	50.21	602.98
T. Black Wolf	18.75	18.26	24.91	19.87	19.99	27.29	22.38	25.29	21.89	21.49	28.11	20.54	268.77
T. Clayton	42.95	27.92	30.34	42.07	34.84	36.38	44.55	32.17	43.96	32.39	34.47	47.34	449.38
T. Menasha	113.94	92.27	117.90	101.99	107.24	135.18	112.43	118.83	108.16	101.49	124.15	129.15	1362.73
T. Neenah	39.46	30.82	34.98	31.76	32.24	46.52	33.46	34.11	33.83	30.06	45.72	33.42	426.38
T. Neenah	11.49	10.09	12.17	9.44	10.29	12.57	10.24	11.63	11.24	10.29	14.04	10.46	133.95
T. Neenah	10.58	10.52	12.66	11.57	10.86	13.01	7.11	10.07	14.80	9.84	9.51	15.77	136.30
T. Omro	18.00	14.92	20.05	16.01	16.67	20.90	16.26	20.14	16.75	16.35	22.15	16.90	215.10
T. Vinland	15.19	7.54	10.15	10.07	9.57	11.06	14.14	9.41	9.43	9.08	11.55	17.92	135.11
T. Winchester	18.28	16.46	22.18	18.91	20.11	27.95	22.48	21.15	26.41	20.27	19.02	25.97	259.19
T. Winneconne	6.79	5.08	5.54	7.41	5.47	5.47	5.68	5.43	7.57	5.29	4.77	6.44	70.94
T. Wolf River	16.23	13.63	18.43	16.50	18.69	18.25	19.00	18.11	20.52	16.94	18.10	24.56	218.96
V. Winneconne	154.22	95.17	94.70	133.84	99.32	153.27	86.84	134.77	137.03	99.41	74.43	102.21	1365.21
C. Menasha	191.50	162.50	179.20	176.28	169.20	200.18	172.77	186.58	184.15	175.77	191.13	215.39	2204.65
C. Neenah	18.29	16.05	19.01	29.15	20.27	21.60	19.48	18.83	26.64	17.35	20.47	18.67	245.81
C. Omro	368.36	321.52	383.59	370.00	368.18	408.41	357.44	389.37	374.97	351.44	378.91	348.56	4420.75
C. Oshkosh	161.95	164.00	175.75	175.20	221.43	228.28	215.22	230.85	232.48	133.89	144.04	171.00	2254.09
Other SS	1253.65	1058.29	1204.43	1215.16	1217.35	1414.54	1207.59	1325.93	1317.08	1109.26	1192.51	1254.51	14770.30
<b>TOTAL TONS</b>													<b>TOTAL TONS</b>

	Population	SS lbs./person		Population	SS lbs./person		Population	SS lbs./person
T. Algoma	6,957	173.34	T. Omro	2,142	127.26	C. Menasha	17,633	154.85
T. Black Wolf	2,437	220.57	T. Vinland	1,749	245.97	C. Neenah	25,871	170.43
T. Clayton	4,053	221.75	T. Winchester	1,774	152.32	C. Omro	3,560	138.10
T. Menasha	18,665	146.02	T. Winneconne	2,382	217.62	C. Oshkosh	66,451	133.05
T. Neenah	3,492	244.20	T. Wolf River	1,197	118.53			
T. Neenah	1,423	186.26	V. Winneconne	2,410	181.71			



**TO:** Sustainability Board  
Menasha Utilities  
**FROM:** Donald Merkes, Mayor  
**DATE:** 16 January 2018  
  
**RE:** Fall Electronics Recycling Dates

---

Pubic Power Week will be celebrated October 7-13, 2018. Menasha Utilities has requested that we explore scheduling our fall electronics recycling event on either October 6<sup>th</sup> or October 13<sup>th</sup>. Unfortunately neither of those dates is available through our current vendor, Recycle That Stuff.

Available dates include:

September 15  
September 22  
October 20  
October 27

Alternatively we could explore other vendors.

## Don Merkes

---

**From:** Scott Adam <info@k9techservices.com>  
**Sent:** Wednesday, January 17, 2018 7:57 AM  
**To:** Don Merkes  
**Subject:** Re: Community Recycling Events

Don

I appreciate you reaching out to us regarding your future recycling events. At K9 Tech we work with many other companies and municipalities to coordinate their recycle events. We would be interested in working with you as well. We provide the opportunity for your residents to recycle virtually anything with us. Our main focus is electronics, or as we say "Anything with a cord, battery or engine." We also have a paper recycler we work with so we can take paper products, and media such as vhs, CD's, and records. As far as staffing the events we always fully staff our events for unloading but volunteers are always appreciated as these often get very busy. Most items we accept for free at events. The exceptions would be TV'S, CRT Monitors and Fridges/Freezers. There is no charge to the city for us to provide this service and run these events. Please let me know of any further questions you may have and I look forward to working with you. I will also have our regional sales director stop by sometime this week.

Adam Scott

Owner  
K9 Tech LLP





**TO:** Sustainability Board  
**FROM:** Donald Merkes, Mayor  
**DATE:** 16 January 2018

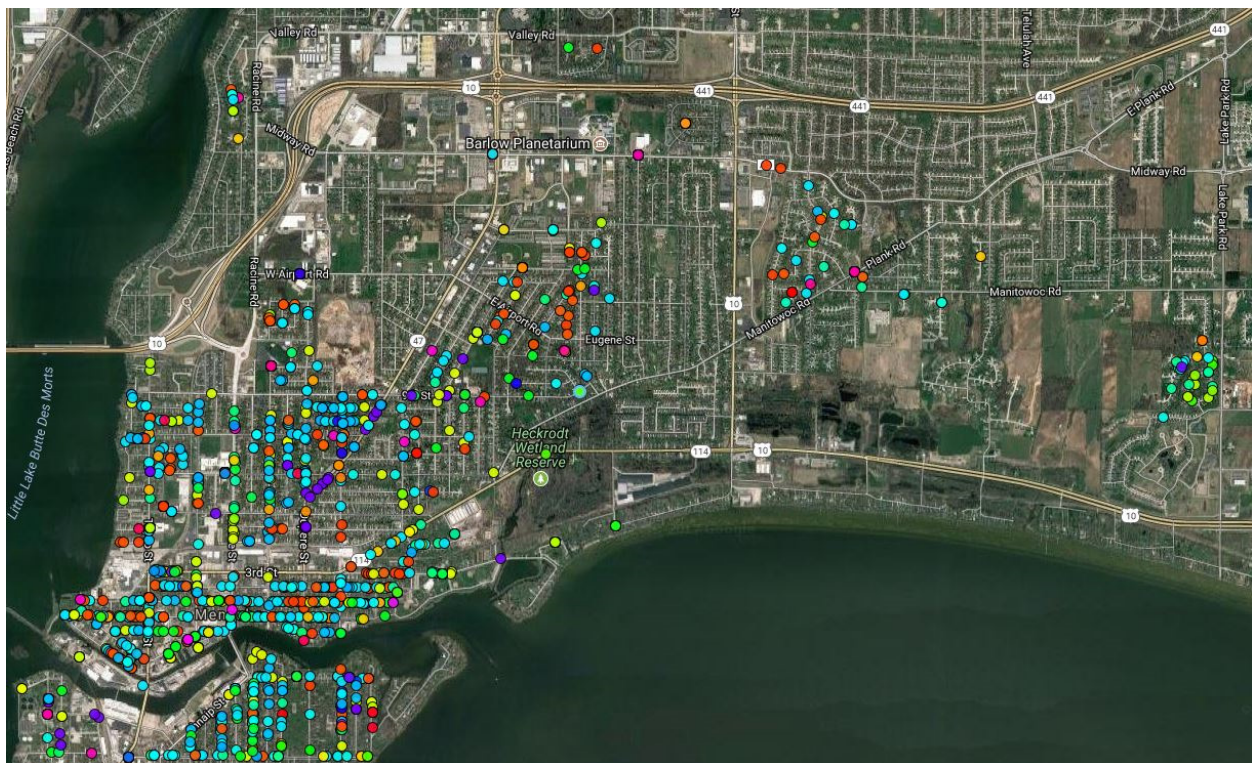
**RE:** Community Tree Map Website

---

Earlier this year the Wisconsin DNR released the Community Tree Map, an online application which shows community trees documented in tree inventories. Menasha has received several Wisconsin DNR Urban Forestry grants to document its trees. The inventories are used to better manage diversity, age, and condition including planning for EAB.

The website can be found at:  
<https://pg-cloud.com/Wisconsin/>

Menasha updated its inventory in the summer of 2017. The data from that update will be updated on the site in the near future.





# Menasha Downtown Walking/Biking Routes

12/8/2017



Text



1 inch = 500 feet  
Printed on 8" x 11"



This map is neither a legally recorded map nor a survey and is intended for reference only.



**CITY OF MENASHA**  
invites applications for the position of:

## **Farm Fresh Market Manager**

---

**SALARY:** \$12.00 - \$15.00 Hourly

**OPENING DATE:** 01/12/18

**CLOSING DATE:** 02/02/18 04:00 PM

### **SUMMARY OF JOB:**

This is a part-time seasonal position recruiting and retaining farm market vendors. This position will also work closely with City personnel to assist in planning and executing special events within the community.

### **ESSENTIAL DUTIES AND RESPONSIBILITIES:**

- Recruit & Retain market vendors
- Process vendor applications
- Plan and execute special events in conjunction with the market
- Work with Community Development staff on relations with Downtown Business coordination.
- Request street closures and park use permits(if necessary) and prepare necessary paperwork
- Work with vendors on site
- Plans and purchases advertising for the market
- Fundraise additional money and services to support the market
- Assists with maintaining and updating the Farm Fresh Market website and social media presence.
- Report for work as scheduled

---

APPLICATIONS MAY BE FILED ONLINE AT:  
<http://www.cityofmenasha-wi.gov/>

100 Main Street Ste 200  
Menasha, WI 54952  
920-967-3604

[chuber@ci.menasha.wi.us](mailto:chuber@ci.menasha.wi.us)

---

Position #2018-3  
FARM FRESH MARKET MANAGER  
CH



I Want To...

Departments

Residents

Visitors

Business  
Development

Quick Links

Enter search terms...

# Sustainability Board

SEARCH

## Sustainability Board

## Sustainability Board

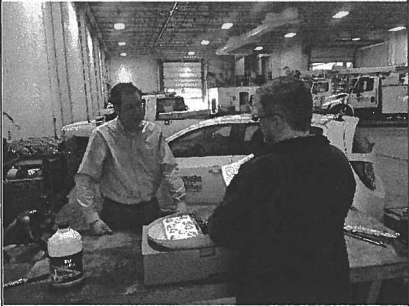


The City of Menasha is committed to sustainability measures that protect the environment, save money, and improve our quality of life here in Menasha.

In November of 2007 the Common Council had the vision to pass a [resolution](#) supporting the Eco-Municipality Concept and created a Sustainability Board to provide guidance to implementation of sustainability and energy effieciency measures. [Menasha Utilities has numerous programs](#) to assist our residents to become more energy efficient and provide access to renewable energy.

Fox Cities communities including Menasha share best practices and opportunites to improve sustainability at the [Sustainable Communities Network](#).

The Sustainability Board meets the 3rd Thursday of each month at 1:00 p.m., [Agendas and Minutes](#) are available on the city website.



		
Energy	Waste	Environment
<p>Replaced over 200 streetlights with induction lighting in 2010 reducing energy use 97,840Kwh annually</p> <p>Also in 2010 the City received a grant to replace an aging boiler/condensor in the Public Protection Facility saving 4.440 therms of natural gas and 40,840 kWh of electricity per year</p> <p>In 2012, NMFR was awarded Silver LEED certification from U.S. Green Building Council for <u>Station 36</u>. The station was designed and built using strategies aimed at achieving high performance in key areas of human and environmental health: sustainable site development, water savings, energy efficiency, material selection and indoor environmental quality.</p> <p>In 2015 the City embarked on a three year program to replace 812 street lights with LED fixtures. When complete in early 2017, the projce will save 506,500 kWh annually.</p>	<p>In 2012 the Sustainability board began sponsoring a spring and fall electronics recycling drive. Over the 10 events 146,714 lbs of electronics were diverted from landfills.</p> <p>In 2016 the City implemented increased curbside recycling pickups to 18 annually. As a result of the increased pickups recycling increased 11% per household on average to 424 lbs on average per household.</p>	<p>Menasha has been a Tree City for over 30 years recognizing the environmental, social, and increased property values <u>urban forestry programs</u> have on a community. Menasha has planted over 1,000 new trees over the last 8 years.</p> <p>In 2016 the City embarked on updating its stormwater planning to reduce suspended solids and phosphorous. The planning document offers options to improve stormwater quality in the coming decades.</p>

## Sustainability Board

---

Ed Kassel  
Roger Kanitz  
Jeanine Knapp  
Linda Stoll (Chair)  
Kathy Thunes

## DEPARTMENTS

Administrative Services  
Assessor/Finance  
Building Inspection  
City Attorney  
City Clerk  
Community Development  
Library

Health  
Human Resources  
Menasha Utilities  
Neenah-Menasha Fire Rescue  
Parks and Recreation  
Police  
Public Works  
Senior Center

## QUICK LINKS

Budget  
Calendar  
City Officials  
City Directory  
Elections  
Employment Opportunities

Map  
Municipal Code  
Newsletter  
Open Book & Board of Review  
Recycling & Refuse Collection  
Surplus Items for Sale



Menasha City Center  
City Hall  
100 Main Street, Suite 200  
Menasha, WI 54952



920-967-3600

