

It is expected that a Quorum of the Personnel Committee, Board of Public Works, Plan Commission and Administration Committee will be attending this meeting: (although it is not expected that any official action of any of those bodies will be taken)

**CITY OF MENASHA
SUSTAINABILITY BOARD
Common Council Chambers
140 Main Street, Menasha**

**Tuesday, May 15, 2012
6:30 PM**

**AGENDA
AMENDED**

- A. CALL TO ORDER
- B. ROLL CALL/EXCUSED ABSENCES
- C. PUBLIC COMMENTS ON ANY MATTER OF CONCERN TO THE SUSTAINABILITY BOARD
(five (5) minute time limit for each person)
- D. MINUTES TO APPROVE
 - 1. [April 24, 2012](#)
- E. COMMUNICATIONS
- F. REPORTS
 - 1. ECOS video clip projects (Roger Kanitz)
 - 2. [Recycling event results](#)
- G. ACTION ITEMS
 - 1. [City of Menasha facilities energy usage](#)
- H. DISCUSSION
 - 1. Waste Management (including recycling) – Kathy Thunes & Linda Stoll
 - 2. Sustainable Communities Network Update – Kathy Thunes, Roger Kanitz, Linda Stoll
 - 3. Sustainability Board Annual Report
- I. ADJOURNMENT

"Menasha is committed to its diverse population. Our Non-English speaking population and those with disabilities are invited to contact the Menasha City Clerk at 967-3603 24-hours in advance of the meeting for the City to arrange special accommodations."

**CITY OF MENASHA
SUSTAINABILITY BOARD
Common Council Chambers
140 Main Street, Menasha
Tuesday, April 24, 2012
Minutes**

A. CALL TO ORDER

Meeting called to order by Chairperson Linda Stoll at 6:30 p.m.

B. ROLL CALL/EXCUSED ABSENCES

Present: Linda Stoll, Paul Van de Sand, Chris Bohne, Kathy Thunes, Roger Kanitz, Ed Kassel

Also Present: Mayor Merkes

C. PUBLIC COMMENTS ON ANY MATTER OF CONCERN TO THE SUSTAINABILITY BOARD

(five (5) minute time limit for each person)

No one spoke.

D. MINUTES TO APPROVE

1. March 20, 2012

Moved by Roger Kanitz, seconded by Kathy Thunes to approve minutes of March 20, 2012.

Motion carried

E. COMMUNICATIONS

F. REPORTS

G. ACTION ITEMS

1. Earth Day recycling event

There will be four volunteers from the sustainability board, four volunteers from Menasha Utilities, and the mayor attending the event. Recycle That Stuff will also provide several additional people to staff the location. The event was advertised in last month's utility bills for all Menasha Utilities customers, newspaper, and earth week flyer.

H. DISCUSSION

1. City of Menasha facilities energy usage

Paul presented a chart showing baseline energy usage for nine major city buildings. The city fared well in relation to baseline energy usage (both gas and electric) compared to national averages for similar buildings. Baseline usage is for the 2009-10 time period and is pre-lighting upgrades. It was suggested that the former Airport Road fire station 36 be added to the list so that it can be compared to Manitowoc Road fire station 36 usage. Chris will provide information from comparable buildings in Appleton; contact should be made with Neenah and Town of Menasha to see if they have energy usage statistics for similar buildings. Paul will provide actual usage statistics for last 12 months to compare with baselines. A recommendation of energy usage goals for future will be made from this information and implementation plan developed.

2. Earth Week 2012

ECOS website listing Earth Week activities has been completed and linked with the tourism websites and listed in newspaper articles. 1100 brochures have been printed and distributed. Arbor Day celebration in Menasha is April 27th, 120 trees and shrubs will be planted along the Friendship Trail between Plank Road & Third St with help from a donation and in kind labor from SCA Tissue.

3. Waste Management & Recycling

Board members and city staff plan to meet in June. Discussion regarding citizen's knowledge of cost savings to the city to recycle rather than landfill and educational newsletter opportunities to better inform residents of the benefits of recycling to their pocketbook. ECWRPC has offered to do a survey of residents regarding land filling and recycling knowledge and preferences.

4. Sustainable Communities Network

Kathy, Roger, and Linda attended the last quarterly meeting. The main topic of discussion was the new website for ECOS which was made possible through a donation by SCA Tissue. The website will allow communities to share programs, actions, and ideas relating to sustainability in their community and learn from other communities. There should be an administrator from our community to post these items. Next meeting scheduled for July 12th.

5. Sustainability Board Annual Report

Linda will start a template for the board to populate with accomplishments and in progress items for review at next meeting. It was suggested that we use a format similar to the Town of Menasha and Neenah for easy comparison. Discussion of additional ways to better communicate accomplishments and discussions including: facebook, Fox Cities Viewpoint, city newsletter. Discussion if additional skills and board members would be valuable in reaching annual goals.

6. Neenah Menasha Trolley Concept

Roger and city staff will set a meeting with Neenah to discuss this concept and potential users.

I. ADJOURNMENT

Moved by Chris Bohne and seconded by Kathy Thunes to adjourn at 8:03 p.m.

Motion carried.

Respectfully submitted by Mayor Merkes



RecycleThatStuff.com

Resource Solutions Corp.

CERTIFICATE OF RECYCLING

•All Computers & Electronics Will Be Recycled For Their Metal, Glass, & Plastic•

**Received From: Menasha Utilities
321 Milwaukee Street
Menasha, WI 54952**

Materials Recycled: 3450 lbs of TV's – 2665 lbs of CRT Monitors – 4493 lbs of Small Electronics – 2781 lbs of CPU's – 2001 lbs of Freon Items – 875 lbs of Microwaves – 50 lbs of Stoves - 2215 lbs of Printers

Total Weight Recycled: 18,530 lbs

This is to certify that the above items received by **Recycle That Stuff** in **Appleton, WI** will be recycled in accordance with all applicable Federal, State and local Regulations and **will not be landfilled**, or otherwise improperly disposed of.

<April 28th 2012



**E-Cycle Wisconsin
Registered Collector
& Recycler**

ISO 14001:2004 Certified #R102908

Wis. DNR License 12843

121 N. Linwood Ave. – Appleton, WI 54914



RecycleThatStuff.com

Resource Solutions Corp.

CERTIFICATE OF RECYCLING

•All Computers & Electronics Will Be Recycled For Their Metal, Glass, & Plastic•

Received From: Town of Menasha
Municipal Center – Vehicle Storage Bldg.
2000 Municipal Dr.
Menasha, WI 54956

Materials Recycled: 4045 lbs of TVs – 4063 lbs of Small Electronics – 2185 lbs of CRT Monitors – 1478 lbs of Freon Items – 2150 lbs of CPU's – 2400 lbs of Printers – 40 lbs of Appliances – 578 4ft Lamps – 2 U-shaped Lamps – 9 Broken Lamps

Total Weight Recycled: 16,950 lbs

This is to certify that the above items received by **Recycle That Stuff** in **Appleton, WI** will be recycled in accordance with all applicable Federal, State and local Regulations and **will not be landfilled**, or otherwise improperly disposed of.

April 28th 2012

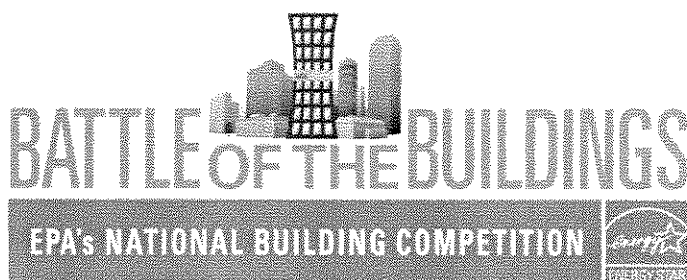


E-Cycle Wisconsin
Registered Collector
& Recycler

ISO 14001:2004 Certified #R102908

Wis. DNR License 12843

121 N. Linwood Ave. – Appleton, WI 54914



CALL FOR APPLICATIONS!

Open from
April 30 – May 23

energystar.gov/BattleOfTheBuildings

Back by popular demand, the U.S. Environmental Protection Agency is hosting a national competition among commercial buildings to save energy and protect the climate. Competitors will work off the waste through improvements in energy efficiency with help from EPA's ENERGY STAR® program. The building that sheds the most energy waste will be recognized as the winner.

New for 2012, EPA is making the battle bigger and better than ever by offering recognition to any building that improves efficiency by 20% or more and top water savers! Hurry before it's too late—apply by May 23!

WHAT'S THIS ABOUT A BATTLE?

EPA's ENERGY STAR National Building Competition pits buildings from across the nation against each other in a competition to see who can trim their energy waste the most. Competitors submit their 2011 energy use information to EPA during the application period and then work to improve efficiency during 2012. The competitor that reduces its energy use the most on a percentage basis will be recognized by EPA as the winner.

New for 2012! EPA will offer recognition to any building that improves its energy efficiency by 20% or more, as well as top water savers.

WHO CAN COMPETE?

An organization can nominate one or more of the commercial buildings they own or manage. Any type of commercial building is eligible to compete, as long as the building has been benchmarked in Portfolio Manager and submits complete energy use information for the 2011 calendar year (1/1/2011–12/31/2011) by May 23. See the rules of the game on the reverse side for more details.

HOW DOES IT WORK?

Energy use intensity, or EUI, represents the amount of energy consumed per square foot by a building annually. When an organization benchmarks a building's energy use in Portfolio Manager, the tool automatically calculates the building's EUI, among other metrics, and normalizes it to account for local weather conditions.

The competition will compare a building's EUI between two 12-month period ending dates: 12/31/2011 and 12/31/2012. The competitor that demonstrates the greatest percent-based reduction in weather-normalized EUI across these two periods will be recognized as the winner in spring 2013.

WHAT WILL I GET?

Participants will have the opportunity to participate in monthly networking sessions, use free competition creative materials and logos, and be included on the competition website. EPA will promote the competition through traditional and social media.

HOW DO I NOMINATE MY BUILDING?

Applying is easier than ever. Visit energystar.gov/BattleOfTheBuildings for step-by-step instructions on how to nominate one, several, or all of the buildings in your portfolio using a Portfolio Manager report.

KEY DATES

Call for applications: April 30, 2012
"How to Apply" webinar: May 2 and May 15, 2012
Application deadline: May 23, 2012
Official launch: July 2012
Midpoint: September 2012
Winner announcement: April 2013

DID YOU KNOW?

- Almost a third of all buildings that participated in the 2011 competition posted double-digit savings! At the end of the 2011 competition, 75 of 245 competitors had reduced their annual energy use by 10% or more. And the top 10 all saved 30% or more!
- On average, 30% of the energy used in commercial buildings is wasted.
- Commercial buildings account for 18% of the nation's energy use and nearly 18% of our greenhouse gas emissions.
- These same buildings spend more than \$100 billion annually on energy costs.



LEARN MORE AT
energystar.gov

ENERGY STAR®, a U.S. Environmental Protection Agency program, helps us all save money and protect our environment through energy efficient products and practices. For more information, visit www.energystar.gov.

RULES OF THE 2012 GAME

- Any organization may nominate one or more commercial buildings of any type to compete. To highlight the energy savings potential of parking garages and similar facilities, EPA encourages parking garages to enter the 2012 competition. To spur competition, these facilities will compete against each other in their own category. While not eligible to be the overall winner of the competition, EPA will highlight the winner of this category.
- The nominated building must have complete energy usage data for calendar year 2011 (1/1/2011 – 12/31/2011) entered into Portfolio Manager to compete.
- All applicants who submit complete energy use data through the custom report in Portfolio Manager by May 23, 2012 will be invited to participate and will be included in the launch of the 2012 National Building Competition.
- To participate in the midpoint update, competitors must submit a custom report upon direction from EPA to reflect energy use data through June 30, 2012. The report will be available in early July and due by August 31, 2012.
- To participate in the winner announcement, competitors must submit a third and final custom report upon direction from EPA to reflect energy use data through December 31, 2012. The report will be available in early January 2013 and due by February 28, 2013.
- Through Portfolio Manager, EPA will determine which competitor shows the greatest adjusted percent energy reduction achieved across these two periods, and this building will be declared the winner.
- The presumptive winner and top finisher in each building category, as well buildings that want to be recognized for reducing energy use by 20 percent or more and top water savers, will be required to have their energy and/or water use data for the baseline and comparative periods (calendar years 2011 and 2012) validated by a licensed professional engineer or registered architect to receive recognition.

ABOUT ENERGY STAR

ENERGY STAR is an EPA program helping businesses and individuals fight climate change through superior energy efficiency. For over a decade, EPA has helped thousands of organizations set energy performance goals, measure and track progress, and earn recognition for their efforts.

ABOUT PORTFOLIO MANAGER

EPA's free online ENERGY STAR Portfolio Manager tool allows organizations to measure and track the energy use of buildings, set investment priorities, and verify improvements. Eligible building types can receive an ENERGY STAR energy performance score on a scale of 1-100, which indicates its energy performance relative to similar buildings nationwide. Buildings with a score of 75 or higher may be eligible for the ENERGY STAR, EPA's symbol of top energy performance.

2011 NATIONAL BUILDING COMPETITION RECAP

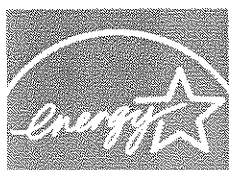
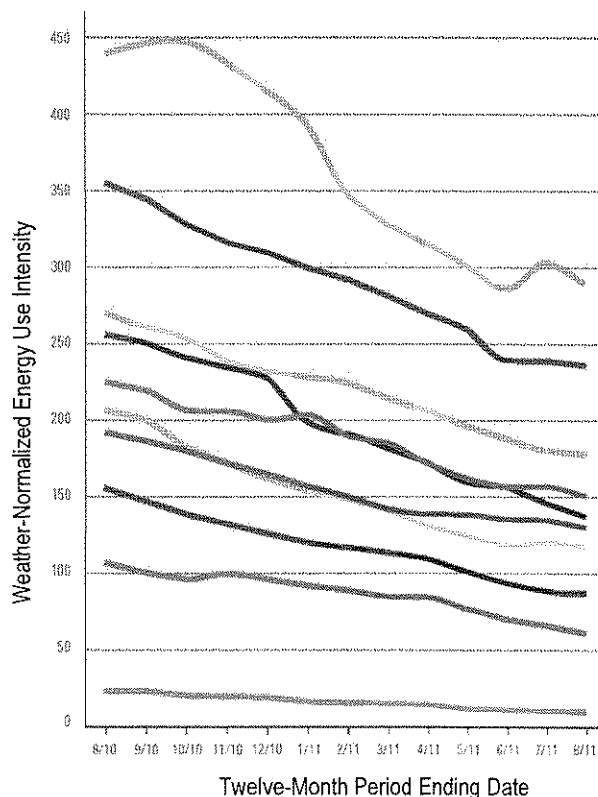
In 2011, EPA hosted its second "Biggest Loser"-style competition among commercial buildings. Teams from 245 buildings across the country competed in a head-to-head battle to save energy and reduce greenhouse gas emissions that contribute to climate change.



As the battle drew to a close, the competitors had saved a combined total of more than 240 million kBtus of energy and \$5.2 million on annual utility bills. They prevented greenhouse gas emissions equal to the electricity used by more than 3,600 homes a year. And 37% of eligible competitors had earned the ENERGY STAR during the competition, EPA's symbol of superior energy performance.

The winner was University of Central Florida's Parking Garage C, which reduced energy use by more than 60% and saved almost \$35,000. Their efforts shine a light on the savings potential for parking garages everywhere!

Below is a graph of the competition's top 10 overall finishers. To find out who they were and see results of all 245 competitors, download the wrap-up report from www.energystar.gov/BattleOfTheBuildings.



LEARN MORE AT
energystar.gov

ENERGY STAR®, a U.S. Environmental Protection Agency program, helps us all save money and protect our environment through energy efficient products and practices. For more information, visit www.energystar.gov.

I listened to talks by Bayfield, Madison, Beloit and the new Riverside COTS program in Appleton. Program was put on by the Sustain Board of Oshkosh, with Kim Biedermann acted as program moderator.

I will be receiving talk and contact information at the ECOS email site, however this appears to be a great discussion topic for the next sustain board gathering in July. The Beloit speaker offered to provide us with a sustain tour of the City if we wanted.

Madison: Karl van Lith said they have a City Office of Sustainability. Web-site is full of projects and opportunities for reference if we choose to check it out. They are using the building energy use inventory that we are developing. Other points of interest to us currently were that food waste is very dense and has a greater cost impact on tipping fees than other items. They have developed a master transportation plan, bring arts design and community sustainability vision (water saving) in the planning for parks, and up-dates to the building codes supporting solar and other renewable energy options, and neighborhood planning guidelines for 25% more walking, reducing gas usage by 25%, 25% more water retention, and 25% water use reduction .

Bayfield: Mayor Larry MacDonald spoke for community of 490. Vision statement is "Where Water Meets the Soul". Sustainability there was demanded by the citizens early on. They have received awards for being the most sustainable small city in the USA. His main point was that we need to Market the Successes of Sustainability to the community to develop the support to enable additional sustainable projects to happen! He further said you need to speak about sustainability in terms that the audience understands; some think in dollars, others health, and etc... They offer citizen grants for sustainable projects in the order of \$200 for private and \$500 for business project support. The folks that apply typically spend much more than this to complete the projects, but it gets them started. They do kids projects like growing flowers and planting them in gardens. They bought a NEV for the city on a reduced gas usage basis to great economic success. Gave each citizen a sustainability "Clean It – Green It" bag (cost of \$24 per household), published an Earth Care booklet written by local citizens, and have encouraged neighbors to share electric mowers and the like. Businesses in town work to get the "Travel Green Logo" and this has increased tourism to the area. He said things take time, it is important to act like an ECO community and good things will happen.

Beloit: Beth A Jacobsen heads the sustainability effort there as the assistant to the City Manager. She changed the name of the city board to the Green Team cause it was more fun sounding! They have developed a one page report document to give the city council a short up-date on ANY change that occurs that has a sustainable impact to the community; this is part of their market effort. They have gone paperless in the city, giving computers to the council and saving \$26,000 in printing a related cost each year. They have also reduced/replaced all of the small appliances in city offices to reduce energy costs. She commented that the public works departments of our communities are the center of sustainability leadership. Many cast saving ideas come from them. They

have gone to a pay as you throw project charging for excess trash disposal, forcing recycling. They shift and sort street sweepings, reducing land fill dumping costs by 108 tons so far! They have partnered with the local Beloit Box Board to take their recycled paper. They use geo-melt like we do, and actually manufacture it in the city (sell it to others). They have developed a reflective thermal plastic striping system to reduce need for painting from yearly to every ten years. They are now working on a project (Grant supported) with a local Truck firm to go to Hydrogen for all city equipment; justification being reduced fuel charges. Beth was totally open to a visit by members of our community board to share ideas; suggest inclusion of public works leaders in that group!

Appleton: Oren Jacobson explained that Cots Riverview program is challenging the existing city ordinances and working to work with civic and city leaders to redefine them with a new sustainable focus. One of the neat things they are working on is the weed ordinance that limits (200) square feet of lawn area on any property to plantings of over 8" in height; this goes to the city council for approval this Wednesday. They are working on a water retention plan that will be an example for the community; they are working to put numbers on the benefits of things like rain barrels (example is (4) rain barrels on each of the 28,000 homes Appleton could eliminate the need for the a major part of the city's water retention pond needs now in the budget). They have also identified that the density of food waste is a major contributor to the tipping fee costs of trash the city dumps at \$38 per ton. They want to be a reference for sustainable activities and how these integrate with the human needs for work, food, housing, walking space and environmental responsibility.

My comments: It again seems like there is a wealth of information that we as a city could obtain if we were to reach out to other communities and their public works departments. Visiting the websites, going to the cities of interest, implementing some of the ideas to save money, marketing the results and then reinvesting a portion of the savings in personnel to develop other sustainable (money saving ideas) might be a plan that we should consider.



Step-by-Step Instructions for Applying to the 2012 ENERGY STAR® National Building Competition

Thank you for your interest in applying for the 2012 ENERGY STAR National Building Competition! Follow the step-by-step instructions below to generate a data release report in Portfolio Manager and register your building(s) for the competition.

Answers to Frequently Asked Questions are available for download at www.energystar.gov/BattleOfTheBuildings. For technical support, please contact buildings@energystar.gov.

Step 1: Access the Data Release Report

To nominate a building(s) to compete in the *energy use category only* of the competition, click this link to start reporting your data:

<https://www.energystar.gov/istar/pmpam/index.cfm?fuseaction=login.loginExtRpt&reportuuid=ADEA8B4A-188B-36F7-214C50A92F60F93A&permtyp=REQ>

To nominate a building(s) to compete in *both the energy and water categories*, click this link to start reporting your data: <https://www.energystar.gov/istar/pmpam/index.cfm?fuseaction=login.loginExtRpt&reportuuid=E5EA2512-1EC9-2E06-C17AEB33EBF45587&permtyp=REQ>

Step 2: Log in to Portfolio Manager

You will automatically be taken to Portfolio Manager's login page. If you already have an account, log in to the account that includes the data for the building(s) you wish to nominate.

If this is your first time using Portfolio Manager, you will need to set up an account and benchmark the building(s) you wish to nominate. There are several helpful resources to help you get started. The [Benchmarking Starter Kit](#) contains useful information for collecting the necessary data, registering an account, and inputting your information. You can also attend [Live and Self-guided Training](#) for help with benchmarking. Lastly, learn more about the tool by reading an [Overview of Portfolio Manager](#).

Step 3: Review Instructions

Instructions for sharing your data will automatically pop up when you log in to Portfolio Manager. These instructions are the same as those included in this document. Click "OK" to close the window. Note that you can go back and review them anytime by clicking "View Instructions" in the top right corner of the window.

Step 4 – Review and Complete Benchmarking Data

After you click "OK," you will see the report screen. *Prior to completing the report, please review all information for the building(s) you wish to nominate to verify it was entered accurately and completely.* The report is automatically saved as a template option, so you can navigate away from the report screen and come back when you are ready to submit your data.

STOP
Check that your data is accurate and complete before submitting your report.

2012 EPA National Building Competition - Energy Reporting December 2011

Report Template: 2012 EPA National Building Competition

296 Matching Facilities 296 Rows Returned

Reporting Period: Single Period (one period)

Facilities & Groups

| Facility Owner | Facility Type | City | State |
|----------------|---------------|---------------|-------|
| 100 inc. | Manufacturing | San Diego | Cal |
| 104 | Office | Los Angeles | Cal |
| 114 | Retail | Tallahassee | Fla |
| 116 | Retail | Phoenix | Ariz |
| 124 | Retail | San Jose | Cal |
| 134 | Office | San Francisco | Cal |

When you first open the report, it will automatically populate with ALL buildings that have data for the 12-month period of performance (calendar year 2011). Note that this list may not include buildings you wish to submit (if they don't have complete data) and/or may include others that you do not want to enter into the competition.

The report will collect the following fields for each nominated building. The fields in bold are **required**. If the report generates an "N/A" for any of the bolded fields, the building will NOT be eligible to compete.

- | | |
|---|--|
| <ul style="list-style-type: none"> • Building ID • Facility Name • Facility Type • Facility Owner • Service and Product Provider (if provided) • Notes (Other Space Type and Building Manager)** • City • State • Zip code • Year Built • Total Floor Space (sq. ft.) | <ul style="list-style-type: none"> • Current 1-100 Rating (if applicable) • Years Labeled • Eligibility for the ENERGY STAR • Current Source Energy Intensity • Current Weather Normalized Source Energy Intensity • Current Site Energy Intensity • Current Weather Normalized Site EUI • Current Total GHG Emissions • Indoor Water Use (kGal) • Outdoor Water Use (kGal) • Total Indoor and Outdoor Water Use (kGal) (if competing in the water use category) |
|---|--|

****If your space type is Other**, please include the type of building you are nominating by editing the Notes section to include "For competition: Other--<insert Building Type>". To do so, navigate to the Facility Summary page, and click on "Edit" in the General Information section in the upper right corner of the page.

****If you wish to include the name of a Building Manager**, please edit the Notes section to include "For competition: Building Manager--<insert Building Manager Name>".

If you make any changes to your data, you must wait **24 hours** before submitting your report to EPA. Data used in Portfolio Manager Reports is updated nightly; therefore, the report will not reflect any changes you make to your account until the next day. For example, if you add a facility or update energy data in your account today, you will have to wait until tomorrow to include it in the report.

If you have navigated away from the report page to revise your data, you can return to it by navigating to the "My Portfolio" page and clicking "Generate Reports and Graphs" on the right side of the page.

PORTFOLIO MANAGER

Home > My Portfolio

| Group Averages | |
|---|--|
| Baseline Ratings: 66 Facilities Included: 205 | Current Rating: 80 Facilities Included: 205 |
| Change from Baseline: Group Adjusted Percent Energy Use (%): -17.5% Facilities Included: 228 | |
| Averages are weighted by Total Floor Space More about Baselines More about Grouping from Baseline Adjusted Energy Use | |

Reporting and Analysis

New Generate Reports and Graphs
[Compare Energy Performance Report](#)
[Federal Sustainability Report](#)
[Request Campus Report](#)

From the drop-down list of report templates, choose the template to nominate your building(s) in the energy use only or energy and water use categories of the 2012 National Building Competition.

PORTFOLIO MANAGER

Home > My Portfolio > Generate a Report

Report Template

- Select a Report Template
- Select a Report Template
- Baseline Comparison
- Benchmark Performance
- Current Facility Status
- Emissions Performance
- Energy Performance
- Utility Cost Report
- Water Performance Report
- Water/Wastewater Energy Performance
- Custom Reports

Portfolio Manager Reports

Generate reports and graphs using data from your Portfolio Manager account

[Click Here to Generate Reports](#)

Step 5 – Complete the Report with Your Building Data

Select the building(s) in your Portfolio Manager account that you wish to enter into the competition by clicking on the hyperlink under the “Facilities and Groups” heading on the left hand side of the page and checking next to each building you’d like to add to the report. You may nominate as many buildings in your portfolio as you want. When your selection is complete, click “Save.”

PORTFOLIO MANAGER

2012 EPA National Building Competition - Energy Reporting December 2011

Select Facilities or Groups

Select the facilities you would like to include in this report

Choose from your entire Portfolio or from your Groups:

209 Matching Facilities - 228 Rows

Reporting Period

Single Period (one period)

Consolidate date periods

Range (all periods within date)

Facilities & Groups

Facility Name - City - State - Zip Code - OK

| Facility Name | City | State | Zip Code |
|-----------------|-----------|----------|----------|
| Sample Facility | Arlington | Virginia | 22201 |
| Sample Facility | Arlington | Virginia | 22201 |
| Sample Facility | Arlington | Virginia | 22201 |
| Sample Facility | Arlington | Virginia | 22201 |
| Sample Facility | Arlington | Virginia | 22201 |
| Sample Facility | Arlington | Virginia | 22201 |
| Sample Facility | Arlington | Virginia | 22201 |
| Sample Facility | Arlington | Virginia | 22201 |
| Sample Facility | Arlington | Virginia | 22201 |
| Sample Facility | Arlington | Virginia | 22201 |

Selected Facilities:

- Sample Facility
- Sample Facility
- Sample Facility

Cancel Save

The buildings you have selected to enter to the competition that have complete energy data for the 2011 calendar year will now appear in the table in the middle of the page. If you see “N/A” in any of the required fields (noted above), review and fix your data in Portfolio Manager before submitting your report. Only reports with complete data for the required fields will be included in the competition. You may resubmit your report if you notice a field was “N/A” after you submitted it. When you resubmit a report, it will only update the data that you changed. All other information will remain the same as you initially submitted it. Portfolio Manager will not remove or erase data that was previously submitted.

Step 6 – Submit Report

Once you are satisfied that each of the buildings you would like to enter in the competition has been properly benchmarked and selected for the National Building Competition Report, click the “Release Data” button in the upper right corner of the window.

Step 7 – Provide Contact Information

You will be directed to a page where you will be asked to enter contact information so that EPA can send you confirmation of your data submission, as well as a copy of the report. **Please include the email address of the primary point of contact for the competition in this space.** This is how EPA will communicate with you for the duration of the competition.

When contact information is complete, click “Release.”

Note: By submitting your report to EPA, you acknowledge that you are willing to share information publicly about your energy use intensity and carbon emissions, including percentage change and related savings. If you do not wish to share this information publicly, do not submit the data release report.

Step 8 – Confirmation

The next page asks if you would like a confirmation email sent to you or another party along with a copy of the report you submitted. Please enter the email address of the primary point of contact and anyone else you would like to receive a receipt or a copy of the application to keep on file.

Congratulations! An email will be sent to all competing organizations in June with welcome materials and an invitation to join a webinar to prepare for competition launch!

Overview of Sustainability Expo in Oshkosh, 5/12/12

rak

I listened to talks by Bayfield, Madison, Beloit and the new Riverside COTS program in Appleton. Program was put on by the Sustain Board of Oshkosh, with Kim Biedermann acted as program moderator.

I will be receiving talk and contact information at the ECOS email site, however this appears to be a great discussion topic for the next sustain board gathering in July. The Beloit speaker offered to provide us with a sustain tour of the City if we wanted.

Madison: Karl van Lith said they have a City Office of Sustainability. Web-site is full of projects and opportunities for reference if we choose to check it out. They are using the building energy use inventory that we are developing. Other points of interest to us currently were that food waste is very dense and has a greater cost impact on tipping fees than other items. They have developed a master transportation plan, bring arts design and community sustainability vision (water saving) in the planning for parks, and up-dates to the building codes supporting solar and other renewable energy options, and neighborhood planning guidelines for 25% more walking, reducing gas usage by 25%, 25% more water retention, and 25% water use reduction .

Bayfield: Mayor Larry MacDonald spoke for community of 490. Vision statement is "Where Water Meets the Soul". Sustainability there was demanded by the citizens early on. They have received awards for being the most sustainable small city in the USA. His main point was that we need to Market the Successes of Sustainability to the community to develop the support to enable additional sustainable projects to happen! He further said you need to speak about sustainability in terms that the audience understands; some think in dollars, others health, and etc... They offer citizen grants for sustainable projects in the order of \$200 for private and \$500 for business project support. The folks that apply typically spend much more than this to complete the projects, but it gets them started. They do kids projects like growing flowers and planting them in gardens. They bought a NEV for the city on a reduced gas usage basis to great economic success. Gave each citizen a sustainability "Clean It – Green It" bag (cost of \$24 per household), published an Earth Care booklet written by local citizens, and have encouraged neighbors to share electric mowers and the like. Businesses in town work to get the "Travel Green Logo" and this has increased tourism to the area. He said things take time, it is important to act like an ECO community and good things will happen.

Beloit: Beth A Jacobsen heads the sustainability effort there as the assistant to the City Manager. She changed the name of the city board to the Green Team cause it was more fun sounding! They have developed a one page report document to give the city council a short up-date on ANY change that occurs that has a sustainable impact to the community; this is part of their market effort. They have gone paperless in the city, giving computers to the council and saving \$26,000 in printing a related cost each year. They have also reduced/replaced all of the small appliances in city offices to reduce energy costs. She commented that the public works departments of our communities are the center of sustainability leadership. Many cost saving ideas come from them. They

have gone to a pay as you throw project charging for excess trash disposal, forcing recycling. They shift and sort street sweepings, reducing land fill dumping costs by 108 tons so far! They have partnered with the local Beloit Box Board to take their recycled paper. They use geo-melt like we do, and actually manufacture it in the city (sell it to others). They have developed a reflective thermal plastic striping system to reduce need for painting from yearly to every ten years. They are now working on a project (Grant supported) with a local Truck firm to go to Hydrogen for all city equipment; justification being reduced fuel charges. Beth was totally open to a visit by members of our community board to share ideas; suggest inclusion of public works leaders in that group!

Appleton: Oren Jacobson explained that Cots Riverview program is challenging the existing city ordinances and working to work with civic and city leaders to redefine them with a new sustainable focus. One of the neat things they are working on is the weed ordinance that limits (200) square feet of lawn area on any property to plantings of over 8" in height; this goes to the city council for approval this Wednesday. They are working on a water retention plan that will be an example for the community; they are working to put numbers on the benefits of things like rain barrels (example is (4) rain barrels on each of the 28,000 homes Appleton could eliminate the need for the a major part of the city's water retention pond needs now in the budget). They have also identified that the density of food waste is a major contributor to the tipping fee costs of trash the city dumps at \$38 per ton. They want to be a reference for sustainable activities and how these integrate with the human needs for work, food, housing, walking space and environmental responsibility.

My comments: It again seems like there is a wealth of information that we as a city could obtain if we were to reach out to other communities and their public works departments. Visiting the websites, going to the cities of interest, implementing some of the ideas to save money, marketing the results and then reinvesting a portion of the savings in personnel to develop other sustainable (money saving ideas) might be a plan that we should consider.