

It is expected that a Quorum of the Personnel Committee, Board of Public Works, Plan Commission and Administration Committee will be attending this meeting: (although it is not expected that any official action of any of those bodies will be taken)

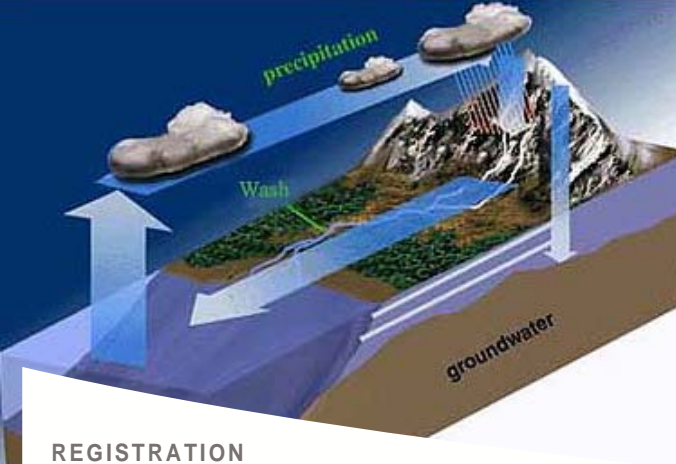
**CITY OF MENASHA
SUSTAINABILITY BOARD
Common Council Chambers
140 Main Street, Menasha**

**Tuesday, July 17, 2012
6:30 PM**

AGENDA

- A. CALL TO ORDER
- B. ROLL CALL/EXCUSED ABSENCES
- C. PUBLIC COMMENTS ON ANY MATTER OF CONCERN TO THE SUSTAINABILITY BOARD
(five (5) minute time limit for each person)
- D. MINUTES TO APPROVE
 - 1. [June 19, 2012](#)
- E. COMMUNICATIONS
 - 1. [East Central Wisconsin Regional Planning Commission Groundwater Workshop brochure](#)
 - 2. [Sustainable Fox Valley event information: The Big Green – sustainable music festival](#)
- F. REPORTS
- G. ACTION ITEMS
 - 1. [City of Menasha recycling event, October 2012](#)
- H. DISCUSSION
 - 1. Waste Management (including recycling) – Kathy Thunes
 - 2. [Complete Streets - Linda Stoll](#)
- I. ADJOURNMENT

"Menasha is committed to its diverse population. Our Non-English speaking population and those with disabilities are invited to contact the Menasha City Clerk at 967-3603 24-hours in advance of the meeting for the City to arrange special accommodations."



PRESRT STD
U.S. POSTAGE PAID
Menasha, WI 54952
Permit No. 94

REGISTRATION

Due to space limitations, pre-registration is required!

There is no cost to participants. To pre-register, simply call Vicky Johnson at (920)-751-4770, or send name, address, phone # and e-mail address to vjohnson@eastcentralrpc.org.

Register now to save your seat for this important event!



East Central Wisconsin Regional Planning Commission
400 Ahnaip Street, Suite 100
Menasha, WI 54952-3311



Groundwater Workshop

- * aquifers
- * recharge
- * water table
- * flow paths
- * hydrology

**Know what's
under your
feet!**

**Friday, July 27, 2012
8:30 A.M.—12:00 P.M.**

**Crystal Falls Banquet Facility
1500 Handschke Drive
New London, Wisconsin**



East Central Wisconsin Regional Planning Commission

Groundwater Awareness...

HOW WILL YOUR COMMUNITY HELP TO MANAGE THE REGIONAL GROUNDWATER RESOURCE?

Hosted by the East Central Wisconsin
Regional Planning Commission



AGENDA

8:00 A.M. REGISTRATION AND COFFEE

8:30 A.M. WELCOME AND OPENING REMARKS

Mr. Eric Fowle, AICP - Executive Director
East Central Wisconsin RPC

8:40 A.M. SESSION 1: *A Groundwater Recharge Model for Calumet, Outagamie and Winnebago Counties*

Dr. David Hart, Hydrogeologist
Wisconsin Geologic & Natural History Survey,
Madison, WI

9:15 A.M. SESSION 2: *Implementing Groundwater Recharge at the Community Level*

Mr. Mike Rupiper, Environmental Engineer
Capital Area Regional Planning Commission,
Madison, WI

10:00 A.M. BREAK

10:15 A.M. SESSION 3: *Managing Groundwater in Karst Landscapes*

Mr. Bill Hafs, Director
Brown County Land Conservation Department,
Green Bay, WI

11:05 A.M. SESSION 4: *Groundwater—Managing for the Future*

Ms. Mary Ellen Vollbrecht, Section Chief
Division of Water / Drinking Water and
Groundwater, Wis. Dept. of Natural Resources

11:45 A.M. CLOSING REMARKS

Mr. Todd Verboomen, Associate Planner
East Central Wisconsin RPC

12:00 P.M. ADJOURN

LEARNING OBJECTIVES

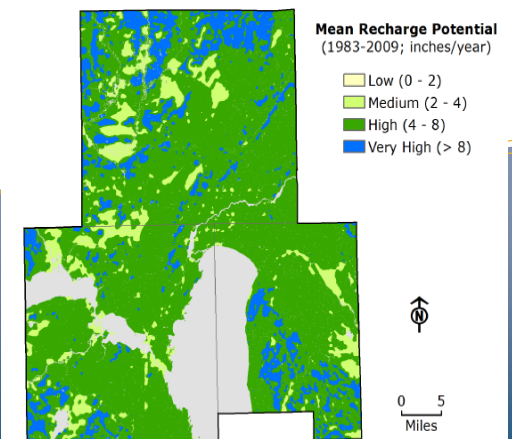
- ◆ Improve knowledge of groundwater recharge concepts and interactions with surface waters;
- ◆ Promote effective land use and land management practices to protect groundwater resources;
- ◆ Provide updated information on Statewide issues and initiatives related to groundwater
- ◆ Connect and engage local government representatives with groundwater practitioners;
- ◆ Identify, relate, and strategize barriers that preclude groundwater protection in local planning efforts.

GROUNDWATER RECHARGE MODELING PROJECT OVERVIEW



As originally identified in its 2008 Regional Comprehensive Plan, the Commission sought to provide better 'groundwater recharge area' data and mapping information to its member counties and communities so that better decision-making on land use matters can be made. Using local levy dollars, East Central leveraged additional funding to complete a modeling/mapping initiative that would cover 7 Counties: Calumet, Menominee, Shawano, Outagamie, Waushara, Waupaca, and Winnebago.

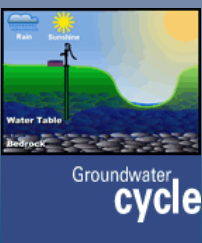
East Central contracted with the Wisconsin Geologic & Natural History Survey to prepare the study in two phases. The first phase - Calumet, Outagamie, Winnebago Counties - was completed in the Spring of 2012 and the remaining four counties will be complete near the end of 2012. Attend to learn more!



QUALITY, SAMPLE, DETECT, MONITOR, TEST, SURVEY

Identify Risks Site Assessments Systems Evaluation Improve

A FREE on-site informational workshop for
elected officials, plan commissioners, plan-
ners, and municipal employees.





THE BIG GREEN™

sustainable music festival

June 6, 2012

FOR IMMEDIATE RELEASE

THE BIG GREEN™ LAUNCHES IN THE FOX VALLEY

Music Festival Aims to GREEN the Fox Valley

Excitement is brewing in anticipation of the Fox Valley's first annual Sustainable Music Festival – **The Big Green™** – premiering Saturday, August 18 from Noon - 9:30 p.m. at Sunset Park in Kimberly, WI.

The festival features live music, local food and marketplace, handcrafted beers, and exhibits.

Event Chair, Sarah Lauer, noted, "This near zero waste public festival raises awareness of sustainability, encourages community involvement, supports diversity, and enhances our creative culture."

Proceeds from the event benefit Sustainable Fox Valley, a non-profit 501c(3), to further its goals for the Fox Valley Region of Wisconsin:

- Resilient and self-reliant local economies
- Opportunities for all to thrive in their community
- A healthy natural environment

Volunteer, sponsorship, vendor, and exhibit opportunities are still available. Please contact Autumn Hill, autumn@autumnhillcreative.com or 920-788-1111.

Tickets and event information are available at <http://www.thebiggreenfest.com>.

Early bird admission is only \$8 until June 30. After June 30, admission is \$10. Children age 13 and under are free. Admission includes entertainment, the local marketplace, and exhibits.

Rock this onto your summer event calendar, and we'll see you there!

[facebook.com/TheBigGreenFest](https://www.facebook.com/TheBigGreenFest)

<http://www.sustainfv.org>

Enough For All Forever.





The Fox Valley's original
sustainable music festival

COMMUNITY ENGAGEMENT OPPORTUNITIES

Excitement is building for the FIRST ANNUAL SUSTAINABLE MUSIC FESTIVAL presented by Sustainable Fox Valley, a 501c3 non-profit. THE BIG GREEN will take Fox Valley center stage on Saturday, August 18, 2012 from 12:00-9:30 p.m. at Sunset Park in Kimberly.

This unique event is designed to promote community engagement, enhance the creative culture, and raise awareness of sustainability.

We welcome you as a sponsor of The Big Green. If you are an entrepreneur, innovator, vendor, or business owner this is your opportunity to market your business and showcase your products and services to a targeted audience. Your support can be customized to fit your needs.

Sponsorship levels are outlined on the following pages. If you have an idea for a creative way to support The Big Green, please let us know. We are proud to include your organization in the Fox Valley's original Sustainable Music Festival.

Visit thebiggreenfest.com for event details.

Some opportunities are limited, so return the attached form today to secure your sponsorship.

Email the form to:

autumn@autumnhillcreative.com

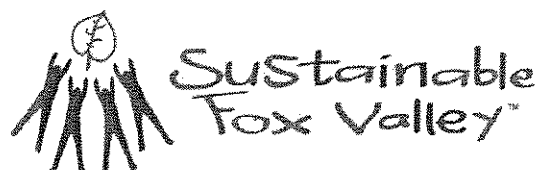
Or mail to:

Sustainable Fox Valley - The Big Green
Attn: Autumn Hill
P.O. Box 2692
Appleton, WI 54912-2692

Call with questions:

920-788-1111

Presented by:



Funds raised benefit the programs and mission of Sustainable Fox Valley, a non-profit 501c3 working toward the sustainability of our communities.

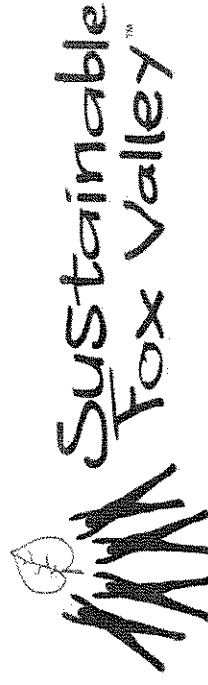
Learn more and donate at sustainfv.org.

THE BIG GREEN

sustainable music festival

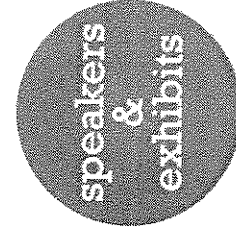
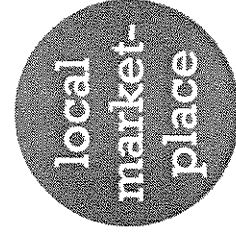
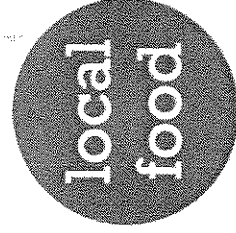
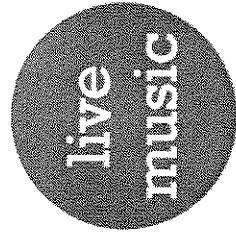
Fox Cities - August 18, 2012

Presented by Sustainable Fox Valley



The Big Green music festival encourages sustainability, community involvement, diversity, and cultural exploration. We will provide ways for guests to minimize the event's impact and our goal is near-zero waste.

The festival will feature:



To volunteer, sponsor, or attend this exciting event please contact Sarah at sarahl@sustainfv.org. Visit our website at sustainfv.org or find us on Facebook: facebook.com/sustainfv

Design and printing donated by autumnhillcreative.com. Printed with non-toxic ink on Wisconsin-made paper that contains 100% post-consumer recycled content.

-----Original Message-----

From: Lora Boeger [mailto:lora@recyclethatstuff.com]

Sent: Thursday, June 07, 2012 10:19 AM

To: Roger Kanitz; Lisa Miotke; Dick Sturm; Donald Merkes

Subject: October 13th - Menasha Utilities

Good Morning Everyone,

I am emailing today to follow up on earlier discussions this year, regarding hosting a possible 2nd event over at Menasha Utilities later this fall. Eariler this year the Town of Menasha had scheduled to host their event with us on October 13th 2012. We would be capable of working with the City of Menasha on the 13th as well, if that sounds like a good plan. I know after the 1st one that everything seemed to go rather smoothly, and the reply was quite wonderful to the days event.

Please let me know if that date will work. If not I do have other date we can look in to.

Thank you all again!

Lora Boeger -President

RecycleThatStuff.com

121 N. Linwood Ave.

Appleton, WI 54914

Cell: (920) 450-5010

Office: (920) 955-3760

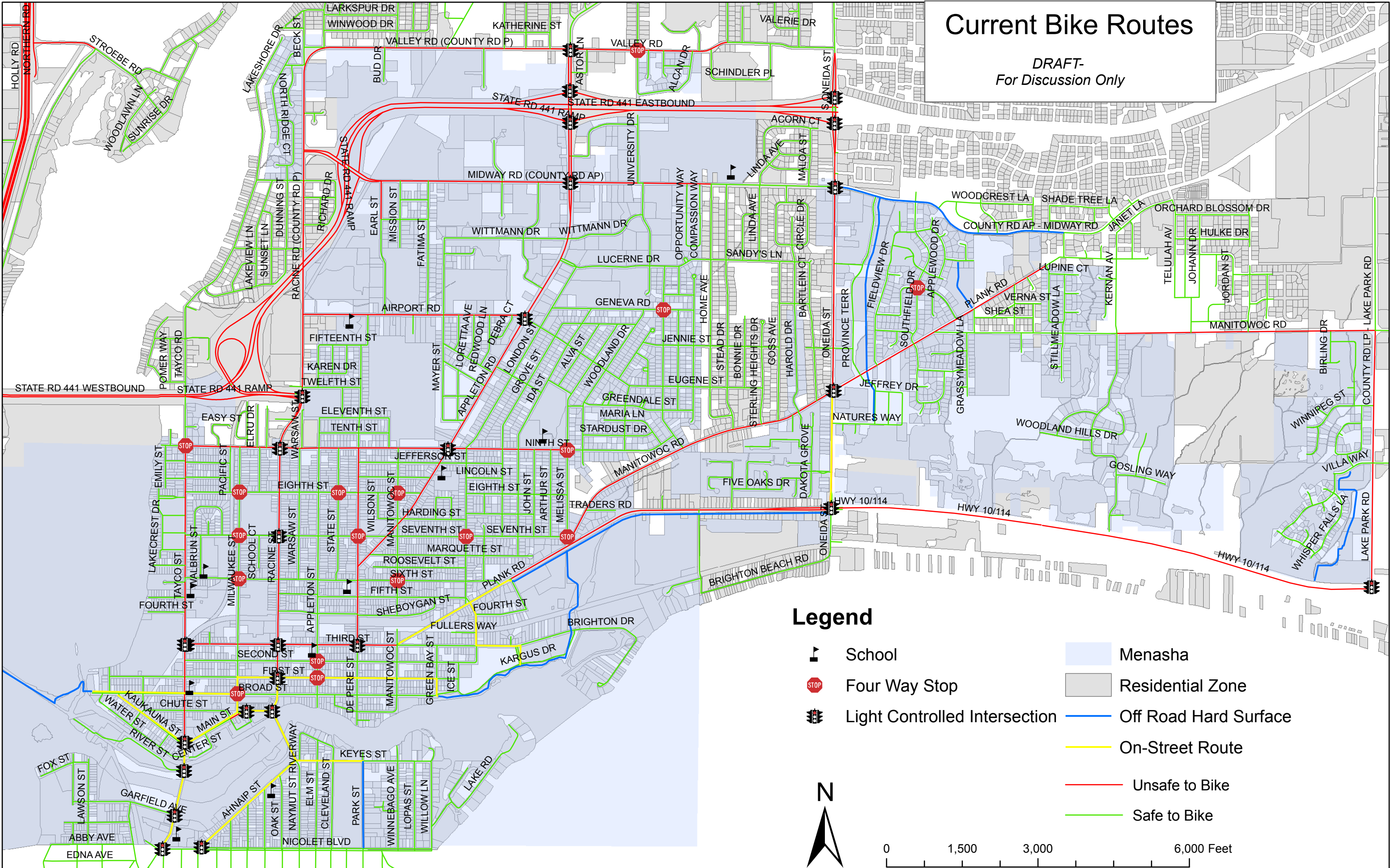
No virus found in this incoming message.

Checked by AVG - www.avg.com

Version: 8.5.455 / Virus Database: 271.1.1/5068 - Release Date: 06/13/12 18:34:00

Current Bike Routes

DRAFT-
For Discussion Only



Walkable Streets

DRAFT-
For Discussion Only

