

Menasha aldermen occasionally attend meetings of this body. It is possible that a quorum of Common Council, Board of Public Works, Administration Committee, Personnel Committee may be attending this meeting. (No official action of any of those bodies will be taken).

**CITY OF MENASHA
PARKS AND RECREATION BOARD
Conference Room, 1st Floor City Hall
140 Main Street, Menasha**

November 8, 2010

6:00 PM

AGENDA

- A. CALL TO ORDER
- B. ROLL CALL/EXCUSED ABSENCES
- C. MINUTES TO APPROVE
 - 1. [Minutes of the October 11, 2010 Park Board Meeting](#)
- D. PUBLIC COMMENT ON ANY MATTER RELATED TO CITY PARKS AND RECREATION
 - Five (5) minute time limit for each person
- E. REPORT OF DEPARTMENT HEADS/STAFF/YOUTH LIAISON OR CONSULTANTS
 - 1. Park, Project and Vandalism Report – PS Maas
 - 2. Director's Report
 - A. Gilbert site, Regional Park, Trail Grant, Recreation Programs
- F. DISCUSSION
 - 1. [Introduction of Greg Karch and Kids Fishing Program](#)
- G. ACTION ITEMS
 - 1. [Accept the Executive Summary of the Emerald Ash Borer Management Plan and Tree Inventory – Kim Miller](#)
- H. PUBLIC COMMENT ON ANY MATTER LISTED ON THE AGENDA
 - Five (5) minute time limit for each person
- I. ADJOURNMENT

CITY OF MENASHA
PARKS AND RECREATION BOARD
Council Chambers, City Hall – 140 Main Street, Menasha
October 11, 2010
DRAFT MINUTES

A. CALL TO ORDER

Meeting called to order by Chr. D. Sturm at 6:01 PM.

B. ROLL CALL/EXCUSED ABSENCES

MEMBERS PRESENT: Chr. Dick Sturm, Ald. Mark Langdon, Lisa Hopwood, Nancy Barker, Ron Suttner and Steve Krueger (welcome given to Steve)

MEMBERS EXCUSED: Sue Pawlowski

OTHERS PRESENT: PRD Tungate, PS Maas and Harbormaster Diane Schabach

C. MINTUES TO APPROVE

1. **Minutes of the September 13, 2010 Park Board Meeting**

Moved by R. Suttner, seconded by L. Hopwood to approve the minutes of the September 13, 2010 Park Board meeting. Motion carried 6-0.

D. PUBLIC COMMENT ON ANY MATTER LISTED ON THE AGENDA

Five (5) minute limit for each person.

1. No one spoke.

E. REPORT OF DEPARTMENT HEADS/STAFF/ YOUTH LIAISON OR CONSULTANTS

1. **Park, Pool and Vandalism Report – PS Maas**

PS Maas reported on: trail berm near Heckrodt Wetland Reserve has been shaped and seeded with no mow grass, Marina pier supplies have been ordered – came in under budget, decking will be a darker gray color, fall tree planting taking place, Memorial Building landscape was completed, good news at the pool – no water line leaks were found – instead expansion joints will be re-sealed next spring, Heckrodt Wetland Reserve buildings will have roofs repaired, city park shelters will be checked. Insurance to cover the repairs. Minor graffiti found at Clovis and Barker Farm parks.

2. **Winz Park Staff Meeting Update – PRD Tungate, PS Maas, Chr. D. Sturm**

Menasha Utilities and city park officials met at Winz park to review repairs of the clearwell exterior walls, gutters and the recreation surface on top. Another meeting with a concrete contractor is set for Tuesday, October 12. Cracking and deterioration of concrete, both along the gutters on the east and west walls and on the top surface appear to be causing the unsightly deterioration on the east and west side walls. Menasha Utilities officials would like to see the gutter and top surface cracking somehow addressed before undertaking repair to the sidewalls. Staff will keep the Board apprised on this matter as more information is obtained.

3. **Joint Meeting of City of Neenah and Town of Menasha Park Commissions and the City of Menasha's Park Board – PRD Tungate**

Park Board/Commissions from the communities of Neenah, Menasha and the Town of Menasha will meet on Wednesday, December 8 at 6:00 p.m. at the Whiting Boat House in Neenah. The general purpose of the meeting is to get to know one another and to get a feel for each community's challenges, issues, etc. The Board was excited about the opportunity and perhaps the possibility of service efficiencies that could be explored by the three departments.

F. DISCUSSION ITEMS

1. **Review of 2010 Marina Season – Harbormaster Diane Schabach**

Harbormaster Schabach discussed her 2010 season. Overall, the Marina had a good year, which could have better if some last season winds and high water flows hadn't occurred. Harbormaster Schabach also explained the history of the Marina. She is looking forward to continuing her work

at the Marina.

2. **Ways of Recognizing Contributions of Previous Board Members Tom Konetzke and George Korth**

Several ways of recognizing recently replaced long time Board members Tom Konetzke and George Korth. PRD Tungate shared an idea he received from Ald. Wisneski suggesting naming of the scoreboard or building at Koslo Park after Tom Konetzke and the Jefferson Park boat landing after George Korth. Other ideas were discussed. In the end, the Board asked PRD Tungate to bring back a draft of a resolution honoring each person separately. The Board liked an idea suggested by Ald. Langdon to attach the resolution to a plaque with a park related emblem and present it at the December meeting. PRD Tungate will pursue more information on this request at the November meeting.

3. **Review of Open Meetings Law Pertaining to Board Member Comments**

PRD Tungate presented information about Board member comments as it relates to the state's Open Meetings law. PRD Tungate spoke with CA Captain prior to the meeting.

G. ACTION ITEMS

1. **Recommend Raising the Marina Annual Slip Rental Rate from \$37.00 to \$37.50 per foot for 2011**

Moved by L. Hopwood, seconded by R. Suttner to raise the seasonal slip fee at the Marina from \$37.00 to \$37.50 per foot for 2011. Harbormaster Schabach needs the new rate to be able to send slip renewals out this fall. Motion carried 6-0.

2. **Elect New Vice-Chair to Replace Tom Konetzke**

Chr. D. Sturm called for nominations for a new vice-chair for the Board. Moved by Ald. M. Langdon to nominate R. Suttner as vice-chair, seconded by S. Krueger. No other nominations were made. Unanimous ballot cast for R. Suttner. Motion carried 6-0

H. PUBLIC COMMENT ON ANY MATTER LISTED ON THE AGENDA

Five (5) minute time limit for each person.

1. No one spoke.

I. ADJOURNMENT

Moved by Ald. M. Langdon, seconded by L. Hopwood to adjourn at 7:30 PM. Motion carried 6-0.

Captain Greg Karch
1976 East Murdock Avenue
Oshkosh, WI 54901
Cell 920-213-0373

Facts:

- Licensed United States Coast Guard Captain
- Wisconsin Certified DNR Angler Educator
- Held over 20 Fishing Clinics for Youth, Families and Adults
- Able to adapt Fishing Clinic for audience (Youth, Adult or families)
- Great Presenter
- Member of National Professional Anglers Association
- Fished the Winnebago System for 20+ years
- Actually live right on Lake Winnebago
- Featured in Milwaukee paper – Article is in packet
- Featured in Wisconsin Sportsman Magazine
- Have a volunteer base from Thrivent Financial
- Fished when I was a youth so I know my audience
- Open water and Ice Fish
- Fished Professionally

Past Youth Fishing Clinics:

October / 2010 – Welcome Home Event – Held for soldiers that were overseas this past year and their families. In the morning, held a youth fishing seminar called Fishing Basics. After the seminar, I worked with youths on casting with an open and closed faced combo. In the afternoon a Fishing Contest was held for the families where I supplied all the equipment. Over 60 fish were caught where the soldiers and youths went home with great prizes from my sponsors.

July / 2010 – Omro Library – Held a youth fishing seminar called Fishing Basics. After the seminar, I worked with youths on casting with an open and closed faced combo.

July / 2010 – Winneconne Library – Held a youth fishing seminar called Fishing Basics. After the seminar, a Fishing Contest was held for the youth where I supplied all the equipment. Many fish were caught by the youth and they went home with great prizes from my sponsors.

June / 2010 – Oshkosh Library – Held a youth fishing seminar called Fishing Basics. After the seminar, I worked with youths on casting with an open and closed faced combo

June / 2010 – Powder Horn Presentation – Held a seminar for Boy Scouts, Cub Scouts and Rangers leaders on the aspects of fishing. During the seminar I used the guidelines from the Boy Scouts, Cub Scouts and Rangers so they may lead their youth so they could obtain the Fishing merit badge. I prepared a two hour seminar which had presentations and hands on labs.

May /2010 – Walleye Weekend Family Fishing Tournament – During the tournament meet with over one hundred families where I did Fish Identification with my flash cards. Many families enjoyed this as they learned more about the fish they catch.

August / 2009 – Best Friends Family Fair – During the fair worked with youths one-on-one on casting. Used Backyard Bass which allowed youths to catch fish on try land.

June /2009 – UW Oshkosh – Attended classes presented by the DNR where I became a DNR Certified Angler Educator

May /2009 – Walleye Weekend Family Fishing Tournament – During the tournament met with families and talked to them about fishing and handed out hooks to all the youths.

August / 2008 – Best Friends Family Fair – During the fair worked with youths one-on-one on casting. Used Backyard Bass which allowed youths to catch fish on try land.

May / 2008 - Fishing is Fun – Sponsored by Thrivent Financial - Lead this clinic where over one hundred youths attended the fishing clinic from the Fox Valley mentoring agencies (Best Friends of Neenah Menasha, PALS and Big Brothers and Big Sisters) Activities included many different fishing seminars along with a fishing tournament.

August / 2007 – Best Friends Family Fair – During the fair worked with youths one-on-one on casting. Used Backyard Bass which allowed youths to catch fish on try land.

May / 2007 - Fishing is Fun – Sponsored by Thrivent Financial - Lead this clinic where over one hundred youths attended the fishing clinic from the Fox Valley mentoring agencies (Best Friends of Neenah Menasha, PALS and Big Brothers and Big Sisters) Activities included many different fishing seminars along with a fishing tournament.

July / 2006 – Evergreen Campsites – Held a Youth Fishing Clinic where we took youths fishing in boats. During the event there was a fishing tournament and all types of fishing seminars. The DNR attended where they discussed the Fyke nets and brought in the different fish from the lake. Over 150 youths attended this event.

References:

Jean Thyssen
Assistant Library Director
Winneconne Public Library
Thyssen@winneconnelibrary.org
(920) 582-7091

Nancy Jackisch
Children's and Family Outreach Services
Oshkosh Public Library
Jackisch@oshkoshpubliclibrary.org
(920) 236-5208

Theo Knigge
Library Director
Carter Memorial Library (Omro)
knigge@omrolibrary.org
920-685-7016

Mike Wittlieff
2740 Elizabeth St
Janesville, WI 53548
608-752-4060 home
608-449-3028 cell

Summary of the City of Menasha's Emerald Ash Borer (EAB) Readiness Plan Draft

Prepared by: Kimberly A. Miller

I. Background

The Emerald Ash Borer (EAB) is an invasive species from Asia that is thought to have arrived in the United States in wood packing material. The pest was first detected in Michigan in 2002 and has since spread to Canada and 14 other states including Wisconsin. Having no natural predators or controls in North America, the pest kills all species of North American ash trees and has killed millions of trees to date as it moves across the country putting it on par with Dutch elm disease and chestnut blight.

In August of 2008, it was announced that EAB had been found in the Village of Newburg, Ozaukee County, WI. Since then, EAB has been found in Brown, Crawford, Milwaukee, and Vernon Counties causing a total of eleven counties to be quarantined statewide. Although quarantines are in place, EAB still has the potential to move long distances by hitchhiking in infested firewood, logs, and nursery stock making planning imperative for communities.

With the support of the City Council, the City of Menasha Parks and Recreation Department took steps to plan for EAB's impending arrival in the City. In 2010, they applied for and received a WDNR Urban Forestry Grant for \$7,000 to conduct a tree inventory and write an EAB plan. The tree inventory and EAB plan will assist and guide the City in managing EAB and its urban forest. Some elements of the plan consists of the history of EAB in North America and how to identify both the EAB and an ash tree; tree inventory results; preparation, detection, and control management options; wood utilization options; outreach and education efforts; and costs/budgets.

II. Assessment of Menasha's Public Trees

During the summer of 2010 a tree inventory was completed of the City's street, park, and other publically owned trees. With this information in hand regarding the number of trees and their condition the City can more effectively plan for EAB and evaluate the different management options available.

The results of the inventory showed that there are 4401 publically owned trees, over 700 or 17% of them are ash trees (Table 1.0 and Figure 1.0). However, upon review of the data, EAB and the number of ash are not the only issue of concern to the City. The City also has 123 dead or critical trees (26 of them ash) that could potentially fail putting the community at risk. There are also an additional 283 trees in poor condition that will need to be monitored over time (Table 2.0).

Table 1: Total number and percentage of publically owned trees by general tree type.

Tree Type	Total	%
Ash	733	16.7
Elm	186	4.2
Honeylocust	231	5.2
Linden	172	3.9
Maple	1446	32.9
Oak	168	3.8
Evergreen	338	7.7
Ornamental	743	16.9
Other	384	8.7
Grand Total	4401	100.0

Figure 1: Percentage of publically owned trees by general tree type.

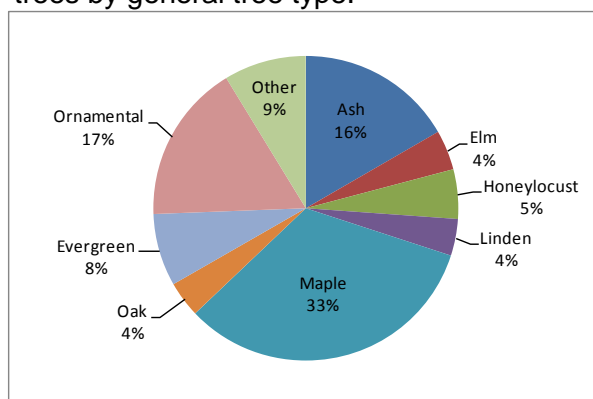


Table 2: Total number and percentage of publically owned trees by condition class and district.

Condition	District								Cemeteries	Total	%
	1	2	3	4	5	6	7	8			
Good	941	423	224	147	214	454	193	244	84	2924	66.4
Fair	314	172	110	116	66	153	39	59	42	1071	24.3
Poor	75	29	32	29	9	63	10	21	15	283	6.4
Critical	33	11	9	14	4	13	1	5	8	98	2.2
Dead	7	3	1	1	0	0	1	10	1	25	0.6
Grand Total	1370	638	376	307	293	683	244	339	150	4401	100.0

III. Private Trees and Community Outreach

When considering the overall health of the community's forest, another concern is that the majority of a community's trees are typically located on private property, not public. Although the exact number of ash trees in citizen's yards is not known, a general rule of thumb is 10 private ash trees for every 1 ash street tree. Therefore, with the potential of thousands of trees being infected with EAB and removed within a short amount of time, the City will be faced with the question of what to do with the wood debris.

In addition, with the potential number of ash trees on private property it will be important to have effective communication and outreach with citizens to help them understand their options for managing ash trees in their own yards and to increase awareness, understanding, and support for the City's EAB Readiness Plan. One way in which this will be done is through an Open House that will be held during the second week of December 2010.

IV. EAB Control Management and Wood Utilization/Disposal Options

The City will need to manage its urban forest both before and after EAB is detected. Control management options vary and there is no one all-inclusive method. However, management options generally fall into one of two categories, preemptive and reactive management efforts in which there are pros and cons to each (Table 3.0). Preventative efforts entail education, preemptive removals, and chemical controls. Reactive efforts delay actions taken until EAB has arrived, and usually entail removing a tree once it is dead or infested with EAB. It could also mean treating a tree with insecticides before it declines in health.

Table 3: Preemptive vs. Reactive Removals

Preemptive Removals: Removing ash trees not infested with EAB	
<p>Pros:</p> <ul style="list-style-type: none"> • Opportunity to spread removal costs over longer time frame. • Reduces problem of dealing with many dead and/or hazardous ash trees at one time. • Opportunity to start the replanting/recovery process right away. • Greater flexibility in organizing removal and routine work schedules. • Ability to utilize ash wood for products or use it as a local source of firewood. 	<p>Cons:</p> <ul style="list-style-type: none"> • Immediate impacts to tree canopy and aesthetics. • Removing healthy ash may create negative feeling in the community. • Does not take into account that research may find an effective control of EAB.

Table 3: Continued

Reactive Removals: Removing ash trees which are either infested with EAB or dead	
Pros: <ul style="list-style-type: none"> • Delayed impacts to tree canopy and aesthetics. • No negative public perception or removing healthy trees. • Delayed budgetary impacts until EAB hits. • Further EAB research may offer effective control, minimizing need for removals. 	Cons: <ul style="list-style-type: none"> • If no action is taken to control EAB infestations, studies have shown that the rate of spread will be much faster. • Budget impacts can be severe once EAB is in community. • Replanting funds may not be available due to extreme removal costs. • Cost of removals is usually higher for dead trees.

When dealing with preemptive removals the City can utilize current wood utilization methods. However, when EAB is found locally, the county(s) will be placed under quarantine. A quarantine puts in place regulations on certain wood products to prevent further spread of EAB through human assisted means. Having a quarantine in place, along with the potential of a significant amount of wood debris coming from citizens, the City will need to evaluate and change current wood utilization and storage methods.

V. Recommended Strategies and Associated Costs

After careful review of the numbers and budget, a preemptive management effort strategy is recommended for the City of Menasha that will not only manage for EAB but help improve the overall well being of the City's urban forest. Due to the number of dead and critical trees in the city, the strategy will remove and replace all trees rated as dead or critical over a period of two to four years. All trees rated as poor will be monitored yearly for deteriorating conditions and will be progressively removed and replaced over the next ten years. In addition, when EAB is found in closer proximity to the City the use of chemical treatments should be considered as a way to spread removal costs over a longer length of time and to preserve the economic, ecological, and environmental benefits of the trees until replacement trees fill in the urban canopy. This method will be considered as an option for maintaining the tree canopy in some of the parks due to the density of ash trees. However, chemical treatments are not considered a long-term solution.

The EAB Management Plan will not only help the City mitigate damage to its urban forest caused by a pending EAB infestation; it will also help lessen the impact to its budget by spreading tree removal, disposal, and planting costs over time. However, it is important to understand that the overall costs of EAB can be significant (Table 4 & 5). And not knowing exactly when EAB will arrive, it is hard to know how many years the costs can be spread over.

Table 4: Costs of removing all trees in dead, critical or poor condition.

Condition	# of trees	Removals		Replacements Costs
		Costs 1*	Costs 2**	
Dead	24	\$936	\$4,104	\$1,374
Critical	98	\$50,760	\$60,252	\$5,611
Poor	283	\$115,992	\$148,944	\$16,202
Grand Total	405	\$167,688	\$213,300	\$23,186

* Contractor costs, assuming staff can conduct removals on all 0-6" trees and all 6-18" trees not under powerlines.

** Contractor costs to remove all trees.

Table 5: Costs of removing all ash trees

Condition	# of trees	Removals		Replacements
		Costs 1*	Costs 2**	Costs
Dead	6	\$0	\$1,284	\$344
Critical	20	\$7,920	\$10,608	\$1,145
Poor	57	\$22,968	\$28,548	\$3,263
Fair	195	\$56,688	\$83,628	\$11,164
Good	455	\$81,648	\$153,636	\$26,049
Grand Total	733	\$169,224	\$277,704	\$41,964

* Contractor costs, assuming staff can conduct removals on all 0-6" trees and all 6-18" trees not under powerlines.

** Contractor costs to remove all trees.

VI. Conclusion

Although EAB has not been found locally, it is inevitable that it will work its way to the City of Menasha. The potential loss of trees, along with their aesthetic, ecological and environmental benefits, makes EAB the biggest threat to Menasha's urban forest since Dutch Elm Disease. The effects can be detrimental and overwhelming to a community, both financially and physically. However, with proper planning effects on budgets and to the urban forest can be minimized. The recommendations outlined in the City's EAB Readiness Plan will help ensure that the City of Menasha has an effective response to EAB while planning for a healthy sustainable urban forest resource.

VII. Appendices

Map 1.0: Ash Trees Located in District 1

Map 2.0: Ash Trees Located in District 2

Map 3.0: Ash Trees Located in District 3

Map 4.0: Ash Trees Located in District 4

Map 5.0: Ash Trees Located in District 5

Map 6.0: Ash Trees Located in District 6

Map 7.0: Ash Trees Located in District 7

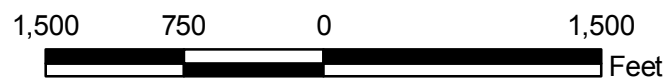
Map 8.0: Ash Trees Located in District 8

Map 9.0: Ash Trees Located in Resthaven & Oak Hill Cemeteries



Ash Trees Located in District 1

August 2010



- Ash Trees (96)
- ▬ District Boundary



Map 1.0



Ash Trees Located in District 2

August 2010





-  Ash Trees (116)
-  District Boundary


Map 2.0



Ash Trees Located in District 3

August 2010

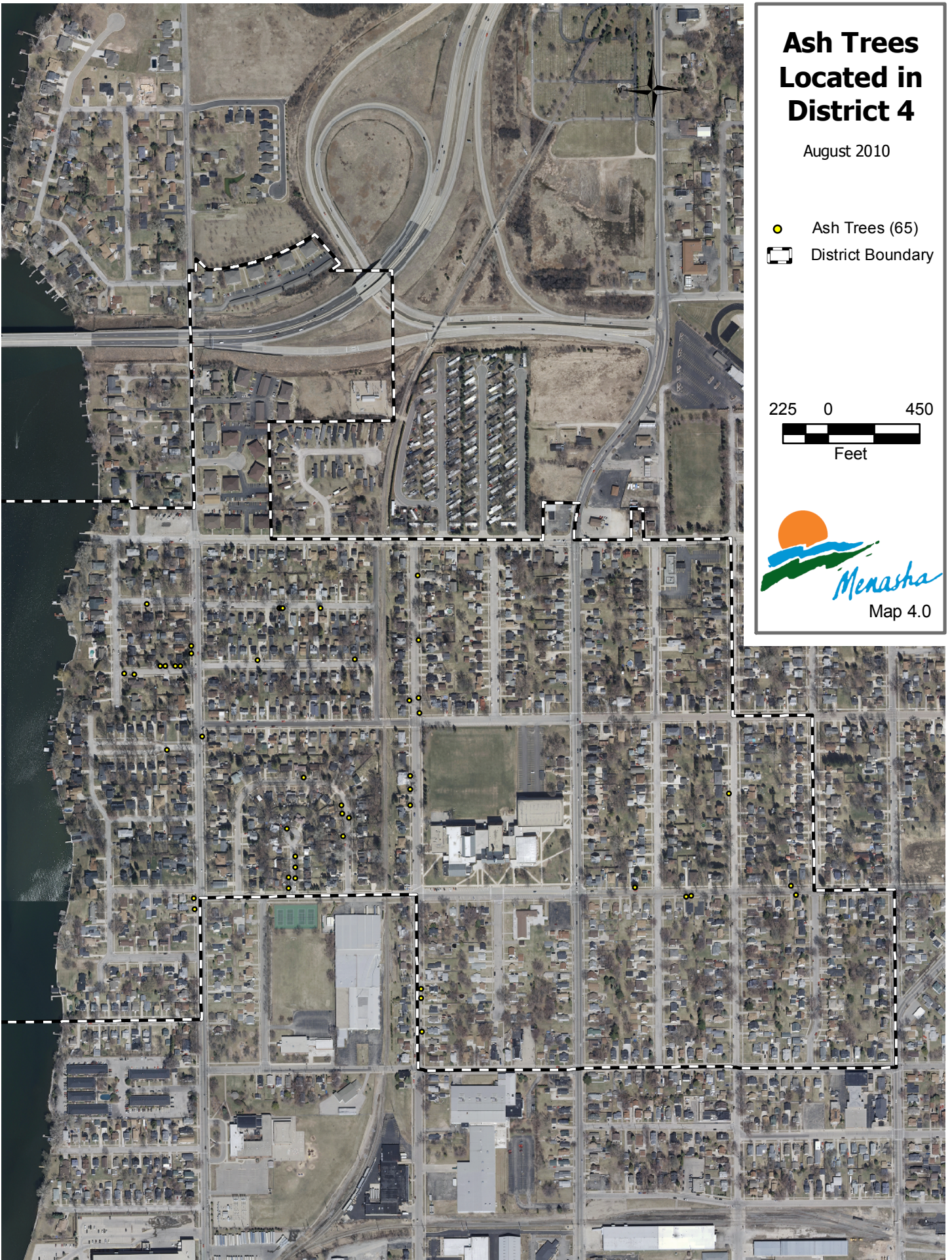
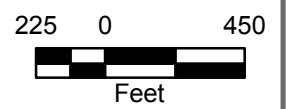
-  Ash Trees (74)
-  District Boundary

440 0 880

Feet

Ash Trees Located in District 4

August 2010

- Ash Trees (65)
- ▬ District Boundary







Ash Trees Located in District 5

August 2010



-  Ash Trees (42)
-  District Boundary



Map 5.0



Ash Trees Located in District 6

August 2010



-  Ash Trees (160)
-  District Boundary

Map 6.0

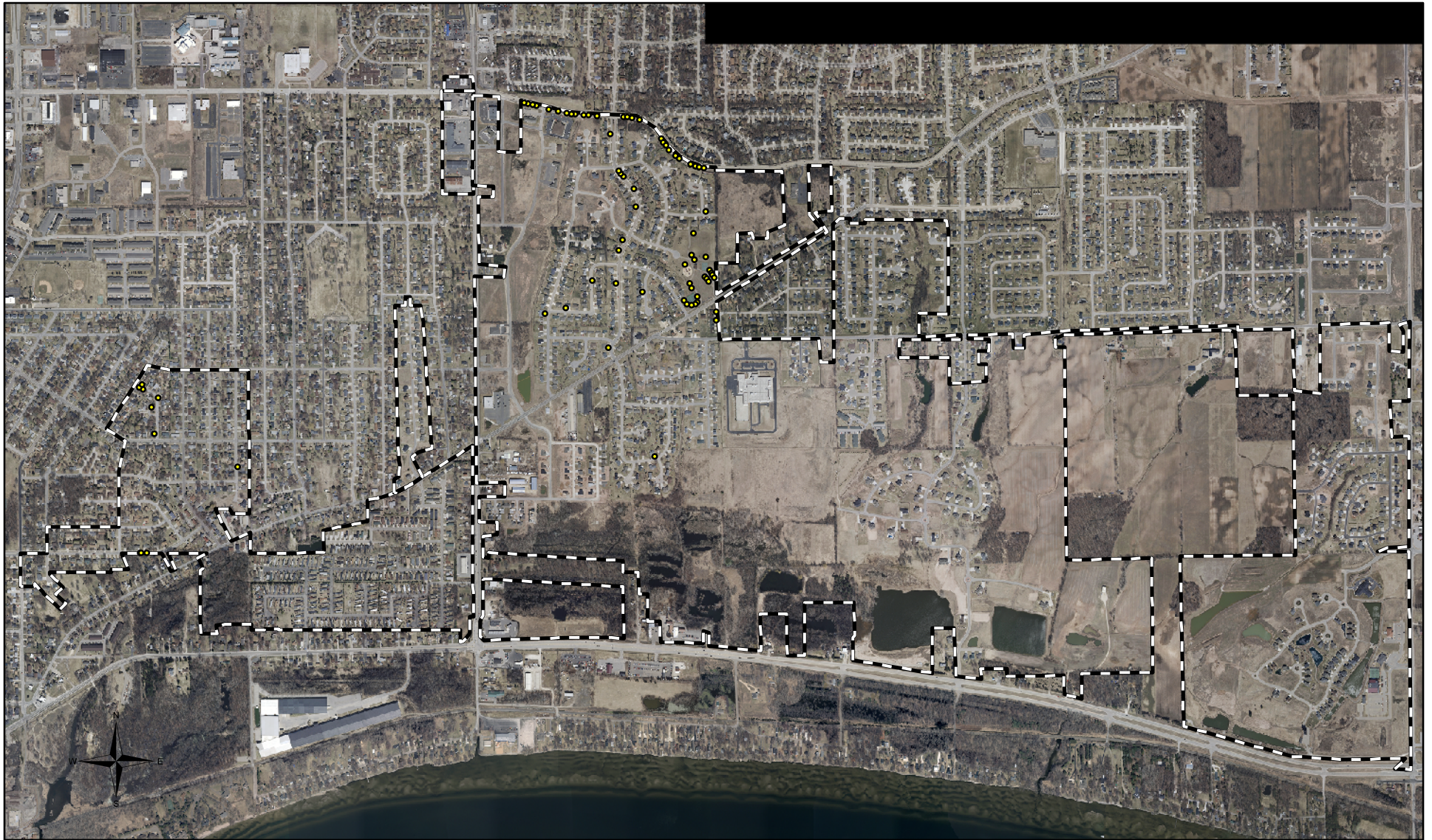


Ash Trees Located in District 7

August 2010

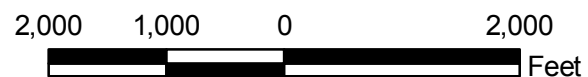
- Ash Trees (69)
- ▬ District Boundary

240 0 480
Feet



Ash Trees Located in District 8

August 2010





- Ash Trees (74)
- ▭ District Boundary

Map 8.0



Ash Trees Located in Resthaven & Oak Hill Cemeteries

August 2010

-  Ash Trees (37)
-  District Boundary

