

It is expected that a Quorum of the Board of Public Works, Park Board, Administration Committee, and/or Common Council may attend this meeting: (although it is not expected that any official action of any of those bodies will be taken)

**CITY OF MENASHA
LANDMARKS COMMISSION
Council Chambers, 3rd Floor
140 Main Street, Menasha**

March 16, 2016

4:30 PM

AGENDA

A. CALL TO ORDER

B. ROLL CALL/EXCUSED ABSENCES

C. MINUTES TO APPROVE

1. [Minutes of the February 16, 2016 Landmarks Commission Meeting](#)

D. PUBLIC COMMENT ON ANY ITEM OF CONCERN ON THIS AGENDA OR ANY ITEM RELATED TO THE LANDMARKS RESPONSIBILITIES OF THE LANDMARKS COMMISSION

Five (5) minute time limit for each person

E. COMMUNICATIONS

1. [Columns Newsletter – November 2015-January 2016](#)
2. [Columns Newsletter – February 2016-April 2016](#)

F. ACTION ITEMS

1. [Proposed Signage – 201 Main Street – One Menasha Center \(including Faith Technologies, Community First Credit Union and RLJ Dental Group\)](#)
2. [Proposed Façade Improvement – 204 Main Street – Your Daily Grind](#)
3. [Façade Improvement Grant Request – 204 Main Street – Your Daily Grind](#)
4. [2016 Photo Contest](#)
5. [2016 Historic Preservation Excellence Awards Nomination](#)

G. DISCUSSION

1. None.

H. PUBLIC COMMENT ON ANY ITEM OF CONCERN ON THIS AGENDA

Five (5) minute time limit for each person

I. ADJOURNMENT

Menasha is committed to its diverse population. Our Non-English speaking population or those with disabilities are invited to contact the Community Development Department at 967-3650 at least 24-hours in advance of the meeting so special accommodations can be made.

CITY OF MENASHA
Landmarks Commission
Council Chambers, 3rd Floor
140 Main Street, Menasha
February 16, 2016
DRAFT MINUTES

A. CALL TO ORDER

Meeting called to order by Chairman Grade at 5:02 PM.

B. ROLL CALL/EXCUSED ABSENCES

LANDMARKS MEMBERS PRESENT: Alderman Spencer, Commissioners Samantha Zinth, Tom Grade, and Dean Wydeven.

LANDMARKS MEMBERS EXCUSED: Commissioners Shellie Caudill and Paul Brunette.

OTHERS PRESENT: CDD Keil and AP Englebert.

C. MINUTES TO APPROVE

1. **Minutes of the February 10, 2016 Landmarks Commission Meeting**

Motion by Comm. Zinth, seconded by Ald. Spencer approve the minutes of the February 10, 2016 Landmarks Commission Meeting. The motion carried.

D. PUBLIC COMMENT ON ANY ITEM OF CONCERN ON THIS AGENDA OR ANY ITEM RELATED TO THE RESPONSIBILITIES OF THE LANDMARKS COMMISSION

No one spoke.

E. COMMUNICATIONS

1. None.

F. ACTION ITEMS

1. **Designation of Tayco Street Historic District**

AP Englebert introduced the proposal for the designation of the Tayco Street Historic District and the Racine Street Historic District. Commissioners discussed the design standards that properties in the historic district must meet and whether the standards are feasible for these districts going forward. Comm. Zinth stated that she was in favor of compact, contiguous district boundaries for each district. Motion by Comm. Zinth, seconded by Comm. Wydeven to approve the Tayco Street Historic District. The motion carried.

2. **Designation of Racine Street Historic District**

See item F(1) for discussion. Motion by Comm. Wydeven, seconded by Comm. Zinth to approve the Racine Street Historic District as proposed. The motion carried.

G. DISCUSSION ITEMS

1. None.

H. PUBLIC COMMENT ON ANY ITEM OF CONCERN ON THIS AGENDA

None.

I. ADJOURNMENT

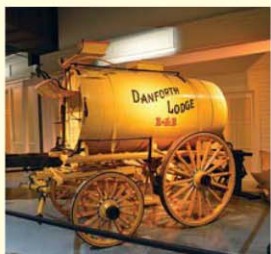
Motion by Comm. Zinth, seconded by Comm. Wydeven to adjourn at 5:17PM. The motion carried.

Respectfully submitted by AP Englebert.

COLUMNS

THE NEWSLETTER *of the* WISCONSIN HISTORICAL SOCIETY

IN THIS ISSUE



- 4** Danforth Lodge Street Sprinkler



- 6** Increase Lapham Papers Coming Online
- 2** Director's Column
- 3** 1957 Artifact Changes Teen View — Thanks to You
- 6** Proxmire Centenary
- 7** State Register of Historic Places
- 11** On Our Bookshelf
- 12** 2015 Mini-Grant Recipients
- 13** John Muir Reading Program
- 14** Events Calendar

UNCOVERING WISCONSIN'S MARINE MYSTERIES

Maritime Preservation Program brings shipwrecks, underwater sites to life

When not tucked away in their office on Madison's Eastside, two Wisconsin Historical Society staffers spend their summers diving into Wisconsin's not-so-briny depths, documenting pieces of history many of us will never experience: Wisconsin's shipwrecks and underwater sites.

LEARN MORE ON PAGE **8**



Photo by Brooke Weigel



ELLSWORTH H. BROWN
The Ruth and Hartley Barker Director

COLUMNS

KARA O'KEEFE, EDITOR

Published quarterly by the Wisconsin Historical Society, with one special issue in November, and distributed to members as part of their dues. Full membership levels begin at \$55 for individuals and \$65 for institutions (rates subject to change).

To join or for more information about membership, visit our website at support.wisconsinhistory.org or contact the Membership Office at 888-748-7479, email membership@wisconsinhistory.org or write to the Membership Office at the address below. Address inquiries about this publication to the editor, *Columns*. Media may reprint any article provided credit is given to the Wisconsin Historical Society and *Columns*. Periodicals postage paid at Madison, Wisconsin, account number 688820. Postmaster, send address changes to:

COLUMNS
Wisconsin Historical Society
816 State Street
Madison, WI 53706

DIRECTOR'S LETTER

THESE ARE WONDERFUL TIMES TO EXPLORE THE PAST. Thanks to modern technology, the doors to vaults in libraries, archives, and museums are being thrown wide open. Documents and artifacts once hidden to all but the most dedicated researchers are now literally at our fingertips. Wisconsin will take a great leap forward early next year when collections from more than 200 Wisconsin cultural institutions will join those of preeminent institutions across the land via the Digital Public Library of America, which we call by its shorthand name, DPLA.

DPLA is the portal, the web site you may not have visited. It was created in 2013 to provide public access to digital holdings on a vast scale. In simple terms, it is what we call a union catalogue that will use metadata — the information created when a record of an image, document, object, etc. is created in an archives, museum, library or similar institution. By using metadata, DPLA can respond to your searches by directing you to the web sites of these various institutions, thus providing you direct access to an almost untold amount of information that is growing rapidly in scale.

Currently, DPLA provides access to a one-stop-search of 11 million of the nation's books, manuscripts, images, art works, and museum objects. Researchers can see rare materials from Harvard, the Smithsonian, the National Archives, and more than 1,000 other contributors.

After two years of behind-the-scenes work, Wisconsin institutions are now ready to join their peers around the nation in DPLA. An implementation team led by our archivist Paul Hedges is about to contribute the metadata for more than 400,000 items owned by historical societies, museums, archives, and libraries.

These items include unique manuscripts such as the Society's Freedom Summer collection, antiquarian maps from the American Geographical Society Library collections at the University of Wisconsin-Milwaukee, and furniture and art objects owned by local museums around the state.

The DPLA site hosts only descriptions. If you click on a link, which we encourage you to do, you will be sent to the site or the institution that owns the object of the search. Try it at www.dp.la. If you are like me, you will lose the rest of your evening in a wonderful journey.

The Wisconsin initiative that is placing our collective materials in DPLA is called Recollection Wisconsin, a broadly collaborative effort of key institutions. It is possible for local museums, archives and libraries to get involved, too, by adding materials to Recollection Wisconsin. Details are at <http://recollectionwisconsin.org/organizations>.

EHB

COULD A SIMPLE ARTIFACT FROM 1957 REALLY CHANGE THE WAY A TEEN SEES THE WORLD TODAY? YES — THANKS TO YOU.

THE WISCONSIN HISTORICAL SOCIETY'S WORLD-CLASS

collection is one of Wisconsin's most important public resources. But it only has the power to change lives when we're able to share it with as many people as possible. When we work together to place powerful stories into the hands (and hearts) of others, amazing things happen.

Our shared history is so powerful that it recently gave a teen a glimpse of life beyond himself and fundamentally changed the way he sees the world.

In 1957, a baseball sized rock shattered the front window of Daisy Bates' home with a note attached that read "THE NEXT WILL BE DYNAMITE -K.K.K." When 16-year-old C.O.R.E. (a Community Option for Re-Engagement) Academy participant Chris* saw this piece during a recent tour of the Wisconsin Historical Society's archives, he was moved beyond words.



*Daisy Bates holding the rock in 1957. WHI 46780
As head of the Arkansas NAACP, Daisy Bates was instrumental in coordinating and mentoring the "Little Rock Nine" (the first black students integrated into Arkansas public schools in 1957). As a result of her leadership in the Civil Rights movement, she became a target of the Ku Klux Klan. To learn more visit whi.hist.org/daisybatesrock*

Holding the Daisy Bates rock in his hands, Chris connected with the American Civil Rights movement in an entirely new, strikingly personal way.

Across the state of Wisconsin, there are thousands of young people just like Chris

waiting to discover all the things history can teach them. Your special gifts help fund these kinds of impactful outreach efforts along with dozens of other worthwhile projects that contribute to a better quality of life for everyone in Wisconsin.

On behalf of our team of professionals and volunteers — not to mention the thousands of youth like Chris, students, and history lovers we serve — thank you for your support.

**Name changed for privacy*

MAKE A GIFT

If you would like to make a special, tax-deductible gift in support of the Wisconsin Historical Society before the end of the year, please visit support.wisconsinhistory.org/gifts, call 888-748-7479, or mail payment to: **Wisconsin Historical Foundation**
P.O. Box 260050
Madison, WI 53726-0050.

MEMBERS OUT AND ABOUT AROUND THE STATE



Members gathered Sept. 12 at the West Madison Agricultural Research Station for an exclusive celebration of author **Jerry Apps'** latest Wisconsin Historical Society Press book, "Wisconsin Agriculture: A History." Guests enjoyed a presentation and book signing with Apps, sampled Wisconsin-produced foods and toured the gardens.



Danforth Lodge Street Sprinkler

To see this wagon in person, visit the Carriage Museum at Wade House Historical Site. www.wadehouse.org

BEFORE THE ADVENT OF PAVING, street sprinklers played an important role in road maintenance. This wagon began life as a water sprinkler, but was converted to apply oil on road surfaces to control dust. The vehicle required two horses and two men to operate. The driver steered from high atop the barrel, while the oiler sat at the rear, operating the sprayers by hand.

The wagon is a prime example of work by the Studebaker Brothers Manufacturing Company, circa 1900. The Armour-Valentine Family of Oconomowoc, Wisconsin, purchased it to treat the roads of their estate, Danforth Lodge. After the estate closed, Wesley W. Jung, a local carriage expert, received the wagon filthy and covered with oil, a condition which protected it from rot and rust. Mr. Jung only had to paint the wagon and restore the Armour emblem to return it to life.

STATE ARCHIVIST LEADING NATIONAL ASSOCIATION

MATT BLESSING, State Archivist and Administrator for the Library-Archives, has been selected by his peers to serve as the 2015-2016 president of the Council of State Archivists (CoSA). Founded in 1989, CoSA partners with allied professional organizations to educate citizens and elected officials about the fundamental importance of open and efficient government record policies. Following the devastation of Hurricane Katrina, CoSA provided major leadership in offering cultural heritage professionals with training in emergency preparedness and disaster

response. In addition, CoSA has organized in-depth training on the management of permanent electronic records. When asked to identify his top priority for CoSA in the year ahead, Blessing responded, “simple — given the world that we live in — all archivists need to improve their program’s abilities to capture and preserve electronic records judged to have historical value.” Blessing emphasized that “tomorrow’s researchers are depending upon us to preserve today’s digital bits and bytes.” Learn more about the Society’s efforts to manage electronic records on page 6.



THE JAMES MADISON LECTURE SERIES CELEBRATION

A new annual lecture series on early American history honors the scholarship of the late University of Wisconsin-Madison historian, Dr. Merrill Jensen.

YEARS OF PARTNERSHIP BETWEEN THE WISCONSIN HISTORICAL SOCIETY AND THE CENTER FOR THE STUDY OF THE AMERICAN CONSTITUTION (CSAC), a

non-profit, non-partisan center at UW-Madison, recently led to the creation of the James Madison Lectures. Beginning in 2016, the new lecture series will feature eminent scholars of the Colonial and Early National era and will be presented annually in both Madison and Milwaukee.

A program to celebrate establishment of the lecture series was presented recently in Madison. On September 18, 2015,

Following the lecture was a question and answer session with Dr. Kaminski and Dr. Richard Leffler, retired Deputy Director of the CSAC. They answered the audience's questions about the personality and character of the republic's Founders.

The Library-Archives division led the Society's collaboration with the CSAC to create this new outreach program. Matt Blessing, Administrator, Library-

Archives Division, Wisconsin Historical Society, remarked, "Both organizations are committed to sharing scholarship and information with broad audiences. The James Madison Lectures are intended to continually engage a wide range of people in a deep examination of founding principles and the enduring lessons of this important era." The

lectures were recorded and will be made accessible to the millions of visitors who search the Society's website annually.

The James Madison Lectures honor the scholarly work of Dr. Merrill Jensen (1905-1980), whose research focused on the Age of the American Revolution. Dr. Jensen earned his PhD at UW-Madison in 1934 and joined the History Department faculty there in 1944. During nearly four decades of path-breaking research, Dr. Jensen also mentored dozens of doctoral students. Many of those historians went on to prominent teaching and research careers, and their cumulative contribution to historical scholarship is outstanding. Three former Jensen students attended the event in honor of their mentor.

The celebration was generously sponsored by the Lynde and Harry Bradley Foundation.



(Left to right) Conrad Goodkind, President of the Board of Curators, Dr. Ellsworth Brown, the Ruth and Hartley Barker Director of the Wisconsin Historical Society, Dr. Richard Leffler, former Deputy Director of the Center for the Study of the American Constitution and the Center's current Director, Dr. John Kaminski.

Dr. John P. Kaminski, Director of the CSAC, presented his work to 76 guests gathered at the University Club. After a reception and dinner, Dr. Kaminski spoke about: 'Re-establishing Order: A New Federal Constitution or Alternative Consequences.' The lecture examined how the 'anti-democratic' Constitution of 1787 was drafted and ratified. Dr. Kaminski also discussed alternative constitutional forms that might have emerged if the Constitution of 1787 was not adopted. Dr. Kaminski noted several instances in which key votes of the Constitutional Convention were very close and determined in part by circumstantial events. Alteration of just a few such votes would have resulted in a substantially different constitutional agreement and new outcomes in every aspect of our nation's history.



Wisconsin Historical
FOUNDATION

The Impact of Planned Gifts

JOHN A. PETERS was an extraordinary presence in the Society's main Library for nearly thirty years. He expertly guided students and scholars through the immense government publications collection. John was also a respected educator at UW-Madison. Hundreds of successful former students stand as a legacy to his skills as an educator.

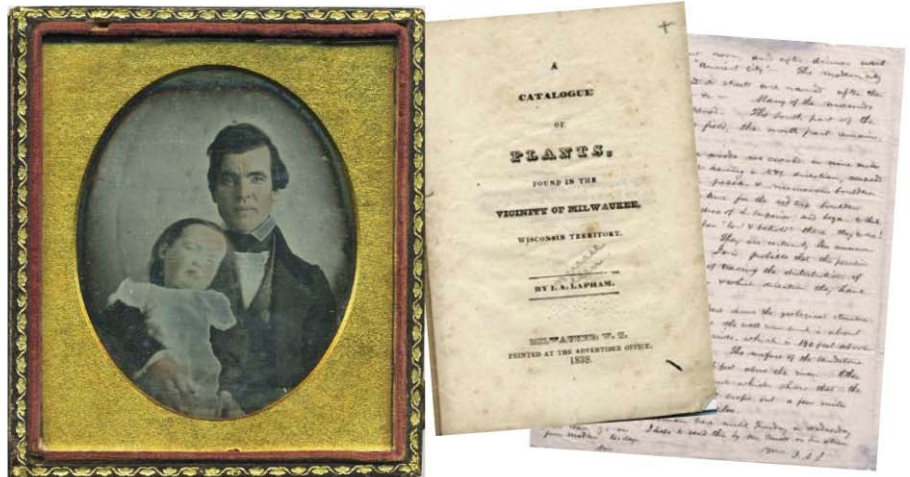
At his passing in 2014, John created another legacy to his classroom teaching through a bequest to the Society. A \$25,000 portion of his gift was designated as a challenge grant to help fund an endowment for the James Madison Lectures. Peters' gift has had a great impact and inspired the generosity of many donors. The Society is deeply grateful to Peters for his planned gift and to all contributors whose support has ensured that the James Madison Lectures will connect people to our nation's early history and founding principles for many years to come.

To find out more about the endowment for the James Madison Lectures, or to inquire about planned giving, contact Julie Lussier, Director of Development for the Wisconsin Historical Foundation. Please call 608-261-9587 or email julie.lussier@wisconsinhistory.org.



INCREASE LAPHAM PAPERS COMING ONLINE

WISCONSIN SCIENTIST INCREASE LAPHAM (1811-1875) was a pioneering scholar in natural history and one of Milwaukee's founding fathers. The 30 boxes of papers he left behind have been cited hundreds of times by historians. Thanks to a generous grant from the Council of University of Wisconsin Librarians, all 40,000 pages of Lapham's papers are being digitized and published online at wisconsinhistory.org. The project, headed by archivist Laura Farley, will last well into 2016. When completed, all of Lapham's correspondence, diaries, scientific notes, and other records will be available free to researchers on Wisconsin history, archaeology, the history of science, environmental studies, and related fields. If funding permits, the online collection will also contain museum objects and printed



publications associated with Lapham. Follow along at <http://whist.org/1HXZqF5> as new folders come online every week. Contact laura.farley@wisconsinhistory.org for more information.

Proxmire Centenary

Nov. 15 marks the centenary of the birth of William Proxmire, maverick Wisconsin senator and good friend of the Society.

With his wife Ellen and a few friends, he revived the Wisconsin Democratic Party after World War Two. He then represented the state in Washington for more than 30 years, championing human rights, consumer protection and honest government while opposing federal waste and corruption.

"He was 100 percent always on the side of the little guy," recalled colleague Rep. David Obey. "He hated government waste and he hated abuse of power."

After leaving office, Sen. Proxmire and his staff donated more than 200 boxes of records to the Society. Between 2008-2011, his widow and friends funded 40 oral history interviews with friends and colleagues. These interviews and 7,500 pages of documents are now available free at wisconsinhistory.org.

Sen. Proxmire died in 2005 and his widow in August of this year.



Recent Additions

STATE REGISTER OF HISTORIC PLACES

Mary and Harry Brown House

Marinette, Marinette County; Construction date: 1885 (altered to current appearance: 1922-1930)

This home was constructed in 1885 by lumber baron Isaac Stephenson as a wedding gift to his daughter, Mary. Originally designed in the Queen Anne style, the home was spacious and grand. But as tastes change, so too do architectural trends, and by the 1920s, the Tudor Revival style was fashionable in Wisconsin. Being fashionable members of society, Mary and her husband Harry, decided to assert their stylistic preferences and transformed their home into a beautiful Tudor Revival style house. Work progressed between 1922 and 1930 until the remodeling was complete. The house is largely unchanged since it received its Tudor Revival makeover, featuring hallmark characteristics of the style, including stucco walls, false half-timbering on the second story, front-facing gables, multi-gable rooflines, and multi-light and grouped windows. The interior is also preserved reflecting both its Queen Anne and Tudor Revival history. Today, this house is one of the best examples of the Tudor Revival style in Marinette.



Hanover Shipwreck (Schooner Vessel)

Town of Gibraltar, Door County, Shipbuilder: Charles Stevens; Construction date: 1853

The *Hanover*, a Great Lakes schooner, is an example of a vessel type that was vital to Wisconsin's economy and the economy of the Midwest through maritime bulk cargo transportation, an infrastructure prior to the development of road and rail networks. Constructed prior to the Civil War, the *Hanover* represents one of the earliest examples of schooner construction.

Additional information from the site may significantly add to our understanding of Great Lakes sailing vessels. Nineteenth-century wooden vessels were rarely built to drawn plans. Today, little documentation exists that illustrates how these vessels were constructed, the nuances of differing hull lines, construction techniques, and adaptations to bulk cargo needs, between ships. One of the earliest documented schooners in Wisconsin waters, data gathered on the *Hanover* has increased our understanding of early schooner construction, and may yield additional information essential to understanding how they were used in nineteenth century maritime commerce.

Spellman Granite Works

Sauk City, Sauk County; Construction date: 1917

The Spellman Granite Works company was located in this building between 1917 and 2005. Established in 1915 by brothers Bill, Harry and John Spellman, Spellman Granite Works was the leading industry of its kind in the village of Sauk City and was well-known throughout the Midwest. With a showroom, workshop, and offices, the company designed, manufactured and installed cemetery monuments, cornerstones, markers, urns, and statuary. Spellman Granite Works was a mainstay of Sauk City's industrial landscape throughout the early- to mid- twentieth century and is the most visible and best-preserved building representing the village's industrial heritage, an important component of the community's history.



Holy Name Seminary

Madison, Dane County, Architect: Krueger, Kraft & Associates; Construction date: 1964

Holy Name Seminary is an excellent example of the Neo-Colonial Revival style of architecture. A direct descendent of the Colonial Revival style of the early 20th century, it was used most prolifically in the 1950s and 1960s, coinciding with the nationwide post-war building boom. Neo-Colonial Revival buildings typically featured readily identifiable classical door surrounds, colonnaded entry porches, and dentil cornices.

Holy Name Seminary is an unusually large, high-style example of the Neo-Colonial Revival style in Wisconsin. The style, often associated with universities in the United States, was chosen to convey a sense of tradition with the permanence and integrity of America's oldest and most venerable educational institutions. Stately Georgian exterior detailing and no-nonsense institutional interior spaces mix traditional and modern elements that characterized the Neo-Colonial Revival style in the 1950s and 1960s.

OTHER PROPERTIES LISTED: Nicolet High School, DePere, Brown County; Pathfinder Shipwreck, Town of Two Creeks, Manitowoc County; Success Shipwreck, Town of Sevastopol, Door County

Uncovering Wisconsin

MARITIME PRESERVATION PROGRAM BRINGS

By Amanda N. Wegner

When not tucked away in their office on Madison's East Side, two Wisconsin Historical Society staffers spend their summers diving into Wisconsin's not-so-briny depths, documenting pieces of history many of us will never experience: Wisconsin's shipwrecks and underwater sites.

"We take the story beyond the newspaper accounts and bring shipwrecks to life," says Tamara Thomsen, a maritime archaeologist with the Maritime Preservation Program. "When you're able to go down and record how a ship was built, what it looked like, cultural artifacts, you're able to paint a picture, to get an idea of how the sailors or passengers lived and worked on that ship."

And that's exactly what Thomsen and fellow maritime archaeologist Caitlin Zant do as they breathe life into Wisconsin's long-forgotten fleet of underwater treasures and make them available for all to see.

Piecing the puzzle

Thomsen and Zant, with the help of 12 experienced volunteers, complete three to four grant-funded projects annually, documenting a variety of underwater sites primarily in lakes Michigan and Superior.

"It's not just about shipwrecks, but all submerged cultural resources: historic lumber piers, fish weir sites, inundated fur trade sites," says Thomsen.

Onsite for one to two weeks at a time mid-June to late August, Thomsen and Zant work with volunteers to do drawings, take measurements, record video and gather site descriptions. At shallow-water sites, divers do underwater scale drawings using dive

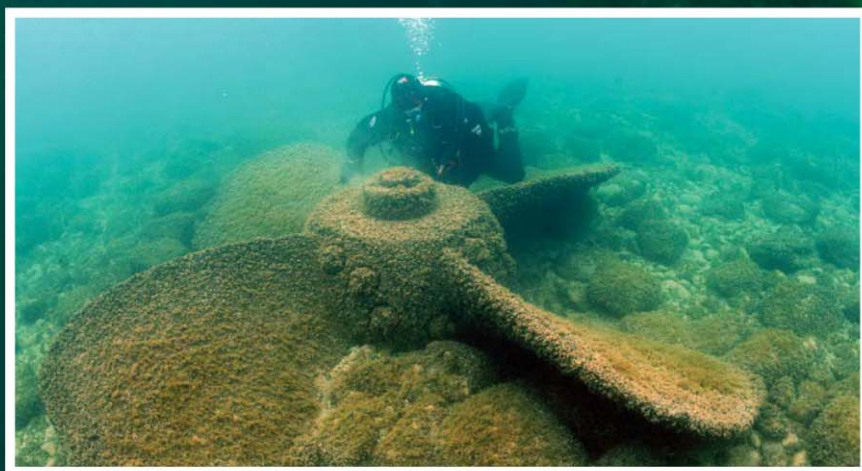
slates, moving along the site or wreck in 10- to 20-foot intervals to get a complete scale drawing. (At deeper sites, full-scale drawings aren't always possible.) In the evening, after cleaning and checking gear, all the information and drawings gathered underwater is transferred to paper.

"You kind of piece it all together like a puzzle," says Zant. "It's a whole lot of fun trying to transcribe what you drew underwater."

Preservation in action

In the past two years, Zant, Thomsen and their volunteers have worked on a slew of projects, including the culmination of a multi-year project documenting the Milwaukee Car Ferry.

Built in 1903, this ferry vessel took railcars across Lake Michigan, but on Oct. 23, 1929, right before the stock market crash, it sank in a bad storm, killing all 56 men



Background photo by Tami Thomsen

n's Maritime Mysteries

S SHIPWRECKS, UNDERWATER SITES TO LIFE

Photo by Tami Thomsen



Photo by Tami Thomsen



on board. One of Wisconsin's more well-known shipwrecks, it had long been postulated that in the storm, a loose railcar broke the sea gate and fell off the back, sinking the ferry.

"One of our major questions was if this was true," says Thomsen. "We discovered it was not."

As one of Zant's first projects, she examined, measured and cataloged the wreck and its railcars. None of the rail cars were missing, the mystery was solved, and the site was added to the National Register of Historic Places in early August.

This summer, the team returned to the SS Wisconsin, a Goodrich steamer that sank near Kenosha in 1929. The wreck was first fully documented and surveyed in the mid-2000s, but the team was revisiting the wreck to collect data to test a long-standing belief in the diving community that metal shipwrecks are collapsing on themselves. At the center of the question is how zebra and quagga mussels, which have helped clean up the water of the Great Lakes and increase visibility despite being invasive species, may be harming shipwrecks.

Like humans, mussels exhale carbon dioxide, which becomes carbonic acid in water.

This acid, explains Zant, rusts the ship's

metal, making it thinner and compromising the vessel's shape and strength.

"We wanted to test and quantify that," she says.

Because there is video and a photo mosaic of this wreck, the SS Wisconsin provided an opportunity to do a 10-year study to determine how the wreck may be changing.

Working with a professor and graduate student who utilize special software to determine how 3D video models change over time, the intent of this summer's dive was to capture new video data. This new video will not only be used to create a new 3D model to compare against the 2005 data, but also as public outreach to create a virtual "swim-through," bringing the shipwreck to life to those of us who might never otherwise experience one.

"These are time capsules, and for the longest time, these sites were only available to divers," says Zant. "But these are everyone's shipwrecks, everyone's property, so it's important that we get as much information as possible and make these resources available to everyone."



Photo by Christa Waller



WHILE THE TEAM HAS HAD PLENTY OF GRANT-FUNDED WORK to keep them busy, low water levels in 2013 uncovered 11 new shipwrecks the last two seasons.

"With the low water levels causing sand movement, many of these wrecks hadn't been affected by invasive elements and at several sites, they were so well preserved it looked like the ship went down yesterday!" says Thomsen. "We felt compelled to record everything that we could, as it might be our only chance in time."

In the past two years the team has had 14 ships reported to them and they've been able to visit and record ten of them. They found themselves landlocked sometimes due to inclement lake conditions. Here are a few of their more recent finds:

Schooner Hanover

Two-masted wooden schooner, 109 feet
Built in 1852
Sank in 1867 in Green Bay, near Chambers Island

The *Hanover* was found by a conservation warden who was called to assist a boater. When the warden returned to the site a few weeks later, the wreck was buried in 9 feet of sand.

Scow Schooner Success

103 feet long
Built in 1875
Sank in 1896 off Whitefish Dunes State Park, Door County

An interesting wreck because it sank twice in the exact same place, a lumber pier in Whitefish Bay; first in 1893, again in 1896.

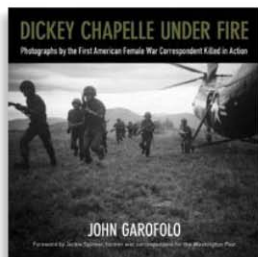
Schooner Pathfinder

188 feet long
Built in 1869
Sank in 1886, just north of Raleigh Point, between Two Rivers and Kewaunee

In addition to the vessel's rare build and unusual framing pattern, newspaper accounts reported it sank in a bed of quicksand, a "fact" that neither Zant nor Thomsen originally thought to be true. But when Thomsen attempted to draw the vessel and proceeded to sink to her waist in the sand, it seemed the newspaper reports were right.

To learn more about Wisconsin's shipwrecks and underwater sites, visit www.wisconsinshipwrecks.org.

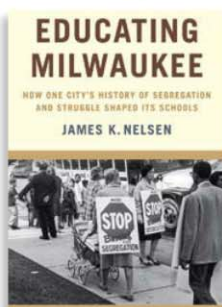
Under Fire: Dickey Chapelle's Life of War & Photos



From World War II to Vietnam, Wisconsin native Dickey Chapelle fought to be taken seriously as a female war correspondent, and along the way broke barriers for future generations of female journalists. This November, the 50th anniversary of her death covering a U.S. Marine patrol in Vietnam, the Society Press released "Dickey Chapelle Under Fire: Photographs from the First American

Female War Correspondent Killed in Action" by John Garofolo. The book showcases some of her most poignant photos, including images from Iwo Jima and Okinawa, the Dominican Republic, and Vietnam, drawn from the thousands of photographs housed in the Wisconsin Historical Society archives. Between the images, Garofolo also tells Dickey's inspiring personal journey, as a trailblazing journalist who sometimes risked her life to tell a story and whose work often shared the bigger stories, on and behind the battlefield, with millions of American readers of such publications as "Life," "National Geographic," and "Readers Digest."

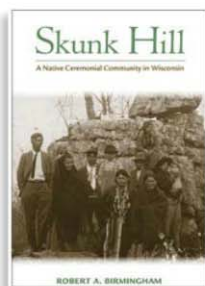
"Educating Milwaukee," A History of Choice



This November, author James K. Nelsen details one of the most unique and controversial stories in Milwaukee history—the education of its children. In "Educating Milwaukee: How One City's History of Segregation and Struggle Shaped Its Schools" Nelsen traces the origins of the modern school choice movement, following Milwaukee's tumultuous education history through three eras: "no choice," "forced choice," and "school choice." This new Society Press book chronicles how competing

visions of equity and excellence have played out in one city's schools in the modern era, offering both a cautionary tale and a "choice" example.

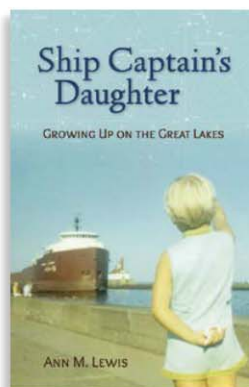
"Skunk Hill" Details Native Community History



Retired state archeologist Robert A. Birmingham digs into the history of "Tah-qua-kik," a ceremonial Potawatomi community established on a bluff in Wood County, Wis. in 1905, in his new Society Press book, "Skunk Hill." Birmingham traces the community's largely-unknown story, detailing the role it played in preserving Native culture through a harsh period of US Indian policy from the 1880s to 1930s. The story's central focus is the Drum Dance,

also known as the Dream Dance or Big Drum, a pan-tribal cultural revitalization movement that swept the Upper Midwest during the Great Suppression, emphasizing Native values and rejecting the vices of the white world. Though the community disbanded by the 1930s, the site is now on the National Register of Historic Places and two dance circles are still visible on the grounds.

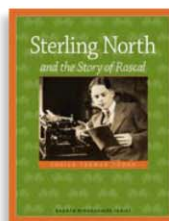
Ship Memoir Grows Up on the Great Lakes



Settle into winter with a memoir that will warm your heart, "Ship Captain's Daughter: Growing Up on the Great Lakes" by Ann Lewis. With lively storytelling and vivid details, Lewis captures the unusual life of families, like her own in Superior, Wis. whose days and weeks revolved around the Great Lake's shipping industry. She paints an intriguing and affectionate portrait of her father, a talented pianist whose summer job eventually led him from deckhand to ship captain. Lewis, who accompanied her dad to the ports of Milwaukee, Chicago, Toledo, and Cleveland on the lower Great

Lakes, describes sailing through stormy weather and starry nights, visiting the engine room, dining at the captain's table, and wheeling the block-long ship with her father in the pilot house. Through her mother's stories and remarks, Lewis also reveals insights into the trials and rewards of being a ship captain's wife. The book is enhanced by the author's vintage snapshots, depicting this bygone lifestyle.

Book Tells the Tale behind the Beloved "Rascal" Story



Learn how childhood adventures inspired a Wisconsin writer to pen one of the best-selling children's books of all time, "Rascal," in the Society Press's new book for young readers "Sterling North: and the Story of Rascal." Rascal was the name of North's childhood pet, a raccoon he befriended in the early 1900s after his mother died of pneumonia. North and Rascal enjoyed many adventures, from camping and fishing to racing the streets of Edgerton, Wis., on North's trusty blue bicycle, that inspired North's beloved children's book, one of many books the award-winning author wrote during his celebrated career.

New Society Press Page Makes Book Club Suggestions

"Ship Captain's Daughter" (see story) is just one of several Society Press books that are high on the selection list for book clubs and readers circles statewide. Due to the book club popularity of several titles, the Society Press has launched a new web page just for book clubs linked in the left side of its homepage at www.wisconsinhistory.org/whspress. The page features our most popular book club titles, new suggestions for great book club reads, and a PDF document with suggested book club questions for each title. Among the books included are Jerry Apps's "The Quiet Season," "Limping through Life," and "Whispers and Shadows" as well as "Return to Wake Robin" by Marnie Mamminga, "My Life with the Green & Gold" by Jessie Garcia and "Finding Josie" by Wendy Bilen.

MEMBERS
SAVE ON
BOOKS

Society members receive a 10% discount on all book orders.

For more information on books published by the Wisconsin Historical Society Press, visit wisconsinhistory.org/whspress.

LOCAL HISTORICAL SOCIETY HIGHLIGHTS

2015 Mini-Grant Recipients WISCONSIN COUNCIL FOR LOCAL HISTORY AND WISCONSIN HISTORICAL SOCIETY

THE SOCIETY AND COUNCIL ARE PLEASED TO ANNOUNCE 26 local history organizations and affiliates received awards to aid their efforts in preserving artifact and archival collections. These generous awards totaled \$14,984. This list represents a total of 18 organizations who are first time applicants or first-time recipients of a mini-grant award. The local history community has also been hard at work to raise funds to match a gift from Ruth DeYoung Kohler. This matching gift will enable the Society and Council to award additional grants to the 390 affiliates throughout Wisconsin. To learn more about how you can support local history organizations through the mini-grant match program, visit: support.wisconsinhistory.org/minigrant2015

2015 Recipients

1897 Clark County Jail Museum	Past Perfect software
Bayfield Heritage Association	Archival storage supplies
Butte des Morts Historical Pres. Society	Archival storage supplies
Calumet County Historical Society	Archival storage supplies
Cottage Grove Historical Society	Archival storage supplies
Dane County Historical Society	Archival storage supplies
Friends of Schumacher Farm	Collections storage supplies
Geneva Lake Museum	Archival storage supplies
Iowa County Historical Society	Archival storage supplies
Kenosha County Historical Society	Archival storage supplies
Manitowoc County Historical Society	Archival storage supplies
Monroe County Historical Society	Archival storage supplies
Neenah Historical Society	Collections storage supplies
New Glarus Historical Society	Archival storage supplies
Old Franklin Historical Society	Past Perfect upgrade/supplies
Ozaukee County Historical Society	Computer and photo supplies
Polk County Historical Society	Past Perfect upgrade
Poynette Area Historical Society	Archival storage supplies
Prescott Area Historical Society	Past Perfect software
Ripon Historical Society	Computer
St Croix Falls Historical Society	Digitization project
Stone Lake Area Historical Society	Collections lighting
Two Rivers Historical Society	Past Perfect software
Westby Area Historical Society	Past Perfect software
Williams Bay Historical Society	Past Perfect software
Winnebago County Historical Society	Past Perfect software

2015 Board of Curators Awards

EACH YEAR, THE SOCIETY'S GOVERNING BOARD OF CURATORS recognizes individuals and organizations across the state for meritorious work in areas relating to the Society's mission. At its meeting on Aug. 28, 2015, the Board unanimously approved the following awards for work performed in 2014:

- **Book Award of Merit** — Martha Bergland and Paul G. Hayes, "Studying Wisconsin: The Life of Increase Lapham," "Early Chronicler of Plants, Rocks, Rivers, Mounds" and "All Things Wisconsin," Wisconsin Historical Society Press.
- **Genealogy Book Award** (in association with the Wisconsin Genealogical Society) — Brian L. and Mary Mierow Blakeley, "Ordinary People: A Study of Our Blakeley" and "Mierow Ancestors in America."
- **Governor's Award for Archival Advocacy** (in association with the Wisconsin Historical Records Advisory Board) — Professor Birute Ciplijauskaite, Director, Institute for Research in the Humanities, University of Wisconsin-Madison.
- **Governor's Award for Archival Innovation** (in association with the Wisconsin Historical Records Advisory Board) — Kathie Bernstein, Milwaukee Jewish Museum, "Stitching History from the Holocaust" exhibition.
- **Historic Preservation Award** — Larry Reed, Evansville, for preservation leadership in the village of Cooksville.
- **Historic Restoration Award** — The Alexander Company, Madison, for conversion of a 1917 school into a commercial residential property.
- **Public Program Award** — Manitowoc County Historical Society, "Buffalo Bill Wild West Show," Pinecrest Historical Village, Manitowoc, June 14-15, 2014.
- **Reuben Gold Thwaites Trophy for Local History** — Rock County Historical Society.

Information on award criteria, nominations and deadlines can be found on the Society's website.

PAPERLESS E-VERSION OF COLUMNS NOW AVAILABLE

We invite you to view the new e-version of *Columns* at whist.org/societynewsletters.

To sign up to receive the paperless, e-version of *Columns* only, visit support.wisconsinhistory.org/ecolumns.

If you would like to receive both paper and electronic copies, sign up to receive emails from the membership office at whist.org/memberemails.

ALPHABET SOUP:

FEDERAL SUPPORT ENHANCES SOCIETY PROGRAMS

THE WISCONSIN HISTORICAL SOCIETY has established a record of securing support from federal granting agencies, always aimed to improve the Society's varied programs. Several recently announced grants will continue that impressive tradition.

In 2015, the Society was awarded \$1.36 million in grants, the largest amount in more than a decade. Every federal grant agency that traditionally supports historical services, including the Institute of Museum and Library Services (IMLS), National Park Service (NPS), National Endowment for the Humanities (NEH), and the National Historical Publications and Records Commission (NHPRC) will be augmenting Society programs.

The NHPRC, the granting office of the National Archives, has awarded Library-Archives with a \$166,700 State Government Electronic Records grant. Wisconsin was just one of four state archives programs selected for this new award category. Working in close partnership with records officers within four other state agencies, the three-year project will result in the development of sustainable electronic records workflow practices. The grant further advances the State Archives in the development of hybrid services, preserving and providing access to print, analog, and electronic formats.

Preservation staff are completing work on a 20-month "Connecting to Collections" grant awarded by the IMLS. The \$237,000 grant

allowed Society and statewide partners to provide preservation training to 600 cultural heritage workers. In-depth instruction was offered in five communities around the state.

The Society has also been awarded a \$262,816 grant from the NEH to support the digitization of weekly Wisconsin newspapers published prior to 1923 and in the public domain. An advisory

committee comprised of scholars, local historians, public and academic librarians will assist Society librarians in identifying which newspaper titles to digitize. The digitized content will be permanently maintained by the Library of Congress in their "Chronicling America: Historic American Newspaper" and, of course, in the UW-WHS shared library catalog.

Lastly, the Society continues to receive federal funding provided by the National Park Service. Funds from the Native American Graves Protection and Repatriation Act (NAGPRA) consultation and documentation grant allow the Society to continue to review documentation for more than 350 individual remains and complete additional research on each burial

location. Most importantly, funds allow the Society to consult with representatives from our Tribal grant partners — the Forest County Potawatomi Community, the Ho-Chunk Nation, the Lac du Flambeau Band of Lake Superior Ojibwe and the Menominee Indian Tribe.



John Muir Exhibit and Reading Program



DOZENS OF COMMUNITIES AROUND THE STATE HAVE BEEN INVITED to host a traveling exhibit and reading program about John Muir in 2016.

The exhibit tells the story of Muir's Wisconsin years and connects his conservation work to current issues. The reading program gives each local public library or historical society enough free copies of his memoir, "The Story of My Boyhood and Youth," for a book club to read and discuss while the exhibit's in town. Muir's classic will be supplemented by a free anthology of primary sources on Wisconsin's environmental heritage, from Native American creation narratives to Aldo Leopold, Gaylord Nelson, and beyond. Wisconsin Historical Society author Michael Edmonds will give a presentation on Muir and lead a discussion of the two books in each community.

A few slots are still available. If you'd like to bring the exhibit and reading program to your town, contact Michael Edmonds at 608-264-6538.

Events

WISCONSIN HISTORICAL SOCIETY EVENTS

EXHIBITS

FEB. 19, 2015-March 31, 2016; NORTHERN GREAT LAKES VISITOR CENTER, ASHLAND
Father of the Park: Gaylord Nelson and the Apostle Islands National Lakeshore

An exhibit featuring Senator Nelson's efforts to create public access to the Apostle Islands.

WHM AUG. 18, 2015-APR. 2, 2016; WISCONSIN HISTORICAL MUSEUM, MADISON
Contemporary Canvases of Native Nations

Celebrate Native artists of Wisconsin and their rich traditions in this exhibition developed by the Wisconsin Historical Museum's 2015 Exhibit Interns.

WHM OCT. 20, 2015-FEB. 13, 2016; WISCONSIN HISTORICAL MUSEUM, MADISON
Wisconsin Goes Hollywood

The exhibit will feature famous Wisconsinites who've made the road to Hollywood along with costumes, photographs, how Wisconsin has been portrayed on television and Wisconsin references in pop culture.

NOV. 1-NOV. 30; COLLEGE OF CHARLESTON LIBRARY, CHARLESTON
Risking Everything Exhibit in Charleston, SC
 Traveling exhibit about the 1964 Mississippi Freedom Summer campaign.

KENOSHA

OCT. 1-NOV. 30 KENOSHA PUBLIC LIBRARY-SOUTHWEST, KENOSHA
Wisconsin History Tour
 Come and see an exhibit of historic photographs, documents and stories about the Kenosha community. Join us for FREE events Nov. 9-13.

ONLINE

APRIL 8-DEC. 31; ONLINE WEBINAR, WISCONSINHISTORY.ORG
Recorded Webinar: The Draper Manuscripts
 Webinar guides researchers in the use of the manuscripts collected by Lyman Draper, the Society's first director.

NOVEMBER

VL NOV. 1, 11 AM-4 PM; VILLA LOUIS, PRAIRIE DU CHIEN
Friends and Neighbors Day
 Free admission for Crawford County residents!

NOV. 7, 8:30 AM-4:30 PM; MEMORIAL LIBRARY, MADISON
German American Genealogy
 Join this all-day workshop to learn how to research German-speaking ancestors. **R**

WH NOV. 7, 11 AM-3 PM; WADE HOUSE, GREENBUSH
Hearthside Dinners
 Enjoy a delicious hearth-cooked meal, prepared with your own hands, in the historic Wade House stagecoach hotel. **R**

NOV. 9, 6:30 PM; KENOSHA PUBLIC LIBRARY-SOUTHWEST, KENOSHA
Wisconsin History Tour
Victorians' Secrets: The Revealing History of Women's Underwear with Leslie Bellais
 Leslie Bellais shares the secret behind Victorians' tiny waists and explores how women's undergarments reflected societal values.

NOV. 10, 10 AM; KENOSHA PUBLIC LIBRARY-SOUTHWEST, KENOSHA
Wisconsin History Tour
Practical Preservation for Your Family Treasures
 Learn pragmatic ways to preserve a variety of family treasures.

NOV. 10, 12 PM; KENOSHA PUBLIC LIBRARY-SOUTHWEST, KENOSHA
Wisconsin History Tour
A Settler's Year — Book Talk
 Join top-selling writer Kathleen Ernst, of the Society Press's book "A Settler's Year," on a picturesque journey through the seasons that shaped the lives of early Wisconsin settlers.

WHM NOV. 10, 12:15-1 PM; WISCONSIN HISTORICAL MUSEUM, MADISON
History Sandwiched In: An Up-Close Look at Southern Wisconsin's Glacial Landscape
 Discover how Southern Wisconsin's glaciated landscape came to be what it is today with UW-Madison Emeritus Professor David Mickelson.

NOV. 10, 2 PM; KENOSHA PUBLIC LIBRARY-SOUTHWEST, KENOSHA
Wisconsin History Tour
Your Stuff, Your Story
 Bring an item that has a story to tell such as a historic photo, art, glassware, clothing, or collectables such as breweriana or dolls and share your story with Jim Draeger.

KENOSHA

WISCONSIN HISTORY TOUR: "A SALUTE TO VETERAN HISTORY"

NOV. 11; KENOSHA PUBLIC LIBRARY-SOUTHWEST, KENOSHA
Wisconsin Veteran Stories Documentary Screenings

Special screenings of veteran-history documentaries produced in partnership with the Wisconsin Veterans Museum, Wisconsin Public Television and the Wisconsin Historical Society will be shown throughout Veterans Day at the following times. The screenings are free and open to the public.

10 AM: Wisconsin World War II Stories

A special introduction by the Wisconsin Veterans Museum will highlight the service of Wisconsin World War II veterans.

11 AM: Wisconsin Korean War Stories

This documentary segment features the stories of several Wisconsin Korean War veterans, from the "forgotten war." A Veterans Day Moment of Silence will be observed at 11 a.m.

1 PM: Wisconsin Vietnam War Stories

Providing insight into the history of the Vietnam War, Wisconsin veterans share moving stories of triumph and loss in the field of duty, brotherhood and companionship in the ranks, and the "welcome home" they never received after answering their country's call.



NOV. 11, 2 PM; KENOSHA PUBLIC LIBRARY-SOUTHWEST, KENOSHA
Tracing Your Military Ancestors

Come to this presentation to learn how to use the military collections of the Wisconsin Veterans Museum and the Wisconsin Historical Society Library Archives to put together the stories of your ancestors who served their country through military service.

NOV. 11, 7:30 PM; REUTHER CENTRAL HIGH SCHOOL AUDITORIUM, KENOSHA
1st Brigade Band: A Concert of Civil War Music

Dr. Ellsworth H. Brown, The Ruth and Hartley Barker Director of the Wisconsin Historical Society, and Lance Herdegen, Civil War Museum historical consultant, host a memorable evening concert. Re-enactor musicians will play from original Civil War sheet music on period instruments and read soldiers' letters from the Wisconsin Historical Society's vast Civil War collection. The Society's collection was recently profiled in the Society Press book "This Wicked Rebellion: Wisconsin Civil War Soldiers Write Home."



NOV. 10, 5:30 PM; KENOSHA PUBLIC LIBRARY-SOUTHWEST, KENOSHA Wisconsin History Tour Meet & Greet and Guided Tour of the Exhibit

Join your hosts, Society Director of Outreach Jim Draeger, and Wisconsin History Tour Coordinator Mary Jane Connor at the Kenosha Public Library-Southwest for a personal welcome and a guided tour of the exhibit.

NOV. 12, 10 AM; KENOSHA PUBLIC LIBRARY-SOUTHWEST, KENOSHA Wisconsin History Tour The Civil Rights Movement in Fact and Fiction

Historian Michael Edmonds will lead a conversation on how the depiction of Jim Crow segregation in Harper Lee's novels compares to the reality of segregated Mississippi, and discuss the history of the 1964 Freedom Summer campaign.

NOV. 12, 12 PM; KENOSHA PUBLIC LIBRARY-SOUTHWEST, KENOSHA Wisconsin History Tour Beer Barons of Lake Geneva

This program will highlight the many beer barons that had vacation homes along the Shore of Geneva Lake with a special emphasis on Conrad Seipp, the owner of Black Point Estate, the newest Wisconsin Historical Society site.

NOV. 12, 5:30 PM; KENOSHA PUBLIC LIBRARY-SOUTHWEST, KENOSHA Wisconsin History Tour History Happy Hour

Join author Jim Draeger and Tour Coordinator Mary Jane Connor for a beer history happy hour to yak it up over Wisconsin's favorite beverage, decorate your own beer labels and learn more about Wisconsin's beer history.

NOV. 13, 10 AM; KENOSHA PUBLIC LIBRARY-SOUTHWEST, KENOSHA Wisconsin History Tour Wisconsin Lighthouses — Book Talk

Join Ken and Barb, co-authors of the Society Press book "Wisconsin Lighthouses: A Photographic and Historical Guide," for a 'tour' of the state's lighthouse tradition and the stories of men and women who kept the critical maritime beacons lit.

NOV. 13, 12 PM; KENOSHA PUBLIC LIBRARY-SOUTHWEST, KENOSHA Wisconsin History Tour Shipwreck Preservation off Kenosha's Coast

Dive into the history of the SS Wisconsin and the recent archaeological work conducted on the site, located 4 miles off the coast of Kenosha.

OWN NOV. 14, 10 AM-12 PM; OLD WORLD WISCONSIN, EAGLE Old World Foundation's Dog Walk for the Animals

Stroll the scenic grounds of Old World Wisconsin with your leashed, friendly dog.

VL NOV. 14-15; VILLA LOUIS, PRAIRIE DU CHIEN Kids in a Victorian Kitchen

This is a hands-on cooking workshop for children entering grades 3-8. **R**

WH NOV. 14, 11 AM-3 PM; WADE HOUSE, GREENBUSH Hearthside Dinners

Enjoy a delicious hearth-cooked meal, prepared with your own hands, in the historic Wade House stagecoach hotel. **R**

VL NOV. 27-29; VILLA LOUIS, PRAIRIE DU CHIEN Victorian Home for the Holidays

These special tours include a visit to the Dousman parlor for a Christmas recital on the restored 1879 Steinway Centennial D. piano. **R**

MIM NOV. 28, 10 AM-4 PM; MADELINE ISLAND MUSEUM, LA POINTE Island Holiday Boutique

Participate in arts and crafts activities after your own Thanksgiving festivities. **R**

DECEMBER

VL DEC. 4-6; VILLA LOUIS, PRAIRIE DU CHIEN Victorian Home for the Holidays

These special tours include a visit to the Dousman parlor for a Christmas recital on the restored 1879 Steinway Centennial D. piano. **R**

WH DEC. 5-6; WADE HOUSE, GREENBUSH A Wade House Christmas

Guests will experience the magic of a mid-19th-century Christmas celebration at the Wade House stagecoach hotel.

OWN DEC. 5-6; OLD WORLD WISCONSIN, EAGLE An Old World Christmas

Join us for a 19th-century holiday celebration featuring Christmas tales, spirited performances, horse-drawn bobsled rides, an 1800s Santa and more!

OWN DEC. 5-6; OLD WORLD WISCONSIN, EAGLE Old World Foundation's Scottish Holiday Dinner

The annual Ethnic Holiday Dinner celebrates traditions and customs of early settlers in Wisconsin. **R**

OWN DEC. 5-6; OLD WORLD WISCONSIN, EAGLE Old World Holiday Breakfast

Begin your visit with a hearty holiday buffet, meet Father Christmas, and enjoy a special holiday performance. **R**

WH DEC. 12-13; WADE HOUSE, GREENBUSH A Wade House Christmas

Guests will experience the magic of a mid-19th-century Christmas celebration at the Wade House stagecoach hotel.

OWN DEC. 12-13; OLD WORLD WISCONSIN, EAGLE An Old World Christmas

Join us for a 19th-century holiday celebration featuring Christmas tales, spirited performances, horse-drawn bobsled rides, an 1800s Santa and more!

OWN DEC. 12-13; OLD WORLD WISCONSIN, EAGLE Old World Foundation's Scottish Holiday Dinner

The annual Ethnic Holiday Dinner celebrates traditions and customs of early settlers in Wisconsin. **R**

OWN DEC. 12-13; OLD WORLD WISCONSIN, EAGLE Old World Holiday Breakfast

Begin your visit with a hearty holiday buffet, meet Father Christmas, and enjoy a special holiday performance. **R**

DEC. 19, 8:30 AM-4:30 PM; MEMORIAL LIBRARY, MADISON African American Genealogy

Join this all-day workshop with Thulani Davis to learn how to use history to tell personal stories. **R**

JANUARY

WH JAN. 23, 11 AM-3 PM; WADE HOUSE, GREENBUSH Hearthside Dinners

Enjoy a delicious hearth-cooked meal, prepared with your own hands, in the historic Wade House stagecoach hotel. **R**

LOCATION KEY

BP Black Point Estate, Lake Geneva
262-248-1888 or
blackpointestate.org

CW Circus World, Baraboo
Toll free 866-693-1500 or
circusworldmuseum.org

FC First Capitol, Belmont
608-987-2122 or
firstcapitol.org

HMB H.H. Bennett Studio, Wisconsin Dells
608-253-3523 or
hbbennettstudio.org

MIM Madeline Island Museum, La Pointe
715-747-2415 or
madelineislandmuseum.org

OWN Old World Wisconsin, Eagle
262-594-6301 or
oldworldwisconsin.org

P Pendarvis, Mineral Point
608-987-2122 or
pendarvishistoricsite.org

RS Reed School, Neillsville
608-253-3523 or
reedschoolhistoricsite.org

S Stonefield, Cassville
608-725-5210 or
stonefieldhistoricsite.org

VL Villa Louis, Prairie du Chien
608-326-2721 or
villalouis.org

WH Wade House, Greenbush
920-526-3271 or
wadehouse.org

WHM Wisconsin Historical Museum, Madison
608-264-6555 or
wisconsinhistory.org/museum

Wisconsin Historical Society Wisconsin History Tour
608-212-5497 or
maryjane.connor@wisconsinhistory.org

R Registration required



WISCONSIN
HISTORICAL
SOCIETY

Published Quarterly by the Wisconsin Historical Society
Headquarters Building, 816 State Street,
Madison, WI 53706

SIGN UP FOR THE SOCIETY'S E-NEWSLETTER

Get all the latest Society news, information and upcoming events delivered to your email inbox. The e-newsletter will also point you to popular features on our website including This Day in Wisconsin History. Sign up at wisconsinhistory.org.

30th Star Benefit Antiques Auction

FRIENDS of the Society Seek Donations of Antique Treasures!

THE FRIENDS OF THE WISCONSIN HISTORICAL SOCIETY are currently collecting tax-deductible donations of antiques and vintage items for the 30th Star Benefit Antiques Auction on April 23, 2016 at Old World Wisconsin in Eagle.

Contributions of antiques (more than 99 years old) and vintage items (50-99 years old) will be gathered from across the Midwest. The auction catalog will list the known history of each piece as well as the donor's name, if desired. Tax deductible receipts will be provided.

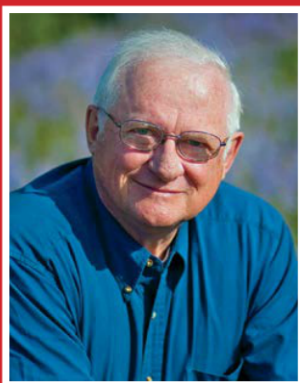
A fourth grant just received from the Wisconsin Antiques Dealers Association continues their commitment as the auction's founding

sponsors. The admissions charged at their October and February antiques shows in Waukesha fund their grant and scholarship programs. See www.WisconsinAntiquesDealers.com to learn more.

For questions about the auction or to make a donation of an antique or vintage item, please contact Riene Wells at 262-363-4700, info@eagle-house.com or Debbie McArdle at 815-575-1272, jjmcard@comcast.net.

To learn more about the FRIENDS of the Wisconsin Historical Society, visit www.friendswisconsinhistory.org/.

JOIN US FOR THE SPECIAL 'FRIENDS AND FAMILY SALE' DEC. 2



Check off this year's Christmas list early by shopping at the Wisconsin Historical Society's one-day-only **"Friends and Family"** sale on **Wednesday, Dec. 2**. The sale will be held from **8:30 a.m. to 5:30 p.m.** in the first floor of the Society's headquarters building, **816 State Street, Madison, Wis.** (across from UW's Memorial Union). There will be Wisconsin Historical Society Press books from authors such as **Jerry Apps, Michael Perry** and **Kathleen Ernst**; including some autographed copies, select historical images prints from our archives and Wisconsin Historical Society memberships. Everything will be priced at **40% off** retail! A special autographing appearance by celebrated rural storyteller and top-selling author **Jerry Apps** will be held from noon to 1 p.m.





WISCONSIN
HISTORICAL
SOCIETY

Columns

THE NEWSLETTER *of the* WISCONSIN HISTORICAL SOCIETY

IN THIS ISSUE



- 6** National History Day
Student's Journey with
the Normandy Institute



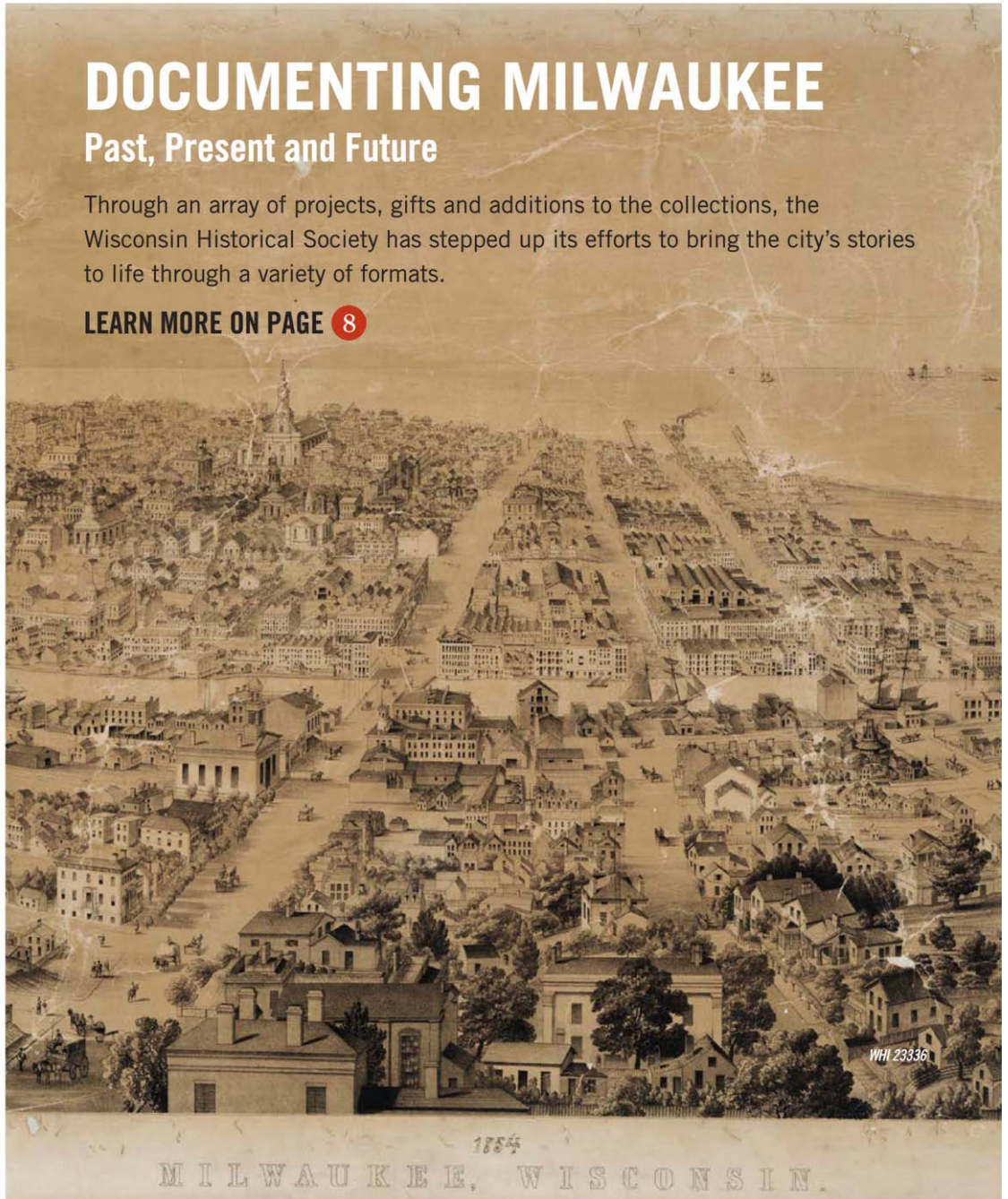
- 13** Gubernatorial Portrait
Gallery Adds Scott
McCallum
- 2** Director's Letter
- 3** Upcoming
Member Events
- 5** Respect for the Past and
a Vision for the Future
- 7** Recent Additions,
State Register of
Historic Places
- 10** What's on Our Bookshelf
- 11** Hercules L. Dousman
- 14** Events Calendar

DOCUMENTING MILWAUKEE

Past, Present and Future

Through an array of projects, gifts and additions to the collections, the Wisconsin Historical Society has stepped up its efforts to bring the city's stories to life through a variety of formats.

LEARN MORE ON PAGE 8



DIRECTOR'S LETTER



ELLSWORTH H. BROWN
The Ruth and Hartley Barker Director

Columns

KARA O'KEEFE, EDITOR

Published quarterly by the Wisconsin Historical Society, with one special issue in November, and distributed to members as part of their dues. Full membership levels begin at \$55 for individuals and \$65 for institutions (rates subject to change). To join or for more information about membership, visit our website at support.wisconsinhistory.org or contact the Membership Office at 888-748-7479, email membership@wisconsinhistory.org or write to the Membership Office at the address below. Address inquiries about this publication to the editor, *Columns*. Media may reprint any article provided credit is given to the Wisconsin Historical Society and *Columns*. Periodicals postage paid at Madison, Wisconsin, account number 688820. Postmaster, send address changes to:

COLUMNS
Wisconsin Historical Society
816 State Street
Madison, WI 53706

DIRECTOR'S LETTER

A LIGHTED WALL PANEL AT RONALD REAGAN INTERNATIONAL AIRPORT recently caught my attention with the phrase "Making Science Make Sense." This is a Bayer-sponsored initiative that advances science literacy across the U.S. through inquiry-based science learning, employee volunteerism, and public education. Check it out for yourself: makingsciencemakesense.com

When have we seen an advertisement for history or the humanities? This query is not rhetorical: if you have seen one, please tell me what, when and where. I'd like to know.

Seeing the ad can touch nerves of envy and regret: "Why them and not us? Is it something we did or, worse, failed to do and is it correctable? Famously, Henry Ford said "history is more or less bunk." Was he correct or did he just know how to make cars?

The "condition" of history in America and the initiatives to address it are subjects of intense discussion led by a national history organization and, independently, by an *ad hoc* group of history leaders from institutions such as ours.

Reflection on the subject suggests two things: one is that seeking equivalencies between math and science initiatives and history initiatives may not be necessary or useful. Whereas science-related disciplines are particular and to a certain extent formal, history — also an academic subject — is infused into the fabric of our lives, institutions, built environments, families, and communities. Hard to measure, endlessly present. Second and less conspicuous is ample evidence of history's pervasive hold on people. Winston Churchill succinctly rephrased philosopher Hegel's observation and said, "Is the only lesson of history to be that mankind is unteachable?" It may thus be true that history repeats itself, although I prefer Mark Twain's observation that "History doesn't repeat itself, but it does rhyme."

However, on a local plane, I submit the following as antidote to the angst we could harbor:

- A homemade billboard on Highway 14 west of Janesville declared, "Without a heritage, every generation starts over."
- Since the commencement of the Wisconsin Historical Society's historic sites program, 17,694,052 people have visited our dozen museums and historic sites, boosted by more than 300,000 last year.
- Last year a child spent a half day at Old World Wisconsin and later declared it to be "the best day of my life."
- Our website was viewed 2.5 million times last year.
- Our library and archive loaned 957 archival collections and 4,452 books and articles to libraries across the state and country; and it acquired 408 cubic feet of historical manuscripts and 1,154 cubic feet of government records of long-term value.
- We received four major grants totaling \$484,000 last year to provide statewide digital access, management and training for our Wisconsin newspaper collection and for state electronic records.
- Our library served 337,014 visitors in Madison and at the 13 Area Research Center Sites last year.

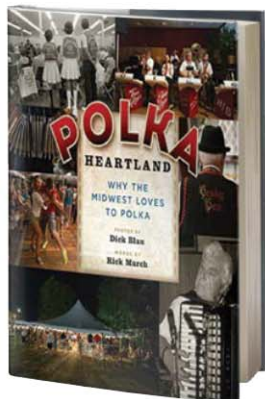
We see a fascination with history in the work of the summer swarm of beloved genealogists and their searches for identity. We see it in the competitive work of 10,000 Wisconsin middle- and high school National History Day students each spring.

So maybe there needs to be a national movement. Or maybe history simply is, everywhere, always. I do know that history is a growth business, and I know with certainty that history is what makes us laugh and cry and what makes coming home, coming home.

EHB

IN APPRECIATION OF YOUR SUPPORT AS A MEMBER, ENJOY THESE EVENTS, PERKS AND ACTIVITIES!

Upcoming Member Events



SATURDAY, FEB. 20
.....

Polka Party
4-6 p.m.
Stevens Point
RSVP by Feb. 17

Celebrate the new Wisconsin Historical Society Press Book, "Polka Heartland: Why the Midwest Loves to Polka" with live music, dancing, a book signing and more. Learn more at wisconsinhistory.org/calendar.



RESCHEDULED FOR:

THURSDAY, JUNE 23
.....

Old World Wisconsin
40th Anniversary Celebration
Eagle

WISCONSIN HISTORY TOUR SHARING STORIES ONE COMMUNITY AT A TIME

2016
TOUR STOPS

HUDSON: January-March

OSHKOSH: April-May

ASHLAND: June-July



NEW Bonus Member Benefits This Year!

- FREE admission (for all membership levels) to 12 historic sites and museums during regular operating hours
- Bonus one-time-use historic site and museum guest passes
- 10% discount on all Society ticketed events, webinars, workshops and conferences
- Electronic offerings, including the new *Wisconsin Magazine of History* e-publication

Member Appreciation Month: May

In May, we celebrate your membership support with a month of special offers and extra benefits exclusively for you. Look for more information in the next issue of *Columns* and via email.



WISCONSIN
HISTORICAL
SOCIETY

For more information or to RSVP: Email membership@wisconsinhistory.org,
call 888-748-7479 or visit wisconsinhistory.org





SCHOOL TOUR SUBSIDY PROGRAM OPENS OLD WORLD WISCONSIN TO THOUSANDS OF STUDENTS

"Thank you for being so generous and paying for our field trip. I learned so much that day. My favorite thing was making the schnitzel (wood shaving from the German schnitzelbonk) and the school house. That day we saw Valentine the cow, pigs, baby pigs and chickens. Sincerely, Lizeth"

TWO THOUSAND FIFTEEN WAS A VERY SPECIAL YEAR for many classes visiting Old World Wisconsin! Travel costs can make coming to Old World Wisconsin impossible for many schools. To address this situation, the Old World Foundation applied for and received a grant from the Potawatomi Hotel and Casino's Miracle on Canal Street program. Funding from this program, as well as from the Foundation, helped 2,600 students come to visit Old World Wisconsin, many for the first time. Schools from Beaver Dam, Janesville, Juneau, Kenosha, Madison, Milwaukee and Racine were awarded funding for their trips. Many schools sent thank-you notes like the ones shown here.

To view more of the thank-you letters received, visit wisconsinhistory.org/oww-thank-yous.

RESPECT FOR THE PAST AND A VISION FOR THE FUTURE OF MILWAUKEE

Noted Real Estate Developer Is a Leading Sponsor of the Society's Milwaukee Industrial Building Survey

BARRY MANDEL is one of the most forward-thinking people in Milwaukee.

For nearly three decades, he has envisioned ways to develop vibrant communities where others saw unattractive properties and forbidding risks.

As president of Mandel Group, Inc., a premier Milwaukee multi-family residential and commercial property development firm, Mandel has worked hard and honed his ability to recognize key opportunities. His capacity to see the potential in a proposal led him to enthusiastically support an important new Society initiative: the Milwaukee Industrial Building Survey.

Jim Draeger, the State Historic Preservation Officer and head of the Society's Historic Preservation and Public History Division, conceived of the survey as an efficient and comprehensive means to assess the historic value and development potential of the city's unused industrial buildings. The goal is to identify buildings that are historically significant and determine which may be eligible for federal and state historic preservation tax credits. These two programs can each return 20 percent of the cost of rehabilitating historic buildings to owners as income tax



Barry Mandel

credits. Redevelopment plans must meet established preservation guidelines. The result of this project: important stories connected with these buildings will be preserved — stories that span generations and celebrate Milwaukee's industrial heritage — and developers may take advantage of the incentive

to maintain the buildings' architectural and historical character.

Mandel's desire to encourage historic redevelopment and his financial support of the survey are deeply appreciated and getting results. As Mandel told Jim Draeger, "I am supporting this project because it is an economic development project, and I believe in the future of this city." In the past six months, with Mandel helping to lead the way, more than 20 additional developers, realtors, bankers and other champions of Milwaukee's history contributed their support. Funding is complete and the survey has begun. A full report of the survey's findings will be completed by year's end.

Mandel truly strives to be a good neighbor to everyone in Milwaukee. His vision for the city goes way beyond simple considerations of cost per square foot and financing. Mandel invests his incomparable creativity,

problem-solving skills, business acumen and energy to shape and enhance people's day-to-day activities and improve the quality of life in Milwaukee. His commitment to city residents is evident in the parks and other urban green spaces his company builds; in investments and philanthropic donations that boost opportunities for minority contractors, tradespeople and real estate professionals; and in green roofs and other sustainable elements that are integral to the design of his projects.

All of these efforts are woven together and clearly intended to create a seamless and vibrant urban fabric. Barry Mandel can be justly proud that his weaving makes Milwaukee a better and more hopeful place to live. The Society is grateful for his partnership and that historic preservation of the city's built environment is an integral part of his design.

The Milwaukee Industrial Building Survey was made possible through lead gifts from Cardinal Capital Management, Mandel Group, Inc., Phoenix Investors, LLC, Wangard, and the Wisconsin Preservation Fund. Generous contributions were also provided by Alexander Company, the Ambassador Hotel, Gorman & Company, Keystone Development, Sunset Investors, Van Buren Management, Inc., and Wisconsin Redevelopment. Additional support came from Atlantic Realty Partners, Endeavour Corp, General Capital Group, CD Smith, Ogden, PACE Equity, Phelan Development, Pieper Properties, Schlitz Park, TMB Development Co. and WIRED Properties.

You Can Make Wisconsin's History Your Legacy

Please consider joining the Robert B.L. Murphy Legacy Circle and making a lasting commitment to share our state's rich heritage.

Legacy gifts have always played a crucial role in shaping the Society's future. We would be deeply grateful if you added your legacy of support and helped to continue the long record of innovation that has established the Society as one of the foremost historical institutions in the nation.

Of the many types of estate gifts, bequests and beneficiary designations are the easiest and most common options. However you wish to give, a modest investment of your time to include the Society in your estate plan

will create a remarkable and enduring impact. Your generosity will help sustain the excellent programs and services that millions of history lovers enjoy each year — and you'll enhance our ability to connect people to history for generations come.

For information about planned giving, please contact Linsey Laufenberg at 608-264-6540 or email plannedgiving@wisconsinhistory.org. If you have already named the Society as a recipient in your estate plan and are not a Robert B.L. Murphy Legacy Circle member — please notify us! We would be delighted to thank you personally and offer you all the benefits of membership.

NATIONAL HISTORY DAY STUDENT'S JOURNEY WITH THE NORMANDY INSTITUTE

By Maggie Holtgreive, Reagan IB High School, Milwaukee Public Schools

The Normandy Institute is a unique program sponsored by National History Day, an academic program focused on historical research, in which student/teacher teams study the events of D-Day and World War II.

In the fall of 2014, I approached Julia Brunson, a junior at Reagan IB High School (Milwaukee, WI), and asked if she would be interested in applying for the Normandy Institute. Julia agreed. We applied and were beyond thrilled when I received a phone call from Washington, D.C., accepting us to the program.

Soon after our acceptance, a box of books was mailed to us and we began our readings as well as taking part in online discussions with other participants. One of our first tasks was to identify a soldier buried at the American Cemetery in Normandy, France, and research his story. Julia and I knew we wanted a local soldier and went through the names listed on the American Battle Monuments Commission website for a Milwaukee soldier. We found a few and settled on one: Staff Sgt. Eugene Mlot.

It was not easy finding information on Mlot. We discovered that he lived on Milwaukee's south side in the heavily Polish neighborhood of Polonia. From census records we learned that by 1940 he had graduated from high school, had an older sister and lived with his mother. His father was deceased. We do know that his father came through Ellis Island while immigrating to the United States about 10 years prior to the birth of Mlot, followed by his mother, both from Poland.

Beginning with online research and moving on to the National Archives at College Park in Maryland, we discovered that Mlot registered for the military after Pearl Harbor and was assigned to the 93 Bombardment Group (Heavy). Mlot flew in a B-24j Liberator named the Victory Belle, and was a gunner. His squad flew many missions, including bombing a factory in Berlin while facing heavy antiaircraft fire. They witnessed the planes of their fellow soldiers drop out of the sky only to be sent out on another 10-hour mission the very next day. While usually a left wing gunner, on June 24, 1944, Mlot was in the nose gunner position. On this day, his plane encountered heavy German flak and was shot down west of Paris over Dreux, France. Mlot was not able to exit the plane and died. He was barely 20 years old.

After conducting research at the National Archives at College Park we eventually made our way to Normandy with other program participants to see Mlot's grave and see firsthand some of the places that had ties to World War II. On our last day in Normandy, Julia presented a eulogy for Staff Sgt. Mlot at his grave site where she acknowledged his sacrifice and those of so many other young Americans during World War II. To learn more about Mlot and our journey through the Normandy Institute and to see Julia read her eulogy, please go to <http://57059282.nhd.weebly.com>.



Eugene Mlot is pictured here (fourth from the left) with fellow crew members from Victory Belle, the B24.



Eugene Mlot's grave in the American Cemetery in Normandy, France.



Eugene's dog tags we found at the National Archives II in College Park, MD.



Julia relaxing by the English Channel after presenting her eulogy for Staff Sgt. Mlot.

For more information on National History Day visit
www.wisconsinhistory.org/NHD

Recent Additions

STATE REGISTER OF HISTORIC PLACES

Allouez Water Department and Town Hall Building

**Allouez, Brown County; Architect: Foeller, Schober, Berners & Jahn;
Engineer: McMahon Engineering Company; Construction date: 1947**

The Allouez Water Department and Town Hall was constructed in 1947 in the Colonial Revival style. The Colonial Revival style, while generally popular in the mid-20th century, was an unusual design choice for an Allouez municipal building and is therefore distinctive in the community. The largest civic building constructed in Allouez to date, this was the long-standing center of municipal government. Municipal offices and meeting rooms were located here as Allouez transitioned from the township to the village form of government. As the location of the municipal water department, this building was the center of vital services for the growing community until 1967, when governmental offices and water utility services were moved elsewhere.



Rudolph Lueder 13-Sided Barn

Plymouth, Sheboygan County; Construction date: 1916

This barn was constructed in 1916 by Rudolph Lueder, a dairy farmer and first-generation son of German immigrants. The farm is owned by his descendants and continues as a dairy farm. Round barns were developed out of an interest in efficient design; cows were kept in close proximity to feed, bedding and milking equipment, easing the workload for farmers.

The barn incorporated advanced building techniques including an air circulation system that pulls cool air from the base and expels warm air through the cupola. The thick double brick wall with an integrated airspace helped insulate the lower level of the barn. The geometry of the barn is also unique, with its 13 sides, and the scale is impressive, with a roof spanning 85 feet and towering more than 68 feet above grade. The barn held 48 cows in stanchions in the lower level and enough hay and feed for all of them simultaneously. The Lueder Barn is one of the last centric barns in the state of Wisconsin that is still used for its original purpose as a dairy barn.



Whiton-Parker House

Janesville, Rock County; Construction date: 1852; addition in 1927

This home was constructed in 1852 in the Greek Revival style and altered in 1927 incorporating the Colonial Revival style in its side addition, dormers and main entrance. Although it is a beautiful house, it is the significance of two owners that bring exceptional distinction to this property. Edward Whiton, pioneer resident of Janesville and early legislator, constructed this house and lived here during the peak of his legal career. Whiton contributed to the formation of the judicial branch of state government in Wisconsin and influenced the development of American legal institutions in the early statehood period. Subsequent resident Kenneth Parker was one of the most important 20th-century industrialists in Janesville. He oversaw the development of the domestic and international growth of the Parker Pen Company, which became synonymous with the highest-quality writing implements throughout the world.



Delavan Downtown Commercial Historic District

Delavan, Walworth County; Construction dates: 1871-1962

The Delavan Downtown Commercial Historic District contains an architecturally important collection of buildings that reflect a century of commercial and civic architecture. Architectural styles including the Italianate, Commercial Vernacular, Neoclassical and Contemporary styles lend a distinctive appearance to the district, making it easily identifiable as a traditional downtown and retaining the architectural character of the 19th and 20th centuries. The history of commerce in the community is also represented here. The district reflects the fact that this is the traditional and long-standing center of commercial activity in the city. Located along its distinctive vitrified brick street, historic retail buildings, banks, an office building, a theater, a post office and a library continue to offer the services and amenities to support a thriving community.



OTHER PROPERTIES LISTED: Allouez Pump House, Allouez, Brown County; Delavan Water Tower Park Historic District, Delavan, Walworth County; Equitable Fraternal Union Building, Neenah, Winnebago County

Documenting Milwaukee

By Amanda Wegner

From the Algonquian word *Millioke* meaning, among other things, “beautiful,” Milwaukee offers a rich, beautiful trove of history, past, present and future.

Through an array of projects, gifts and additions to the collections, the Wisconsin Historical Society has stepped up its efforts to bring the Milwaukee's stories to life through a variety of formats. Here's a look at some of the projects that the Society has been working on.

History as it happens: Working at the Water Council

For the first time in its nearly 170-year history, the Wisconsin Historical Society has “a desk in the city of Milwaukee.” That desk belongs to Kristen Leffelman, the Society's field services representative at the Water Council, a nonprofit that was founded in 2009 and aligns the regional freshwater research community with water-related industries to find solutions to critical global water issues.

“The Society always benefits from documenting organizations, movements or initiatives with the potential to be history makers in real time” says Leffelman, who started in October 2014. “That the Society is already here to document the Water Council means that we can preserve a much fuller picture of the organization's origins and initiatives while institutional memory is still fresh and be ‘on the ground’ for this exciting chapter of Milwaukee's history.”

Leffelman's position combines archival consultation, outreach and historical research; one day may be spent doing records management, while another is spent on a new traveling exhibit, “Water Shapes Wisconsin,” which launches in March 2016.

“Our partnership with the Water Council allows us to enhance access to the Society's diverse public history programs and resources across southeastern Wisconsin, building awareness of the Society's mission and offerings throughout the state,” says Leffelman.

Building a living record: Vel Phillips

Vel Phillips, says Emil Hoelter, “is a person through whom many aspects of life in Milwaukee, and beyond in Wisconsin, can be glimpsed.”

As someone with an intimate view of her life, Hoelter, the processing archivist for Phillips' papers, knows this well.

Velalea “Vel” Phillips is a prominent figure in the city's and state's history, having played a key role in developing Milwaukee's open housing legislation, advocating for Milwaukee's black community, being the first African American woman to graduate from UW-Madison Law School and much more.

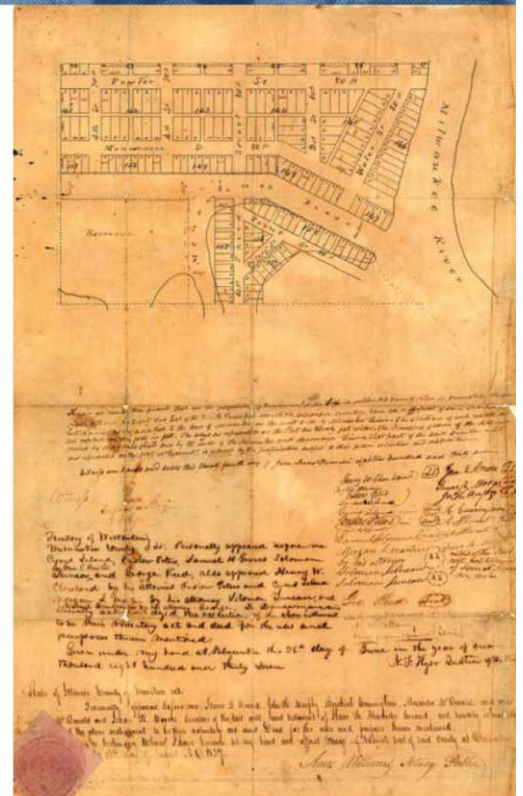
The Society acquired her papers and materials in 2013, and with three part-time assistants, Hoelter and the team have worked for the past 10 months to organize these materials and make some of them public.

“My role is to arrange the materials she has donated to us — her correspondence, records of her offices, photographs, audio recordings and so on — in a way that will make them understandable to the researcher who wants to use her collection,” says



Vel Phillips gets sworn in Jan. 3, 1979.

WHI IMAGE ID 118333



Despite the sheer number of maps Krueger has seen, she has some favorites, including this early map of Milwaukee. “This early manuscript map of the city is a great example of a plat map, showing property lots,” says Krueger. It is signed by Solomon Juneau, one of the three founding fathers of the city. WHI IMAGE ID 4635

Hoelter. “This is more detailed work than some collections would require or merit, but in this case, it is well worth the effort.”

Hoelter and his team are also digitizing a majority of the massive manuscript collection as well as other portions of the collection that include photographs and audio recordings, with plans to include them on the Society's website. A major part of this project's funding is from the Greater Milwaukee Foundation and a new endowment by retired UW historians Allan G. Bogue and Margaret Beattie Bogue.

The scripts for and recordings of Phillips' weekly radio address, “Tell Vel,” are among Hoelter's favorites.

“In looking at [the scripts], I can see her attention to detail and desire to express herself thoughtfully and articulately when discussing her work,” says Hoelter.

the Past, Present and Future

"In particular, her series of addresses discussing details of open housing are fascinating to read."

Lying in Wait: Milwaukee's maps

Because they require specialized cataloging, maps are usually among the last materials to be added to an online catalog. But the Society has put a significant dent in cataloging and digitizing the tens of thousands of maps and atlases in its collection.

"The average time to fully digitize a map is one hour," explains map librarian Susan Krueger. The Society has a collection of more than 12,000 sheet maps, plus 5,000 atlases and 12,000 Sanborn maps, and thanks to generous funding by the Caxambas Foundation, Krueger and an assistant have been working for five years to catalog the map collection. At present, 5,529 works totaling 14,122 pages are now online.

"The primary reason for us to create online collections is to allow the Wisconsin Historical Society to more widely share its rich resources with the people of Wisconsin," says

Krueger. "Maps in particular are a good choice because they do not circulate, due to their oversize and fragile nature, so the only way for a person in Milwaukee to access our maps used to be coming to Madison in person."

Arts Acquisition: The Layton Art Collection



Frederick Layton WHI IMAGE ID 116941

Frederick Layton was one of the most important art collectors in Wisconsin and played a major role in the creation of Milwaukee's meatpacking industry. The Society is happy to

bring the Frederick Layton Family Papers and Photographs into its archives.

"The Wisconsin Historical Society's Archives seeks to document all aspects of life in Wisconsin, including the arts, so we were naturally pleased to accept



Layton Art Gallery

WHI IMAGE ID 116984

a collection that provides insights into someone as significant in Wisconsin arts history as Frederick Layton," says Jonathan Nelson, collection development archivist.

Layton's collection is one of two that formed the core of the original Milwaukee Art Museum collection. Containing more than 130 family documents and photographs, the collection originally was given to the Layton Art Collection by three members of the Bemm family, who are the grandchildren of Frederick Layton's niece Grace Hayman Fowle. In turn, Eric Vogel and the Layton Art Collection board donated the collection to the Society, where archives staff arranged, described and cataloged the materials before sending the collection to the Milwaukee Area Research Center. Society staff also scanned and cataloged 28 photographs that are now available on the Society's website.

Nelson's favorite items in the collection are the four volumes of the Layton Art Gallery opening day catalogs from 1888.

"These volumes are in wonderful condition and contain an image and description of each piece of art in the Layton Gallery at the time it first opened, which will be very useful for researchers," Nelson says.

The Society is pleased to expand its work to document the rich history of Millioke, the beautiful city on the big lake and an epicenter of commerce, culture and history in the state of Wisconsin, now and into the future.



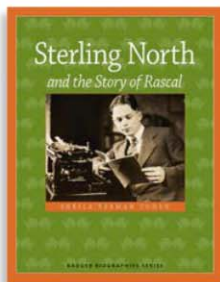
Bird's-eye views are an aesthetically pleasing combination of art and cartography, says Krueger. Though features are sometimes exaggerated to make a city look good, "Views such as this one are great historic snapshots. It's fun to gaze at them and try to pick out what buildings are still standing and familiar."

WHI IMAGE ID 23336

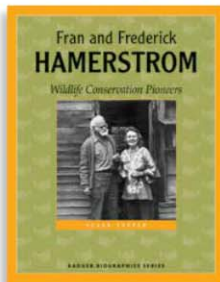
New Bios Share Badger State Stories with Young Readers

This spring, the Wisconsin Historical Society Press wraps up its 28-volume Badger Biographies Series for young readers with three new books that tell the life stories of Wisconsinites, including best-selling author Sterling North, pioneering conservationists Fran and Frederick Hamerstrom and Wisconsin lumberjack John Nelligan. (Find a list of the entire series of Badger Biographies at www.wisconsinhistory.org/whspress. E-book editions of Badger Biographies are also available.)

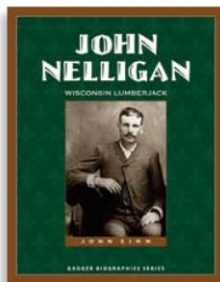
THE MAN BEHIND THE RACCOON: Learn how childhood adventures inspired a Wisconsin writer to pen one of the best-selling children's books of all time, "Rascal," in **"Sterling North and the Story of Rascal"** by Sheila Cohen. Rascal was the name of North's childhood pet, a raccoon he befriended in the early 1900s after his mother died of pneumonia. North and Rascal enjoyed many adventures, from camping and fishing to racing the streets of Edgerton, Wis., on North's trusty blue bicycle. Their friendship inspired North's beloved children's book, one of many books the award-winning author wrote during his celebrated career.



A PIONEERING COUPLE'S PRAIRIE CHICKEN PROJECT: Discover the husband-wife team of conservationists from Wisconsin who worked to save the greater prairie chicken from extinction and helped establish new ways for humans to think about habitat conservation in **"Fran and Frederick Hamerstrom: Wildlife Conservation Pioneers"** by Susan Tupper. As students of famous Wisconsin naturalist Aldo Leopold, Fran and Frederick shared their passion for conservation with many future scientists for more than 30 years.



A LUMBERJACK WRITER: Experience the adventures and tough life of a lumberman who was working during the heyday of the Wisconsin lumber industry in **"John Nelligan: Wisconsin Lumberjack."** Author John Zimm uses Nelligan's own words — written in his letters and journals housed at the Wisconsin Historical Society — to help document the lumberjack life and Nelligan's story. Born in 1852, Nelligan rose through the lumberjack ranks, starting out as a humble laborer and working his way up to foreman.

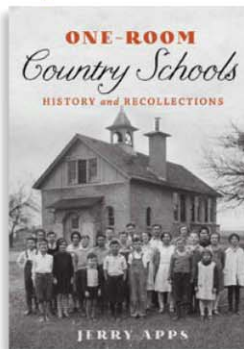


Jerry Apps returns to Garden Expo Feb. 13-15.

Fall in Love with History at Garden Expo 2016!

This Valentine's Day Weekend, Feb. 12-14, the Wisconsin Historical Society Press will display many of its newest titles — including the Jerry Apps book for nature lovers, **"Whispers and Shadows: A Naturalist's Memoir"** — at Wisconsin Public Television's Garden Expo 2016, at the Alliant Energy Center in Madison. An array of history books — on gardening, the environment, agriculture and more — will be showcased in the Society Press booth. As in years past, author Jerry Apps will be speaking at special Garden Expo events, including a 2:15 p.m. discussion on land stewardship with stories from Apps's "Whispers and Shadows," an in-booth signing from 3:30 to 4 p.m. on Feb. 13, and a special Feb. 14 screening of the Wisconsin Public Television documentary based upon "Whispers and Shadows," titled "The Land with Jerry Apps," at 1 p.m. The Sunday event will feature commentary from Jerry Apps and time for audience questions. For more information on attending Garden Expo, visit www.wigardenexpo.com.

Explore One-Room Schools with Jerry Apps



From 1791, when the first school was established in what is now Wisconsin, to the consolidation of rural school districts in the 1960s, the history of Wisconsin's one-room schools has been one of growth and change. In a new Society Press edition of "One-Room Country Schools: History and Recollections," celebrated rural storyteller Jerry Apps brings this history to life through his own vivid recollections and with stories told to him by students and teachers who populated small country schoolhouses across the state. From the organized chaos of teaching disparate age

groups in one room to tales of recess, holiday programs and classroom mischief, these stories provide a lively portrait of what it was like to be educated in the same room as one's siblings. More than just memories, the reprinting of this Apps classic continues to provide insight into the value of the highly localized and more personalized educational practices of the past. An e-book edition is also available.

MEMBERS
SAVE ON
BOOKS

Society members receive a 10% discount on all book orders.

For more information on books published by the Wisconsin Historical Society Press, visit wisconsinhistory.org/whspress.

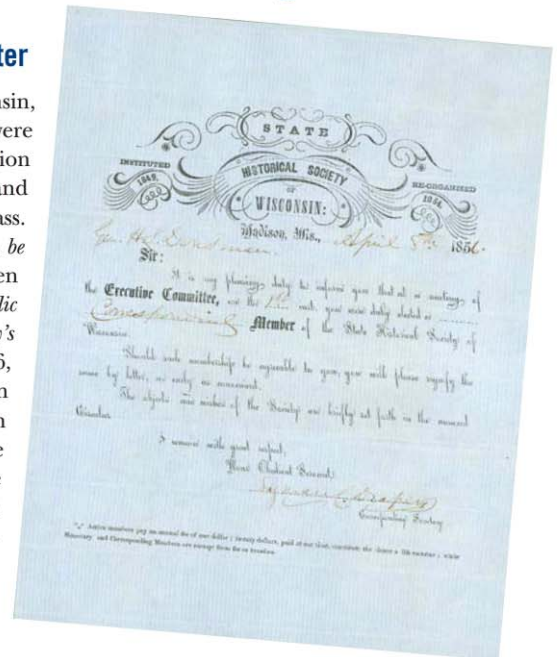
BEHIND THE SCENES AT THE SITES



Hercules L. Dousman,

State Historical Society of Wisconsin Corresponding Membership Letter

ON APRIL 1, 1856, the Executive Committee of the State Historical Society of Wisconsin, as it was known at the time, met and voted on many matters. These proceedings were led by Lyman Draper and the matters covered at this meeting include the acquisition of letters, manuscripts and books from early Wisconsin leaders, businessmen and politicians, including items from Gov. Dodge, Henry Schoolcraft and Gov. Cass. Other business included a vote that *"The following pioneers and public men of our State, be respectfully requested to furnish their portraits for the Picture Gallery."* On this list of fourteen men was Gen. H.L. Dousman. Also voted on was *"That those pioneers and early public men of Wisconsin, who have already or hereafter, furnish their portraits in oil for the Society's Picture Gallery, shall be constituted Life Members of the Society."* A letter dated April 8, 1856, from Lyman Draper to Hercules Dousman includes the request upon Mr. Dousman to have his portrait painted by the well-known Milwaukee artist Samuel Marsden Brooks, and also included with the letter was Mr. Dousman's membership to the State Historical Society of Wisconsin. Indeed the painting was done, but the one painted by Brooks never left Prairie du Chien. Mr. Dousman appears to have been quite fond of it and refused to send it to Madison. Another artist was commissioned by the Society. Today the Brooks portrait hangs in the dining room of Villa Louis. Learn more about Villa Louis at www.villalouis.org.



HENRY HAMILTON BENNETT served in Company E of the 12th Wisconsin Volunteers during the Civil War. Injured by an accidental discharge of his own gun, he was mustered out of service in 1864. Returning to Kilbourn City, Bennett took up photography as his profession and went on to become the man who would make the Dells famous.

Proud of his Civil War service, H.H. Bennett was active in the Grand Army of the Republic after the war. He assembled a shadow box of items he acquired during his service. The box contains a sketch titled "Picket Guard" by Bennett's brother Edmund Bennett, Bennett's hospital registration, his day pass for Memphis dated May 8, 1863, a tree leaf from Vicksburg, a feather said to be from Old Abe the War Eagle, a piece of wood from Libby Prison, several belt buckles and bullets from Vicksburg and other various battlefields, early correspondence from GAR members, and a few other curiosities. To learn more about HH Bennett Studio please visit hhbennettstudio.wisconsinhistory.org.



Images from the annual member meeting of the Wisconsin Historical Society.

Get Connected to Your Local History

IN 1896, WISCONSIN HISTORICAL SOCIETY director Reuben Gold Thwaites was inspired to create a local history program as one of several initiatives to commemorate the upcoming 50th anniversary of Wisconsin's statehood. In 1898, he traveled by train to Green Bay and Ripon to officially recognize the first local "auxiliaries." Wisconsin's local history affiliate program has grown to include a roster of 390 county, local and specialized historical organizations. The Society assists communities, organizations, and individuals around the state in preserving and sharing their history.

To learn what local historical societies, museums and the public want local history organizations around the state, the local history division within the Society conducted a survey. From the results, there was expressed interest in seeing the results of the survey, and many people had questions about how and where to find more information about resources available through the Society. In response to feedback, the Local History-Field Services Program developed a **Local History Fact Sheet**.

Other resources that are available to local affiliates include:

INTERNSHIPS: The public history program at the University of Wisconsin-Eau Claire partners with local historical organizations to place students in internships in Wisconsin and beyond. The UW-Eau Claire History Lab program offers students and community partnerships an opportunity to collaborate on many different types of projects, including exhibits, public programs, historic preservation research and much more. For information on how to connect with the public history program, contact Janet Seymour.

MINI-GRANTS: A partnership of the Wisconsin Council for Local History and the Society, grants of up to \$700 are awarded for collections care projects. Contact your field services representative for application information. Applications are due June 3, 2016.

ANNUAL REPORTS: Affiliates are required to file an annual report with the Local History-Field Services office. Contact Amy Norlin at 608-264-6579 or amy.norlin@wisconsinhistory.org

- For questions about library resources or materials email asklibrary@wisconsinhistory.org
- For questions about archive resources or materials email askarchives@wisconsinhistory.org
- For preservation and conservation resources for Cultural Collecting Institutions visit wisconsinhistory.org/conservation.
- To view the survey summary and to find more information on local history resources visit wisconsinhistory.org/LocalHistory.

PAPERLESS E-VERSION OF COLUMNS NOW AVAILABLE

We invite you to view the new e-version of *Columns* at wihist.org/societynewsletters.

To sign up to receive the paperless e-version of *Columns* only, visit support.wisconsinhistory.org/ecolumns.

If you would like to receive both paper and electronic copies, sign up to receive emails from the membership office at wihist.org/memberemails.

GOVERNORIAL PORTRAIT COLLECTION ADDS Scott McCallum

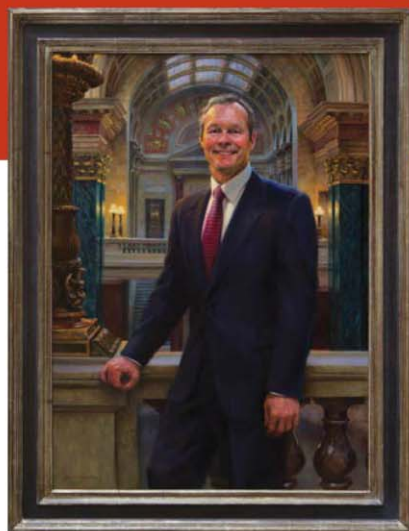
BY STATE STATUTE, THE WISCONSIN HISTORICAL SOCIETY serves as custodian of the official series of the portraits of the governors of Wisconsin. At the time the Society began its "Picture Gallery" in 1854, it expressed "an anxious desire to secure the portraits of those who have presided as governors over Wisconsin," which "is likely to meet with the most gratifying success."

Recently, the Wisconsin Historical Society experienced a new success when it added its latest gubernatorial portrait to the collection. In 2013, the Wisconsin Arts Board selected internationally award-winning artist William Suys of Delafield to paint the official portrait of Scott McCallum, who served as governor from 2001 to 2003. The Society commissioned the work with funds provided by Governor McCallum's supporters, including Mr. and Mrs. David Beightol, Mr. and Mrs. Russell Darrow, Mr. and Mrs. Ted Kellner, Mr. Gene Kussart, Ms. Helen Johnson-Leipold and Mr. Craig Leipold, Mr. and Mrs. Quinn Martin, Mr. and Mrs. Douglas McCallum, Mr. and Mrs. Jack McKeithan Jr., Ms. Sandra Mills, Ms. Ann Murphy and Mr. Patrick Murphy, Mr. Mark Petri, The Honorable Thomas Petri and Mr. and Mrs. James Schloemer.

Suys remarked that "the honor of painting the portrait of a notable is very special to me, and one I do not take lightly. Therefore, while it's always my intent to create a painting of timeless depth and

quality, my goal with each commissioned portrait is to make a hero of both the subject and those responsible for selecting me to do the honor." When asked to comment about Governor McCallum's portrait, Suys shared that "to achieve that goal with this piece, I utilized the fabulous interior of our State Capitol to enhance the aura and presence of our former governor, while also celebrating his fond memories of serving in our State Senate."

The portrait completes the Society's representation of all 46 former Wisconsin state and territorial governors and was recently featured in an issue of the magazine *Fine Art Connoisseur*, along with a full feature on the artist in *Southwest Art* magazine. Currently, the Governor McCallum portrait is on loan to the office of Senator Richard Gudek in the State Capitol.



TELLING YOUR STORIES: AN AFRICAN AMERICAN GENEALOGY WORKSHOP

THE LIBRARY ARCHIVES has held a genealogical workshop focusing on African American genealogy each year since 2013. The guest lecturer this year was Thulani Davis, author of "My Confederate Kinfolk: A Twenty-First Century Freedwoman Discovers Her Roots" (2006). It was a day of sharing stories and great conversation.

Ms. Davis started the day by discussing the various strategies of researching her family stories over many years that led to publishing her book. She emphasized the importance of oral history within the family and the fact that researchers need to look at the history of the white families that were connected to the black families in order to identify more stories and resources. She included many great stories of her experiences in archives collections where the dusty volumes "proved that her ancestors had been there." It also included stories of visiting a cemetery at dusk in a rural area of the south that turned out to be an adventure. She located a journal, a rare find in genealogical research, at Duke University that was written by an ancestor and led her to even more family



Thulani Davis

stories. Ms. Davis provided many more avenues for the audience to pursue in their own research and provided wonderful stories of connecting with distant cousins and many eye-opening moments in her journey.

The successful writer shared some of the research that she is currently pursuing regarding networks and support systems of African-Americans after the Civil War. Railroad lines and church affiliations were core to building up and protecting the black communities within the south during Reconstruction. She told many

stories of the network that the black community had built over time to encourage voting, provide protection from violence that was found in all of the southern states and create what became known as the black belt. She provided invaluable examples to show the importance of using maps, books and photos to see the full picture in history.

The last part of the workshop entailed one-to-one discussions between the audience members and Ms. Davis. The audience provided information about their projects and Ms. Davis provided advice on more resources and strategies to use that would advance their research. The last lecture of the day continued that discussion and provided more information on breaking down brick walls in genealogical research.

Planning for autumn 2016 programming is underway. Watch for notices on all workshops and webinars by going to our website, www.wisconsinhistory.org. If you have further questions, please contact Lori Bessler, Outreach Coordinator for the Library Archives. Lori.Bessler@wisconsinhistory.org

Events

WISCONSIN HISTORICAL SOCIETY EVENTS



Detail from a piece in *Contemporary Canvases of Native Nations*.

EXHIBITS

FEB. 19, 2015-MARCH 31, 2016; NORTHERN GREAT LAKES VISITOR CENTER, ASHLAND

Father of the Park: Gaylord Nelson and the Apostle Islands National Lakeshore

An exhibit featuring Senator Nelson's efforts to create public access to the Apostle Islands.

WHM THROUGH FEB. 13, 2016; WISCONSIN HISTORICAL MUSEUM, MADISON

Wisconsin Goes Hollywood
Visit this exhibit that features famous Wisconsinites who've made their way to Hollywood along with their famous artifacts.

WHM THROUGH APRIL 2, 2016; WISCONSIN HISTORICAL MUSEUM, MADISON

Contemporary Canvases of Native Nations
Celebrate Native artists of Wisconsin and their rich traditions in this exhibition developed by the Wisconsin Historical Museum's 2015 Exhibit Interns.

APRIL 4-MAY 8; WRISTON ART CENTER GALLERIES, APPLETON
The Archive as a River: Paul Vanderbilt and Photography

Visit the exhibit that celebrates the work of Paul Vanderbilt, an amazing contributor of photography for the Wisconsin Historical Society.

HUDSON

JAN. 6-MARCH 30 HUDSON AREA LIBRARY, HUDSON

Wisconsin History Tour
Come and see an exhibit of historic photographs, documents and stories about the Hudson community. Join us for FREE events Feb. 23-26.

OSHKOSH

APRIL 5-MAY 30; OSHKOSH PUBLIC LIBRARY, OSHKOSH

Wisconsin History Tour
Come and see an exhibit of historic photographs, documents and stories about the Oshkosh community. Join us for FREE events April 5-8.

FEBRUARY

WHM FEB. 2, 12:15-1 PM; WISCONSIN HISTORICAL MUSEUM, MADISON

History Sandwiched In: Genealogy and the Wisconsin Historical Society
Society reference librarian Lori Bessler provides tips on using the knowledge of the staff at the Society to uncover your family and local history.

FEB. 6, 1-3 PM; HORTICULTURAL HALL, LAKE GENEVA
Bottoms Up: Book Discussion and Beer Tasting with Jim Draeger
Warm up on Winterfest weekend while learning about Wisconsin's historic bars and breweries with Bottoms Up author Jim Draeger.

WH FEB. 6-7; WADE HOUSE, GREENBUSH
Sleigh Ride Weekend
Take a horse-drawn sleigh ride through Kettle Moraine, free with your admission to Wade House.

WH FEB. 13, 11 AM-3 PM; WADE HOUSE, GREENBUSH
Hearthside Dinners
Enjoy a delicious hearth-cooked meal, prepared with your own hands, in the historic Wade House stagecoach hotel.

WH FEB. 13-14; WADE HOUSE, GREENBUSH
Sleigh Ride Weekend
Take a horse-drawn sleigh ride through Kettle Moraine, free with your admission to Wade House. **R**

WHM FEB. 16, 12:15-1 PM; WISCONSIN HISTORICAL MUSEUM, MADISON
History Sandwiched In: A Settler's Year
Author Kathleen Ernst shares stories from the immigrants who struggled to find their place and identity in Wisconsin.

WH FEB. 20-21; WADE HOUSE, GREENBUSH
Sleigh Ride Weekend
Take a horse-drawn sleigh ride through Kettle Moraine, free with your admission to Wade House.

FEB. 23, 10 AM; HUDSON AREA LIBRARY, HUDSON
Wisconsin History Tour
Return to Wake Robin: One Cabin in the Heyday of Northwoods Resorts
Join Northwoods vacationer Marnie O. Mamminga on a trip through a five-generation tradition of visits to her family's cabin, Wake Robin.

FEB. 23, 12 PM; HUDSON AREA LIBRARY, HUDSON
Wisconsin History Tour
Breakfast in a Victorian Kitchen
Enjoy a culinary tour of the late 19th century with actual menus and recipes from the Dousman family.

FEB. 23, 5:30 PM; HUDSON AREA LIBRARY, HUDSON
Wisconsin History Tour
Meet & Greet and Guided Tour of the Exhibit
Join State Historic Preservation Officer Jim Draeger at the Hudson Area Library for a personal welcome and a guided tour of the exhibit.

FEB. 23, 7 PM; PHIPPS CENTER FOR THE ARTS, HUDSON
Wisconsin History Tour
Stories from the Land with Jerry Apps
Listen to Apps speak about his experiences and learn more about the lessons of rural Wisconsin life.

FEB. 24, 10 AM; HUDSON AREA LIBRARY, HUDSON
Wisconsin History Tour
Practical Preservation for Your Family Treasures
Learn about preservation methods and when and where to find a conservator to help.

FEB. 24, 12 PM; HUDSON AREA LIBRARY, HUDSON
Wisconsin History Tour
Preservation 101
Join State Historic Preservation Officer Jim Draeger to learn how historic preservation benefits your community.

FEB. 24, 2 PM; HUDSON AREA LIBRARY, HUDSON
Wisconsin History Tour
Discover the Roots of Your Family Tree and Local History
The presenters will discuss the Society's collections in Madison and throughout the state at the ARCs.

FEB. 25, 10 AM; HUDSON AREA LIBRARY, HUDSON
Wisconsin History Tour
Your Stuff, Your Story
Bring an item that has a story to tell and share your story with us.

FEB. 25, 12 PM; HUDSON AREA LIBRARY, HUDSON
Wisconsin History Tour
The 'Real' Paul Bunyan
Unravel the mystery of this Wisconsin legend and discover the "real" Paul Bunyan with historian Michael Edmonds.

FEB. 25, 2 PM; HUDSON AREA LIBRARY, HUDSON
Wisconsin History Tour
Wisconsin Mounds: Giant Mysteries of Pre-History
Learn about the country's largest and most diverse collection of burial mounds.

FEB. 25, 5:30 PM; DICK'S BAR AND GRILL, HUDSON
Wisconsin History Tour
History Happy Hour
Yak it up over a Wisconsin-made brew, decorate your own beer labels and learn something new about Wisconsin's beer history.



Sleigh Ride Weekend at Wade House in Greenbush.

FEB. 26, 10 AM; HUDSON AREA LIBRARY, HUDSON
Wisconsin History Tour
Ship Captain's Daughter: Growing Up on the Great Lakes
 Sail through the history of shipping on the Great Lakes with the daughter of a longtime captain.

FEB. 26, 12 PM; HUDSON AREA LIBRARY, HUDSON
Wisconsin History Tour
Shipwrecks of Wisconsin's Rivers and Coastlines
 Dive into the history hidden beneath the waves of the Mississippi River and other Wisconsin waters with underwater archaeologist Tamara Thomsen.

VL FEB. 26-27; VILLA LOUIS, PRAIRIE DU CHIEN
Villa Louis Eagle Appreciation Weekend
 Join Villa Louis and other Prairie du Chien-area attractions as they celebrate our national bird.

FEB. 27, 10 AM-1 PM; WADE HOUSE, GREENBUSH
Door County Sled Dogs at Wade House
 Learn about the sport of dogsledding and have the opportunity to try it out for yourself! **R**

OWW FEB. 27, 10 AM-1 PM; OLD WORLD WISCONSIN, EAGLE
Employment and Volunteer Open House
 Interested in joining the Old World Wisconsin team? Find out about employment and volunteer opportunities for 2016.

MARCH

WHM MARCH 1, 12:15-1 PM; WISCONSIN HISTORICAL MUSEUM, MADISON
History Sandwiched In: Boys in Dresses, Girls in Pants – Dressing Children in the 19th Century
 Curator Leslie Bellais takes a look at the phenomenon of children's clothing in the 19th century using examples from the Society's collection.

VL MARCH 11-12; VILLA LOUIS, PRAIRIE DU CHIEN
Villa Louis Behind the Scenes
 These extended tours of the mansion will give visitors an insider's look at Villa Louis from top to bottom.

WHM MARCH 15, 12:15-1 PM; WISCONSIN HISTORICAL MUSEUM, MADISON
History Sandwiched In: Ole Evinrude and his Outboard Motor
 Bob Jacobson traces Ole Evinrude's story from the launch of his first hand-made boat on Lake Ripley to his legacy as a giant of Wisconsin industry.

WH MARCH 19, 11 AM-3 PM; WADE HOUSE, GREENBUSH
Hearthside Dinners
 Enjoy a delicious hearth-cooked meal, prepared with your own hands, in the historic Wade House stagecoach hotel.

APRIL

WHM APRIL 5, 12:15-1 PM; WISCONSIN HISTORICAL MUSEUM, MADISON
History Sandwiched In: Black Point Estate – A Leisurely Lifestyle
 Dave Desimone shares the history of Black Point Estate, a Queen Anne-style summer cottage built on Geneva Lake by Chicago beer baron Conrad Seipp in 1888.

APRIL 5, 12 PM; OSHKOSH PUBLIC LIBRARY, OSHKOSH
Wisconsin History Tour
Water Heritage Day Wisconsin's Historic Shipwrecks
 Dive into the history beneath the waves of the Great Lakes with underwater archaeologist Tamara Thomsen.

APRIL 6, 8 PM; OSHKOSH PUBLIC LIBRARY, OSHKOSH
Wisconsin History Tour
Wisconsin Mounds: Great Mysteries of History
 Dr. Amy Rosebrough will discuss the history of mound building in the Fox River passage of Wisconsin.

APRIL 7, 5:30 PM; OBLIO'S LOUNGE, OSHKOSH
Wisconsin History Tour
History Happy Hour
 Yak it up over a Wisconsin-made brew, decorate beer labels and learn something new about Wisconsin's beer history with Jim Draeger.

APRIL 8, 12 PM; OSHKOSH PUBLIC LIBRARY, OSHKOSH
Wisconsin History Tour
Flapper Fashion
 Leslie Bellais will put the flapper style in context of fashion history and how it changed women's clothing.

For a full list of tour events visit WisconsinHistoryTour.org



Tamara Thomsen presents Shipwrecks of Wisconsin's Rivers and Coastlines at Wisconsin History Tour in Hudson.

VL APRIL 15-16; VILLA LOUIS, PRAIRIE DU CHIEN
Villa Louis Behind the Scenes
 These extended tours of the mansion will give visitors an insider's look at the Villa Louis from top to bottom.

VL APRIL 16, 8:30 AM-1 PM; VILLA LOUIS, PRAIRIE DU CHIEN
Breakfast in a Victorian Kitchen
 Enjoy a culinary tour of the late 19th century with actual menus and recipes from the Dousman family.

WH APRIL 16, 11 AM-3 PM; WADE HOUSE, GREENBUSH
Hearthside Dinners
 Enjoy a delicious hearth-cooked meal, prepared with your own hands, in the historic Wade House stagecoach hotel.

WHM APRIL 19, 12:15-1 PM; WISCONSIN HISTORICAL MUSEUM, MADISON
History Sandwiched In: When Is Daddy Coming Home?: An American Family During World War II
 Dr. Richard Carlton Haney shares his personal story of growing up in a household influenced by the events of World War II.

OWW APRIL 22, 4:40-9 PM; OLD WORLD WISCONSIN, EAGLE
30th Star Benefit Antiques Preview Party and Dinner
 Preview all of the treasures the night before the auction. Enjoy a silent auction, dinner, cash bar and a talk from the Director of Villa Louis on "Victorian Furnishings." **R**

OWW APRIL 23, 10 AM; OLD WORLD WISCONSIN, EAGLE
30th Star Benefit Antiques Auction
 Hundreds of treasures, from classic to kitschy, will be available to the highest bidder.

APRIL 30, 8:30 AM-4:30 PM; ARCHAEOLOGY CENTER AND LABORATORIES, LA CROSSE
Volunteer Archaeology Field Survey Opportunity
 Celebrate Wisconsin Archaeology Month by volunteering in surveys of local fields to find unreported archaeological sites.

LOCATION KEY

BP Black Point Estate, Lake Geneva
 262-248-1888 or blackpointestate.org

CW Circus World, Baraboo
 Toll free 866-693-1500 or circusworldmuseum.org

FC First Capitol, Belmont
 608-987-2122 or firstcapitol.org

HMB H.H. Bennett Studio, Wisconsin Dells
 608-253-3523 or hbbennettstudio.org

MIM Madeline Island Museum, La Pointe
 715-747-2415 or madelineislandmuseum.org

OWW Old World Wisconsin, Eagle
 262-594-6301 or oldworldwisconsin.org

P Pendarvis, Mineral Point
 608-987-2122 or pendarvishistoricsite.org

RS Reed School, Neillsville
 608-253-3523 or reedschoolhistoricsite.org

S Stonefield, Cassville
 608-725-5210 or stonefieldhistoricsite.org

VL Villa Louis, Prairie du Chien
 608-326-2721 or villalouis.org

WH Wade House, Greenbush
 920-526-3271 or wadehouse.org

WHM Wisconsin Historical Museum, Madison
 608-264-6555 or wisconsinhistory.org/museum

Wisconsin Historical Society Wisconsin History Tour
 608-261-1379 or tourinfo@wisconsinhistory.org

R Registration required



WISCONSIN
HISTORICAL
SOCIETY

Published Quarterly by the Wisconsin Historical Society
Headquarters Building: 816 State Street,
Madison, WI 53706

SIGN UP FOR THE SOCIETY'S E-NEWSLETTER

Get all the latest Society news, information and upcoming events delivered to your email inbox. The e-newsletter will also point you to popular features on our website, including This Day in Wisconsin History. Sign up at wisconsinhistory.org.

Wisconsin's John Muir Exhibit

JAN. 19-FEB. 2 | **W.J. Niederkorn Library**
Port Washington



Dozens of communities around the state have been invited to host a traveling exhibit and reading program about John Muir in 2016. The exhibit tells the story of Muir's Wisconsin years and connects his conservation work to current issues.

Explore the exhibit on environmentalist John Muir that also celebrates the centennial of the National Park Service.

For more information visit
www.wisconsinhistory.org/muirexhibit

OTHER DATES

FEB. 2-15	GREENFIELD PUBLIC LIBRARY GREENFIELD
FEB. 16-MARCH 1	REEDSBURG PUBLIC LIBRARY REEDSBURG
MARCH 2-14	MANITOWOC PUBLIC LIBRARY MANITOWOC
MARCH 15-29	PRINCETON PUBLIC LIBRARY PRINCETON
MARCH 29-APRIL 12	WATERFORD PUBLIC LIBRARY WATERFORD
APRIL 12-25	OAK CREEK PUBLIC LIBRARY OAK CREEK
APRIL 26-MAY 10	CRANDON PUBLIC LIBRARY CRANDON





**Application for renovation, remodel or signage
project in a Menasha Historical District**

Date: _____ Property Address: _____

Applicant's name: _____ Owner or Renter? _____

Mailing Address if different than Property Address: _____

City: _____ State: _____ Zip: _____

Daytime Phone: _____ Evening Phone: _____ E-mail: _____

Description of planned improvement: _____

Note: Please attach all material lists, material brochures, samples and photos, Ascale drawing is recommended or may be required by the Commission.

List all contractors, sub contractors and material suppliers _____

Estimated Total Cost: \$ _____ Estimated Start Date: _____ Estimated Completion Date: _____

L.1 HALO GLOW LETTERS (Qty 2 Sets) SQUARE FOOTAGE: 77.25

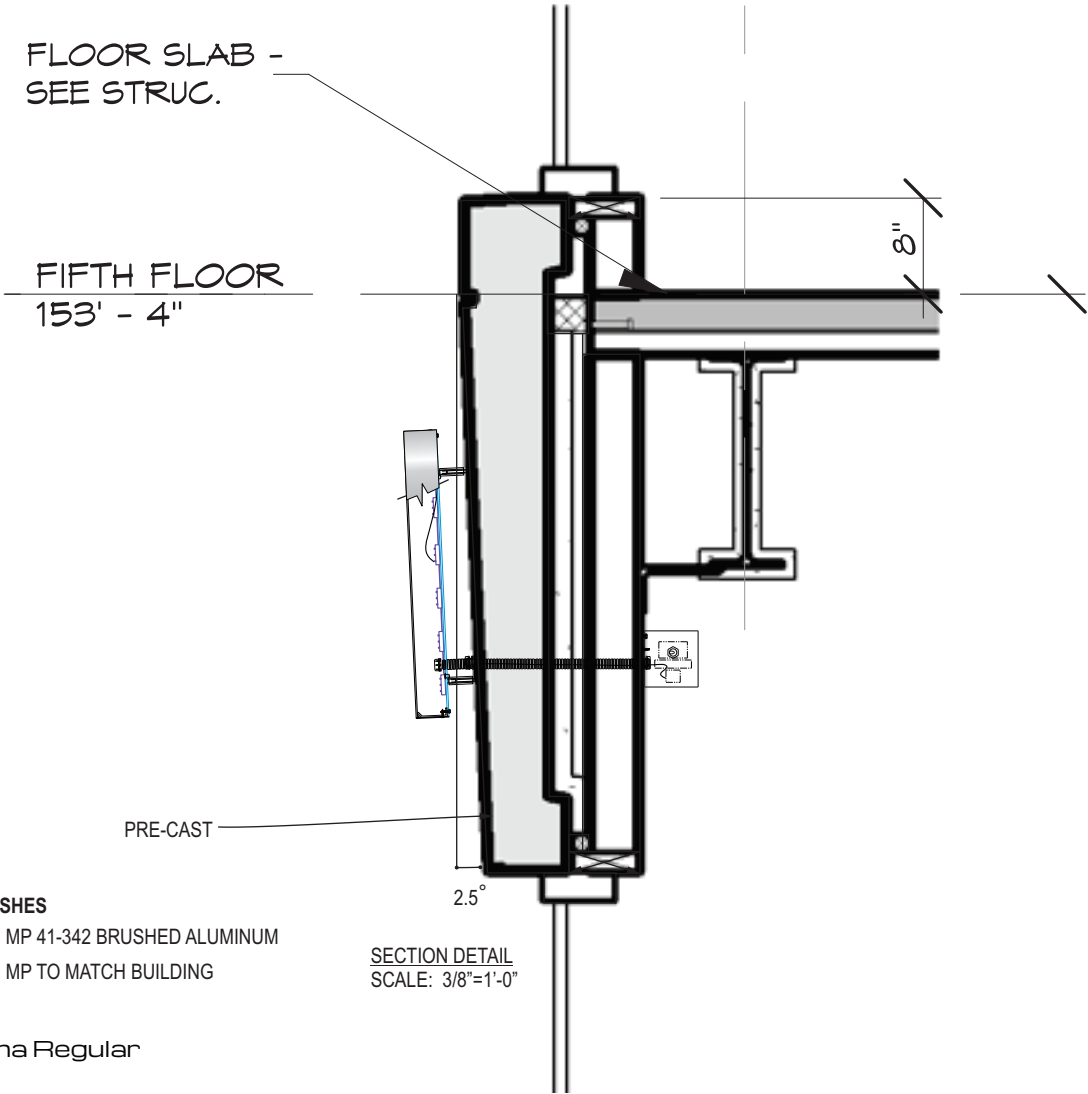
FIELD SURVEY REQUIRED
COLOR MATCH OF BUILDING REQUIRED



ELEVATION
SCALE: 3/8"=1'-0"

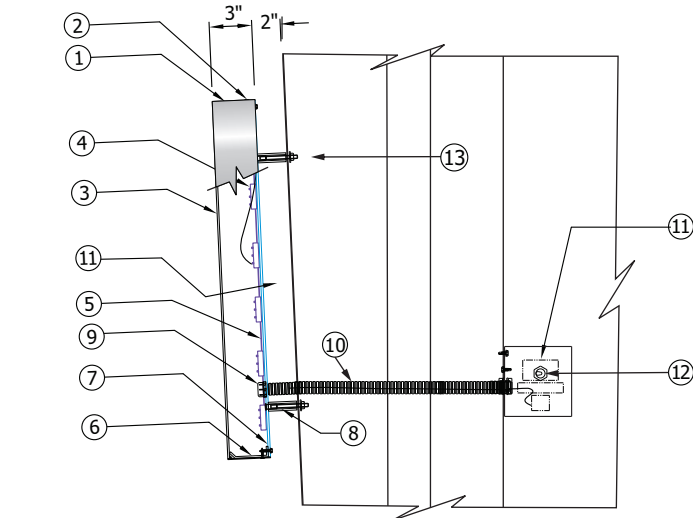


RENDERING- NOT TO SCALE



- COLORS/FINISHES
- P-1 MP 41-342 BRUSHED ALUMINUM
 - P-2 MP TO MATCH BUILDING

FONT
Michroma Regular



REMOTE WIRED HALO LIT REVERSE CHANNEL LETTERS
SCALE: NTS

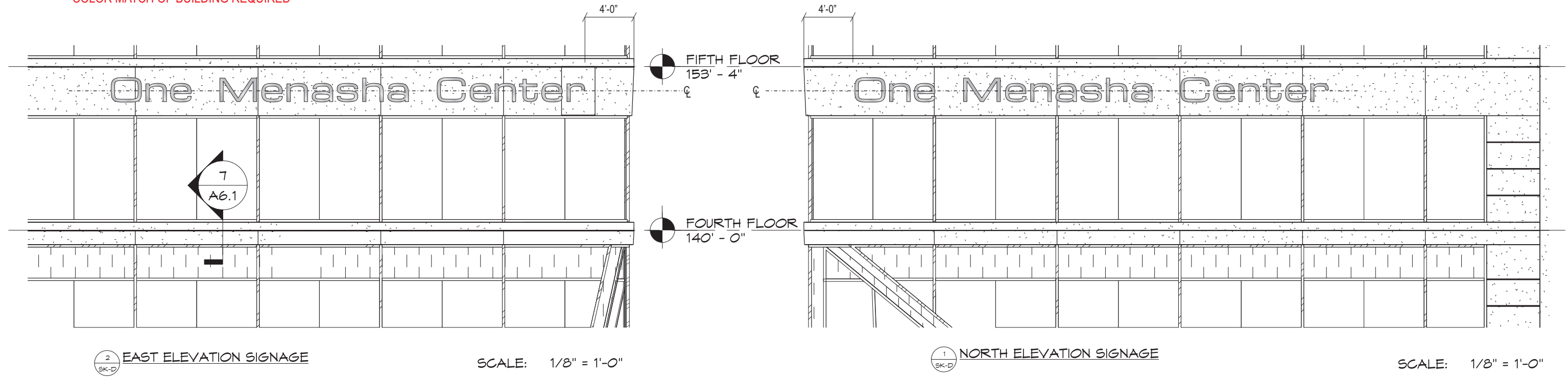
- 1 .063" X 3" ALUMINUM RETURNS WELDED TO ALUMINUM FACE P-1
- 2 COUNTERSUNK SCREWS
- 3 .125 ALUMINUM FACES P-1
- 4 BLUE LEDs / 1 ROW SECURED TO REMOVABLE BACK
- 5 .150" CLEAR POLYCARBONATE BACK TEK SCREWED TO ALUMINUM TABS
- 6 .125 ALUMINUM TABS FASTENED TO RETURNS WITH COUNTERSUNK SCREWS
- 7 1/4" DIA. WEEP HOLES IN BACK (EXTERIOR APPLICATIONS ONLY)
- 8 MOUNTING HARDWARE TO WALL 3/8" OD PVC SPACER BY 2" LONG P-2
- 9 7/8" ELECTRICAL HOLE / 3/4" COUPLER
- 10 FLEXIBLE CONDUIT TO POWER SUPPLY BOX
- 11 LED POWER SUPPLY INSIDE POWER BOX BEYOND WALL
- 12 TOGGLE SWITCH
- 13 FASTENERS TO BE DETERMINED BY WALL CONSTRUCTION

ALL LETTERS SET TO BE 120V
ALL ELECTRICAL POWER OUTS LOCATED NEAR THE BOTTOM
OF EACH LETTER/ONE HOLE PER LETTER

<div>JONES SIGN</div> <div>Your Vision Accomplished</div> <div>GREEN BAY • PHILADELPHIA</div> <div>SAN DIEGO • LAS VEGAS</div> <div>www.jonessign.com</div>	<div>JOB #: 214625-R3</div> <div>DATE: 02.05.16</div> <div>DESIGNER: Jim Pogo</div> <div>SALES REP: John Mortensen</div> <div>PROJ MGR: Chris Kidd</div>	<table><tr><th>REV.</th><th>DATE</th><th>BY</th><th>DESCRIPTION</th></tr><tr><td>1</td><td>2/10/16</td><td>JP</td><td>24" SET CHOSEN</td></tr><tr><td>2</td><td>2/12/16</td><td>JP</td><td>ADDED BACKERS AND RACEWAYS</td></tr><tr><td>3</td><td>2/17/16</td><td>JP</td><td>DELETED RACEWAYS CHANGE COLOR OF LETTER FACES</td></tr><tr><td>4</td><td>00.00.00</td><td>XX</td><td>XXXX</td></tr><tr><td>5</td><td>00.00.00</td><td>XX</td><td>XXXX</td></tr><tr><td>6</td><td>00.00.00</td><td>XX</td><td>XXXX</td></tr><tr><td>7</td><td>00.00.00</td><td>XX</td><td>XXXX</td></tr><tr><td>8</td><td>00.00.00</td><td>XX</td><td>XXXX</td></tr><tr><td>9</td><td>00.00.00</td><td>XX</td><td>XXXX</td></tr><tr><td>10</td><td>00.00.00</td><td>XX</td><td>XXXX</td></tr></table>	REV.	DATE	BY	DESCRIPTION	1	2/10/16	JP	24" SET CHOSEN	2	2/12/16	JP	ADDED BACKERS AND RACEWAYS	3	2/17/16	JP	DELETED RACEWAYS CHANGE COLOR OF LETTER FACES	4	00.00.00	XX	XXXX	5	00.00.00	XX	XXXX	6	00.00.00	XX	XXXX	7	00.00.00	XX	XXXX	8	00.00.00	XX	XXXX	9	00.00.00	XX	XXXX	10	00.00.00	XX	XXXX	<table><tr><td>CLIENT APPROVAL</td><td>DATE</td></tr><tr><td>LANDLORD APPROVAL</td><td>DATE</td></tr><tr><td>QC</td><td><div>QC APPROVED</div><div>By Rhoda Schley at 9:43 am, Feb 19, 2016</div></td></tr></table>	CLIENT APPROVAL	DATE	LANDLORD APPROVAL	DATE	QC	<div>QC APPROVED</div> <div>By Rhoda Schley at 9:43 am, Feb 19, 2016</div>	<div>Bergstrom</div>	<div>ONE MENASHA CENTER</div> <div>Broad & Milwaukee St.</div> <div>Menasha, WI, 54952</div>	<div>SHEET NUMBER</div> <div>1.0</div>
		REV.	DATE	BY	DESCRIPTION																																																			
		1	2/10/16	JP	24" SET CHOSEN																																																			
		2	2/12/16	JP	ADDED BACKERS AND RACEWAYS																																																			
3	2/17/16	JP	DELETED RACEWAYS CHANGE COLOR OF LETTER FACES																																																					
4	00.00.00	XX	XXXX																																																					
5	00.00.00	XX	XXXX																																																					
6	00.00.00	XX	XXXX																																																					
7	00.00.00	XX	XXXX																																																					
8	00.00.00	XX	XXXX																																																					
9	00.00.00	XX	XXXX																																																					
10	00.00.00	XX	XXXX																																																					
CLIENT APPROVAL	DATE																																																							
LANDLORD APPROVAL	DATE																																																							
QC	<div>QC APPROVED</div> <div>By Rhoda Schley at 9:43 am, Feb 19, 2016</div>																																																							
DESIGN PHASE: CONCEPTUAL																																																								

L.1 HALO GLOW LETTERS (Qty 2 Sets) ~ 24" T Set

SQUARE FOOTAGE: 77.25
FIELD SURVEY REQUIRED
COLOR MATCH OF BUILDING REQUIRED


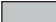


FRONT VIEW
NOT TO SCALE



NIGHT VIEW
NOT TO SCALE

COLORS/FINISHES

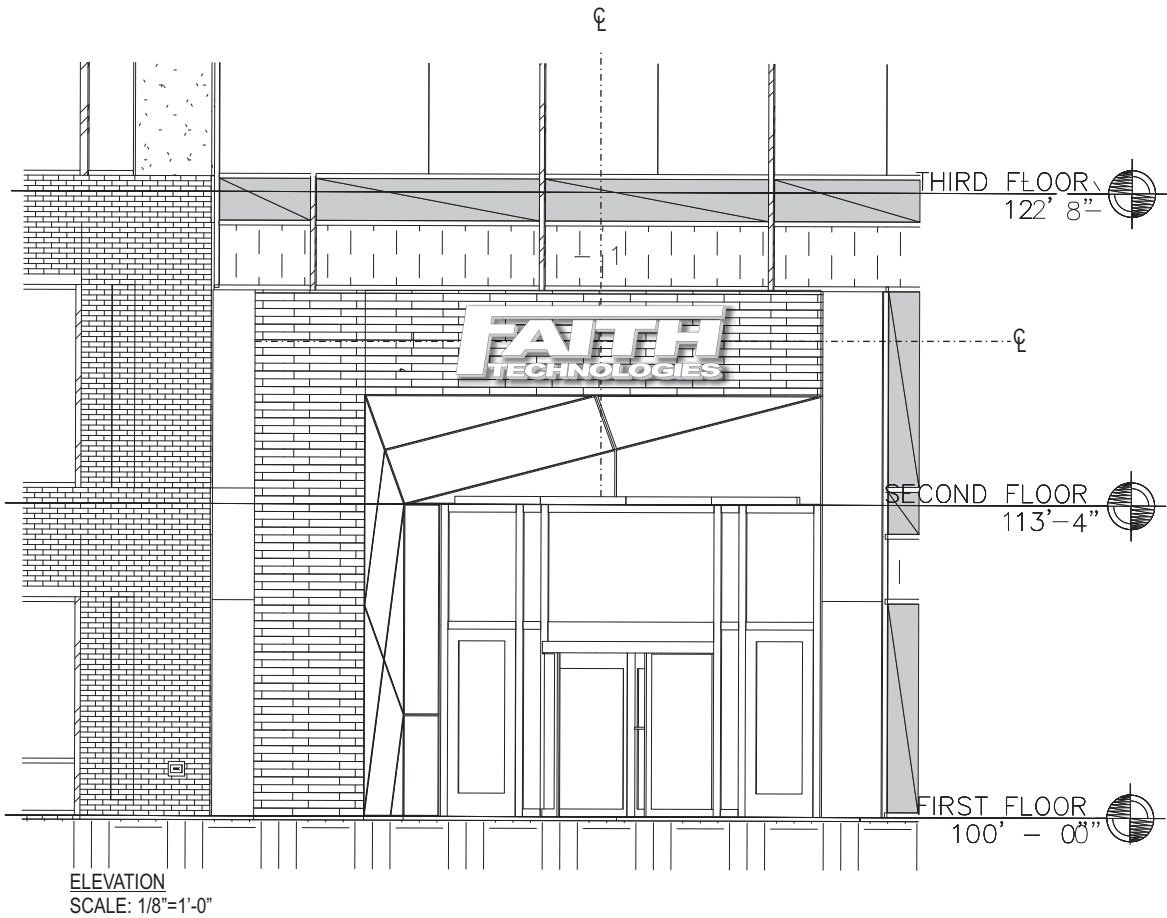
	P-1	MP 41-342 BRUSHED ALUMINUM
	P-2	MP TO MATCH BUILDING

<div>JONES SIGN</div> <div>Your Vision Accomplished</div> <div>GREEN BAY • PHILADELPHIA</div> <div>SAN DIEGO • LAS VEGAS</div> <div>www.jonessign.com</div>	<div>JOB #: 214625-R3</div> <div>DATE: 02.05.16</div> <div>DESIGNER: Jim Pogo</div> <div>SALES REP: John Mortensen</div> <div>PROJ MGR: Chris Kidd</div>	<div>REV.</div> <div>DATE</div> <div>BY</div> <div>DESCRIPTION</div>	<div>CLIENT APPROVAL</div> <div>DATE</div>		<div>Bergstrom</div>	<div>ONE MENASHA CENTER</div> <div>Broad & Milwaukee St.</div> <div>Menasha, WI, 54952</div>	<div>SHEET NUMBER</div> <div>2.0</div>
		<div>1</div> <div>2/10/16</div> <div>JP</div> <div>24" SET CHOSEN</div>	<div>LANDLORD APPROVAL</div> <div>DATE</div>				
		<div>2</div> <div>2/12/16</div> <div>JP</div> <div>ADDED BACKERS AND RACEWAYS</div>	<div>QC</div> <div>QC APPROVED</div> <div>By Rhoda Schley at 9:43 am, Feb 19, 2016</div>				
		<div>3</div> <div>2/17/16</div> <div>JP</div> <div>DELETED RACEWAYS CHANGE COLOR OF LETTER FACES</div>					
		<div>4</div> <div>00.00.00</div> <div>XX</div> <div>XXXX</div>					
<div>5</div> <div>00.00.00</div> <div>XX</div> <div>XXXX</div>							
<div>6</div> <div>00.00.00</div> <div>XX</div> <div>XXXX</div>							
<div>7</div> <div>00.00.00</div> <div>XX</div> <div>XXXX</div>							
<div>8</div> <div>00.00.00</div> <div>XX</div> <div>XXXX</div>							
<div>9</div> <div>00.00.00</div> <div>XX</div> <div>XXXX</div>							
<div>10</div> <div>00.00.00</div> <div>XX</div> <div>XXXX</div>							

This is an original, unpublished drawing by Jones Sign Co., Inc. It is for your personal use in conjunction with a project being planned for you by JONES SIGN. It is not to be shown to anyone outside of your organization, nor is it to be used, reproduced, copied or exhibited in any fashion. Use of this design or the salient elements of this design in any sign done by any other company, without the express written permission of JONES SIGN, is forbidden by law and carries a civil forfeiture of up to 25% of the purchase price of the sign. JONES SIGN will endeavor to closely match colors, including PMS, where specified. We cannot guarantee exact matches due to varying compatibility of surface materials and paints used. All sizes and dimensions are illustrated for client's conception of project and are not to be understood as being exact size or exact scale.

L.5 HALO GLOW LETTERS (Qty 1)

SQUARE FOOTAGE: 32.68
FIELD SURVEY REQUIRED
COLOR MATCH OF BUILDING REQUIRED



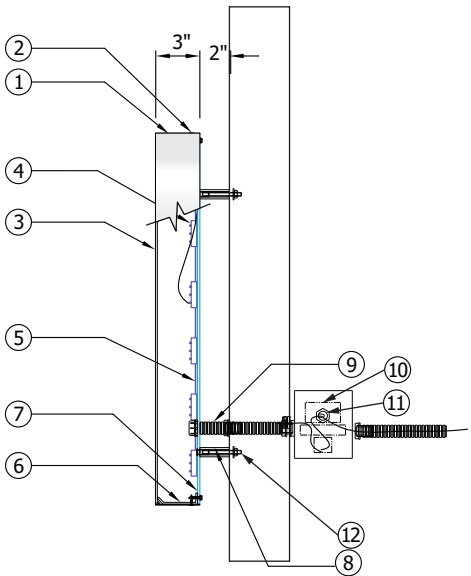
- COLORS/FINISHES
- P-5 MP WHITE SATIN FINISH
 - P-2 MP TO MATCH TO BUILDING CANOPY



NIGHT VIEW
SCALE: 1/4"=1'-0"



RENDERING
NOT TO SCALE



REMOTE WIRED HALO LIT REVERSE CHANNEL LETTERS
SCALE: NTS

- 1 .063" X 3" ALUMINUM RETURNS WELDED TO ALUMINUM FACE P-5
- 2 COUNTERSUNK SCREWS
- 3 .125 ALUMINUM FACES P-5
- 4 WHITE LEDs / 1 ROW SECURED TO REMOVABLE BACK
- 5 .150" CLEAR POLYCARBONATE BACK TEK SCREWED TO ALUMINUM TABS
- 6 .125 ALUMINUM TABS FASTENED TO RETURNS WITH COUNTERSUNK SCREWS
- 7 1/4" DIA. WEEP HOLES IN BACK (EXTERIOR APPLICATIONS ONLY)
- 8 3/8" OD PVC SPACER BY 2" LONG P-2
- 9 7/8" ELECTRICAL HOLE / 3/4" COUPLER WITH FLEXIBLE CONDUIT
- 10 LED POWER SUPPLY INSIDE POWER SUPPLY BOX BEYOND WALL
- 11 TOGGLE SWITCH
- 12 FASTENERS TO BE DETERMINED BY WALL CONSTRUCTION

ALL LETTERS SET TO BE 120V
ALL POWER OUTS LOCATED NEAR THE BOTTOM OF EACH LETTER

<div>JONES SIGN</div> <div>Your Vision Accomplished</div> <div>GREEN BAY • PHILADELPHIA</div> <div>SAN DIEGO • LAS VEGAS</div> <div>www.jonessign.com</div>	JOB #: 214969_R0	REV.	DATE	BY	DESCRIPTION	CLIENT APPROVAL	DATE	<div>FAITH</div> <div>TECHNOLOGIES</div>	ONE MENASHA CENTER	SHEET NUMBER	
	DATE: 2/18/16	1	00.00.00	XX	XXXX				LANDLORD APPROVAL		DATE
	DESIGNER: Jim Pogo	2	00.00.00	XX	XXXX						
	SALES REP: John Mortensen	3	00.00.00	XX	XXXX						
	PROJ MGR: Chris Kidd	4	00.00.00	XX	XXXX						
		5	00.00.00	XX	XXXX						
		6	00.00.00	XX	XXXX						
		7	00.00.00	XX	XXXX						
		8	00.00.00	XX	XXXX						
		9	00.00.00	XX	XXXX						
		10	00.00.00	XX	XXXX						
						QC					
						QC APPROVED					
						By Rhoda Schley at 9:43 am, Feb 19, 2016					
									DESIGN PHASE: CONCEPTUAL		

This is an original, unpublished drawing by Jones Sign Co., Inc. It is for your personal use in conjunction with a project being planned for you by JONES SIGN. It is not to be shown to anyone outside of your organization, nor is it to be used, reproduced, copied or exhibited in any fashion. Use of this design or the salient elements of this design in any sign done by any other company, without the express written permission of JONES SIGN, is forbidden by law and carries a civil forfeiture of up to 25% of the purchase price of the sign. JONES SIGN will endeavor to closely match colors, including PMS, where specified. We cannot guarantee exact matches due to varying compatibility of surface materials and paints used. All sizes and dimensions are illustrated for client's conception of project and are not to be understood as being exact size or exact scale.



505 Lawrence Dr., De Pere, WI 54115
920-336-8900 greenbaysigns.com

CLIENT: COMMUNITY FIRST C.U.

LOCATION: ONE MENASHA CTR, 116 MAIN ST, MENASHA

DRAWN BY: BILL V

SALESPERSON: KELLI L

DATE: 3/2/2016

DESIGN #: D9906

PAGE: 1.2

REVISION LOG:	INTL	DATE	DESCRIPTION
	BV	3/8/2016	EXPAND BACKER

BACKLIT HDU LETTERS

QUANTITY: 1

LETTERS: BACKLIT CHANNEL LETTERS

LIGHTING: LED (WHITE) BACK ROUTED TO FIT
SPECIAL THIN LEDS

CREDIT UNION: NON LIT

FACES: 1 1/2" HDU LAMINATED WITH .080 ALUMINUM

BACKING: 3/16" CLEAR ACRYLIC

GRAPHICS: NONE

MOUNTING: OFFSET 1 1/2" OFF BACK CABINET

FONT: LOGO

BACK CABINET: PAN-FORMED ALUMINUM (2")

LIGHTING: NON-ILLUMINATED (F-3)

FACE: .125" ALUMINUM

MOUNTING: FLUSH TO WINDOW MULLION SYSTEM

PHOTO EYE: NO

INSTRUCTION: CSC TO PRODUCE & INSTALL AS SHOWN

ESTIMATING SIZING:

PERIMETER: 1,234 INCHES

AREA: 1,151 INCHES SQ

COLORS:

P-1 MATCH PMS 329C

P-2 MATCH PMS 2627C

F-3 VERT. BRUSHED ALUMINUM W MATTE CLEAR COAT

CUSTOMER SIGNATURE FOR DESIGN APPROVAL:

DATE

A NORTH ELEVATION

1 SCALE:3/32" = 1'



A DETAIL

3 SCALE: 1/2" = 1'

Survey arc & work area dimensions
prior to production



BACK CABINET FOR EVEN LIGHT OVER MULLION SYSTEM

BACKLIT HDU LETTERS: OPT 2



A

UNDER CONSTRUCTION

2

SCALE: NTS



A

NIGHT VIEW

4

SCALE: NTS

WORK AREA:

ALUMINUM
COMPOSITE PANELS
IN A STOREFRONT
WINDOW MULLION
SYSTEM. JUNCTION
BOXES BEHIND.

Halo-Lit
1 1/2" routed
HDU laminate
w/ .080" alum.

NON - LIT
1 1/2" routed
HDU laminate
w/ .080" alum.

F-3



CONCEPTUAL DRAWING ONLY - NOT FOR FABRICATION PURPOSES (SIZES ARE APROX)

This is an original, unpublished drawing by Creative Sign Co, Inc. It is for your personal use, in conjunction with a project being planned for you by Creative Sign Co, Inc. It is not to be shown to anyone outside of your organization nor is it to be used, reproduced, copied or exhibited in any fashion. Use of this design or the salient elements of this design in any sign done by any other company, without the expressed written permission of Creative Sign Co, Inc., is forbidden by law and carries a civil forfeiture of up to 25% of the purchase price of the sign. Creative Sign will endeavor to closely match colors, including PMS, where specified. We cannot guarantee exact matches due to varying compatibility of surface materials and paints used. All sizes and dimensions are illustrated for clients conception of the project and are not to be understood as being exact size or exact scale.

WORK AREA PRIOR
TO PRODUCTION

DATE, PRIOR TO PRODUCTION

CLIENT: COMMUNITY FIRST C.U.

LOCATION: ONE MENASHA CTR, 116 MAIN ST, MENASHA

DRAWN BY: BILL V

SALESPERSON: KELLI L

DATE: 2/24/2016

DESIGN #: D9906

PAGE: 4.2

REVISION LOG: INTL DATE DESCRIPTION

BV 3/02/2016 DRIVE-UP

PUSH-THRU CABINET

QUANTITY: 2 (1 EACH)

SIDES: S/F

LIGHTING: LED (WHITE)

CABINET DESC: FABRICATED ALUM (4")

RETAINER: NONE

FACES: .125" ROUTED ALUMINUM WITH
3/4" CLEAR ACRYLIC PUSH-THRU

GRAPHICS: CUT VINYL, 1ST SURFACE (ICON)
DIGITAL PRINT, 1ST SURFACE (TEXT)

VINYL: PREMIUM OPAQUE WITH GLOSS LAM

FONT: LOGO

MOUNTING: FLUSH TO BUILDING (NEW BRICK)

PHOTO EYE: NO

INSTRUCTION: CSC TO PRODUCE AND INSTALL PUSH-
THRU SIGNS AS SHOWN.

COLORS:

V-1 GERBER, TEAL, 220-46 - OPAQUE (MATCH PMS 329C)

F-3 VERT. BRUSHED ALUMINUM W MATTE CLEAR COAT

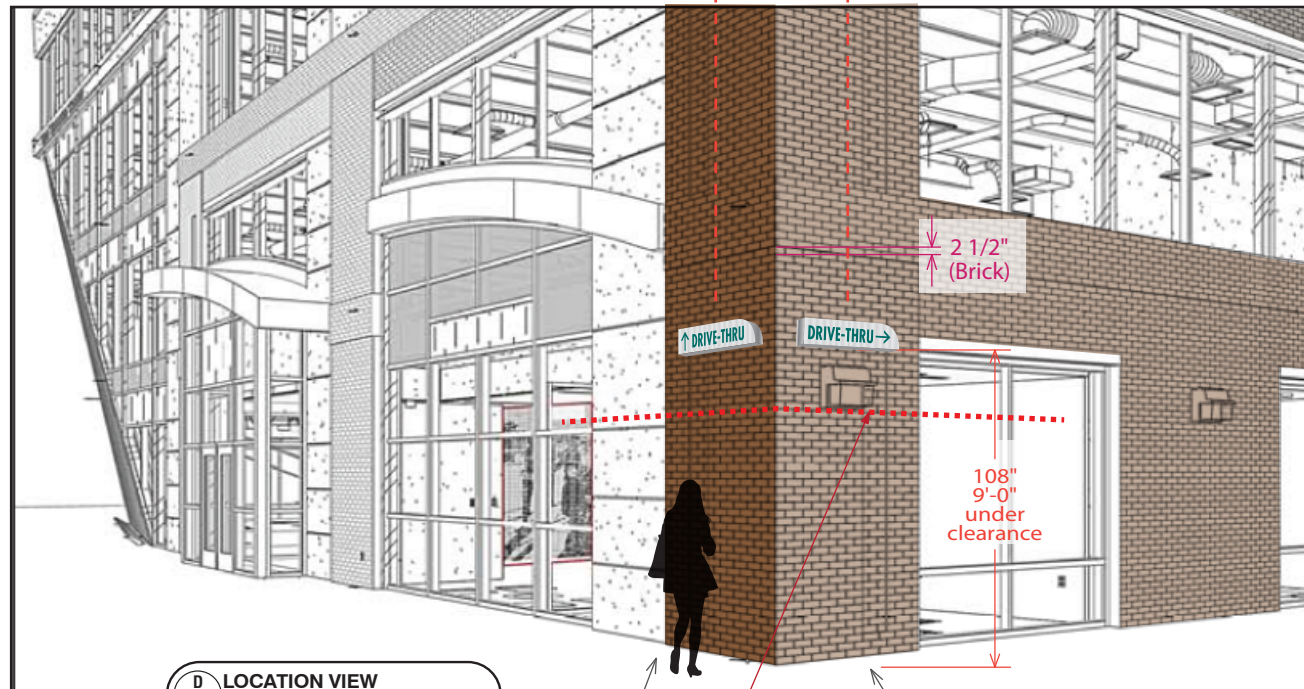
V-4 WHITE TRANS GRAPHICS BACKER

P-5 BLACK

CUSTOMER SIGNATURE FOR DESIGN APPROVAL:

DATE

PLACEMENT
MEASUREMENTS
APPROXIMATE

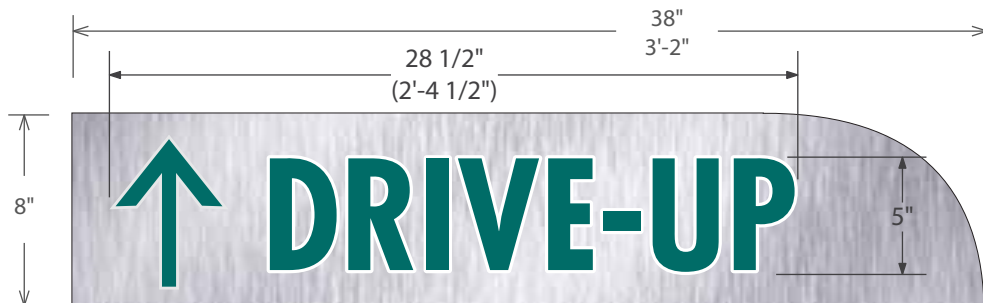


D 1 LOCATION VIEW
SCALE: NTS, APPROX 3/16" = 1'

Sign 1

Sign 2

7' Minimum under clear per city specs



D 3 SIGN 1 DETAIL
SCALE: 1 1/2" = 1'



D 4 SIGN 2 DETAIL
SCALE: 1 1/2" = 1'

PUSH-THRU CABINET: OPT 3

DRIVE-UP →

D 2 NIGHT VIEW
SCALE: NTS

CONCEPTUAL DRAWING ONLY - NOT FOR FABRICATION PURPOSES (SIZES ARE APROX)

This is an original, unpublished drawing by Creative Sign Co, Inc. It is for your personal use, in conjunction with a project being planned for you by Creative Sign Co, Inc. It is not to be shown to anyone outside of your organization nor is it to be used, reproduced, copied or exhibited in any fashion. Use of this design or the salient elements of this design in any sign done by any other company, without the expressed written permission of Creative Sign Co, Inc., is forbidden by law and carries a civil forfeiture of up to 25% of the purchase price of the sign. Creative Sign will endeavor to closely match colors, including PMS, where specified. We cannot guarantee exact matches due to varying compatibility of surface materials and paints used. All sizes and dimensions are illustrated for clients conception of the project and are not to be understood as being exact size or exact scale.

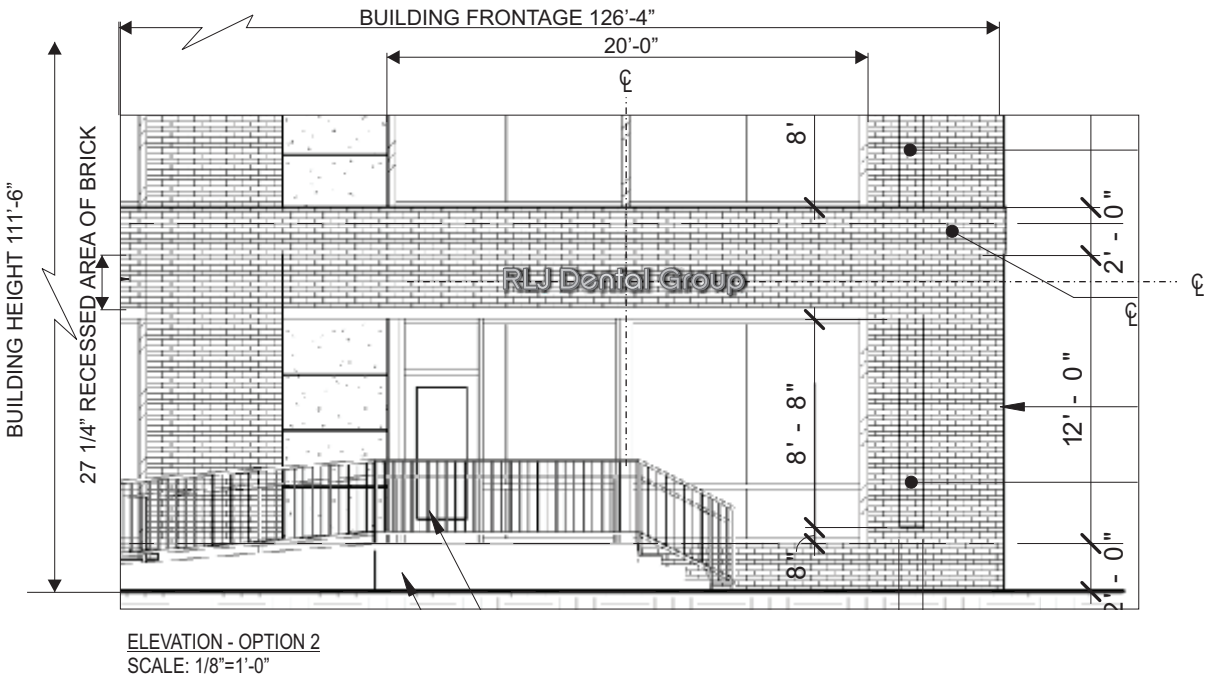
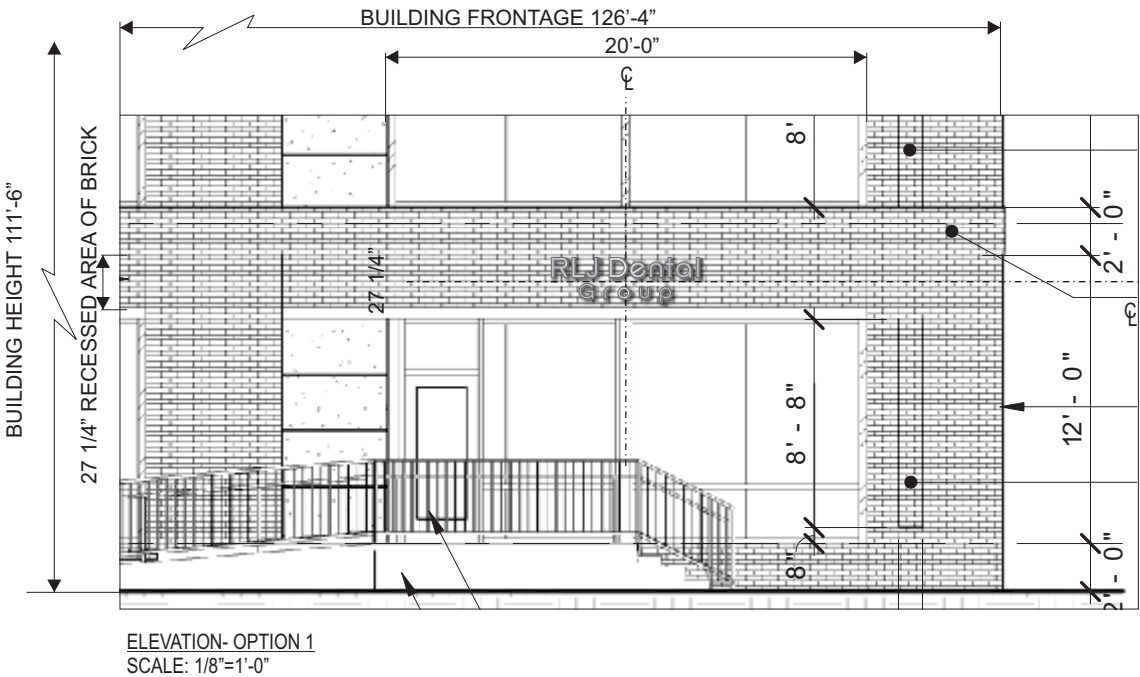
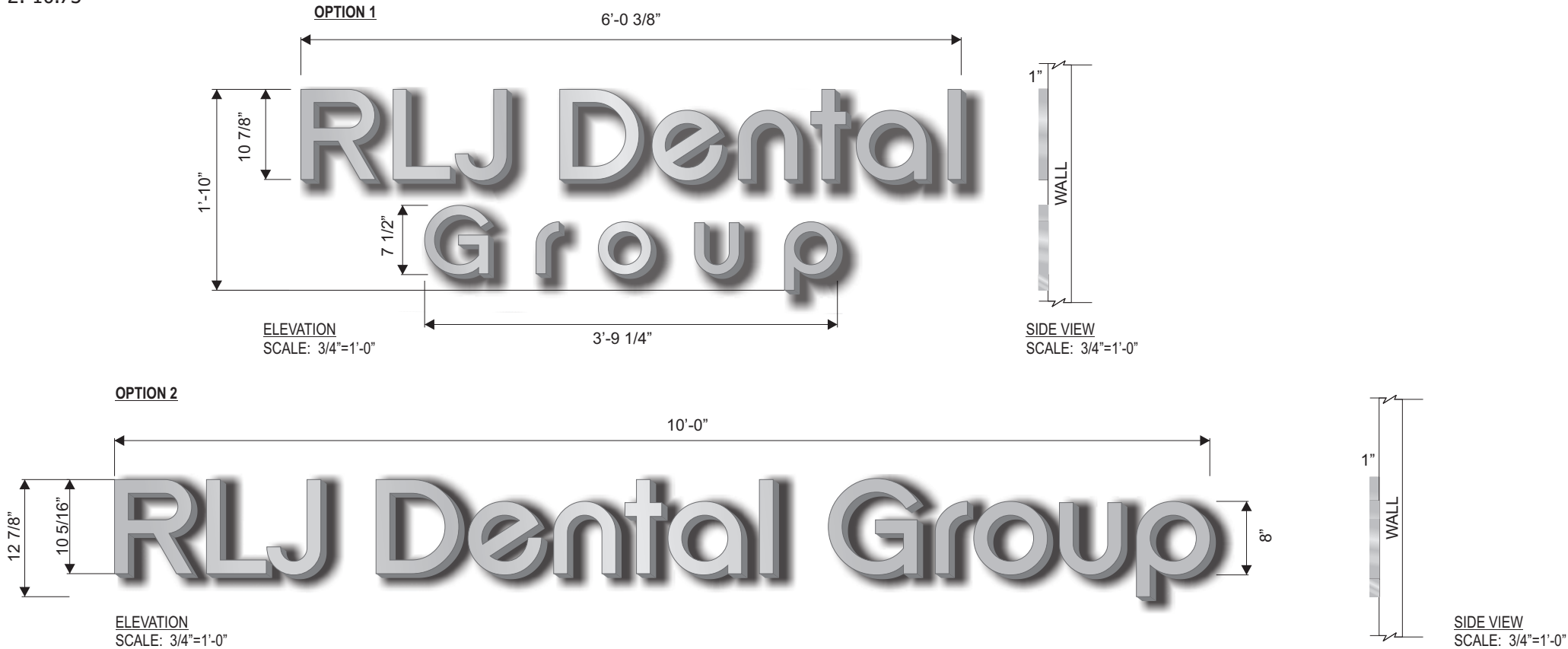


SITE, PRIOR TO PRODUCTION

L.1 NON-LIT LETTER OPTIONS (Qty 1)

SQUARE FOOTAGE: OPTION ONE: 11.06 ~ OPTION 2: 10.73

FIELD SURVEY REQUIRED



SPECIFICATIONS
1. DIMENSIONAL 1" DEEP ALUMINUM LETTERS
FACES AND RETURNS PAINTED P-1
STUD MOUNTED FLUSH TO BUILDING

COLORS/FINISHES
P-1 MP 41-342 BRUSHED ALUMINUM

FONT: SF New Republic Closest match to client logo

FILED UNDER DESIGN/2016/BERGSTROM/MENASHA CENTER

<div><div>JONES SIGN</div><div>Your Vision Accomplished</div><div>GREEN BAY • PHILADELPHIA</div><div>SAN DIEGO • LAS VEGAS</div><div>www.jonessign.com</div></div>	<div>JOB #: 215442_R0</div> <div>DATE: 3/9/16</div> <div>DESIGNER: Jim Pogo</div> <div>SALES REP: John Mortensen</div> <div>PROJ MGR: Chris Kidd</div>	<div>REV.</div> <div>DATE</div> <div>BY</div> <div>DESCRIPTION</div>	<div>CLIENT APPROVAL</div> <div>DATE</div>		<div><div><div></div><div>RLJ Dental</div><div>family dentistry</div></div></div>	<div>ONE MENASHA CENTER</div> <div>Broad & Milwaukee St.</div> <div>Menasha, WI, 54952</div>	<div>SHEET NUMBER</div> <div>1.0</div>	
		<div>1</div> <div>00.00.00</div> <div>XX</div> <div>XXXX</div>	<div>LANDLORD APPROVAL</div> <div>DATE</div>					
		<div>2</div> <div>00.00.00</div> <div>XX</div> <div>XXXX</div>	<div>QC</div> <div>QC APPROVED</div> <div>By Rhoda Schley at 3:59 pm, Mar 09, 2016</div>					
		<div>3</div> <div>00.00.00</div> <div>XX</div> <div>XXXX</div>	<div>4</div> <div>00.00.00</div> <div>XX</div> <div>XXXX</div>					
		<div>4</div> <div>00.00.00</div> <div>XX</div> <div>XXXX</div>					<div>DESIGN PHASE: CONCEPTUAL</div>	
		<div>5</div> <div>00.00.00</div> <div>XX</div> <div>XXXX</div>						
		<div>6</div> <div>00.00.00</div> <div>XX</div> <div>XXXX</div>						
		<div>7</div> <div>00.00.00</div> <div>XX</div> <div>XXXX</div>						
		<div>8</div> <div>00.00.00</div> <div>XX</div> <div>XXXX</div>						
		<div>9</div> <div>00.00.00</div> <div>XX</div> <div>XXXX</div>						
		<div>10</div> <div>00.00.00</div> <div>XX</div> <div>XXXX</div>						



Application for Grant or Loan

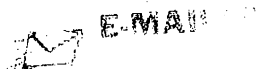
Date: 3/10/16 Property Address: 204 Main St. Menasha, WI
Applicant's name: Rebecca Mader Owner or Renter? Owner
Mailing Address if different than Property Address: 537 Broad St.
City: Menasha State: WI Zip: 54955
Daytime Phone: 920-659-2422 Evening Phone: _____ E-mail: yourdailygrind90@yahoo.com
Description of planned improvement: paint out front and side/back of building.
walk up window for side of building, front window replacement.
awnings in gray material, remove old wood from
back of building
Note: Please attach all available bids, proposals and estimates for the planned improvement including a material lists, material brochures, samples and photos. A scale drawing is recommended or may be required by the Commission.
List all contractors, sub contractors and material suppliers Tri City Glass, Appleton Awning or
Oshkosh tent & Awning, Complete Design for painting.
Estimated Total Cost: \$ 12,000 Estimated Start Date: ASAP Estimated Completion Date: April 1st
Total amount being requested from the Landmarks Commission: \$ 2500 Grant or Loan? Grant

Terms and Conditions:

1. The landmarks Commission reserves the right, in its sole discretion, to approve or deny any request for grants or loans, in whole or in part, or to conditional approval and/or payment of said grant or loan upon such terms as it deems appropriate. No grant or denial of any prior requests shall constitute precedent for the grant or denial of any subsequent request.
2. Every request shall comply with the Improvement Grant/Loan Policies stated on the back of this form which are incorporated herein by reference.
3. Payment shall only be made for those improvements approved by the landmarks Commission prior to or contemporaneous with the contribution request.
4. Payment shall only be made upon submission of actual invoices for labor or material and only for work that is performed in compliance with all applicable state, county and municipal code provisions and with required permits. Completion of work shall be verified by the Director of Community Development.



AUTOMOTIVE • RESIDENTIAL • COMMERCIAL
The Right Product. The Right Way.®



**A Minority Owned &
Operated Business**

☒ 2801 N. Roemer Rd.
Appleton, WI 54911
920.734.9164
800.449.8081
f 920.734.1096

☐ 1811 E. Mason St.
Green Bay, WI 54302
920.468.7820
800.242.8177
f 920.468.5337

Proposal

Replying to subject inquiry, we are pleased to quote as follows; and unless otherwise agreed in writing, the conditions constitute a part of this quotation.

**Your Daily Grind
Attn: Beck Mader**

**3/9/2016
New front windows**

Terms: 50% down, remaining balance due upon completion

We propose to furnish and install anodized aluminum, thermally broken, fixed storefront windows to replace existing. New framing to be clear/dark bronze anodized aluminum, glazed with 1" clear tempered, low-e glass. Includes the removal and disposal of the existing glass and framing.

- * Includes all exterior sealants at our work.
- * Any interior trim to be done by others.

For the sum of \$4,585.00 Tax included

Note: Add \$250.00 if framing is to be green in lieu of standard anodized.

Note: 4 week lead time after approved shop drawings.

IF YOU HAVE ANY QUESTIONS, PLEASE CALL ME AT 920-734-9164, 1-800-449-8081, OR E-MAIL ME AT mikevv@tricityglass-door.com THANK YOU!!


MIKE VAN VREDE,

ESTIMATOR, TRI-CITY GLASS & DOOR, INC.

MVV; CVH

C/C Todd Grall

Acceptance of this proposal by Buyer shall be acceptance of all terms and conditions recited herein which shall supersede any conflicting term in any other contract document. Any of the Buyer's terms and conditions in addition or different from this proposal are objected to and shall have no effect. Buyer's agreement herewith shall be evidenced by Buyer's signature hereon or by permitting Seller to commence work for project.

As required by the Wisconsin Construction Lien Law, builder hereby notifies owner that persons or companies furnishing labor or materials for the construction on owner's land may have lien rights on owner's land and buildings if not paid. Those entitled to lien rights, in addition to the above signed builder, are those who contract directly with the owner or those who give the owner notice within 60 days after they first furnish labor or materials for the construction. Accordingly, owner probably will receive notices from those who furnish labor or materials for the construction, and should give a copy of each notice received to his mortgage lender, if any. Builder agrees to cooperate with the owner and his lender, if any, to see that all potential lien claimants are duly paid.

Date of Acceptance: _____

Signature: _____

TRI CITY GLASS & DOOR, INC.

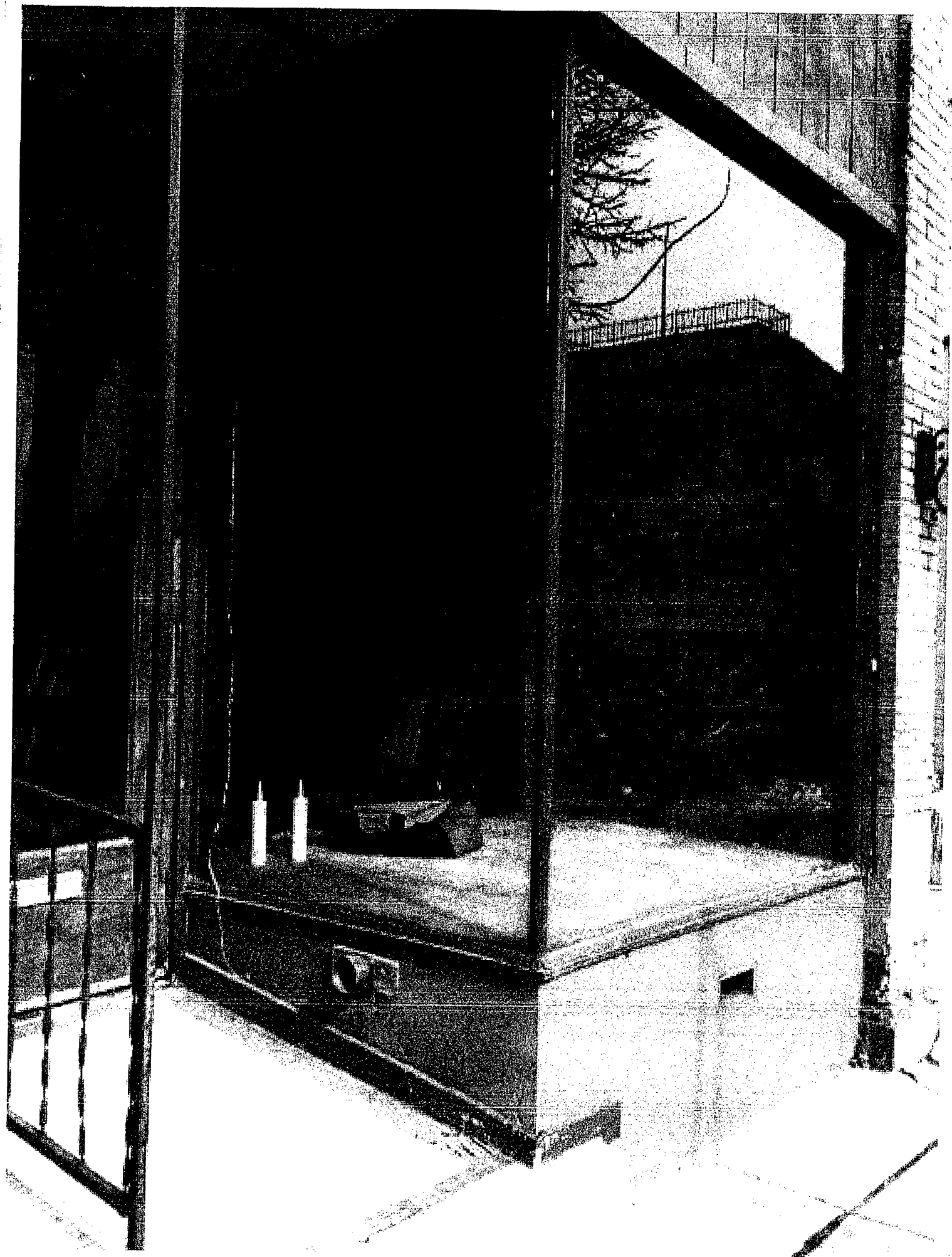
CONDITIONS OF PROPOSAL

NOTE: This proposal may be withdrawn by us if not accepted within **THIRTY** days. All material is guaranteed to be as specified. All work to be completed in workmanlike manner according to standard practices. Any alterations or deviation from specifications below involving extra costs will be executed only upon written orders, and will become an extra charge over and above the estimate. All agreements contingent upon strikes, accidents or delays beyond our control. Owner to carry fire, tornado and builders risk insurance. Our workers are fully covered by Workmen's Compensation Insurance.

- Nothing in this subcontract agreement shall require Seller to continue performance if timely payments are not made to Seller for suitably performed work or stored materials.
- Owner, Contractor and Tenant agree to allow Tri City Glass & Door to remove materials provided and installed by Tri City Glass & Door that have not been paid for within the specified payment terms detailed on the reverse side of this proposal. All parties further agree that any damage or security breach to the building resulting from the removal of the materials, which were provided, will be the responsibility of the party who was/is responsible for the payment of the materials.
- Nothing in this agreement shall serve to void Seller's right to file a lien or claim on its behalf in the event that any payment to Seller is not timely made.
- Locating of plumbing and electrical concealed in existing walls by owner/contractor. We are not responsible for damage caused if plumbing/electrical has not been properly located and marked prior to our drilling or anchoring.
- Various chemicals will damage aluminum and glass (uncured masonry, plaster, masonry cleaning acid, etc.). It is the owners/contractors responsibility to protect products from damage after installation.
- It is understood that if you use your own contract form, the conditions of this quotation fully apply unless specifically written out and mutually agreed upon.
- 25% restocking charge for inventory items.
- No returns on special order purchases or custom fabricated items.
- All homes and daycare facilities built prior to 1978 require lead safe work practices. Please inform us if your building was built prior to 1978.

THE FOLLOWING ARE NOT INCLUDED AND ARE TO BE THE OWNERS/CONTRACTORS RESPONSIBILITY:

- Building permit (if required)
- Temporary barricades (traffic, weather or theft)
- Any work done on the owners glass will be done at owners risk
- Electrical hook-up to door hardware if applicable
- Final cleaning of glass and aluminum
- Does not include removal or reinstallation of any security systems, buzzers, etc., unless noted otherwise
- Delivery to jobsite includes transportation to jobsite only, not unloaded or spotted
- Final painting of steel doors and frames*
*We will not be responsible for finish quality caused by the use of dark or high gloss paint. Special prep will be required by others when these paints are used.
- Exterior steel doors should be painted in a "LIGHT" semi-gloss color to prevent THERMOBOW and PREMATURE RUSTOUT.



Proposal

Page No. of Pages

APPLETON AWNING SHOP, INC.
Quality Awnings & Service Since 1922
3052 West Elberg Ave
APPLETON, WISCONSIN 54914
(920) 733-4701

PROPOSAL SUBMITTED TO Your Daily Grind	DATE 2-12-16
ADDRESS Becky Mador	PHONE 659-2422
JOB NAME AND LOCATION 204 Main St. Menasha, WI - 54952	DATE OF PLANS
	ARCHITECT
	JOB PHONE

We hereby submit specifications and estimates subject to all terms and conditions as set forth on both sides, as follows:

**TO RECOVER + Letter 2 Awnings
using SLATE Sunbrella Material
Front Door**

	2,160.00
Back Door	1,573.75
	3,733.75
	186.69 TAX
	3,920.44

**Customer To get any needed Permits
and Remove + reinstall electric in
Awnings**

**50% Down with order
4-5 WKS Delivery**

We Propose hereby to furnish material and labor - complete in accordance with above specifications
for the sum of _____ dollars (\$ _____)

Note: This proposal may be withdrawn by us if
not accepted within _____ days

Authorized
Signature

Mike Darskne

Accepted: The above prices, specifications and
conditions are satisfactory and are hereby accepted. You
are authorized to do the work as specified. Payment will
be made as outlined above.

Signature _____

Date _____

Signature _____

Oshkosh Tent & Awning Co., Inc.

110 East Fernau Avenue, Oshkosh, WI 54901

800-861-9341 Ph: 920-235-3170 Fx: 920-235-7100

www.otainc.com

QUOTE

Quote Valid for 60 Days

Sold To:

Your Daily Grind

Attn: Tim Lenth

204 Main St.

Menasha, WI 54952

Phone: 920-858-1688

Email: tjlenth@yahoo.com

Install At:

Same

County: Winnebago

Quote Date: 02/10/16

Lead Time: 4-6 Weeks

Qty	Description	Unit	Price
-----	-------------	------	-------

Remove Awnings and Recover

1	5' 0" Height X 6' 7" Width X 8' 0" Projections Make Frame Modifications to Finish Edge to Accept Material Not Covering any of the Vertical Supports that have Existing Covers Take Down Awning on Right Connected to Entrance Canopy Customer will take down awning on left when facing front of building	\$2,486.00	\$2,486.00
1	3' 0" Height X 5' 8" Width X 5' 0" Projection	\$1,740.00	\$1,740.00

Fabric: Sunbrella

Color: TBD

PVC Trim: TBD

Valance: none

Graphics: YES, Two Color, EPS file to be Supplied by Customer

Egg Crate: None

Lights: Customer Supplied

Electrical work to be Done by Others

1 Permits to be Supplied by Customer if Necessary

1 Includes Removal and Installation

Conditions: All material is guaranteed to be as specified. All work to be completed in a professional manner according to standard practices. Any alteration or deviation from the above specifications involving extra costs will be executed only upon written orders and such charges will become part of this agreement. All agreements contingent upon strikes, accidents, or delays beyond our control. Owner to carry fire, tornado, and other necessary insurance. Our employees are covered by Worker's Compensation Insurance. All work listed above is considered custom made and non-refundable. A finance charge of 1.5% (18% per annum) will be added to all past due invoices. Collection and attorneys fees will be assessed to all accounts placed for collection.

Subtotal \$4,226.00

5 % Sales Tax \$211.30

Total \$4,437.30

Thank you for allowing us this opportunity to provide a quote. We look forward to working with you.

Terms

Purchase order or contract with approved credit or 50% down payment required to schedule, balance due at time of installation.

Payment Options: Cash, Check, MasterCard or Visa Credit Cards

Credit Card

Name (as it appears on card): _____

Number: _____

Expiration date: ____/____/____

Card Type: MC ☐ Visa ☐ Billing Zip Code _____

Security Code (from back of card): _____

Balance will be processed two working days after installation.

Please sign here to indicate acceptance of conditions, terms, lead-time, and price quote.

Customer

Date

Andrew Hegner

Quoted by

Andrew Hegner

10-Feb-16

Date

Oshkosh Tent & Awning Co., Inc.

110 East Fernau Avenue, Oshkosh, WI 54901

800-861-9341 Ph: 920-235-3170 Fx: 920-235-7100

www.otainc.com

QUOTE

Quote Valid for 60 Days

Sold To:

Your Daily Grind

Attn: Tim Lenth

204 Main St.

Menasha, WI 54952

Phone: 920-858-1688

Email: tjlenth@yahoo.com

Install At:

Same

County: Winnebago

Quote Date: 02/10/16

Lead Time: 4-6 Weeks

Qty	Description	Unit	Price
<u>Remove Awnings and Recover</u>			
1	5' 0" Height X 6' 7" Width X 8' 0" Projections Make Frame Modifications to Finish Edge to Accept Material Not Covering any of the Vertical Supports that have Existing Covers Take Down Awning on Right Connected to Entrance Canopy Customer will take down awning on left when facing front of building	\$4,620.00	\$4,620.00
1	3' 0" Height X 5' 8" Width X 5' 0" Projection	\$2,820.00	\$2,820.00
Fabric: Cooleybrite Lite Graphics: YES, Eradicated Two Color, EPS file to be Supplied by Customer Color: TBD Egg Crate: None PVC Trim: TBD Lights: Customer Supplied Valance: none Electrical work to be Done by Others			
1	Permits to be Supplied by Customer if Necessary		
1	Includes Removal and Installation		

Conditions: All material is guaranteed to be as specified. All work to be completed in a professional manner according to standard practices. Any alteration or deviation from the above specifications involving extra costs will be executed only upon written orders and such charges will become part of this agreement. All agreements contingent upon strikes, accidents, or delays beyond our control. Owner to carry fire, tornado, and other necessary insurance. Our employees are covered by Worker's Compensation Insurance. All work listed above is considered custom made and non-refundable. A finance charge of 1.5% (18% per annum) will be added to all past due invoices. Collection and attorneys fees will be assessed to all accounts placed for collection.

Subtotal \$7,440.00

5 % Sales Tax \$372.00

Total \$7,812.00

Thank you for allowing us this opportunity to provide a quote. We look forward to working with you.

Terms

Purchase order or contract with approved credit or 50% down payment required to schedule, balance due at time of installation.

Payment Options: Cash, Check, MasterCard or Visa Credit Cards

Credit Card

Name (as it appears on card): _____

Number: _____

Expiration date: ____/____

Card Type: MC ☐ Visa ☐ Billing Zip Code _____

Security Code (from back of card): _____

Balance will be processed two working days after installation.

Please sign here to indicate acceptance of conditions, terms, lead-time, and price quote.

Customer

Date

Andrew Hegner

Quoted by

Andrew Hegner

10-Feb-16

Date

Quote

Erick Griffin Construction
112 Richard Ave Neenah
920-858-3084

Date: March 11, 2016
Expiration Date: May 31,
2016

To Becky Mader
Your Daily Grind
204 Main St
Menasha, WI 54952
920-659-2422
Customer ID [No.]

Salesperson	Job	Shipping Method	Shipping Terms	Delivery Date	Payment Terms	Due Date
-------------	-----	-----------------	----------------	---------------	---------------	----------

Due on receipt

Qty	Item #	Description	Unit Price	Discount	Line Total
-----	--------	-------------	------------	----------	------------

1		Install service widow in concrete wall, Cut out concrete, Reinforce opening			1600.00
---	--	---	--	--	---------

Total Discount

Subtotal

Sales Tax

Total 1600.00

Quotation prepared by: Erick Griffin _____

This is a quotation on the goods named, subject to the conditions noted below: (Describe any conditions pertaining to these prices and any additional terms of the agreement. You may want to include contingencies that will affect the quotation.)

To accept this quotation, sign here and return: _____

Thank you for your business!

[Company Name] [Street Address, City, ST ZIP Code] [phone] [fax] [email]

PROPOSAL

Sellcrest Construction LLC
600 S Westland Dr
Appleton WI 54914

PROPOSAL NO.

SHEET NO.

DATE

March 8-16

PROPOSAL SUBMITTED TO:

NAME	Your Daily Grind
ADDRESS	204 Main St.
	Menasha, WI 54952
PHONE NO.	(920) 659-2422

WORK TO BE PERFORMED AT:

ADDRESS	
DATE OF PLANS	
ARCHITECT	

We hereby propose to furnish the materials and perform the labor necessary for the completion of _____

Cost of Window & Labor To
Install on east side of Building
For Pass Thru at 204 Main Street

All material is guaranteed to be as specified, and the above work to be performed in accordance with the drawings and specifications submitted for above work and completed in a substantial workmanlike manner for the sum of One Thousand

Six Hundred and Seventy Five dollars Dollars (\$ 1675.00)

with payments to be made as follows.

Any alteration or deviation from above specifications involving extra costs will be executed only upon written order, and will become an extra charge over and above the estimate. All agreements contingent upon strikes, accidents, or delays beyond our control.

Respectfully submitted

David M. Sell
Per Sellcrest Construction LLC

Note — This proposal may be withdrawn
by us if not accepted within 30 days.

ACCEPTANCE OF PROPOSAL

The above prices, specifications and conditions are satisfactory and are hereby accepted. You are authorized to do the work as specified. Payments will be made as outlined above.

Signature _____

Date _____

Signature _____

Wisconsin Association of Historic Preservation Commissions

2016 Historic Preservation Excellence Awards



2015 Honorable Mention in Restoration/Rehabilitation Category
De Pere Lock Tender's House – Photo Credit: Amy Ritter

The Wisconsin Association of Historic Preservation Commissions is accepting nominations for its **2016 Historic Preservation Excellence Awards**. Award categories are listed below.

Award Categories

- 1) Identification and designation – This award would go to a historic preservation commission that sponsored a significant architectural or archaeological survey, the nomination of a property (or properties) to the State and National Register of Historic Places, or designation as a local landmark.
- 2) Economic Redevelopment/Revitalization – This award would go to a private non-profit group or historic preservation commission that used accepted preservation practices as tools in revitalizing an area or neighborhood.
- 3) Restoration/Rehabilitation – This award would go to a private non-profit organization or historic preservation commission for the significant restoration or rehabilitation of a local historic property.
- 4) Historic Preservation Commission – This award would go to a historic preservation commission that through the exercise of its project review authority, made a significant difference in the outcome of a particular property or project.
- 5) Advocacy – This award would go to either a historic preservation commission or a private historic preservation organization for its advocacy work that had a real and beneficial impact on the local community.

Nomination must be postmarked or received by March 18, 2016. Submit nominations to:
Arlan Kay, Architecture Network, Inc., 116 East Dayton Street, Madison, WI 53703
Awards will be presented at WAHPC's Spring Conference at Heritage Hill State
Historical Park on April 22, 2016.

Describe why you feel the nominee deserves this award. Separate attachments are acceptable.
(Please be sure to include information about the individuals who were involved and what
their contributions were to the success of the project):

Nominee address (Please include contact info):

Award Category (choose one from the list above):

Nominee name

Nominated by (name and contact info):