

Using Your Citrus County Evacuation Map

1. Locate where you live and work on the map or online at "Know Your Level" (floridadisaster.org/knowyourzone).
2. Determine whether you are in an evacuation area, and if so, what level (color).
3. If you are in an evacuation area, or live in a mobile home, boat, or RV, decide where you will go if ordered to evacuate. Your choices include:
 - o Home of a relative or friend outside the evacuation level.
 - o Hotel/motel outside the evacuation level (make arrangements early).
 - o Go to a public evacuation shelter.
 - o As a last resort, leave the area entirely.
4. If you must go to a public evacuation shelter, use your county map to decide which one is convenient. Make sure you verify that the evacuation shelter is open **before you go**.

If you live in an area ordered to evacuate, gather your family/pets and emergency supplies, secure your home, and leave the evacuated area. Failure to obey an evacuation order is a violation of state and local laws.

NOTE: All persons living in mobile homes, boats, RVs, and manufactured homes must evacuate for all evacuation orders, regardless of where you are located in the county, due to threat of tornado or high velocity winds.

NOT ALL SHELTERS MAY BE OPEN!

Citizens are urged to listen to local television or radio stations, or visit the Sheriff's Office website, sheriffcitrus.org, to find out which shelters are going to be opened.



Hurricane Threat

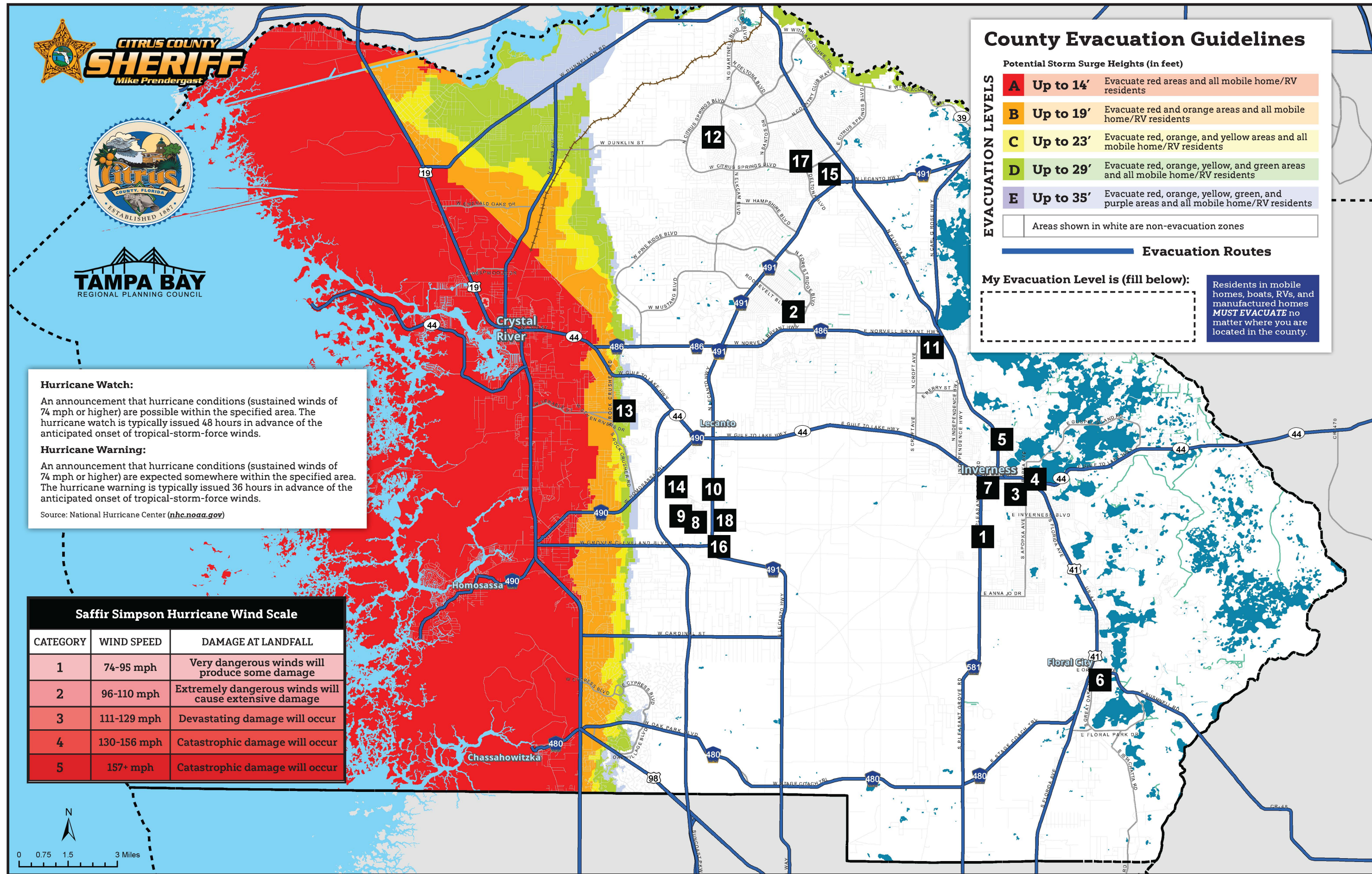
The color coded areas on the map are vulnerable to storm surge. Storm surge is produced by water being pushed towards the shore by the force of the winds moving around the storm.

Storm surge creates a path of destruction, wiping out structures as it rapidly surges inland and then recedes. This is a life threatening situation for anyone who ignores evacuation orders and stays in vulnerable areas.

Hurricanes are categorized on a scale of 1 to 5, depending on wind strength and destructive power.

Find your closest Evacuation Shelter on the map.

#	Evacuation Shelter	Address
1	PLEASANT GROVE ELEMENTARY SCHOOL	630 PLEASANT GROVE ROAD, INVERNESS
2	FOREST RIDGE ELEMENTARY SCHOOL	2927 NORTH FOREST RIDGE BLVD., HERNANDO
3	CITRUS HIGH SCHOOL	600 WEST HIGHLAND BLVD., INVERNESS
4	INVERNESS PRIMARY SCHOOL	206 SOUTH LINE AVENUE, INVERNESS
5	INVERNESS MIDDLE SCHOOL	1950 U.S. HIGHWAY 41 NORTH, INVERNESS
6	FLORAL CITY ELEMENTARY SCHOOL	8457 EAST MARVIN STREET, FLORAL CITY
7	WITHLACOCHEE TECHNICAL COLLEGE (RECEPTION CENTER)	1201 WEST MAIN STREET, INVERNESS
8	LECANTO PRIMARY SCHOOL	3790 WEST EDUCATIONAL PATH, LECANTO
9	LECANTO MIDDLE SCHOOL	3800 WEST EDUCATIONAL PATH, LECANTO
10	LECANTO HIGH SCHOOL	3810 WEST EDUCATIONAL PATH, LECANTO
11	HERNANDO ELEMENTARY SCHOOL	2975 E TRAILBLAZER LANE, HERNANDO
12	CITRUS SPRINGS ELEMENTARY SCHOOL	3570 WEST CENTURY BLVD., CITRUS SPRINGS
13	ROCK CRUSHER ELEMENTARY SCHOOL	814 SOUTH ROCK CRUSHER ROAD, HOMOSASSA
14	CREST SCHOOL	2600 SOUTH PANTHER PRIDE DRIVE, LECANTO
15	CITRUS SPRINGS MIDDLE SCHOOL	150 WEST CITRUS SPRINGS BLVD., CITRUS SPRINGS
16	CENTRAL FLORIDA COMMUNITY COLLEGE	3800 SOUTH LECANTO HIGHWAY, LECANTO
17	CENTRAL RIDGE ELEMENTARY SCHOOL	185 WEST CITRUS SPRINGS BLVD., CITRUS SPRINGS
18	RENAISSANCE CENTER	3630 WEST EDUCATIONAL PATH, LECANTO



IMPORTANT CONTACT INFO.

POLICE, FIRE, EMS EMERGENCIES	9-1-1
CITRUS COUNTY SHERIFF'S OFFICE ADMINISTRATION	352-726-4488
CITRUS COUNTY SHERIFF'S OFFICE EMERGENCY MANAGEMENT	352-249-2700
CITRUS COUNTY TRANSIT	352-527-7630
LECANTO GOVERNMENT BUILDING	352-527-5200
CITRUS COUNTY HEALTH DEPARTMENT	352-527-0068
CITRUS COUNTY PUBLIC WORKS	352-527-5477
CITRUS COUNTY ANIMAL SERVICES	352-746-8400
CITRUS COUNTY SHERIFF'S OFFICE ANIMAL CONTROL	352-249-2790
CITRUS COUNTY SOLID WASTE MANAGEMENT	352-527-7670
CITRUS COUNTY SCHOOL BOARD	352-726-1931
CITRUS COUNTY BUILDING DIVISION/ FLOOD MANAGEMENT COORDINATOR	352-527-5310
NATURE COAST VOLUNTEER CENTER	352-527-5959
CITY OF INVERNESS ADMINISTRATION	352-726-2611
CITY OF INVERNESS PUBLIC WORKS	352-726-2321
CITY OF INVERNESS DEVELOPMENT SERVICES	352-726-3401
CITY OF CRYSTAL RIVER ADMINISTRATION	352-795-4216
CITY OF CRYSTAL RIVER PUBLIC WORKS	352-795-4216 x314
CITY OF CRYSTAL RIVER BUILDING & ZONING	352-795-4216 x306
FLORIDA HIGHWAY PATROL	1-866-369-4613
FLORIDA FISH & WILDLIFE CONSERVATION COMMISSION	904-359-6585
AMERICAN RED CROSS	1-800-RED-CROSS (1-800-733-2767)
SALVATION ARMY (CITRUS COUNTY)	352-513-4960
UNITED WAY OF CITRUS COUNTY	352-795-LIVE (5483)
DUKE ENERGY (TO REPORT OUTAGES)	1-800-228-8485
SUMTER ELECTRIC COMPANY (TO REPORT OUTAGES)	1-800-732-6141
WITHLACOCHEE RIVER ELECTRIC COOP (TO REPORT OUTAGES)	352-567-5133
CITIZEN INFORMATION & RUMOR CONTROL LINES ARE OPEN DURING EMERGENCIES	352-249-2775
DO NOT CALL 9-1-1 FOR DISASTER INFORMATION	

Citrus County Flood Management

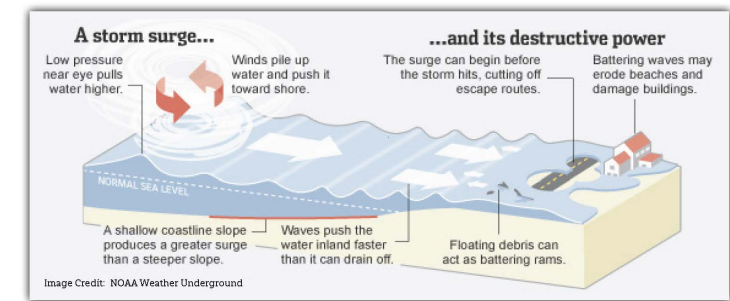
Flood Insurance Mandatory Purchase Requirement: Flood insurance is mandatory for all federal or federally-related financial assistance for the acquisition and/or construction of buildings in Special Flood Hazard Areas (SFHAs). An SFHA is defined as any A or V flood zone on a Federal Emergency Management Agency (FEMA) Flood Insurance Rate Map (FIRM). Property owners can purchase building and contents coverage from any local property and casualty insurance agent.

To find a local insurance agent that writes flood insurance in your area visit floodsmart.gov.

Citrus County provides flood zone information based on our community's Flood Insurance Rate Maps (FIRM's). Citrus County provides information regarding flood zone designation, Letters of Map Amendments, copies of Elevation Certificates and/or Flood Proofing Certificates, Floodplain Determination Letters, historic flood information, mitigation activities, and retrofitting techniques.

The Citrus County Board of County Commissioners (BOCC) website provides a link to the current digital FIRM maps, which can be accessed and located by address via gis.citrusbocc.com.

For more information, contact: Karla Grzeca, CFM at karla.grzeca@bocc.citrus.fl.us or 352-527-5310.



Social Media Accounts

- [facebook.com/sheriffcitrus](https://www.facebook.com/sheriffcitrus)
- twitter.com/sheriffcitrus

Follow us on social media @[sheriffcitrus](https://twitter.com/sheriffcitrus) and download the free app for Citrus County Sheriff's Office via Google Play or in the App Store.

Emergency Alert Stations

TELEVISION	RADIO
WUFT CH. 5	WXVC 95.3 FM
WFLA CH. 8	WXOF 96.3 FM
WTSP CH. 10	WSKY 97.3 FM
WTVT CH. 13	WKTK 98.5 FM
WCJB CH. 28	WRUF 03.7 FM
WTOG CH. 44	WRZN 720 AM
SPECTRUM: ALL CHANNELS	STRS 920 AM
	WINV 1560 AM