



CHELSEA POLICE



Reaching Out
ANNUAL REPORT
2011



Chiefs Message	3
City Manager's Message	4
Dedication	5 - 6
Highlights in CPD History	7
City Demographics	8
Mission Statement	9 - 10
Professional Standards Division	11 - 20
Organization	11 - 14
Personnel	15 - 16
Awards & Recognition	17 - 18
Administration	19 - 21
Office of Chief	22 - 31
Fiscal Management	24 - 26
Operations	27 - 30
Internal Affairs	31
Community Services Division	32 - 38
Court Prosecutor	32
Traffic Unit & Operations	33 - 34
Community Outreach	35 - 38
School Resource Officers	35
Patrol Division	39 - 43
Patrol Sectors	40
K-9 Unit	42 - 43
Criminal Investigation Division	44 - 52
High Profile Cases	44
Gang & Firearms Related Incidents	45
Licensing & Evidence Unit	46
Underage Alcohol Drinking Enforcement	46
Property Crimes Unit	47
Narcotics and Vice Unit	48
Domestic Violence Unit	49
Casa Divert	49
PACT	50
Sexual Assault Investigations Unit	51
Insurance Fraud	52
Crime Statistics	53 - 57
Acknowledgement	58

A letter from
Chief of Police
Brian A. Kyes

Chelsea of Police
Chelsea Police Department
19 Park Street
Chelsea, Massachusetts 02150
Office (617) 466-4810 Fax (617) 466-4850
Email: bkyes@chelseama.gov



On behalf of the fine, hardworking men and woman of the Chelsea Police Department I am extremely enthusiastic once again as I begin my fifth year as the City's Police Chief to present the 2011 CPD Annual Report. In the pages that follow you will see that the Chelsea Police Department continues to lead the way through the current adversity and continuing challenges confronting us all across the state and the nation by maximizing our available resources and finding innovative and creative ways to support our mission in providing for the safety and security of all the members of our Community. Our sworn officers and civilian support staff continue to be completely Committed and dedicated to our respective areas of responsibility and to the community that we so faithfully serve.

The Chelsea Police Department has undergone some meaningful changes over what has been a much improved year in reducing violent and property crime in its ongoing and continuous quest towards becoming the best full service community policing organizational structure in providing the optimum level of service and protection to the community in the state.

During the last year the CPD sought additional ways to be able to disseminate, store, and view much of the public safety information that is generated and transmitted in an effort to provide enhanced public safety for the community. In 2011 the CPD leaped into a new technological era with the following initiatives; creation of the Crime Analysis Unit; adoption of the Digital Headquarters System (DHQ) to professionalize Roll Calls; purchase of MyPD Police Smartphone Application; and creation of the CPD You Tube Channel. These innovations will allow for more timely exchange of valuable information which will be utilized to enhance public safety.

As we move into 2011 and beyond we continue to look at new initiatives and projects stemming from feedback received during the evaluation and assessment of our policing tactics, strategies, policies and programs revealed during the accreditation process over the past several years. We pledge to further incorporate technology, accountability and ingenuity in combating crime and addressing those quality of life issues that lead to further crime. We will continue to work under a community policing model utilizing the concept of "smart policing" and community engagement working as efficient and effective as possible despite any ongoing fiscal pressures that may exist relating to the State's economy resulting in some difficult legislative choices.

In closing, you have our unyielding commitment to continue our tireless efforts to ensure that the City of Chelsea remains one of the most vibrant and up and coming cities in the Commonwealth. With your ongoing support, collaboration and assistance I am extremely confident and exceptionally optimistic that we will be successful despite any pressures and challenges that we may face.

Sincerely,

A handwritten signature in black ink that reads "Brian Kyes". The signature is written in a cursive, flowing style.

Brian A. Kyes
Chief of Police





Jay Ash
City Manager

CITY OF CHELSEA

Executive Office
City Hall, Room #302, 500 Broadway
Chelsea, Massachusetts 02150
Telephone (617) 466-4100 / Fax (617) 466-4105
Email: jash@chelseama.gov



April 5, 2012

Dear Reader:



Through tireless preparation, selfless performance and demanding self-assessment, the Chelsea Police Department continues to perform with great distinction. The efforts of our gallant men and women in blue lead to so many noble results. Despite the difficulties of protecting the public during these changing public safety times, the accomplishments of CPD merit great admiration. We here in Chelsea do admire and are impressed with the results and are fortunate to be served by one of the most responsive and responsible law enforcement departments in the country.

Fighting crime is the basic mission of any local police department. As has become the standard of the local crime-fighting force, the officers and their superiors of CPD excel in areas from beat patrols to major crime investigations. Today, though, in addition to traditional policing activities, CPD is so much more. Officers on bike patrol, with their canine or standing in neighborhoods and engaging local residents are supporting efforts to both suppress illegal activities and engender a feeling of safety that allows for so much else to then be realized. Partnerships that CPD has forged with community-based organizations, the business community and the general public are advancing so many causes in a way that only the increased performance of and confidence in our police force can secure.

CPD is led by a very capable chief, Brian Kyes, and a command staff that nurtures and directs a cohesive organization able to address a wide range of community needs. That role, as well as the role CPD willingly accepts in the leadership of regional law enforcement initiatives, has resulted in each and every sworn member becoming an agent for positive change. The revitalization the community enjoys and progressive reputation the City has earned for professionalism and service is being advanced by the work CPD officers perform, individually and through collaborations inside and beyond the local jurisdiction. Whether on the more traditional enforcement role, or through its expanding work on prevention and intervention activities, CPD is making a difference in Chelsea and helping to better define how a contributing law enforcement organization serves in this 21st Century.

Testament to CPD's philosophy and professionalism can be found in the achievement and now maintenance of the department's "accreditation" status. That accreditation provides a window through which observers can be assured of the commitment CPD has made to be the very best it can be. Of course, those of us who have long relied upon and admired the members of CPD have always known that our public safety and overall well-being could not be entrusted to better stewards. I am proud to work with CPD and remain ever grateful for all that our officers do to support our great community.

Respectfully Submitted by,

Jay Ash
City Manager



In Memorium

The 2011 Annual Report is dedicated to the people who have given the ultimate sacrifice providing protection, safety, and public service to the ones they served and the loved ones affected by their loss. It is the support by dedicated community members, neighbors, businesses, organizations, parents, teachers, leaders, families, superiors, and political dignitaries, such as the late Councilor Mekonnen who provide the much needed energy to persevere through the affects of crime and its impact on our society.



Photo of the late City Councilor
Michael Mekonnen

Councilor Michael Mekonnen The men and women of the Chelsea Police Department honor his legacy. Councilor Mekonnen was a dedicated visionary who was often the eyes and ears for the police and an avid supporter. Councilor Mekonnen always recognized accomplishments and stood extremely proud of the commitment and work demonstrated by the Chelsea Police Department, his colleagues, and the public he served. Councilor Mekonnen was often seen walking in and around the neighborhoods specifically looking for types of activity detrimental to the Community. Mekonnen worked tirelessly to improve the quality of life in the City of Chelsea. We ask that the Community continue to reflect on his great character and remember Councilor Mekonnen for the work that he did and this year was a reflection of what he accomplished. Please continue his mission by working together with the police to take action in the City of Chelsea.

Sergeant James O'Brien Heroes demonstrate heroic qualities and are often admired for such acts of courage, distinguished abilities, and regarded as model ideals to follow. The Chelsea Police Department grieved a loss of one of our own heroes, Sergeant O'Brien, who passed. Sergeant O'Brien retired in 2008 after providing 41 years of dedicated public service to the City of Chelsea. Sergeant O'Brien is the longest serving police officer on record and completed his career as the Department's police prosecutor. Sergeant O'Brien was a permanent fixture of all the goodness that has existed in the heritage of the Chelsea Police Department. Sergeant O'Brien displayed the highest of values you would expect in the police profession.

In Memorium

Police Officer David Wilber, Jr.
Chelsea Police Department
EOW: Saturday, July 8, 1871
Cause: Gunfire



No Photo Available

Patrolman John J. McKenzie
Chelsea Police Department
EOW: Monday, October 13, 1924
Cause: Struck by vehicle



Officer John McKenzie

Patrolman Thomas F. Gainard
Chelsea Police Department
EOW: Monday, November 3, 1930
Cause: Struck by vehicle



No Photo Available

Patrolman James E. Buckley
Chelsea Police Department
EOW: Monday, February 2, 1970
Cause: Struck by vehicle



Patrolman James Buckley

Sergeant Arthur Cashin
Chelsea Police Department
EOW: Sunday, July 20, 1980
Cause: Gunfire



Sergeant Arthur Cashin

Sergeant Raymond P. Cimino
Chelsea Police Department
EOW: Thursday, February 28, 1985
Cause: Heart attack



Sergeant Raymond Cimino



Highlights, of CPD History and Heroics

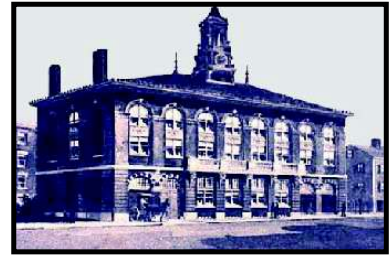


Photo: Headquarters in 1898
where it was situated at
19 Park St. Chelsea, MA.

- 1857** Established Police Department with 1st Official Log Entry
- 1871** 1st Line Of Duty Death When Officer David Wilber Jr. Killed by Gunfire
- 1912** 1st Motorized Vehicle Purchased
- 1984** Department's 1st Computer Operation at Headquarters
- 1998** 1st CPD Website Available On Internet
- 2003** Chelsea Police Attained State Certification
- 2004** Gang Task Force Sub-Station Opened
- 2005** 34 Surveillance Cameras Installed for Homeland Security and Safety
- 2007** Chelsea Police Detectives Awarded Medal of Valor
- 2008** Drug Unit Seized over \$317K Related to Illegal Street Narcotics And Sales
- 2009** Newcomer Program Adopted for Immigrant and Refugee Population
- 2010** CPD Announced as State Accredited Law Enforcement Agency
- 2011** Chelsea Police Officers Awarded State Hanna Award



a glance at the city

Population Chelsea is an urban city surrounded on the borders by Boston, Everett, Revere, East Boston, and the Mystic River. It is the smallest city in Massachusetts in land area, and the 26th most densely populated incorporated place in the country. As of the census of 2000, there were 35,080 people, 11,888 households, and 7,608 families residing in the city. The population density was 16,036.8 people per square mile (6,184.7/km²), placing it among the highest in population density among U.S. cities. As of the Census of 2010, the population was estimated at about 35,110, with an estimated 13,747 (38%) foreign-born individuals. 64% percent of Chelsea's population speaks a language other than English at home. A majority (81%) of these immigrants are from Latin America and 53% of the City's entire population speaks Spanish. The City is a location for more than 1700 businesses.

A view of US-1 and the historic Tobin Bridge as it rests over Chelsea, and the Mystic River before connecting into Boston. On June 8th of 2011, Sgt. Michael Nee and Officer James Guido saved a man from jumping off this bridge.



Transportation The City is at the epicenter of major highways including US-1, Route 16, Meridian St. and the newly constructed Chelsea Street bridge. There are five different commuter bus routes through the densely populated city. The Newburyport/ Rockport Purple Line has a commuter rail station at Arlington and Sixth Streets in Chelsea — just one stop to North Station in Boston where it hosts more than 20 million visitors every year. The City of Boston, the Capital of Massachusetts boasts a population of approximately 617,594 people according to the U.S census of 2010. The Greater Boston Metropolitan area which includes Chelsea is a home to 4.5 million people and is the tenth largest metropolitan area in the country. The Greater Boston as a commuting region is home to 7.6 million people, making it the fifth largest combined statistical area in the United States.



Photo: The new Chelsea Street Bridge which connects Chelsea to Boston. During the construction of the new bridge, Chelsea police officers were deployed to re-direct traffic while it remained closed during the second half of 2011. The project is to be completed in the Spring of 2012.



The Mission We, the members of the Chelsea Police Department, are Committed, take Pride and are Dedicated to the needs of our community in the delivery of quality police services in an effective, responsive and professional manner.

Recognizing and accepting our responsibility to maintain order while affording dignity and respect to each and every individual that we encounter. Our objective is to improve the quality of life through community and inter-agency partnerships to thereby promote a safe and secure community for all.



Values We, the members of the Chelsea Police Department, are dedicated police professionals committed to the community we serve, sensitive to the needs and wants of our citizens, holding ourselves accountable to the highest standards of excellence and integrity and treating all citizens that we encounter with respect and dignity.

Vision To optimize the efficient use of police resources, the Chelsea Police Department maintains a balance between responding quickly and professionally to all forms of crime, emergencies, and homeland security concerns while also actively engaging the community we serve in setting priorities for the Department as well as collaborating on problem solving and crime prevention efforts and approaches.

Mission

Values

Vision

Commitment
Pride
Dedication



Professional Standards
Administration Division

Captain Kenneth MacDonald
Sgt. David Flibotte
Training & Recruitment
Helen Ramirez
Accreditation/Office Manager
Kathy Darragh
Myra Sanchez
Records Management
Alan Jussif
IT Support - City of Chelsea



A view from
Chelsea
Square of the
current
Headquarters
for Chelsea
Police
situated at
19 Park Street
in Chelsea,



Staffing Levels in 2011

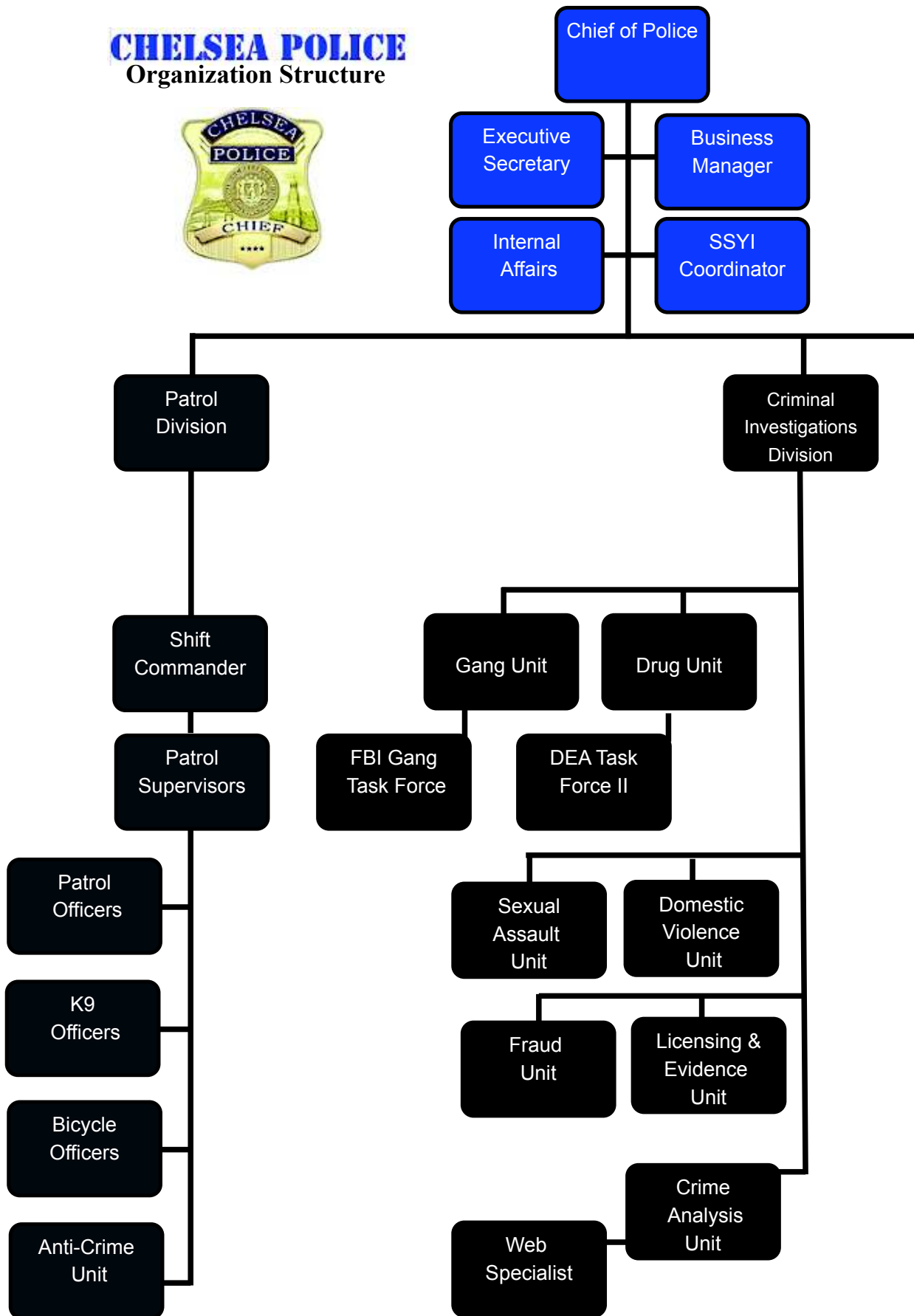
Fleet in 2011

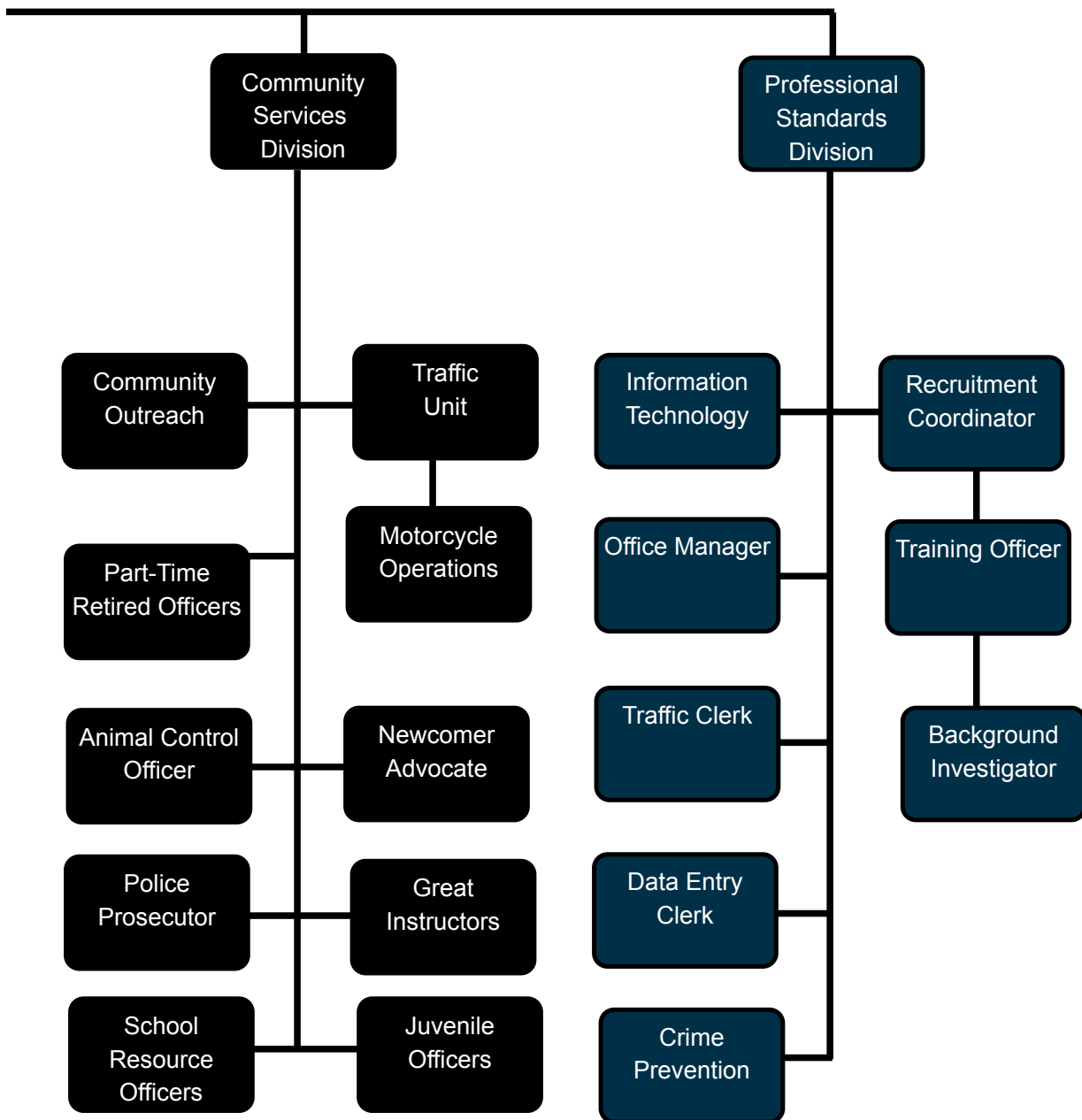
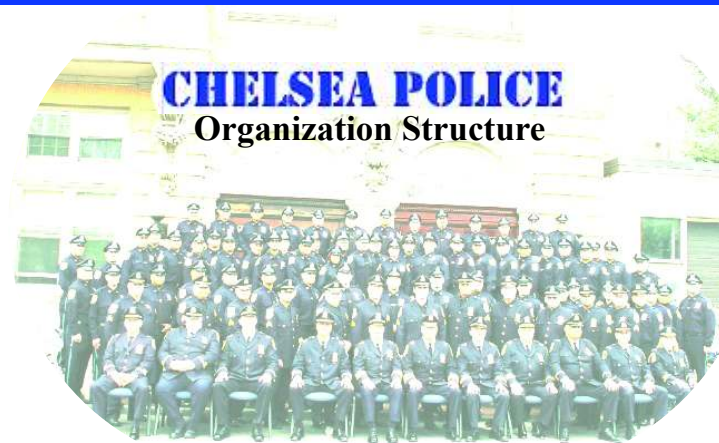
Chief	1	Marked Cruisers	23
Captains	4	Support Vehicles	19
Lieutenants	8	Motorcycles	3
Sergeants	14	Special Event Trailers	2
Patrol Officers	71	Motorcycle Trailer	1
Total Sworn Officers	98	Radar Trailer	1
Male	90	Other	5
Female	8	Total	54
Hispanic	24		
Asian	1		
Black	2		
Animal Control Officer	1		
Civilians	8		

* 2 Officers on Injury Leave
1 Military
4 Academy Training through November

CHELSEA POLICE

Organization Structure





superior quality

98 %

Superior Officers have earned a Bachelor's Degree or higher education

higher education

> 50 %

of Department have earned a College Degree

military experience

> 50 %

of Department have served in the United States Military and are Veterans of Service

diversity and equal opportunity

1

2011 marked the first year of an Asian American Chelsea Police Officer



enduring freedom

Sgt. Robert Griffin has been with the Chelsea Police Department since June of 1987 and was promoted to Sergeant in March of 2004. Sgt. Griffin is a member of the Chelsea Police Community Services Division and serves as a specialist in the many facets of the organization's operation. Sgt. Griffin was deployed into Operation Enduring Freedom in 2010 where he participated in the United States allied force efforts to combat terrorism under President Barrack Obama. His last duty station was with the US Special Operations Command until he returned home safely in 2010 following the completion of the mission. Sgt. Griffin is returning to the Community Services Division in 2012 to continue public service to his hometown, Chelsea, MA.



Retirement

Maureen Dunn was honored by the Chelsea Police Department in 2011 following her retirement in 2010 for her exceptional public service to the community for nearly thirty years.

The department was graced with her presence from 1974 to 2010. Mrs. Dunn was the heart of the police department and was well loved from her dedication and support to those who had the opportunity to work with her. During her tenure Mrs. Dunn made significant contributions towards the improvements of the police department as it worked towards achieving state certification and accreditation.



Detective Robert Lewin completed a 34 year career with the Chelsea Police Department. Detective Lewin's achievement is remarkable and his service combined with his good character will always be missed. His peers describe him as having many outstanding values, and for those who know him best credit his character to his devotion to service, professionalism, and concern for others.

Detective Lewin is a credit to himself for his good character, dignity, and class.

During his lengthy career he served in many key roles but even after 34 years at his retirement he was still considered the go-to guy.



To Serve and Protect

New Officers

Officers David Batchelor Jr., Steven Garcia, Star Chung and Officer Carlos DelCompare during their oath ceremony at City Hall. (right)



On April 15, 2011 Officer Luis Tarraza was officially sworn in as a Permanent Full Time Chelsea Police Officer. Officer Tarraza was the 1st officer to take oath in 2011.



Promotions

Photo: Left to Right Lt. Edward Conley, Chief Brian Kyes, and Sgt. John Bower during the swearing in ceremony held at City Hall.





To Serve and Protect

Hanna Award Chelsea Police Officers Joseph Capistran, Felix Rivera and Thomas McLain Jr. were acknowledged by the Hanna Awards Committee for their outstanding efforts with their respective arrests and seizures of firearms. All three received the Trooper George I. Hanna Meritorious Recognition Award on Friday, November 18, 2011. Governor Deval L. Patrick and Secretary Heffernan presented the awards at the House Chambers at the State House, Boston.



Photo: Left to Right, State Lieutenant Governor Timothy P. Murray, Chelsea Police Officers Felix Rivera, Joseph Capistran, and 71st MA Governor Deval Patrick at the George L. Hanna awards during a Nov. 18th ceremony at the state house. Credit: Seth Daniel



Photo: Left to Right, State Rep. Kathi-Anne Reinstein, Patrol Division Commander - Captain David Batchelor, Chelsea Police Officer's Felix Rivera, Joseph Capistran, Thomas McLain Jr., and Chief of Police Brian Kyes joined together after officers recieved the 'Medal of Valor' at the George L. Hanna awards ceremony at the State House. Credit: Seth Daniel



To Serve and Protect



Officer Robert Hammond was awarded the Gallantry Star for outstanding police work going above and beyond the call of duty during an arrest of an armed suspect and the recovery of a loaded firearm. Chelsea Police Officers are awarded the Gallantry Star Award by the Chief of Police for an act of distinguished bravery in the arrest of a person who is a major threat to the welfare of the community and/or the officer.



Officer Paul McCarthy came to the aid and rescued two toddlers at a carnival that were pinned and being dragged in an amusement ride. Officer Paul McCarthy was working a paid detail and monitoring the carnival grounds when he was alerted by loud yelling and screaming from a carousel type ride. Officer McCarthy observed a young child being dragged into the rear wheel well of the moving ride and a second young child attempting to pull the first child off of the moving carousel. The second child then became pinned. The operator of the ride immediately stopped the ride as Officer McCarthy raised the several hundred pound section of ride in the air to a sufficient height enabling the operator to pull both victims free.



Officer James Guido and Sergeant Michael Nee saved a man from jumping off Tobin Bridge. Officers were working a police detail in the area when they observed the male walking quickly up the ramp. The male was walking near the safety railing, then began to climb over the barrier while making statements that he was going to end his life. Both Chelsea Officers quickly moved toward him and were able to forcibly pull him back over the rail.





Training and Recruitment

Examination Orientation Seminar

On April 6, 2011 Chief Brian Kyes and Sergeant David Flibotte, in coordination with the Massachusetts Human Resources Division, conducted a joint-presentation open to all Chelsea residents, held an Examination Orientation Seminar at the Public Library. The Seminar was designed to help residents take and successfully pass the civil service test for police officer. Notices were sent to all residents who signed up for the test, and almost 40 people attended.

Recruitment Event

Chelsea Police Department's Recruitment and Training unit attended the City of Chelsea's National Night Out event held in August. Sergeant David Flibotte spoke with residents, provided literature, and encouraged those interested in the profession to consider law enforcement as a career choice.

Promotional Examination

The Department's Promotional Examination for Captain, Lieutenant, and Sergeant took place on October 15, 2011. Prior to this date the exam had been announced to all sworn officers and posted in five locations inside Headquarters to encourage participation. The examinations were administered by the Massachusetts Human Resources Division.

College Internship

Chief Kyes and the Department entered into an agreement with Salem State University to assist some college seniors who are criminal justice majors. A group of four (4) interns worked approximately (12) hours per week from the end of May to August of 2011. The Department organized a more structured program to provide the interns some exposure to the different facets of the police department. The internship rotation included court, E-911 communications, Criminal Investigation, Technology, Records, and Patrol.



Recruitment of New Officers

In 2011, (5) additional officers were hired and completed training. The Recruiting and Training Unit facilitated this process which included:

- Extensive background investigations;

- Coordinate Physiological Exam, Medical Exam, Drug Testing and a physical abilities tests for all candidates;

- Entrance in the Police Academy Training;

- Graduation and oath;

- Written directive and policies such as Use of Force, Sexual Harassment, and Ethics,

- Schedule inspection of weapons and proficiency;

- Three months (90 days) of field training under the supervision of a specially trained Chelsea Police Officer's.



Pictured on the left Chelsea Police Chief Brian A. Kyes, center, Helen Ramirez, and on the right Captain Kenneth MacDonald holding the plaques after the Accreditation Committee announced Chelsea Police Department as an accredited police department in 2010.



A Hard Act to Follow

Commitment

In his final year before retirement in 2012, Captain Kenneth MacDonald continued his role leading the Department through Professional Standards.

Some of the accomplishments included the management and oversight of police assignments for two major roadway projects in the City of Chelsea. There were several key projects coordinated at police headquarters which included the repairs to the main elevator, cell floors, and the installment of eight additional gun lockers.

Captain MacDonald and Helen Ramirez led the Chelsea Police Department through its first full year of accreditation status after the Department was assessed by a team of assessors from the Massachusetts Police Accreditation Commission in FY11. The 365 national standards (253 Mandatory/112 Optional) reflect the best professional practices in each area of police management, administration, operations and support services.

The Chelsea Police continues to ensure that the delivery of police services in the City of Chelsea is at the highest level of professionalism and integrity possible.

Diversity & Equality

Sgt. David Flibotte successfully recruited and coordinated the training after the hiring of five new officers which brought the department staffing to 98 officers, the most ever on record. With these new appointments, the police department also reached a milestone of having 25% percent of the Department being minority, far higher than other cities with similar diverse populations.

New Civilians

Both, Myra Sanchez, and Alan Jussif are the newest members of the Professional Standards Division. Sanchez with support from Kathy Darragh manage the many facets of the Department's public and confidential records.

Jussif began his first year supporting the police department's computer system and network. Jussif made considerable progress on improving the Department's computer equipment and s preventative maintenance for the police cruiser fleet and at police headquarters.



keeping officers safe in danger

Brian A. Kyes



Chelsea Police actively participated in a national campaign focused on police officer safety. The number of officers killed in the line of duty has increased over the last few years, largely because of an alarming spike in ambush-style attacks, a Justice Department review had found.

Identification The Department were issued new Mass police state ID cards as a part of a statewide program.

Firearm Storage A total of eight additional gun lockers were installed in the garage area where officers enter and exit while transporting detainees.

Bullet Resistant Vests Chief Kyes issued a general order to the police department that went into effect on June 30, 2011. The General Order outlines when it is necessary for personnel to wear body armor protection. The guidelines were changed to minimize the risk of officer related injuries and/or death as a result of officer involved shootings. This policy was born from the federal government changing the terms under which they would issue grants for police departments to purchase bullet resistant vests. A large number of our officers were issued new vests under a state and federal grant program, replacing aging vests.

Uniform In 2011 the Chelsea Police Department transitioned to the traditional 8 point police hat.

In Service Training The Chelsea Police Department conducts yearly in-service training for all sworn members of the Department. The training includes:

1. Review of new laws and court decisions that effect how an officer performs his/her job;
2. First-Aid and CPR, which all members of the Department are trained in;
3. Use of less-lethal weapons refresher such as the Electronic Control Device (Taser) and the bean bag shot gun, when they are permitted to be used, as well as the Department's policies that govern their use;
4. Defensive tactics, which include armed/unarmed techniques used to make a lawful arrest.

Firearms Training The Chelsea Police Departments Firearms instructors, Sergeant Michael Nee and Officer John Gravalles, conduct two firearms classes per year, providing each officer with individual training. The Department contracts a specially designed firearms range to be brought to Chelsea. Each officer works one on one with an instructor during the training.

The Officers must be qualified on the Massachusetts Police Training Committee standardized training. Additionally, Chelsea Police Officer's are placed in scenario judgment training, where they make decisions on the use of their firearm.





Office of the Chief

Executive Secretary to the Chief
Mrs. Lili Morales-Deras

An IMPACT on Crime

With the support of the City Manager and the City Council, the department was able to expand the detectives assigned to the Criminal Investigation Division, Drug Unit. During the year drug enforcement efforts targeted crack and heroin distribution in the neighborhoods. The police department applied a "surge" of police presence and zero tolerance enforcement in the targeted areas. The Criminal Investigation Division (CID) continued to address underage drinking in local bars, taverns, social clubs and package stores by conducting compliance checks. During the summer months the local restaurants were targeted since it was believed that in some locations gangs involvement was potentially active by trying to gain a foothold inside of these establishments.

Crime Reduction

Crime decrease from 2010 to 2011: The Total number of UCR Crimes dropped by 3.51%. Property Crimes decreased by almost 4% and Violent Crimes decreased just under 3% from 2010 to 2011. Of note there were 11 homicides in 2010 and only 2 in 2011 a decrease of over 80%.

CPD Goals and Accomplishments In Perspective

Assigned a Full Time dedicated Crime Analyst and Part Time Civilian Crime Analyst Position (grant funded) to form Crime Analysis Unit.

Acquisition of a Microsoft Sharepoint technology known as a Digital Headquarters [DHQ] offered by Delphi Technology Solutions to strengthen the departments information sharing capacity.

Assigned Alan Jussif, Civilian Police Information Technology Specialist through City of Chelsea, to perform functions performed in the past by Sergeant Cowhig.

Improved the departments overall technology and computer systems in the marked police units.

Acquisition of (3) new police vehicles.

Implemented an Electronic Submission of Accident Report Data available to public.

Continued the strategic effort to eliminate prostitution in Chelsea by a combined effort from Patrol and CID.

Utilized FBI and ATF Task-Force Officers to specifically target illegal sales of firearms and assign an officer to the ATF regional task-force.

Conducted Reverse Stings and Underage Drinking Enforcement.

Maximized Police Presence and Enforcement through Operation "IMPACT"

Continued Community Outreach

Sustained a high level of professional practices and compliance in each area of police management, administration, operations and support services.

Engaging Police in Immigrant Communities (EPIC) Project



Chelsea Police Chief Brian Kyes, Everett Police Chief Steven Mazzie, and Malden Police Chief James Holland attend a meeting with City Mayors at the end of 2010 during the early phases of constructing a regional crime prevention program eventually forming the strategic partnership in 2011.

Regional Task Force On March 30, 2011, the Chelsea Police Department entered a Memorandum of Understanding, with the cities of Everett, Saugus, Malden, Revere and Winthrop. The six agencies now have a working partnership to address public safety concerns including, but not limited to, combating violent street gangs and associations, as well as infiltrating sophisticated drug distribution operations.

The agreement includes approximately 70 police officers (detectives, gang unit members, narcotics and vice officers, and K-9 handlers) from each department being cross-sworn as Special Police Officers conferred with full powers of arrest for all crimes including misdemeanors in each listed community.

Expansion of Drug Unit

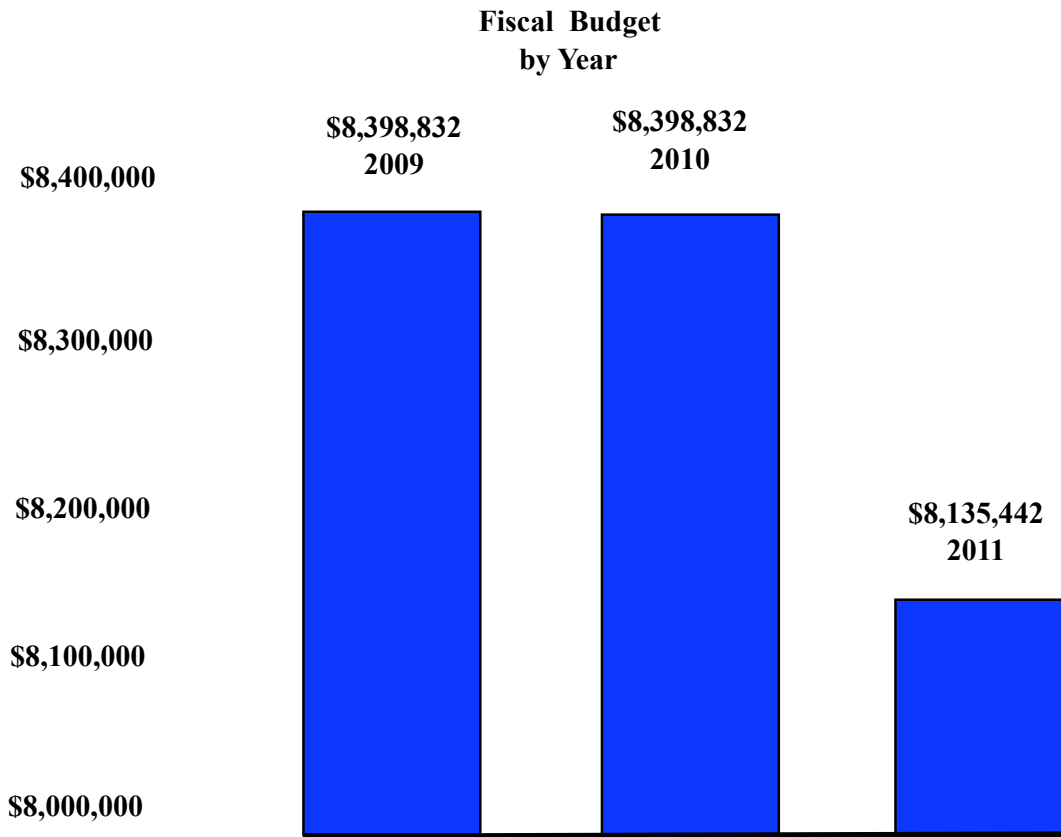
The Chelsea Police Department increased the size of the Drug Unit adding an additional Detective. A Chelsea Detective was assigned to the Regional Drug Task Force.



Left to right are Chief James Holland of the Malden Police Department, Chief Terence Reardon of the Revere Police Department and Saugus Police Chief Domenic DiMella. Standing, left to right, are Chief Brian Kyes of the Chelsea Police Department, Chief Terence Delehanty of the Winthrop Police Department and Chief Steve Mazzie of the Everett Police Department

Making a Difference

Pam Monzione is the police departments Business Manager and is responsible for oversight on matters relating to the Departmental Budget. The position provides resources, guidance and fiscal control to Division Commanders in addressing daily operations of the Chelsea Police Department. Additional responsibility includes preparing and submitting all of the applicable data for state and federal grants.

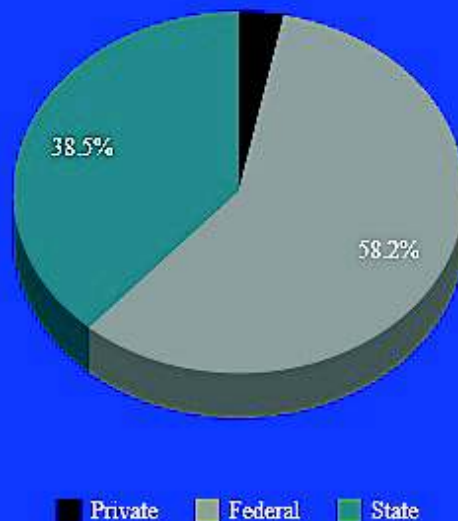


Private Grants	Award	Grant Description
School	\$ 11,530	Intervention and prevention for school related incidents.
ROCA	\$ 2,500	Prevention and Intervention for at-risk youth.
MGH	\$ 71,504.66	Newcomer advocate program for newcomers to the city for education and resource information.

State Funded Grants	Award	Grant Description
Executive Office of Public Safety and Security (EOPSS): Charles E. Shannon Jr., Community Safety Initiative	\$ 65,891	Increases gang education, suppression and intervention efforts in urban cities across Massachusetts. Partnership with the Boys and Girls Club.
EOHHS: Safe and Successful Youth Initiative	\$ 900,000	Grant is distributed between the police and our community partners to help reduce youth violence.
EOPSS: Highway Safety Division—Traffic Enforcement Grant	\$7,500	Develop or enhance effective pedestrian, bicycle and/or moped-type enforcement efforts to reduce fatalities and injuries in these areas.
EOPSS: Highway Safety Division Traffic Enforcement Grant	\$ 6,000	Supports local law enforcement participation in three traffic mobilizations targeting road rage, seat belt violations and driving under the influence of alcohol or illegal drugs.
EOPSS: Highway Safety Division—Underage Alcohol Enforcement Grant	\$ 10,000	Increases underage alcohol enforcement efforts through the implementation of initiatives such as compliance checks and surveillance programs.
EOPSS: VAWA STOP Grant	\$ 30,000	Work with victims of Domestic Violence and Sexual Abuse.
EOPSS: VAWA STOP Training Grant	\$ 1,000	Training on Domestic Violence and Sexual Assault

Federal Funded Grants	Award	Grant Description
COPS: Secure our Schools	\$ 105,500	Provides funds to improve security in schools and on school grounds.
COPS: UHP Universal Hiring FY09 - FY11	\$ 225,000	3 year grant paying \$ 25,000 towards 3 officer's salary. Ends Fy 12
COPS: CHRP FY09 - FY11	\$ 755, 892	Cops Hiring Recovery Program : Funding for 3 officers over 3 years including benefits and full salary. Ends Fy 12
OVW: Grant to Encourage Arrest Policies and Enforcement of Protection Orders	\$ 380,000	Casa Divert: 2 Year grant to establish a High Risk Assessment Team for Domestic Violence for 3 communities, government agencies and private providers.
JAG: Justice Assistance Grant	\$ 68,292	Grant is for Special Initiative for the Gang, Drug and Anti-Crime Units
BVP: Bullet Proof Vest Program	\$ 7,000	Purchase Bulletproof Vests 50 % reimbursement from the Federal Government

Grant Funding





Left- Crime Analyst Supervisor Sgt. John Cowhig, Center-Crime Analyst-Melissa Trzepacz, right- Chief Kyes.

Crime Analysis Unit

2011 marked the 1st Year of the Chelsea Police Department Crime Analysis Unit. The unit disseminated many types of daily to weekly crime related bulletins to the Department, and neighboring law enforcement agencies. In the picture below, Chief Kyes, during a meeting with the Crime Analysis Unit, discusses the deployment of patrols in the Sector 1 area of the city.





MYPD CPD Smartphone App available for Ipad, Iphone, Ipod Touch, & Android

MyPD Smartphone Application The free application can be downloaded from Apple iTunes and the Android Market place. The app includes features for police news, general inquiries, and allows the general public to send tips and photos directly to a variety of sources within the Chelsea Police Department. The Department received more than 20 app submissions in only four months since the program began in August 2011.



Photo: Scan QR Code with direct access to the Chelsea Police Department website to download app. The website will be all new in 2012.

Digital Headquarters Chelsea Police enhanced technology with the adoption of Digital Headquarters which brought an advanced Roll Call System, Incident Command resources, video capabilities, and an information based repository.

Captain Keith Houghton, Intelligence Officer Lt. Thomas Dunn, and Chelsea Detectives work in collaboration with several resources and agencies. Within the Criminal Investigation Division, the Criminal Analysis Unit began the management through ongoing development of the Microsoft Windows Sharepoint Services 3.0 software through licensing and support of Delphi Technologies, and their DHQ system. The system has merged a lot of information into one environment which will improve sharing and mobility in the future.

Special Weapons: Defensive Tactics and Tactical



CHELSEA POLICE
Criminal Investigation Division
Intelligence Center



CHQ Room Rule
By: Keith Houghton / Lt. Thomas Dunn
Revised:
Criminal Analysis Unit
By: Keith Houghton / Lt. Thomas Dunn
Chelsea Police Department
CHQ Room Rule Rule 10/10/11

Sunday, February 19, 2012 6:11:52 PM



A video based demonstration, Intelligence/Information Center, and Incident Command Resources are just a few of the features developed within the DHQ system.





Photo: CityofChelseaPD Youtube Channel available on smart tv's is a convenient way for residents to get involved by staying informed about crime, events, and public safety education.

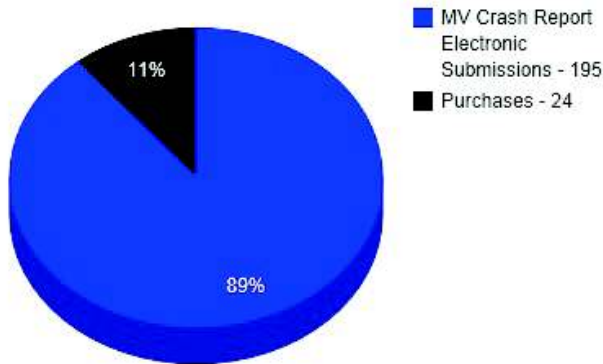
Social MEDIA

In September of 2011 the CPD registered and launched its first social media initiative on the Web. The social media site called You Tube boasts the largest population of shared videos. The CPD Channel is now live for the public through use of mobile devices, televisions, and the internet. This site allows the CPD to broadcast valuable information in video format to the community. Some of the initiatives included in this new program are geared towards enhancing crime prevention and educational material in an effort to promote and preserve public safety.



MV Crash Report Retrieval Service

September 2011 through 2012



The department introduced a document solution for operators involved in a motor vehicle crash. An accident report retrieval service was adopted through doc.view.us which offers motorists the ability and added convenience to purchase accident reports for a nominal fee through a secure electronic transaction over the web. This type of service has proved to be helpful to people that are not from the area by eliminating the need to travel to police headquarters. The system is cohesive to the motor vehicle accident reports which are electronically submitted to the Executive Office of Public Safety.

Chelsea Police Patrol Officers and the Traffic Unit responded to over 1,350 motor vehicle collisions and made 47 OUI arrests.



internal affairs

Lieutenant William Dana managed the Internal Affairs Unit in 2011. The Internal Affairs Officer conducts thorough and impartial investigations as a result of complaints submitted by citizen's, detainees, and other Chelsea Police Officers. The Unit provides citizens with a fair process for redress of legitimate complaints against officers and also protects officers from false or unfounded allegations of misconduct.

The Unit is comprised of one superior officer whose primary objective is to protect the public, protect the employee, and protect the Police Department.

In 2011, the Internal Affairs Unit conducted 33 investigations as a result of citizen complaints and/or internal officer related complaints.

Investigations Criteria

Year	2011
Investigated Complaints	33
Not Sustained	3
Sustained	5
Exonerated	10
Unfounded	8
Other	7

Year 2011

Restraint/Take Downs 16

Defensive Tactics/Strikes 7

ECD/Probes 8

ECD/Drive Stun 3

ECD Spark Display 0

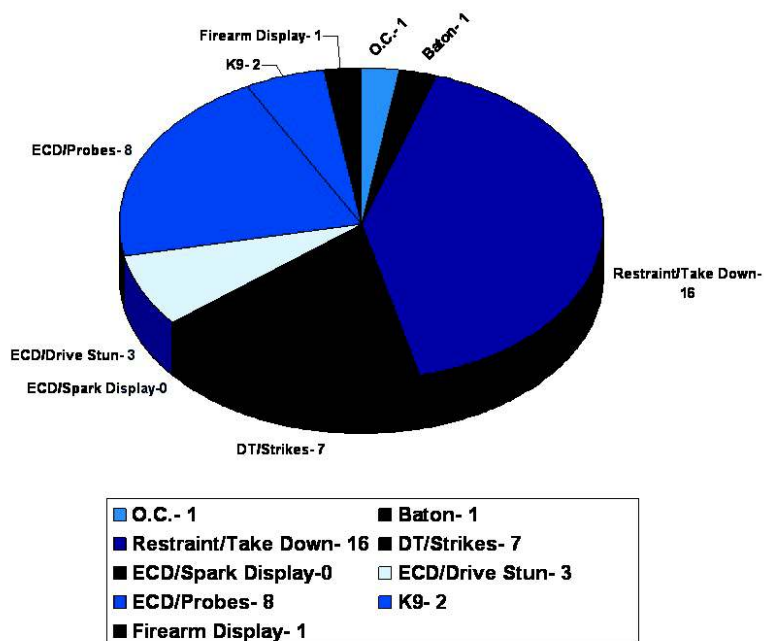
K9 2

Firearm Display 1

OC 1

Baton 1

2011 Use of Force



Community Services

Division



Captain Edward Martin is the Commander for the Community Services Division. The Commander oversees the Traffic Unit, Special Operations, School Resource Officer's, and the Court Prosecutor.

Court Prosecutor	Lieutenant Murphy
Community Outreach Supervisor	Lieutenant Tyre
Community Outreach Officer	Officer Mojica
Traffic Unit I	Officer Bellamo
Traffic Unit I	Officer Broman
Traffic Unit II	Officer Broman
Traffic Unit II	Officer O'Brien
Traffic Unit III	Officer Abel
School Resource Officer	Officer Ramos
School Resource Officer	Officer McConaghy
Animal Control Officer	Officer Texiera
Newcomer Advocate	Claire Contreras

keeping order in the court

Lieutenant Janice Murphy is the Chelsea Police Department's court prosecutor. The functions of a police prosecutor is a critical component in the prosecution of cases presented at the court following civil or criminal action applications submitted by the police. Lt. Murphy works to ensure the District Attorney's Office is provided with supporting materials necessary for successful prosecution of criminal cases. This role includes the review and coordination of Officers attendance at Court for testimony, providing accurate police reports, presentment of evidence, and communicating the requests of the Court to the Chelsea Police Department.

Court Prosecutor's 2011 Data

Criminal Motor Vehicle Hearings	830
Probable Cause Hearings	3840
Civil Motor Vehicle Hearings	388
Court Summons from the District Attorney's Office for officers	2300
Hearing, Summon, and Warrant Applications filed by officers	1359

Traffic Unit

Committed to

public

roadway

safety



The Traffic Unit participated in four statewide enforcement efforts:

- 1) Two "Over the Limit Under Arrest"
- 2) Click it or Ticket
- 3) Pedestrian, Moped, and Cyclist Safety





The Traffic Unit deployed two Mobile Speed Board units on various streets which are either high volume/accident locations or highly congested neighborhoods. The deployments were based on concerns from citizens, police traffic enforcement, and school districts.

The License Plate Reader was deployed almost every shift from Monday through Friday and was used to detect stolen car/plates, vehicles whose registration has been revoked, and vehicles who owed over \$500 of unpaid parking tickets to the city of Chelsea.

The traffic unit played a significant role in the record snow fall that occurred in 2011. The city was dumped with heavy amounts of snow during the months of January and February at the start of 2011. During the second week in January a powerful Nor'easter dumped 18 inches of snow. The traffic unit was out enforcing the parking restrictions in the snow emergencies so the plows could clear the roadways. The large snow banks combined with the narrow roadways effected traffic through the city for several weeks which kept the unit very busy.



Preserving the Safety on the public roadways

6,046

Motor Vehicle Violations



On November 26th 2011, Chelsea Police Officer Robert Longo assists the Everett and Malden Police with traffic during the 8th Annual Holiday Parade of Traditions held in Malden.

The Motorcycle Officers are trained and certified by the Commonwealth of Mass. Besides traffic Enforcement the unit performed numerous funeral escorts, parades, for dignitaries and Police Officers, assisted in Traffic for the annual May Day Celebration, Boys & Girls Club "Trick or Trot" road race, Reach road race, and the National Night Out. The unit assisted in the annual Taste of Chelsea, Back to School Celebration, major crime scenes, crowd control and supportive equipment used in city events such as portable lighting.



School Initiatives

Emergency Preparedness
Shelter In Place
Annual Drill

Reach Mentor Program
Ride for Reach

Police Activities League

Literacy Day

Student Government Day

Bullying
Prevention
&
Intervention

School Resource Officers

Officer Stephanie McConaghy was the School Resource Officer in Chelsea High School while Officer Jose Ramos maintained the responsibility as the School Resource Officer for the Browne and Clark Ave Middle Schools.





The "28th Annual National Night Out" (NNO), a crime/drug prevention event sponsored by the National Association of Town Watch (NATW) was held this year on Tuesday, August 2nd at the Williams School Playground from 5:30pm to 8:30pm. The event was a celebration of solidarity where the public and the police joined together to show participation in the partnership against crime. The Community Services Division has had a major role in the success of Chelsea's participation in the national program. the FBI, TSA and ICE. The graduates also experienced a 'ride-along' with an officer in a Chelsea Patrol Unit to experience the city from the officer's perspective.



Citizen Police Academy The CPD conducted its first Citizens' Police Academy in almost 10 years. Twenty eight (28) residents participated in a comprehensive nine week program where they were given presentations by different members of the department including Drug and Gang Investigations, Patrol Operations, Chief of Police, Detectives, Traffic, Accreditation as well as presentations by Immigration and Customs Enforcement (ICE), FBI and the TSA.

Officers held more than 50 Community Meetings in 2011.





Photo: Boston's Bomb Squad used remote-control robots to show how they would disarm a bomb. Credit: Courtney Sacco

MBHSR Metro Boston Homeland Security Region is made up of nine cities which includes the City of Chelsea. The Department of Homeland Security and FEMA consider this region to be one of the ten highest risk urban areas in the United States.

The DHS Office for Domestic Preparedness introduced to the region the Urban Security Area Initiative through eligible funding and grants. Boston Urban Shield is a training program for emergency responders in the metropolitan Boston region. The program is designed to save lives by enhancing the skills and collaboration of law enforcement, emergency medical services, fire, and local military through simulated terrorist attacks, disasters and the use of technology throughout the region.

The Boston Urban Shield operation took place on Saturday, May 21, 2011 at 800am and continued through Sunday, May 22, 2011 at 800am. This operation assessed the region's ability to successfully respond to and manage multiple terrorist events and other emergencies occurring simultaneously throughout the regional area.

At the New England Produce Center in Chelsea, bomb squads and K-9 teams responded to drills involving explosive devices found inside a motor vehicle. Chelsea Police Patrol Sgt. Nofle served on the Planning Board while planning with multiple agencies and officials. Officer McInain, K-9 Officer Ed Nofle, and several Chelsea Police Officers participated in this operation. This was a very large scale 24-hour operation that had been planned for many months and proved to be very successful.

Operation "Muffin Top"

On September 28, 2011, the Chelsea Police participated in Operation "Muffin Top", a table top exercise planned and run by JJ Burke, BU HEM faculty. The scenario was a chemical spill at a local factory. Participants included Chelsea Fire Dept, Chelsea EMS, Chelsea Public Health, Cataldo Ambulance Services and private companies. The after action report of the exercise is being written collaboratively by JJ Burke and Tori Jensen, a BU HEM student.



Photo: Lt. Tyre (seated in the back row) participates with officials during Operation Muffin Top.

Resident Officer's Program

Officers involved in this Program are responsible for holding monthly crime watch meetings, delivering official documents for the housing authority, patrolling the grounds of their development, taking complaints and following up on them. These officers handle any quality of life issues that may come up at the residential complex.

Officer Ramos

Detective Ramirez

Dispatcher Koolian

Sgt. Nee

Dispatcher Bright

Officer Otero

Officer Rossetti

Officer Walczak

Officer Gonzalez

Centro Latino

This organization worked together with Lt. Tyre, Officer Mojica and the department to raise awareness as it relates to the property disposal of hypodermic needles and syringes in the city. Outreach workers with the Centro Latino helped the police department by setting up a disposal kiosk in their lobby and by taking the time to educate known substance abuse users to help make public areas cleaner and safer.

Newcomer Advocacy

Claire Contreras joined the Department as the Newcomer Advocate after Carrie Nedzipovik left for a full time position with a national refugee resettlement agency. Claire Contreras picked up a new group of people to our Community, the Eritreans, refugees from a small country in Africa. A Training Bulletin was produced about the Eritreans as well as a Public Safety Workshop with a pamphlet in Tigrinya, "What to Expect from the Police" for the Eritrean community.

"Build Day" New Disney/KaBOOM! Park

Chelsea Community Garden

1st Annual Bike Run Against Child Abuse

May Day Celebration

1st Winterfest

**Boys & Girls Club
Trick or Trot road race**

Ride for Reach



Patrol Division



Captain David Batchelor commanded the Patrol Division. The Patrol Division Commander and the Shift Commanders worked together to strategically assign officers to Citywide Sectors (1-4) and other specific areas, neighborhoods where they were most needed based on crime trends.

Lt. Nancy Haumann, the Division Commander of the day watch shift led the introduction to the Chelsea Police Department's first computerized roll call system. In early 2011, Chief Brian A. Kyes, announced the plans that the Department would adopt an advanced roll call system. The system is now available to Shift Commanders to aid in the collection, management, and dissemination of public safety related

Patrol Division Shifts	Squads	Shift Commander
Day Watch	1 2 3	Lt. Nancy Haumann
First Half	1 2 3	Lt. Ed Noseworthy
Impact	A B	Lt. Ed Noseworthy Lt. Martin Conley
Last Half	1 2 3	Lt. Martin Conley

Lieutenant Ed Noseworthy was the First Half Division Commander. Lt. Noseworthy, and last half commander Lieutenant Martin Conley, continued to deploy patrols based on crime trends utilizing the program known as IMPACT POLICING (Improved Methods of Patrolling Area Crime Trends).

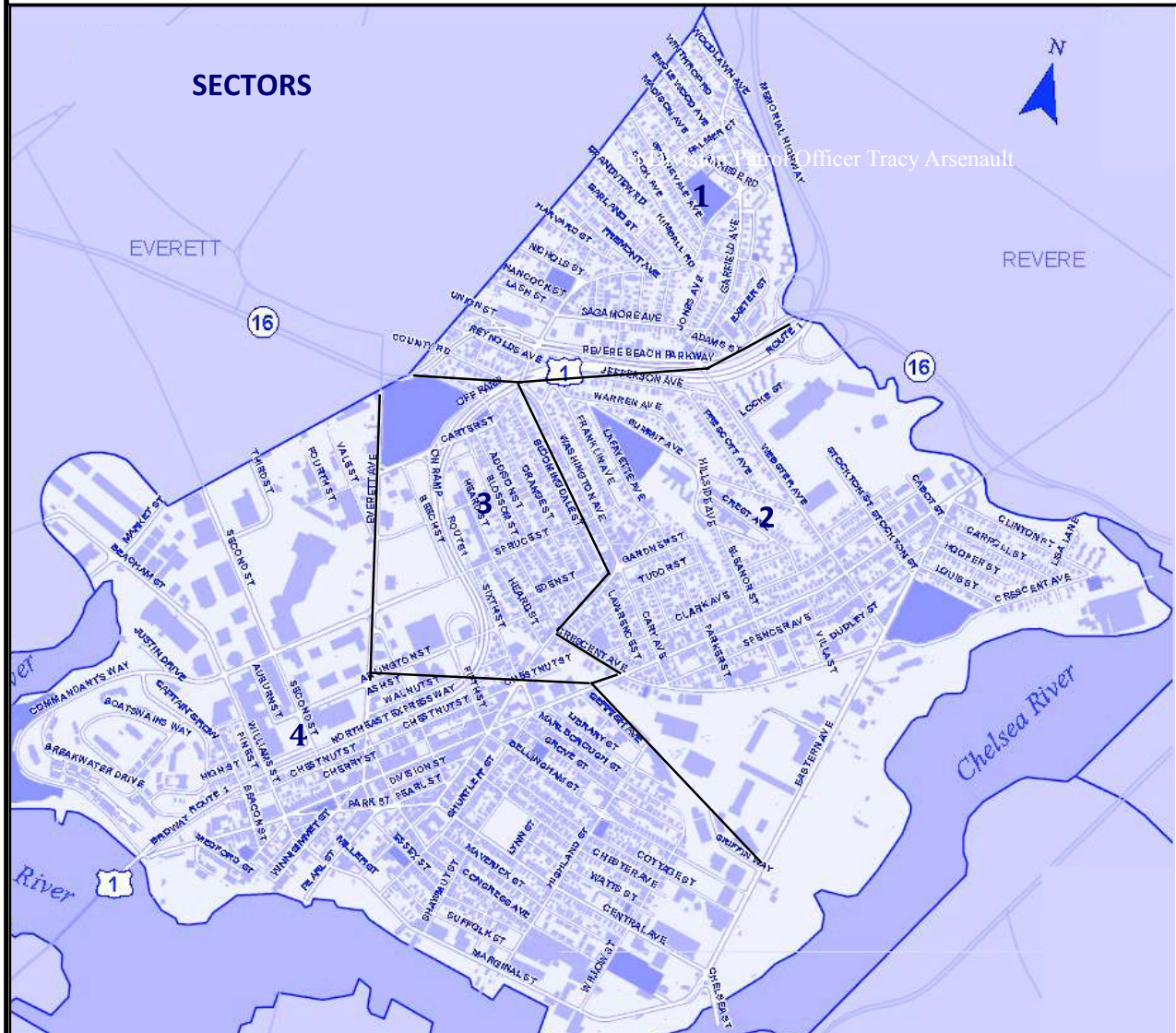
Many of the strategies included foot patrol, bikes, cruisers, anti-crime units, surveillance, and cameras. Lt. Noseworthy implemented and maintained a two man walking beat in the downtown area during the summer of 2011. The route officers focused on walking in the high crime neighborhoods to optimize visibility and make a stronger connection to the community. The mountain bicycle patrols were added to patrol depending upon weather and trends. A considerable amount of effort was made by utilizing the city's digital camera system to identify hot spots in neighborhoods and send officers as needed. Lt. Conley continued to assign officers at the bars and nightclubs around closing times to increase visibility and reduce the opportunity of violent confrontations.

The Patrol Division was assisted by several local law enforcement agencies such as the Park Rangers, MGH Police, and BHCC Police.

Sector Neighborhood Breakdown



- Sector 1 North of Revere Beach Parkway
- Sector 2 North of Gerrish Ave to Revere Beach Parkway
- Sector 3 Everett Ave to Bloomingdale St
- Sector 4 South of Gerrish Ave and Everett Ave





Chelsea Patrol Officers share many different roles and specialized skills in addition to patrolling the streets. Some officers are bilingual, hold community meetings, serve as mentors for the youth, conduct demonstrations, assist newcomers, and aid in investigations such as arson, vice, hostage negotiations, and insurance fraud.





CHELSEA POLICE K9 UNIT

Officer McLain

& Marco

Officer Capistran

& Ancho

Officer Nofle

& Alex

K9 DEPLOYMENT SUMMARY

Assisted FBI and Homeland Security with warrant search of possible terrorist suspects residence which led to an arrest.

Conducted a sweep of Quincy High School after Bomb Threat.

Assisted Woburn Police/State Police/ATF with field/area search for possible discarded firearm used in killing of a Woburn Police Officer.

B&E search resulting in suspect arrest by K-9.

Suspect taken into custody for Assault and Battery with a Dangerous weapon.

Assisted with search of rape suspect which resulted in locating and arresting the suspect.

Two car theft suspects surrendered to K-9 during a building search.

Suspected located and arrested during search for Assault and Battery suspect.

Assisted detectives with arrest warrant service with subject barricaded inside.

An area search for an armed home invasion suspect recovered the weapon used.

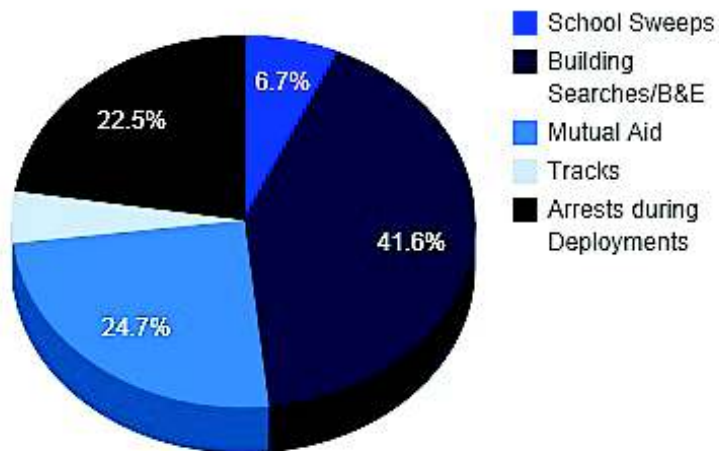
65 grams of crack seized in Everett.

Chelsea k9 tracked a suspect in connection to kidnapping from RI in Malden. Suspect later located in storage area on roof by MSP and FBI.

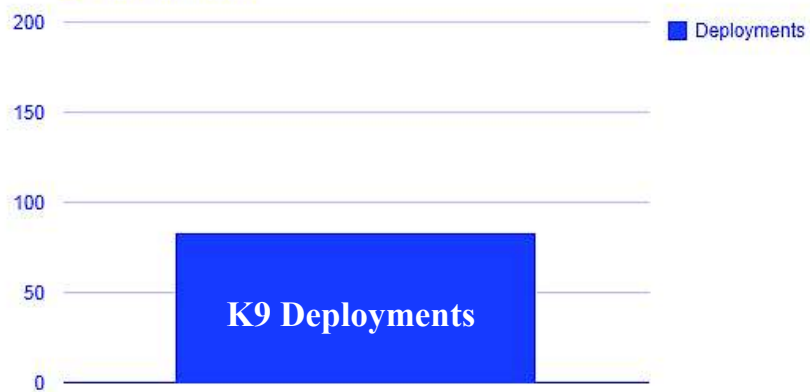


Photo: K9 Handler Officer McLain and Marco during a training exercise

K9 Data 2011



K9 Deployments 2011





Criminal Investigation Division



Captain Keith Houghton (left)
Lieutenant Thomas Dunn (right)
Sergeant Daniel Delaney
Sergeant David Betz *
Sergeant John Cowhig
Detective Anthony D'Alba
Detective John Coen
Detective Rosalba Medina
Detective Scott Conley
Detective Luis Rodriguez
Detective William Brizuela
Detective Michael Noone
Detective Emilio Ramirez *
Detective Michael Addonizio *
Gladys Agneta
Melissa Trzepacz

* CID Personnel Changes FY12

Patrolmen - Michael Addonizio
Emilio Ramirez, and Patrol
Division Sergeant David Betz
advanced into their new roles and
assignments as Detectives for the
Criminal Investigation Division.

A look at some cases from 2011:

Alleged Serial Rapist held on high bail after being captured after (4) years on a run and his capture led to the ID of four attacks.

Suspect caught and held from tripple stabbing that claimed one life.

SJC upheld a Murder conviction for 2nd time.

Fugitive wanted for attempted murder in Puerto Rico was apprehended by a multi-agency team including the US Marshal's Service, State Police Violent Fugitive Apprehension Section, and CPD.

Suspect arrested for July 2011 Homicide.

Man sentenced the maximum term for voluntary manslaughter from 2010 homicide on Grove St.

Chelsea Police and Suffolk County State Police Detectives tracked down suspect in Savanna Georgia with the assistance of US Marshalls.

Suspect convicted of second-degree murder and sentenced life in prison for a shooting death in August of 2010.

Suspect arrested for Fatal Chelsea Hit-and-Run.

Chelsea Man held for Broadway Stabbing.

Gang and Firearm Related Crimes

Shooting Investigations

CID has investigated five shootings; four of them non-fatal, This number was down by over 100% from the previous year. Detectives along Massachusetts State Police Detectives cleared by arrest the one homicide that a firearm was used. The department working with other Metro-Boston Police agencies worked together on regional gang feuds that fueled the increase in gun violence in (2010). With several successful prosecutions targeting repeat and or violent offenders, this category of violent crime was significantly reduced. This law enforcement cooperation was aided by timely information sharing. CID utilized the Boston Regional Intelligence Center (BRIC) to quickly link these and other suspects to other area crimes.

ICE

The department solidified its relationship with ICE by prioritizing violent offenders to be targeted in the city. During the reporting period, ICE removed 60 offenders who fit that profile. Ice made 60 arrests of fugitives and or criminals at large. In many of these arrests we were instrumental in assisting ICE by providing critical information to them. A process of information sharing with ICE has been instituted which will help I.D. the criminal element they seek out and hopefully limit the numbers involving collateral damage/arrests.

8

Firearms were Seized and Submitted to the State Lab for Testing

Massachusetts State Police

Coordinated support services with MSP Gang Unit and Violent Fugitive Apprehension Section, Chelsea Police Detectives and the state police arrested over 110 individuals on high risk warrants, of those 60 were arrested by Chelsea Police Detective Noone and the State Police Gang Unit.



FBI Gang Task Force

An investigator continued assignment of one investigator to the FBI gang task-force. This partnership allows the investigator to investigate and monitor gang incidents in Chelsea and provide that information to the taskforce. This taskforce investigates priority offenders that continually cross jurisdictional boundaries and targets those individuals for federal prosecution.

Bureau of Alcohol Tobacco and Firearms (ATF)

The Chelsea Police for the first time developed a formal partnership with the Bureau of Alcohol and Firearms (ATF). A Chelsea Investigator works with ATF agency in monitoring and investigating the illegal gun traffic that caused a spike in shootings in 2010.

New Firearm's Licensing Standards

Provide further information regarding mental health treatment from private facilities.

Existing or pre-existing conditions which may affect proper/safe handling of a firearm.

Provide more information regarding 209-A against and issued on behalf of the applicant, to also include harassment orders.

Proof of residency (Tax/fee delinquency now checked)

Certified copies of court dispositions.

Applicant must now advise how the firearm will be stored in the home.

Affidavit for co-habitants to sign regarding knowledge of the applicant having applied for a FID or LTC

Under Age Drinking Enforcement The Chelsea Police Department in 2010 / 2011 during compliance operations with Chelsea ASAP documented a slight drop in compliance from the previous years (94% from the previous 98%) Although a minor set back the overall rate is considered a continued success with licensed establishments. The evaluation during the grant timeline will utilize a 100% compliance rate as the benchmark during the operational period. The targeting of unlicensed private alcohol distribution in Chelsea neighborhoods will also be a continued effort during the grant period. All department operations will be closely monitored and the Chelsea Mobilizing for Change on Alcohol Coalition will act as a steering committee and advise on operational direction.

Category	2008	2009	2010	2011
Number of alcohol-related motor vehicle fatalities involving persons under 21	0	0	0	0
Number of alcohol-related motor vehicle crashes involving persons under 21	4	2	6	6
Number of OUI arrests involving persons under 21	0	1	2	1
Number of persons under 21 arrested for open container violations	9	2	15	8
Number of persons under 21 arrested for purchasing or attempting to purchase alcohol	1	1	1	0
Number of arrests made for possession of a fake ID	1	0	1	0
Number of arrests made for alcohol transportation by persons under 21	10	12	0	0
Number of persons under 21 put in alcohol-related protective custody cases	6	11	17	17
Number of citizen complaints received by your department in reference to large groups of teens and/or underage drinking	156	170	130	111

Property Crimes and Fraud Unit

The total number of “breaks” recorded was 425, down from 594 reported breaks in 2010.

Of the 425 reported breaks in 2011, 8 were categorized as Burglaries (B&E, Armed, Armed & Assault, Firearm-Armed, and Unarmed)

158 reports of B&E Nighttime for Felony

199 reports of B&E Day for Felony

46 reports of B&E Misdemeanor

5 reports of B&E Felony, person in fear

5 reports of entering a dwelling at night for felony

1 report of Breaking into depository

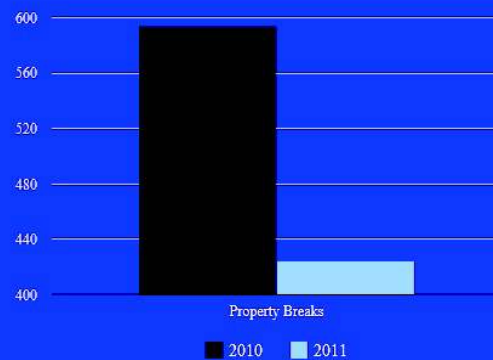
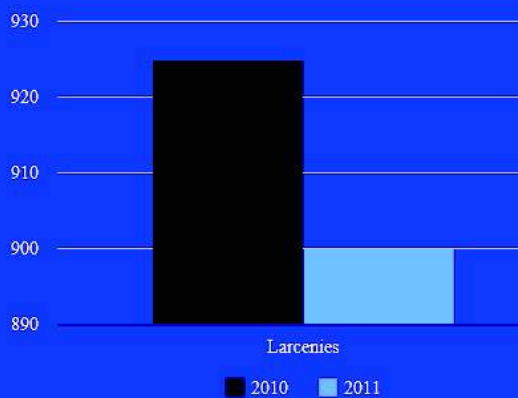
1 report of B&E Day armed

2 reported as Larceny over \$250.00



The total number of larcenies reported in 2011 was 900, down from 925 in 2010.

Most of the larcenies reported are related to breaking into a motor vehicle.



Narcotics and Vice Unit

DRUG ENFORCEMENT

The Chelsea Police Drug Unit was successful in targeting specific areas of concern to citizens and business owners. Detectives utilized both covert and overt operations to suppress “curbside dealing”. The unit applied for and received 14 search warrants that resulted in 7 arrests for trafficking in heroin or cocaine charges and \$13,652 seized. The unit participated in additional search warrants involving other neighboring jurisdictions, along with state and federal agencies. As a result of Drug Unit operations, 43 arrests were made during these search warrants and an assortment of drugs including cocaine, heroin, marijuana, and OxyContin were seized.



Drug Enforcement	
Search Warrants	14
Drug Trafficking Arrests	7
Total Search Warrant Arrests	43

VICE

Chelsea Police continued efforts to eradicate prostitution in Chelsea. Detectives and officers conducted two focused operations during the Summer to continue ongoing “Operation IMPACT” (Improved Methods of Patrol and Attacking Crime Trends). The department utilized undercover officers in targeting both Prostitutes and Johns. As a result a total of twenty-one arrests were made during the operations. This number does not include the many arrests the anti-crime officers made within Patrol Division.

2 Prostitution Operations

↓ ↓
21 Arrests

The Drug Unit took part in two national one day drug take back events with the United States Drug Enforcement Administration (DEA). On Saturday, April 30th and Saturday October 29th, 2011 the (DEA) coordinated a nationwide collaborative effort with state and local law enforcement agencies to remove potentially dangerous controlled substances from our nation's homes. This national initiative provided an opportunity for the public to surrender pharmaceutical controlled substances and other medications to law enforcement officers for destruction. Expired, unused, or unwanted controlled substances in homes are a potential source of supply for the increasing abuse of pharmaceutical drugs in the United States and an unacceptable risk to public health and safety.

Domestic Violence Unit

The Domestic Violence Unit participated in the National Family Violence Apprehension Program on October 18, 2011.



Detective Medina, the Chelsea Police Department's Domestic Violence Investigator participated in the Chelsea District Court program for Spanish speaking women developed to prevent repeated criminal behavior.

CASA DIVERT

The program which began is called Community Awareness to Stop Abuse: Domestic Violence Intervention and Emergency Response Team (CASA DIVERT). Through the use of risk assessment tools, CASA-DIVERT identifies victims at greatest risk of a serious re-assault or potential lethal attack.

The Chelsea, Revere and Winthrop Police Department's will successfully train 175 officers in the use of risk assessment tools that will aid each community in better serving victims of domestic violence and giving officers guidelines to recognize potential lethal cases.

At least twice a month, or on an emergency basis as the need arises, the Domestic Violence High-Risk Response Team meets to review referred cases and develops and implements individualized crisis intervention. Seven cases were referred to CASA DIVERT including a successful prosecution of one individual.

Domestic Incident Data 2007 - 2011

2007 2008 2009 2010 2011

Arrests	205	190	240	252	187
Incidents	256	246	273	301	286
Arrests/Incidents Total	461	436	513	553	473
Restraining Orders	355	374	368	365	364
Domestic Violence Homicides	1				



Police Action Counseling Team



Chelsea MGH Healthcare Facility

PACT A team of licensed MGH clinicians, Georgia Green, Beth Muccini, and Bonnie Fishman work in collaboration with many officials of the Chelsea Police Department. PACT (The Police Action Counseling Team) provides crisis intervention to children who witness or have been victims of violence, in order to reduce trauma and to ultimately interrupt the cycle of family violence. The goals of PACT a partnership between MGH Chelsea and the Chelsea Police Department, are to facilitate the healing process and to strengthen the resiliency of children.

Keeping children and families safe

PACT Clinicians are available 24 hours a day and respond immediately when contacted by police following an incident when children have been exposed to violence. The department collaborated with PACT on over 100 incidents during 2011. This also included weekly meetings held at police headquarters where officials of the Police Department and PACT review the progress of each case. PACT continued to enhance the police departments efforts to provide a safe, stable, and secure environment for children and families in the community. Some of their efforts focused on training, violence awareness, and the newcomer population by working closely with the Newcomer Advocate. PACT provides valuable support to the children and families in the community.

- Immediate Response and emotional support to children and their care-givers.
- The opportunity for children to talk and express their feelings
- Safety Planning
- Referrals for Counseling and other support services
- Help to parents in assessing ongoing healthcare needs
- Families provided with Clinician counseling by telephone or in person
- Links to court advocates and community agencies around issues of domestic violence



Chelsea Police Officer Carlos Vega

CRIME SCENE Sexual Assault Investigations



Detective D'Alba is the primary detective assigned to investigate sexual related assaults. Detective D'Alba works cooperatively with the patrol officers, detectives, victims, witnesses, and many agencies during what are very thorough and lengthy investigations. Detective D'Alba responds to crime scenes to examine for evidence to investigate and link suspects to their crimes committed.

Investigated Sexual Assaults - 2011

Rape	21
Rape of a Child with force	11
Assault to Rape	8
Assault to Rape - Firearm	1
Sodomy	1
Indecent A&B on child	14
Indecent A&B on retarded person	1
Indecent A&B on 14 or over	19
A&B on child with Substantial bodily Injury	1
A&B on child with injury	3
A&B on 60+/Disabled with injury	8
Statutory Rape	9
Distribute Obscene Matter	1
Peeping Tom	1
Total	99



Insurance Fraud Bureau Award

On May 26, 2011, the Insurance Fraud Bureau observed its 20th anniversary with an awards ceremony held in Boston, MA. During the ceremony forty-three individuals from the insurance industry, law enforcement agencies, and prosecutors were recognized "for outstanding and invaluable contributions" toward the fight against insurance fraud in Massachusetts. Award recipients represented individuals who have made significant contributions to the IFB's mission to investigate, prevent, and deter insurance fraud. Amongst the award recipients was Chelsea Police Officer Roger Digaetano. Officer Roger Digaetano has served the City of Chelsea since 1987 and is currently the investigator for Chelsea Police and IFB task force.



Insurance Fraud Investigations

In 2011, Chelsea Police established a local task-force with the Insurance Fraud Bureau of Massachusetts (IFB). The IFB is a multifaceted investigative agency dedicated to protecting the public by the systematic elimination of fraudulent insurance transactions. A Chelsea patrol officer is assigned to the taskforce and has been involved in several successful investigations. The task-force also spearheaded an add campaign that placed billboards on highly travelled streets advising residents how to report fraud. The officer was also recognized by and received an award for his actions by the IFB at a ceremony at the US Federal Court House in June of 2011.

A total of 55 Motor vehicle accidents and 39 hit and run claims were investigated by the task-force. Several cases led to plea agreements top pay back the insurance company and another 9 cases currently set for further court inquiry.

IFB Training

Training was held In June of 2011 through two fifteen minute roll-call sessions which were conducted by the Insurance Fraud Bureau with Officer Digaetano. Chelsea continues to be on the high end of fraudulent claims. Since the IFB (Insurance Fraud Bureau) has targeted Chelsea in 2005, the average driver premium has dropped 22.5%. The CPD and the IFB alerted residents to report this type of fraud through a media campaign consisting of two bill boards and a press release.

**Calls for
Service
- 9 %**

City Wide Calls for Service

CW- CFS	2010	2011	% Chg	Net Chg
Out of City	939	884	-5.86%	-55
Sector 1	3,216	3,093	-3.82%	-123
Sector 2	5,510	5,594	1.52%	84
Sector 3	5,782	6,096	5.43%	314
Sector 4	29,447	25,252	-14.25%	-4,195
Total	44,894	40,919	-8.85%	-3,975

City Wide Crimes

City Wide	2010	2011	% Chg	Net Chg
Homicide	11	2	-81.82%	-9
Sexual Assault	84	79	-5.95%	-5
Robbery	199	246	23.62%	47
Agg. Assault	475	420	-11.58%	-55
Burglary	473	427	-9.73%	-46
Larceny	925	900	-2.70%	-25
MV Theft	196	206	5.10%	10
Total	2,363	2,280	-3.51%	-83
Violent Crimes	769	747	-2.86%	-22
Property Crimes	1,594	1,533	-3.83%	-61

**Homicides
-82 %**

City Wide Offenses & Arrests

City Wide	2010	2011	% Chg	Net Chg
Total Offenses	9,641	8,228	-14.66%	-1,413
Total Arrests	2,484	2,093	-15.74%	-391
PCs	510	408	-20.00%	-102
Total Summons	650	504	-22.46%	-146

**Arrests
- 15 %**

Burglaries
- 29 %

Robberies
- 58 %

Burglaries
- 3 %

Sector 1

Sector 1	2010	2011	% Chg	Net Chg
Homicide	0	0	0.00%	0
Sexual Assault	6	7	16.67%	1
Robbery	12	5	-58.33%	-7
Agg. Assault	27	28	3.70%	1
Burglary	65	46	-29.23%	-19
Larceny	121	116	-4.13%	-5
MV Theft	22	27	22.73%	5
Total	253	229	-9.49%	-24
Violent Crimes	45	40	-11.11%	-5
Property Crimes	208	189	-9.13%	-19

Sector 2

Sector 2	2010	2011	% Chg	Net Chg
Homicide	2	0	-100.00%	-2
Sexual Assault	8	18	125.00%	10
Robbery	18	29	61.11%	11
Agg. Assault	71	68	-4.23%	-3
Burglary	106	103	-2.83%	-3
Larceny	166	178	7.23%	12
MV Theft	50	49	-2.00%	-1
Total	421	445	5.70%	24
Violent Crimes	99	115	16.16%	16
Property Crimes	322	330	2.48%	8

**Violent
Crimes**
- 22 %

Sector 3

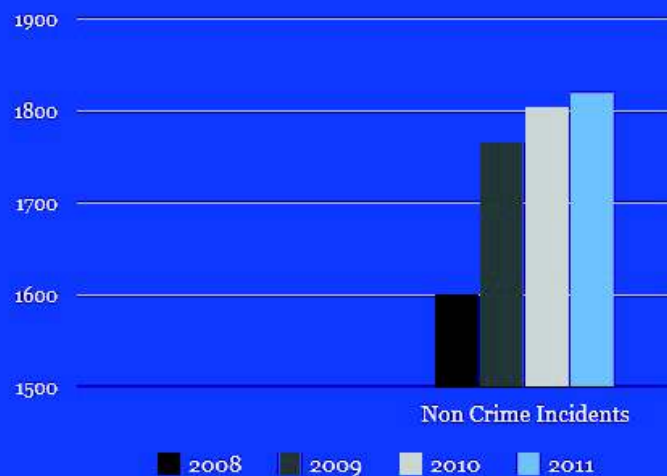
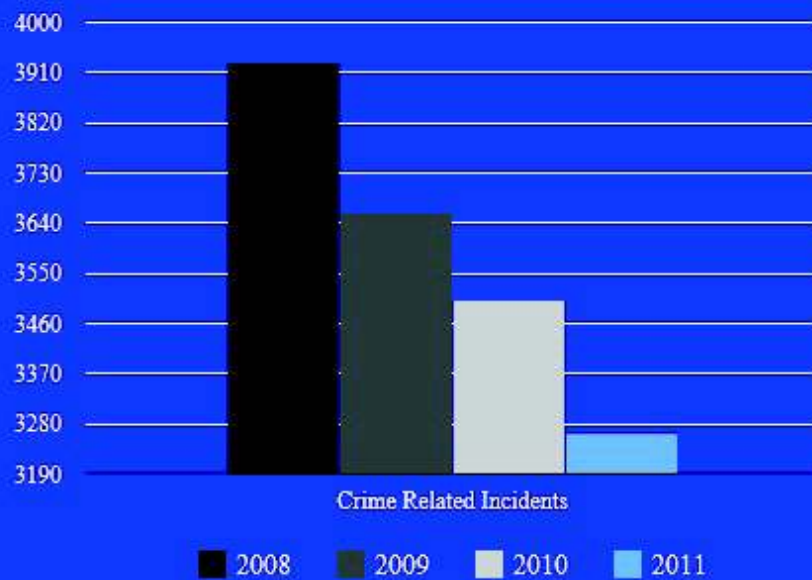
Sector 3	2010	2011	% Chg	Net Chg
Homicide	1	1	0.00%	0
Sexual Assault	14	10	-28.57%	-4
Robbery	44	42	-4.55%	-2
Agg. Assault	94	67	-28.72%	-27
Burglary	79	92	16.46%	13
Larceny	178	232	30.34%	54
MV Theft	28	43	53.57%	15
Total	438	487	11.19%	49
Violent Crimes	153	120	-21.57%	-33
Property Crimes	285	367	28.77%	82

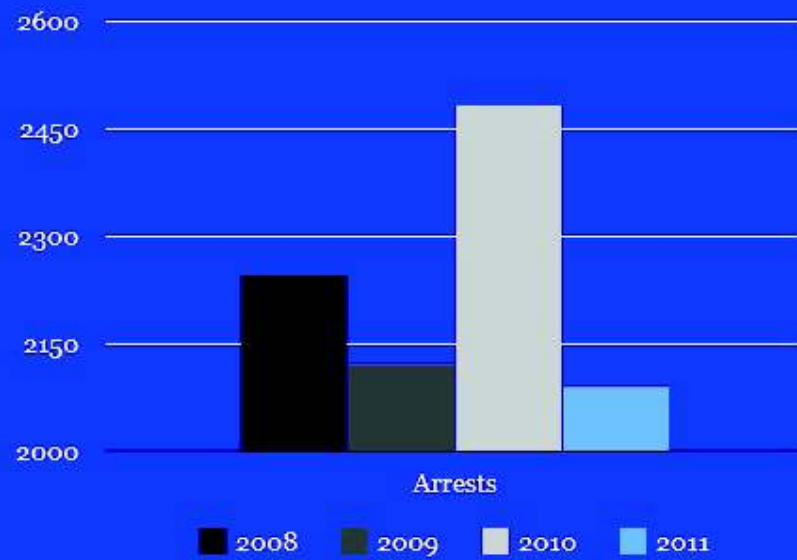
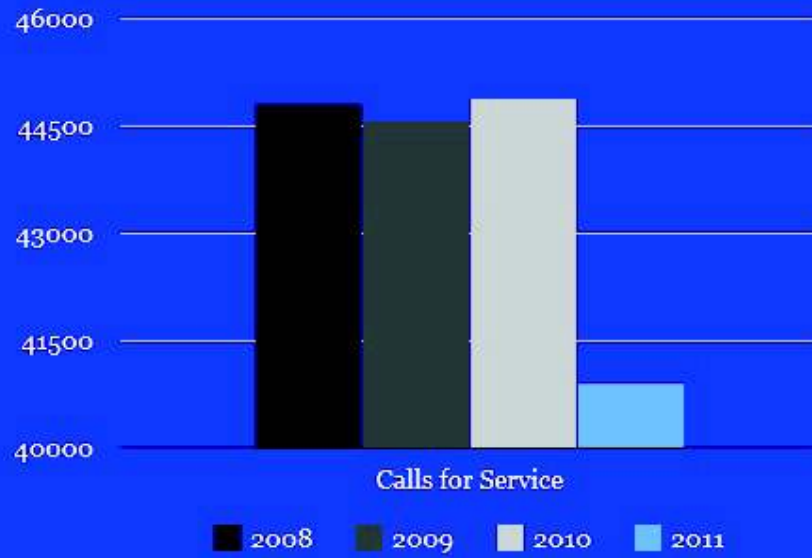
Sector 4

Sector 4	2010	2011	% Chg	Net Chg
Homicide	8	1	-87.50%	-7
Sexual Assault	53	42	-20.75%	-11
Robbery	120	169	40.83%	49
Agg. Assault	275	245	-10.91%	-30
Burglary	222	185	-16.67%	-37
Larceny	454	370	-18.50%	-84
MV Theft	94	87	-7.45%	-7
Total	1,226	1,099	-10.36%	-127
Violent Crimes	456	457	0.22%	1
Property Crimes	770	642	-16.62%	-128

**Property
Crimes**
- 17 %

	2008	2009	2010	2011	Net Change	% Change
Calls for Service:	44,812	44,566	44,894	40919	-3975	-9%
Arrests:	2,247	2,124	2,484	2093	-391	-16%
Protective Custody (PC):	435	460	510	408	-102	-20%
Crime Related Incidents:	3,930	3,660	3,502	3263	-239	-7%
Non-Crime Incidents	1,602	1,766	1,806	1821	15	1%
Motor Vehicle Accidents:	889	884	839	862	23	3%
Traffic Citations:	8,834	7,691	8563	7596	-967	-11%





A look back: The year of 2012 is the 5th year for Chief Brian A. Kyes as the Chief of Police in the City of Chelsea. Chief Kyes continues to be committed to empowering the Police Department and the Community to help make it a safer place to live.

Community Survey	Professional Development Program	Crime Analysis Unit
Community Policing Substation	Hiring New Officers	CID Intelligence Center
Text-A-Tip	Anti Crime Unit	Operation IMPACT
Community Action Meetings	Specialized Anti-Crime Units	Community Substation
Newcomer Advocacy	Impact Patrols	Crime Stoppers
Community Action Network	Bicycle Unit	Expanded Gang Unit
SSYI	(3) K-9 Units	Expanded Drug Unit
Citizen Smartphone App	Digital Headquarters Application	Drug Task Force
EPIC	Digitalized Roll Call System	IFB Task Force
Youtube Channel	Department In-Service Training	Casa Divert
Accreditation	Zero Tolerance	Additional Cameras
Diversity		
National Night Out		

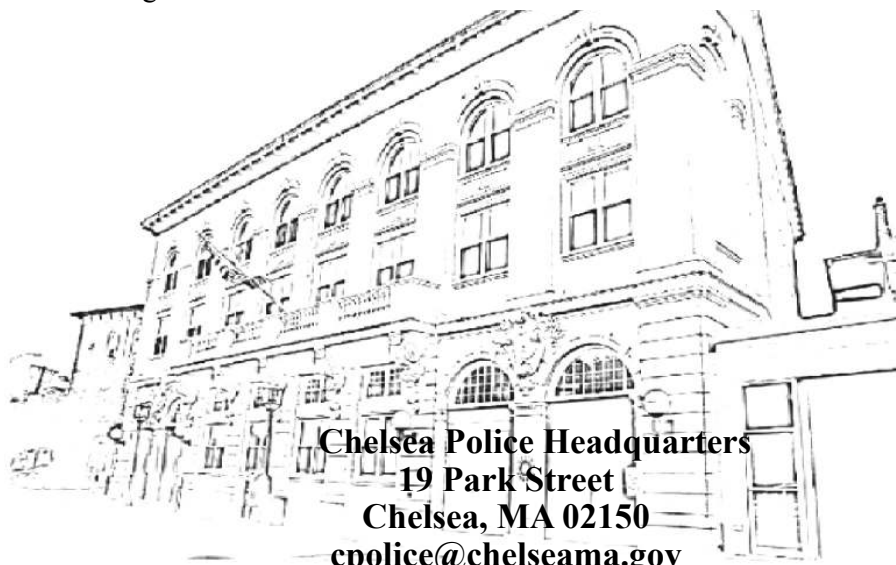


Brian A. Kyes



Acknowledgement

The content in the 2011 Annual Report was a collaborative and combined effort from all the hard work accomplished by each and every member of the Chelsea Police Department and partnering organizations.



Chelsea Police Headquarters
19 Park Street
Chelsea, MA 02150
cpolice@chelseama.gov
(617) 466-4800



Crime Stoppers Tip Line (617) 466-4880