



**Chelsea Police Department**

# 2020

**ANNUAL REPORT**

A photograph of a bridge at night. The bridge's steel truss structure is illuminated by warm lights, and its reflection is visible in the dark water below. A large concrete pylon stands on the right side of the frame. In the background, a small building with bright lights is visible on the left. The overall scene is a nighttime view of a bridge.

**COMMITMENT. PRIDE. DEDICATION.**



## TABLE OF CONTENTS

Message from the Chief.....	2
City Manager's Message.....	3
History of the Department.....	4
Office of the Chief.....	5
2010 Organizational Chart.....	8
Patrol Division.....	10
Community Service Division.....	11
Criminal Investigation Division.....	13
Professional Standards and Administrative Division.....	17
2010 Statistical Crime Data.....	18



## A MESSAGE FROM THE CHIEF

On behalf of the fine, hardworking men and women of the Chelsea Police Department I am extremely enthusiastic once again as I begin my fourth year as the City's Police Chief to Present the 2010 CPD Annual Report.

In the following pages you will see that the Chelsea Police Department continues to lead the way through the current adversity and continuing challenges confronting us all across the state and the nation by maximizing our available resources and finding innovative and creative ways to support our mission in providing for the safety and security of all the members of our community. Our sworn officers and civilian support staff continue to be completely committed and dedicated to our respective areas of responsibility and to the community that we so faithfully serve.

This past year we became one of only 30 police departments out of 370 agencies across the Commonwealth to date to achieve the prestigious and professional status of excellence in law enforcement by receiving the award of Statewide Accreditation. Although participation in this State Accreditation process was strictly voluntary, the successful attainment of the status by the CPD ensures and ultimately reinforces that the delivery of all police services in the City of Chelsea are at the highest level of professionalism and integrity possible.

As we move into 2011 and beyond we continue to look at new initiatives and projects stemming from feedback received during the evaluation and assessment of our policing tactics, strategies, policies and programs revealed during the accreditation process over the past several years. We pledge to further incorporate technology, accountability and ingenuity in combating crime and addressing those quality of life issues that lead to further crime. We will continue to work under a community policing model utilizing the concept of "smart policing" and community engagement working as efficient and effective as possible despite any ongoing fiscal pressures that may exist relating to the State's economy resulting in some difficult legislative choices.

In closing, you have our unyielding commitment to continue our tireless efforts to ensure that the City of Chelsea remains one of the most vibrant and up and coming cities in the Commonwealth. With your ongoing support, collaboration and assistance I am extremely confident and exceptionally optimistic that we will be successful despite any pressures and challenges that we may face.

Sincerely,

A handwritten signature in black ink, appearing to read "Brian Kyes". The signature is fluid and cursive.

Brian A. Kyes, Chief of Police  
Chelsea Police Department





## FROM THE CITY MANAGER

I am pleased to share with you my thoughts on the outstanding work and exceedingly high level of accomplishment that highlights the tremendous reputation the Chelsea Police Department continues to earn.

Through the Department's dedication and achievement, our local men and women in blue have been able to both protect the public and achieve the city's goals for its overall rejuvenation. Fortunate we are to have such a force to call upon.

Crime rates do not tell the entire story of CPD. Sure, the statistical analysis of crime reflects positively on a Department whose mixture of instinct and hard work has ferreted out crime and made our community safer place to live, work and visit. Yet, the statistics tell only part of the story, as CPD and its officers are leaders in more than just traditional policing programs.

Of the many impressive tributes I could offer about our officers, the most satisfying is the continued praise I receive for the action our Police Department takes. That praise is reflective of proficient enforcement activity, but also recognizes the prevention and intervention efforts officers of CPD regularly advance and the general department of those in the department. While success as a department, the non-enforcement activities may be a key to supporting such success.

Consistent with that last note, among the processes that CPD has embraced and has been recognized for is its support for partnerships and collaborations. While law enforcement was once a jurisdictional quagmire, CPD has worked well to break down historical barriers and helped elevate the cause of public safety throughout the region and the country. CPD has focused on strengthening relationships on the federal, state and local levels in areas like anti-gang and homeland security efforts. Equally as important, CPD works with prevention and intervention specialists, both in the public and non-profit worlds, to better understand the issues facing our city and our residents, to offer support for the mission of those organizations, and to provide greater coordination and cooperation to maximize and promote the greater success of those partnerships and collaborations.

Under the direction of a terrific police chief, Chief Brian Kyes, an accomplished command staff and a dedicated patrol, CPD is a well functioning City department that is meeting and exceeding its local mandate. It is an honor to share the responsibility of promoting public safety with those whose sacrifice and dedication continues to produce tremendous results. The beneficiaries of that work continue to expect and appreciate such distinguished performance from such a gallant force.

*Jay Ash*  
Jay Ash  
City Manager

# A BRIEF HISTORY OF THE CHELSEA POLICE DEPARTMENT

The Chelsea Police Department remains one of the oldest police departments in the United States. In 1834, the position of Constable was established in the Town of Chelsea and given statewide powers when serving warrants in both civil and criminal cases. There was no regular salary attached to this office but if called upon to "keep peace at assemblies", the constable was paid a fee of one dollar for each activation. John Low and Benjamin Shurtleff were both elected the first Constables for Chelsea.

In 1847, a Night Watch was instituted by the town fathers at a cost of forty dollars for the year. As a result, the Town authorized the Selectman to employ a Night Watch whenever "they deemed it necessary." A Police Court was subsequently established in 1855 and was located at 220 Broadway with Hamlet Bates serving as the First Justice of the Court.

In 1857 the first Chelsea "City" form of government passed a city ordinance establishing a Police Department comprised of a City Marshal and six assistants. Erastus Rugg was appointed the first Marshall at a salary of \$800 a year with a total operating budget of \$4,450. The first entry in the Chelsea Police Journal, made on July 13, 1857, read "Write anything you think will be interesting to the Police Department each day with your name.-E. Rugg."

On July 7, 1871, the first death of a police officer, killed in the line of duty, was recorded in the police journal which read: "For no explainable reason a man approached David Weber, on duty at the time, and shot him in the region of the heart from which he died." In 1881 the title of City Marshal was changed to Chief of Police, with two deputies and fifteen patrolmen.

As the population of the city continued to grow through the years of the late 1800s to the early part of the 20th century and to the recent waves of newcomer immigrants to the City of Chelsea so too did the size of Police Department. Today the Police Department is considered a "Massachusetts Major City Police Department" and is comprised of 96 Permanent Police Officers with Brian A. Kyes serving as the department's 20th permanent Police Chief.

## OFFICE OF THE CHIEF OF POLICE

BRIAN A. KYES

The Chelsea Police Department is structured into a series of organizational components that represent functional groupings of employees performing like activities. The organizational structure of the Department provides the Chief of Police with a means for assigning responsibility of performance of a group of functions to a single supervisor, as well as letting employees know to whom they are accountable. The executive head of the Department is the Chief of Police who supervises and oversees all the organizational components and functions through his command staff. The Chief of Police is appointed under the provisions of Massachusetts General Law Chapter 41 Section 97A and Article 1 section 7-5 of the Chelsea City Ordinance. The Chief of Police responsibilities include; oversight of the daily operations of the Department, preparation of Department budget and submission to city officials, responsible for all Departmental expenditures, disbursements and collected funds in accordance with federal, state and local laws. In 2009, The Chief of Police was responsible for ninety-six (96) sworn police officers, eleven (11) Civilian employees and a budget of \$8,398,832.

### INTERNAL AFFAIRS

LIEUTENANT WILLIAM DANA

Historically, police departments have been an instrument to maintain law and order. To be fully effective, the police need to have and maintain public trust and confidence and have their cooperation. Trust and confidence can exist only if; the public recognizes that their police department uses its enforcement procedures with integrity and according to law. Employees of the Chelsea Police Department are held to the highest standards of professional conduct. Employees who do not adhere to the standards of conduct, either through deliberate action or negligence are subject to disciplinary action such as corrective training, counseling, or punitive action that shall be applied in a prompt and specific manner. The Internal Affairs Investigator is responsible for recording, registering and supervising the investigation of complaints against all employees.

The Internal Affairs Investigator ensures that the integrity of the Department is maintained by conducting intensive and impartial investigations and reviews in an objective, fair and judicious manner. The objectives of the internal affairs investigation are: protection of the public, protection of the employee, correction of procedural problems and the removal of unfit personnel.

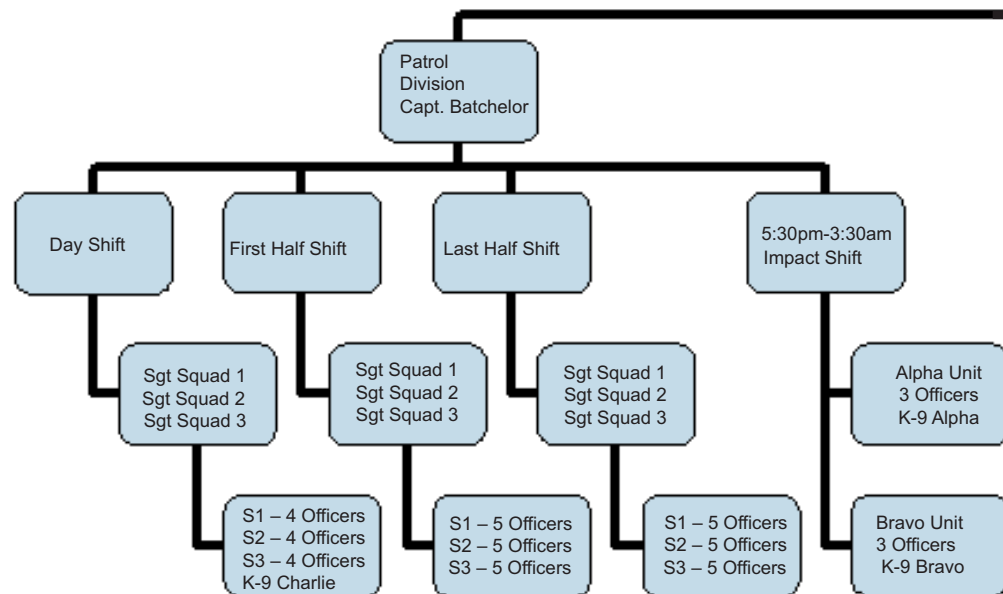
In 2010, nine (9) formal investigations, twenty-five (25) informal investigations were conducted. Administrative charges were sustained against Chelsea Police Officers five (5) times or 15% of the total complaints received. The unit also reviewed the ninety (90) incidents where Chelsea Police Officers submitted use of force reports.

**The Business Manager** reports directly to the Chief of Police and is responsible for oversight on all matters relating to the Department's budget. The position is responsible for providing resources, guidance and fiscal control to all Division Commanders in addressing the day to day operations of the Chelsea Police Department. Other responsibilities include ensuring compliance on state and federal grants that the Department receives.

**The Executive Secretary** is responsible for all personnel record keeping including officer contact information, weekly attendance, and training, awards, educational, promotional and retirement documents. This position coordinates incoming correspondence directed to the Chief of Police, Division Commanders or support personnel. The position is also responsible for all web-based information posted on the department's website.

# *An Organizational View of the Department's Ranking Structure*

*Effective February 1, 2010*



## ***PROFESSIONAL STAFFING:***

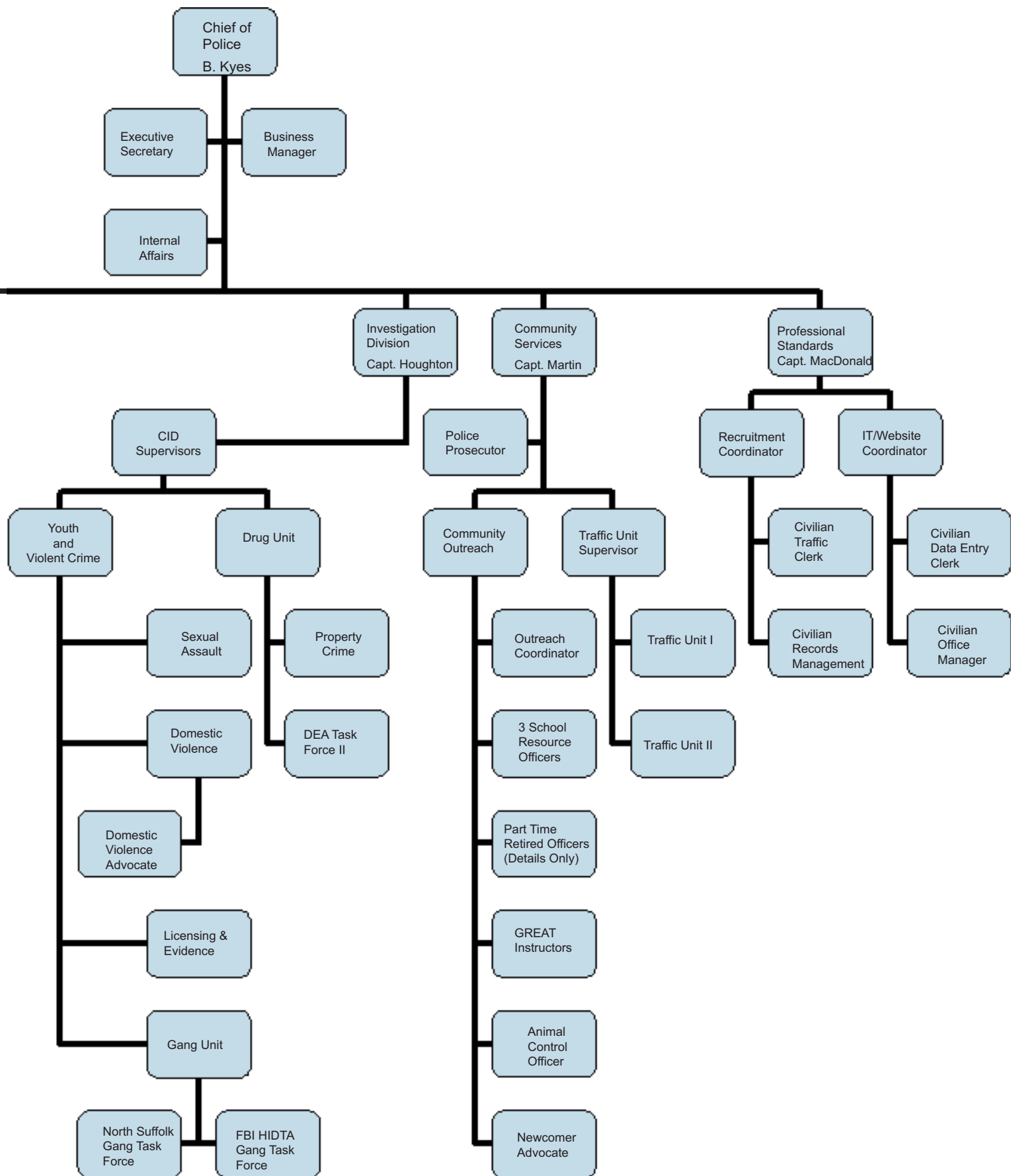
**Full Time Officers: 96**

**Civilian Personnel: 9**

**Animal Control Officer: 1**

**2010 Budget: \$ 8,398,832**





# COMMITMENT.



# PRIDE.







DEDICATION.





## PATROL DIVISION

### CAPTAIN DAVID BATCHELOR

The Chelsea Police Patrol Division consists of one Captain, three Lieutenants, nine Sergeants, and approximately forty seven Patrol Officers.

Patrol shifts are non-rotating and consist of three eight-hour shifts, and one 10 ½ hour impact shift. The eight hour shifts consist of the Day Shift, the First Half Shift and the Last Half Shift. Each shift is comprised of one Lieutenant, three Sergeants and three squads of patrol officers. A Lieutenant commands each shift and each squad is lead by a Sergeant. The Fourth shift is known as the Impact Shift, which covers the period of 5:30 p.m. to 3:30 a.m., when service calls are at the highest.



The Patrol Division is the largest division in the Department. It operates year-round, seven days a week, twenty-four hours a day. The function of the Patrol Division is to provide uniformed patrol coverage to all areas of the City. Officers conduct patrols on foot, bicycle, and in motor vehicles. They respond to emergencies such as crimes in progress, motor vehicle accidents, injuries, illness, and fires. They routinely investigate citizen complaints; arrest offenders; appear in court; provide traffic control and enforcement; and attend community based meetings.

The primary goal of the Patrol Division is the prevention of crime and disorder by adhering to the Community Policing Philosophy; as adopted by the Department over fifteen years ago. Under this philosophy, officers are assigned to designated areas of the City, called *Sectors*. Each officer has the responsibility of addressing concerns in their area .

The Patrol Division also provides service by responding to emergency 911 calls on a daily basis. Annually the Chelsea Police Department receives approximately 35,000 calls for service. Of the 35,000 calls received, approximately 5,500 are documented as incidents requiring reports. We also investigate approximately 700 motor vehicle accidents per year and arrest approximately 2,000 individuals annually.

### The Canine (K9) Unit

With the help of local businesses in 2008, the Department was able to relaunch the K9 unit. In 2009 two additional K9's were added to the Unit. These K9s and equipment were funded through the Boston UASI regional group (*Urban Area Security Initiative*). All K9's are now fully trained in tracking, drug and bomb detection and are on Patrol 24 hours a day. In 2010, the canine (K9) unit was transitioned into the Patrol Division.



## COMMUNITY SERVICE DIVISION

CAPTAIN EDWARD MARTIN

*The Community Service Unit is responsible for a number of police and community functions.  
It is comprised of the Traffic Unit, the School Resource Officer and Community Outreach Programs.*

The **School Resource Officer** initiative places Chelsea Police Officers in schools throughout the city. This is a joint initiative between the Police Department and the Chelsea Public School system to increase safety and foster a spirit of openness between youth and Police. In 2010, Officers were assigned to *Chelsea High School, Clark Middle School, and Wright and Brown Middle Schools*. These Officers have been trained and certified in this specialized area.

After many years the Department has reinstituted the **G.R.E.A.T. Program** (*Gang Resistance Education and Training*) in the elementary and middle schools. It is taught by six nationally certified Officers. The program's goal is to teach youth the dangers of gangs.

### **Resident Officer Program**

The Department has partnered with city housing complexes to house Chelsea Police Officers at several locations throughout the city. This nationally recognized program provides officers and their families to live at each site paying a reduced rate. These officers are required to provide added security and to organize residents in community and neighborhood crime watches. Currently, officers reside at several units of the Chelsea Housing Authority, 855 Broadway and 300 Admirals Hill.

### **Animal Control**

The Animal Control Officer manages all cases of domestic and wild animal issues throughout the City. Recently, reports of wildlife inhabiting and nesting in city areas has become more common, and is a danger as well as a concern to residents. This phenomenon is due to the loss of a wild animal's natural habitat as urban areas expand. The ACO is charged with educating the public and mitigating these specific complaints.

**The Community Resource Officer** is a liaison between police and neighborhoods, partnering with community service groups in Chelsea. The Officer in this role is responsible for the establishment of crime watches throughout the City including the coordination of the *National Night Out* program in August.

### **2010 Court Prosecutor's Office Reportings**

**Criminal Motor Vehicle  
Summons : 641**

**Warrants issued by  
Chelsea District  
Court: 612**

**Arrests: 2,484**

**Civil Traffic Citation  
Hearings: 6,422**

## Newcomer Advocate Program

The Newcomer Program was established to build greater understanding and trust between Chelsea's newest residents, the Chelsea Police Department (CPD) and the community at large. The CPD's Newcomer Advocate has developed and implemented a program to strengthen police department and community knowledge of the refugee and immigrant populations arriving and living in the City of Chelsea, as well as provided outreach to newcomers to ensure a smooth and safe transition to their new community. During 2010, the advocate focused on greater newcomer and community member engagement. This was achieved in a number of ways. The Advocate collaborated with local community organizations to organize and participate in community events for newcomer families, including a World Refugee Celebration and a Block Party. Through the continuation of "public safety" workshops, police station tours and outreach to ESOL classes and resettlement agencies, Advocate continued to introduce newcomers to police officers to provide important safety information and to help ease fears in working with police and reporting crime. Additionally, the advocate worked directly with newcomer families, providing referrals to resources and assisting with safety issues, such as settling disputes between refugee tenants and their landlords and assisting the families of two Iraqi Chelsea High School students who were victims of violent attacks at school.

The **Traffic Enforcement Unit** is responsible for the control and education of the motoring public as it pertains to the laws of the Commonwealth and the Ordinances of the City. The unit consists of five Officers. In 2010 the Department wrote 11,315 motor vehicle citations throughout the City for various violations. The Traffic Unit was responsible for 80% of those citations.

The unit also participated successfully in the nationwide program, *Over the Limit under Arrest*, targeting impaired drivers, *Click it or Ticket*, the national seat belt enforcement initiative, and *Road Rage*, a program aimed at getting aggressive drivers off the road. The Unit has also worked closely with The Massachusetts State Police Truck Team, Governor's Auto Theft Task Force, and the Registry of Motor Vehicle's Compliance Unit.

The Traffic Unit plays a significant part in planning all major city events, including *Chelsea Day*, *River Revel*, *4th of July Celebration*, *National Night Out*, and the *May Day Immigration event*.

The **Court Prosecutor** interacts daily with the District Attorney and various court departments such as Probation, the Clerk of Court and Victim Witness Advocacy. The Court Prosecutor reviews all reports submitted by the Department's Officers for arrests, warrants, and complaints and schedules all court appearances.



## **CRIMINAL INVESTIGATION DIVISION**

### **CAPTAIN KEITH E. HOUGHTON**

The Department's Criminal Investigation Division (CID) investigates criminal activity that occurs in the City of Chelsea or has an effect on the City of Chelsea and its citizens. In 2010, the Criminal Investigation Division investigated over 500 cases, arrested 282 individuals and monitored crime trends in the City and the Greater Boston area. The Criminal Investigation Division works closely with investigators from the State Police, federal agencies and surrounding cities and towns in sharing resources, personnel and information. CID personnel are also affiliated with several task forces that have been established to address specific types of crimes, such as narcotics distribution, gang violence, prostitution, burglaries, bank robberies, car theft, computer or cyber crime, financial crimes as well as warrant apprehension.

### **2010 INITIATIVES AND RESULTS**

#### **Operation IMPACT**

The department remained committed to what is has termed IMPACT Policing in redeploying its resources as the need requires to target certain areas and offenders including implementing certain strategies and tactics such as foot patrol, bikes, cruisers, motorcycles, anti-crime units, surveillance, cameras, gang officers and narcotics detectives to increase its efficiency and effectiveness. The Chelsea Police Department Criminal Investigations Division worked with the Patrol Division's anti-crime unit conducted Operation IMPACT during the report period. The Operation was a collective "zero tolerance" effort targeting; gangs, prostitution and drug dealing in targeted areas of the city. This reallocation of personnel resources allowed for a more strategic and concentrated focus during those times and those specific areas where violence had become and was projected to be an issue. The time period for this operation was between June 2nd and October 31st 2010.

- **233 Arrests, a 54% increase from 2009**
- **224 Field Interview Observation Reports**

#### **Citizen Observer Text-a-Tip Community Alert System.**

The Chelsea Police Department utilized the Text to Tip Program in 2010 and received 122 tips over this time period, a 95% increase from 2009. The Chelsea Police received useful information from many of these anonymous tips including several credible tips on serious felonies including homicides. The police also used another important aspect of the Citizen Observer program, the "Community Alert Notification System." This program allowed the police to make an immediate electronic announcement of community alerts, real-time crime updates and postings of wanted posters. A media campaign to inform the community of the many features of Citizen Observer was aggressively pursued including the use of two bill boards, and posters adhered to all many MBTA bus shelters

#### **Implementation of a Domestic Violence High Risk Offender Team**

The cities of Chelsea, Revere and town of Winthrop and partner agencies successfully reached its goal by being awarded a \$380,000 federal grant from the Office of Violence Against Women. The program is called Community Awareness to Stop Abuse: Domestic Violence Intervention and Emergency Response Team (CASA DIVERT). The program will consist of a team of professional providers that aims to reduce and prevent domestic violence homicides by holding offenders accountable and providing services for victims and their children by refining and tightening existing relationships between police, courts, and community providers in the cities of Chelsea, Revere, and Winthrop. Through the use of risk assessment tools, CASA-DIVERT will identify victims at greatest risk of a serious re-assault or potential lethal attack.

### **GANG/VIOLENT CRIME**

CID investigated eleven (11) homicides in 2010, the unit working with the Massachusetts State Police Detectives assigned to the Suffolk County District Attorney's Office cleared nine (9) cases by arrest, conviction or indictment. CID personnel working with the FBI conducted two major undercover operations during 2010 aimed at targeting repeat offenders, career criminals and gang leadership in Chelsea that were engaged in violent criminal acts.



- Operation Crossroads was a multi-jurisdictional operation with the Chelsea Police, FBI and State Police targeting the crossroads at Fifth Street, Chestnut St., Bellingham Square and Fourth St. These streets were consistently registering a high number of calls for assistance and arrest by the Patrol Division. On the 8th of January 2010, a series of raids and search warrants were conducted and executed. Sixteen arrests were made to include eleven federal indictments. All sixteen individuals have been found guilty and have been sentenced to prison terms ranging from 7 1/2 years to 30 years in State and Federal Prison. All arrests were made in Chelsea and were Chelsea residents.

- Operation Royal Ruin was a coordinated Chelsea Police, FBI, Boston Police and State Police Operation. This twelve month operation which targeted Latin Kings in the Chelsea and Boston area as well as their leadership. This operation additionally identified and dismantled a firearms ring that involved making "straw" purchases in New Hampshire and Maine. A series of early morning raids on October 20th 2010, netted nineteen arrests of violent Latin Kings most of which are career offenders and armed career criminals. Twelve of the arrested were for Federal Indictments. The entire leadership structure of the Chelsea Latin Kings was indicted on the Federal level. This list included some of Chelsea most wanted individuals, and for the second time in 2010 addressed the Criminal Investigations Division's "top five violent offender list".

### **DRUG ENFORCEMENT**

In 2010, the Chelsea Police Drug Unit was successful in targeting specific areas of concern to citizens and business owners. Detectives utilized both covert and overt operations to suppress "curbside dealing". In 2010, the Unit applied for and received 20 search warrants, a 25% increase from 2009. The Unit participated in an additional 15 search warrants involving other neighboring jurisdictions, along with state and federal agencies, a 25% increase from 2009. As a result of Drug Unit operations, 74 arrests were made and \$20,392 was seized. Other highlights include:



- During the winter of 2010, The Unit conducted undercover operations within the Bellingham Square area targeting street level dealers and "brokers". Utilizing undercover officers from outside agencies along with members of DEA Group 2, this investigation, code name, "Silent Night" resulted in the issuance of 20 arrest warrants, of which 19 arrests have been made.



- In a joint Chelsea Police, State Police, U.S. Postal Investigators investigation, 3 suspects were charged with Attempted Armed Robbery, Poss. of a Firearm/Ammunition and Poss. Class B Cocaine. Information from a confidential informant resulted in the interception of a criminal organization which had been committing armed robberies of U.S. Postal Service money carriers. Acting on this information Chelsea, State and Postal Detectives, along with the State Police S.T.O.P team arrested 3 subjects immediately prior to committing an armed robbery of the Charlestown Post Office. A subsequent search warrant was executed in Chelsea which resulted in the seizure of cocaine, a pistol and a large amount of ammunition.

- A joint Chelsea Police and DEA Group 2 investigation resulted in the seizure of 3 kilos of cocaine from a tractor trailer bound for the Chelsea Produce Market.

- Search warrant executed by the Chelsea Police Drug Unit at 70 Pearl St, shutdown a large scale cocaine and OxyContin distribution network. 3 arrests were made, 1.5 kilos of cocaine with a street value of \$51,000, 459 OxyContin pills with a street value of \$36,720, Ammunition and \$14, 558 in US currency were seized.

## **SPECIALIZED UNITS**

### **Drug Unit**

The Criminal Investigation Division's Drug Unit upholds its Mission Statement to improving the quality of life for the citizens of Chelsea through the suppression of overt drug dealing, prostitution, and illegal gambling. This is made possible by targeting street level and mid-level drug dealing through undercover detectives, confidential informants and decoys. The Unit furthers this mission by forming task forces with local, state and federal agencies. Additionally, Detectives of the Drug Unit conduct random and unannounced administrative inspections of licensed social clubs to ensure compliance with City gaming ordinances. In 2010, two Detectives and one Sergeant were assigned to the unit. One detective is assigned full time to a DEA Task Force.



### **Gang Unit**

The Chelsea Police Gang Unit consists of two full-time, dedicated investigators and a supervisor. The Unit investigates all gang related incidents. One investigator is assigned to the F.B.I. Gang Task Force, but all investigators are members of the North Suffolk Gang Task Force, including the City of Revere and the Massachusetts State Police. All members attend monthly meetings to include the North Suffolk Gang Task Force and the Metro Gang Task Force meetings. The investigators also conduct training sessions with several agencies in the community. In 2010, of the eleven (11) recorded homicides in the city, seven (7) were documented as gang related. The unit also logged the seizure of eighteen (18) illegal firearms a 100% increase from 2009.

### **Domestic Violence/ Sexual Assault Unit**

The Domestic Violence Unit/ Sexual Assault Unit consist of two detectives and a civilian advocate. The Division investigates cases, reviews domestic and sexual abuse cases investigated by the Patrol Division, and conducts follow-up investigations. The Unit also directly investigates cases referred from the Suffolk County District Attorney's Office, the Attorney General's Cyber Crime Unit, the Department of Social Services, the Commonwealth of Massachusetts Disabled Person's Protection Commission and other service and health agencies in the Greater Boston area. One detective is assigned to the Domestic Violence Task Force, which consists of local agencies working together to raise awareness through outreach, education and support. In 2010, the Sexual Assault Section investigated one hundred and one (101) cases; twenty one (21) rapes, a 30% increase from 2009, three (3) Aggravated Rape, a 300% increase from 2009, six (6) Rapes of a child, 0% change from 2009, three (3) Statutory Rapes, a 35% reduction from 2009, (54) Indecent Assault and Battery offenses, a 17% increase from 2009. The Unit also investigated twenty (20) cases involving child neglect, investigated two (2) cyber crimes and secured six (6) search warrants. The Domestic Violence Section investigated and reviewed five hundred fifty-three (553) cases of Domestic Violence, an 8% increase from 2009 and conducted follow-up investigations on the issuance of three hundred sixty-five (365) restraining orders, a 1% reduction from 2009.

### **HOMICIDE STATS 2010:**

**IN 2010,  
THE CPD CLEARED  
9 OUT OF 11  
REPORTED HOMICIDES,  
BY WAY OF  
ARREST,  
INDICTMENT  
OR CONVICTION.**

### **LICENSING UNIT**

The Licensing Unit is staffed by one detective who is responsible for the issuance of all firearm related licenses and registering and maintaining the Sex Offender Registry (SOR). Massachusetts General Law ch.140 sec. 131 and the Massachusetts Gun Control Act of 1998 govern the issuance of licenses to carry firearms. The Detective conducts full criminal and mental health background checks on all applicants and renewals. In 2010, seventy seven (77) licenses to carry (LTC) permits and Firearm Identification Cards (FID) were issued. The Detective is also responsible for maintaining the (SOR) Sex Offender Registry, including assurance of compliance with Massachusetts General Law ch.6 sec.178D. In 2010, the unit registered ten (10) Level III and thirty-one (31) Level II offenders living or working in the city of Chelsea.

### **PROPERTY/BUSINESS CRIME UNIT**

The Property Crime Unit is led by a primary investigator and is assisted by other detectives as needed. This unit investigates property and business crimes committed in Chelsea. The Detective works with the Boston Clearing House – an organization of banks, credit unions, and other financial corporations who work with law enforcement regarding financial crimes. He also works closely with members of the Suffolk County and Middlesex County CPAC units, the FBI. Bank Robbery Task Force, Middlesex and Suffolk County Drug Units, the Drug Enforcement Agency (DEA) and U.S. Postal Inspectors. In 2010, the Unit investigated five hundred and ninety four (594) reported Breaking and Entering incidents, a 23% increase from 2009. The breakdown of these is as follows; eighty-one (81) reported commercial breaks, a 38% increase from 2009, one hundred sixty two (162) reported motor vehicle breaks, a 90% increase from 2009 and three hundred and thirty one (331) reported residential Breaking and Entering, a 0% change from 2009. The Unit also investigated nine (4) bank robberies that occurred in the City of Chelsea.

## PROFESSIONAL STANDARDS AND ADMINISTRATIVE DIVISION

CAPTAIN KENNETH D. MACDONALD

*The Division is comprised of the Professional Standards Division, Information Technology Sergeant, the Recruitment and Training Coordinator and all civilian support Personnel.*

**The Professional Standards Unit** is responsible for issuing new and revised Department policies, directives and procedures ensuring that they are compliant with the Massachusetts Police Accreditation Program. The goal of the Unit is to establish an environment effective in management, teamwork, empowerment, communication and professional development. The Department is committed to providing resources for long-range planning for future needs of the Department – services, staffing, facilities, equipment and technology.

**The Administrative Unit** consists of several independent, administrative components working with all Divisions. The Unit is responsible for the safe and secure operation and maintenance of Chelsea Police Headquarters including all State-mandated procedures relating to procedures for detainees.

**The Recruitment and Training Director** is responsible for background investigations. As Training Director, he coordinates training for all police personnel. He is the Department's Criminal Justice Information Systems (CJIS) representative which links the Department to Federal, State and other agencies and includes monitoring terminal use, enforcing system discipline, and assuring operational procedures are followed. He is the National Incident Based Reporting System (NIBRS) representative, coordinating with the Massachusetts State Police Fusion Center reporting accurate statistical information to the Massachusetts State Police Crime Reporting Unit and FBI, for all criminal activity in the City of Chelsea.

**The Information Technology Coordinator** maintains the Department's technology resources. He is actively involved in efforts to regionalize both voice and data communications among area public safety agencies, as well as being the administrator for the Police Department's website.

### **Attainment of State Accreditation**

The Chelsea Police Department was assessed by a team from the Massachusetts Police Accreditation Commission in 2010 who examined various aspects of the Chelsea Police Department's Policies & Procedures, Rules & Regulations, Operations and Facilities which now conform with CALEA National Standards adopted by the Commission on Accreditation for Law Enforcement Agencies, Inc. and as a result recommended that the CPD become State Accredited by the Commission. These 365 national standards [253 Mandatory Standards and 112 Voluntary Standards] reflect the best professional practices in each area of police management, administration, operations and support services. The official Accreditation Ceremony was held on September 24, 2010 at the Hopkinton Police Department. Although participation in the Accreditation Process was strictly voluntary, the attainment of this status now ensures that the delivery of police services in the City of Chelsea shall be at the highest level of professionalism and integrity possible. Of the 351 cities and towns in the Commonwealth, the CPD is now one of only thirty law enforcement agencies to receive this status that symbolizes professional excellence and expresses an agency's desire and commitment to voluntarily meet and maintain standards that have been established for the profession, by the profession.

2010  
STATISTICAL CRIME DATA





# 2010 STATISTICAL CRIME DATA Sector 1

	2006	2007	2008	2009	2010
Homicide	1	0	0	0	0
Rape	8	3	9	4	6
Robbery	15	10	8	6	12
Agg. Assault	21	33	27	23	27
Burglary	55	79	58	51	65
Larceny	98	111	139	128	121
MV Theft	34	26	32	30	22
<b>Violent</b>	<b>45</b>	<b>46</b>	<b>44</b>	<b>33</b>	<b>45</b>
<b>Property</b>	<b>187</b>	<b>216</b>	<b>229</b>	<b>209</b>	<b>208</b>
<b>Total</b>	<b>232</b>	<b>262</b>	<b>273</b>	<b>242</b>	<b>253</b>

	2009	2010	% Chg	Net Chg.
Homicide	0	0	0%	0
Rape	4	6	50%	2
Robbery	6	12	100%	6
Agg. Assault	23	27	17%	4
Burglary	51	65	27%	14
Larceny	128	121	-5%	-7
MV Theft	30	22	-27%	-8

# CRIME DATA

## Sector 2

	2006	2007	2008	2009	2010
Homicide	0	0	0	0	2
Rape	10	7	10	15	8
Robbery	32	23	24	40	18
Agg. Assault	70	78	67	68	71
Burglary	76	96	103	89	106
Larceny	172	194	195	204	166
MV Theft	74	63	74	52	50
<b>Violent</b>	<b>112</b>	<b>108</b>	<b>101</b>	<b>123</b>	<b>99</b>
<b>Property</b>	<b>322</b>	<b>353</b>	<b>372</b>	<b>345</b>	<b>322</b>
<b>Total</b>	<b>434</b>	<b>461</b>	<b>473</b>	<b>468</b>	<b>421</b>

	2009	2010	% Chg	Net Chg.
Homicide	0	2	200%	2
Rape	15	8	-47%	-7
Robbery	40	18	-55%	-22
Agg. Assault	68	71	4%	3
Burglary	89	106	19%	17
Larceny	204	166	-19%	-38
MV Theft	52	50	-4%	-2

# CRIME DATA

## Sector 3

	2006	2007	2008	2009	2010
Homicide	0	0	1	0	1
Rape	16	6	7	18	14
Robbery	30	42	34	44	44
Agg. Assault	77	81	88	84	94
Burglary	69	88	76	85	79
Larceny	191	176	215	207	178
MV Theft	81	53	60	48	28
<b>Violent</b>	<b>123</b>	<b>129</b>	<b>130</b>	<b>146</b>	<b>153</b>
<b>Property</b>	<b>341</b>	<b>317</b>	<b>351</b>	<b>340</b>	<b>285</b>
<b>Total</b>	<b>464</b>	<b>446</b>	<b>481</b>	<b>486</b>	<b>438</b>

	2009	2010	% Chg	Net Chg.
Homicide	0	1	100%	1
Rape	18	14	-22%	-4
Robbery	44	44	0%	0
Agg. Assault	84	94	12%	10
Burglary	85	79	-7%	-6
Larceny	207	178	-14%	-29
MV Theft	48	28	-42%	-20



# CRIME DATA

## Sector 4

	2006	2007	2008	2009	2010
Homicide	0	2	2	0	8
Rape	33	53	30	30	53
Robbery	110	138	155	174	120
Agg. Assault	306	248	325	290	275
Burglary	176	184	222	256	222
Larceny	451	444	602	509	454
MV Theft	146	96	122	132	94
<b>Violent</b>	<b>449</b>	<b>441</b>	<b>512</b>	<b>494</b>	<b>456</b>
<b>Property</b>	<b>773</b>	<b>724</b>	<b>946</b>	<b>897</b>	<b>770</b>
<b>Total</b>	<b>1,222</b>	<b>1,165</b>	<b>1,458</b>	<b>1,391</b>	<b>1,226</b>

	2009	2010	% Chg	Net Chg.
Homicide	0	8	800%	8
Rape	30	53	77%	23
Robbery	174	120	-31%	-54
Agg. Assault	290	275	-5%	-15
Burglary	256	222	-13%	-34
Larceny	509	454	-11%	-55
MV Theft	132	94	-29%	-38



# CRIME DATA

## City-wide

	2007	2008	2009	2010
<b>Total Arrests</b>	<b>1,938</b>	<b>2,247</b>	<b>2,124</b>	<b>2,484</b>
<b>Protective Custodys</b>	<b>470</b>	<b>435</b>	<b>460</b>	<b>510</b>
<b>Total Summons</b>	<b>349</b>	<b>492</b>	<b>571</b>	<b>650</b>

	2009	2010	% Chg	Net Chg.
<b>Homicide</b>	<b>0</b>	<b>11</b>	<b>1100%</b>	<b>11</b>
<b>Rape</b>	<b>72</b>	<b>84</b>	<b>17%</b>	<b>12</b>
<b>Robbery</b>	<b>267</b>	<b>199</b>	<b>-25%</b>	<b>-68</b>
<b>Agg. Assault</b>	<b>470</b>	<b>475</b>	<b>1%</b>	<b>5</b>
<b>Burglary</b>	<b>482</b>	<b>473</b>	<b>-2%</b>	<b>-9</b>
<b>Larceny</b>	<b>1,052</b>	<b>925</b>	<b>-12%</b>	<b>-127</b>
<b>MV Theft</b>	<b>264</b>	<b>196</b>	<b>-26%</b>	<b>-68</b>

# CITY-WIDE CALLS FOR SERVICE

	2006	2007	2008	2009	2010
Out of City	1,094	1,041	1,104	989	939
Sector 1	3,258	3,290	3,483	3,093	3,216
Sector 2	5,679	5,691	6,243	5,789	5,510
Sector 3	5,379	5,645	6,332	6,099	5,782
Sector 4	24,834	25,626	27,650	28,596	29,447
Total	40,244	41,293	44,812	44,566	44,894

		2009	2010	% Chg	Net Chg.
Out of City		989	939	-5%	-50
Sector 1		3,093	3,216	4%	123
Sector 2		5,789	5,510	-5%	-279
Sector 3		6,099	5,782	-5%	-317
Sector 4		28,596	29,447	3%	851



**The Chelsea Police Department**

## **Mission Statement**

We, the members of the Chelsea Police Department, are committed, take pride and are dedicated to be responsive to our community in the delivery of quality police services.

We recognize and accept our responsibility to maintain order while affording dignity and respect to every individual. Our objective is to improve the quality of life through community partnerships and thereby promote a safe and secure community for everyone.

**Accredited in 2010.**



The Chelsea Police Department  
19 Park Street  
Chelsea, Massachusetts 02150  
617. 466. 4800

