

# CHELSEA

## POLICE DEPARTMENT



## 2008 ANNUAL REPORT

**BRIAN A. KYES**  
**CHIEF OF POLICE**



The Chelsea Police Annual Report 2008

# TABLE OF CONTENTS

Message from the Chief.....	4
City Manager's Message.....	5
Mission Statement.....	6
2009 Organizational Chart.....	8
Patrol Division.....	10
Community Service Division.....	12
Criminal Investigation Division.....	14
Professional Standards and Administrative Division.....	18
2008 Statistical Data.....	20





## A MESSAGE FROM THE CHIEF

I am extremely proud to share with you the 2008 Annual Report of the Chelsea Police Department. The CPD continues to excel in pursuing our community oriented mission and related goals and objectives for the citizens of the City of Chelsea. As I personally visit and observe many police departments throughout the Commonwealth, I am further convinced that we are absolutely one of the finest law enforcement agencies in the state. As the Chief of Police, I am truly honored and privileged to wear the same uniform and work along side of our Police Officers who sacrifice on a daily basis to serve our citizens in a highly professional manner.

In 2008, in an effort to make a positive difference in our community, we saw a healthy cadre of community outreach programs and initiatives continue to flourish at the Chelsea Police Department. This includes our highly successful Community Action Team Program which challenges community residents to set the priorities and agenda for the department.

It was also a year for continuing our department-wide commitment to excellence through our in-service training efforts. We believe that our efforts in this area have placed department personnel firmly among the best trained and most professional police departments in this state. We will continue to find new, innovative and progressive means of providing professional training for our officers with an emphasis on problem solving and community building.

I am also happy to report that the community based mission of the CPD has been solidified as the “norm” and accepted direction of the agency when it comes to partnering with the community in the delivery of providing professional police services by our Officers. Based on continual feedback from both within and outside the Department, I can also report that a positive atmosphere of teamwork and spirit of cooperation has continued to grow within the agency during 2008.

On behalf of the Chelsea Police Department, please accept my appreciation for the valued support and direction that you as community stakeholders have given to the men and women of the Chelsea Police Department during the past year. If there are any questions concerning the statistical data detailed in this report or if you have any requests for additional information on any item, please feel free to contact me at your convenience. In addition, you may visit our website at [www.ChelseaPolice.com](http://www.ChelseaPolice.com) for updated information and timely reports as they become available.

In closing, I would like to express my sincerest gratitude to each and every employee of the Chelsea Police Department, sworn and civilian, for their continued dedication and commitment in making 2008 one of the CPD’s most productive years in partnering with our community and strengthening our agency. Going forward, I pledge to continually incorporate technology, accountability and ingenuity in combating crime and addressing those quality of life issues that lead to crime as well as serving the community. All of this is in an effort to make Chelsea a city that we are all proud of.

Sincerely,

A handwritten signature in black ink that reads "Brian Kyes". The signature is written in a cursive, flowing style.

Brian A. Kyes  
Chief of Police



## FROM THE CITY MANAGER

I am pleased to share with you this report and the news of the continued outstanding work and exceedingly high level of accomplishment that combines to further the tremendous reputation the Chelsea Police Department has earned. Through the Department's dedication and achievement, our local men and women in blue have been able to both protect the public and advance the city's goals for its overall rejuvenation. Fortunate are we all to have such a force to call upon.

Crime rates do not tell the entire story of CPD. Sure, the statistical analysis of crime reflects positively on a Department whose mixture of instinct and hard work has ferreted out crime and made our community a safer place to live, work and visit. Yet, the statistics tell only part of the story, as CPD and its officers are leaders in more than just traditional policing programs. In addition to embracing national efforts like GREAT and PAL, CPD has been a leader in developing initiatives worthy of national emulation, including the PACT Program, Officer in Residence Program and the Department's work on domestic violence. The institution of a community service officer and a soon to be established newcomer advocate continue to show the lengths at which CPD is reaching out to produce even greater impact.

In fact, among the processes that CPD has embraced and has recognized for is its support for partnerships and collaborations. While law enforcement was once a jurisdictional quagmire, CPD has worked well to break down historical barriers and helped elevate the cause of public safety throughout the region and country. CPD has focused upon strengthening relationships on the federal, state and local levels in areas like anti-gang and homeland security efforts. Equally as important, CPD works with prevention and intervention specialists, both in the public and non-profit worlds, to better understand the issues facing our city and our residents, to offer support for the missions of those organizations, and to provide greater coordination and cooperation to maximize the efforts and promote the greater success of those partnerships and collaborations.

Under the direction of a terrific police chief, Chief Brian Kyes, an accomplished command staff and a dedicated patrol, CPD is a well-functioning City department that is meeting and exceeding its local mandate. The beneficiaries continue to be those who have come to expect and appreciate such distinguished performance from such a gallant force.

A handwritten signature in black ink that reads "Jay Ash". The script is fluid and cursive.

Jay Ash  
City Manager



# MISSION STATEMENT

We, the members of the Chelsea Police Department,  
are committed, take pride and are dedicated to be  
responsive to our community in the delivery of  
quality police services.

We recognize and accept our responsibility to maintain  
order while affording dignity and respect to every individual.  
Our objective is to improve the quality of life through  
community partnerships and thereby promote a safe  
and secure community for everyone.



**C**OMMITMENT. **P**RIDE. **D**EDICATION.

# IN MEMORIAM

*This Annual Report is dedicated to the memory of our fallen Officers.*

*1871*

On July 7, 1871, the first death of a Chelsea Police Officer in the line of duty was recorded. For no explainable reason a man approached David Weber, on duty at the time, and shot him in the region of the heart. Officer Weber died of his wound.

*1924*

On August 6, 1924, Patrolman John J. McKenzie (Iron Mike) was hit by a car while directing traffic on Broadway and Eleanor Street. He died from his injuries on October 13, 1924 at the age of 52. He was on the force for 18 years and left behind a wife, five sons and three daughters. He was appointed as a reserve officer on November 5, 1906 and as a permanent officer on October 18, 1911.

*1930*

On November 3, 1930, Patrolman Thomas F. Gainard was directing traffic on Broadway and Webster Avenue when he was struck by a car. He died four hours later. He was 63 years old, and left behind a wife, three sons and two daughters. He was appointed as a reserve officer on September 12, 1899 and as a permanent officer on February 29, 1904. He was on the force for 31 years.

*1969*

On December 18, 1969 Patrolman James E. Buckley was struck by a car and severely injured. He died on February 2, 1970 at the age of 27, after five years on the police force. He left behind a wife and three sons. He was appointed as a reserve officer on August 31, 1964 and a permanent officer on January 17, 1967.

*1980*

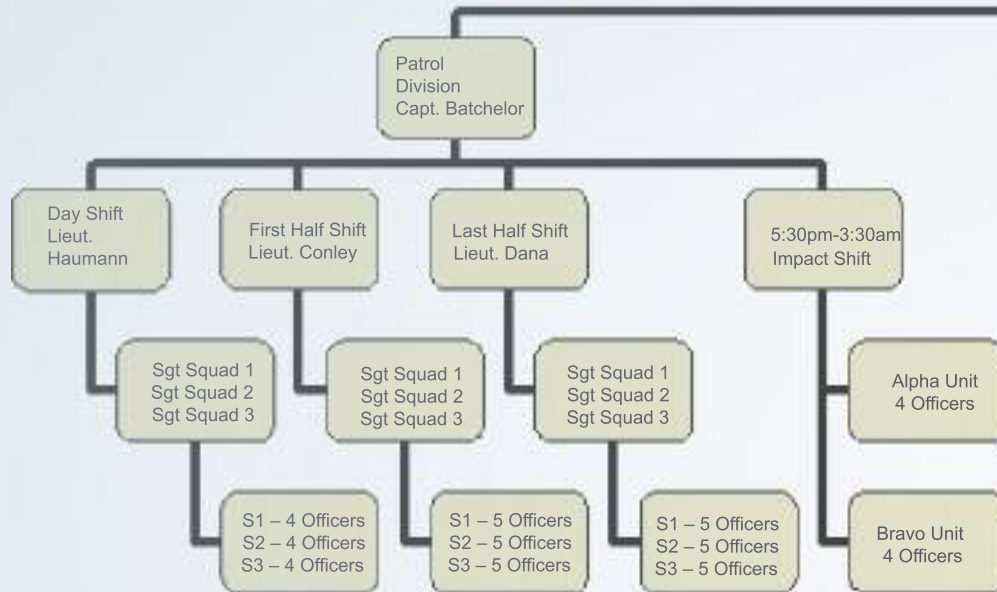
On July 20, 1980 Sergeant Arthur Cashin was killed in Bellingham Square. Sergeant Cashin was on his way back to the police station when he pulled over a car for a traffic violation. As he approached the driver to ask for his license, the driver jumped out of the car and knocked Cashin to the ground. The driver then grabbed Cashin's gun and shot him in the back, killing him. He was 37 years old and a member of the force for nine years. He left behind a wife and two daughters. He was appointed as a reserve officer on May 17, 1971 and a patrolman on May 24, 1971. He was appointed Sergeant on July 26, 1977.

*1985*

In February of 1985, Sergeant Raymond Cimino suffered a heart attack during police training. He passed away on February 28th of that year, leaving behind his wife and five children. He was appointed a reserve officer on June 9, 1975 and permanent officer on March 3, 1980.

# *An Organizational View of the Department's Ranking Structure*

*Effective February 1, 2009*



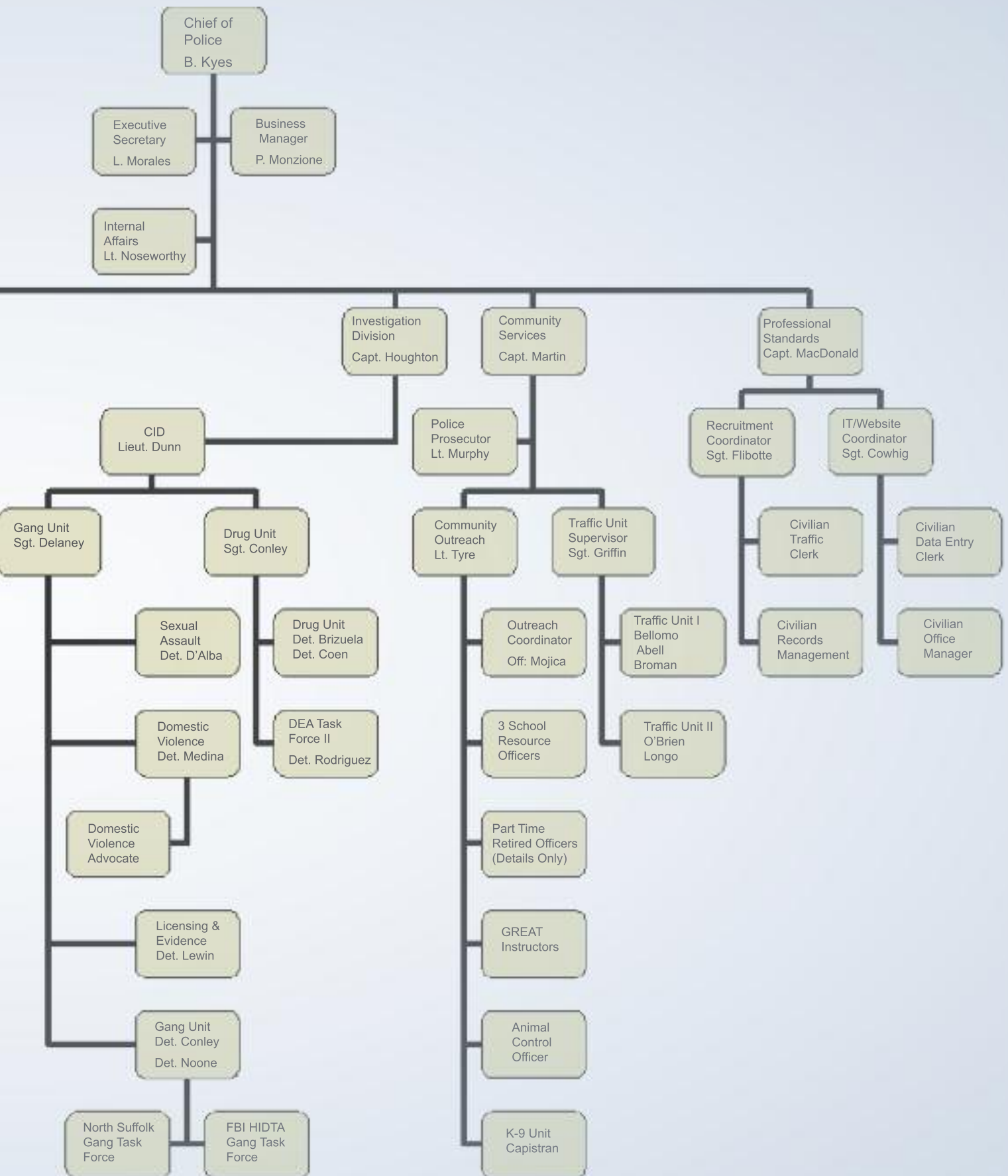
## *Professional Staffing:*

**Full Time Officers: 93**

**Civilian Personnel: 8**

**Animal Control Officer: 1**

**2008 Budget: \$ 7,764,711.00**



# PATROL DIVISION

CAPTAIN DAVID BATCHELOR

The Chelsea Police Patrol Division consists of one Captain, three Lieutenants, nine Sergeants, and approximately forty seven Patrol Officers..

Patrol shifts are non-rotating and consist of three eight-hour shifts, and one 10½ hour impact shift. The eight hour shift consists of the *Day Shift*, the *First Half Shift* and the *Last Half Shift*. Each shift is comprised of one Lieutenant, three Sergeants and three squads of patrol officers. A Lieutenant commands each shift and each squad is lead by a Sergeant. The “Four” shift is known as the *Impact Shift*, which covers both the first half and the last half when calls for service are at their highest.

The Patrol Division is the largest division in the Chelsea Police Department. It operates year-round-seven days a week, twenty-four hours a day. The function of the Patrol Division is to provide uniformed patrol coverage to all areas of the City. Officers conduct patrols on foot, bicycle, and in motor vehicles. They respond to emergencies such as crimes in progress, motor vehicle accidents, injuries, illness, and fires. They routinely investigate citizen complaints, arrest offenders, appear in court, provide traffic control and enforcement and attend community-based meetings.

The primary goal of the Patrol Division is the prevention of crime and disorder by adhering to the Community Policing Philosophy; which was adopted by this Department over fifteen years ago. Under this philosophy, officers are assigned to designated areas of the city, called sectors. Each officer has the responsibility of addressing the concerns in their area with the assistance of specialized units and community members.

The Patrol Division additionally provides service to the community by responding to emergency 9-1-1 calls on a daily basis. Annually the Chelsea Police Department receives approximately 35,000 calls for service. Of the 35,000 calls received, approximately 5,500 are documented as incidents requiring reports. The Department also investigates an average of 700 motor vehicle accidents per year and arrests approximately 2,000 individuals annually.

**Chelsea Police  
Headquarters**



**2008  
Newly purchased  
police cruiser**

**Academy  
Graduates  
Class of 2008**



# COMMUNITY SERVICE DIVISION

## CAPTAIN EDWARD MARTIN

The newly created Community Service Division is responsible for a number of police and community functions. The unit is comprised of the Traffic Unit, Canine Unit, School Resource Officers, Homeland Security, Community Outreach and the Animal Control Officer.

The **School Resource Officers** are placed in various schools throughout the city in a partnership between the Police Department and the Chelsea Public Schools to increase safety in the schools and foster a spirit of openness between the youths and the Police Department. Currently Officers are assigned to *Chelsea High School, Clark Middle School, and Wright & Brown Middle Schools*. The Officers assigned as School Resource Officers have been trained and certified in this special classification.

The Department has reinstituted the **G.R.E.A.T. Program**, Gang Resistance Education and Training in the elementary and middle schools. The program's goal is to teach our youths the hazards and pitfalls of gangs before they are pressured to join. The program is taught by six officers who have been nationally certified after an intense two week course. This past year 153 students graduated from the program. Complimenting this program is the **PAL program** (*Police Athletic League*), which is run by School Resource Officers every Tuesday night at the Community School.

**Resident Officer Program.** The Department's nationally recognized partnership was developed to have Chelsea Police Officers live in residence at public and private housing complexes. The purpose is to provide extra security, organize the residents, help stop crime and eradicate issues that could affect the quality of residential living. Currently officers reside in apartments managed by the Chelsea Housing Authority, 855 Broadway, and 300 Admiral Hill.



**The Canine Unit:** In February of 2009, two new members of the unit were introduced to the public; veteran Officer Joe Capistran and his partner, "*Ancho*", a year and a half old German Shepherd. Both Officer and the canine graduated from the Boston Police K9 training program and are a major asset to the Department.

**The Animal Control Officer** is in charge of all facets relevant to domesticated and wild animals throughout the city. The ACO was recently equipped with a microchip reader, which allows him to identify any lost or injured animal that has a microchip implanted.

**The Community Resource Officer**, a newly created position, is tasked with partnering with the many community service groups in Chelsea. The current CRO, who prior to joining the Department worked in the Department's Conflict Intervention Unit resolving landlord-tenant and neighborhood disputes,



## Homeland Security

*The Unit represents the City of Chelsea in various State and Federal security initiatives to protect residents and businesses in the city.*

continues to use his skills in these areas. The Community Service Officers are responsible for the establishment of crime watches throughout the city. This Division was responsible for the reestablishment and production of a very successful “*National Night Out*” in August of 2008. The Division will continue to advance community relations in 2009 with the addition of a *Community Outreach Coordinator*. This function will exist to assimilate newcomers to our country and community. The position will be funded by the Massachusetts General Hospital.

**The Traffic Unit** is responsible for the control and education of the motoring public as it pertains to the laws of the Commonwealth and the Ordinances of the City. Its main directive is to create a safe environment for the citizens of Chelsea and those who visit or work here. The unit consists of five Officers working the hours of 7:30am-1130pm. *In 2008, the Department issued 8,834 motor vehicle citations throughout the City for various violations. The Traffic Unit was responsible for 80% or 6,964 of those citations.*

The unit also participated successfully in the following nationwide programs; *Over the Limit under Arrest*, targeting impaired drivers, *Click it or Ticket*, the national seat belt enforcement initiative, and *Road Rage*, a program aimed at getting aggressive drivers off the road. The Unit has also worked with The Mass State Police Truck Team, Governor’s Auto Theft Task Force, and the Registry of Motor Vehicle’s Compliance Unit. The Traffic Unit plays an important role in coordinating safety for *Chelsea Day*, *River Revel*, *4th of July Celebration*, and *National Night Out*.

The **Court Prosecutor** for the Department interacts on a daily basis with the District Attorney and the court’s various departments such as Probation and the Clerk of Court. The Court Prosecutor reviews all reports submitted by the Department’s Officers ranging from an arrest or warrant to complaints. Additionally, she is responsible for the scheduling of all court appearances.

**IN 2008, THE COURT  
PROSECUTOR’S  
OFFICE PROCESSED:**

- ✓ **342 CRIMINAL WARRANTS**
- ✓ **495 SUMMONS**
- ✓ **561 CRIMINAL COMPLAINTS**
- ✓ **1,812 ARRESTS**
- ✓ **3,137 TRAFFIC APPEALS**

# CRIMINAL INVESTIGATION DIVISION

CAPTAIN KEITH E. HOUGHTON

*The Chelsea Police Department's Criminal Investigation Division (CID) investigates criminal activities that occur in the City of Chelsea or has an effect on the City of Chelsea and its citizens. In 2008, the CID investigated over 900 cases and monitored crime trends in the City and the Greater Boston area.*

*The Criminal Investigation Division's twelve detectives work closely with investigators from the State Police, federal agencies and surrounding cities and towns in sharing resources, personnel and information. CID personnel are also affiliated with several task forces that have been established to address specific types of crimes, such as narcotics distribution, gang violence, prostitution, burglaries, bank robberies, car theft, computer or cyber crime, financial crimes as well as warrant apprehension.*

## 2008 INITIATIVES AND RESULTS

**Operation Rapid Response** – The Chelsea Police Department Criminal Investigations Division, which includes the Chelsea Police Gang and Drug Units conducted “OPERATION RAPID RESPONSE ” a focused enforcement targeting illegal prostitution, drug dealing and gang violence. The operation period was June 19, 2008 through September 10, 2008. The Operation was deemed successful in reducing violent crime and eliminating prostitution for this time period. The use of targeted operations has been a key element of increased police presence during the summer months when criminal activity in the city peaks. The Operation was a collective “zero tolerance” effort targeting gangs, prostitution and drug dealing in specific areas of the City. The Operation resulted in thirty-three (33) arrests of prostitutes, twenty-one (21) gang members arrested, seven (7) charged with illegal possession of firearms nineteen (19) arrests for narcotics dealing (2.2 kilograms of cocaine recovered). During the operational period the Department continued to partner with the Massachusetts State Police Gang Unit and cleared twenty (20) active warrants for violent offenders residing in Chelsea. The Operation resulted in a total of one hundred thirty-seven (137) arrests.

During the spring and summer of 2008, the unit conducted undercover operations within the Bellingham Square area targeting open air drug dealing. As a result of this investigation, arrest warrants were sought for seventeen (17) individuals. This investigation also involved the DEA, Everett and State Police.

The Unit completed an almost two (2) year investigation into illegal drug dealing and “fencing” operations conducted from within a local taxi company. As a result of this investigation, the target was indicted and plead guilty to Distribution of a Class B substance and other charges. That individual was sentenced to three (3) years in prison. This investigation netted over \$111,682 in cash and recovered thousands of dollars in stolen merchandise, and the company's taxi license was revoked.

In a joint Chelsea Police and U.S. Postal Police investigation, two suspects were charged with Trafficking Cocaine. A controlled delivery of two (2) kilos of cocaine was made using undercover operatives. The estimated street value of these kilos was \$50,000.

In a joint Chelsea Police and FBI Human Trafficking investigation, eight illegal sex workers were arrested after contacted through "Craig's List" by an undercover operative. During that operation a subsequent drug arrest led to the seizure of drugs and \$54,181 in cash.

In a joint Chelsea Police and DEA investigation, eighty-four (84) Kilos bound for Chelsea were seized in Lynn.

*From January 1, 2008  
thru December 31, 2008  
the Drug Unit seized  
over \$149,579.00 in  
"street value" of illegal  
narcotics within the  
City of Chelsea  
and \$165,804.00 in  
U.S. Currency related to  
illegal narcotics sales.*

## SPECIALIZED UNITS

### DRUG UNIT

The Criminal Investigation Division's Drug Unit upholds its mission statement to improving the quality of life for the citizens of Chelsea through the suppression of overt drug dealing, prostitution, and illegal gambling, by targeting street level and mid-level drug dealing through the use of undercover detectives, confidential informants and decoys. The Unit furthers this mission by forming task forces with local, state and federal agencies. Additionally, detectives of the Unit conducted random and unannounced administrative inspections on licensed social clubs to ensure compliance with city gaming ordinances. Currently there are two detectives and one sergeant assigned to the Unit. One detective is assigned full time to the DEA Task Force. The Unit also applied for and secured eleven (11) Search Warrants including two (2) for safe deposit boxes.

### GANG UNIT

The Gang Unit consists of two full time dedicated investigators and a supervisor. The Unit investigates and examines all gang related incidents. One investigator is assigned to the F.B.I. Gang Task Force; all investigators are members of the North Suffolk Gang Task Force which includes the City of Revere and the Massachusetts State Police. All members attend monthly meetings to include the North Suffolk Gang Task Force and the Metro Gang Task Force. The investigators also conducted training sessions with several agencies in the community. In 2008 there were thirty-three (33) serious crimes reported involving gangs, twelve (12) of which hand guns were reported. For that same period there were thirty-three (33) serious felony arrests involving gang members, twelve (12) of those arrest involved hand guns.

## **DOMESTIC VIOLENCE/ SEXUAL ASSAULT UNIT**

The Domestic Violence Unit/ Sexual Assault Unit consist of two detectives and a civilian advocate. The Division reviews domestic and sexual abuse cases investigated by the Patrol Division, and conducts follow-up investigations. The Unit also directly investigates cases referred from the Suffolk County District Attorney's Office, Attorney Generals Cyber Crime Unit, the Department of Social Services, the Commonwealth of Massachusetts Disabled Person's Protection Commission and other service and health agencies in the Greater Boston area. One detective is assigned to the Domestic Violence Task Force, a group of local agencies working together to raise awareness through outreach, education and support.

The Unit investigated nineteen (19) Rapes, six (6) Aggravated Rapes, five (5) Rapes of a Child, ten (10) Statutory Rapes, twenty-five (25) Indecent Assault and Battery offenses, sixty-nine (69) Sexual Assault cases and secured eight (8) search warrants. The Unit also investigated and reviewed four hundred thirty-eight (438) cases of Domestic Violence and conducted follow-up investigations on the issuance of three hundred seventy-four (374) restraining orders issued in 2008.

## **PROPERTY/BUSINESS CRIME UNIT**

The Property Crime Unit is led by one primary investigator and is assisted by other detectives as needed. This unit investigates property and business crimes that are committed in Chelsea. The detective works with the Boston Clearing House – an organization of banks, credit unions, and other financial corporations, who work with law enforcement regarding financial crimes. The detective also works closely with members of the Suffolk County and Middlesex County CPAC units, the F.B.I. Bank Robbery Task Force, Middlesex and Suffolk County Drug Units, the Drug Enforcement Agency (DEA) and U.S. Postal Inspectors.

In 2008, the Unit investigated a total of four hundred sixty-two (462) reported Breaking and Entering incidents. The results of these breaks are as follows; seventy-two (72) reported commercial breaks, one hundred twenty-seven (127) reported motor vehicle breaks and two hundred fifty-four (254) reported residential Breaking and Entering. The Unit also investigated nine (9) bank robberies that occurred in the City of Chelsea.

## **LICENSING UNIT**

The Licensing Unit is staffed by one detective who is responsible for the issuance of all firearm related licenses and registering and maintaining the Sex Offender Registry (SOR). Massachusetts General Law ch.140 sec. 131 and the Massachusetts Gun Control Act of 1998 govern the issuance of licenses to carry firearms. The detective conducts full criminal and mental health background checks on all applicants and renewals. In 2008, fifty-six (56) licenses to carry (LTC) permits were issued as well as twenty (20) Firearm Identification Card (FID). The detective is also responsible for maintaining the (SOR) Sex Offender Registry including the ensuring compliance with Massachusetts General Law ch.6 sec.178D. In 2008 the unit registered eleven (11) Level III and thirty (30) Level II offenders living or working in the City of Chelsea.



# PROFESSIONAL STANDARDS AND ADMINISTRATIVE DIVISION

CAPTAIN KENNETH D. MACDONALD

*The Division is comprised of the Professional Standards Division, Information Technology Sergeant, the Recruitment and Training Coordinator and all civilian support Personnel.*

**The Professional Standards Unit** is responsible for issuing new and revised department policies, directives and procedures ensuring that they are compliant with the Massachusetts Police Accreditation Program. The goal of the Unit is to establish an environment effective in management, teamwork, empowerment, communication and professional development. The Department is committed to providing resources for long-range planning for future needs of the Department – services, staffing, facilities, equipment and technology.

**The Internal Affairs Unit** works directly for the Chief of Police and conducts thorough and impartial investigations as a result of complaints submitted by citizens, prisoners and other Chelsea Police Officers. The Unit provides citizens with a fair process for redress of legitimate complaints against officers and also protects officers from false or unfounded allegations of misconduct. The Unit is comprised of one superior officer whose primary objective is to protect the public, protect the employee, and protect the Police Department. In 2008, the Internal Affairs Unit conducted 46 investigations as a result of citizen complaints and/or internal officer related complaints.

**The Administrative Unit** consists of several independent, administrative components working with all Divisions. The Unit is responsible for the safe and secure operation and maintenance of Chelsea Police Headquarters including all State-mandated procedures relating to procedures for detainees.

**The Recruitment and Training Director** is responsible for background investigations of all new hires for both the Police and Fire Departments. He is also a back-up internal affairs investigator. As Training Director, he coordinates training for all police personnel and is a certified Breath Test Instructor by the Massachusetts Municipal Training Council. He is the Department's Criminal Justice Information Systems (CJIS) representative which links the Department to Federal, State and other agencies and includes monitoring terminal use, enforcing system discipline, and assuring operational procedures are followed. He is the National Incident Based Reporting System (NIBRS) representative, coordinating with the Massachusetts State Police Fusion Center reporting accurate statistical information to the Massachusetts State Police Crime Reporting Unit and FBI, for all criminal activity in the City of Chelsea.

**The Business Manager** reports directly to the Chief of Police and is responsible for oversight on matters relating to the Departmental Budget. The position provides resources, guidance and fiscal control to Division Commanders in addressing daily operations of the Chelsea Police Department. Additional responsibility includes ensuring compliance on state and federal grants that the Department receives.

## **2008 ACCOMPLISHMENTS :**

*Formulated eleven new department policies and revised thirty existing policies*

*Upgraded cell detection prisoner watch system*

*Installed and maintained multimedia in-service training system*

*Conducted in-house 911 professional training for dispatchers*

*Participated in regional police communications network*

*Coordinated communications link between the City and Criminal History Board*

*Expanded the existing Chelsea View Camera System*

*Oversaw fourteen new officers through Field Officer Training Program*

*Conducted background investigations on thirty-five police candidates, two civilian dispatchers, three police interns and nineteen fire department candidates*

*Coordinated department's in-service training program*

*Coordinated the purchase of department's equipment including vehicles and responsible for vehicle maintenance.*

**The Information Technology Coordinator** maintains the Department's technology resources. He is actively involved in efforts to regionalize both voice and data communications among area public safety agencies. He is an advisor and technical coordinator for the City's surveillance camera project (Chelsea View) and is the administrator for the Police Department's website. The Information Technology Coordinator Sergeant has redesigned the website, providing the public with a tool for direct communication to the Department.

**The Records Manager** is responsible for managing and disseminating official police reports to the public and courts.

**The Traffic Records Manager** is responsible for records relating to motor vehicle citations and parking tickets as well as filing all traffic accident reports.

**The Executive Secretary** is responsible for personnel record keeping, and promotional and retirement documents. This position also fields outside inquiries.

**The Office Manager** is responsible for payroll functions and external billing. She also tracks attendance and aids in the Accreditation Program.

# 2008 STATISTICAL DATA



# SECTOR 1

## CRIME DATA

	2004	2005	2006	2007	2008	Total
Homicide	0	0	1	0	0	1
Rape	2	1	8	3	9	23
Robbery	15	20	15	10	8	68
Agg. Assault	31	20	21	33	27	132
Burglary	42	41	55	79	58	275
Larceny	73	81	98	111	139	502
MV Theft	37	28	34	26	32	157
<b>Violent</b>	<b>48</b>	<b>41</b>	<b>45</b>	<b>46</b>	<b>44</b>	<b>224</b>
<b>Property</b>	<b>152</b>	<b>150</b>	<b>187</b>	<b>216</b>	<b>229</b>	<b>934</b>
<b>Total</b>	<b>200</b>	<b>191</b>	<b>232</b>	<b>262</b>	<b>273</b>	<b>1,158</b>

	2007	2008	% Chg	Net Chg.
Homicide	0	0	0%	0
Rape	3	9	200%	6
Robbery	10	8	-20%	-2
Agg. Assault	33	27	-18%	-6
Burglary	79	58	-27%	-21
Larceny	111	139	25%	28
MV Theft	26	32	23%	6
<b>Violent</b>	<b>46</b>	<b>44</b>	<b>-4%</b>	<b>-2</b>
<b>Property</b>	<b>216</b>	<b>229</b>	<b>6%</b>	<b>13</b>

# SECTOR 2 CRIME DATA

	2004	2005	2006	2007	2008	Total
Homicide	0	0	0	0	0	0
Rape	11	17	10	7	10	55
Robbery	22	21	32	23	24	122
Agg. Assault	76	82	70	78	67	373
Burglary	101	84	76	96	103	460
Larceny	165	125	172	194	195	851
MV Theft	76	66	74	63	74	353
<b>Violent</b>	<b>109</b>	<b>120</b>	<b>112</b>	<b>108</b>	<b>101</b>	<b>550</b>
<b>Property</b>	<b>342</b>	<b>275</b>	<b>322</b>	<b>353</b>	<b>372</b>	<b>1,664</b>
<b>Total</b>	<b>451</b>	<b>395</b>	<b>434</b>	<b>461</b>	<b>473</b>	<b>2,214</b>

	2007	2008	% Chg	Net Chg.
Homicide	0	0	0%	0
Rape	7	10	43%	3
Robbery	23	24	4%	1
Agg. Assault	78	67	-14%	-11
Burglary	96	103	7%	7
Larceny	194	195	1%	1
MV Theft	63	74	17%	11
<b>Violent</b>	<b>108</b>	<b>101</b>	<b>-6%</b>	<b>-7</b>
<b>Property</b>	<b>353</b>	<b>372</b>	<b>5%</b>	<b>19</b>

# SECTOR 3

## CRIME DATA

	2004	2005	2006	2007	2008	Total
Homicide	0	1	0	0	1	2
Rape	14	6	16	6	7	49
Robbery	33	23	30	42	34	162
Agg. Assault	64	80	77	81	88	390
Burglary	63	46	69	88	76	342
Larceny	175	159	191	176	215	916
MV Theft	80	72	81	53	60	346
<b>Violent</b>	<b>111</b>	<b>110</b>	<b>123</b>	<b>129</b>	<b>130</b>	<b>603</b>
<b>Property</b>	<b>318</b>	<b>277</b>	<b>341</b>	<b>317</b>	<b>351</b>	<b>1,604</b>
<b>Total</b>	<b>429</b>	<b>387</b>	<b>464</b>	<b>446</b>	<b>481</b>	<b>2,207</b>

		2007	2008	% Chg	Net Chg.
Homicide		0	1	100%	1
Rape		6	7	17%	1
Robbery		42	34	-19%	-8
Agg. Assault		81	88	9%	7
Burglary		88	76	-14%	-12
Larceny		176	215	22%	39
MV Theft		53	60	13%	7
<b>Violent</b>		<b>129</b>	<b>130</b>	<b>1%</b>	<b>1</b>
<b>Property</b>		<b>317</b>	<b>351</b>	<b>11%</b>	<b>34</b>

# SECTOR 4

## CRIME DATA

	2004	2005	2006	2007	2008	Total
Homicide	1	3	0	2	2	8
Rape	40	42	33	53	30	198
Robbery	120	102	110	138	155	625
Agg. Assault	262	310	306	248	325	1,451
Burglary	157	136	176	184	222	875
Larceny	389	437	451	444	602	2,323
MV Theft	190	150	146	96	122	704
<b>Violent</b>	<b>423</b>	<b>457</b>	<b>449</b>	<b>441</b>	<b>512</b>	<b>2,282</b>
<b>Property</b>	<b>736</b>	<b>723</b>	<b>773</b>	<b>724</b>	<b>946</b>	<b>3,902</b>
<b>Total</b>	<b>1,159</b>	<b>1,180</b>	<b>1,222</b>	<b>1,165</b>	<b>1,458</b>	<b>6,184</b>

	2007	2008	% Chg	Net Chg.
Homicide	2	2	0%	0
Rape	53	30	-43%	-23
Robbery	138	155	12%	17
Agg. Assault	248	325	31%	77
Burglary	184	222	21%	38
Larceny	444	602	36%	158
MV Theft	96	122	27%	26
<b>Violent</b>	<b>441</b>	<b>512</b>	<b>16%</b>	<b>71</b>
<b>Property</b>	<b>724</b>	<b>946</b>	<b>31%</b>	<b>222</b>

# CITY WIDE CRIME DATA

	2004	2005	2006	2007	2008
Total Arrests	1,587	1,931	1,978	1,938	2,247
Protective Custodys	296	491	507	470	435
Total Summons	158	280	287	349	492

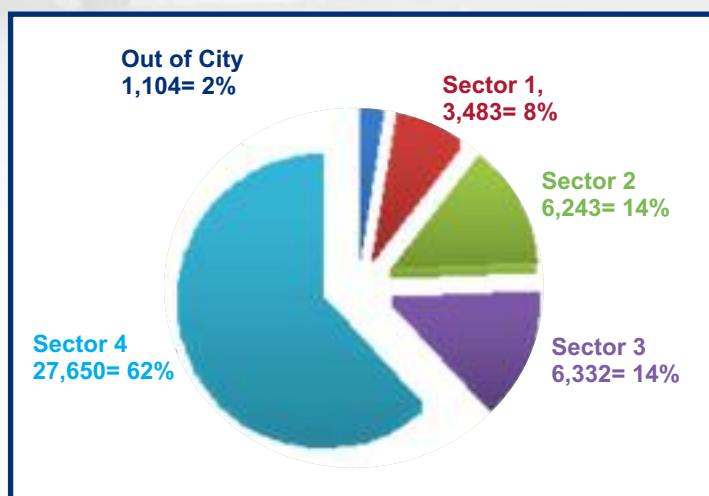
		2007	2008	% Chg	Net Chg.
Total Arrests		1,938	2,247	16%	309
Protective Custodys		470	435	-7%	-35
Total Summons		349	492	41%	143



# CITY WIDE CALLS FOR SERVICE

	2004	2005	2006	2007	2008	Total
Out of City	1,464	969	1,094	1,041	1,104	5,672
Sector 1	2,531	3,122	3,258	3,290	3,483	15,684
Sector 2	4,690	5,156	5,679	5,691	6,243	27,459
Sector 3	5,301	5,413	5,379	5,645	6,332	28,070
Sector 4	20,952	23,714	24,834	25,626	27,650	122,776
<b>Total</b>	<b>34,938</b>	<b>38,374</b>	<b>40,244</b>	<b>41,293</b>	<b>44,812</b>	<b>199,661</b>

		2007	2008	% Chg	Net Chg.
Out of City		1,041	1,104	6%	63
Sector 1		3,290	3,483	6%	193
Sector 2		5,691	6,243	10%	552
Sector 3		5,645	6,332	12%	687
Sector 4		25,626	27,650	8%	2,024





## The Chelsea Police Annual Report 2008

**The Chelsea Police Department  
19 Park Street  
Chelsea, Massachusetts 02150  
617.466.4800**

