



Community Advisory Committee Meeting #1

City of Chelsea

September 29, 2021



Health Resources in Action
Advancing Public Health and Medical Research

Group Agreements

Be present and engaged

One mic

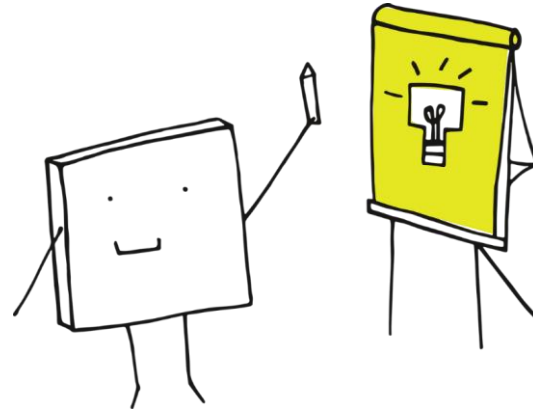
Listen to understand

Step up, step back

Take care of yourselves

Be flexible

Confidentiality



Introductions

Please share:

- Your name
- How you are connected to Chelsea
- Where were your grandparents were born



Agenda

- Welcome
- What is ARPA?
- The Community Advisory Committee
- The Process
 - Break
- Initial information
- Your Role
- Next Steps
- Close



What is ARPA?

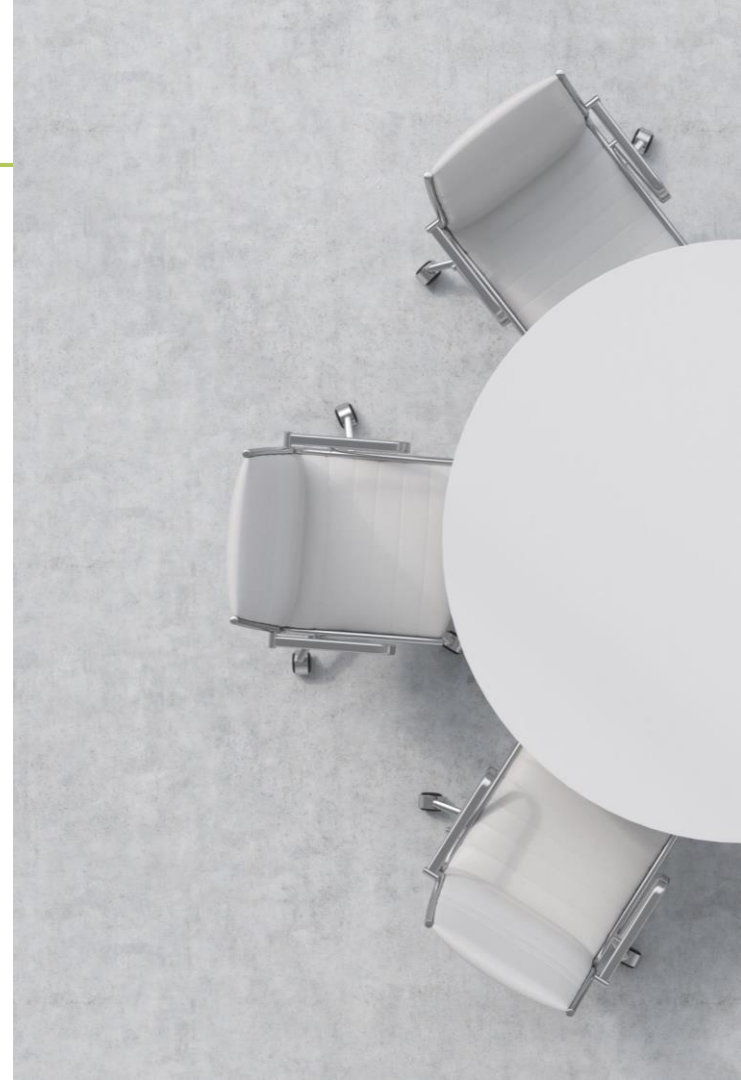
The \$1.9 trillion American Rescue Plan Act (ARPA) seeks to help the country recover from the devastating impacts of the pandemic, providing emergency funding for state, local, territorial, and tribal governments.

The City of Chelsea is expected to receive a total of approximately \$40 million, and \$15 million of these funds will be dedicated to community initiatives prioritized during a community decision-making process.



Community Advisory Committee

The City of Chelsea established an **ARPA Community Advisory Committee** made up of community stakeholders and residents to ensure the equitable, transparent, and accountable distribution of ARPA funds.



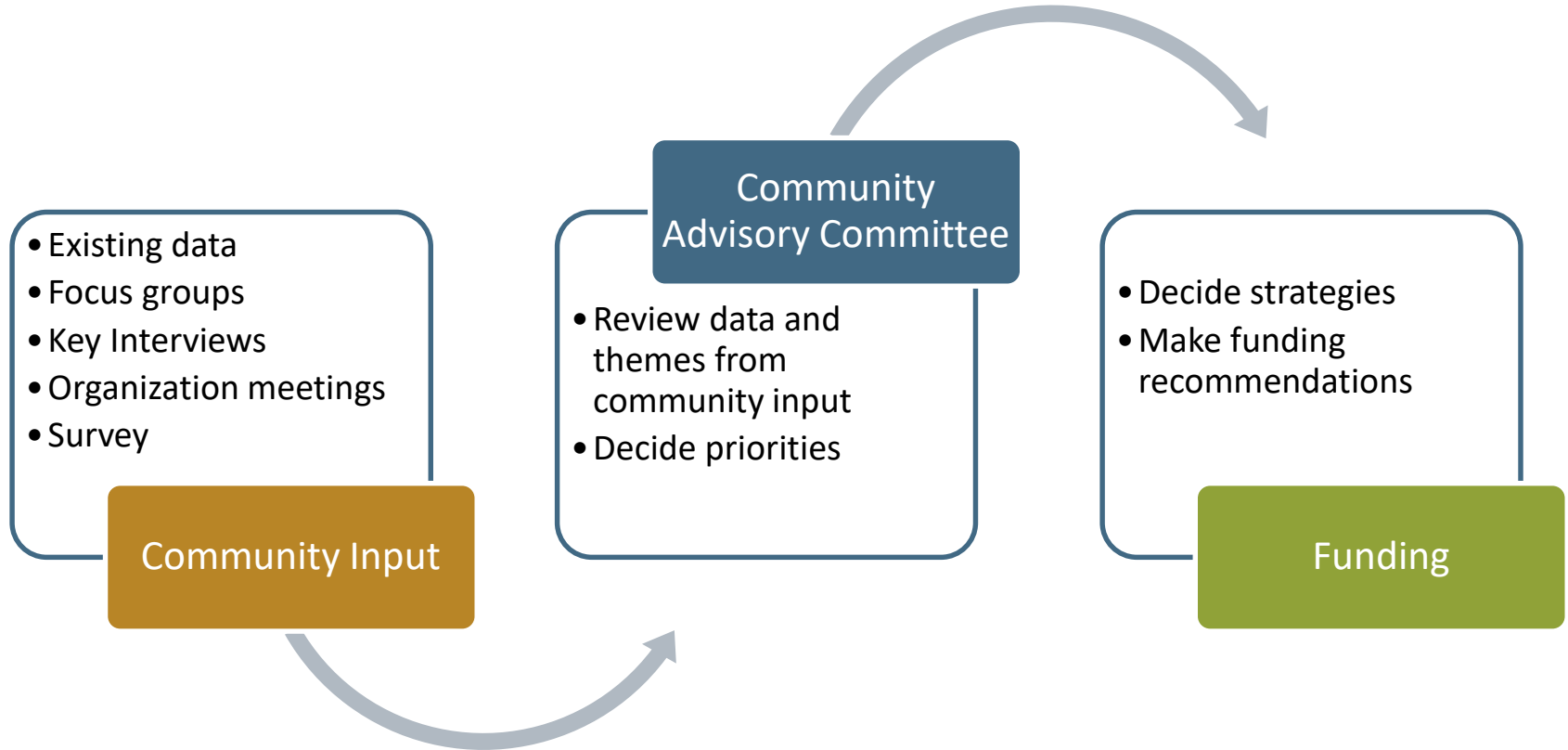
Community Fund Allocation

This \$15 million will be dedicated toward initiatives and priorities developed by the community following a robust community engagement effort. This effort will identify the City's most urgent needs in areas such as:

- Housing (prioritizing eviction prevention, anti-displacement, and minority homeownership initiatives)
- Food Security
- Workforce Development (prioritizing digital access and child care and early childhood education initiatives)
- Entrepreneurship and Small Business Development
- Environmental Health & Open Space
- Behavioral & Mental Health



The Process



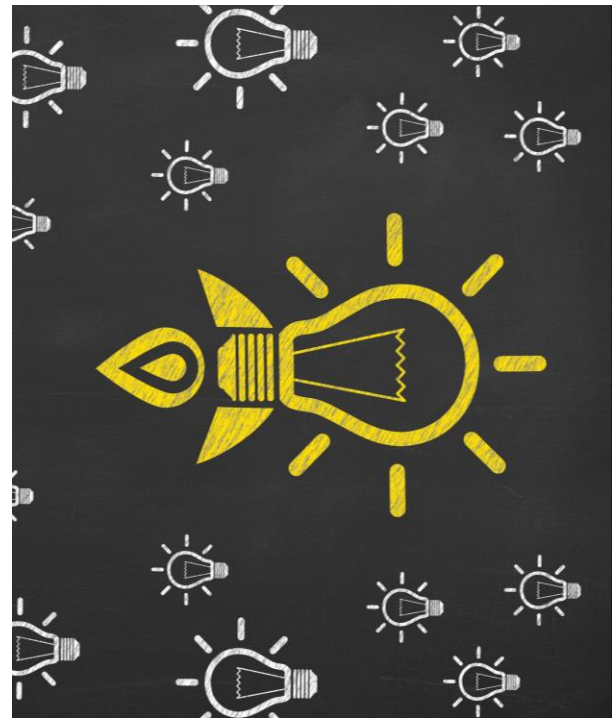
The Community Advisory Committee Process



Topic Meetings

At each
topical
meeting,
the CAC
will:

- Review data
- Examine themes from focus groups, interviews and CBO meetings
- Gather and define priorities
- Initial refining of priorities



The Community Advisory Committee Process (cont.)



Meeting #5 – Refine Priorities, Develop Strategies

Meeting #6 – Finalize Strategies

Meeting #7 – Final Allocation Plan



Other Activities

- Chelsea City Council
- Public Meeting in Spanish (English translation)
- Social media



BREAK



WHO IS CHELSEA?



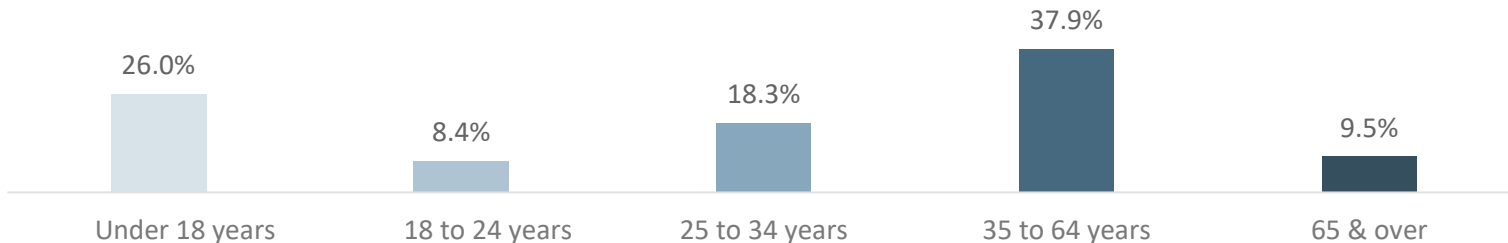
Who is Chelsea?

Chelsea experienced more growth in population size over the last decade than the state overall

- Chelsea's population increased 15.9% from 2010 - 2020, compared to 7.4% in MA

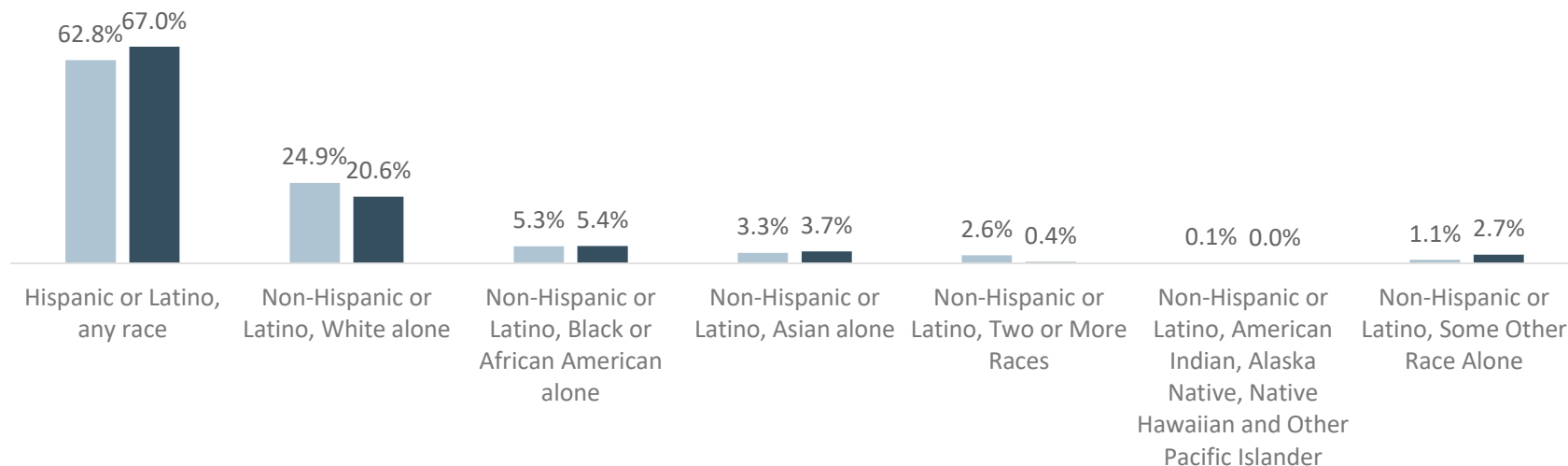
Chelsea's population is relatively young

- Approximately 1 in 4 residents was under 18 in 2019



Who is Chelsea?

Two-thirds of Chelsea residents identify as Hispanic or Latino



Who is Chelsea?

Slightly more than 2 in 5 Chelsea residents (45.4%) were born outside of the United States

- Three-times higher than the foreign-born population in MA overall (16.8%)

More than two-thirds of Chelsea residents (69.8%) speak a language other English

- Of those residents, more than half (56.2%) speak English “less than very well” (i.e., limited English proficiency)
- More than half of Spanish speakers in Chelsea (57.3%) have limited English proficiency



Who is Chelsea?

- The median household income in Chelsea was \$49,164 overall, \$46,000 for Black residents, and \$50,298 for Latino residents
- 19% of Chelsea residents fall below the FPL
- 29% of Chelsea residents over the age of 25 are not high school graduates
- Over a third of recent high graduates intended on continuing education at a 2-Year Public College



Impact of COVID-19

Chelsea has been hard hit by COVID-19 and, while the community case rate has improved, impacts have been broad

- More than half of Chelsea respondents reported being worried about paying for 1 or more type of bill or expense
- 2 in 5 respondents that currently used substances reported an increase in substance use since the start of the pandemic

A survey of La Colaborativa clients, who predominantly identified as Hispanic or Latino, found that 3 in 4 respondents experienced impacts to their employment



**What is our
favorite thing
about
Chelsea?**



Health and Social Priorities in Chelsea



Small Business and Workforce Development

- Unemployment in Chelsea increased from 2.9% to 12.0% between Dec. 2019 – Dec. 2020; Leveled out to 6.5% in August 2021
- Chelsea lost approximately one-third of licensed childcare providers since the start of the COVID-19 pandemic
- Chelsea businesses lost ~ 3,000 jobs between February and April 2020 due to the COVID-19 pandemic



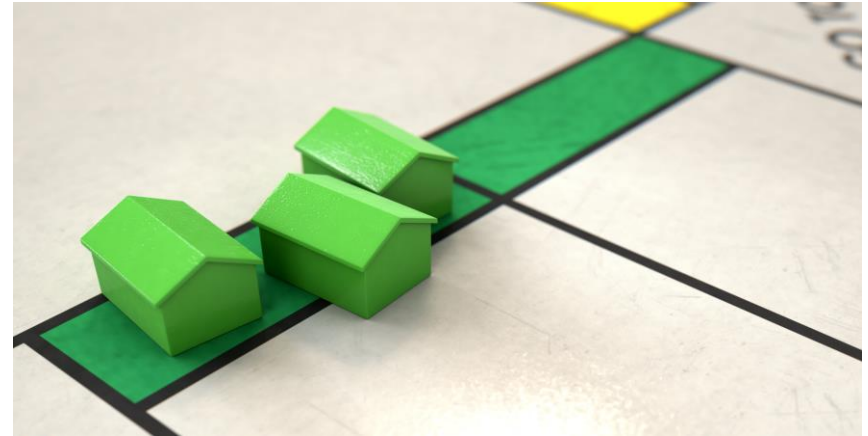
Health and Social Priorities in Chelsea

Housing

- Nearly half of all households in Chelsea identified as cost-burdened, paying 30-50% of their monthly income on housing
- Between Jan. – Aug. 2021, ~\$4.2 mil of RAFT/ERMA/ERAP funds were distributed to Chelsea residents

Food Security

- A study of Chelsea Eats applicants found that approximately half of respondents “sometimes” or “often” did not have enough to eat
- Approximately 2 in 5 eligible residents are not enrolled in SNAP/food assistance programs



Data Sources: North Suffolk Public Health Collaborative, North Suffolk Community Health Needs Assessment, 2019; Rappaport Institute for Greater Boston, Chelsea Eats Baseline Survey 2020; City of Chelsea, Chelsea Food Needs Assessment, 2020



Health and Social Priorities in Ch

Mental and Behavioral Health

- Prior to COVID, 41% of Chelsea residents selected mental health as a top health concern
- 38% of Chelsea high school students reported feeling sad or hopeless for two weeks, which is 11% above the statewide average for MA high school students
- Mental health hospital admissions in Chelsea are nearly 1.5x greater than the state average



YOUR ROLE



REVIEW
INFORMATION



ASK QUESTIONS



BRING YOUR
EXPERIENCE



ALL OF CHELSEA



DEFINE PRIORITIES



DEVELOP STRATEGIES



MAKE
RECOMMENDATIONS

