



City of Chelsea Capital Improvement Plan

FY 2022 – 2026
Thomas G. Ambrosino
City Manager



CITY OF CHELSEA, MA
Office of the City Manager

City Hall, 500 Broadway, Room 302 · Chelsea, MA 02150
Phone: 617.466.4100 · Fax: 617.466.4175 · Email: tambrosino@chelseama.gov

Thomas G. Ambrosino
City Manager

January 29, 2021

The Honorable Chelsea City Council
Chelsea City Hall
500 Broadway
Chelsea, Massachusetts 02150

Re: *Capital Improvement Plan FY22-FY26*

Dear Councilors:

Pursuant to my obligations under Section 5-4 of the Chelsea City Charter, I hereby submit to you my proposed Capital Improvement Plan for Fiscal Years 2022-2026.

The enclosed Capital Improvement Plan continues the City's commitment to utilize our reserves and fiscal strength for the purpose of enhancing the quality of life in our City. The proposed total investment for FY22 is in excess of \$14 million. This is similar to our post-pandemic level of investment in FY21. The list of projects includes roadway repair, school building maintenance, major underground utility work and open space improvements.

I recognize that our response to COVID-19 has required the City to expend significant capital, and therefore our reserves are lower than they have been in several years. Nonetheless, I feel it is critical for the City to continue to invest long-term in capital projects that improve the City, even as we seek to rebuild our Rainy Day funds.

In accordance with the Charter requirements, I ask that the City Council move this Capital Improvement Plan to a public hearing. Following that hearing and the Council's final determination on this Plan, I will prepare a recommended Order for implementation of the FY22 proposals.

I look forward to working together with you to accomplish the goals of this newest Plan.

Sincerely,

Thomas G. Ambrosino
City Manager

Attachment

Cc: Deputy City Manager Ned Keefe

Table of Contents

Transmittal Letter from the City Manager

Executive Summarypg. 4

FY2022 Program Areas.....pg. 5

Capital Plan Contributorspg. 7

Capital Plan Overview.....pg. 8

What is a Capital Improvement.....pg. 9

What are the Benefits of a CIP.....pg. 10

How are Capital Improvements Funded.....pg. 11

Capital Projects Program Areas

Equipment Acquisition.....pg. 13

Parks and Open Space.....pg. 14

Public Buildings and Facilities.....pg. 15

Public Safety.....pg. 16

Surface Enhancements.....pg. 17

Utility Enhancements.....pg. 18

Capital Projects Description and Tables

Project Descriptions Sheets.....pg. 19

Fy22 Projects by Program Area.....pg. 64

CIP Expenditures by Program Areapg. 66

CIP Revenue Source Detail by Year.....pg. 67

Fy2023 Proposed Projects.....pg. 68

Fy2024 Proposed Projects.....pg. 70

Fy2025 Proposed Projects.....pg. 71

Fy2026 Proposed Projects.....pg. 72





Executive Summary

Chelsea's five-year Capital Improvement Program (CIP) is the City's 23rd consecutive capital planning document. Keeping with the City Charter, this FY 2022-2026 CIP adheres to the same planning framework as was employed in past documents. While the basic planning framework remains consistent, the spirit of CIP planning will typically involve refinements from year to year in response to the local budget and the status of a vast array of local capital needs. Management's increased attention to balancing project planning with fiscal planning will render deliverables of a higher quality within a fiscal plan to support future CIP fiscal planning initiatives. The CIP is not a static process. The creation of this CIP is based on the best available information at the time of

development. However, circumstances during the budget year and out years do change, which may then require a change in the plan.

The CIP is a multi-year, fiscal planning document that identifies long-term improvements to the City's infrastructure and facilities, and provides a program for prioritizing, scheduling and funding. It is comprised of a capital budget, which is the upcoming fiscal year's plan and a capital program, which is an outline for capital expenditures for the four years beyond the capital budget. The CIP is prepared in conformance with the City's Charter and Administrative Code, under the City Manager/City Council form of government. It is divided into six "Program Areas":

Executive Summary – FY2022 Program Areas



Equipment Acquisition

will total **\$796,000**. Equipment purchases maintain our annual critical investment including desktop replacements, vehicles and furniture for our public library, among other items.



Public Buildings and Facilities

will total **\$3,800,000** to complete major renovation in our public buildings, Williams School and Mary C. Burke complex.



Surface Enhancements

will total **\$2,676,000** to replace roadways and sidewalks and to undertake a complete streets and transportation improvements master plan program.



Parks and Open Space

will receive a commitment of **\$1,650,000** to improve and/or expand the City's open space resources, including historical staircase rehabilitations.



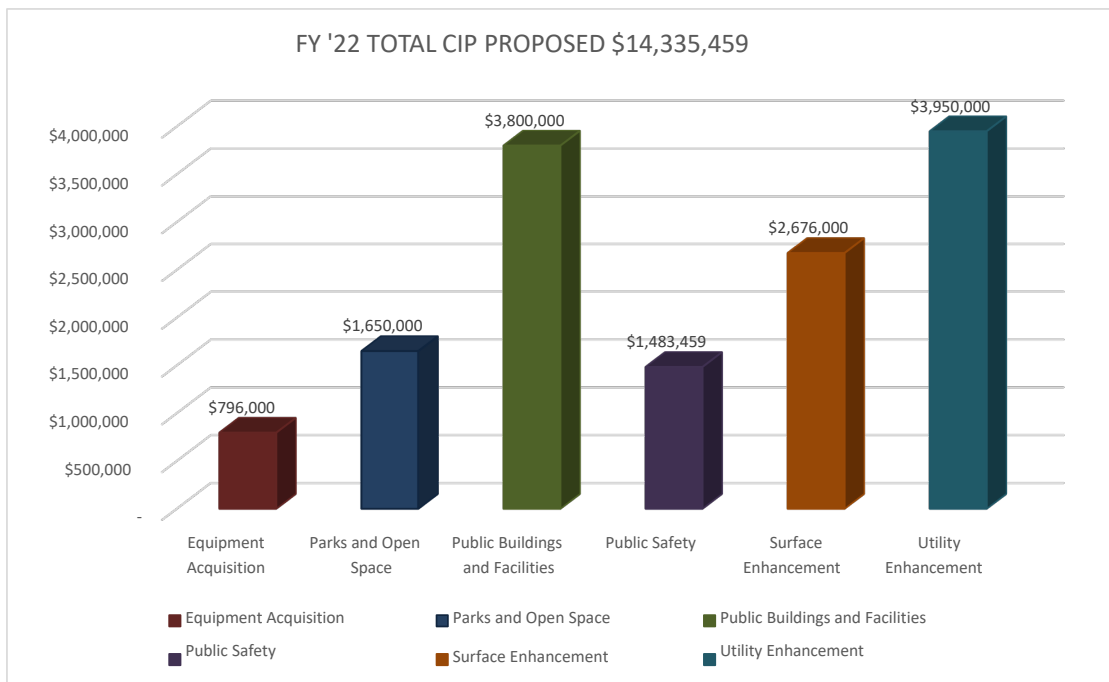
Public Safety

will total **\$1,483,459** to replace police cruisers, traffic signalization improvements, surveillance cameras among others.



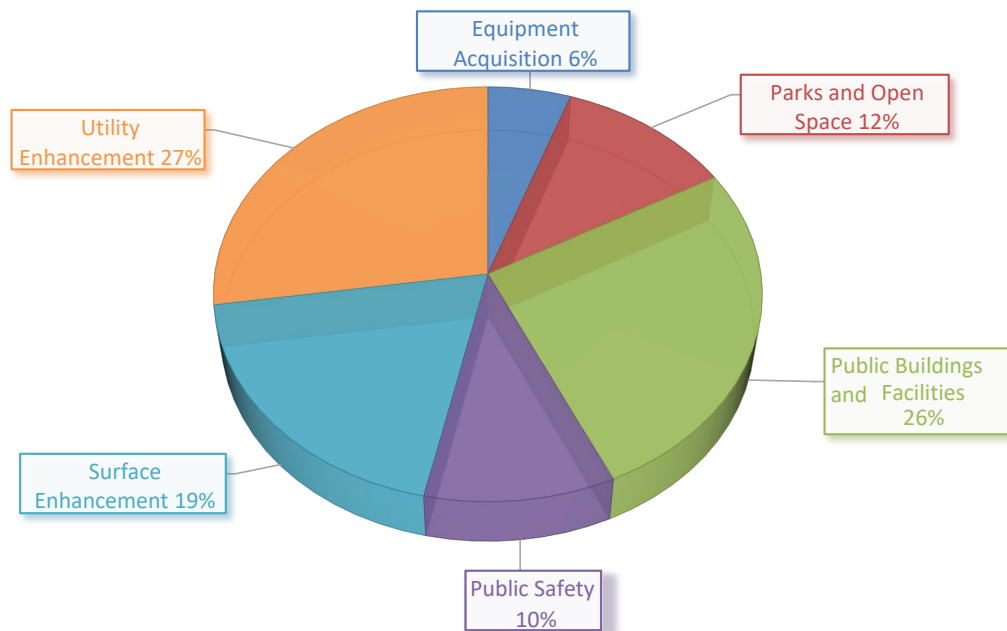
Utility Enhancements

projects will total **\$3,950,000** for important investments in our infrastructure, including utility replacement on Willow Street and Central Ave.

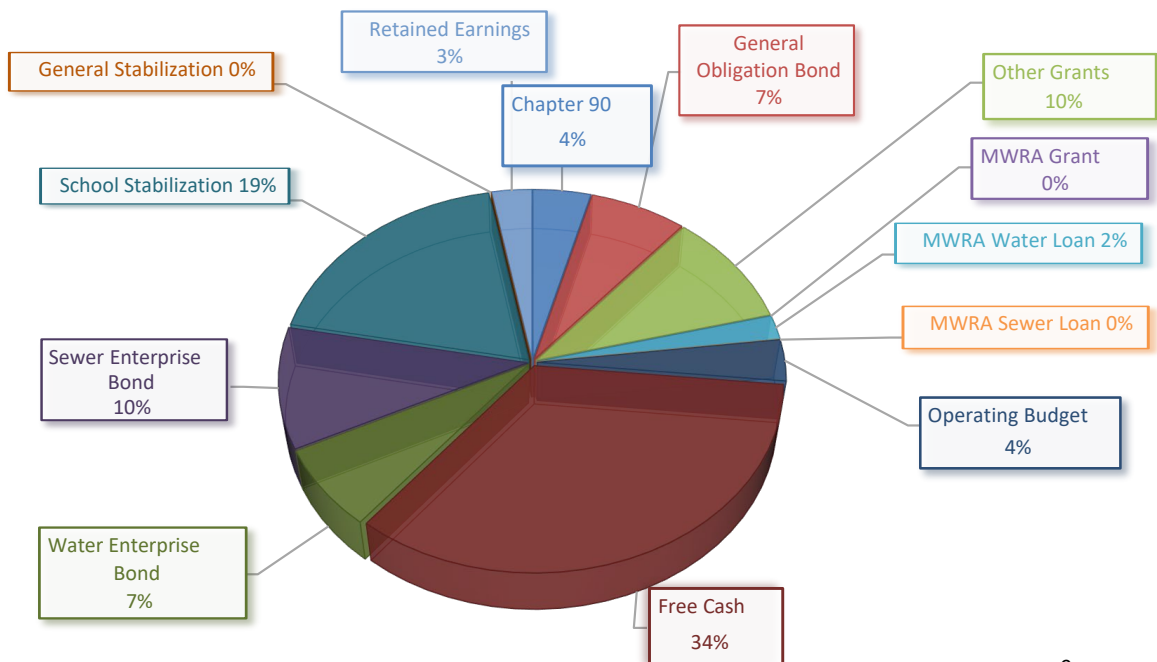


Executive Summary – FY2022 Program Areas

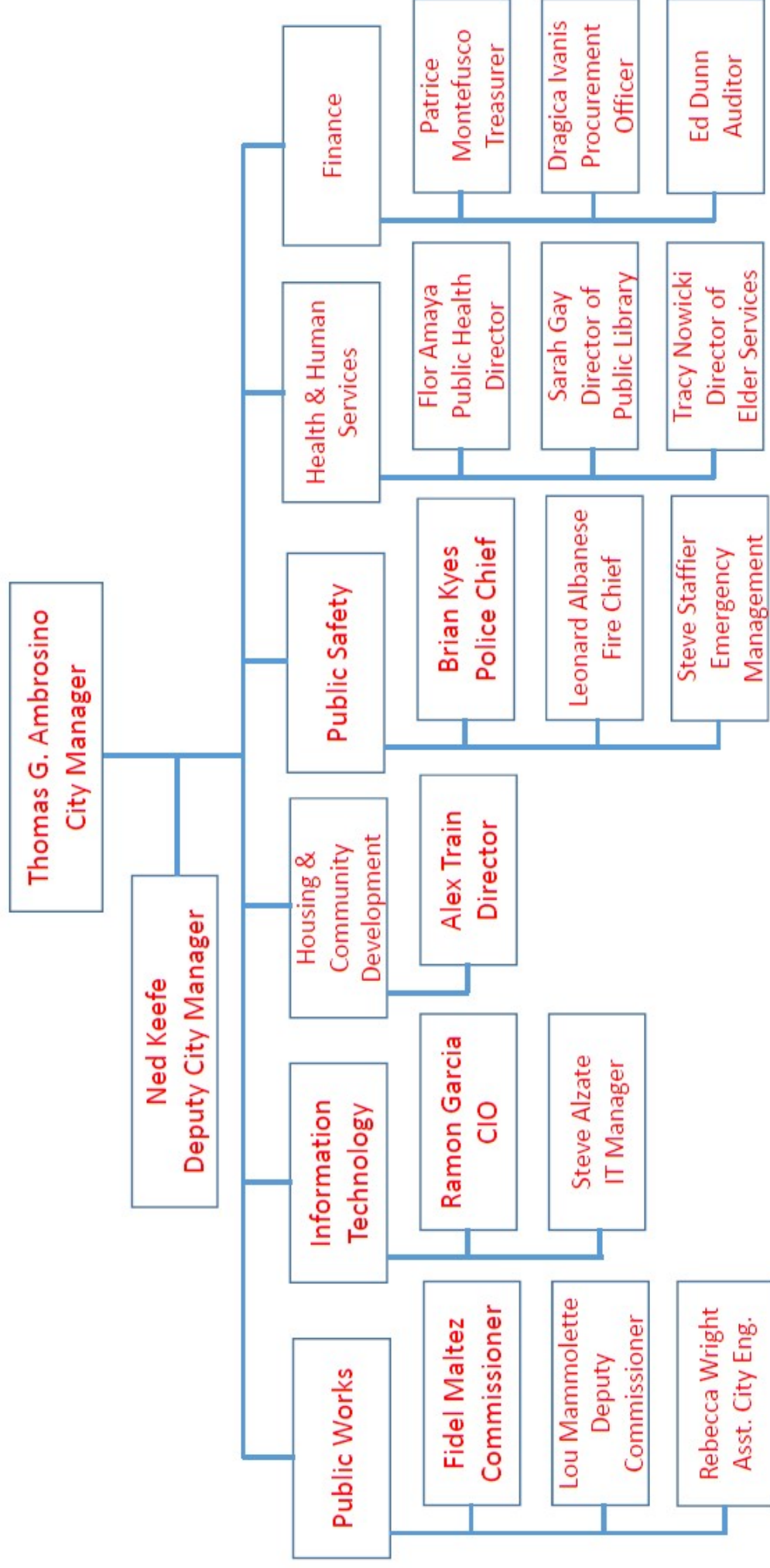
FY '22 EXPENDITURES BY PROGRAM AREA



FY '22 FUNDING SOURCES



Capital Improvement Plan Contributors





Capital Improvement Plan Overview

In a similar process as has been undertaken for the last twenty three years and as required by the City Charter and Administrative Code, the City of Chelsea will compile a five-year Capital Improvement Program (the “CIP”), the FY 2022-2026 (July 1, 2021 - June 30, 2026) CIP which includes the FY22 Capital Budget (July 1, 2021 - June 30, 2022). A Capital Improvement Program (CIP) is a fiscal planning tool that documents the City’s capital asset needs, ranks the needs in order of project priority, and schedules projects for funding and implementation. The CIP is a dynamic process that provides the opportunity for the City to plan for major expenditures in the future and to evaluate new proposals based on more current data.

The CIP lists each proposed project to be undertaken in the next fiscal year, the project description, justification, impact, the amount expected to be expended and the proposed method of financing. In addition, the CIP provides a tentative project listing by category and financing source for years two through five as a strategic planning and budgeting tool. Based on this information, summaries of planned capital activity, and their funding requirements, for each of the five years are prepared and presented. The CIP is a composite of the City's infrastructure needs, tempered by current and future financial planning and capacity.

What is a Capital Improvement?

A capital improvement is generally considered a major, non-routine expenditure for new construction, major equipment purchase or improvements to existing buildings, facilities, land or infrastructure, with an estimated useful life of eight (8) years or more and in most cases a cost of \$10,000 or more.

Among the items properly classified as capital improvements are:

- ✓ New public buildings, or additions to existing buildings, including land acquisition costs and equipment needed to furnish the new building or addition for the first time
- ✓ Major alterations, renovations or improvements to existing buildings which extend the useful life of the existing buildings by ten (10) years
- ✓ Land acquisition and/or improvement, unrelated to a public building, but necessary for conservation or parks and recreation purposes
- ✓ Major equipment acquisition, replacement or refurbishment, with a cost of at least \$10,000 and a useful life of at least thirteen (13) years, including data processing equipment
- ✓ A feasibility study or engineering design services which are related to a future capital improvement.
- ✓ New construction or major improvements to the City's physical infrastructure, including streets, sidewalks, storm water drains, the water distribution system and the sanitary sewer system, which extend the useful life of the infrastructure by at least ten (10) years



What are the benefits of a Capital Improvement Plan?

Adherence to capital improvement programming allows the City to:

- ✓ Facilitate coordination between capital needs and the operating budgets
- ✓ Enhance the community's credit rating through improved fiscal planning and avoidance of sudden changes in debt service requirements
- ✓ Identify the most economical means of financing capital projects
- ✓ Increase opportunities for obtaining federal and state aid
- ✓ Relate public facilities to the City's strategic plan or public and private development and redevelopment policies and plans
- ✓ Focus attention on community objectives and fiscal capacity
- ✓ Keep the public informed about future needs and projects
- ✓ Coordinate the activities of neighboring and overlapping units of local government to reduce duplication, and encourage careful project planning and design to avoid costly mistakes and to reach desired goals.



How are Capital Improvements Funded?

Operating Budget and Free Cash. Operating Budget or “Pay-As-You-Go” is funding through the operating budget on a “capital” general ledger line. Projects funded through those line items are generally for acquisitions of a shorter useful life or lower cost than those that would qualify as capital items by the policies of the CIP. Free cash is generally used for one-time purchases and to positively impact out-year budgets by reducing borrowing and associated costs.

General Obligation (GO) bonds are general obligations of the City. The source of repayment is not limited to any particular fund or revenue stream. GO bond proceeds may be used for a wide range of capital activities. However, the term of the bond must be tied to the life of improvement. For example, a roadway may be financed with a twenty-year bond, and most vehicle purchases are financed with a five- to ten-year bond.



How are Capital Improvements Funded?

Water Bonds, Sewer Bonds, MWRA Water Loan and MWRA Sewer Loan are obligations funded from the Water and Sewer Enterprise Fund. The principle of enterprise fund accounting is that all costs of providing services to the public, including depreciation, be financed or recovered through user charges. The City's cost recovery and financing system for the operations and maintenance of the water and sewer systems is based upon this principle. Water and sewer revenue may only pay for water and sewer expenses. Like the overall General Fund budget of the City, the Water and Sewer Enterprise Fund may finance planned capital improvements from current "rate revenue" or from long-term bonds, which must be repaid over time using future rate revenue.

Miscellaneous Grants are funding sources from State, Federal or other entities that do not require repayment from the City. Examples of these grants are from Community Development Block Grant Program (CDBG), Mass Parkland Acquisitions and Renovations for Communities (PARC) program, Massachusetts Highway Department Chapter 90 program, among others. These grants at times require a minimum contribution or match of municipal funds that is generally funded from Free Cash.

School Stabilization was listed separately starting in FY19 and includes all projects related to school buildings or playgrounds.



Overview of Equipment Acquisition Projects

Equipment Acquisition involves the purchase of items necessary to properly outfit staff and allow for desired municipal functions to be performed. Through this program area, the City seeks to ensure that equipment is updated or newly acquired to meet the current and projected future demands of various departments and those they serve. This program area typically facilitates purchases to support the Public Works and Information Technology Departments, although the requirements of all non-public safety departments (public safety has its own program area) are also addressed annually.

In FY2022, we are requesting a total of \$796,000 for various purchases. The funding for these purchases are for \$287,500 from operational budget or “pay-as-you-go” items that are included in the capital general ledger for each respective department, \$413,500 funded from retained earnings on the Water & Sewer enterprise fund, and \$95,000 funded from Free Cash. Requested projects include replacement of two DPW vehicles and one parking services vehicle. This includes the purchase of Ford Transit small vans that provide flexibility and ease of travel for DPW and parking. We are also requesting \$300,000 to continue the replacement of municipal water meters, which began in earnest two years ago, but was heavily impacted by the COVID-19 pandemic. Other projects include our annual upgrading of IT equipment including desktops. Each project has an individual description and sheet in the project section.



Overview of Park and Open Space Projects

The City continues its partnership with the State, community based non-profits, open space advocates and private recreation leagues to serve local residents by expanding and enhancing recreation and education opportunities. Annually, the City has sought funding through the Executive Office of Energy and Environmental Affairs' Parkland Acquisition and Renovation for Communities (PARC) Grant Program, which provides the City with up to \$400,000 annually for parkland acquisition and construction. This program has provided project funds for the renovation of Voke Park.

In FY2022, we are requesting a total of \$1,650,000 for various purchases. The funding for these purchases are: \$1,010,000 from Free Cash; \$400,000 from the PARC grant, and \$240,000 from miscellaneous grants. This funding will complete the renovation of Mace Tot Lot, a small park that is heavily used by residents. This funding will also include phase 3 of funding for the 6 year comprehensive plan developed for the Garden Cemetery. Funding requests also seeks to complete the design process to rehabilitate three staircases adjacent to Powderhorn Hill and Upper Broadway. Finally, funding requests a planning study to be performed on Mill Creek. This study will lead to supporting long range planning efforts to restore, and generally address water quality the issues the creek faces today.



Photo Credit Mimi Graney

Overview of Public Buildings and Facilities Projects

Public buildings and facilities play an essential role in the delivery of municipal services and act as physical symbols of the community at large. Improvements in our buildings completed through capital projects enhance the City's service delivery capability, and aid in avoiding costly and, perhaps, emergency work on buildings in the future. The City's intention has been to be thoughtful and effective in promoting a program which considers life-cycle maintenance and repair of City buildings, much the way life-cycle maintenance and replacement of vehicles currently takes place.

In FY2022, we are requesting a total of \$3,800,000 for various projects in our public buildings and schools. The funding for these purchases are divided in the following way: \$1,050,000 from Free Cash; and \$2,750,000 from School Stabilization. As was proposed in FY21's CIP, we are requesting significant funding to continue renovating our public buildings. One major project is the renovation of the Department of Public Works City Yard, with a total of \$500,000 proposed for the replacement of the existing leaky roof. In the schools, repairs to the roof and envelop of the Chelsea High School and Mary C. Burk complex are planned. Finally, for \$1,500,000 we will replace the rooftop HVAC units to the Early Learning Center.



Overview of Public Safety Projects

Continued public safety improvements are an essential element of improving personal safety and quality of life of our visitors and residents. Public safety serves the city twenty-four hours a day, seven days a week. Police, Fire and Emergency Management personnel provide the most essential services of the City; protecting the lives and property of the city's residents and businesses.

In FY2022, we are requesting a total of \$1,483,459 for various projects in our public safety program area. The funding for these purchases are divided in the following way: \$1,433,459 from Free Cash, and \$50,000 from miscellaneous grants. The projects funded from this program area include a large investment in our radio infrastructure that is used by police, fire and 911. Radio is the primary way to communicate in public safety. Any down time of the radio equipment can be catastrophic and could result in significant liability for the City.

Funding is proposed for the Island End River Barrier Permitting. This project will address coastal flooding, improve park accessibility and placemaking, enhance the natural shoreline, and provide equitable waterfront access.

Finally, this program area includes the continuation of traffic signalization upgrades. The upgrading of various street signals to "Smart" traffic lights has a significant positive impact on both motor vehicles as well as pedestrians. These new smart traffic lights include real-time monitoring of traffic and artificial intelligence to maximize traffic flow; they also serve as an important tool to calculate traffic flow and provide significant data for various City departments.



Overview of Surface Enhancements Projects

Surface enhancement projects continue to be a large focus of our Public Works and Housing and Community Development Departments. Chelsea roadways are subject to high levels of vehicular traffic due to the city's close proximity to the city of Boston and regional transportation facilities for the movement of people and materials. The measure of the need for citywide roadway resurfacing and reconstruction is the poor ride quality of the deteriorated roadway pavements on several streets. While much has been accomplished in the last few years, much more needs to be done. In addition, the City must expeditiously meet full compliance with the Americans with Disabilities Act (ADA) on our sidewalks.

In FY2022, we are requesting a total of \$2,676,000 for various projects in our surface enhancement program area. The funding for these purchases are divided in the following way: \$1,340,000 from Free Cash; \$740,000 from miscellaneous grants; and \$596,000 from Chapter 90. The projects funded from this program area include our annual replacement of sidewalks citywide as well as repaving of various streets that are in poor conditions. Streets to be completed in FY2022 include Winnisimmet, Cherry, Washburn and School Street amongst others. This program area also includes sidewalk replacement on Marlborough Street, Prospect and Lambert Avenue. Finally, the Housing & Community Development Department will continue taking advantage of the "Complete Streets" master plan to secure significant funding from MassDOT to make improvements in our community. Complete Streets include projects to rebuild roadway and sidewalks with bike lanes, intersection modifications to improve pedestrian safety, and/or recreational multi-use paths.



Photo Credit Matt Frank

Overview of Utility Enhancements Projects

Infrastructure improvements to our water, sewer and drain systems are critical to support the quality of life expectations from our residents and the significant development seen in recent years in Chelsea. Improvements to the City's water distribution and sewer collection system continue to be made every year through the capital plan. In recent years, the City has made substantial progress in addressing a long list of capital improvement needs and priorities. The City continues to reduce the number of storm sewers that are directly connected to the sanitary sewer system, typically called "combined sewers". Separating storm water from sanitary flows is good for the environment and saves ratepayers money in the long run.

In FY2022, we are requesting a total of \$3,950,000 for various projects in our utility enhancement program area. The funding for these purchases are divided in the following way: \$150,000 from operational budget or "pay-as-you-go"; \$1,00,000 from General Obligation Bonds; \$1,000,000 from Water Bonds; \$300,000 from MWRA water loan; and \$1,000,000 from Sewer Bonds. The projects funded from this program includes a continuation of our lead service replacement program that will allow DPW to replace private lead services at no cost to the homeowners. This replacement will have lasting health benefits and will greatly improve quality of life for our residents. In addition, this program includes water, sewer, drain, road and sidewalk upgrades to the Central Ave and Willow Street corridors. This project will revitalize the neighborhood. Finally, this program area includes funding a continuation of our storm water management, which is a strong requirement from the EPA and MassDEP.

Architectural Assessment Services

Public Buildings and Facilities

Project Year 2022



KEY PLAN - SECOND FLOOR CHELSEA CITY HALL

ADMINISTRATION CONTACT

Fidel Maltez

DPW Commissioner

500 Broadway

617-466-4200

fmaltez@chelseama.gov

Description

This project will hire an architectural consultant to do an assessment in various city facilities in order to investigate potential redesign of spaces to enhance efficiency of operation and an upgraded level of customer satisfaction. This includes the investigation of internal and external upgrades in any public building. This includes the design or investigation to upgrade alarm systems, roofs, electrical systems or mechanical systems in public buildings.

Justification

Most city building are very old and office spaces need to be redesigned to support current operations. In addition, several of our buildings are in disrepair and require an architectural study to develop a sustainable solution to infrastructure problems. Finally, this funding could be used to perform feasibility studies for the replacement of our public works yard.

Impact

Existing city staff can work more efficiently and effectively, thereby enhancing customer service. This will also take care of needed repairs in public buildings to ensure their long life and structural stability is not compromised.

Operating Budget

\$0

Free Cash

\$50,000

GO Bonds

\$0

Chapter 90

\$0

Other Grants

\$0

School Stabilization

\$0

MWRA Grants

\$0

MWRA Sewer Loans

\$0

MWRA Water Loans

\$0

Water Bonds

\$0

Sewer Bonds

\$0

Total Cost

\$50,000

Public Building Renovations

Public Buildings and Facilities

Project Year 2022



ADMINISTRATION CONTACT

Fidel Maltez

DPW Commissioner

500 Broadway

617-466-4200

fmaltez@chelseama.gov

Description

This project will include the design, construction and purchasing furniture for all public buildings. This project will also consist of internal and external repairs and renovations of offices and buildings such as city hall, central fire, public library, senior center, central police station and fire stations. These funds will also cover the purchase of furniture required for these offices/buildings. These funds will also cover any assessments required to evaluate the existing condition.

Justification

Many of our public buildings, including offices in City Hall, central fire, public library, senior center, central police station and fire stations, are in poor condition, are outdated and need major repairs/renovations that cannot be completed with our departmental budget. This funding will cover repairs/renovations needed on public buildings that are internal and external and will bring our public buildings to good operating condition.

Impact

Improve our working environment for residents, visitors and employees in public buildings throughout Chelsea.

Operating Budget

\$0

Free Cash

\$500,000

GO Bonds

\$0

Chapter 90

\$0

Other Grants

\$0

School Stabilization

\$0

MWRA Grants

\$0

MWRA Sewer Loans

\$0

MWRA Water Loans

\$0

Water Bonds

\$0

Sewer Bonds

\$0

Total Cost

\$500,000

Renovations to DPW City Yard

ADMINISTRATION CONTACT

Public Buildings and Facilities

Project Year 2022



Fidel Maltez

DPW Commissioner

500 Broadway

617-466-4200

fmaltez@chelseama.gov

Description

A new operation complex to host all DPW operations, vehicle and equipment storage and maintenance functions. Begin by replacing the existing roof. The current roof is aged and has multiple locations of leaks.

Justification

The existing DPW facility is obsolete. A new facility will be designed and engineered to host a modern public works operation. The current roof leaks during rain events, which damages the interior, as well as any equipment or machinery.

Impact

A centralized DPW facility will promote more efficient maintenance and deployment of all assets. Replacing the roof will ensure a safe workplace, no leaks or exposure to the elements. In replacing the exterior, the interior can then be rebuilt, as water damage will be obsolete. The ceiling, walls, flooring, will be free of water damage, mold, and mildew.

Operating Budget

\$0

Free Cash

\$500,000

GO Bonds

\$0

Chapter 90

\$0

Other Grants

\$0

School Stabilization

\$0

MWRA Grants

\$0

MWRA Sewer Loans

\$0

MWRA Water Loans

\$0

Water Bonds

\$0

Sewer Bonds

\$0

Total Cost

\$500,000

Chelsea High Roof and Envelope Repairs

Public Buildings and Facilities

Project Year 2022



ADMINISTRATION CONTACT

Monica Lamboy

Executive Director of
Administration & Finance

500 Broadway, Chelsea MA 02150

617-466-4479

mlamboy@chelseama.gov

Description

Repairing and Resealing at the Chelsea High School, Façade and Envelope to prevent water intrusion.

Justification

The maintenance and up keep of the Chelsea High School is crucial in extending the life and functionality of the building. Keeping moisture out is essential for having no mold or mildew buildup and is essential for preventing damage to the building.

Impact

The health and safety of students and staff will be insured by proactively repairing and enhancing the High School's roof and envelope.

Operating Budget

\$0

Free Cash

\$0

GO Bonds

\$0

Chapter 90

\$0

Other Grants

\$0

School Stabilization

\$750,000

MWRA Grants

\$0

MWRA Sewer Loans

\$0

MWRA Water Loans

\$0

Water Bonds

\$0

Sewer Bonds

\$0

Total Cost

\$750,000

MCB Roof and Envelope Repairs (Phase 3)

Public Buildings and Facilities

Project Year 2022



ADMINISTRATION CONTACT

Monica Lamboy

Executive Director of
Administration & Finance

500 Broadway, Chelsea MA 02150

617-466-4479

mlamboy@chelseama.gov

Description

Repairing Roof and Envelop at MCB

Justification

The current roof was installed back when the school was constructed in 1996. The condition of the roof is allowing leaks to occur in the building which is a potential risk to students and other building occupants.

Impact

The Mary C. Burk Elementary school houses over to 2,000 students and staff. This project supports Chelsea Public Schools' obligation to provide a safe, comfortable and secure learning environment for our school community.

Operating Budget

\$0

Free Cash

\$0

GO Bonds

\$0

Chapter 90

\$0

Other Grants

\$0

School Stabilization

\$500,000

MWRA Grants

\$0

MWRA Sewer Loans

\$0

MWRA Water Loans

\$0

Water Bonds

\$0

Sewer Bonds

\$0

Total Cost

\$500,000

Rooftop HVAC Units - ELC (Phase 1)

Public Buildings and Facilities

Project Year 2022



ADMINISTRATION CONTACT

Monica Lamboy

Executive Director of
Administration & Finance

500 Broadway, Chelsea MA 02150

617-466-4479

mlamboy@chelseama.gov

Description

HVAC units to be replaced.

Justification

The current HVAC units are dated and need to be replaced. A new heating and cooling system will also save on electrical costs, as an updated system will work efficiently.

Impact

A new system will account for an efficient cooling and heating system for the school, offering a comfortable environment for both the teach and students.

Operating Budget

\$0

Free Cash

\$0

GO Bonds

\$0

Chapter 90

\$0

Other Grants

\$0

School Stabilization

\$1,500,000

MWRA Grants

\$0

MWRA Sewer Loans

\$0

MWRA Water Loans

\$0

Water Bonds

\$0

Sewer Bonds

\$0

Total Cost

\$1,500,000

(1) F550 with Dump Truck body with Plow and Sander

Equipment Acquisition

Project Year 2022



ADMINISTRATION CONTACT

Rebecca Wright

Assistant City Engineer

500 Broadway
Room 310

(617)466-4208

RWright@chelseama.gov

Description

We request the purchase of one F550 snow fighter with dump truck body to replace our aging fleet. We currently have three snow fighters that are 15, 13, and 10 years old (PW-23, PW-09 and PW07). These multi-function trucks are critical for snow fighting and serve a multitude of tasks year around.

Justification

Ford F550 with Dump Bodies are the bread and butter of our fleet. They serve critical roles for snow operations and given their strength and flexibility, complete critical tasks year around.

Impact

Replacing our older vehicles that are 10-15 years old will ensure we have a reliable fleet for snow operations and give us sufficient reliable vehicles to complete tasks year around.

Operating Budget	\$0	Retained Earnings	\$85,000
Free Cash	\$0	MWRA Grants	\$0
GO Bonds	\$0	MWRA Sewer Loans	\$0
Chapter 90	\$0	MWRA Water Loans	\$0
Other Grants	\$0	Water Bonds	\$0
School Stabilization	\$0	Sewer Bonds	\$0
General Stabilization	\$0	Total Cost	\$85,000

Ford F350 Utility Truck with Lift Gate

Equipment Acquisition

Project Year 2022



ADMINISTRATION CONTACT

Rebecca Wright

Assistant City Engineer

500 Broadway
Room 310

(617)466-4208

RWright@chelseama.gov

Description

2021 Ford F350 XL 4x4 Gasoline Regular Cab Dual Rear Wheel 9' Service Body w/Liftgate and Jackhammer Ready Compressor. This truck is used for installation of our street signs throughout Chelsea.

Justification

Our existing sign truck, PW-3, is from the year 2000 and is in very poor condition. With the expansion of our sign work in Chelsea, it is critical to have a functional sign truck to complete all related sign work.

Impact

Replacing our 19 year old sign truck will provide a reliable work truck with all necessary tools to complete critical sign work in Chelsea.

Operating Budget

\$54,000

Free Cash

\$0

GO Bonds

\$0

Chapter 90

\$0

Other Grants

\$0

School Stabilization

\$0

MWRA Grants

\$0

MWRA Sewer Loans

\$0

MWRA Water Loans

\$0

Water Bonds

\$0

Sewer Bonds

\$0

Total Cost

\$54,000

Ford Transit Connect XL: WSD

Equipment Acquisition

Project Year 2022



ADMINISTRATION CONTACT

Rebecca Wright

Assistant City Engineer

500 Broadway
Room 310

(617)466-4208

RWright@chelseama.gov

Description

2021 Ford Transit Connect XL, FWD

Justification

The Ford Transit is an optimal vehicle model for the Chelsea WSD department. This vehicle will be used to store and transport daily and emergency water department equipment. The transit model provides a essential storage area for housing equipment and material.

Impact

This vehicle will save time by having items needed on the road and not solely at the DPW yard. Chelsea DPW took over the Water Sewer & Drain Department in the Summer of 2020, requiring the need for additional fleet to accompany the new and growing Chelsea WSD Crew.

Operating Budget	\$0	Retained Earnings	\$28,500
Free Cash	\$0	MWRA Grants	\$0
GO Bonds	\$0	MWRA Sewer Loans	\$0
Chapter 90	\$0	MWRA Water Loans	\$0
Other Grants	\$0	Water Bonds	\$0
School Stabilization	\$0	Sewer Bonds	\$0
General Stabilization	\$0	Total Cost	\$28,500

Municipal Water Meter Replacement

Equipment Acquisition

Project Year 2022



ADMINISTRATION CONTACT

Fidel Maltez

DPW Commissioner

500 Broadway

617-466-4200

fmaltez@chelseama.gov

Description

DPW will continue to replace all water meters and transmission units for residential and light commercial users. The number of existing meters that stopped reading water usage grew exponentially, the new Sensus meters are reliable and accurate, improving the usage and billing system. In the first year of replacements nearly 1000 meters were replaced, accounting for 1/5 of the meters city wide. This project will continue to replace the remaining city meters.

Justification

The City of Chelsea has a high level of non-working meters and transmission units. These non-working meters result in a high level of inaccuracy in billing. This project will be funded from retained earnings from water (50%) and sewer enterprise (50%) funding - this project is listed as free cash, but will require a separate vote to use retained earnings from the water & sewer enterprise funds.

Impact

Replacing all meters in the city will allow us to account for all water usage in Chelsea. This project will be funded from retained earnings from water (50%) and sewer enterprise (50%) funding.

Operating Budget	\$0	Retained Earnings	\$300,000
Free Cash	\$0	MWRA Grants	\$0
GO Bonds	\$0	MWRA Sewer Loans	\$0
Chapter 90	\$0	MWRA Water Loans	\$0
Other Grants	\$0	Water Bonds	\$0
School Stabilization	\$0	Sewer Bonds	\$0
General Stabilization	\$0	Total Cost	\$300,000

Cisco Firewall Replacement

Equipment Acquisition

Project Year 2022



ADMINISTRATION CONTACT

Ramon Garcia
Chief Information Officer
500 Broadway
617-466-4125
rgarcia@chelseama.gov

Description

Our current Cisco Firewalls (Network Security appliances) are end of life (5 years) and need to be upgraded to the next generation of Security appliances.

Justification

Cisco announced End of Life for our Current Cisco appliances in 2020. We want to be proactive and replace these before they are out of support

Impact

Our firewalls are a key component of the network security and remote access. Downtime of these appliances will impact the entire system, affecting all City Departments, Public Safety and the School Business Office.

Operating Budget	\$0	Retained Earnings	\$0
Free Cash	\$50,000	MWRA Grants	\$0
GO Bonds	\$0	MWRA Sewer Loans	\$0
Chapter 90	\$0	MWRA Water Loans	\$0
Other Grants	\$0	Water Bonds	\$0
School Stabilization	\$0	Sewer Bonds	\$0
General Stabilization	\$0	Total Cost	\$50,000

City Web Site Upgrade/Redesign

Equipment Acquisition

Project Year 2022



ADMINISTRATION CONTACT

Ramon Garcia

Chief Information Officer

500 Broadway

617-466-4125

rgarcia@chelseama.gov

Description

Our current Web sites (www.chelseama.gov and recreation.chelseama.gov) need a redesign to be more up to date with current and future City communication needs.

Justification

Our web sites are over 4 years ago. New tools, and mechanisms to share information are now available that will help on how we exchange information in our web sites. New graphics, tools and more interactive tools are now available. Both sites need to be redesigned and refreshed.

Impact

Our Web sites are our main communication engine with residents, businesses and developers. The outdated look of the websites affect the image of the City.

<i>Operating Budget</i>	\$0	<i>Retained Earnings</i>	\$0
<i>Free Cash</i>	\$45,000	<i>MWRA Grants</i>	\$0
<i>GO Bonds</i>	\$0	<i>MWRA Sewer Loans</i>	\$0
<i>Chapter 90</i>	\$0	<i>MWRA Water Loans</i>	\$0
<i>Other Grants</i>	\$0	<i>Water Bonds</i>	\$0
<i>School Stabilization</i>	\$0	<i>Sewer Bonds</i>	\$0
<i>General Stabilization</i>	\$0	<i>Total Cost</i>	\$45,000

Desktop Replacement

Equipment Acquisition

Project Year 2022



ADMINISTRATION CONTACT

Ramon Garcia
Chief Information Officer
500 Broadway
617-466-4125
rgarcia@chelseama.gov

Description

Rotation of Desktops

Justification

Strategic replacement of employee desktops with a green terminal is a vital part of every large network phase out. With the new terminals these devices can support 90% of the City user community and do not require replacements every 3-4 years anymore— system software/hardware upgrades are done centrally and operating systems can be upgraded without affecting the user at all. For certain specialized applications, such as law enforcement where green terminals are not appropriate, standard desktop

Impact

To maintain the 24/7 99.8% uptime operation it is critical to keep the Desktop hardware and software as current as possible. Part of this maintenance is replacing the units when they approach end of life, before they create problems that will impact network operations such as E911, Email or Police/Fire Operations. These replacement desktops are for the Fire, Police, City hall and the Senior Center staff.

Operating Budget

\$15,000

Free Cash

\$0

GO Bonds

\$0

Chapter 90

\$0

Other Grants

\$0

School Stabilization

\$0

MWRA Grants

\$0

MWRA Sewer Loans

\$0

MWRA Water Loans

\$0

Water Bonds

\$0

Sewer Bonds

\$0

Total Cost

\$15,000

Public Safety Toughbooks

Equipment Acquisition

Project Year 2022



ADMINISTRATION CONTACT

Ramon Garcia
 Chief Information Officer
 500 Broadway
 617-466-4125
 rgarcia@chelseama.gov

Description

Replacement of old toughbooks and installation of new toughbooks

Justification

Strategic replacement of public safety Computers is a vital part of every large network phase out every 3-4 years. These computers are used in our every day operations, and their expected end of life is 3-4 years. The current plan is to balance these replacements. With the addition of four new cruisers and replacement of 6 toughbooks at the fire department, the Information Technology Department will be adding and swapping out a total of 10 units for the next Fiscal Year.

Impact

Operating Budget	\$50,000	MWRA Grants	\$0
Free Cash	\$0	MWRA Sewer Loans	\$0
GO Bonds	\$0	MWRA Water Loans	\$0
Chapter 90	\$0	Water Bonds	\$0
Other Grants	\$0	Sewer Bonds	\$0
School Stabilization	\$0	Total Cost	\$50,000

SAN Storage Expansion

Equipment Acquisition

Project Year 2022



ADMINISTRATION CONTACT

Ramon Garcia

Chief Information Officer

500 Broadway

617-466-4125

rgarcia@chelseama.gov

Description

SAN Storage Upgrade (Storage Area Network) is a network which provides access to consolidated, block level data storage. SANs are primarily used to enhance storage devices, such as disk arrays, tape libraries, and optical jukeboxes, accessible to servers so that the devices appear to the operating system as locally attached devices.

Justification

AS the City becomes more efficient and agile, technology infrastructure also requires to be expanded to be able to support the needs of the City. As legal compliance and laws require, more storage is required/year to accommodate the needs of preserving electronic records. \$50k will provide expansion to the existing storage. The storage has a 5 year lifespan (we are in year 2).

Impact

continued 99.8% uptime, expansion of storage and backups to accommodate the needs of the City Departments

Operating Budget

\$50,000

Free Cash

\$0

GO Bonds

\$0

Chapter 90

\$0

Other Grants

\$0

School Stabilization

\$0

MWRA Grants

\$0

MWRA Sewer Loans

\$0

MWRA Water Loans

\$0

Water Bonds

\$0

Sewer Bonds

\$0

Total Cost

\$50,000

Server Replacement

Equipment Acquisition

Project Year 2022



ADMINISTRATION CONTACT

Ramon Garcia
Chief Information Officer
500 Broadway

617-466-4125
rgarcia@chelseama.gov

Description

3 Year Server rotation. Servers with over 3 years of service will be replaced to keep them supported and under maintenance

Justification

Strategic replacement of critical system servers is a vital part of every large network phase out every 3-4 years. Servers are running all the time without days off, and their expected end of life is 3-4 years. The current plan is to balance these replacements, swapping out a few servers every 2-3 years. This prevents these necessary replacements from overtaxing the city in terms of finances and manpower.

Impact

Continued 99.8% of uptime during business use

<i>Operating Budget</i>	\$80,000	<i>MWRA Grants</i>	\$0
<i>Free Cash</i>	\$0	<i>MWRA Sewer Loans</i>	\$0
<i>GO Bonds</i>	\$0	<i>MWRA Water Loans</i>	\$0
<i>Chapter 90</i>	\$0	<i>Water Bonds</i>	\$0
<i>Other Grants</i>	\$0	<i>Sewer Bonds</i>	\$0
<i>School Stabilization</i>	\$0	<i>Total Cost</i>	\$80,000

Ford Transit Connect XL: Parking

Equipment Acquisition

Project Year 2022



ADMINISTRATION CONTACT

Jeannette Cintron White

City Clerk

500 Broadway
Room 209

617-466-4050

jcwhite@chelseama.gov

Description

A new, 2.0L Ti-VCT GDI I-4 Gasoline engine with Flex-Fuel; 6 speed PowerShift Automatic Transmission; White vehicle with Parking Enforcement graphics package included.

Justification

Our department is currently using a 2004 Ford Taurus that has severe body and frame rust. This 15 year old vehicle is not reliable for our parking enforcement officers to use particularly in the winter. Lastly, the rotation of our cars will optimize vehicle performance as two are over 10 years old.

Impact

The new purchase will increase vehicle reliability and officer safety. No cars will be out of service at any given time during the winter months. It will increase our ability and safety to enforce in adverse winter weather. And finally, the savings in maintenance and repair costs due to the old age of our current parking enforcement fleet.

Operating Budget

\$28,500

Free Cash

\$0

GO Bonds

\$0

Chapter 90

\$0

Other Grants

\$0

School Stabilization

\$0

MWRA Grants

\$0

MWRA Sewer Loans

\$0

MWRA Water Loans

\$0

Water Bonds

\$0

Sewer Bonds

\$0

Total Cost

\$28,500

Library Computer and Furniture

Equipment Acquisition

Project Year 2022



ADMINISTRATION CONTACT

Sarah Gay
Director Public Library
569 Broadway

(617) 466-4355
sgay@chelseama.gov

Description

Assorted Replacement of computer equipment library furniture to include but not limited to DVD Racks, Couch for the Children's Department, Display Rack for the Children's Department, Marker/Write Boards for the Children's Department, etc,

Justification

Continued improvements to heavily trafficked spaces that are outdated, worn or non existent. Replacement and addition of outdated technology. Collections have grown out of allotted furniture. .

Impact

The building will be an open and inviting space that caters to the current needs of the user.

Operating Budget

\$10,000

Free Cash

\$0

GO Bonds

\$0

Chapter 90

\$0

Other Grants

\$0

School Stabilization

\$0

MWRA Grants

\$0

MWRA Sewer Loans

\$0

MWRA Water Loans

\$0

Water Bonds

\$0

Sewer Bonds

\$0

Total Cost

\$10,000

Annual Park Project

Parks and Open Space

Project Year 2022



ADMINISTRATION CONTACT

Alex Train
Director of Housing and
Community Development
500 Broadway
Chelsea, MA 02150

atrain@chelseama.gov

Description

The City intends to renovate or construct a new park, playground, or recreational facility. Primarily funded through a state PARC grant, these requested funds will be leveraged to fulfill the PARC Grant's matching requirement for the acquisition, construction, and/or renovation of parkland. The PARC Grant provides up to \$400,000 in funds, reimbursing up to 70% of eligible project costs in Chelsea

Justification

Open space and play demand continues to change and increase, and the City's open space and recreation facilities continue to age. The need to provide active recreation to improve the general health of the population has become extremely important to the City's residents. It is important to address these issues by providing opportunities to renovate existing parks and playgrounds.

Impact

Improve the accessibility to and quality of open space for residents, enhancing recreational opportunities (passive and active), the urban environment, and public health and well-being.

Operating Budget	\$0	MWRA Grants	\$0
Free Cash	\$350,000	MWRA Sewer Loans	\$0
GO Bonds	\$0	MWRA Water Loans	\$0
Chapter 90	\$0	Water Bonds	\$0
Other Grants	\$400,000	Sewer Bonds	\$0
School Stabilization	\$0	Total Cost	\$750,000

Garden Cemetery - Phase 3

Parks and Open Space

Project Year 2022



ADMINISTRATION CONTACT

Alex Train

Director of Housing and
Community Development

500 Broadway
Chelsea, MA 02150

atrain@chelseama.gov

Description

Implementation of Phase 3 of the City's historic restoration of the cemetery's physical components, including retaining walls, headstones, pathways, fencing, and landscaping.

Justification

The cemetery, an important facet of the City's rich heritage, is a historic and cultural resource for the City, yet it has fallen into disrepair. Its original design represented a major step forward in the development of the modern cemetery design. Restoration has been historically deferred, due complexity and lack of resources. The 2018 master plan for the cemetery identified the components of a major rehabilitation project necessary to reopen the cemetery for public use and enjoyment.

Impact

As a cherished hallmark of the City's open space system, the proposed repairs will preserve the integrity of the retaining walls and continue the repairs to the site's crumbling walls, pathways, and landscaping. Restoration of this important historic asset will eventually enable public access to the cemetery.

Operating Budget

\$0

Free Cash

\$500,000

GO Bonds

\$0

Chapter 90

\$0

Other Grants

\$0

School Stabilization

\$0

MWRA Grants

\$0

MWRA Sewer Loans

\$0

MWRA Water Loans

\$0

Water Bonds

\$0

Sewer Bonds

\$0

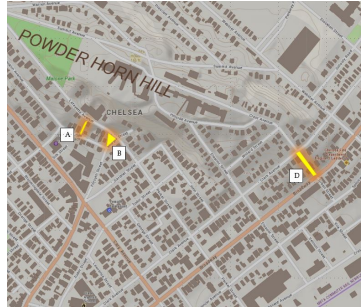
Total Cost

\$500,000

Historic Staircase Rehabilitation Design

Parks and Open Space

Project Year 2022



ADMINISTRATION CONTACT

Alex Train

Director of Housing and
Community Development

500 Broadway
Chelsea, MA 02150

atrain@chelseama.gov

Description

The City of Chelsea seeks to rehabilitate three separate staircases adjacent to Powderhorn Hill and Upper Broadway. Rehabilitation will include new concrete stairways, new railings, public art interventions, and aesthetic and utilitarian lighting schemes. This project will fund the design of this renovation.

Justification

The staircases in their current condition represent a public safety hazard and are an eye sore for residents and visitors of Chelsea. Improving the safety, functionality, and aesthetics of these staircases will bring vibrancy and will conduce foot traffic in and around these residential areas and some of the most scenic views of Chelsea and the Greater Boston Area.

Impact

The primary impact of this work will be an improvement to pedestrian safety. Otherwise, beautification, new lighting, and public art interventions will promote much needed urban design interventions for these residential areas.

Operating Budget	\$0	Retained Earnings	\$0
Free Cash	\$100,000	MWRA Grants	\$0
GO Bonds	\$0	MWRA Sewer Loans	\$0
Chapter 90	\$0	MWRA Water Loans	\$0
Other Grants	\$0	Water Bonds	\$0
School Stabilization	\$0	Sewer Bonds	\$0
General Stabilization	\$0	Total Cost	\$100,000

Mill Creek Resilience Planning

Parks and Open Space

Project Year 2022



ADMINISTRATION CONTACT

Alex Train

Director of Housing and
Community Development

500 Broadway
Chelsea, MA 02150

atrain@chelseama.gov

Description

Mill Creek is a tributary to Chelsea Creek, bordered on the north by Revere. Ecologically, the Creek functions as Chelsea's largest and most biodiverse salt marsh, despite contamination resulting from intensive industrial land use and development adjacent to this precious resource. A Mill Creek Resilience Planning Study will include mitigating sediment runoff, degradation of natural resources and wildlife, coastal stabilization, and flood mitigation.

Justification

A Mill Creek Resilience Planning would help to enhance the lives of adjacent property owners and residents, as well as the precious ecosystems and natural resources it houses today. Coastal rehabilitation and restoration, in tandem with beautification and the new introduction of open space will provide economic, environmental, and social benefits to the City of Chelsea.

Impact

The resulting impacts of a Mill Creek Resilience Planning effort are manifold. The assemblage of meaningful narratives, environmental analysis, and technical data will allow for the creation of competitive grant packages which will not only elevate the site politically, but will bring in much needed state and federal resources to Mill Creek and will support long range planning efforts to remediate, restore, and generally assuage issues plaguing the creek today.

Operating Budget

\$0

Free Cash

\$60,000

GO Bonds

\$0

Chapter 90

\$0

Other Grants

\$240,000

School Stabilization

\$0

MWRA Grants

\$0

MWRA Sewer Loans

\$0

MWRA Water Loans

\$0

Water Bonds

\$0

Sewer Bonds

\$0

Total Cost

\$300,000

Camera Replacement and Additions

Public Safety

Project Year 2022



ADMINISTRATION CONTACT

Brian A. Kyes

Chief of Police

19 Park Street

(617)466-4810

bkyes@chelseama.gov

Description

(10) Wireless Surveillance Cameras each year

Justification

Camera system has been in use for over 17 years, older ones need replacement and new locations are needed to cover areas around the city

Impact

Entire City

Operating Budget

\$0

Free Cash

\$50,000

GO Bonds

\$0

Chapter 90

\$0

Other Grants

\$0

School Stabilization

\$0

MWRA Grants

\$0

MWRA Sewer Loans

\$0

MWRA Water Loans

\$0

Water Bonds

\$0

Sewer Bonds

\$0

Total Cost

\$50,000

Marked Cruisers

Public Safety

Project Year 2022



ADMINISTRATION CONTACT

Brian A. Kyes

Chief of Police

19 Park Street

(617)466-4810

bkyes@chelseama.gov

Description

(4) Marked SUV's \$ 62,000

Justification

Rotation of fleet Yearly optimizes vehicle performance._

Impact

Entire City

Operating Budget

\$0

MWRA Grants

\$0

Free Cash

\$248,000

MWRA Sewer Loans

\$0

GO Bonds

\$0

MWRA Water Loans

\$0

Chapter 90

\$0

Water Bonds

\$0

Other Grants

\$0

Sewer Bonds

\$0

School Stabilization

\$0

Total Cost

\$248,000

Portable Radios

Public Safety

Project Year 2022



ADMINISTRATION CONTACT

Brian A. Kyes

Chief of Police

19 Park Street

(617)466-4810

bkyes@chelseama.gov

Description

Radios for Officers replacement schedule 25 radios per year
APX 6000 Motorola

Justification

Radios are over 14 years old and beginning to see extreme wear and tear

Impact

Communication between officers are critical and with the radios being so old, they are breaking down.

Operating Budget

\$0

Free Cash

\$105,459

GO Bonds

\$0

Chapter 90

\$0

Other Grants

\$0

School Stabilization

\$0

MWRA Grants

\$0

MWRA Sewer Loans

\$0

MWRA Water Loans

\$0

Water Bonds

\$0

Sewer Bonds

\$0

Total Cost

\$105,459

Unmarked Cruiser

Public Safety

Project Year 2022



ADMINISTRATION CONTACT

Brian A. Kyes

Chief of Police

19 Park Street

(617)466-4810

bkyes@chelseama.gov

Description

Ford explorer

Justification

Rotation of fleet Yearly optimizes vehicle performance._
No cars are out of service and fewer repairs

Impact

Entire City

Operating Budget

\$0

Free Cash

\$0

GO Bonds

\$0

Chapter 90

\$0

Other Grants

\$50,000

School Stabilization

\$0

MWRA Grants

\$0

MWRA Sewer Loans

\$0

MWRA Water Loans

\$0

Water Bonds

\$0

Sewer Bonds

\$0

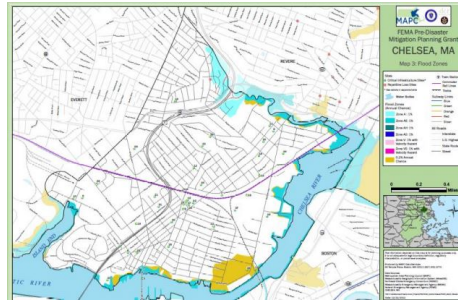
Total Cost

\$50,000

Hazard Mitigation Plan Update

Public Safety

Project Year 2022



ADMINISTRATION CONTACT

Alex Train

Director of Housing and
Community Development

500 Broadway
Chelsea, MA 02150

atrain@chelseama.gov

Description

According to the Federal Emergency Management Agency and the Massachusetts Emergency Management Agency, a community must review and revise their existing Hazard Mitigation Plans every five years in order to be eligible for FEMA mitigation project grant funding. The City of Chelsea's existing Hazard Mitigation Plan will expire March 2022.

Justification

The planning and approval process for a community Hazard Mitigation Plan can take upwards of 10 to 11 months. The process involves the building of a planning team, a public engagement process, risk assessments, mitigation strategies, and approval by MEMA, FEMA, and Chelsea's City Council. Therefore, we request funding to embark on this necessary endeavour for an updated plan to be formally approved by March of 2022.

Impact

Having a hazard mitigation plan enables communities to secure FEMA grant funding. As the City of Chelsea faces an onslaught of pervasive and dangerous coastal flooding, storms, urban heat, and pollution of air quality, federal financing for infrastructure, environmental, and public health improvements is vital. A new hazard mitigation plan will enable funding to be allocated to the City of Chelsea for these purposes, while supporting a community oriented fight against natural disasters.

<i>Operating Budget</i>	\$0	<i>MWRA Grants</i>	\$0
<i>Free Cash</i>	\$25,000	<i>MWRA Sewer Loans</i>	\$0
<i>GO Bonds</i>	\$0	<i>MWRA Water Loans</i>	\$0
<i>Chapter 90</i>	\$0	<i>Water Bonds</i>	\$0
<i>Other Grants</i>	\$0	<i>Sewer Bonds</i>	\$0
<i>School Stabilization</i>	\$0	<i>Total Cost</i>	\$25,000

Island River Barrier Permitting

Public Safety

Project Year 2022



ADMINISTRATION CONTACT

Alex Train

Director of Housing and
Community Development

500 Broadway
Chelsea, MA 02150

atrain@chelseama.gov

Description

The City of Chelsea is working on the redesign and improvement of the Island End River Park. This project aims to address coastal flooding, improve park accessibility and placemaking, enhance the natural shoreline, and provide equitable waterfront access. As a part of design development and an eventual bid package for construction, a robust permitting scope is necessary. Environmental engineering and analysis will yield logistical and financial strategies to develop a full permitting package.

Justification

The construction of a coastal barrier and wetland restoration program will undoubtedly involve a myriad of permitting requirements from local, state, and federal levels. Moreover, the development of a complete permitting scope will unlock additional financial resources and will aid in the forecasting of total construction costs associated with the implementation of this project. The Island End River flood pathway will cause massive property and community damage if not resolved swiftly.

Impact

The construction of a coastal barrier, wetlands restoration, and the implementation of enhanced open spaces will benefit economic, social, and environmental facets of the City of Chelsea and the broader region. Properties and residents situated within the Island End River flood pathway will incur massive financial degradation if a barrier is not constructed in a timely manner.

Operating Budget

\$0

Free Cash

\$120,000

GO Bonds

\$0

Chapter 90

\$0

Other Grants

\$0

School Stabilization

\$0

MWRA Grants

\$0

MWRA Sewer Loans

\$0

MWRA Water Loans

\$0

Water Bonds

\$0

Sewer Bonds

\$0

Total Cost

\$120,000

Signalization Upgrades at Select Locations

Public Safety

Project Year 2022



ADMINISTRATION CONTACT

Alex Train

Director of Housing and
Community Development

500 Broadway
Chelsea, MA 02150

atrain@chelseama.gov

Description

Modernization of the various intersection and streetscape, as well as funds to retrofit obsolete signals at select intersections with poor levels of service, evident pedestrian/vehicular conflicts, and rising congestion. Old systems will be replaced with new, Intelligent Transportation Systems, enabling a suite of enhanced features, including the ability to interpret and respond to traffic conditions.

Justification

New intelligent signal systems will efficiently manage congestion and remedy unsafe intersection conditions for pedestrians and vehicles. Intersections throughout the City grapple with growing congestion and poor levels of service. Furthermore, many signals are not synchronized and do not operate in unison. New systems will allow signals to communicate with each other, as well with a centralized City Hall dashboard, where real time traffic conditions can be monitored.

Impact

Upgraded intersections will reduce congestion, increase traffic safety, and enable safe pedestrian movements across intersections. Intelligent signal systems will yield a more efficient movement of traffic, improved air quality, enhanced pedestrian environment, and a reduction in delay, which can negatively affect the local economy and quality of life.

Operating Budget

\$0

Free Cash

\$500,000

GO Bonds

\$0

Chapter 90

\$0

Other Grants

\$0

School Stabilization

\$0

MWRA Grants

\$0

MWRA Sewer Loans

\$0

MWRA Water Loans

\$0

Water Bonds

\$0

Sewer Bonds

\$0

Total Cost

\$500,000

Car 2 Replacement (Shift Commander)

Public Safety

Project Year 2022



ADMINISTRATION CONTACT

Leonard Albanese
 Chief of Department
 311 Chestnut St.

 1-617-466-4616
 lalbanese@chelseama.gov

Description

Replace the Shift Commander vehicle. Car 2 is the primary vehicle of the on duty Deputy Chief. This vehicle is used to respond to all multi-unit responses as the Incident Commander, who supervises the operations.

Justification

The current Shift Commander vehicle is a 2013, and will be replaced at the 8 year mark. (Our overall goal is to replace aerial ladders at 12, pumpers at 10, staff vehicles at 10 and front line command vehicle at 7 years.)

Impact

This project will ensure that we maintain our projected goal in vehicle replacement in order to provide reliable and effective first responder transportation to active incidents. The existing 2013 will be moved to reserve status as the back up command unit; and, as the second on duty Fire Suppression Deputy during working fires and severe weather related events.

Operating Budget	\$0	MWRA Grants	\$0
Free Cash	\$85,000	MWRA Sewer Loans	\$0
GO Bonds	\$0	MWRA Water Loans	\$0
Chapter 90	\$0	Water Bonds	\$0
Other Grants	\$0	Sewer Bonds	\$0
School Stabilization	\$0	Total Cost	\$85,000

Police Radio System Upgrade

Public Safety

Project Year 2022



ADMINISTRATION CONTACT

Steve Staffier

Director

45 Washington Ave.

(781)307-1366

sstaffier@chelseama.gov

Description

Upgrade of Police Channel 1 and Channel 14/15 from analog modulation to P25 digital modulation. This will increase the usable coverage area of operation for both channels and clear up the audio performance. This upgrade includes repeaters, comparators, and antennas. (Req Amt \$300,000.00)

Justification

The current radio equipment is aging and beyond the manufactures repair date and not P25 capable. The antennas at the main and back up site are beyond their life as well.

Impact

No significant impact while upgrading... one channel will be done at a time. This will limit down time.

Operating Budget

\$0

Free Cash

\$300,000

GO Bonds

\$0

Chapter 90

\$0

Other Grants

\$0

School Stabilization

\$0

MWRA Grants

\$0

MWRA Sewer Loans

\$0

MWRA Water Loans

\$0

Water Bonds

\$0

Sewer Bonds

\$0

Total Cost

\$300,000

Chapter 90 Roadway & Sidewalk Improvements

Surface Enhancement

Project Year 2022



ADMINISTRATION CONTACT

Fidel Maltez

DPW Commissioner

500 Broadway

617-466-4200

fmaltez@chelseama.gov

Description

Surface restoration and improvements to both roadway and sidewalk assets on the locations identified by the department of public works. Streets include but are not limited to School St., Cherry St., Winnisimmet St., Washburn St., 4th St., Lafayette Ave., Front St., Grove St., Marlborough St., Lambert Ave., and Prospect Ave . The free cash portion of this funding will also be utilized to cover any deficits in prior year chapter 90 expenditures.

Justification

Recent roadway analysis conducted by Street Scan indicates these Roadways require corrective action to restore acceptable level of ride characteristics.

Sidewalks although in good shape generally need to be modified to comply with Code requirements of the ADA.

Impact

Code compliant sidewalks, Serviceable roadways. Both reduce the City Operational costs for spot maintenance and reduce the City's Civil liabilities. Increased safety and accessibility for handicapped citizens.

<i>Operating Budget</i>	\$0	<i>MWRA Grants</i>	\$0
<i>Free Cash</i>	\$600,000	<i>MWRA Sewer Loans</i>	\$0
<i>GO Bonds</i>	\$0	<i>MWRA Water Loans</i>	\$0
<i>Chapter 90</i>	\$596,000	<i>Water Bonds</i>	\$0
<i>Other Grants</i>	\$0	<i>Sewer Bonds</i>	\$0
<i>School Stabilization</i>	\$0	<i>Total Cost</i>	\$1,196,000

Marlborough Street Sidewalks

Surface Enhancement

Project Year 2022



ADMINISTRATION CONTACT

Rebecca Wright

Assistant City Engineer

500 Broadway
Room 310

(617)466-4208

RWright@chelseama.gov

Description

Sidewalk restoration of Marlborough Street from Broadway to Grove Street. The work will include: excavating the existing sidewalk and install with new concrete sidewalk, remove and reset the existing granite curb and install new ADA wheelchair ramps

Justification

The current condition of Marlborough Street is poor. There are areas of bituminous concrete sidewalk, areas of missing sidewalk and concrete curbing

Impact

Code compliant sidewalks. Reduce both the City Operational costs for spot repairs and City's Civil liability. The finish product will also give Marlborough Street a polished look, increasing visual appeal.

Operating Budget

\$0

Free Cash

\$400,000

GO Bonds

\$0

Chapter 90

\$0

Other Grants

\$0

School Stabilization

\$0

MWRA Grants

\$0

MWRA Sewer Loans

\$0

MWRA Water Loans

\$0

Water Bonds

\$0

Sewer Bonds

\$0

Total Cost

\$400,000

CDBG Surface Enhancements

Surface Enhancement

Project Year 2022



ADMINISTRATION CONTACT

Alex Train

Director of Housing and
Community Development

500 Broadway
Chelsea, MA 02150

atrain@chelseama.gov

Description

Building on the momentum garnered through recent public space projects, this project focuses on Chester Avenue, from Hawthorne Street to Lynn Street, and Shawmut Street from Bellingham Street to Central Avenue. The scope of work consists of sidewalk replacement and roadway repaving to achieve ADA compliance and overall beautification of these downtown residential corridors. This project will be funded in part through the Community Development Block Grant Program.

Justification

Overall, the condition of the road and sidewalks have substantially deteriorated. Untended infrastructure has led to visual signs of decay, discouraging use and eroding quality of life.

Impact

Bringing sidewalks up to ADA compliance and ameliorating deteriorating conditions will provide manifold benefits to the surrounding neighborhood. Moreover, repaving of the roadway will culminate to a beautified dense residential area adjacent to Chelsea's Downtown Commercial District, thus increasing the aesthetic and functional value of Chester Avenue and Shawmut Street.

Operating Budget

\$0

Free Cash

\$110,000

GO Bonds

\$0

Chapter 90

\$0

Other Grants

\$340,000

School Stabilization

\$0

MWRA Grants

\$0

MWRA Sewer Loans

\$0

MWRA Water Loans

\$0

Water Bonds

\$0

Sewer Bonds

\$0

Total Cost

\$450,000

Complete Streets Implementation

Surface Enhancement

Project Year 2022



ADMINISTRATION CONTACT

Alex Train

Director of Housing and
Community Development

500 Broadway
Chelsea, MA 02150

atrain@chelseama.gov

Description

Implementation of a multi-modal, Complete Streets design and construction project, recommended as part of the City's Complete Streets Prioritization Plan. Annually, the City will work with MassDOT to select projects within the City's plan, dependent on funding availability. Such projects could include roadway and sidewalk reconstruction with bike lanes, intersection upgrades, or pavement marking projects.

Justification

MassDOT reserves \$400,000 annually for communities that have adopted Complete Streets policies, completed a Complete Streets Plan, and are willing to embark on a Complete Streets construction project.

Impact

Enhanced public safety, public health, and mobility for the general populace

Operating Budget

\$0

Free Cash

\$75,000

GO Bonds

\$0

Chapter 90

\$0

Other Grants

\$400,000

School Stabilization

\$0

MWRA Grants

\$0

MWRA Sewer Loans

\$0

MWRA Water Loans

\$0

Water Bonds

\$0

Sewer Bonds

\$0

Total Cost

\$475,000

Everett and Chestnut Redesign

Surface Enhancement

Project Year 2022



ADMINISTRATION CONTACT

Alex Train
Director of Housing and
Community Development
500 Broadway
Chelsea, MA 02150

atrain@chelseama.gov

Description

Major improvements include the removal of an existing island, currently functioning poorly as a pedestrian reprieve with no crosswalks and having no ADA compliance. Moreover, the removal of this triangular island will enable the roadway to be redesigned to include a potential bus priority area and signalization in order to usher the MBTA's 111, 112, and 114 buses through the intersection while allowing ample space at the adjacent bus stop for on and off boarding.

Justification

The intersection of Everett Avenue, Third Street, and Chestnut Street and the area adjacent to the Route 1 On-Ramp in Chelsea, MA is a heavily traveled corridor and intersection by pedestrians, bicyclists, and vehicular operators. Presently, the project area encompasses some of Massachusetts worst HSIP crash clusters. Most recently, a pedestrian was struck and killed at the Everett Avenue on ramp by an MBTA 111 bus. The corridor clearly warrants design interventions to increase safety for all.

Impact

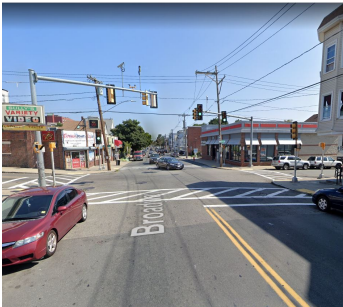
Safety for all users of this project area is the City of Chelsea's top priority. Through safety improvements, however, other co-benefits can be realized by way of congestion reduction, ease of on-boarding and off-boarding for 111 bus patrons, beautification, increased ADA compliance, and functional yet aesthetic lighting interventions.

<i>Operating Budget</i>	\$0	<i>MWRA Grants</i>	\$0
<i>Free Cash</i>	\$155,000	<i>MWRA Sewer Loans</i>	\$0
<i>GO Bonds</i>	\$0	<i>MWRA Water Loans</i>	\$0
<i>Chapter 90</i>	\$0	<i>Water Bonds</i>	\$0
<i>Other Grants</i>	\$0	<i>Sewer Bonds</i>	\$0
<i>School Stabilization</i>	\$0	<i>Total Cost</i>	\$155,000

Upper Broadway Easement Acquisition

Surface Enhancement

Project Year 2022



ADMINISTRATION CONTACT

Alex Train
Director of Housing and
Community Development
500 Broadway
Chelsea, MA 02150

atrain@chelseama.gov

Description

The Department obtained approximately \$9,669,765 in federal transportation funding to construct surface and drainage improvements on upper Broadway, from City Hall Ave. to Revere, in FY'22. During the design phase, the Department identified approximately six easements necessary to implement the project. Funding is requested for legal services and easement costs, including the preparation of deeds, easement plans, and easement acquisition.

Justification

There are minor sections of the project corridor where the City's sidewalk will cross private property. Because this is a federally financed project, the City must follow a specific legal process to formalize all conditions involving private property, even though some may predate the project. All easements must be secured prior to the beginning of construction.

Impact

As a whole, this project will markedly improve the upper Broadway corridor, resulting in new roadway surfacing, sidewalks, street trees, bike lanes, bus stops, intersections, traffic signals, and drainage. Together, this work will alleviate chronic roadway safety issues, reduce transit delays, and significantly enhance the corridor.

Operating Budget	\$0	MWRA Grants	\$0
Free Cash	\$100,000	MWRA Sewer Loans	\$0
GO Bonds	\$0	MWRA Water Loans	\$0
Chapter 90	\$0	Water Bonds	\$0
Other Grants	\$0	Sewer Bonds	\$0
School Stabilization	\$0	Total Cost	\$100,000

Central Ave & Willow St Water, Sewer and Roadway

Utility Enhancement

Project Year 2022



ADMINISTRATION CONTACT

Rebecca Wright

Assistant City Engineer

500 Broadway
Room 310

(617)466-4208

RWright@chelseama.gov

Description

Replacement of Water, Sewer, Drain and Roadway on Central Avenue from Willow Street to Highland Street & Willow Street from Watts St to Central Avenue.

Justification

Central Ave is a main corridor for motorists traveling off and on the Chelsea Street Bridge. Updating the roadway including signalization, curb and sidewalk replacement, bike lanes, and lighting improvements will give the corridor a refreshing transformation. The utilities in this area are in need of upgrade. Particularly the storm drain. Upsizing and redirecting the storm drain flow will reduce the amount of runoff in this area.

Impact

The residents in this area will have a reliable underground utility system. The polished surface improvements will provide a welcoming neighborhood to reside in. Additionally, the signalization and line striping will offer safer pedestrian travel from those traveling from the northern side of Central Ave to Highland Park as well as businesses on the southern side of Central Ave and vice versa.

Operating Budget

\$0

Free Cash

\$0

GO Bonds

\$1,000,000

Chapter 90

\$0

Other Grants

\$0

School Stabilization

\$0

MWRA Grants

\$0

MWRA Sewer Loans

\$0

MWRA Water Loans

\$0

Water Bonds

\$1,000,000

Sewer Bonds

\$1,500,000

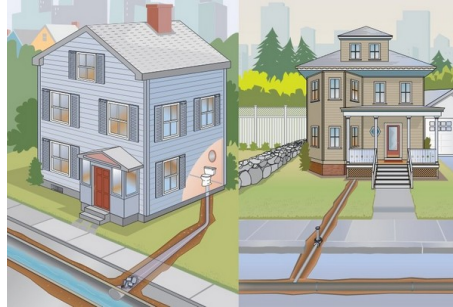
Total Cost

\$3,500,000

Lead Service Replacement Program

Utility Enhancement

Project Year 2022



ADMINISTRATION CONTACT

Rebecca Wright

Assistant City Engineer

500 Broadway
Room 310

(617)466-4208

RWright@chelseama.gov

Description

This project provides construction services to replace lead service line in private property up to the water meter. Previously this was the responsibility of the home owner. This project will fund the third year of construction costs to replace lead services. In the first year of replacements, the Cities hired contractor replaced over 75 services. This type of production is expected to continue to grow in FY 22.

Justification

The MWRA has established a \$100M interest free loan program to communities for the purpose of replacing lead services. Both the publicly owned portion and private owned portion are included. Often times when building water services are broken it is difficult for the homeowner to fund replacement.

Impact

Lead pipes are a large public health hazard to residents. This project will replace any documented lead service lines in the City at no cost to the property owner.

Operating Budget

Free Cash

GO Bonds

Chapter 90

Other Grants

School Stabilization

\$0

\$0

\$0

\$0

\$0

\$0

MWRA Grants

MWRA Sewer Loans

MWRA Water Loans

Water Bonds

Sewer Bonds

Total Cost

\$0

\$0

\$300,000

\$0

\$0

\$300,000

Stormwater Management Plan

Utility Enhancement

Project Year 2022



ADMINISTRATION CONTACT

Rebecca Wright

Assistant City Engineer

500 Broadway
Room 310

(617)466-4208

RWright@chelseama.gov

Description

Implementation of NPDES Stormwater Permit Compliance Activities including storm water sampling and pipe condition data collection, internal pipe inspection, polluter identification, mapping, engineering analysis and design, and physical correction of deficiencies.

Justification

The City of Chelsea is subject to the EPA's MS4 storm water permitting requirements. The new permit requires reporting the actions listed above and additional requirements for reporting on the amount of impervious removed from the drainage area. Providing training to those individuals involved with development/redevelopment will be key to achieving a successful program.

Impact

The project will be a multi-year project and will ensure the City's compliance with the Clean Water Act avoiding any likely non-compliance notices and will result in improved surface water conditions in the Chelsea, Mystic, Island End Rivers creating a healthier environment for the citizens of Chelsea

Operating Budget

\$150,000

Free Cash

\$0

GO Bonds

\$0

Chapter 90

\$0

Other Grants

\$0

School Stabilization

\$0

MWRA Grants

\$0

MWRA Sewer Loans

\$0

MWRA Water Loans

\$0

Water Bonds

\$0

Sewer Bonds

\$0

Total Cost

\$150,000

Program Area: Equipment Acquisition

Program Area: Equipment Acquisition			Grant Funding					Enterprise Funding	General Fund Borrowing	Water Fund Borrowing		Sewer Fund Borrowing			
Project Description	Operating Budget	Free Cash	Misc. Grant	School Stabilization	MWRA Grant	General Stablization	Chapter 90	Retained Earnings	Gen Bonds	Water Bonds	MWRA Water Loan	MWRA Sewer Loan	Sewer Bonds	Total	
(1) F550 with Dump Truck body with Plow and Sander								\$85,000.00						\$85,000.00	
Ford F350 Utility Truck with Lift Gate	\$54,000.00													\$54,000.00	
Ford Transit Connect XL: WSD								\$28,500.00						\$28,500.00	
Municipal Water Meter Replacement								\$300,000.00						\$300,000.00	
Cisco Firewall Replacement		\$50,000.00												\$50,000.00	
City Web Site Upgrade/Redesign		\$45,000.00												\$45,000.00	
Desktop Replacement	\$15,000.00													\$15,000.00	
Public SafetyToughbooks	\$50,000.00													\$50,000.00	
SAN Storage Expansion	\$50,000.00													\$50,000.00	
Server Replacement	\$80,000.00													\$80,000.00	
Ford Transit Connect XL: Parking	\$28,500.00													\$28,500.00	
Library Computer and Furniture	\$10,000.00													\$10,000.00	
TOTAL	\$287,500.00	\$95,000.00						\$413,500.00					\$796,000.00		

Program Area: Parks and Open Space

Program Area: Parks and Open Space			Grant Funding					Enterprise Funding	General Fund Borrowing	Water Fund Borrowing		Sewer Fund Borrowing		Total
			Misc. Grant	School Stabilization	MWRA Grant	General Stabilization	Chapter 90	Retained Earnings	Gen Bonds	Water Bonds	MWRA Water Loan	MWRA Sewer Loan	Sewer Bonds	
Project Description	Operating Budget	Free Cash												
Annual Park Project		\$350,000.00	\$400,000.00											\$750,000.00
Garden Cemetery - Phase 3		\$500,000.00												\$500,000.00
Historic Staircase Rehabilitation Design		\$100,000.00												\$100,000.00
Mill Creek Resilience Planning		\$60,000.00	\$240,000.00											\$300,000.00
TOTAL		\$1,010,000.00	\$640,000.00											\$1,650,000.00

Program Area: Public Buildings and Facilities

[illegible]

Program Area: Public Safety			Grant Funding					Enterprise Funding	General Fund Borrowing	Water Fund Borrowing		Sewer Fund Borrowing		
Project Description	Operating Budget	Free Cash	Misc. Grant	School Stabilization	MWRA Grant	General Stablization	Chapter 90	Retained Earnings	Gen Bonds	Water Bonds	MWRA Water Loan	MWRA Sewer Loan	Sewer Bonds	Total
Camera Replacement and Additions		\$50,000.00												\$50,000.00
Marked Cruisers		\$248,000.00												\$248,000.00
Portable Radios		\$105,459.00												\$105,459.00
Unmarked Cruiser			\$50,000.00											\$50,000.00
Hazard Mitigation Plan Update		\$25,000.00												\$25,000.00
Island River Barrier Permitting		\$120,000.00												\$120,000.00
Signalization Upgrades at Select Locations		\$500,000.00												\$500,000.00
Car 2 Replacement (Shift Commander)		\$85,000.00												\$85,000.00
Police Radio System Upgrade		\$300,000.00												\$300,000.00
TOTAL		\$1,433,459.00	\$50,000.00											\$1,483,459.00

Program Area: Surface Enhancement			Grant Funding					Enterprise Funding	General Fund Borrowing	Water Fund Borrowing		Sewer Fund Borrowing		
Project Description	Operating Budget	Free Cash	Misc. Grant	School Stabilization	MWRA Grant	General Stablization	Chapter 90	Retained Earnings	Gen Bonds	Water Bonds	MWRA Water Loan	MWRA Sewer Loan	Sewer Bonds	Total
Chapter 90 Roadway & Sidewalk Improvements		\$500,000.00					\$596,000.00							\$1,096,000.00
Marlborough Street Sidewalks		\$400,000.00												\$400,000.00
CDBG Surface Enhancements		\$110,000.00	\$340,000.00											\$450,000.00
Complete Streets Implementation		\$75,000.00	\$400,000.00											\$475,000.00
Everett and Chestnut Redesign		\$155,000.00												\$155,000.00
Upper Broadway Easement Acquisition		\$100,000.00												\$100,000.00
TOTAL		\$1,340,000.00	\$740,000.00				\$596,000.00							\$2,676,000.00

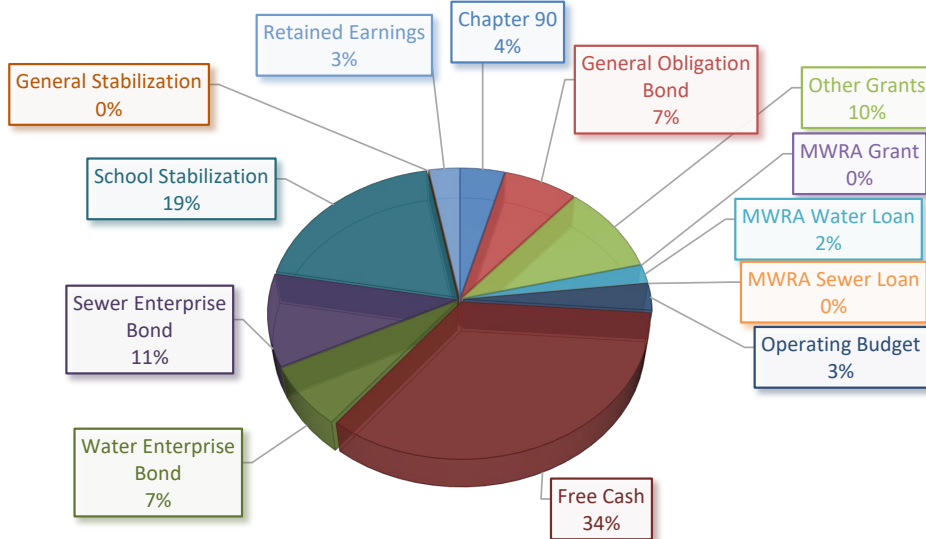
Program Area: Utility Enhancement			Grant Funding					Enterprise Funding	General Fund Borrowing	Water Fund Borrowing		Sewer Fund Borrowing		
Project Description	Operating Budget	Free Cash	Misc. Grant	School Stabilization	MWRA Grant	General Stablization	Chapter 90	Retained Earnings	Gen Bonds	Water Bonds	MWRA Water Loan	MWRA Sewer Loan	Sewer Bonds	Total
Central & Willow Water, Sewer and Roadway									\$1,000,000.00	\$1,000,000.00			\$1,500,000.00	\$3,500,000.00
Lead Service Replacement Program											\$300,000.00			\$300,000.00
Stormwater Management Plan	\$150,000.00													\$150,000.00
TOTAL	\$150,000.00								\$1,000,000.00	\$1,000,000.00	\$300,000.00		\$1,500,000.00	\$3,950,000.00

Capital Plan Revenue Source Detail by Year

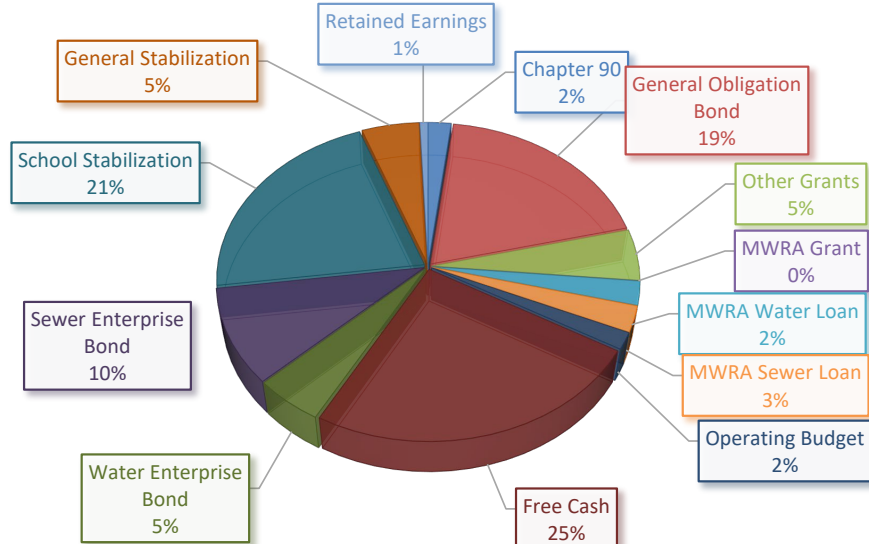
FY'22 - FY'26

	FY'22	FY'23	FY'24	FY'25	FY'26	Total
Chapter 90	\$596,000	\$596,005	\$0	\$0	\$0	\$1,192,005
General Obligation Bond	\$1,000,000	\$2,726,500	\$1,500,000	\$1,500,000	\$5,000,000	\$11,726,500
Other Grants	\$1,430,000	\$450,000	\$450,000	\$450,000	\$450,000	\$3,230,000
MWRA Grant	\$0	\$0	\$0	\$0	\$0	\$0
MWRA Water Loan	\$300,000	\$300,000	\$300,000	\$300,000	\$300,000	\$1,500,000
MWRA Sewer Loan	\$0	\$1,630,000	\$0	\$0	\$0	\$1,630,000
Operating Budget	\$437,500	\$398,000	\$150,000	\$75,000	\$0	\$1,060,500
Free Cash	\$4,928,459	\$4,484,459	\$2,604,459	\$2,019,459	\$1,054,459	\$15,091,295
Water Enterprise Bond	\$1,000,000	\$0	\$1,000,000	\$1,000,000	\$0	\$3,000,000
Sewer Enterprise Bond	\$1,500,000	\$500,000	\$2,000,000	\$2,050,000	\$0	\$6,050,000
School Stabilization	\$2,750,000	\$3,300,000	\$1,740,000	\$2,650,000	\$2,690,000	\$13,130,000
General Stabilization	\$0	\$3,000,000	\$0	\$0	\$0	\$3,000,000
Retained Earnings	\$413,500	\$0	\$0	\$0	\$0	\$413,500
Total	\$14,355,459	\$17,384,964	\$9,744,459	\$10,044,459	\$9,494,459	\$61,023,800

FY '22 FUNDING SOURCES



FY '22-'26 FUNDING SOURCES

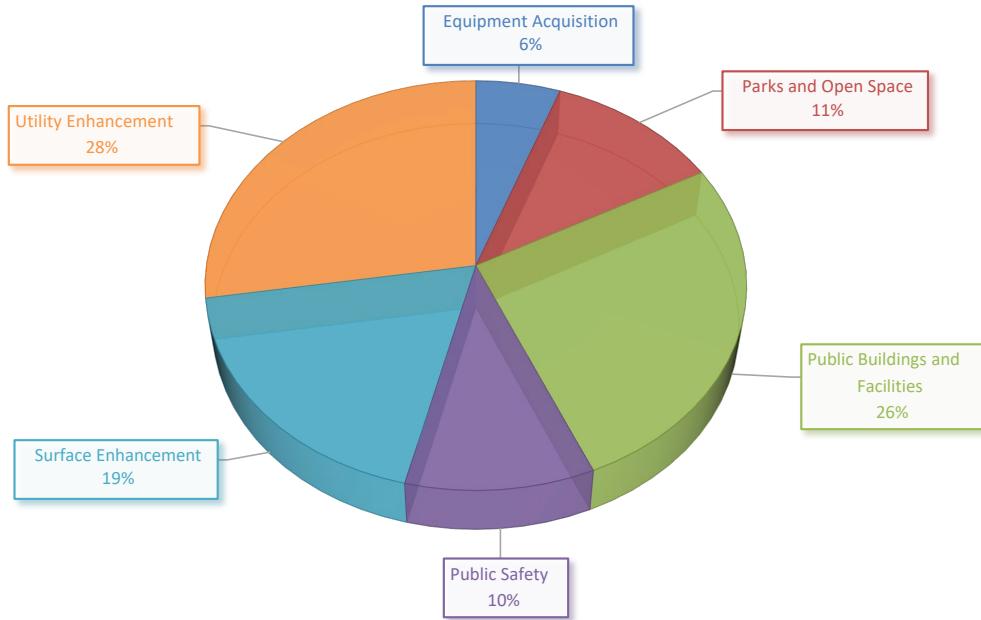


Capital Plan Expenditures by Program Area

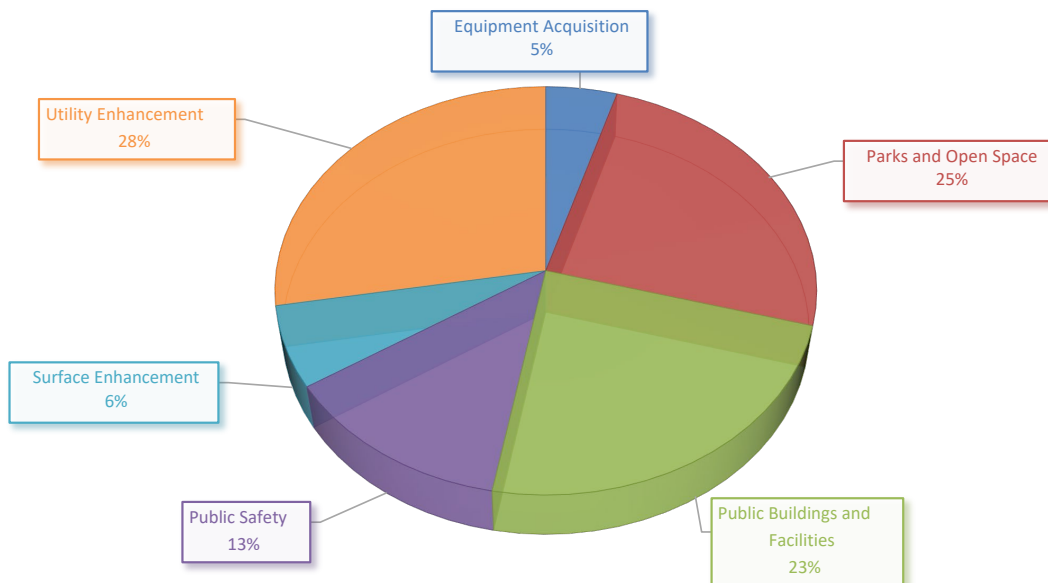
FY'22 - FY'26

	FY'22	FY'23	FY'24	FY'25	FY'26	Total
Equipment Acquisition Parks and Open Space Public	\$796,000	\$553,000	\$825,000	\$375,000	\$300,000	\$2,849,000.00
Buildings and Facilities	\$1,650,000	\$3,226,500	\$2,940,000	\$3,765,000	\$3,440,000	\$15,021,500.00
Public Safety	\$3,800,000	\$4,400,000	\$600,000	\$600,000	\$5,000,000	\$14,400,000.00
Surface Enhancement	\$1,483,459	\$5,244,459	\$394,459	\$394,459	\$394,459	\$7,911,295.00
Utility Enhancement	\$2,676,000	\$1,246,005	\$0.00	\$0.00	\$0.00	\$3,922,005.00
Utility Enhancement	\$3,950,000	\$2,715,000	\$4,985,000	\$4,910,000	\$360,000	\$16,920,000.00
Total	\$14,355,459	\$17,384,964	\$9,744,459	\$10,044,459	\$9,494,459	\$61,023,800.00

FY '22 EXPENDITURES BY PROGRAM AREA



FY '22-'26 EXPENDITURES BY PROGRAM AREA



2023 Projects

					Funding		Funding	Borrowing		Borrowing		Borrowing		Borrowing			
Project Description	Dept	Area	Operating Budget	Free Cash	Misc. Grant	School Stabilization	MWRA Grant	General Stablization	Chapter 90	Retained Earnings	Gen Bonds	Water Bonds	MWRA Water Debt	MWRA Loan	Sewer Bonds	Total	
23. FY 23 Chapter 90	DPW	SE		\$300,000.00					\$596,005.00							\$896,005.00	
24. Signalization Upgrades at Select Locations	P&D	SE		\$300,000.00												\$300,000.00	
25. Zoning Codification	P&D	SE	\$50,000.00													\$50,000.00	
26. Concrete and Decorative Utility Pole Replacement	DPW	UE		\$60,000.00												\$60,000.00	
27. Downtown Broadway Water & Sewer Utilities	DPW	UE												\$1,630,000.00		\$1,630,000.00	
28. Lead Service Replacement Program	DPW	UE											\$300,000.00			\$300,000.00	
29. Neighborhood Flooding Relief	DPW	UE													\$500,000.00	\$500,000.00	
30. Replacement of Electrical Load Center Enclosures	DPW	UE	\$30,000.00													\$30,000.00	
31. Stormwater Management Plan	DPW	UE	\$125,000.00													\$125,000.00	
32. City Fiber Repairs and Maintenance	IT	UE		\$70,000.00												\$70,000.00	
TOTAL			\$398,000.00	\$4,484,459.00	\$450,000.00	\$3,300,000.00		\$3,000,000.00	\$596,005.00		\$2,726,500.00		\$300,000.00	\$1,630,000.00	\$500,000.00	\$17,384,964.00	
Total General Obligations Bonds					\$2,726,500.00												
Water Enterprise Bonds					\$0.00												
Sewer Enterprise Bonds					\$500,000.00												
Total General Obligations Bonds					\$3,226,500.00												
MWRA Water Assistance Note paid by the Water Enterprise Fund					\$300,000.00												
MWRA Note paid by the Sewer Enterprise Fund					\$1,630,000.00												
Retained Earnings from Enterprise Funds					\$0.00												
Pay-As-You Go as part of FY Operating Budget					\$398,000.00												
Free Cash					\$4,484,459.00												
Misc Grants					\$450,000.00												
School Stabilization					\$3,300,000.00												
MWRA Grant					\$0.00												
General Stablization					\$3,000,000.00												
Chapter 90					\$596,005.00												
Total Capital Improvement Program					\$17,384,964.00												

2024 Projects

Project Description	Dept	Area	Operating Budget	Free Cash	Grant Funding					Enterprise Funding	General Fund Borrowing	Water Fund Borrowing		Sewer Fund Borrowing		Total
					Misc. Grant	School Stabilization	MWRA Grant	General Stablization	Chapter 90	Retained Earnings	Gen Bonds	Water Bonds	MWRA Water Debt	MWRA Loan	Sewer Bonds	
1. Public Building Renovations	DPW	BF		\$600,000.00												\$600,000.00
2. Municipal Water Meter Replacement	DPW	EA		\$300,000.00												\$300,000.00
3. Desktop Replacement	IT	EA	\$25,000.00													\$25,000.00
4. SCBA Replacement	Fire	EA		\$500,000.00												\$500,000.00
5. Annual Park Project	P&D	PO		\$350,000.00	\$400,000.00											\$750,000.00
6. Garden Cemetery - Phase 5	P&D	PO		\$450,000.00												\$450,000.00
7. Veteran's Field Design Phase	Schools	PO				\$240,000.00										\$240,000.00
8. Williams School Playground	Schools	PO				\$1,500,000.00										\$1,500,000.00
9. Camera Replacement and Additions	Police	PS		\$39,000.00												\$39,000.00
10. Marked Cruisers	Police	PS		\$200,000.00												\$200,000.00
11. Portable Radios	Police	PS		\$105,459.00												\$105,459.00
12. Unmarked Cruiser	Police	PS			\$50,000.00											\$50,000.00
13. Concrete and Decorative Utility Pole Replacement	DPW	UE		\$60,000.00												\$60,000.00
14. Lead Service Replacement Program	DPW	UE											\$300,000.00			\$300,000.00
15. Neighborhood Flooding Relief	DPW	UE													\$500,000.00	\$500,000.00
16. Park Square Infrastructure	DPW	UE									\$1,500,000.00	\$1,000,000.00			\$1,500,000.00	\$4,000,000.00
17. Stormwater Management Plan	DPW	UE	\$125,000.00													\$125,000.00
TOTAL			\$150,000.00	\$2,604,459.00	\$450,000.00	\$1,740,000.00					\$1,500,000.00	\$1,000,000.00	\$300,000.00		\$2,000,000.00	\$9,744,459.00
Total General Obligations Bonds					\$1,500,000.00											
Water Enterprise Bonds					\$1,000,000.00											
Sewer Enterprise Bonds					\$2,000,000.00											
Total General Obligations Bonds					\$4,500,000.00											
MWRA Water Assistance Note paid by the Water Enterprise Fund					\$300,000.00											
MWRA Note paid by the Sewer Enterprise Fund					\$0.00											
Retained Earnings from Enterprise Funds					\$0.00											
Pay-As-You Go as part of FY Operating Budget					\$150,000.00											
Free Cash					\$2,604,459.00											
Misc Grants					\$450,000.00											
School Stabilization					\$1,740,000.00											
MWRA Grant					\$0.00											
General Stablization					\$0.00											
Chapter 90					\$0.00											
Total Capital Improvement Program					\$9,744,459.00											

2025 Projects					Grant Funding					Enterprise Funding	General Fund Borrowing	Water Fund Borrowing		Sewer Fund Borrowing		
Project Description	Dept	Area	Operating Budget	Free Cash	Misc. Grant	School Stabilization	MWRA Grant	General Stablization	Chapter 90	Retained Earnings	Gen Bonds	Water Bonds	MWRA Water Debt	MWRA Loan	Sewer Bonds	Total
1. Public Buildings Renovations	DPW	BF		\$600,000.00												\$600,000.00
2. Municipal Water Meter Replacement	DPW	EA		\$300,000.00												\$300,000.00
3. Replace Squad 1/ Prime Mover	Fire	EA	\$75,000.00													\$75,000.00
4. Annual Park Project	P&D	PO		\$350,000.00	\$400,000.00											\$750,000.00
5. Garden Cemetery - Phase 6	P&D	PO		\$365,000.00												\$365,000.00
6. CHS Carter Field Replacement (Design Phase)	Schools	PO				\$250,000.00										\$250,000.00
7. Veterans Field Bleachers, Press Box, Entry	Schools	PO				\$2,400,000.00										\$2,400,000.00
8. Camera Replacement and Additions	Police	PS		\$39,000.00												\$39,000.00
9. Marked Cruisers	Police	PS		\$200,000.00												\$200,000.00
10. Portable Radios	Police	PS		\$105,459.00												\$105,459.00
11. Unmarked Cruisers	Police	PS			\$50,000.00											\$50,000.00
12. Concrete and Decorative Utility Pole Replacement	DPW	UE		\$60,000.00												\$60,000.00
13. Lead Service Replacement Program	DPW	UE											\$300,000.00			\$300,000.00
14. Neighborhood Flooding Relief	DPW	UE													\$550,000.00	\$550,000.00
15. Fourth/Cherry/Winnisimmet/Division	DPW	UE									\$1,500,000.00	\$1,000,000.00			\$1,500,000.00	\$4,000,000.00
TOTAL			\$75,000.00	\$2,019,459.00	\$450,000.00	\$2,650,000.00					\$1,500,000.00	\$1,000,000.00	\$300,000.00		\$2,050,000.00	\$10,044,459.00
Total General Obligations Bonds					\$1,500,000.00											
Water Enterprise Bonds					\$1,000,000.00											
Sewer Enterprise Bonds					\$2,050,000.00											
Total General Obligations Bonds					\$4,550,000.00											
MWRA Water Assistance Note paid by the Water Enterprise Fund					\$300,000.00											
MWRA Note paid by the Sewer Enterprise Fund					\$0.00											
Retained Earnings from Enterprise Funds					\$0.00											
Pay-As-You Go as part of FY Operating Budget					\$75,000.00											
Free Cash					\$2,019,459.00											
Misc Grants					\$450,000.00											
School Stabilization					\$2,650,000.00											
MWRA Grant					\$0.00											
General Stablization					\$0.00											
Chapter 90					\$0.00											
Total Capital Improvement Program					\$10,044,459.00											

2026 Projects					Grant Funding					Enterprise Funding	General Fund Borrowing	Water Fund Borrowing		Sewer Fund Borrowing		
Project Description	Dept	Area	Operating Budget	Free Cash	Misc. Grant	School Stabilization	MWRA Grant	General Stablization	Chapter 90	Retained Earnings	Gen Bonds	Water Bonds	MWRA Water Debt	MWRA Loan	Sewer Bonds	Total
1. Public Parking Garage	DPW	BF									\$5,000,000.00					\$5,000,000.00
2. Municipal Water Meter Replacement	DPW	EA		\$300,000.00												\$300,000.00
3. Annual Park Project	P&D	PO		\$350,000.00	\$400,000.00											\$750,000.00
4. CHS Carter Field Replacement	Schools	PO				\$2,500,000.00										\$2,500,000.00
5. Design Phase: MCB (Merritt Park) Ballfield	Schools	PO				\$190,000.00										\$190,000.00
6. Camera Replacement and Additions	Police	PS		\$39,000.00												\$39,000.00
7. Marked Cruisers	Police	PS		\$200,000.00												\$200,000.00
8. Portable Radios	Police	PS		\$105,459.00												\$105,459.00
9. Unmarked Cruiser	Police	PS			\$50,000.00											\$50,000.00
10. Concrete and Decorative Utility Pole Replacement	DPW	UE		\$60,000.00												\$60,000.00
11. Lead Service Replacement Program	DPW	UE											\$300,000.00			\$300,000.00
TOTAL				\$1,054,459.00	\$450,000.00	\$2,690,000.00					\$5,000,000.00		\$300,000.00			\$9,494,459.00
Total General Obligations Bonds					\$5,000,000.00											
Water Enterprise Bonds					\$0.00											
Sewer Enterprise Bonds					\$0.00											
Total General Obligations Bonds					\$5,000,000.00											
MWRA Water Assistance Note paid by the Water Enterprise Fund					\$300,000.00											
MWRA Note paid by the Sewer Enterprise Fund					\$0.00											
Retained Earnings from Enterprise Funds					\$0.00											
Pay-As-You Go as part of FY Operating Budget					\$0.00											
Free Cash					\$1,054,459.00											
Misc Grants					\$450,000.00											
School Stabilization					\$2,690,000.00											
MWRA Grant					\$0.00											
General Stablization					\$0.00											
Chapter 90					\$0.00											
Total Capital Improvement Program					\$9,494,459.00											

