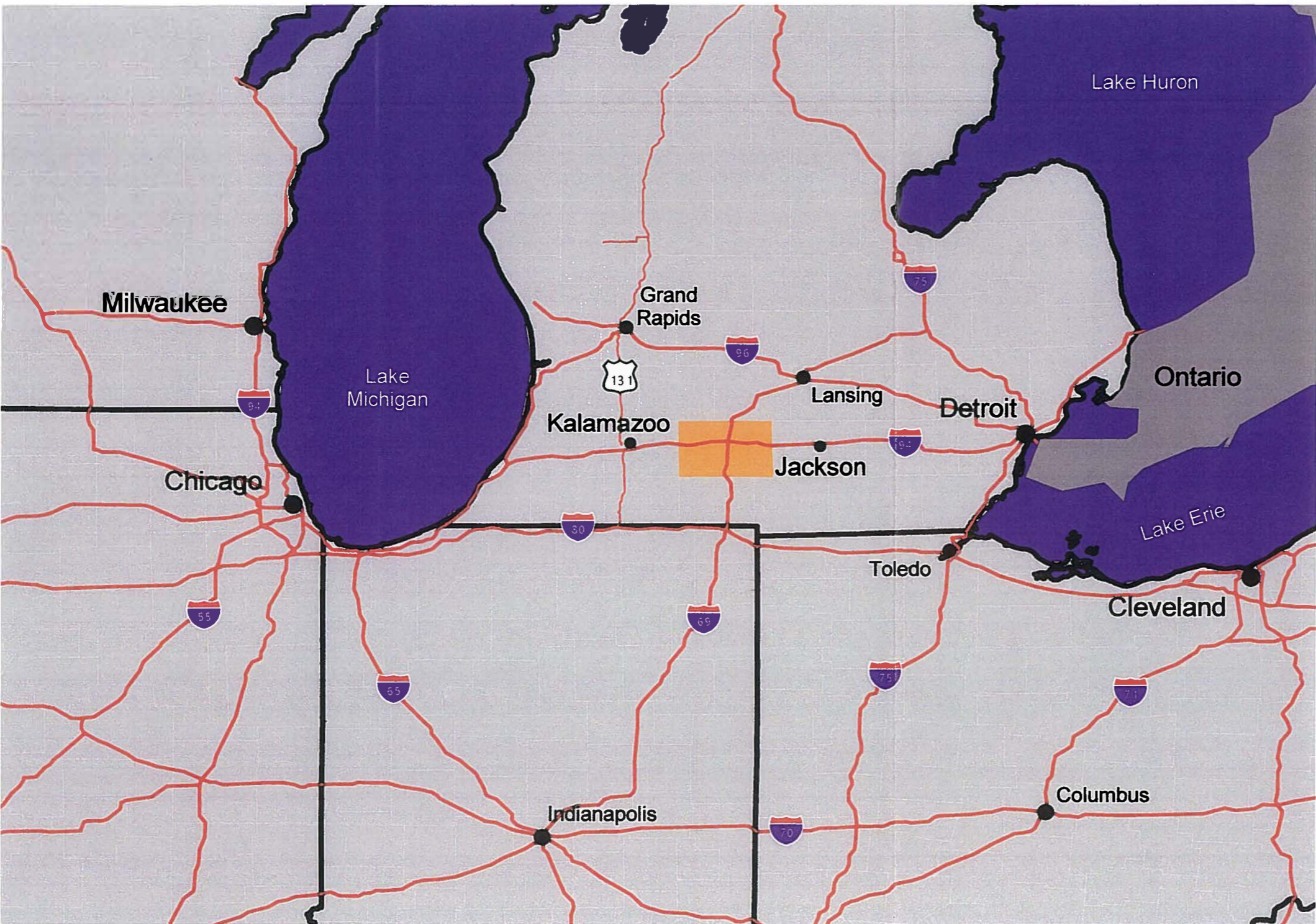


Calhoun County, MI and surrounding region



	Interstates/Highways
	Calhoun County
	US County Boundaries
	US states
	Canada
	Lakes



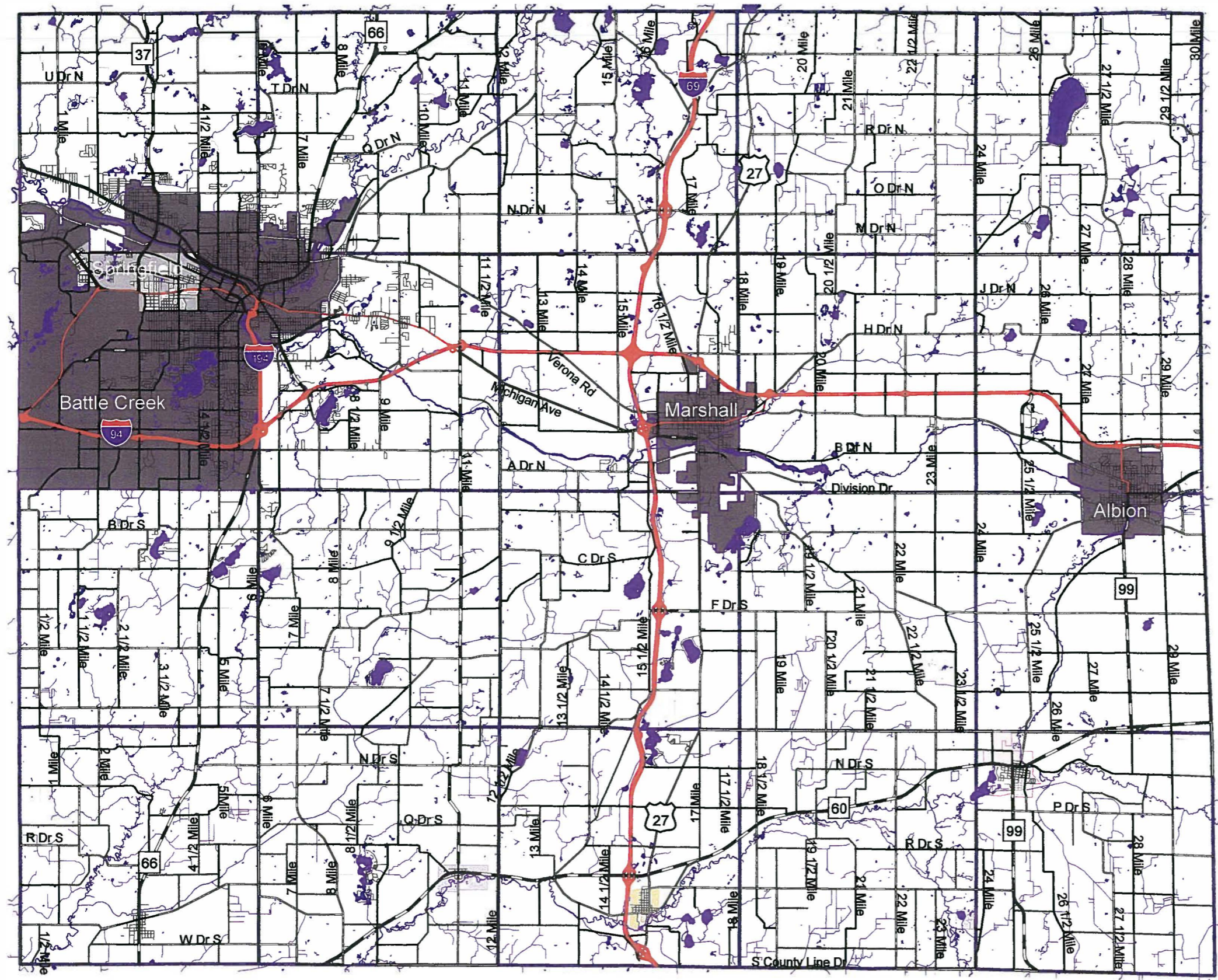
Maps produced for the County Master Plan series by Cardinal Geographic Consulting using original data and data from the Michigan Center for Geographic Information, the Calhoun County Equalization Department, and the participating townships, villages, and cities of Calhoun County.

Maps produced April 2004



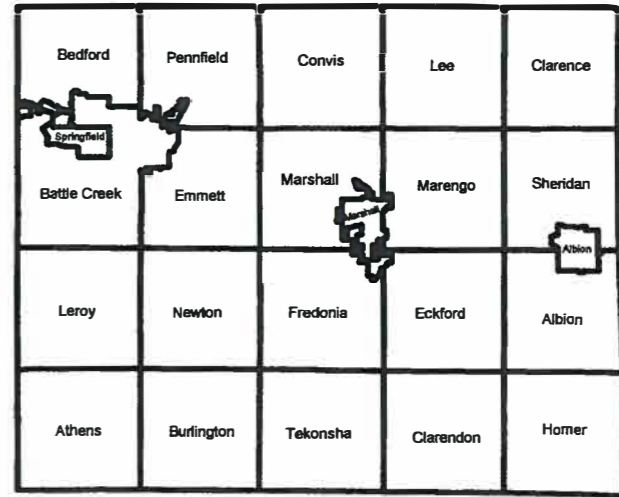
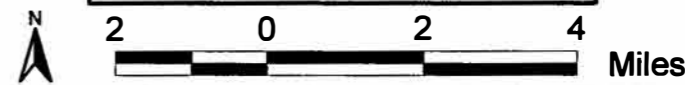
County Basemap

Calhoun County, MI



- Alley
- City Road Paved
- Class "A" Road
- County Primary
- County Road Double Seal
- County Road Paved
- County Road Unpaved
- I-94 Business Loop
- Interstate Highway
- Michigan State Highway
- Residential Road Paved
- Residential Road Dirt

- Cities
- Athens Village
- Burlington Village
- Homer Village
- Tekonsha Village
- Union City
- Township Boundaries
- Lakes, Ponds, Rivers, & Drains



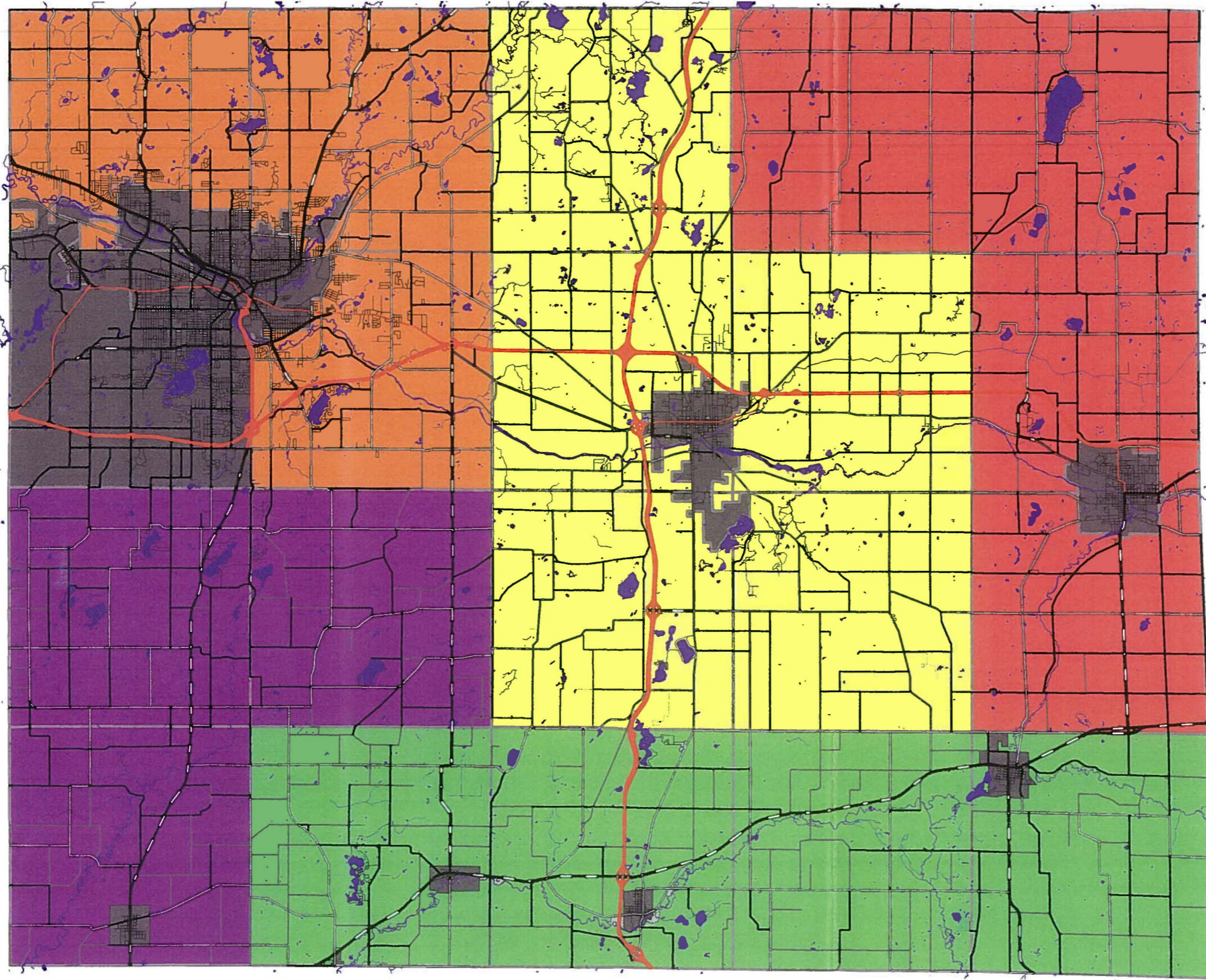
Maps produced for the County Master Plan series by Cardinal Geographic Consulting using original data and data from the Michigan Center for Geographic Information, the Calhoun County Equalization Department, and the participating townships, villages, and cities of Calhoun County.

Maps produced April 2004

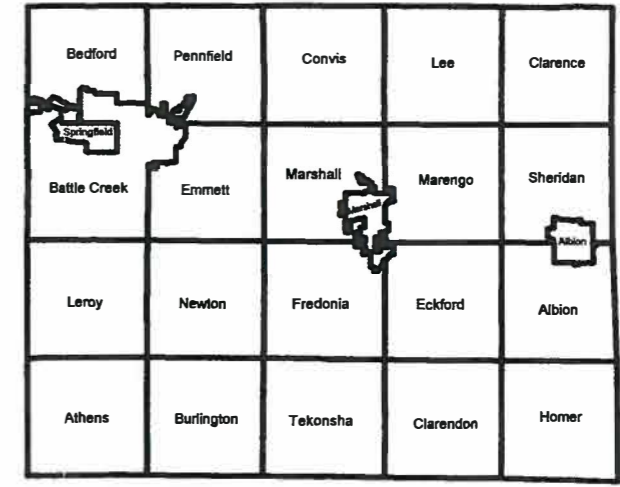


Planning Neighborhoods

Calhoun County, MI



	Alley
	City Road Paved
	Class "A" Road
	County Primary
	County Road Double Seal
	County Road Paved
	County Road Unpaved
	I-94 Business Loop
	Interstate Highway
	Michigan State Highway
	Residential Road Paved
	Residential Road Dirt
	Marshall Area neighborhood
	East/Northeast neighborhood
	Southern neighborhood
	Southwest Rural neighborhood
	Urban neighborhood
	Cities/Villages
	Township Boundaries
	Lakes, Ponds, and Rivers



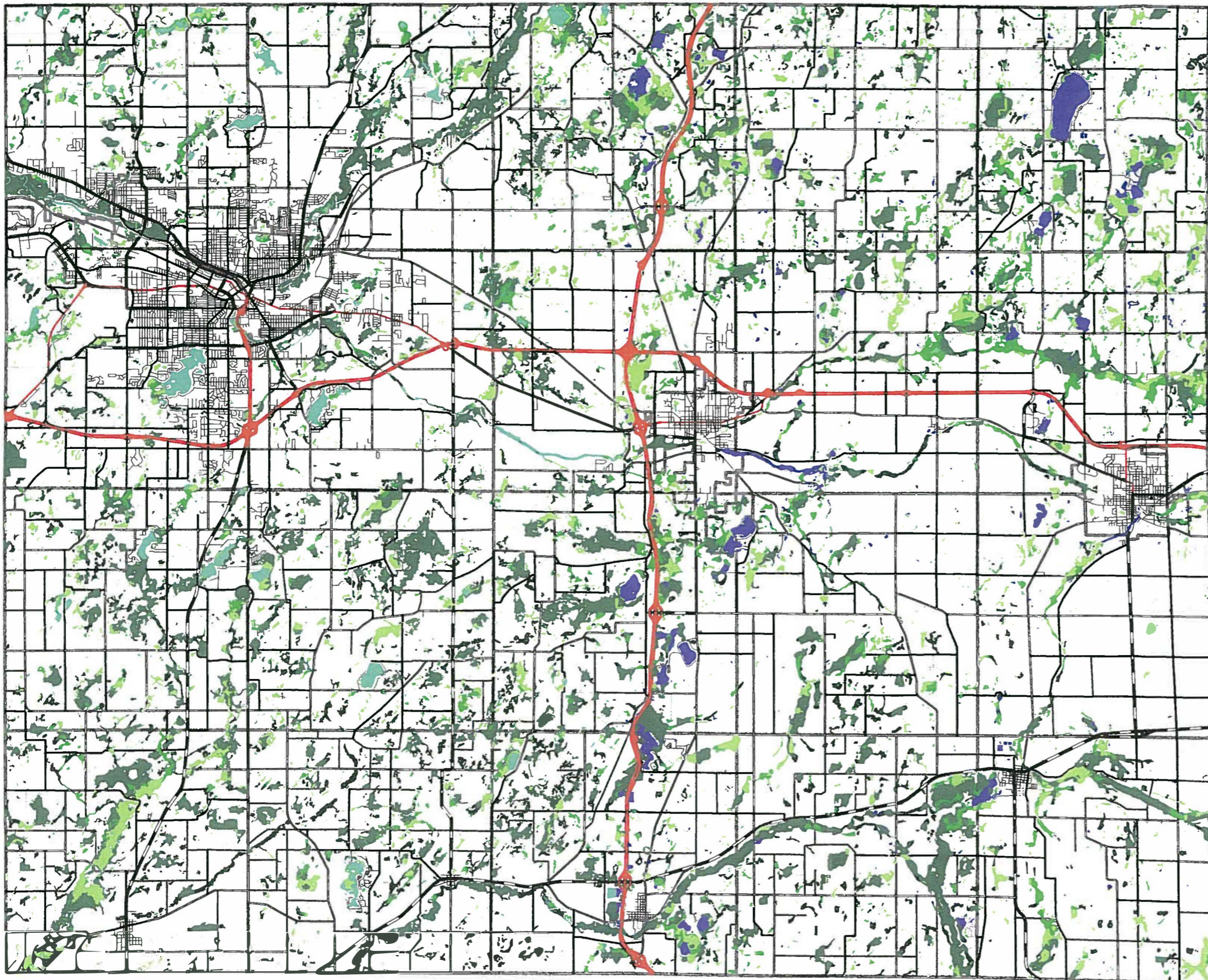
Maps produced for the County Master Plan series by Cardinal Geographic Consulting using original data and data from the Michigan Center for Geographic Information, the Calhoun County Equalization Department, and the participating townships, villages, and cities of Calhoun County.

Maps produced April 2004

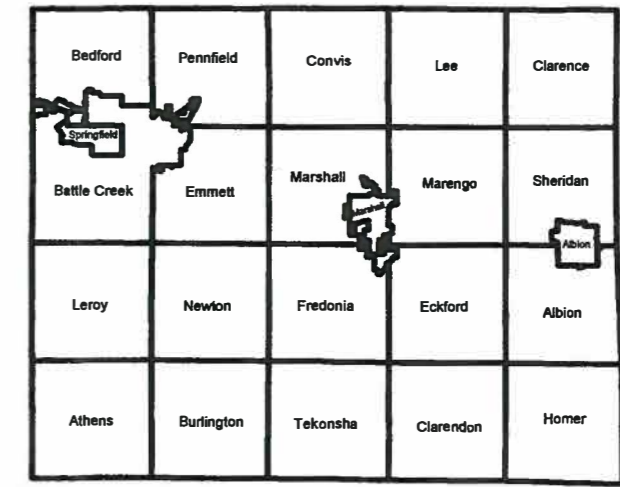


Wetland Areas

Calhoun County, MI



	Alley
	City Road Paved
	Class "A" Road
	County Primary
	County Road Double Seal
	County Road Paved
	County Road Unpaved
	I-94 Business Loop
	Interstate Highway
	Michigan State Highway
	Residential Road Paved
	Residential Road Dirt
	Aquatic Bed
	Emergent
	Moss-Lichen
	Scrub-Shrub
	Forested
	Open Water/Unknown Bottom
	Streambed
	Unconsolidated Bottom
	Rock Bottom
	Unconsolidated Shore
	Rocky Shore
	Beach/Bar
	Flat
	Township Boundaries



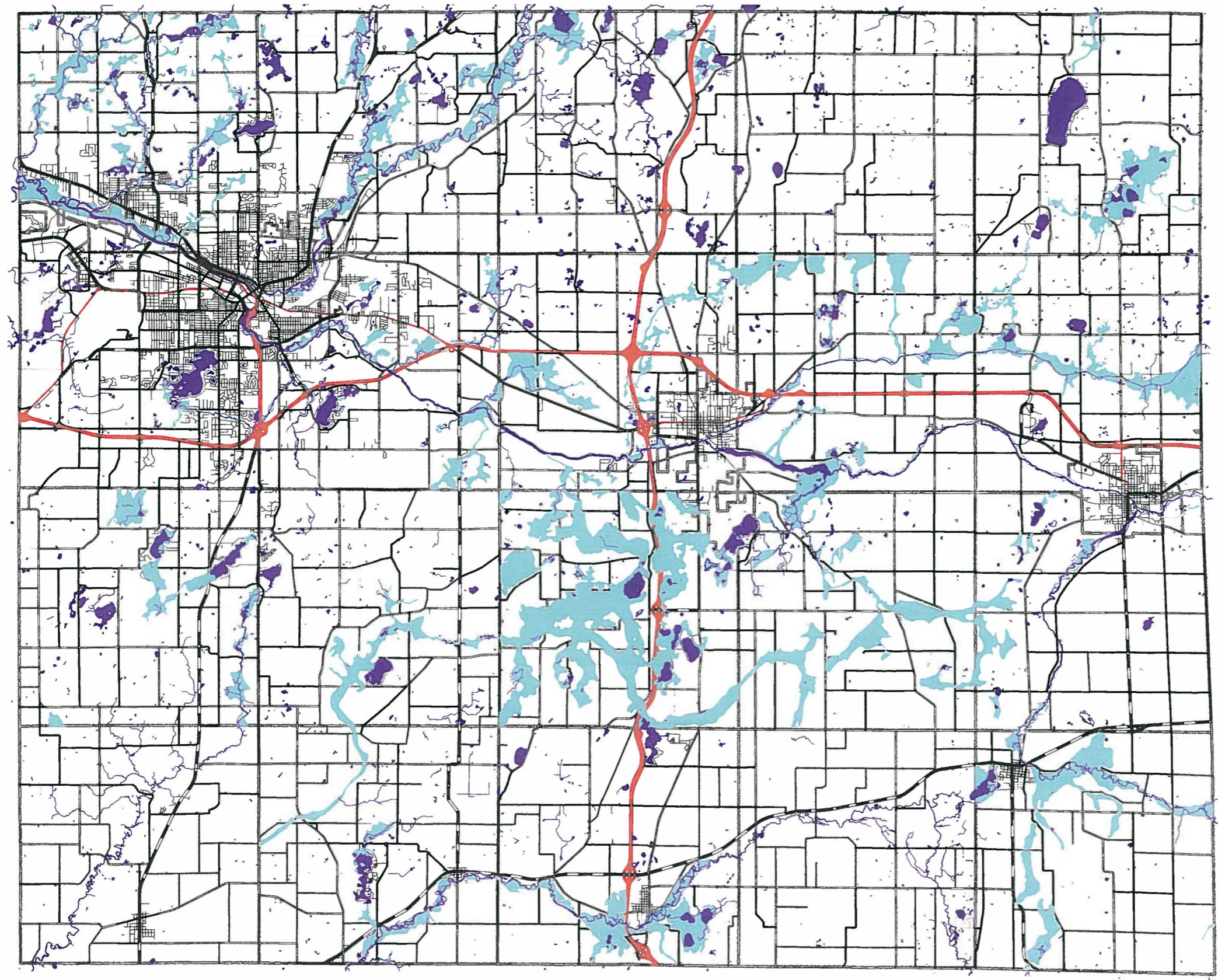
Maps produced for the County Master Plan series by Cardinal Geographic Consulting using original data and data from the Michigan Center for Geographic Information, the Calhoun County Equalization Department, and the participating townships, villages, and cities of Calhoun County.

Maps produced April 2004



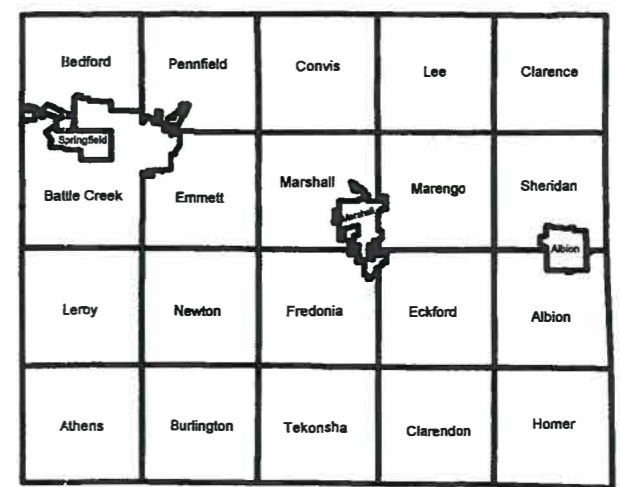
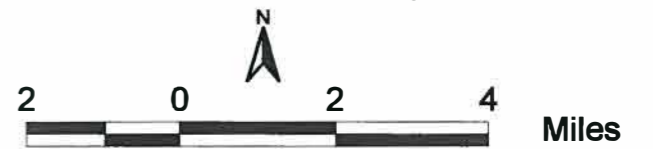
FEMA Floodplain Areas

Calhoun County, MI



- Alley
- City Road Paved
- Class "A" Road
- County Primary
- County Road Double Seal
- County Road Paved
- County Road Unpaved
- I-94 Business Loop
- Interstate Highway
- Michigan State Highway
- Residential Road Paved
- Residential Road Dirt
- FEMA Floodplain
- Township Boundaries
- Lakes, Ponds, and Rivers

Note: Athens, Lee, And Clarendon Townships do not participate in the FEMA Q3 program



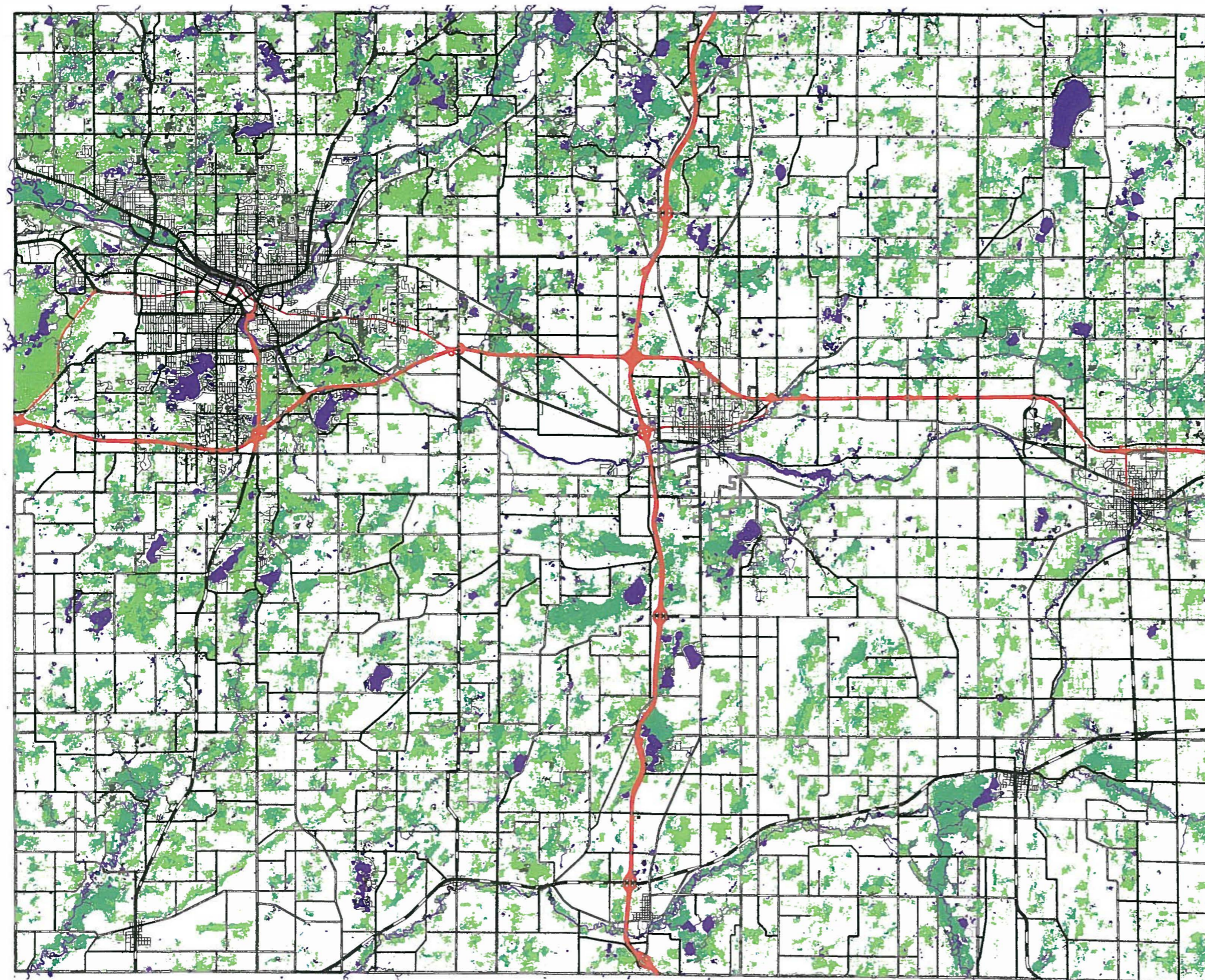
Maps produced for the County Master Plan series by Cardinal Geographic Consulting using original data and data from the Michigan Center for Geographic Information, the Calhoun County Equalization Department, and the participating townships, villages, and cities of Calhoun County.

Maps produced April 2004



Woodland Areas

Calhoun County, MI

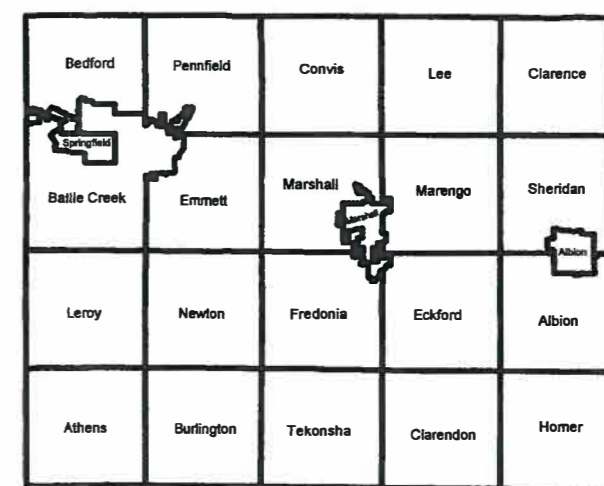


Legend:

- Alley
- City Road Paved
- Class "A" Road
- County Primary
- County Road Double Seal
- County Road Paved
- County Road Unpaved
- I-94 Business Loop
- Interstate Highway
- Michigan State Highway
- Residential Road Paved
- Residential Road Dirt

Woodland Areas

- Deciduous
- Evergreen
- Mixed
- Wooded Wetland
- Township Boundaries
- Lakes, Ponds, and Rivers



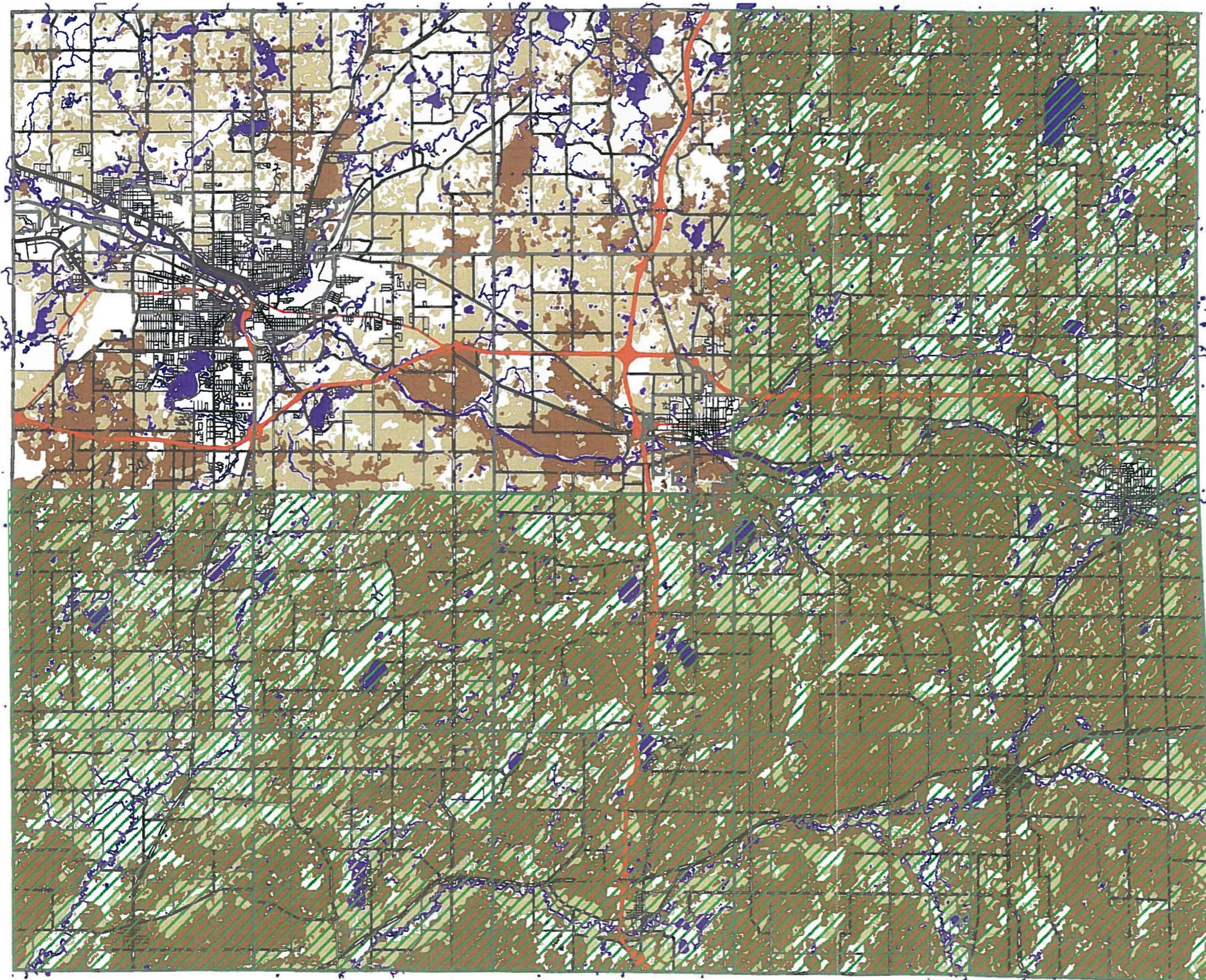
Maps produced for the County Master Plan series by Cardinal Geographic Consulting using original data and data from the Michigan Center for Geographic Information, the Calhoun County Equalization Department, and the participating townships, villages, and cities of Calhoun County.

Maps produced April 2004



Prime Farmland

Calhoun County, MI

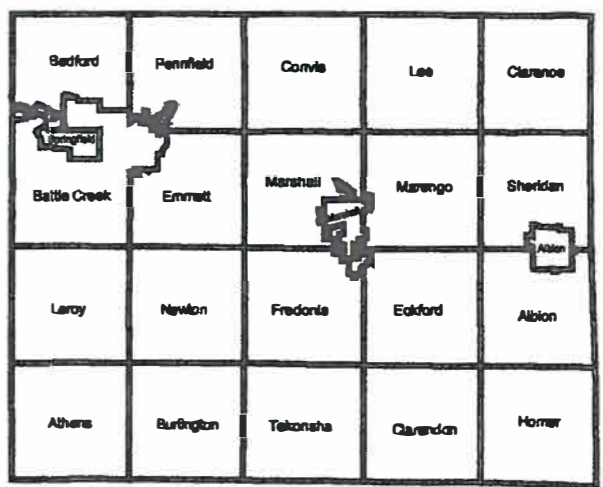


Legend

- Alley
- City Road Paved
- Class "A" Road
- County Primary
- County Road Double Seal
- County Road Paved
- County Road Unpaved
- I-94 Business Loop
- Interstate Highway
- Michigan State Highway
- Residential Road Paved
- Residential Road Dirt

Farmland Areas

- Land Capability Class II (Highest Quality)
- Land Capability Class III
- Farmland Preservation Area
- Township Boundaries
- Lakes, Ponds, and Rivers



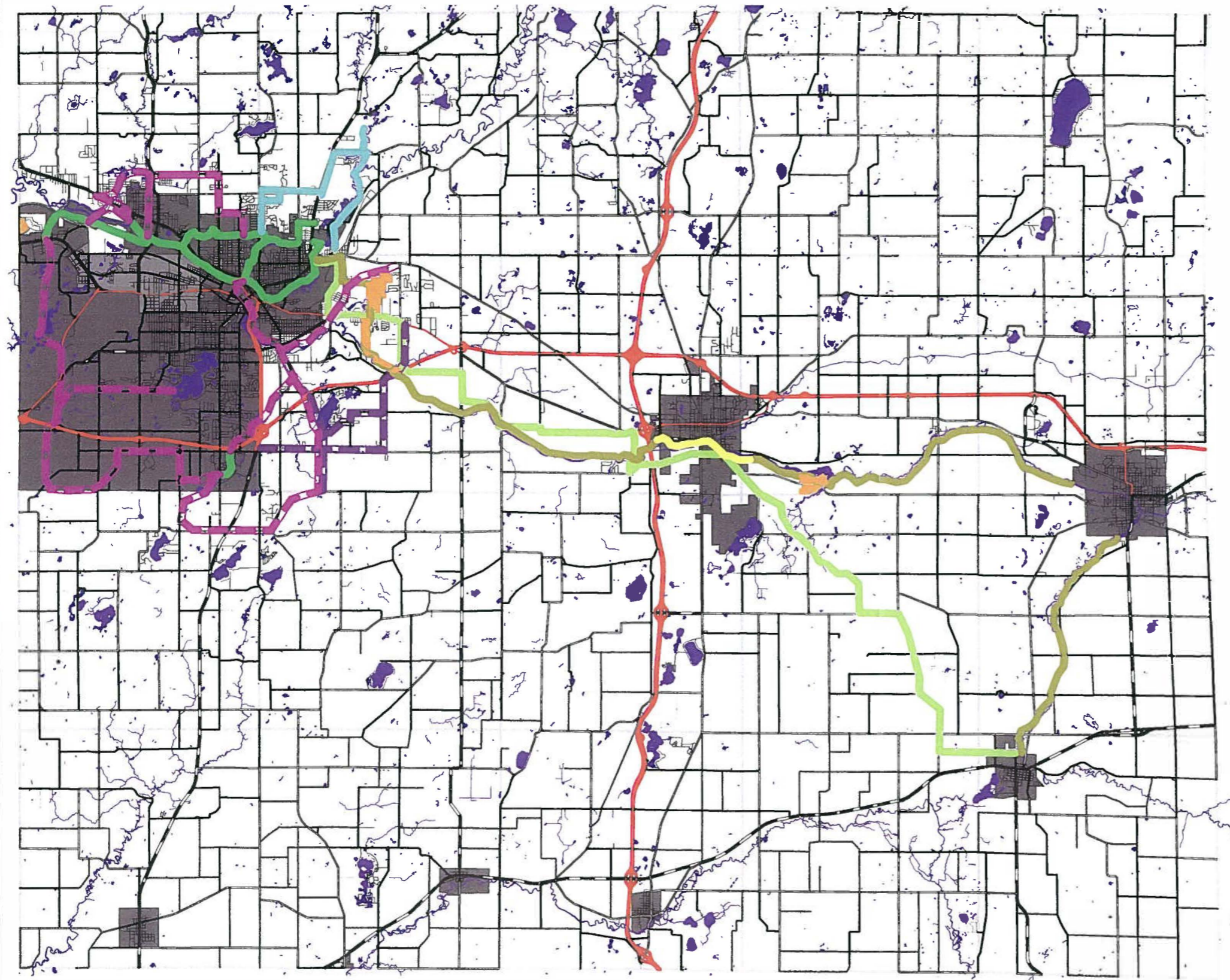
Maps produced for the County Master Plan series by Cardinal Geographic Consulting using original data and data from the Michigan Center for Geographic Information, the Calhoun County Equalization Department, and the participating townships, villages, and cities of Calhoun County.

Maps produced April 2004



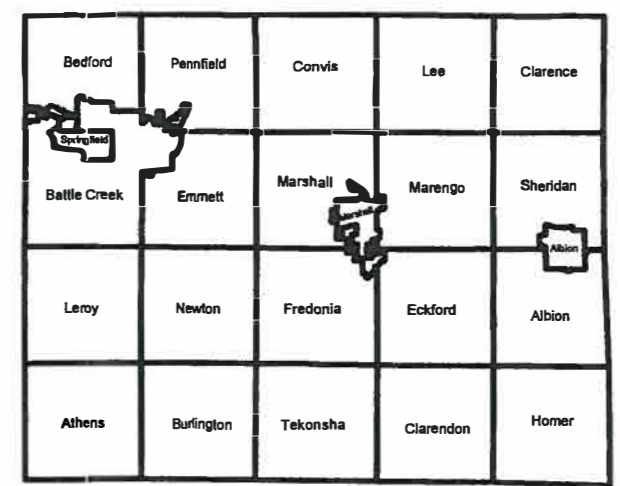
Non-Motorized Trails

Calhoun County, MI



	Battle Creek Bike Path		Alley
	Battle Creek Linear Trailway		City Road Paved
	Proposed County Trail		Class "A" Road
	Emmett Twp Bike Path		County Primary
	Marshall River Walk		County Road Double Seal
	North Country Trail		County Road Paved
	Proposed Pennfield Twp Trail		County Road Unpaved
			I-94 Business Loop
			Interstate Highway
			Michigan State Highway
			Residential Road Paved
			Residential Road Dirt

	County Parks
	Cities & Villages
	Township Boundaries
	Lakes, Ponds, Rivers, & Drains

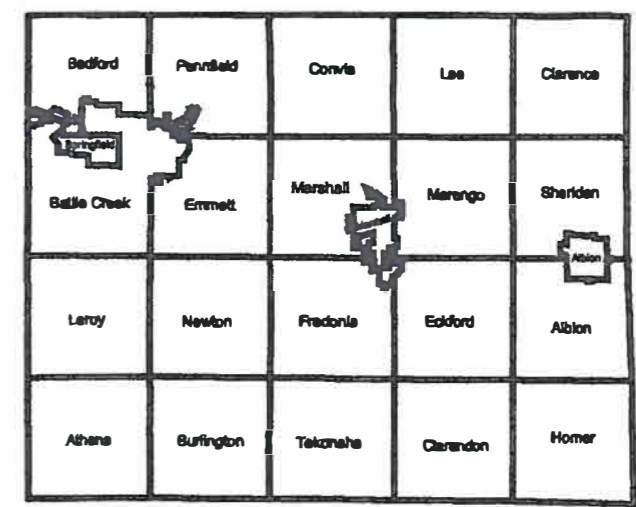
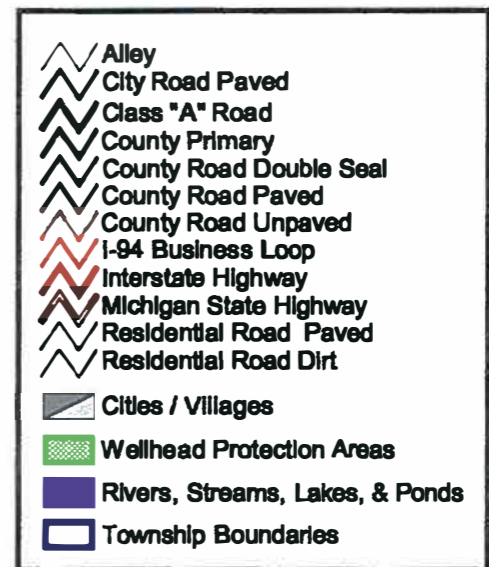
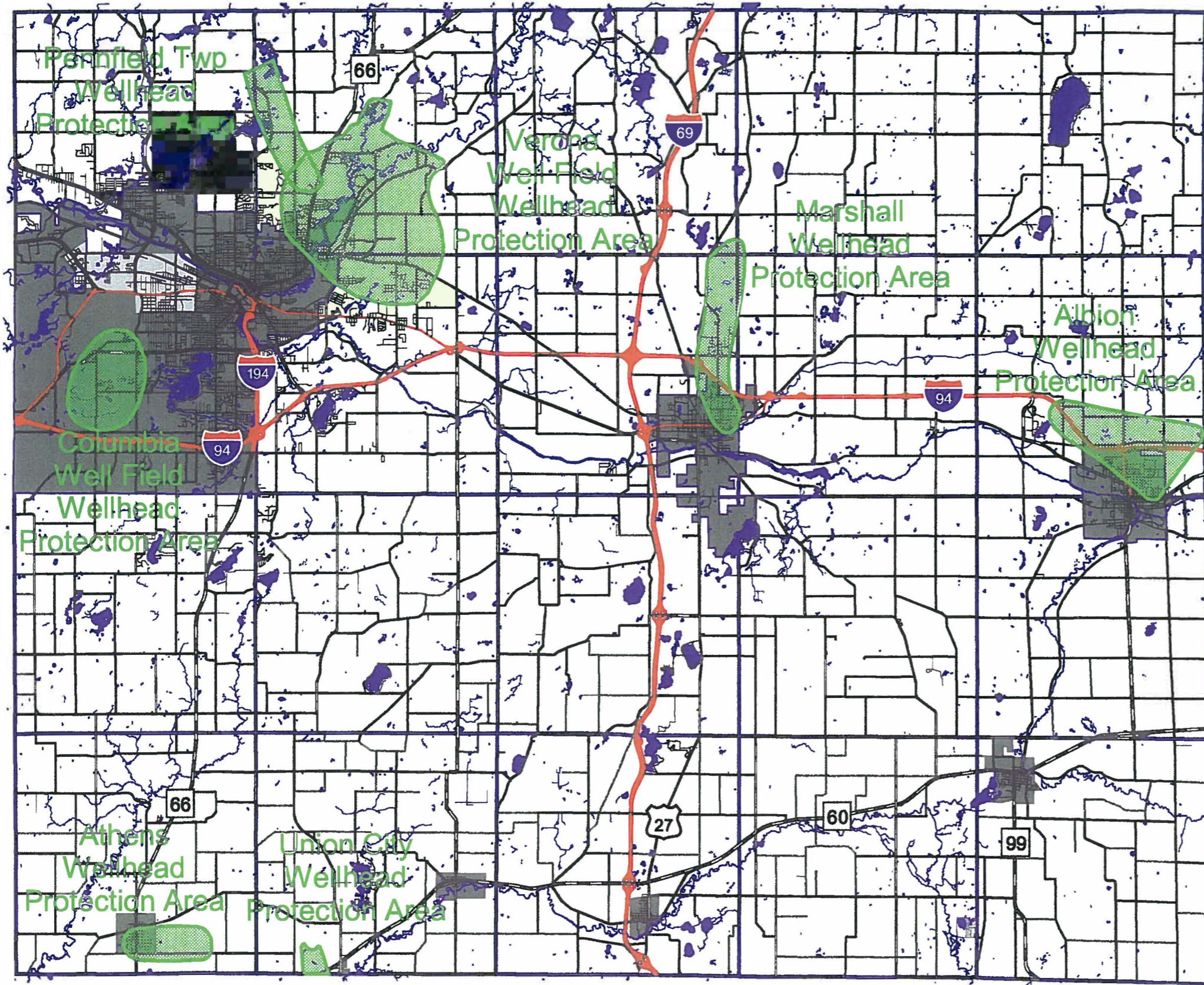


Maps produced for the County Master Plan series by Cardinal Geographic Consulting using original data and data from the Michigan Center for Geographic Information, the Calhoun County Equalization Department, and the participating townships, villages, and cities of Calhoun County.



Designated Wellhead Protection Areas

Calhoun County, MI



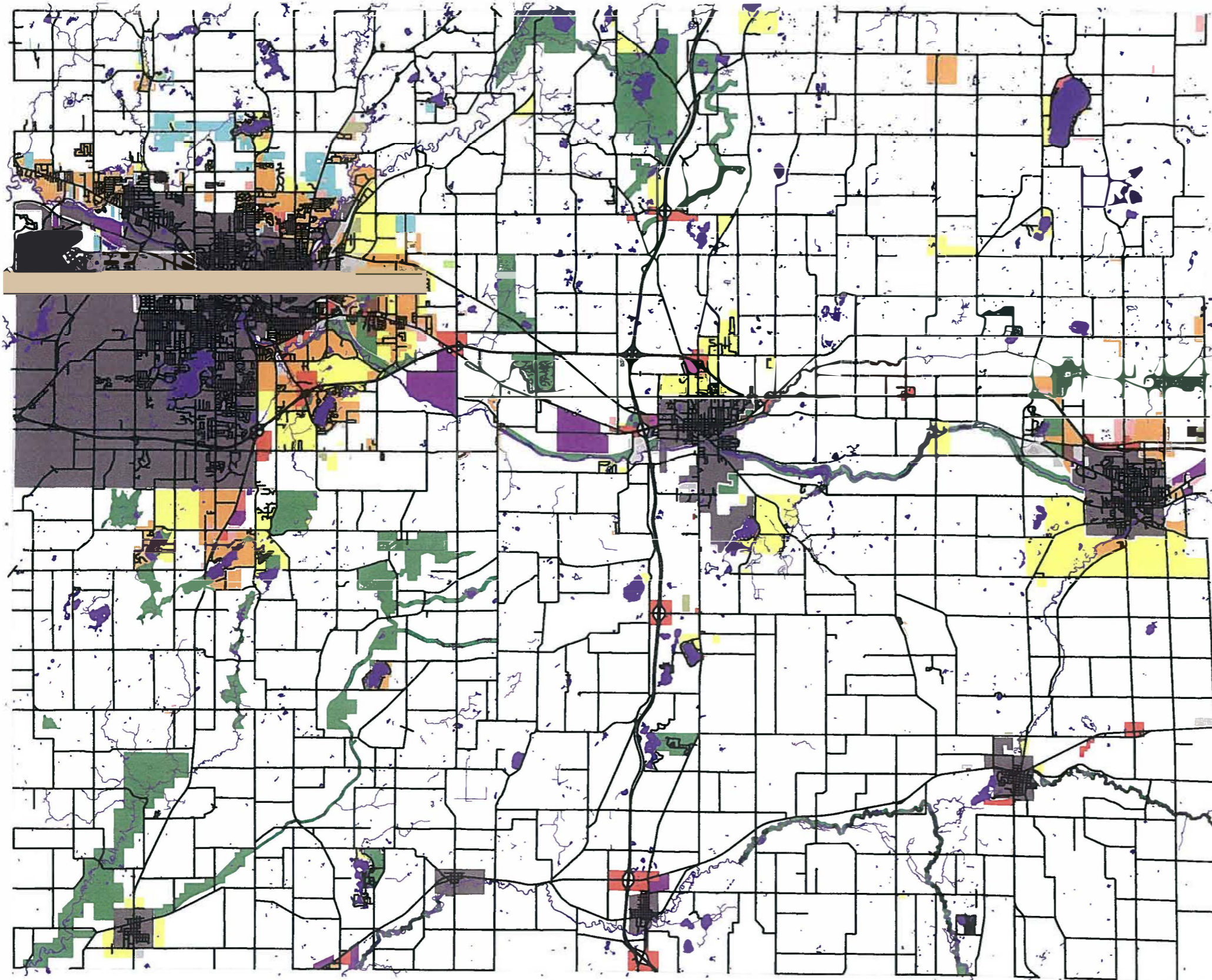
Maps produced for the County Master Plan series by Cardinal Geographic Consulting using original data and data from the Michigan Center for Geographic Information, the Calhoun County Equalization Department, and the participating townships, villages, and cities of Calhoun County.

Maps produced April 2004

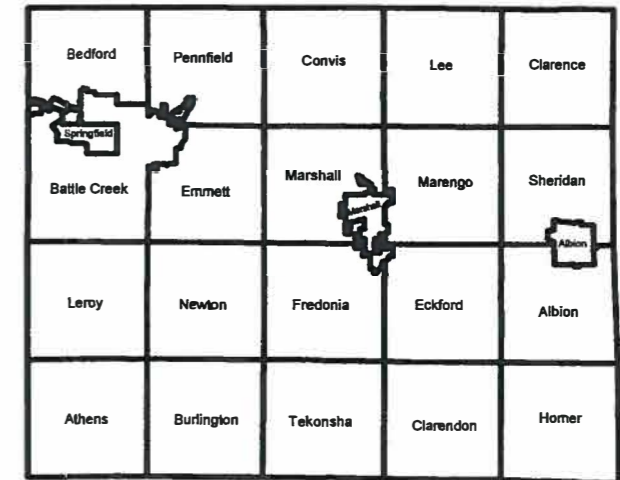


Local Zoning

Calhoun County, MI



- Roads
- Agricultural
- Agricultural Business District
- Local/Neighborhood Commercial
- Regional/Highway Commercial
- Light Industrial
- Heavy Industrial
- Low Density Residential
- Medium Density Residential
- High Density Residential
- Multi-Family Residential
- Mobile Home Park
- Open Space
- PA425
- Split Zoned
- Township Boundaries
- Cities and Villages
- Lakes, Ponds, and Rivers



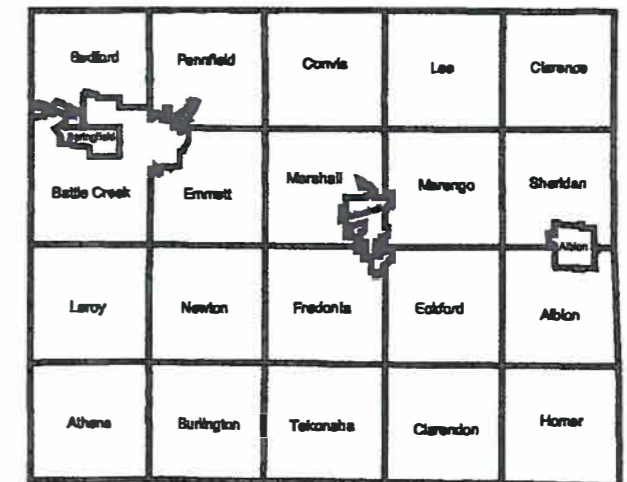
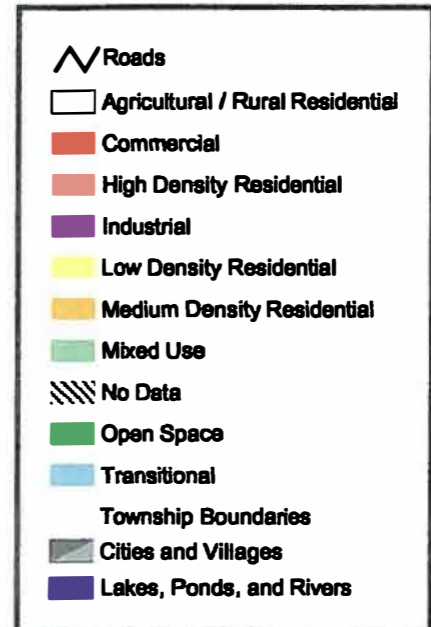
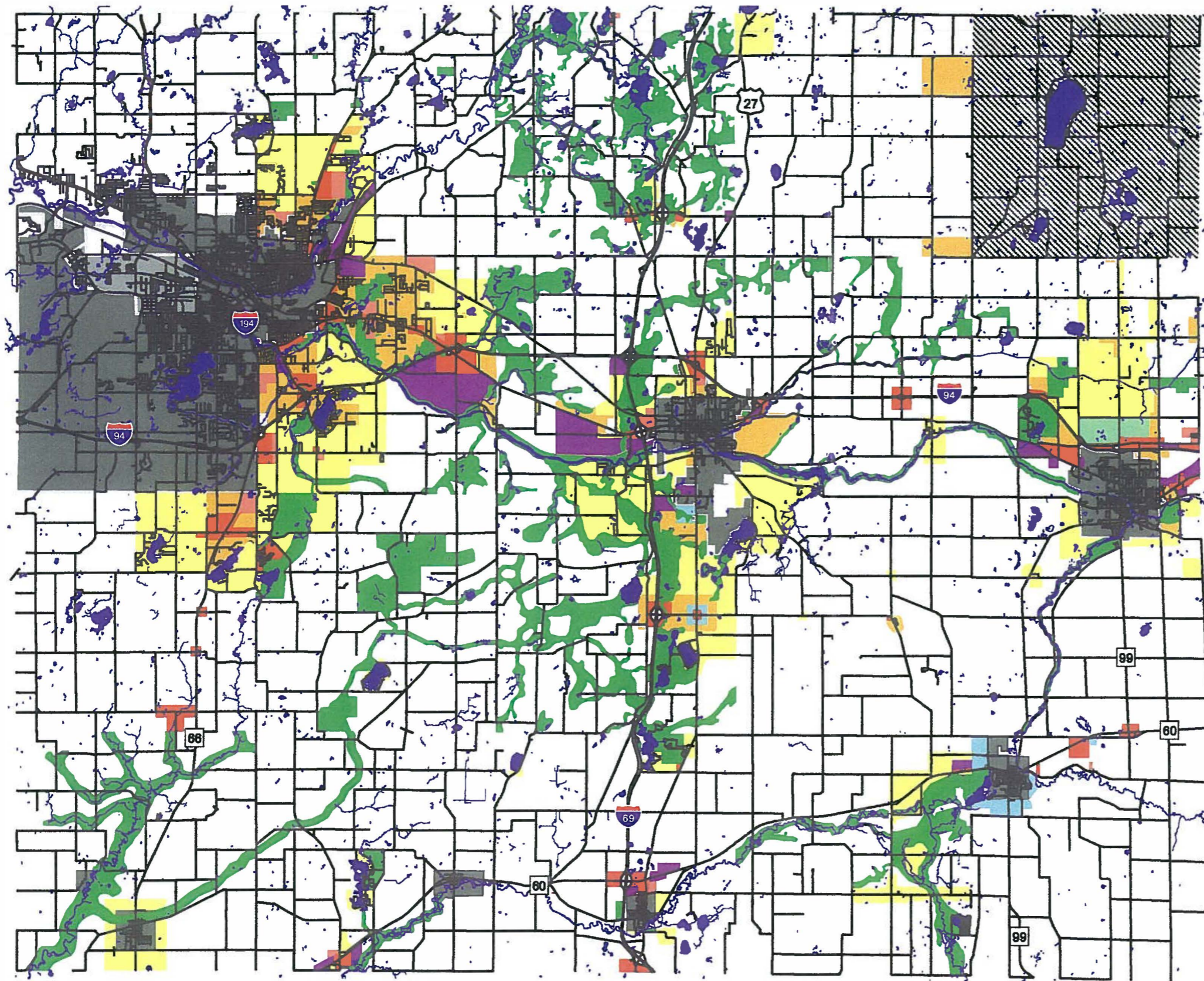
Maps produced for the County Master Plan series by Cardinal Geographic Consulting using original data and data from the Michigan Center for Geographic Information, the Calhoun County Equalization Department, and the participating townships, villages, and cities of Calhoun County.

Maps produced April 2004



Local Land Use

Calhoun County, MI



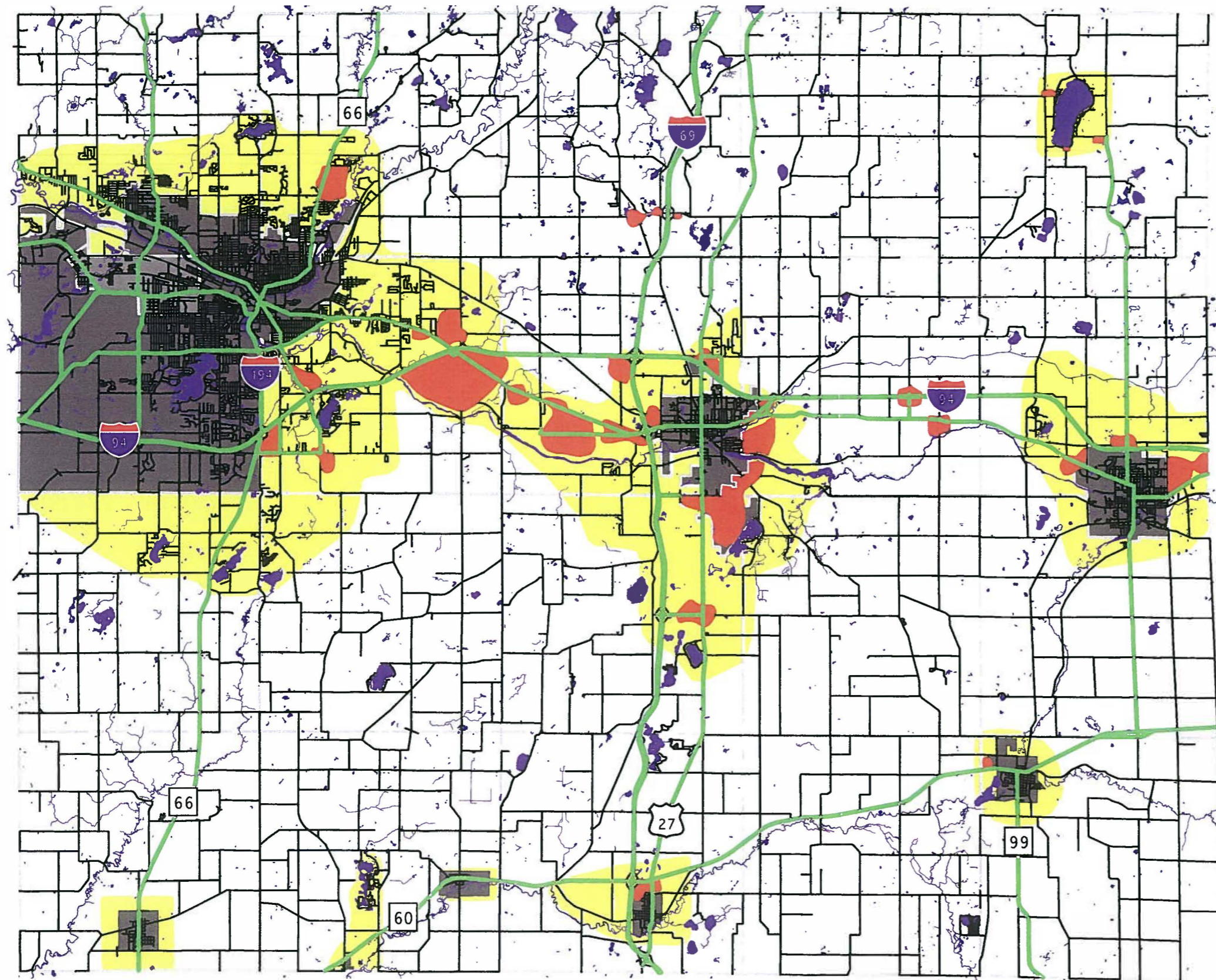
Maps produced for the County Master Plan series by Cardinal Geographic Consulting using original data and data from the Michigan Center for Geographic Information, the Calhoun County Equalization Department, and the participating townships, villages, and cities of Calhoun County.






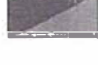
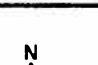
Maps produced April 2004

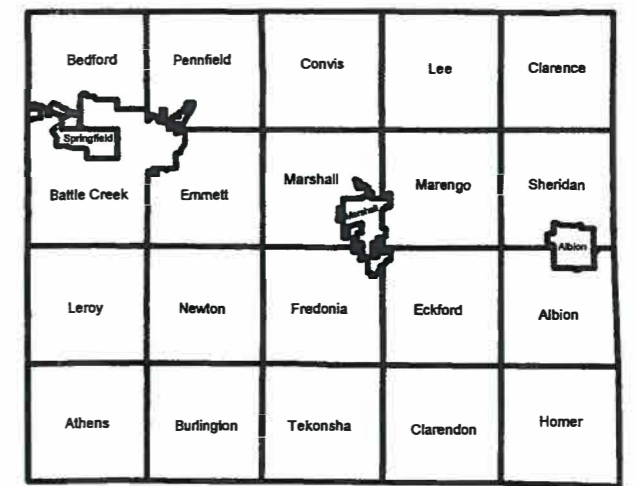


Development Corridors

Calhoun County, MI



-  Service Area Development Corridors
-  Roads
-  Growth Boundary
-  Commercial / Industrial Areas
-  Lakes, Ponds, and Rivers
-  Township Boundaries
-  Cities and Villages



Maps produced for the County Master Plan series by Cardinal Geographic Consulting using original data and data from the Michigan Center for Geographic Information, the Calhoun County Equalization Department, and the participating townships, villages, and cities of Calhoun County.

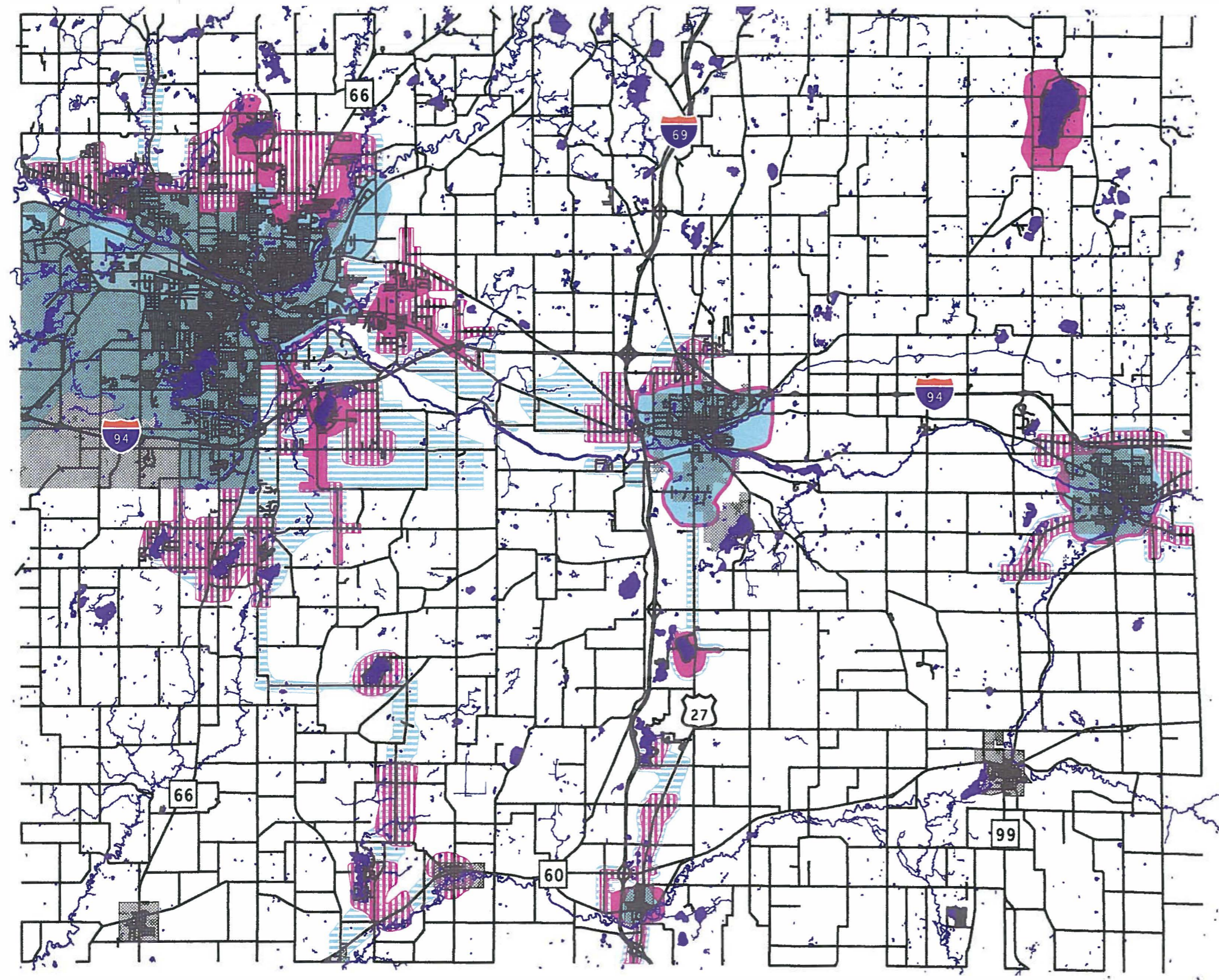
Map produced October 2004



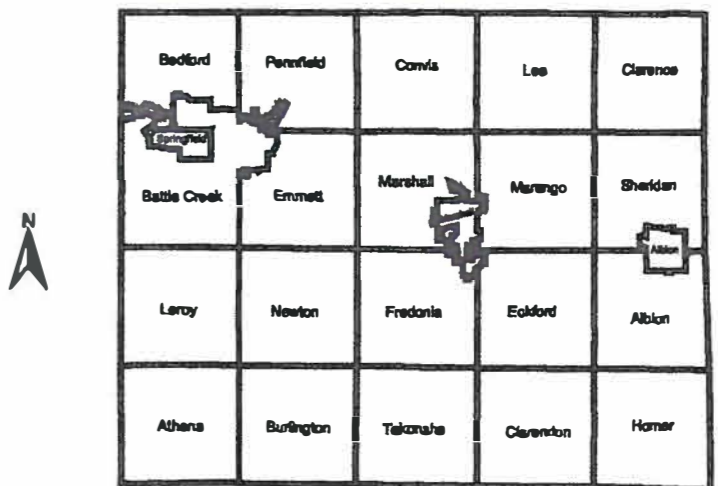
Utility Service Areas

1995 Infrastructure Master Plan

Calhoun County, MI



-  Existing Water Service Areas
-  Existing Sewer Service Areas
-  Proposed Sewer Service Areas
-  Proposed Water Service Areas
-  Lakes, Ponds, and Rivers
-  Township Boundaries
-  Cities and Villages
-  Roads



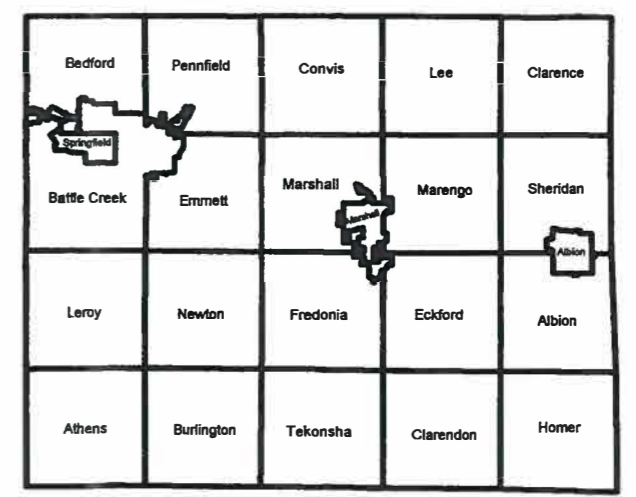
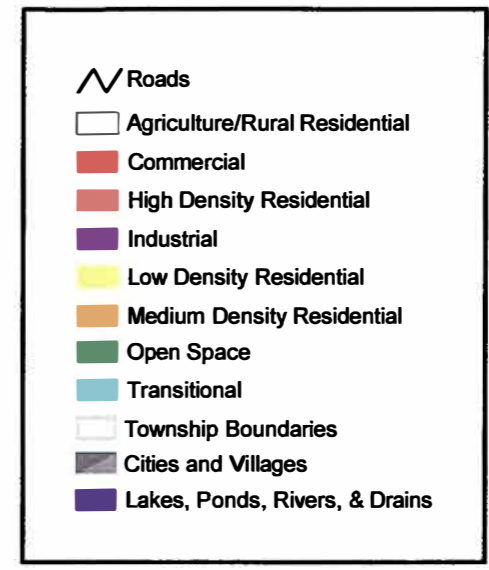
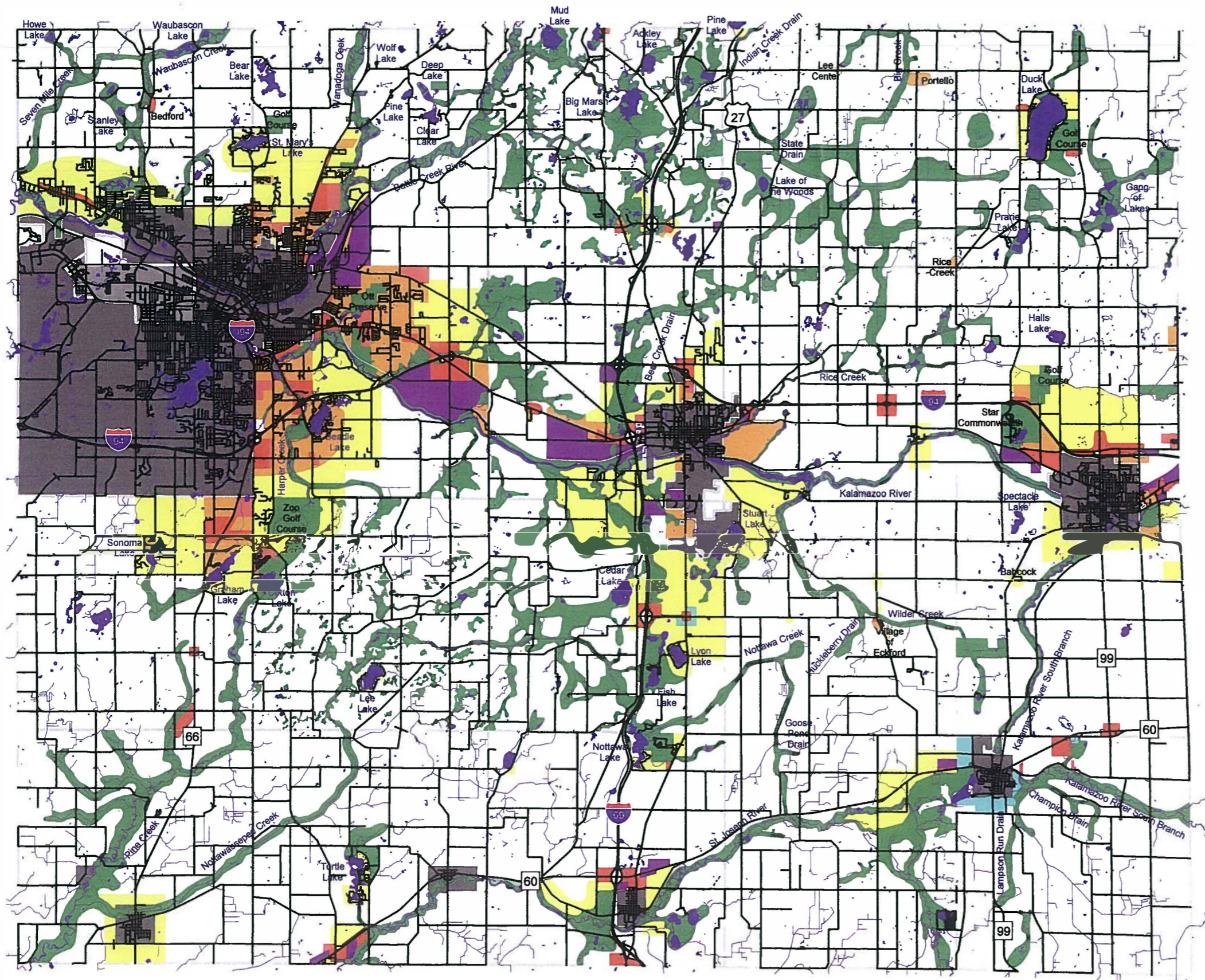
Maps produced for the County Master Plan series by Cardinal Geographic Consulting using original data and data from the Michigan Center for Geographic Information, the Calhoun County Equalization Department, and the participating townships, villages, and cities of Calhoun County.

Maps produced April 2004



County Master Land Use Plan

Calhoun County, MI



Maps produced for the County Master Plan series by Cardinal Geographic Consulting using original data and data from the Michigan Center for Geographic Information, the Calhoun County Equalization Department, and the participating townships, villages, and cities of Calhoun County.

Map produced October 2004

