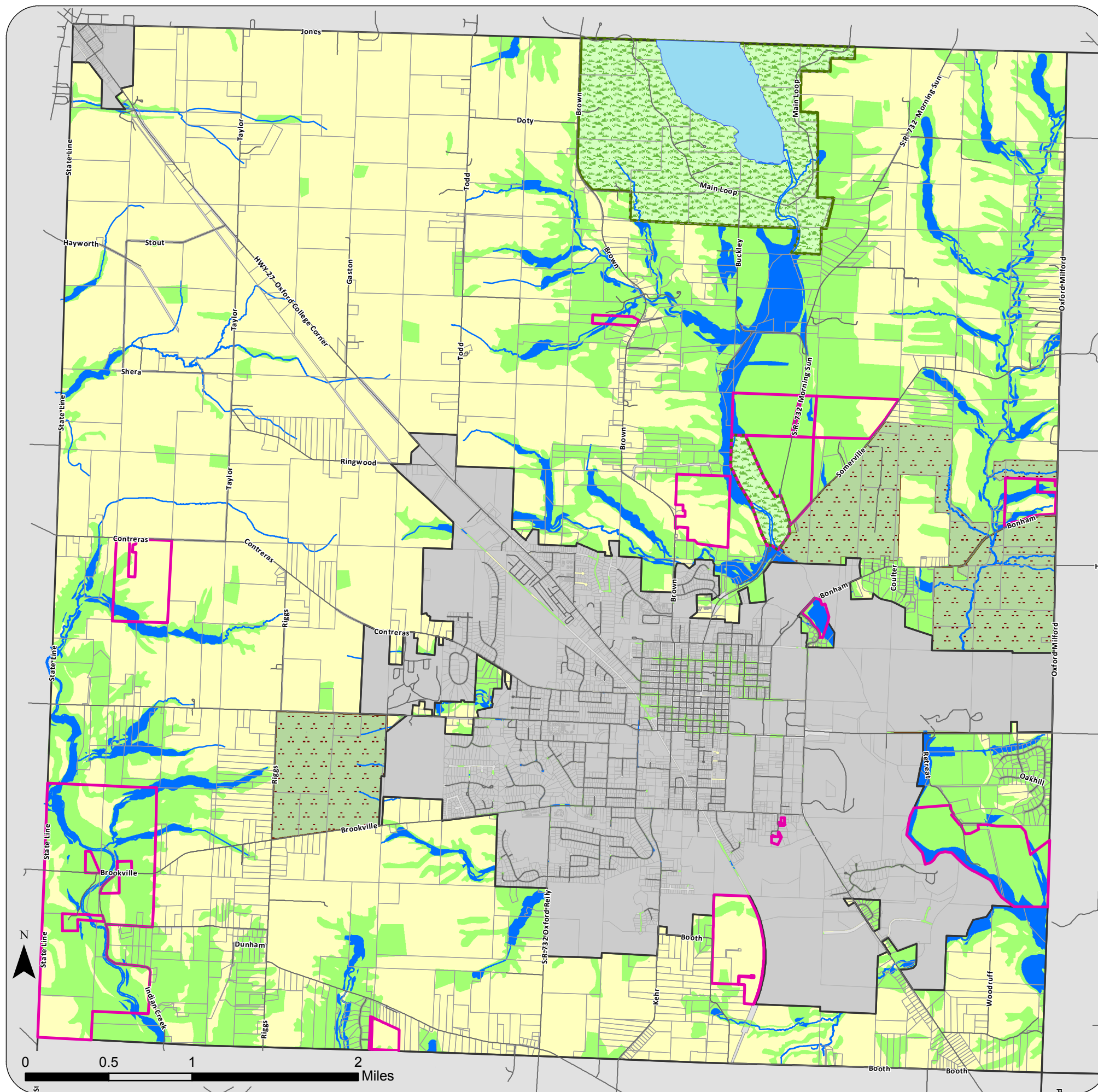


Figure 9-1 Oxford Township Future Land Use Plan

BUTLER COUNTY, OHIO



- Agriculture/Conservation Development Areas
- Environmentally Sensitive
- Unsuitable for Development
- State/County Parks
- Miami University Lands
- Private Conservation Easements
- Roadways
- Township Boundaries



Butler County
Department of Development
Planning Division
Butler County Administrative Center
130 High St, Hamilton, Ohio 45011