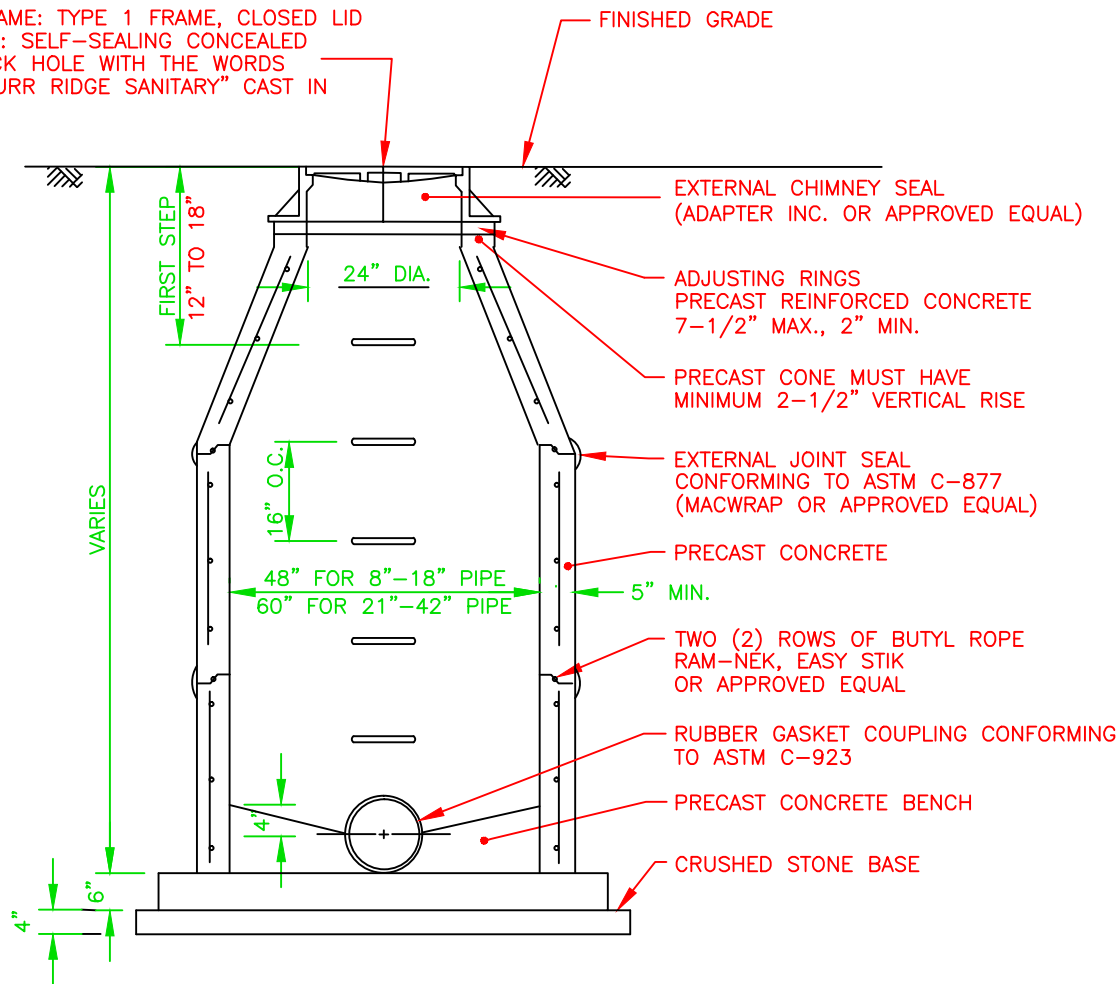


FRAME: TYPE 1 FRAME, CLOSED LID
 LID: SELF-SEALING CONCEALED
 PICK HOLE WITH THE WORDS
 "BURR RIDGE SANITARY" CAST IN



NOTES:

1. PRE-CAST REINFORCED CONCRETE RISERS, TOP AND BOTTOM SHALL CONFORM TO ASTM C-478.
2. MANHOLE STEPS SHALL BE POLYPROPYLENE COATED STEEL BAR, M.A. INDUSTRIES PS1-PF, AMERICAN STEP COMPANY ML-10, LANE P-10938, OR APPROVED EQUAL.
3. ALL LIFTING HOLES SHALL BE FILLED AND SEALED WITH MORTAR.

SANITARY SEWER MANHOLE

Project Name

Sanitary Manhole

General Notes

1. RIM IS TO BE CAST WITH THE WORDS "BURR RIDGE SANITARY" UNLESS OTHERWISE DIRECTED.
- 2.

Date

9-17-2012

Address

Village of Burr Ridge
 Engineering Department
 451 Commerce St.
 Burr Ridge, IL 60527