

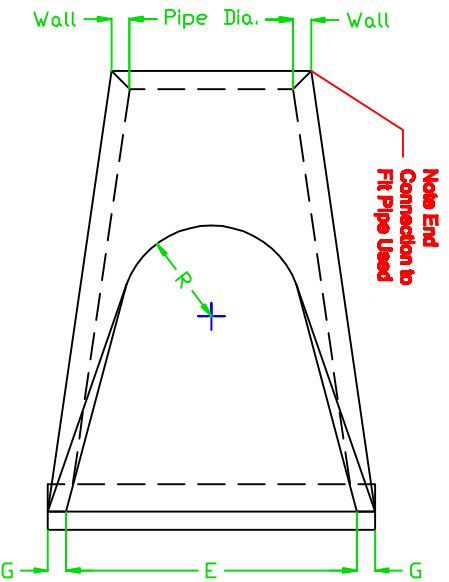
Project Name
 Precast Concrete Flared End Section

General Notes

1. PRECAST CONCRETE FLARED END SECTIONS SHALL CONFORM TO THE APPLICABLE REQUIREMENTS OF A S H T O M-170 CLASS III, WALL B REINFORCED CONCRETE PIPE.
2. PRECAST CONCRETE FLARED END SECTION FOR PIPE DIAMETER REQUIRED SHALL BE AS INDICATED ON THE DETAIL PLAN FOR EACH INDIVIDUAL INSTALLATION.
3. THE END BLOCK SHALL BE PLACED PRIOR TO THE INSTALLATION OF THE FLARED END SECTION. THE END BLOCK SHALL BE BACKFILLED IN ACCORDANCE WITH ART. 502.10 OF THE STANDARD SPECIFICATIONS, COST INCIDENTAL TO END SECTION.
4. ALL FLARED END SECTIONS 12" AND LARGER SHALL PROVIDE A PROTECTIVE GRATE.

Date
 5-30-2008

Address
 Village of Burr Ridge
 Engineering Department
 451 Commerce St.
 Burr Ridge, IL 60527



Pipe Dia. In.	Approx Wt. lbs	Wall	A	B	C	D	E	G	R	Slope X/Y		
12	530	2	4	24	48	87.5	72	87.5	24	24	9	3
15	740	2	6	27	46	73	30	24	11	3		3
18	990	2	9	27	46	73	36	24	12	3		3
21	1280	2	9	35	38	73	42	24	13	3		3
24	1520	3	9	43	30	73	48	36	14	3		3
27	1930	3	10	48	25	73	54	36	14	3		3
30	2190	3	12	54	19	73	60	36	15	3		3
33	3200	3	13	58	39	97	66	36	17	3		3
36	4100	4	15	63	34	97	72	48	20	3		3
42	5580	4	21	63	35	98	78	48	22	3		3
48	6550	5	24	72	26	98	84	60	22	3		3
54	8240	5	27	65	35	100	90	60	24	2.4		2.4
60	8730	6	35	60	39	99	96	60	*	2		2
66	10710	6	30	72	27	99	102	60	*	2		2
72	12520	7	36	78	21	99	108	72	*	1.86		1.86
78	14770	7	36	90	21	111	114	72	*	1.82		1.82
84	18160	8	36	90	21	111	120	72	*	1.5		1.5

* Radii as furnished by the manufacturer

