

ADDENDUM 1  
APPENDIX K LAND USE  
OFFICIAL ZONING MAP

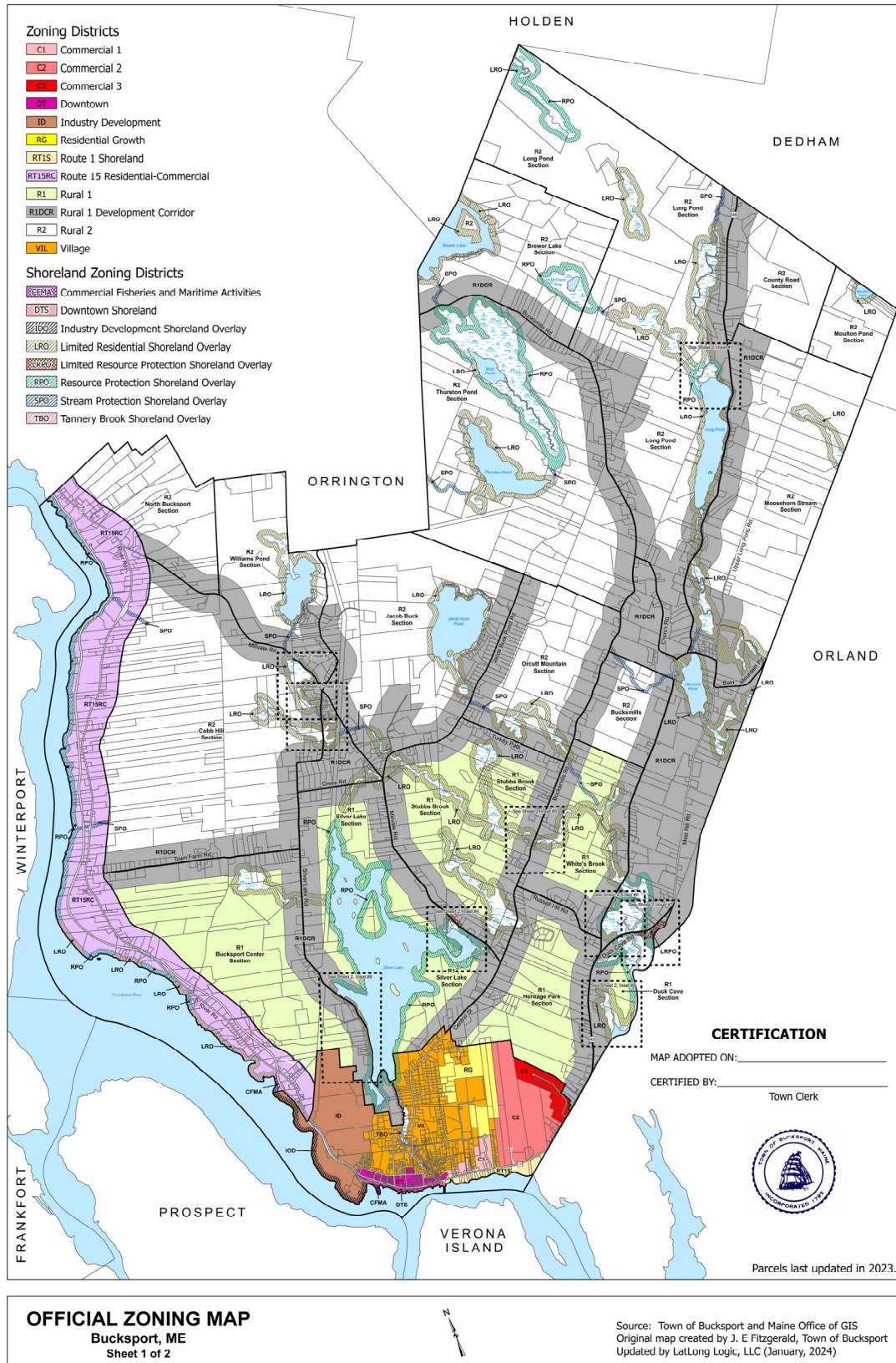
**1. AUTHENTICITY**

- 1.1 The Official Zoning Map of Bucksport, Maine, which is kept in the office of the town clerk, is comprised of two map sheets. Reduced-size copies of the map sheets are contained in Addendum 1. The map sheet copies in this addendum are for informational purposes only and not intended to be used for making any legal determination pertaining to zoning designations, zoning boundaries, dimensional requirements, lot size, or lot location.

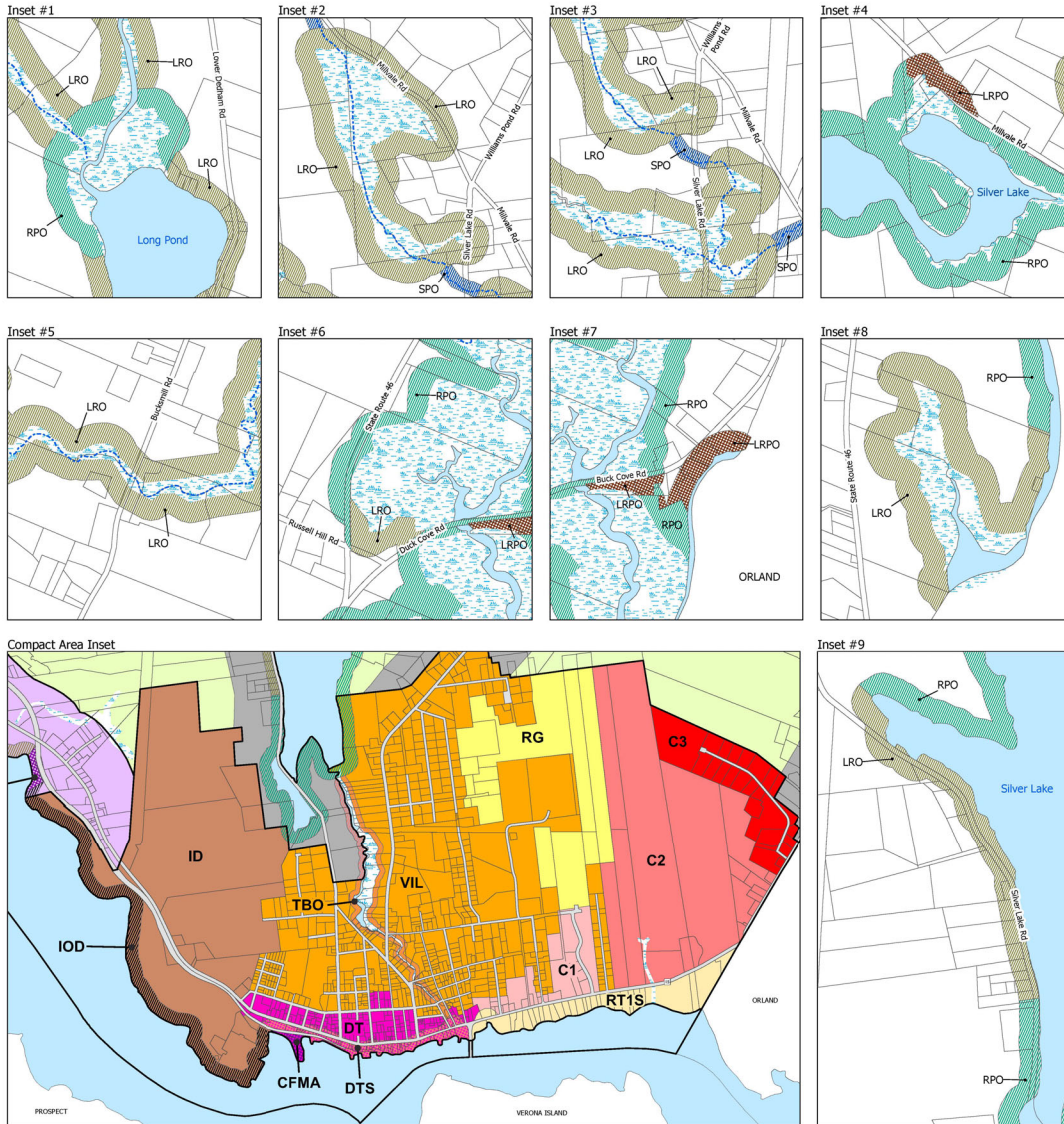
**2 MAP SHEETS**

- 2.1 Map sheet 1 is a reduced-size copy of Sheet 1 of the Official Zoning Map, which identifies zoning districts in all locations except for the densely-developed area of the town. Map sheet 1 is located on page 2 of Addendum 1.
- 2.2 Map sheet 2 is a reduced-size copy of Sheet 2 of the Official Zoning Map, which identifies zoning districts in the densely-developed area of the town, and also provides larger scale views of zoning details not easily viewed on Sheet 1 of the Official Zoning Map. Map sheet 2 is located on page 3 of Addendum 1.

Map Sheet 1



Map Sheet 2



- Zoning Districts**
- C1 Commercial 1
  - C2 Commercial 2
  - C3 Commercial 3
  - DT Downtown
  - ID Industry Development
  - RG Residential Growth
  - RT1S Route 1 Shoreland
  - RT1SRC Route 15 Residential-Commercial
  - R1 Rural 1
  - R1DCR Rural 1 Development Corridor
  - R2 Rural 2
  - VIL Village

- Shoreland Zoning Districts**
- CFMA Commercial Fisheries and Maritime Activities
  - DTS Downtown Shoreland
  - IDSO Industry Development Shoreland Overlay
  - LRO Limited Residential Shoreland Overlay
  - LRPO Limited Resource Protection Shoreland Overlay
  - RPO Resource Protection Shoreland Overlay
  - SPO Stream Protection Shoreland Overlay
  - TBO Tannery Brook Shoreland Overlay



**OFFICIAL ZONING MAP**  
Bucksport, ME  
Sheet 2 of 2

THE LOCATIONS OF DISTRICT BOUNDARY LINES ARE INTERPRETED AS FOLLOWS:  
BOUNDARY LINES SHOWN FOLLOWING STREETS, HIGHWAYS, RAILROADS OR RIGHTS-OF-WAY ARE CONSTRUED TO FOLLOW THEIR CENTERLINES.  
BOUNDARY LINES THAT ARE NOT REFERENCED TO ANY IDENTIFIABLE FEATURE MUST BE DETERMINED BY MEASUREMENT BASED ON THE SCALE OF THE MAP.  
BOUNDARY LINES OF SHORELAND DISTRICTS ARE CONSTRUED TO BE LOCATED A UNIFORM DISTANCE FROM THE NORMAL HIGH WATER LINE OF A WATER BODY OR THE UPLAND EDGE OF WETLAND VEGETATION, AS APPLICABLE, BASED ON THE DISTRICT DESCRIPTIONS IN SECTION 7 OF THE LAND USE ORDINANCE.

**CERTIFICATION**

MAP ADOPTED ON: \_\_\_\_\_  
CERTIFIED BY: \_\_\_\_\_  
Town Clerk

Parcels last updated in 2023.  
Scale for insets 1 - 9: 1" = 600'  
Scale for Compact Area inset: 1" = 1,000'

Source: Town of Bucksport and Maine Office of GIS  
Original map created by J. E Fitzgerald, Town of Bucksport  
Updated by LatLong Logic, LLC (January, 2024)