



MEMORANDUM

TO: Sharon McCullough
DATE: January 27, 2023
FROM: Douglas Johnson, RVE
CC: Joshua Pratt, RVE
SUBJECT: 2023 Road Program Tree Evaluation

RVE recently completed a review of the roadways proposed to be reconstructed as part of the 2023 Road Program. Based upon our field review, there were several trees which need to be removed due to poor health and trees which should be removed due to potential road construction conflicts.

The following is a breakdown of trees, observations and recommendations:

<u>LOCATION</u>	<u>OBSERVATIONS</u>	<u>RECOMMENDATION</u>
61 Linden Avenue	30" tree with roots against curb	Tree root protection plate to be installed
57 Linden Avenue	48" Sugar Maple (F1) is in fair condition but have fungus and roots overhanging the curb	Tree to be removed due to construction
53 Linden Avenue	34" Silver Maple (F1) tree is in poor condition	Tree to be removed due to poor condition
Patco Lot	30" tree with roots overhanging the curb and pushing the curb out	Tree to be removed due to construction
Patco Lot	26" Sweetgum (F6) is in fair condition with roots overhanging the curb	Tree to be removed due to construction
17 Kings Highway West	24" tree with roots against curb	Tree root protection plate to be installed
2-10 Linden Avenue	20" American Linden (F2) stalk	Tree to be removed due to construction
32 Linden Avenue	30" Honey Locust (F1) is in good condition with roots overhanging the curb	Trees to be removed due to construction.

32 Linden Avenue	30" tree with roots against curb	Tree root protection plate to be installed
36 Linden Avenue	36" Silver Maple (F1) is in good condition slightly pushing curb out	Tree to be removed due to construction
44 Linden Avenue	30" Pin Oak (F1) is in good condition with roots overhanging the curb	Tree to be removed due to construction
44 Linden Avenue	36" tree with roots overhanging the curb and pushing the curb out	Tree to be removed due to construction
54 Linden Avenue	36" tree with roots against curb	Tree root protection plate to be installed
54 Linden Avenue	36" tree with roots against curb	Tree root protection plate to be installed
66 Linden Avenue	48" tree with roots overhanging the curb and pushing the curb out	Tree root protection plate to be installed
66 Linden Avenue	40" tree with roots overhanging the curb and pushing the curb out	Tree root protection plate to be installed
70 Linden Avenue	38" London Plane (F1) is in good condition with roots overhanging the curb	Tree to be removed due to construction
250 Wayne Avenue	48" tree with roots overhanging the curb and pushing the curb out	Tree to be removed due to construction
248 Wayne Avenue	36" Pin Oak (F1) is in good condition with roots overhanging the curb and road	Tree to be removed due to construction
224 Wayne Avenue	18" Red Oak (F1) is in poor condition	Tree to be removed due to poor condition
204 Wayne Avenue	60" Willow Oak (F1) is in good condition with roots overhanging the curb and road	Tree to be removed due to construction
415 Wood Lane	22" Pin Oak (F2) is in poor condition with roots overhanging on the curb	Tree to be removed due to poor condition and construction
415 Wood Lane	22" Red Oak (F3) is girdling itself and is in poor condition	Tree to be removed due to poor condition
421 Wood Lane	16" Sugar Maple (S1) might interfere with construction if storm drain needs to be replaced	Tree to be removed due to construction

221 Wayne Avenue	16" Red Maple (F1) is in good condition slightly pushing the curb out	Tree to be removed due to construction
241 Wayne Avenue	36" London Plane (F1) is in good condition with roots overhanging the curb	Tree to be removed due to construction
251 Wayne Avenue	52" Pin Oak (F1) might interfere with construction if storm drain needs to be replaced	Tree to be removed due to construction
709 Cedar Avenue	30" tree with roots against curb	Tree root protection plate to be installed
745 Cedar Avenue	30" Red Maple (F1) is in poor condition	Tree to be removed due to poor condition
704 Cedar Avenue	36" Oak (F1) is in poor condition	Tree to be removed due to poor condition
704 Cedar Avenue	36" tree with roots overhanging the curb and pushing the curb out	Tree root protection plate to be installed
708 Cedar Avenue	36" tree with roots overhanging the curb and pushing the curb out	Tree root protection plate to be installed
712 Cedar Avenue	36" tree with roots overhanging the curb and pushing the curb out	Tree to be removed under separate contract
716 Cedar Avenue	36" tree with roots overhanging the curb and pushing the curb out	Tree to be removed under separate contract
720 Cedar Avenue	36" tree with roots overhanging the curb and pushing the curb out	Tree root protection plate to be installed
740 Cedar Avenue	40" tree with roots overhanging the curb and pushing the curb out	Tree to be removed under separate contract
401 Washington Avenue	28" Sugar Maple (S1) is in good condition slightly pushing the curb out	Tree to be removed due to construction
22 W Summit Avenue	20" Ash (S1) is in poor condition	Tree to be removed due to poor condition
18 W Summit Avenue	30" tree with roots overhanging the curb and pushing the curb out	Tree to be removed due to construction
6 W Summit Avenue	24" Red Oak (F1) is in good condition that slightly pushed the curb out	Tree to be removed due to construction

7 W Summit Avenue	20" Honey Locust (F1) is in poor condition that overhangs the curb and the road	Tree to be removed due to poor condition
17 W Summit Avenue	10" tree in poor condition	Tree to be removed under separate contract
25 W Summit Avenue	20" Ash (S1) is in poor condition	Tree to be removed due to poor condition
11 Heritage Road	20" Sugar Maple (F1) is in good condition and overhangs part of the curb and road	Tree to be removed due to construction
645 Washington Avenue	14" Willow Oak (S1) is in good condition and slightly pushes the curb out	Tree root protection plate to be installed
101 Heritage Road	48" Pin Oak (F1) is in OK condition but and overhangs part of the curb and road	Tree to be removed due to construction
127 Heritage Road	34" Pin Oak (F1) is in poor condition and overhangs part of the road and sidewalk	Tree to be removed due to poor condition
135 Heritage Road	60" Pin Oak (F1) is in good condition and overhangs part of the curb and road	Tree to be removed due to construction
112 Heritage Road	16" Crab Apple (F2) is in poor condition	Tree to be removed due to poor condition
46 Heritage Road	48" tree with roots overhanging the curb and pushing the curb out	Tree to be removed under separate contract
18 Heritage Road	36" tree with roots overhanging the curb and pushing the curb out	Tree to be removed under separate contract
6 Heritage Road	48" tree with roots overhanging the curb and pushing the curb out	Tree to be removed under separate contract
9 Lafayette Avenue	24" tree with roots against curb	Tree root protection plate to be installed
11 Lafayette Avenue	28" Sweetgum (F1) is in good condition and overhangs part of the curb and road	Tree to be removed due to construction
15 Lafayette Avenue	36" Sweetgum (F1) is in good condition and overhangs part of the curb and road	Tree to be removed due to construction
17 Lafayette Avenue	40" London Plane tree (F1) is in good condition but slightly pushes the curb out	Tree to be removed due to construction

17 Lafayette Avenue

40" Red Oak (F1) is in good condition and overhangs part of the curb and road

Tree to be removed due to construction

19 Lafayette Avenue

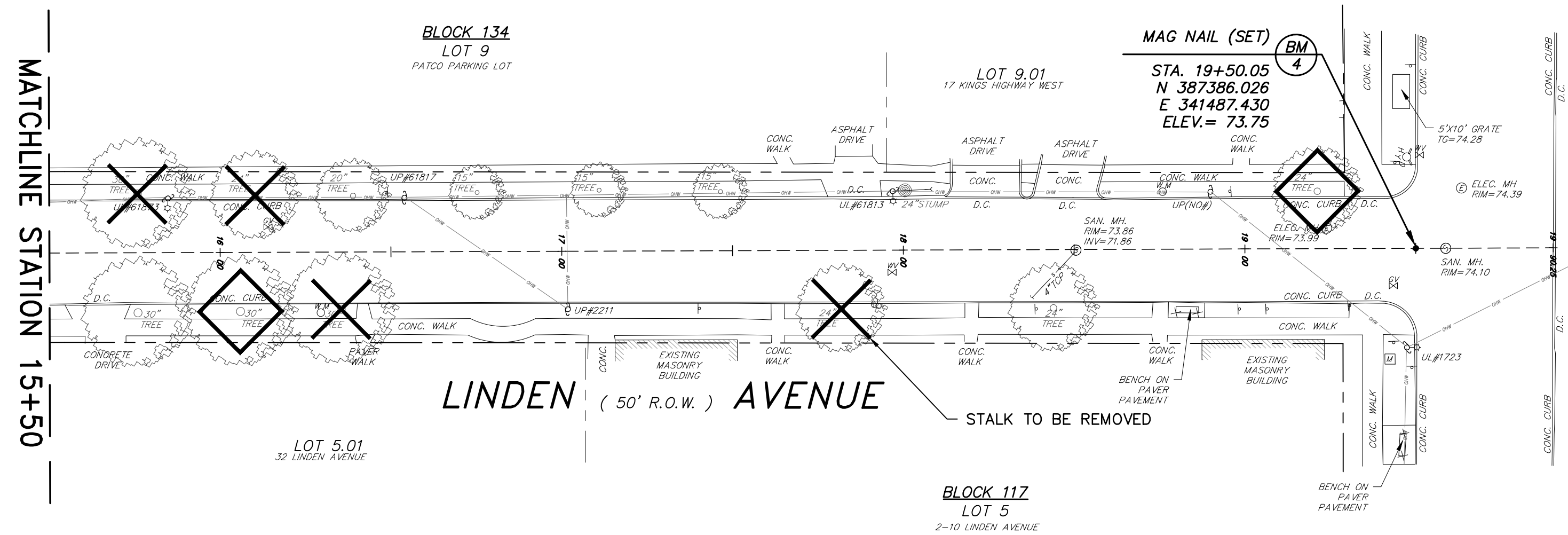
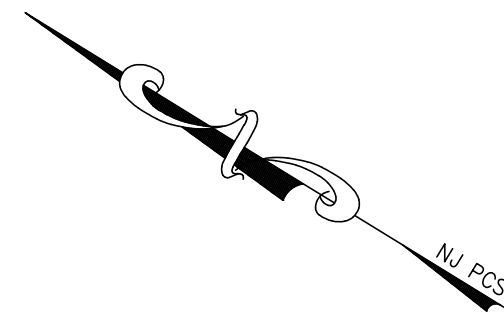
24" tree with roots overhanging the curb and pushing the curb out

Tree to be removed due to construction

STREET	REMOVED DUE TO CONSTRUCTION	REMOVED DUE TO HEALTH	TREE PROTECTION PLATE	TREE TO REMAIN
Linden Avenue	8	1	7	17
Cedar Avenue	0	2	4	22
Wayne Avenue	8	2	0	9
West Summit Avenue	3	4	0	12
Heritage Road	3	2	1	32
Lafayette Avenue	5	0	1	1

In conclusion, several of the trees will need to be removed due to health or conflicts with roadway construction. However, several trees can remain with the use of a tree plate.

Enclosed with this memorandum is a mark-up of the survey for each roadway indicating the location of each tree proposed to remain, be removed and/or receive a tree plate.

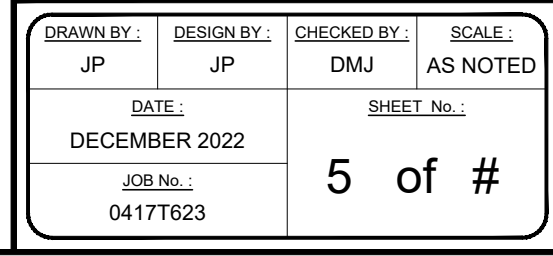
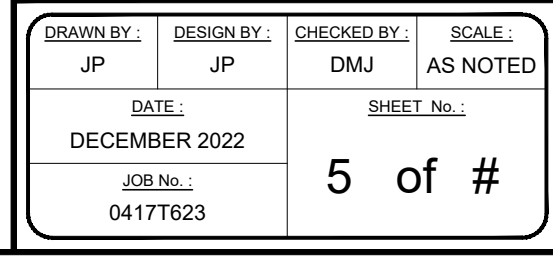


CONSTRUCTION PLAN
SCALE: 1"=20'



1. THE HORIZONTAL DATUM IS BASED ON THE NEW JERSEY PLANE COORDINATE SYSTEM, (NAD-1983 / 2011 ADJ.) AND THE VERTICAL DATUM IS BASED ON NAVD-1988 / GEOID 2012b (ADD 1.14 FEET TO THESE ELEVATIONS TO CONVERT TO NGVD-1929 DATUM)
2. PROPERTY AND RIGHT-OF-WAY LINES SHOWN ON THESE PLANS ARE BASED ON THE CURRENT TAX MAPS OF THE BOROUGH OF HADDONFIELD, CAMDEN COUNTY AND ARE SHOWN FOR GRAPHICAL INFORMATION ONLY AND HAVE NOT BEEN FIELD VERIFIED.
3. EXISTING TOPOGRAPHIC CONDITIONS WERE SURVEYED BY REMINGTON & VERNICK ENGINEERS UNDER THE SUPERVISION OF CHARLES E. ADAMSON, N.J., P.L.S., LICENSE NO. 42627. THE SURVEY WORK WAS COMPLETED ON NOVEMBER 03, 2021.
4. THIS PLAN AND SURVEY DOES NOT CERTIFY TO THE LOCATION, BOTH HORIZONTAL AND VERTICAL OF ANY UNDERGROUND UTILITY OR STRUCTURE THAT WAS NOT EXPOSED FOR DIRECT MEASUREMENT.

[illegible]





DATE: _____
DOUGLAS M. JOHNSON
NJ PROFESSIONAL ENGINEER LIC. No. 52531

ALL DOCUMENTS PREPARED BY REMINGTON & VERNICK ENGINEERS AND AFFILIATES ARE INSTRUMENTS OF SERVICE IN RESPECT OF THE PROJECT. THEY ARE NOT INTENDED OR REPRESENTED TO BE SUITABLE FOR REUSE BY OWNER OR OTHERS ON EXTENSIONS OF THE PROJECT OR ON ANY OTHER PROJECT. ANY REUSE WITHOUT WRITTEN VERIFICATION OR ADAPTATION BY REMINGTON & VERNICK ENGINEERS AND AFFILIATES FOR THE SPECIFIC PURPOSE INTENDED WILL BE AT OWNERS SOLE RISK AND REMINGTON & VERNICK ENGINEERS AND AFFILIATES, AND OWNERS, SHALL INDEMNIFY AND HOLD HARMLESS REMINGTON & VERNICK ENGINEERS AND AFFILIATES FROM ALL CLAIMS, DAMAGES, LOSSES AND EXPENSES ARISING OUT OF OR RESULTING THEREFROM.

[illegible]

NEW JERSEY

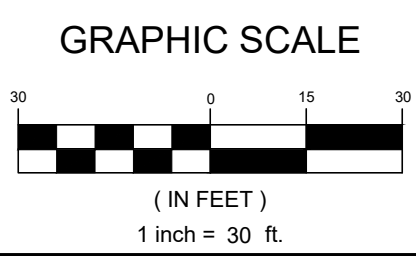
CAMDEN COUNTY

HADDONFIELD D. BOBOLICH

<u>DRAWN BY :</u> JP	<u>DESIGN BY :</u> JP	<u>CHECKED BY :</u> DMJ	<u>SCALE :</u> AS NOTED
<u>DATE :</u> DECEMBER 2022		<u>SHEET No. :</u> 6 of #	
<u>JOB No. :</u> 0417T623			



1. THE HORIZONTAL DATUM IS BASED ON THE NEW JERSEY STATE PLANE COORDINATE SYSTEM (NAD=1983 / 2011 ADJ.) AND THE VERTICAL DATUM IS BASED ON NAVD=1988 / GEOID 2018 (ADD 1.13 FEET TO THESE ELEVATIONS TO CONVERT TO NGVD=1929 DATUM).
2. PROPERTY AND RIGHT-OF-WAY LINES SHOWN ON THESE PLANS ARE APPROXIMATE LOCATIONS BASED ON THE CURRENT TAX MAPS OF THE BOROUGH OF HADDONFIELD, CAMDEN COUNTY, NEW JERSEY. ADJOINING PROPERTY AND RIGHT-OF-WAY LINES ARE SHOWN FOR GRAPHICAL INFORMATION ONLY AND HAVE NOT BEEN FIELD VERIFIED.
3. EXISTING TOPOGRAPHIC CONDITIONS WERE SURVEYED BY REMINGTON & VERNICK ENGINEERS UNDER THE SUPERVISION OF CHARLES E. ADAMS, N.J.P.L.S. LICENSE NO. 42627. THE SURVEY WORK WAS COMPLETED ON NOVEMBER 02, 2022.
4. THIS PLAN AND SURVEY DOES NOT CERTIFY TO THE LOCATION, BOTH HORIZONTAL AND VERTICAL OF ANY UNDERGROUND UTILITY OR STRUCTURE THAT WAS NOT EXPOSED FOR DIRECT MEASUREMENT.





DATE: _____
DOUGLAS M. JOHNSON
NJ PROFESSIONAL ENGINEER LIC. No. 52531

ALL DOCUMENTS PREPARED BY REMINGTON & VERNICK ENGINEERS AND AFFILIATES ARE INSTRUMENTS OF SERVICE IN RESPECT OF THE PROJECT. THEY ARE NOT INTENDED OR REPRESENTED TO BE SUITABLE FOR REUSE BY OWNER OR OTHERS ON EXTENSIONS OF THE PROJECT OR ON ANY OTHER PROJECT. ANY REUSE WITHOUT WRITTEN VERIFICATION OR ADAPTATION BY REMINGTON & VERNICK ENGINEERS AND AFFILIATES FOR THE SPECIFIC PURPOSE INTENDED WILL BE AT OWNERS SOLE RISK AND REMINGTON & VERNICK ENGINEERS AND AFFILIATES, AND OWNERS, SHALL INDEMNIFY AND HOLD HARMLESS REMINGTON & VERNICK ENGINEERS AND AFFILIATES FROM ALL CLAIMS, DAMAGES, LOSSES AND EXPENSES ARISING OUT OF OR RESULTING THEREFROM.

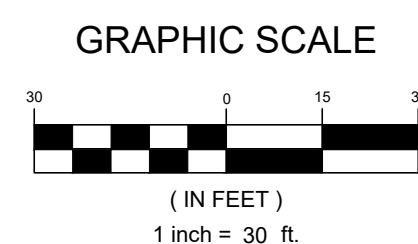
[illegible]

WARDENFIELD BOROUGH CAMDEN COUNTY NEW JERSEY

<u>DRAWN BY :</u> JP	<u>DESIGN BY :</u> JP	<u>CHECKED BY :</u> DMJ	<u>SCALE :</u> AS NOTED
<u>DATE :</u> DECEMBER 2022		<u>SHEET No. :</u> 7 of #	
<u>JOB No. :</u> 0417T623			



1. THE HORIZONTAL DATUM IS BASED ON THE NEW JERSEY STATE PLANE COORDINATE SYSTEM (NAD-1983 / 2011 ADJ.) AND THE VERTICAL DATUM IS BASED ON NAVD-1988 / GEOID 2018 (ADD 1.14 FEET TO THESE ELEVATIONS TO CONVERT TO NGVD-1929 DATUM).
2. PROPERTY AND RIGHT-OF-WAY LINES SHOWN ON THESE PLANS ARE APPROXIMATE LOCATIONS BASED ON THE CURRENT TAX MAPS OF THE BOROUGH OF HADDONFIELD, CAMDEN COUNTY, NEW JERSEY. ADJOINING PROPERTY AND RIGHT-OF-WAY LINES ARE SHOWN FOR GRAPHICAL INFORMATION ONLY AND HAVE NOT BEEN FIELD VERIFIED.
3. EXISTING TOPOGRAPHIC CONDITIONS WERE SURVEYED BY REMINGTON & VERNICK ENGINEERS UNDER THE SUPERVISION OF CHARLES E. ADAMS ON N.J.P.L.S. LICENSE NO. 42627. THE SURVEY WORK WAS COMPLETED ON NOVEMBER 2, 2022.
4. THIS PLAN AND SURVEY DOES NOT CERTIFY TO THE LOCATION, BOTH HORIZONTAL AND VERTICAL OF ANY UNDERGROUND UTILITY OR STRUCTURE, THAT WAS NOT EXPOSED FOR DIRECT MEASUREMENT.





DATE: _____
DOUGLAS M. JOHNSON
NJ PROFESSIONAL ENGINEER LIC. No. 52533

ALL DOCUMENTS PREPARED BY REMINGTON & VERNICK ENGINEERS AND AFFILIATES ARE INSTRUMENTS OF SERVICE IN RESPECT OF THIS PROJECT. THEY ARE NOT INTENDED OR REPRESENTED TO BE SUITABLE FOR REUSE BY OWNER OR OTHERS ON EXTENSIONS OF THE PROJECT OR ON ANY OTHER PROJECT. ANY REUSE WITHOUT WRITTEN VERIFICATION OR ADAPTATION BY REMINGTON & VERNICK ENGINEERS AND AFFILIATES FOR THE SPECIFIC PURPOSE INTENDED WILL BE AT OWNERS SOLE RISK AND WITHOUT LIABILITY. LEGAL EXPOSURE TO REMINGTON & VERNICK ENGINEERS AND AFFILIATES FOR SUCH REUSE SHALL INDEMNIFY AND HOLD HARMLESS REMINGTON & VERNICK ENGINEERS AND AFFILIATES FROM ALL CLAIMS, DAMAGES, LOSSES AND EXPENSES ARISING OUT OF OR RESULTING THEREFROM.

HERITAGE ROAD
CONSTRUCTION PLAN

2023 ROAD IMPROVEMENT PROGRAM

HADDONFIELD BOROUGH

DRAWN BY:
JP

DESIGN BY:
JP

CHECKED BY:
DMJ

SCALE:
AS NOTED

DATE:
DECEMBER 2022

JOB No.:
04177623

SHEET No.:

8 of #

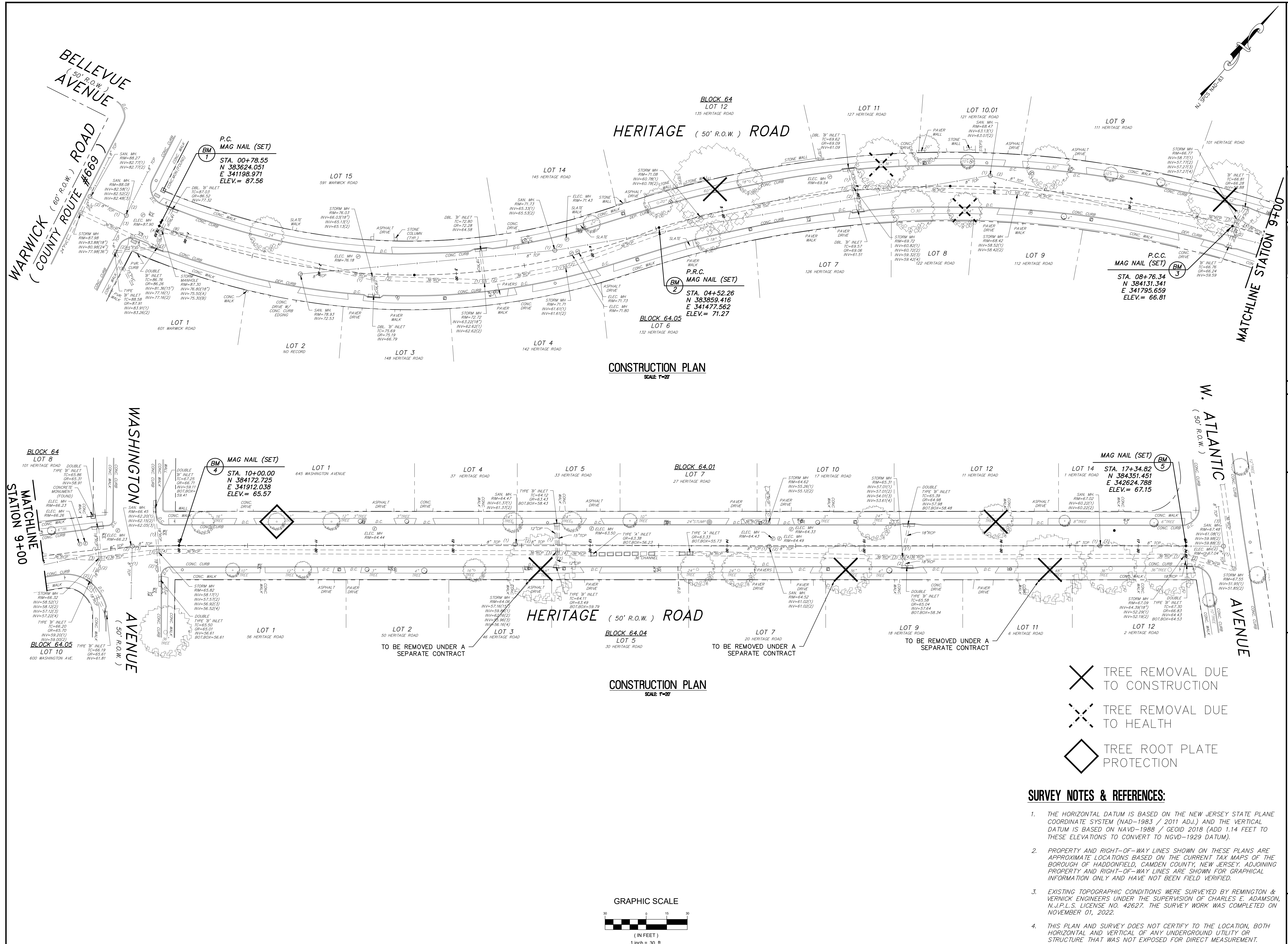
HADDONFIELD BOROUGH

CAMPDEN COUNTY

NEW JERSEY

CAMDEN COUNTY
NEW JERSEY

<u>DRAWN BY :</u> JP	<u>DESIGN BY :</u> JP	<u>CHECKED BY :</u> DMJ	<u>SCALE :</u> AS NOTED
<u>DATE :</u> DECEMBER 2022		<u>SHEET No. :</u> 8 of #	
<u>JOB No. :</u> 0417T623			





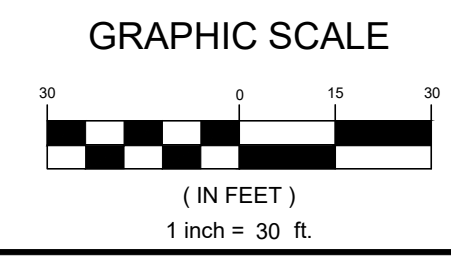
DATE: _____
DOUGLAS M. JOHNSON
NJ PROFESSIONAL ENGINEER LIC. No. 52531

ALL DOCUMENTS PREPARED BY REMINGTON & VERNICK ENGINEERS AND AFFILIATES ARE INSTRUMENTS OF SERVICE IN RESPECT OF THE PROJECT. THEY ARE NOT INTENDED OR REPRESENTED TO BE SUITABLE FOR REUSE BY OWNER OR OTHERS ON EXTENSIONS OF THE PROJECT OR ON ANY OTHER PROJECT. ANY REUSE WITHOUT WRITTEN VERIFICATION OR ADAPTATION BY REMINGTON & VERNICK ENGINEERS AND AFFILIATES FOR THE SPECIFIC PURPOSE INTENDED WILL BE AT OWNERS SOLE RISK AND WITHOUT LIABILITY OR LEGAL EXPOSURE TO REMINGTON & VERNICK ENGINEERS AND AFFILIATES; AND OWNERS SHALL INDEMNIFY AND HOLD HARMLESS REMINGTON & VERNICK ENGINEERS AND AFFILIATES FROM ALL CLAIMS, DAMAGES, LOSSES AND EXPENSES ARISING OUT OF OR RESULTING THEREFROM.

[illegible]

WARDENFIELD BOROUGH NEW JERSEY CAMDEN COUNTY

<u>DRAWN BY :</u> JP	<u>DESIGN BY :</u> JP	<u>CHECKED BY :</u> DMJ	<u>SCALE :</u> AS NOTED
<u>DATE :</u> DECEMBER 2022		<u>SHEET No. :</u> 9 of #	
<u>JOB No. :</u> 0417T623			



- | | |
|---|-------------------------------------|
|  | TREE REMOVAL DUE
TO CONSTRUCTION |
|  | TREE REMOVAL DUE
TO HEALTH |
|  | TREE ROOT PLATE
PROTECTION |

SURVEY NOTES & REFERENCES:

1. THE HORIZONTAL DATUM IS BASED ON THE NEW JERSEY STATE PLANE COORDINATE SYSTEM (NAD-1983 / 2011 ADJ.) AND THE VERTICAL DATUM IS BASED ON NAVD-1988 / GEOID 2018 (ADD 1.14 FEET TO THESE ELEVATIONS TO CONVERT TO NGVD-1929 DATUM).
2. PROPERTY AND RIGHT-OF-WAY LINES SHOWN ON THESE PLANS ARE APPROXIMATE LOCATIONS BASED ON THE CURRENT TAX MAPS OF THE BOROUGH OF HADDONFIELD, CAMDEN COUNTY, NEW JERSEY. ADJOINING PROPERTY AND RIGHT-OF-WAY LINES ARE SHOWN FOR GRAPHICAL INFORMATION ONLY AND HAVE NOT BEEN FIELD VERIFIED.
3. EXISTING TOPOGRAPHIC CONDITIONS WERE SURVEYED BY REMINGTON & VERNIX ENGINEERS UNDER THE SUPERVISION OF CHARLES E. ADAMSON, N.J.C.E. LICENSE NO. 42627. THE SURVEY WORK WAS COMPLETED ON NOVEMBER 3, 2022.
4. THIS PLAN AND SURVEY DOES NOT CERTIFY TO THE LOCATION, BOTH HORIZONTAL AND VERTICAL OF ANY UNDERGROUND UTILITY OR STRUCTURE THAT WAS NOT EXPOSED FOR DIRECT MEASUREMENT.