

KEEFE & WESNER ARCHITECTS P.C.
 P.O. Box 367, North Bennington, Vt 05257
 (802) 447-1724 geoff@keefeandwesner.com

STAMP AND SIGNATURE:

THESE DRAWINGS ARE THE INTELLECTUAL PROPERTY OF KEEFE & WESNER ARCHITECTS AND MAY NOT BE REPRODUCED, REVISED, OR USED FOR ANY PURPOSE WITHOUT PRIOR WRITTEN PERMISSION

BENNINGTON SKATE PARK
 BENNINGTON, VERMONT
 PRELIMINARY-NOT FOR CONSTRUCTION

DATE ISSUED: 6/7/22

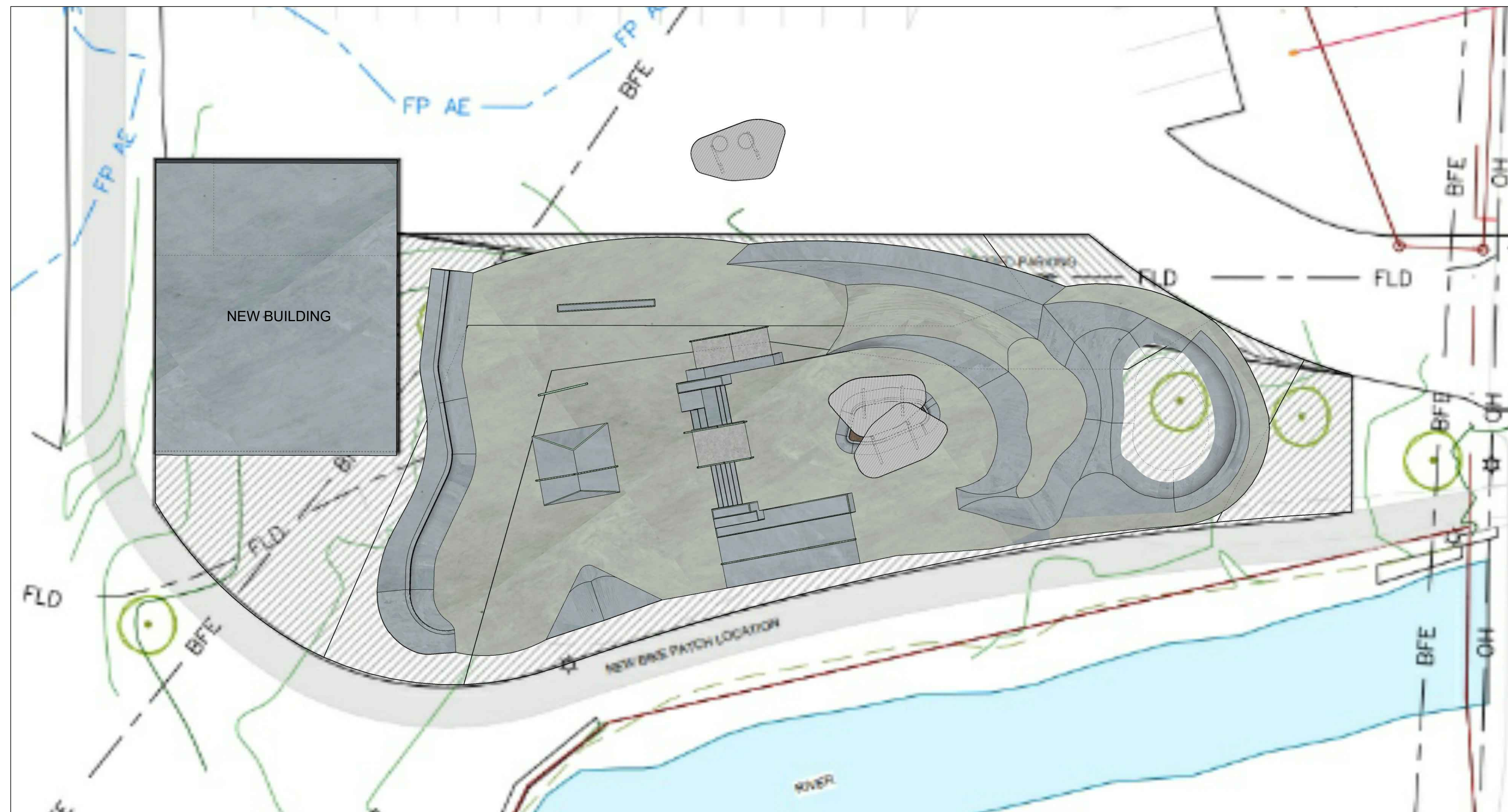
REVISIONS:

DRAWN BY: GM
 CHECKED BY:
 SCALE: AS SHOWN
 TITLE:

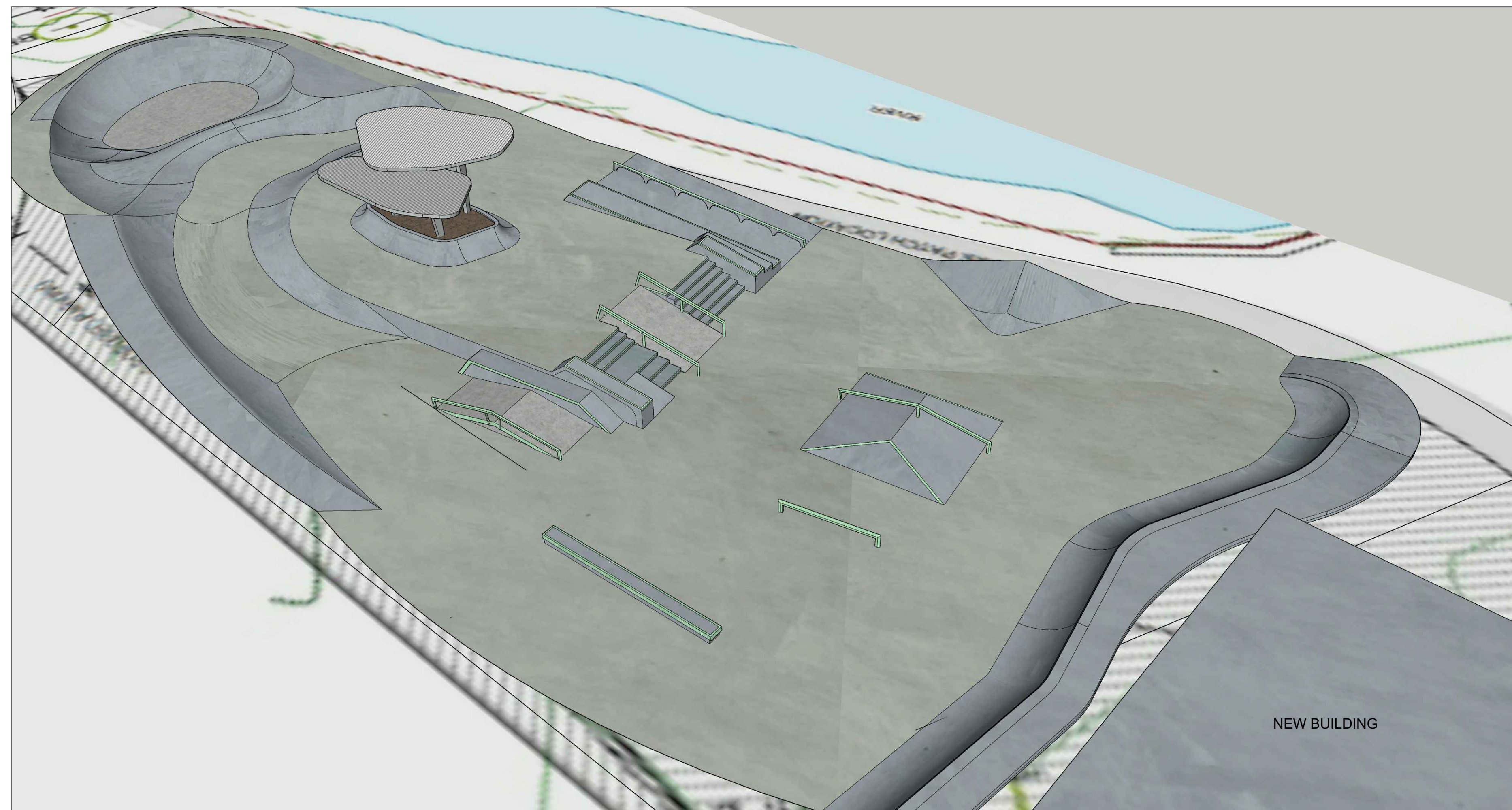
CONCEPT SITE PLAN

DRAWING NO.

SP1



SKATE PARK CONCEPTUAL PLAN



SKATE PARK CONCEPTUAL 3D ELEVATION

STAMP AND SIGNATURE:

THESE DRAWINGS ARE THE INTELLECTUAL PROPERTY OF KEEFE & WESNER ARCHITECTS AND MAY NOT BE REPRODUCED, REVISED, OR USED FOR ANY PURPOSE WITHOUT PRIOR WRITTEN PERMISSION

BENNINGTON SKATE PARK
 BENNINGTON, VERMONT
 PRELIMINARY-NOT FOR CONSTRUCTION

DATE ISSUED: 6/7/22

REVISIONS:

DRAWN BY: GM
 CHECKED BY:
 SCALE: AS SHOWN

TITLE:
CONCEPT SKATE PARK

DRAWING NO.

SP2