



Southern Bennington PFAS

September 28, 2023

Presentation Outline

- PFAS General overview
- Past PFAS Sampling
- What Brought Us to the South Side of Bennington
- Summer Sampling Results
- Actions Taken with These Results
- Next Steps
- Health Concerns, Dr. Sarah Owen, PhD, VDH
- Bennington Actions
- VT DEC Actions (next steps)

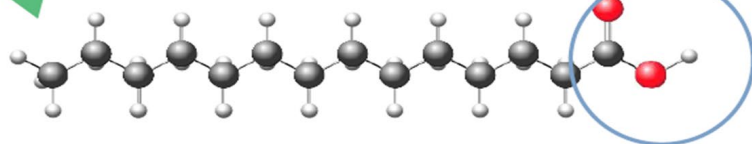
Per- and polyfluoroalkyl substances (PFAS)

General overview

What are PFASs?

Alkyl chain (of C-F atoms), typically 2 to 16 carbon atoms

Functional Group
(e.g., carboxylate,
sulfonate)



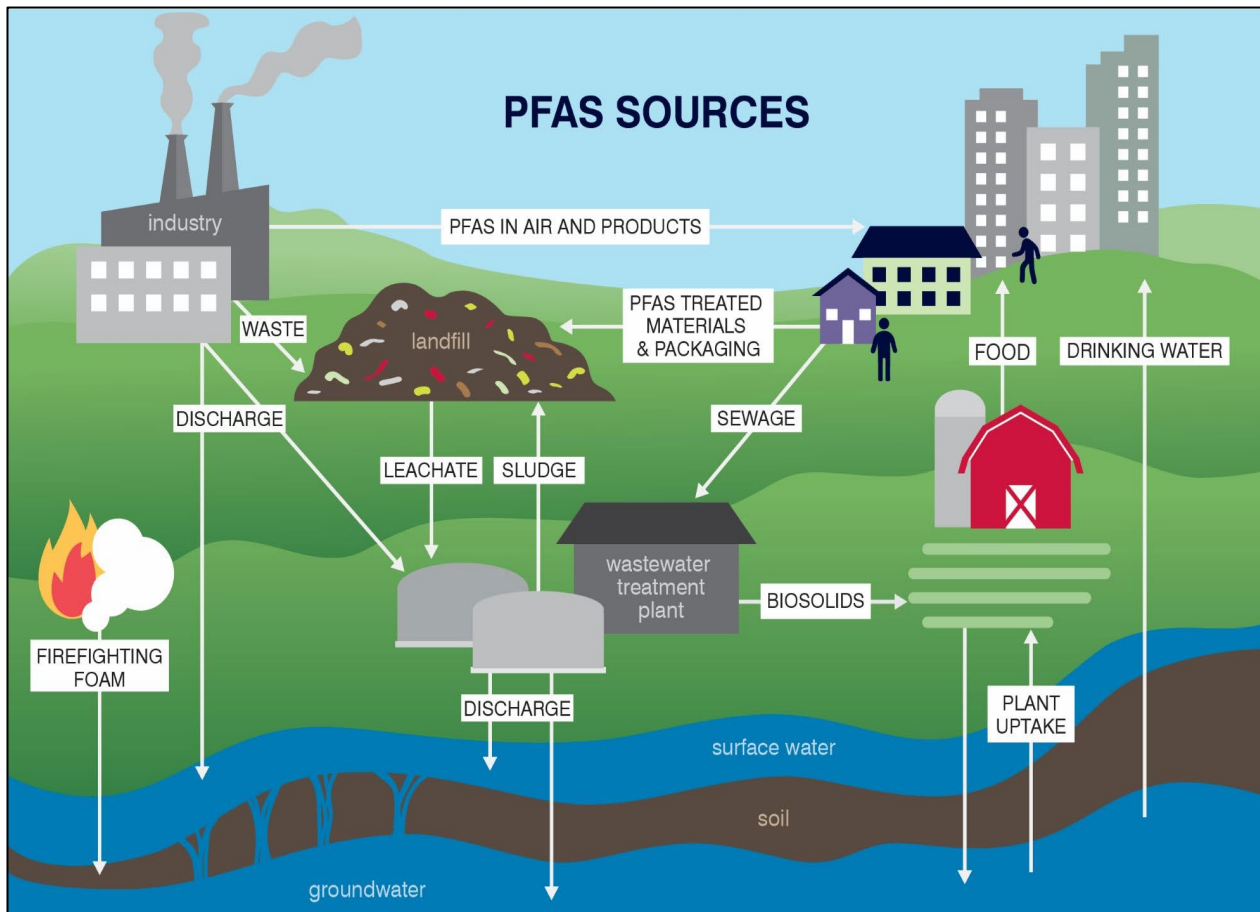
Thousands of PFAS, we only test for 17, 27 or 40



What are PFASs in?

- Textile coating (Chemfab) (Perfluorooctanoic Acid: PFOA)
- Some fire-fighting foams (AFFF) (Perfluorooctane sulfonic acid: PFOS)
- Teflon production
- Coatings for electronics
- Scotchgard/GORE-TEX

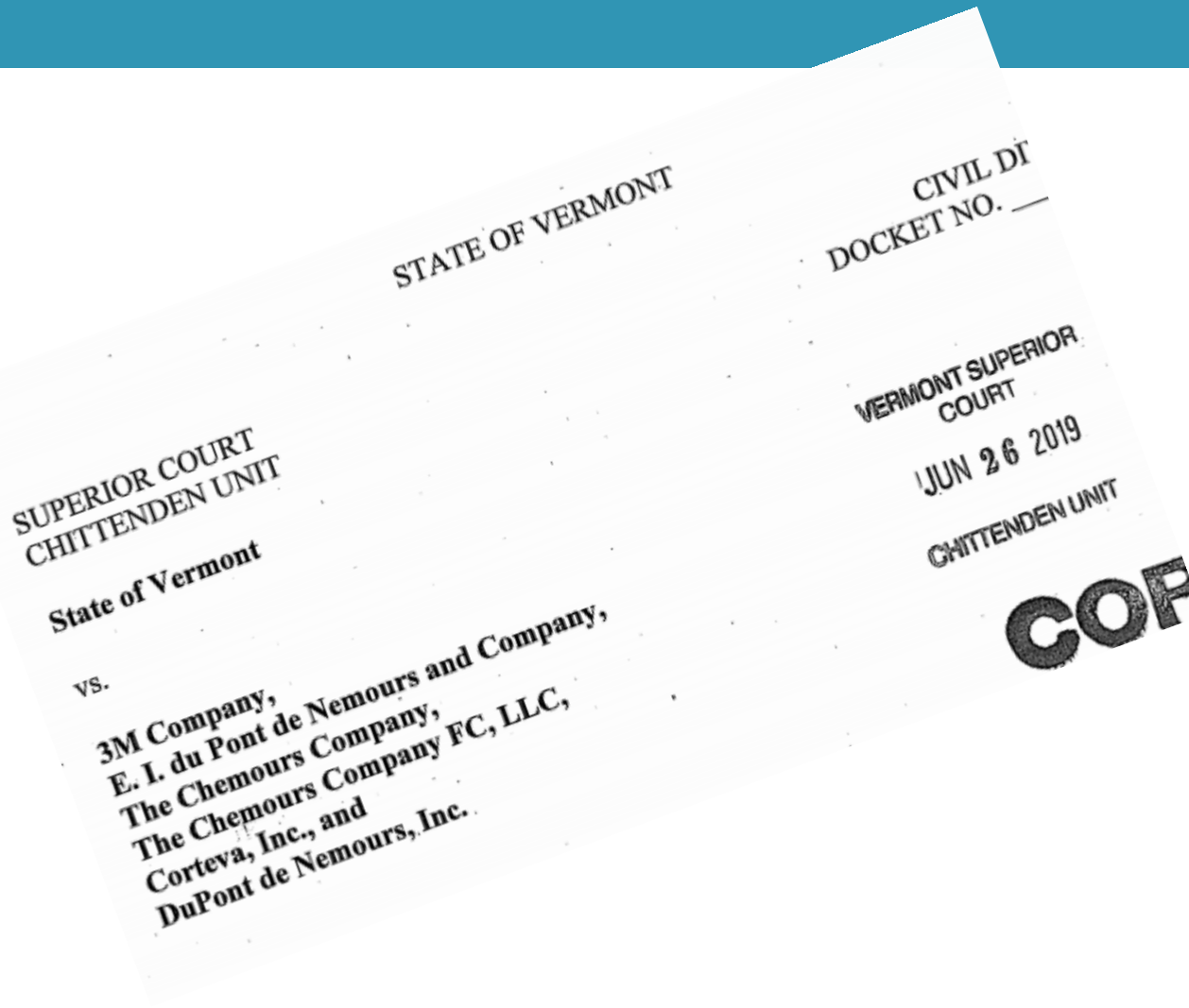
PFAS General overview



<https://www.westonandsampson.com/services/environmental-consulting/pfas-emerging-contaminants/>

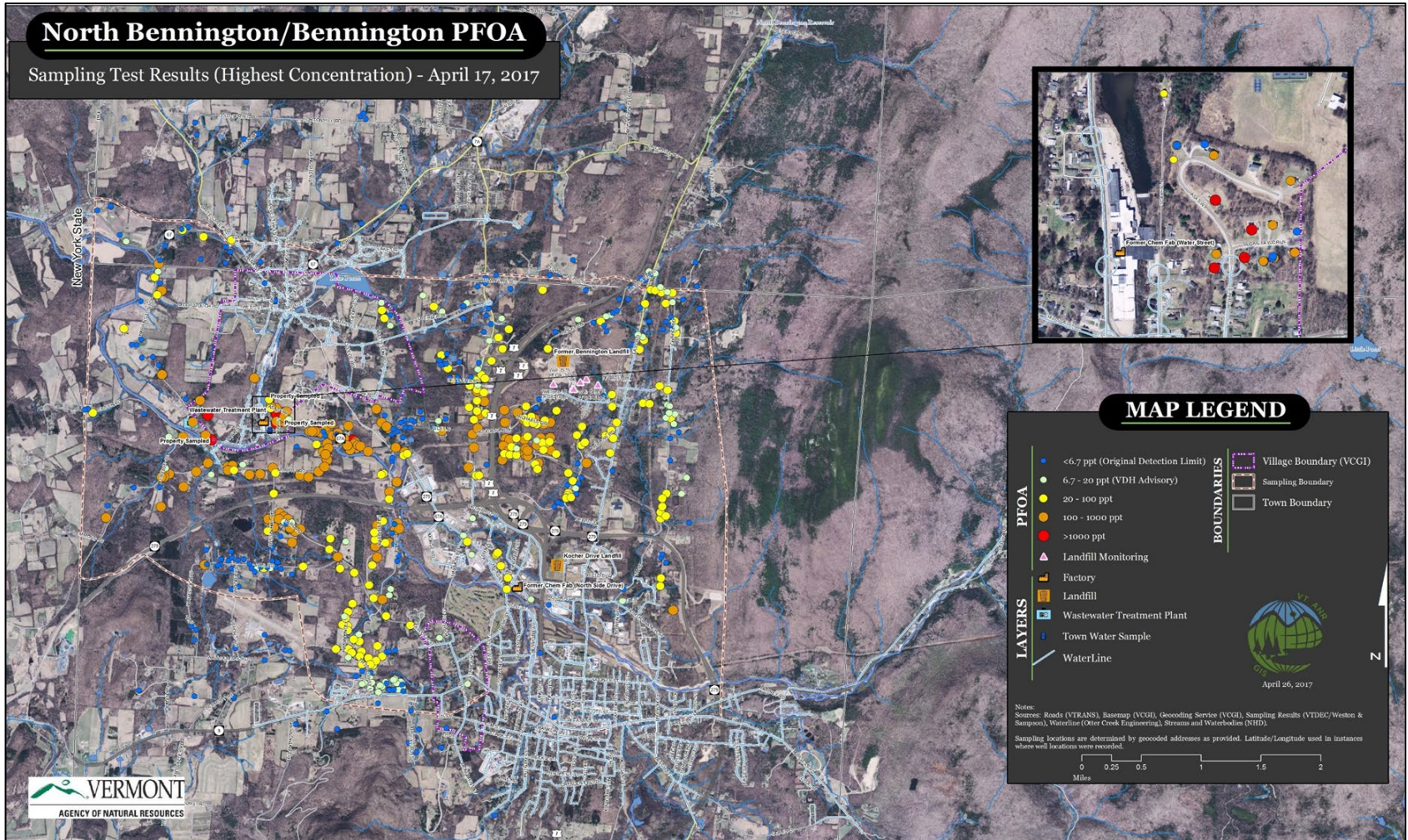
- How does PFAS migrate?
- Atmospheric deposition (dry or wet)
 - Groundwater
 - Leaching

What Brought Us to the South Side of Bennington

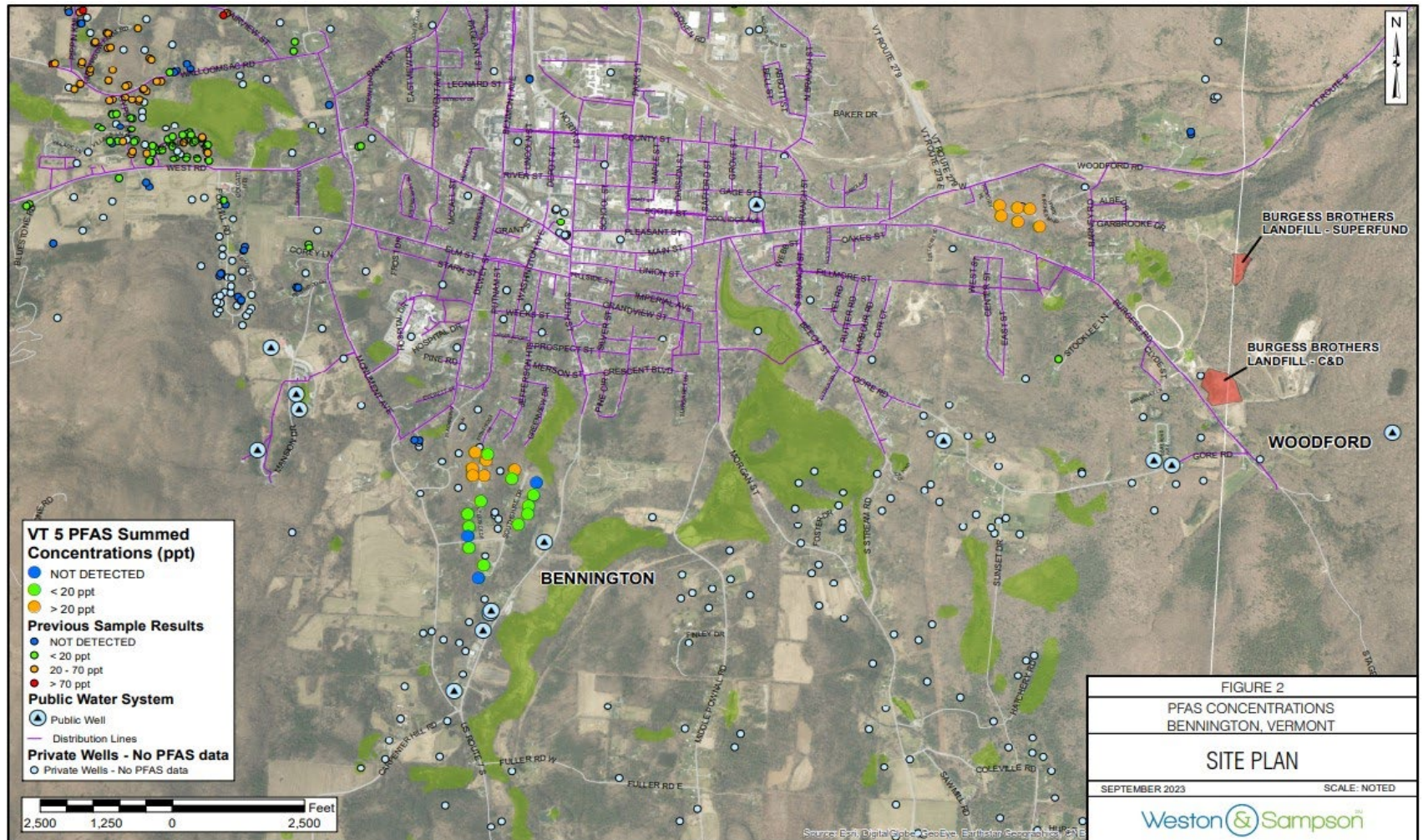


- 500 private wells sampled randomly across the state
- 2 located south of Route 9, a third resident privately sampled

Extent of previous work



Map of locations: South Side of Bennington



What we are doing now?

- Contacting residents with impacted supply wells
- Providing bottled water
- Installing/evaluating need for installation of point of entry treatment systems (POETS)

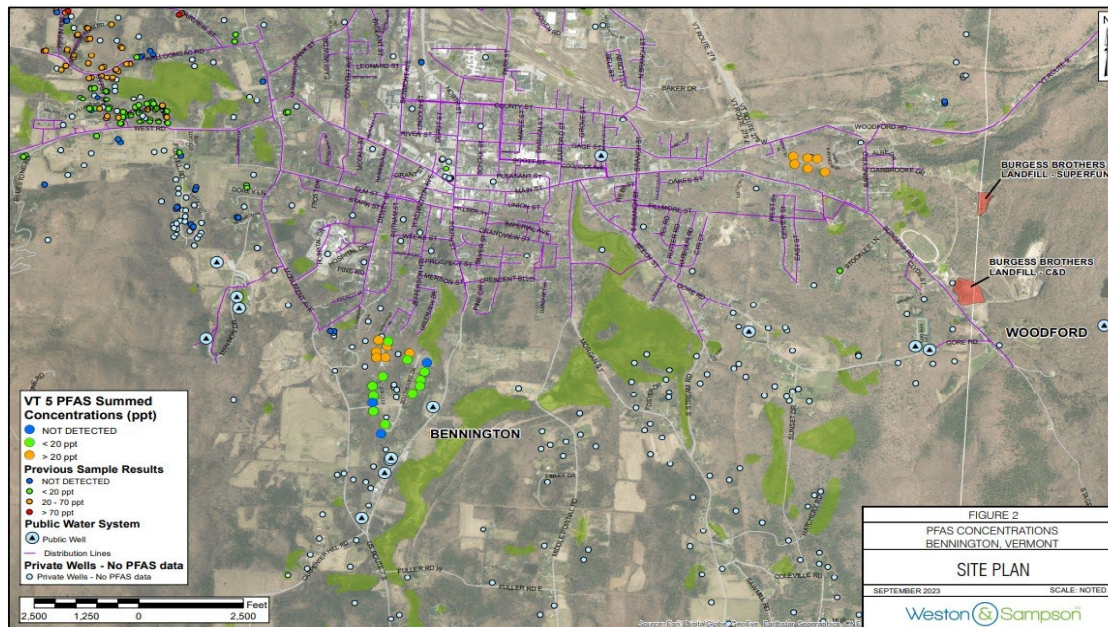


POET Picture



Next Steps

- Resample – sign up now, call us, will need access agreement
- Expand sampling (homes/neighborhoods S Rt 9 near sampled neighborhoods with wells)
- Identify and investigate potential sources



Health Concerns – Dr. Sarah Owen, PhD

Bennington Actions

Stuart Hurd, Bennington Town Manager and Jason Dolmetsch, MSK Engineering to give update on Town Actions

VT DEC Actions (next steps)

- We will be working with impacted residents to send sampling results (done for summer sampling), provide bottled water if above 15ppt, and install POETs above standard
- We will be reaching out to already sampled residents and newly located well owners to sample wells
- We will continue with potential source identification



DEPARTMENT OF ENVIRONMENTAL CONSERVATION
AGENCY OF EDUCATION
DEPARTMENT OF HEALTH

Questions?

Find more information about PFAS:

Please contact
Richard Spiese at 802-249-5083

or

Malayika Vincent at 802-505-1351