

AREA 1-1: RESIDENTIAL

3 EXITS
NO DEAD END CORRIDORS
17,297 SF
87 OCCUPANTS
AT 200 SF/OCC
72' LONGEST TRAVEL DISTANCE TO AN EXIT
1-HOUR RATING REQUIRED ALL ALL RESIDENTIAL EGRESS STAIRS IF OPTION 4 IS USED

AREA 1-2: ATHLETIC

2 EXITS EACH AREA
NO DEAD END CORRIDORS
8,677 SF
GYMNASIUM - 5,326 SF & 356 OCCUPANTS AT 15 SF/OCC (REVIEW - THIS USE NUMBER SEEMS UNREALISTIC IF NOT USED FOR EVENTS)
SUPPORT AREAS - 3,351 SF & 68 OCCUPANTS AT 50 SF/OCC
108' LONGEST TRAVEL DISTANCE TO AN EXIT

AREA 1-3: WORKSHOPS

EACH HAS SEPARATE EXIT & EXIT TO CORRIDOR WITH 4 EXITS
NO DEAD END CORRIDORS
7,161 SF
72 OCCUPANTS
AT 100 SF/OCC
55' LONGEST TRAVEL DISTANCE TO AN EXIT

AREA 1-4: OFFICE

SEPARATE EXIT & EXIT TO CORRIDOR WITH 4 EXITS
NO DEAD END CORRIDORS
1,647 SF
17 OCCUPANTS
AT 100 SF/OCC
58' LONGEST TRAVEL DISTANCE TO AN EXIT
POSSIBLE SMALL FOOD SERVICE USE - TO BE REVIEWED IN FUTURE PHASES

AREA 1-5: OFFICE

SEPARATE EXIT & EXIT TO CORRIDOR WITH 4 EXITS
NO DEAD END CORRIDORS
2,521 SF
26 OCCUPANTS
AT 100 SF/OCC
80' LONGEST TRAVEL DISTANCE TO AN EXIT

AREA 1-6: MEETING ROOM

SEPARATE EXIT & 2 EXITS TO CORRIDOR WITH 4 EXITS
NO DEAD END CORRIDORS
4,562 SF
305 OCCUPANTS
AT 15 SF/OCC
76' LONGEST TRAVEL DISTANCE TO AN EXIT

AREA 1-7: STORAGE

2 EXITS TO CORRIDOR WITH 4 EXITS
NO DEAD END CORRIDORS
1,301 SF
2 OCCUPANTS
PER 42.1.7 OCC. LOAD BASED ON PROBABLE USE
129' LONGEST TRAVEL DISTANCE TO AN EXIT

AREA 1-8: STORAGE

2 EXITS TO CORRIDOR WITH 4 EXITS
NO DEAD END CORRIDORS
1,527 SF
2 OCCUPANTS
PER 42.1.7 OCC. LOAD BASED ON PROBABLE USE
71' LONGEST TRAVEL DISTANCE TO AN EXIT

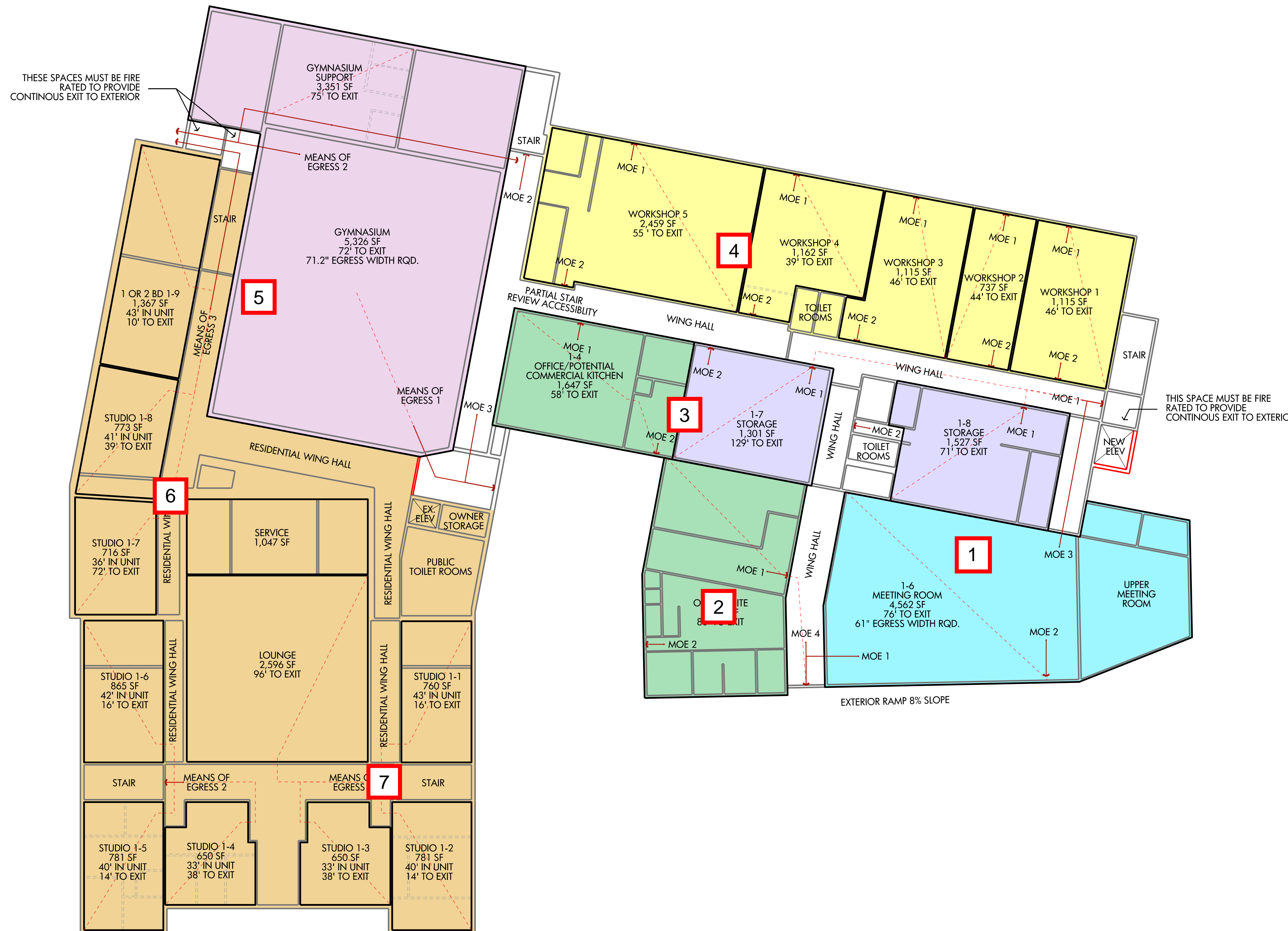
EXISTING STAIR REQUIREMENTS

ENCLOSED WITH EXIT TO EXTERIOR
36" WIDTH (EXCLUDING HANDRAILS)
8" MAX RISER HEIGHT
9" MIN TREAD DEPTH
6'-8" MIN HEAD ROOM
12'-0" MAX HEIGHT BETWEEN LANDINGS
DOORS TO BE 1-HR FIRE RATED, HAVE CLOSERS & LATCHING PANIC HARDWARE

NOTE: FLOOR PLANS PROVIDED BY OWNER - NOT ALL DIMENSIONS HAVE BEEN VERIFIED

KEY

	EXISTING WALLS		PROPOSED NEW WALLS
	UNIT OUTLINE		EGRESS PATH
	WALLS DEMOLISHED		





A LOWERED CEILING IS CONSTRUCTED HERE AT 6'-6" - IT MUST BE RAISED TO 6'-8"

NARROW POINT OF HALLWAY 43" - MIN. WIDTH IN RESIDENTIAL IS 36" - COMPLIES

AREA 2-1: RESIDENTIAL

SOUTH AREA - 3 EXITS; NORTH AREA - 2 EXITS
 DEAD END CORRIDOR 22' - ALLOWED
 19,611 SF
 99 OCCUPANTS
 AT 200 SF/OCC
 72' LONGEST TRAVEL DISTANCE TO AN EXIT
 1-HOUR RATING REQUIRED ALL ALL RESIDENTIAL EGRESS STAIRS IF OPTION 4 IS USED

AREA 2-2: OFFICE

EXIT TO CORRIDOR WITH 2 EXITS
 DEAD END CORRIDOR 23' - ALLOWED
 14,241 SF
 143 OCCUPANTS
 AT 100 SF/OCC
 133' LONGEST TRAVEL DISTANCE TO AN EXIT

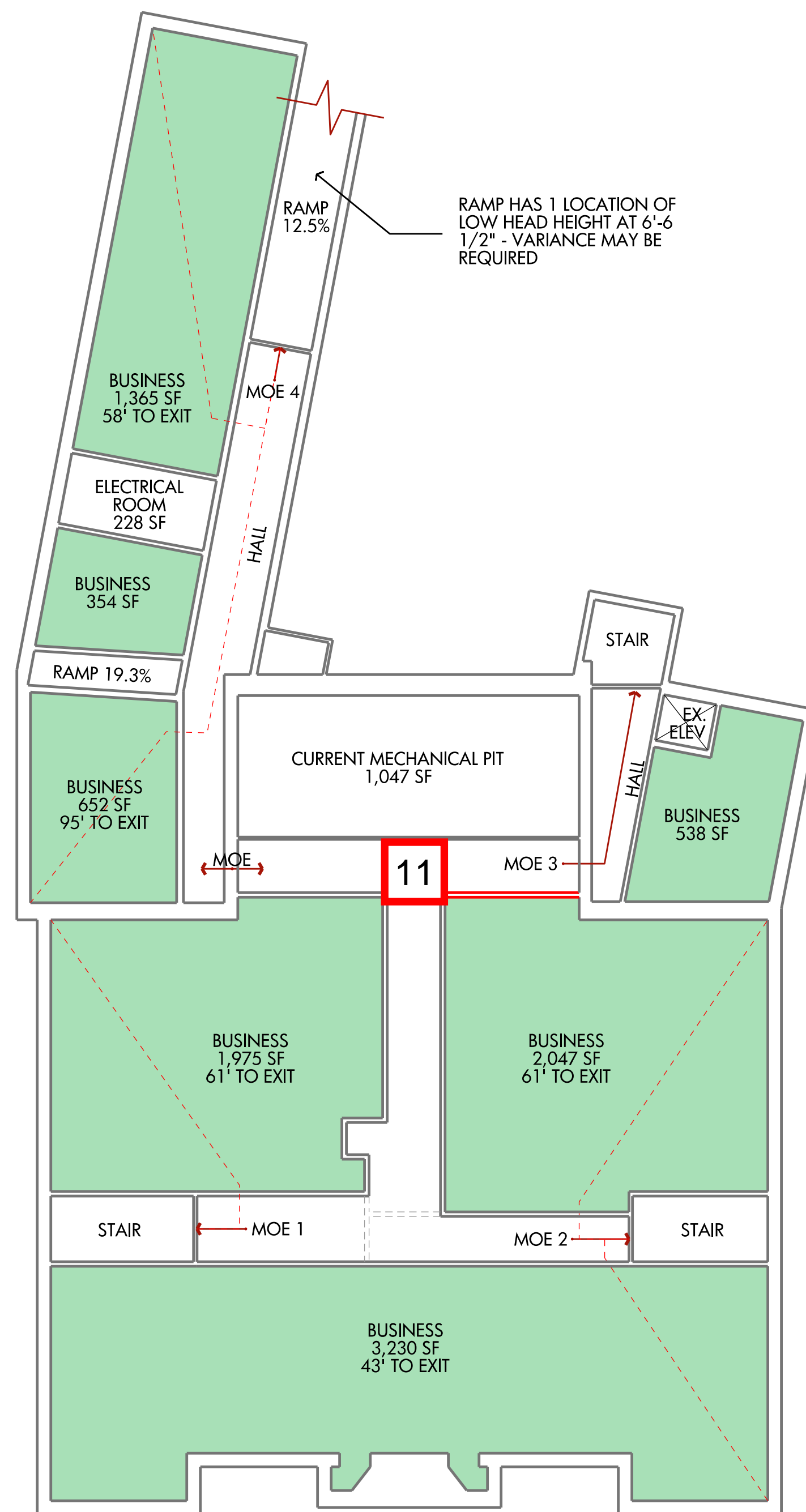
EXISTING STAIR REQUIREMENTS

ENCLOSED WITH EXIT TO EXTERIOR
 36" WIDTH (EXCLUDING HANDRAILS)
 8" MAX RISER HEIGHT
 9" MIN TREAD DEPTH
 6'-8" MIN HEAD ROOM
 12'-0" MAX HEIGHT BETWEEN LANDINGS
 DOORS TO BE 1-HR FIRE RATED, HAVE CLOSERS & LATCHING PANIC HARDWARE

NOTE: FLOOR PLANS PROVIDED BY OWNER - NOT ALL DIMENSIONS HAVE BEEN VERIFIED

KEY

— EXISTING WALLS	— PROPOSED NEW WALLS
— UNIT OUTLINE	- - - EGRESS PATH
- - - WALLS DEMOLISHED	



AREA B-1: BUSINESS

5 EXITS
 NO DEAD END CORRIDORS
 10,161 SF
 102 OCCUPANTS
 AT 100 SF/OCC
 95' LONGEST TRAVEL DISTANCE TO AN EXIT

AREA B-2: ACCESSORY

MECHANICAL SPACES
 NO DEAD END CORRIDORS
 1,275 SF (16,911 WHOLE STORY)

EXISTING STAIR REQUIREMENTS

ENCLOSED WITH EXIT TO EXTERIOR
 36" WIDTH (EXCLUDING HANDRAILS)
 8" MAX RISER HEIGHT
 9" MIN TREAD DEPTH
 6'-8" MIN HEAD ROOM
 12'-0" MAX HEIGHT BETWEEN LANDINGS
 DOORS TO BE 1-HR FIRE RATED, HAVE CLOSERS & LATCHING
 PANIC HARDWARE

NOTE: FLOOR PLANS PROVIDED BY OWNER - NOT ALL DIMENSIONS HAVE BEEN VERIFIED

NOTE: NOT ALL EXISTING PARTITIONS ARE SHOWN SINCE EXACT TENANT DIVISIONS ARE UNKNOWN. ONLY PRIMARY EXISTING HALLS ARE REPRESENTED.

KEY

— EXISTING WALLS	— PROPOSED NEW WALLS
— UNIT OUTLINE	- - - EGRESS PATH
- - - WALLS DEMOLISHED	