

**FUNDING SOURCES**

| <b>GRANTS</b>                 | <b>STATUS</b>      | <b>TOTAL</b>        |
|-------------------------------|--------------------|---------------------|
| VHCB: ARPA-SFR                | Board Meeting 6/26 | \$ 2,006,614        |
| DED: CRRP: Condo #1-LIHTC     | Awarded            | \$ 500,000          |
| DED: CRRP: Condo #2-NON-LIHTC | Apply by 4/30      | \$ 1,038,392        |
| TOB: ARPA-LOCAL               | Committed          | \$ 2,250,000        |
| ACCD>DHCD>VCDP: CDBG          | Board Meeting 6/8  | \$ 1,000,000        |
| NBRC: Catalist Program        | LOI Sumbitted 4/21 | \$ 1,000,000        |
| BCRC: BFR - for CAP           | Awarded            | \$ 45,000           |
| GMP - Incentive               | Pursuing           | \$ 119,880          |
| 3E Thermal - Incentive/Rebate | Pursuing           | \$ 54,000           |
| EVT - Incentive               | Pursuing           | \$ 83,904           |
|                               |                    |                     |
| <b>TOTAL GRANTS</b>           |                    | <b>\$ 8,097,789</b> |

| <b>TAX CREDITS</b>                          | <b>STATUS</b>        | <b>TOTAL</b>         |
|---|----------------------|----------------------|
| Inflation Reduction Act - Tax Credit Equity | MEP Pursuing         | \$ 1,566,040         |
| VHFA: LIHTC - Tax Credit Equity             | Board Meeting 5/22   | \$ 2,235,124         |
| RITC - Tax Credit Equity                    | Part 2 draft by 5/18 | \$ 4,736,196         |
| ERV: NMTC - Tax Credit Equity               | Intake Eval. 6/1     | \$ 5,897,949         |
| VDTC - State Tax Credit Equity              | Awarded              | \$ 160,000           |
|   |                      |                      |
| <b>TOTAL TAX CREDITS</b>                    |                      | <b>\$ 14,595,309</b> |

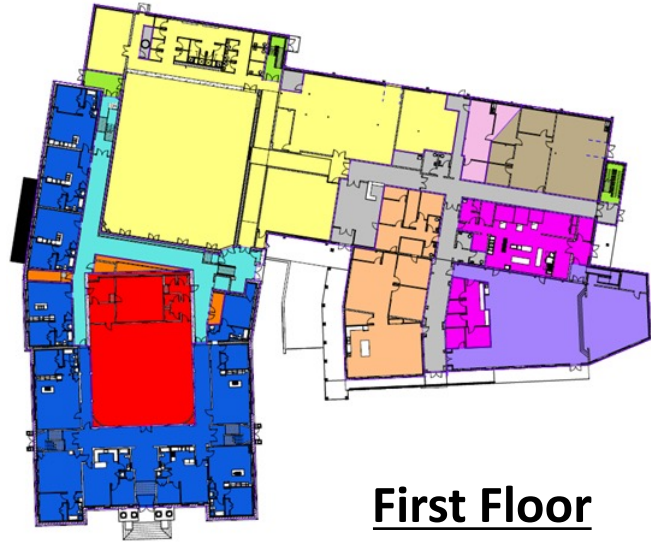
| <b>PRIVATE EQUITY</b>       | <b>STATUS</b> | <b>TOTAL</b>        |
|-----------------------------|---------------|---------------------|
| Private Investment Capital  | Raised        | \$ 500,000          |
| 10% in Vermont              | Apply by 6/1  | \$ 4,865,920        |
|                             |               |                     |
| <b>TOTAL PRIVATE EQUITY</b> |               | <b>\$ 5,365,920</b> |

|                                  |  |                      |
|----------------------------------|--|----------------------|
| <b>TOTAL FUNDING ALL SOURCES</b> |  | <b>\$ 28,059,019</b> |
|----------------------------------|--|----------------------|

| FUNDING SOURCES                             |                      | LIHTC CONDO #1      | NON-LIHTC CONDO #2  |                    |                     |                    |                    |                     |                     |                     |                     | TOTAL               |
|---|----------------------|---------------------|---------------------|--------------------|---------------------|--------------------|--------------------|---------------------|---------------------|---------------------|---------------------|---------------------|
| GRANTS                                      | Status               | 1A. LIHTC APTS      | 2B. NON-LIHTC APTS  | 2C. LOUNGE         | 3D. CHILDCARE       | 5K. OFFICE (LARGE) | 5L. OFFICE (SMALL) | 5G. KITCHEN/OFFICE  | 5H. SENIOR CENTER   | 5I. AUDITORIUM      | 5J. RECREATION      | TOTAL               |
| VHCB: ARPA-SFR                              | Board Meeting 6/26   | \$ 2,006,614        |                     |                    |                     |                    |                    |                     |                     |                     |                     | \$ 2,006,614        |
| DED: CRRP: Condo #1-LIHTC                   | Awarded              | \$ 500,000          |                     |                    |                     |                    |                    |                     |                     |                     |                     | \$ 500,000          |
| DED: CRRP: Condo #2-NON-LIHTC               | Apply by 4/30        |                     |                     |                    | \$ 742,470          |                    |                    | \$ 237,070          |                     | \$ 58,852           |                     | \$ 1,038,392        |
| TOB: ARPA-LOCAL                             | Committed            | \$ -                | \$ -                | \$ -               | \$ -                | \$ -               | \$ -               | \$ 329,407          | \$ 469,913          | \$ 365,753          | \$ 1,084,927        | \$ 2,250,000        |
| ACCD>DHCD>VCDP: CDBG                        | Board Meeting 6/8    | \$ 212,427          | \$ 262,781          | \$ 43,834          | \$ 133,691          | \$ 25,155          | \$ 7,492           | \$ 33,459           | \$ 44,973           | \$ 51,144           | \$ 185,044          | \$ 1,000,000        |
| NBRC: Catalist Program                      | LOI Sumbitted 4/21   | \$ -                | \$ -                | \$ -               | \$ 419,441          | \$ -               | \$ -               | \$ -                | \$ -                | \$ -                | \$ 580,559          | \$ 1,000,000        |
| BCRC: BFR - for CAP                         | Awarded              | \$ 9,559            | \$ 11,825           | \$ 1,973           | \$ 6,016            | \$ 1,132           | \$ 337             | \$ 1,506            | \$ 2,024            | \$ 2,301            | \$ 8,327            | \$ 45,000           |
| GMP - Incentive                             | Pursuing             | \$ 25,466           | \$ 31,502           | \$ 5,255           | \$ 16,027           | \$ 3,016           | \$ 898             | \$ 4,011            | \$ 5,391            | \$ 6,131            | \$ 22,183           | \$ 119,880          |
| 3E Thermal - Incentive/Rebate               | Pursuing             | \$ 30,000           | \$ 24,000           |                    |                     |                    |                    |                     |                     |                     |                     | \$ 54,000           |
| EVT - Incentive                             | Pursuing             | \$ -                | \$ 20,000           | \$ 5,338           | \$ 16,279           | \$ 3,063           | \$ 912             | \$ 4,074            | \$ 5,476            | \$ 6,228            | \$ 22,533           | \$ 83,904           |
|   |                      |                     |                     |                    |                     |                    |                    |                     |                     |                     |                     | \$ -                |
| <b>TOTAL GRANTS</b>                         |                      | <b>\$ 2,784,066</b> | <b>\$ 350,109</b>   | <b>\$ 56,399</b>   | <b>\$ 1,333,924</b> | <b>\$ 32,366</b>   | <b>\$ 9,639</b>    | <b>\$ 609,527</b>   | <b>\$ 527,778</b>   | <b>\$ 490,409</b>   | <b>\$ 1,903,573</b> | <b>\$ 8,097,789</b> |
|   |                      |                     |                     |                    |                     |                    |                    |                     |                     |                     |                     |                     |
| TAX CREDITS                                 | Status               | 1A. LIHTC APTS      | 2B. NON-LIHTC APTS  | 2C. LOUNGE         | 3D. CHILDCARE       | 5K. OFFICE (LARGE) | 5L. OFFICE (SMALL) | 5G. KITCHEN/OFFICE  | 5H. SENIOR CENTER   | 5I. AUDITORIUM      | 5J. RECREATION      | TOTAL               |
| Inflation Reduction Act - Tax Credit Equity | MEP Pursuing         | \$ 308,698          | \$ 407,818          | \$ 66,871          | \$ 206,300          | \$ 43,257          | \$ 12,672          | \$ 70,666           | \$ 88,860           | \$ 99,343           | \$ 261,555          | \$ 1,566,040        |
| VHFA: LIHTC - Tax Credit Equity             | Board Meeting 5/22   | \$ 2,235,124        |                     |                    |                     |                    |                    |                     |                     |                     |                     | \$ 2,235,124        |
| RITC - Tax Credit Equity                    | Part 2 draft by 5/18 | \$ 974,888          | \$ 1,254,996        | \$ 209,344         | \$ 638,482          | \$ 120,135         | \$ 35,779          | \$ 159,794          | \$ 214,785          | \$ 244,253          | \$ 883,739          | \$ 4,736,196        |
| ERV: NMTC - Tax Credit Equity               | Intake Eval. 6/1     |                     | \$ 2,171,047        | \$ 267,128         | \$ 977,757          | \$ 159,236         | \$ 56,068          | \$ 338,564          | \$ 356,547          | \$ 354,512          | \$ 1,217,090        | \$ 5,897,949        |
| VDTC - State Tax Credit Equity              | Awarded              |                     | \$ 53,386           | \$ 8,905           | \$ 27,160           | \$ 5,110           | \$ 1,522           | \$ 6,797            | \$ 9,137            | \$ 10,390           | \$ 37,593           | \$ 160,000          |
|   |                      |                     |                     |                    |                     |                    |                    |                     |                     |                     |                     | \$ -                |
| <b>TOTAL TAX CREDITS</b>                    |                      | <b>\$ 3,518,711</b> | <b>\$ 3,887,246</b> | <b>\$ 552,248</b>  | <b>\$ 1,849,700</b> | <b>\$ 327,738</b>  | <b>\$ 106,041</b>  | <b>\$ 575,822</b>   | <b>\$ 669,328</b>   | <b>\$ 708,499</b>   | <b>\$ 2,399,976</b> | <b>\$14,595,309</b> |
|   |                      |                     |                     |                    |                     |                    |                    |                     |                     |                     |                     |                     |
| PRIVATE EQUITY                              | Status               | 1A. LIHTC APTS      | 2B. NON-LIHTC APTS  | 2C. LOUNGE         | 3D. CHILDCARE       | 5K. OFFICE (LARGE) | 5L. OFFICE (SMALL) | 5G. KITCHEN/OFFICE  | 5H. SENIOR CENTER   | 5I. AUDITORIUM      | 5J. RECREATION      | TOTAL               |
| Private Investment Capital                  | Raised               |                     | \$ 500,000          |                    |                     |                    |                    |                     |                     |                     |                     | \$ 500,000          |
| Permanent/Conventional Debt                 | In Due Diligence     |                     |                     |                    |                     |                    |                    |                     |                     |                     |                     | \$ -                |
| Differed Developer Fee/Private Investment   | Hale                 |                     |                     |                    |                     |                    |                    |                     |                     |                     |                     | \$ -                |
| UVM Extension - Office Build                | Conversation         |                     |                     |                    |                     |                    |                    |                     |                     |                     |                     | \$ -                |
| 10% in Vermont                              | Apply by 6/1         | \$ 48,933           | \$ 3,481,670        | \$ 410,735         | \$ 528,727          | \$ 203,563         | \$ 81,896          | \$ -                | \$ 57,575           | \$ 52,821           | \$ -                | \$ 4,865,920        |
|   |                      |                     |                     |                    |                     |                    |                    |                     |                     |                     |                     | \$ -                |
| <b>TOTAL PRIVATE EQUITY</b>                 |                      | <b>\$ 48,933</b>    | <b>\$ 3,981,670</b> | <b>\$ 410,735</b>  | <b>\$ 528,727</b>   | <b>\$ 203,563</b>  | <b>\$ 81,896</b>   | <b>\$ -</b>         | <b>\$ 57,575</b>    | <b>\$ 52,821</b>    | <b>\$ -</b>         | <b>\$ 5,365,920</b> |
|   |                      |                     |                     |                    |                     |                    |                    |                     |                     |                     |                     |                     |
| <b>TOTAL FUNDING ALL SOURCES</b>            |                      | <b>\$ 6,351,709</b> | <b>\$ 8,219,024</b> | <b>\$1,019,383</b> | <b>\$ 3,712,351</b> | <b>\$ 563,666</b>  | <b>\$ 197,576</b>  | <b>\$ 1,185,349</b> | <b>\$ 1,254,681</b> | <b>\$ 1,251,729</b> | <b>\$ 4,303,549</b> | <b>\$28,059,019</b> |

| <b>FUNDING SOURCES</b>                      |                      | <b>LIHTC CONDO #1</b>      | <b>NON-LIHTC CONDO #2</b>      |   |  | <b>TOTAL</b>         |
|---|----------------------|----------------------------|--------------------------------|---|--|----------------------|
| <b>GRANTS</b>                               | <b>Status</b>        | <b>1A. LIHTC APTS (15)</b> | <b>2B. NON-LIHTC APTS (22)</b> | <b>COMMERCIAL Lounge, Childcare, Office</b> | <b>COMMUNITY Recreation, Kitchen, Center</b> |                      |
| VHCB: ARPA-SFR                              | Board Meeting 6/26   | \$ 2,006,614               |                                | \$ -  | \$ -   | \$ 2,006,614         |
| DED: CRRP: Condo #1-LIHTC                   | Awarded              | \$ 500,000                 |                                | \$ -  | \$ -   | \$ 500,000           |
| DED: CRRP: Condo #2-NON-LIHTC               | Apply by 4/30        |                            |                                | \$ 742,470                                  | \$ 295,922                                   | \$ 1,038,392         |
| TOB: ARPA-LOCAL                             | Committed            | \$ -                       | \$ -                           | \$ -  | \$ 2,250,000                                 | \$ 2,250,000         |
| ACCD>DHCD>VCDP: CDBG                        | Board Meeting 6/8    | \$ 212,427                 | \$ 262,781                     | \$ 210,171                                  | \$ 314,621                                   | \$ 1,000,000         |
| NBRC: Catalist Program                      | LOI Sumbitted 4/21   | \$ -                       | \$ -                           | \$ 419,441                                  | \$ 580,559                                   | \$ 1,000,000         |
| BCRC: BFR - for CAP                         | Awarded              | \$ 9,559                   | \$ 11,825                      | \$ 9,458                                    | \$ 14,158                                    | \$ 45,000            |
| GMP - Incentive                             | Pursuing             | \$ 25,466                  | \$ 31,502                      | \$ 25,195                                   | \$ 37,717                                    | \$ 119,880           |
| 3E Thermal - Incentive/Rebate               | Pursuing             | \$ 30,000                  | \$ 24,000                      | \$ -  | \$ -   | \$ 54,000            |
| EVT - Incentive                             | Pursuing             | \$ -                       | \$ 20,000                      | \$ 25,592                                   | \$ 38,311                                    | \$ 83,904            |
|   |                      |                            |                                |   |  | \$ -                 |
| <b>TOTAL GRANTS</b>                         |                      | <b>\$ 2,784,066</b>        | <b>\$ 350,109</b>              | <b>\$ 1,432,328</b>                         | <b>\$ 3,531,287</b>                          | <b>\$ 8,097,789</b>  |
|   |                      |                            |                                |   |  |                      |
| <b>TAX CREDITS</b>                          | <b>Status</b>        | <b>1A. LIHTC APTS</b>      | <b>2B. NON-LIHTC APTS</b>      | <b>COMMERCIAL Lounge, Childcare, Office</b> | <b>COMMUNITY Recreation, Kitchen, Center</b> | <b>TOTAL</b>         |
| Inflation Reduction Act - Tax Credit Equity | MEP Pursuing         | \$ 308,698                 | \$ 407,818                     | \$ 329,100                                  | \$ 520,424                                   | \$ 1,566,040         |
| VHFA: LIHTC - Tax Credit Equity             | Board Meeting 5/22   | \$ 2,235,124               |                                | \$ -  | \$ -   | \$ 2,235,124         |
| RITC - Tax Credit Equity                    | Part 2 draft by 5/18 | \$ 974,888                 | \$ 1,254,996                   | \$ 1,003,741                                | \$ 1,502,572                                 | \$ 4,736,196         |
| ERV: NMTC - Tax Credit Equity               | Intake Eval. 6/1     |                            | \$ 2,171,047                   | \$ 1,460,189                                | \$ 2,266,713                                 | \$ 5,897,949         |
| VDTC - State Tax Credit Equity              | Awarded              |                            | \$ 53,386                      | \$ 42,698                                   | \$ 63,917                                    | \$ 160,000           |
|   |                      |                            |                                |   |  |                      |
| <b>TOTAL TAX CREDITS</b>                    |                      | <b>\$ 3,518,711</b>        | <b>\$ 3,887,246</b>            | <b>\$ 2,835,727</b>                         | <b>\$ 4,353,625</b>                          | <b>\$ 14,595,309</b> |
|   |                      |                            |                                |   |  |                      |
| <b>PRIVATE EQUITY</b>                       | <b>Status</b>        | <b>1A. LIHTC APTS</b>      | <b>2B. NON-LIHTC APTS</b>      | <b>COMMERCIAL Lounge, Childcare, Office</b> | <b>COMMUNITY Recreation, Kitchen, Center</b> | <b>TOTAL</b>         |
| Private Investment Capital                  | Raised               |                            | \$ 500,000                     | \$ -  | \$ -   | \$ 500,000           |
| 10% in Vermont                              | Apply by 6/1         | \$ 48,933                  | \$ 3,481,670                   | \$ 1,224,921                                | \$ 110,397                                   | \$ 4,865,920         |
|   |                      |                            |                                |   |  |                      |
| <b>TOTAL PRIVATE EQUITY</b>                 |                      | <b>\$ 48,933</b>           | <b>\$ 3,981,670</b>            | <b>\$ 1,224,921</b>                         | <b>\$ 110,397</b>                            | <b>\$ 5,365,920</b>  |
|   |                      |                            |                                |   |  |                      |
| <b>TOTAL FUNDING ALL SOURCES</b>            |                      | <b>\$ 6,351,709</b>        | <b>\$ 8,219,024</b>            | <b>\$ 5,492,977</b>                         | <b>\$ 7,995,308</b>                          | <b>\$ 28,059,019</b> |

# AREA PLAN



**First Floor**



**Basement**



**Second Floor**

| <b>Benn High Gross Square Foot Area Plan</b> |                             |                |              |                   |
|--|-----------------------------|----------------|--------------|-------------------|
| <b>AREA</b>                                  | <b>Funding</b>              | <b>Condo #</b> | <b>Space</b> | <b>Use</b>        |
| <b>1</b>                                     | <b>LIHTC APARTMENTS</b>     |                |              |                   |
|  | LIHTC                       | 1              | <b>A</b>     | < 60% AMI Apts.   |
|  | LIHTC                       | 1              |              | Laundry           |
|  | LIHTC                       | 1              |              | Storage           |
| LIHTC  | 1                           | Common Space   |              |                   |
| <b>2</b>                                     | <b>NON-LIHTC APARTMENTS</b> |                |              |                   |
|  | NON-LIHTC                   | 2              | <b>B</b>     | > = 60% AMI Apts. |
|  | NON-LIHTC                   | 2              |              | Common Space      |
| NON-LIHTC                                    | 2                           | <b>C</b>       | Lounge       |                   |
| <b>3</b>                                     | NON-LIHTC                   | 2              | <b>D</b>     | Childcare         |
| <b>4</b>                                     | <b>COMMON/SERVICE AREA</b>  |                |              |                   |
|  | Both                        | 1 & 2          | <b>E</b>     | Common Space      |
|  | Both                        | 1 & 2          |              | Elevator          |
| Both   | 1 & 2                       | <b>F</b>       | Mechanical   |                   |
| <b>5</b>                                     | <b>COMMUNITY SPACE</b>      |                |              |                   |
|  | NON-LIHTC                   | 2              | <b>G</b>     | Kitchen           |
|  | NON-LIHTC                   | 2              |              | Office            |
|  | NON-LIHTC                   | 2              | <b>H</b>     | Senior Center     |
|  | NON-LIHTC                   | 2              | <b>I</b>     | Auditorium        |
|  | NON-LIHTC                   | 2              | <b>J</b>     | GYM/Locker/Ex. #2 |
|  | NON-LIHTC                   | 2              |              | Recreation        |
|  | NON-LIHTC                   | 2              | <b>K</b>     | Office            |
|  | NON-LIHTC                   | 2              | <b>L</b>     | Office            |
| NON-LIHTC                                    | 2                           | <b>M</b>       | Common Space |                   |

