

A photograph of a street scene in Bennington, Vermont. In the foreground, there are lush green trees. A utility pole on the left has an orange banner that reads "Bennington Downtown" and a photo of a baseball player. A dark green semi-transparent banner across the middle contains the title "Health Equity in Bennington" in white. Below it, another dark green semi-transparent banner contains the name "Rory Price, MPH" and the affiliation "Bennington District Office, Vermont Department of Health" in white. The background shows a street with parked cars, buildings, and a sign for "Historic Bennington".

Health Equity in Bennington

Rory Price, MPH

Bennington District Office, Vermont Department of Health

1 Understanding health equity



① Understanding health equity

② Bennington health inequities



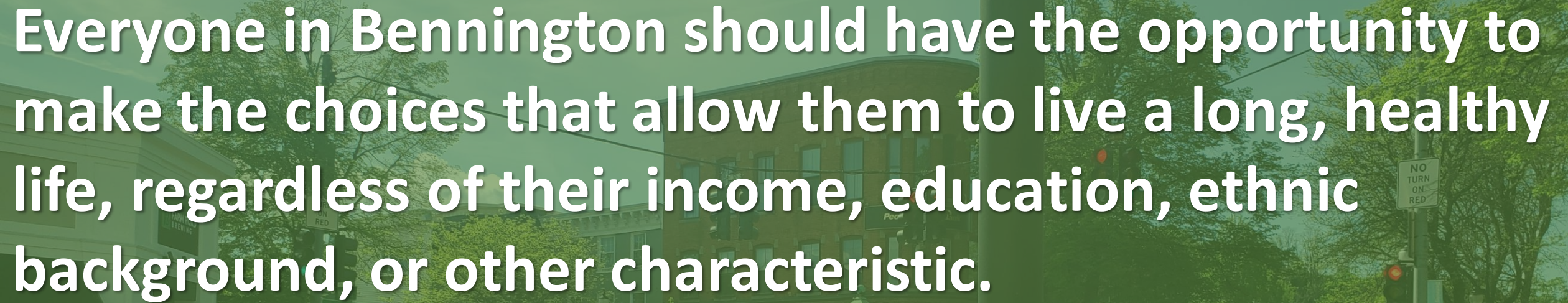
- 
- ① Understanding health equity
 - ② Bennington health inequities
 - ③ Town projects and their relation to health equity

- 
- ① Understanding health equity
 - ② Bennington health inequities
 - ③ Town projects and their relation to health equity
 - ④ Role and activities of the Bennington District Office

- 
- 1 Understanding health equity
 - 2 Bennington health inequities
 - 3 Town projects and their relation to health equity
 - 4 Role and activities of the Bennington District Office
 - 5 Questions & comments

Health starts – long before illness – in our homes, our schools, and our jobs.





Everyone in Bennington should have the opportunity to make the choices that allow them to live a long, healthy life, regardless of their income, education, ethnic background, or other characteristic.

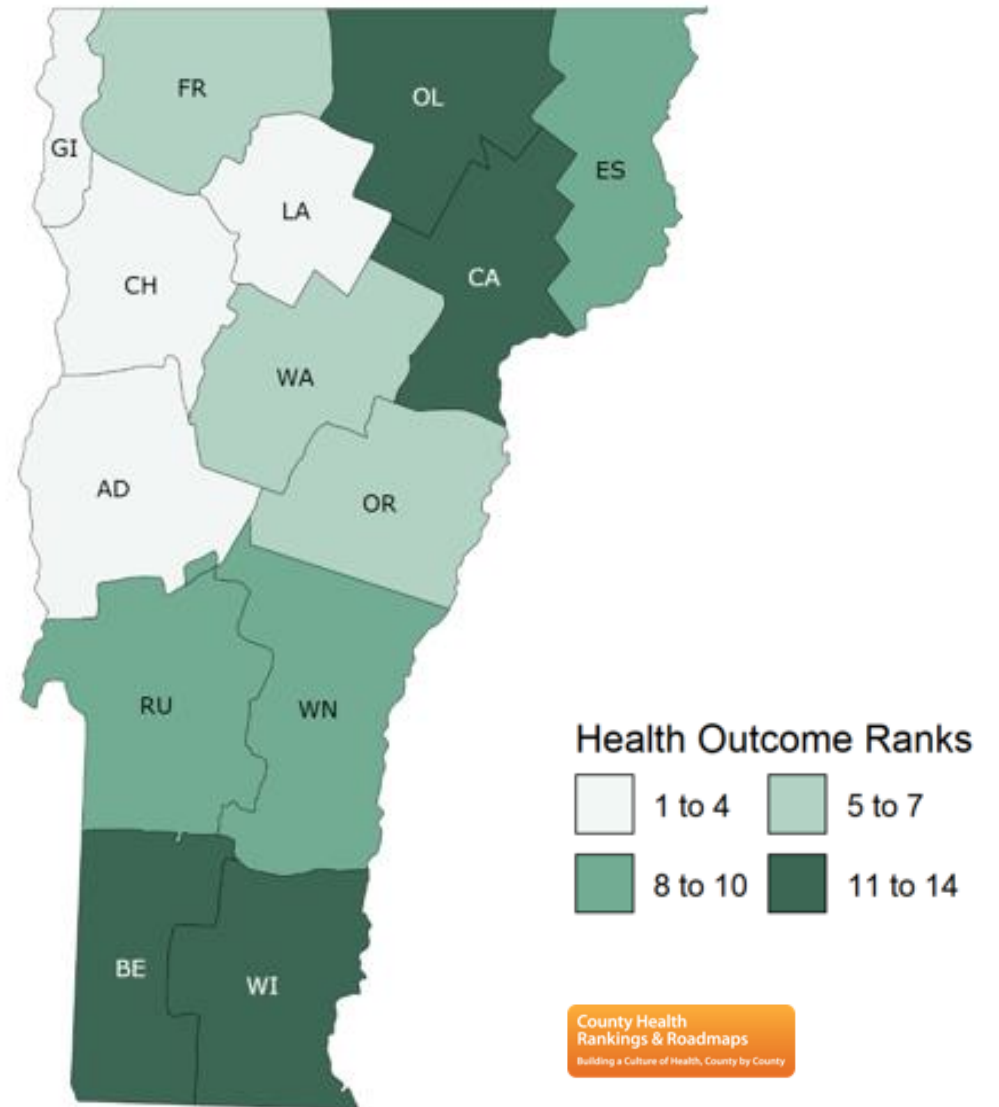


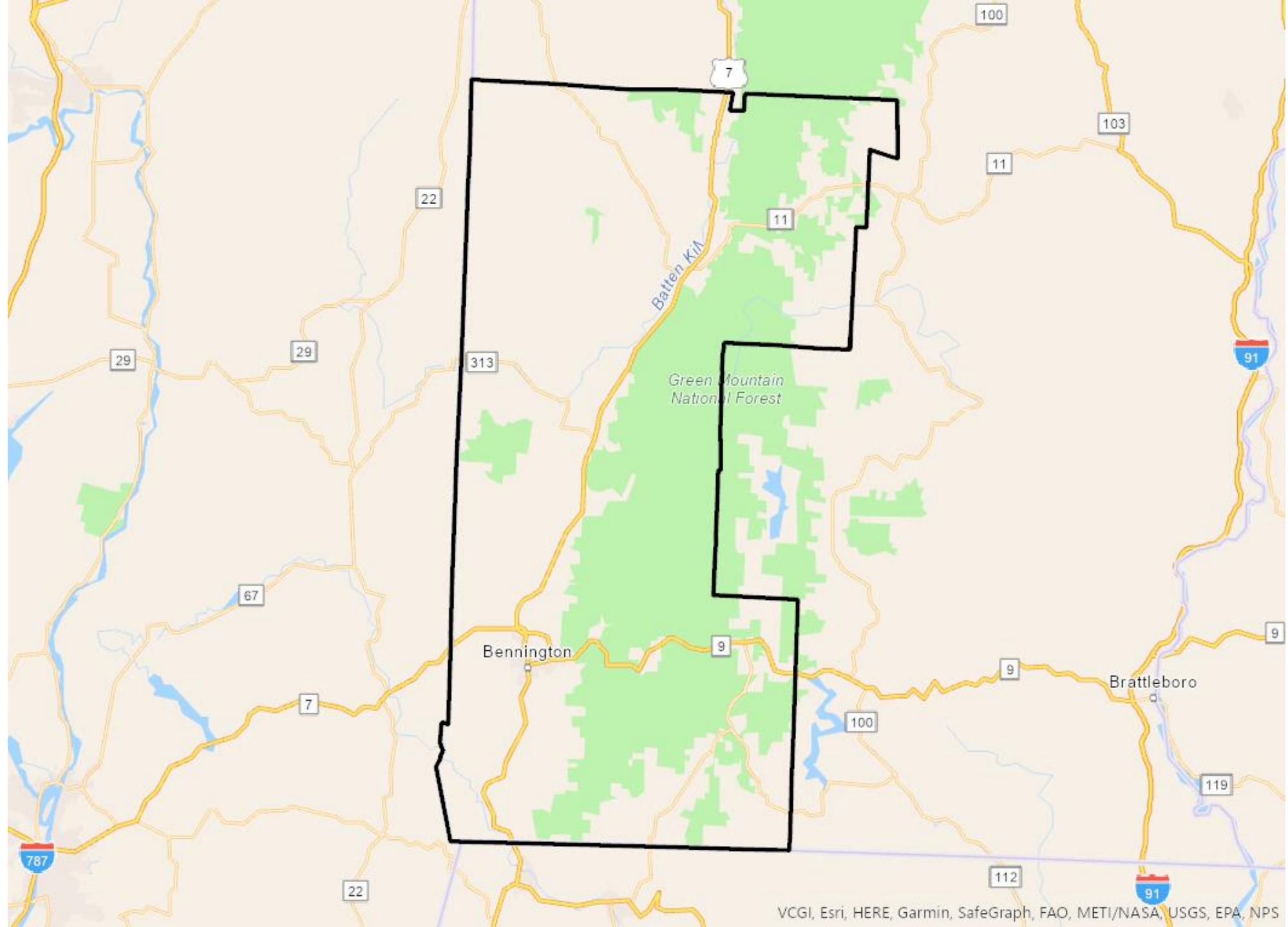
2022 Vermont Health Outcomes Rankings

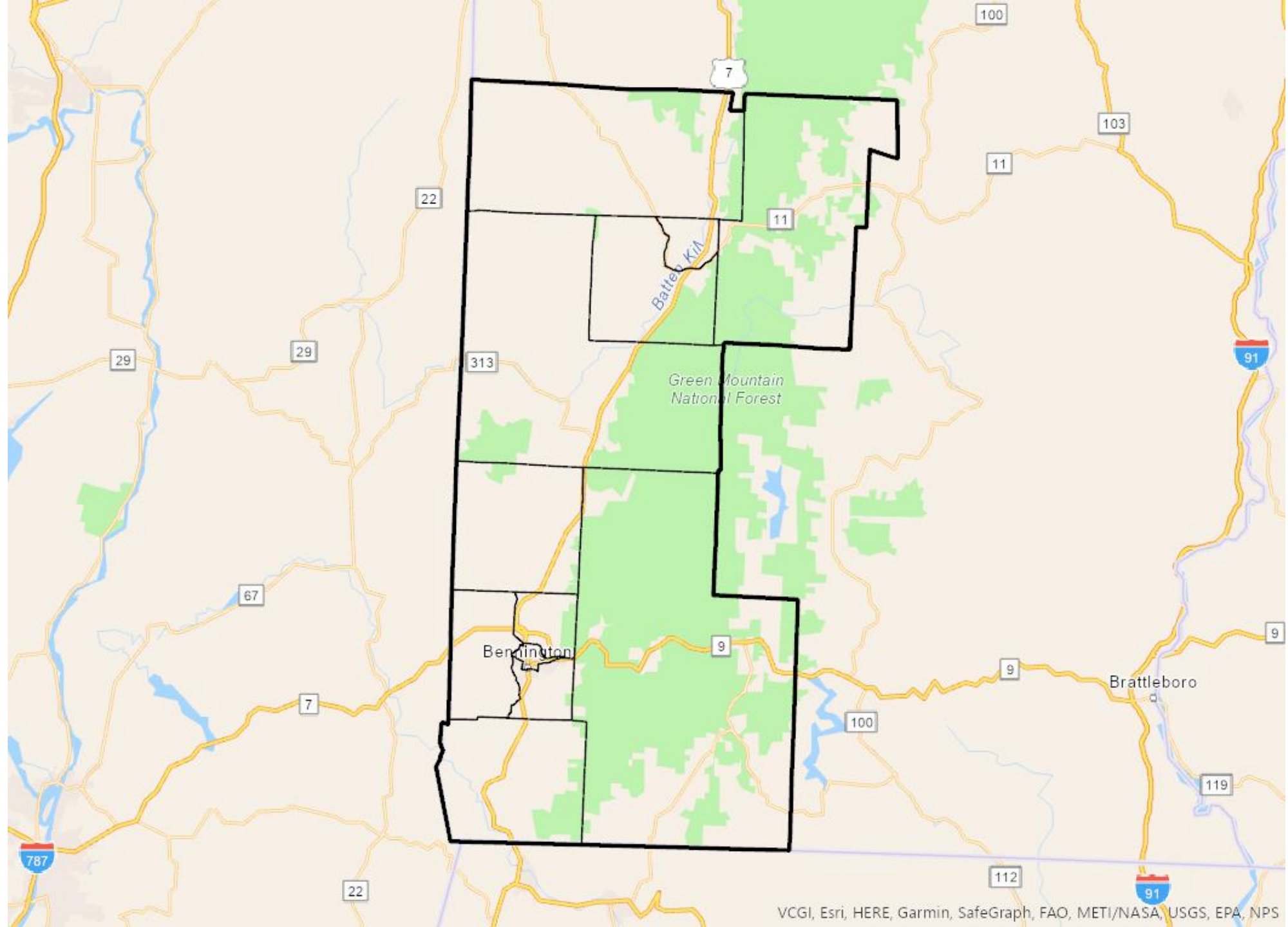
Bennington County has landed 13th out of Vermont's 14 counties in a 2022 ranking of health outcomes.

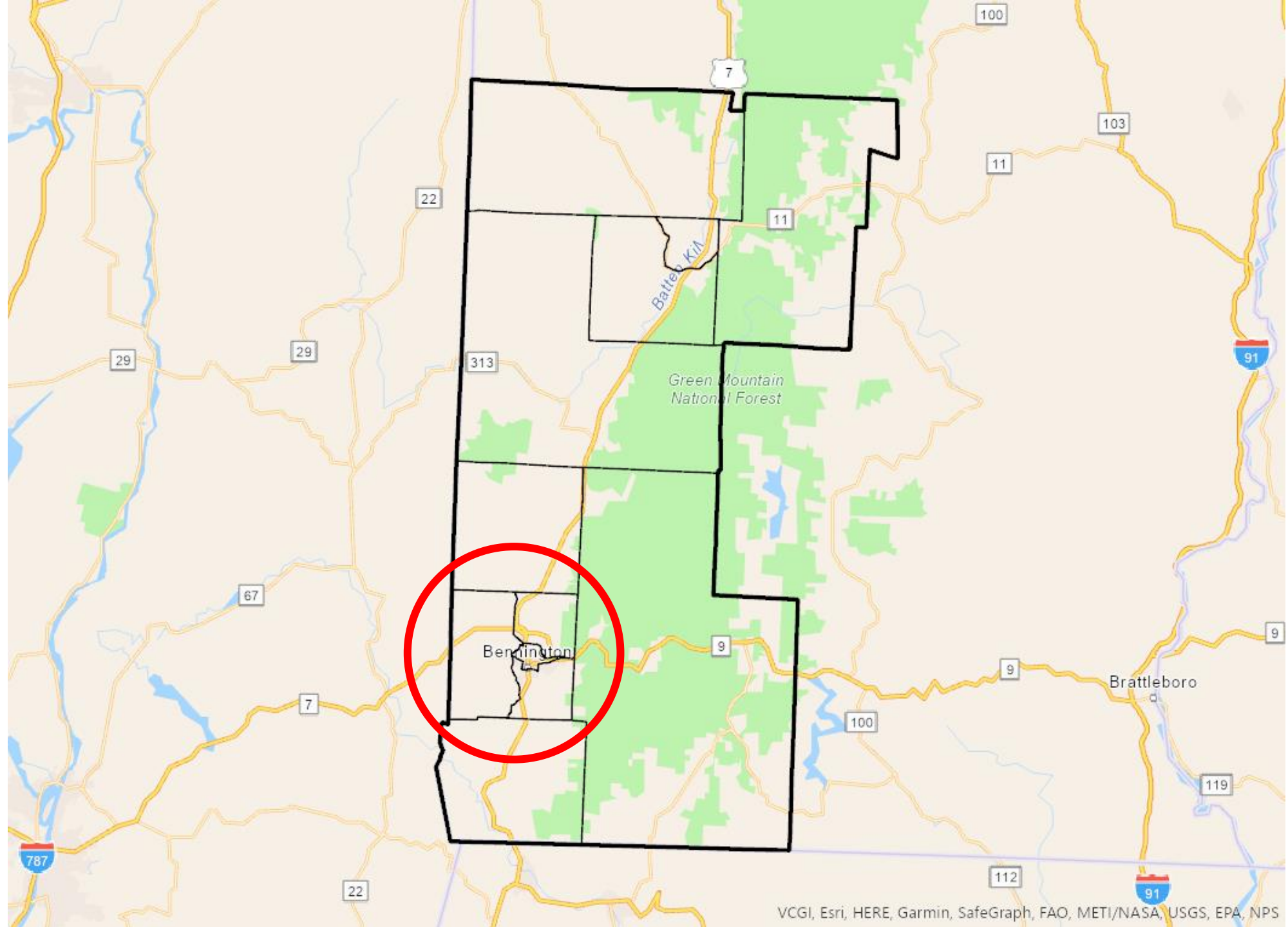
The County Health Rankings are based on a model of understanding health that includes a range of factors that ultimately influence how long and how well we live.

Counties are ranked to understand the unique needs facing each community, and to provide context for action and investment in population health.

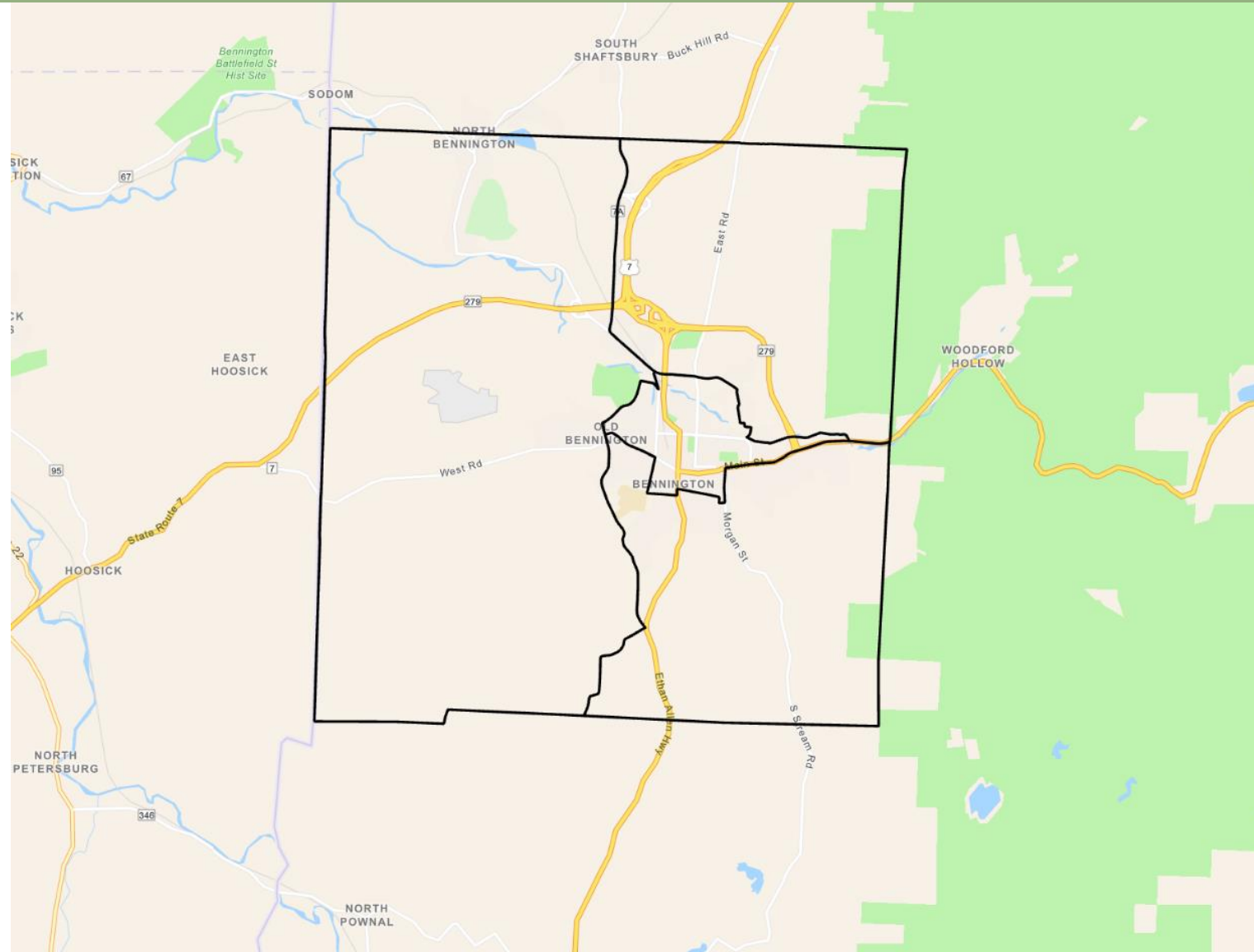




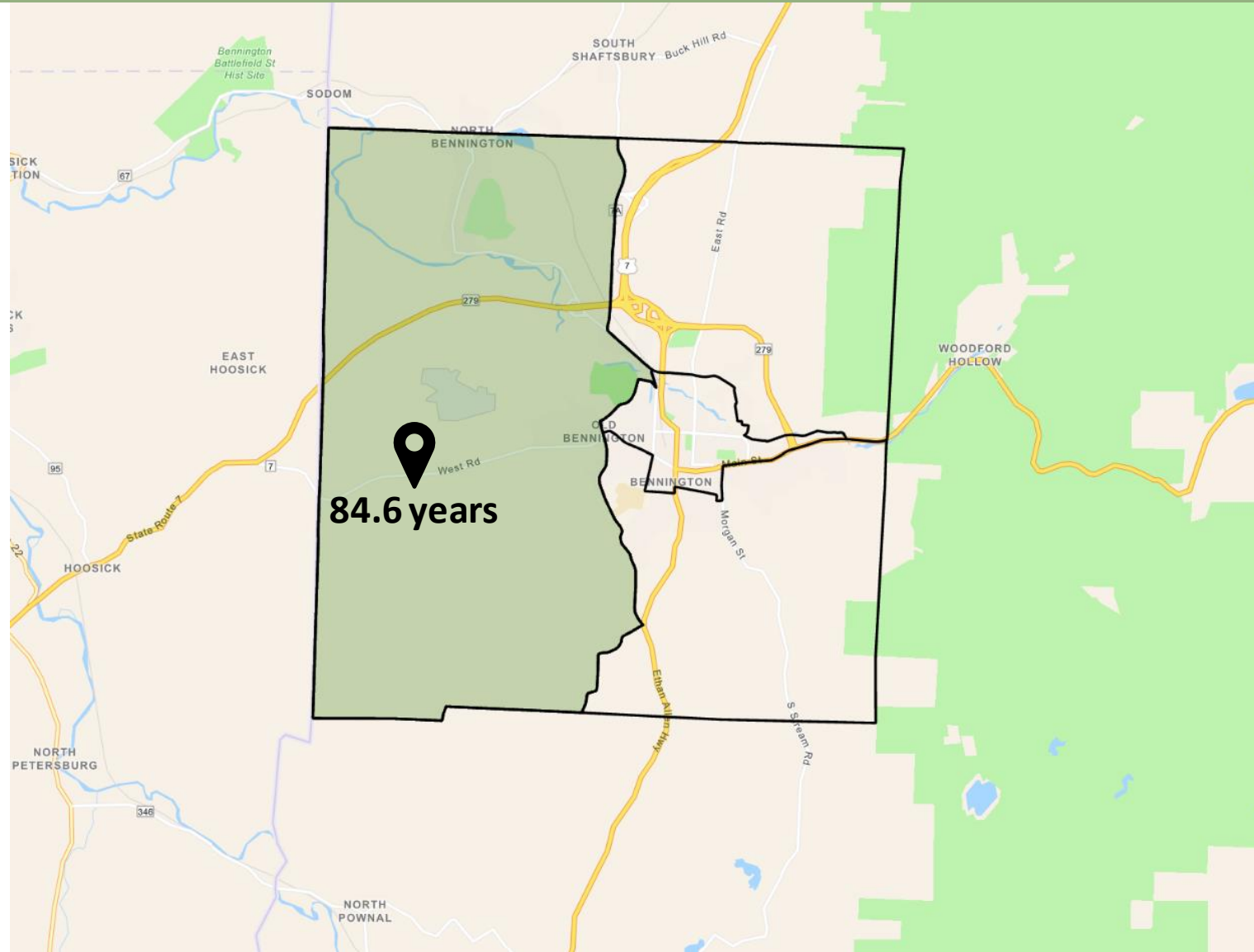




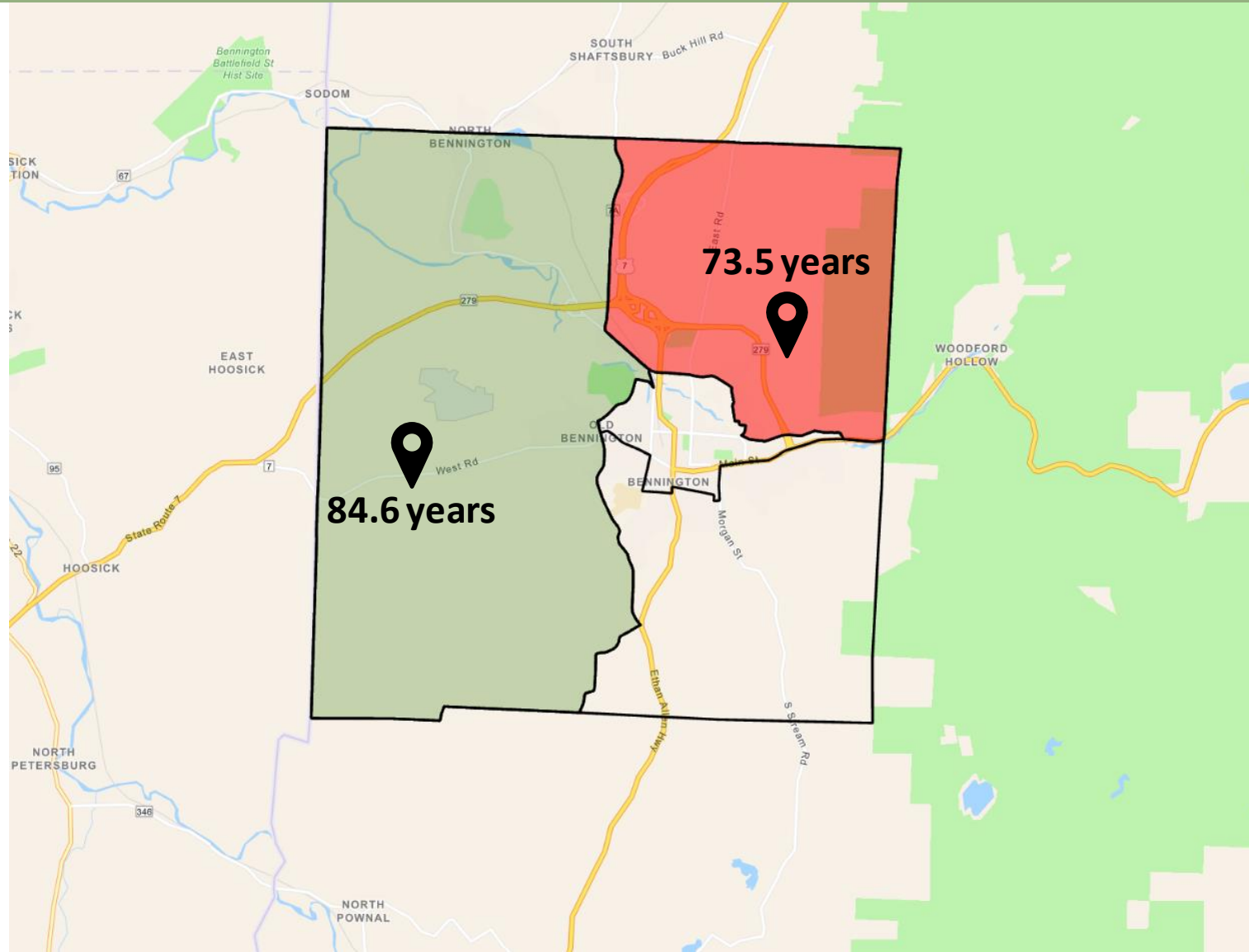
Life Expectancy



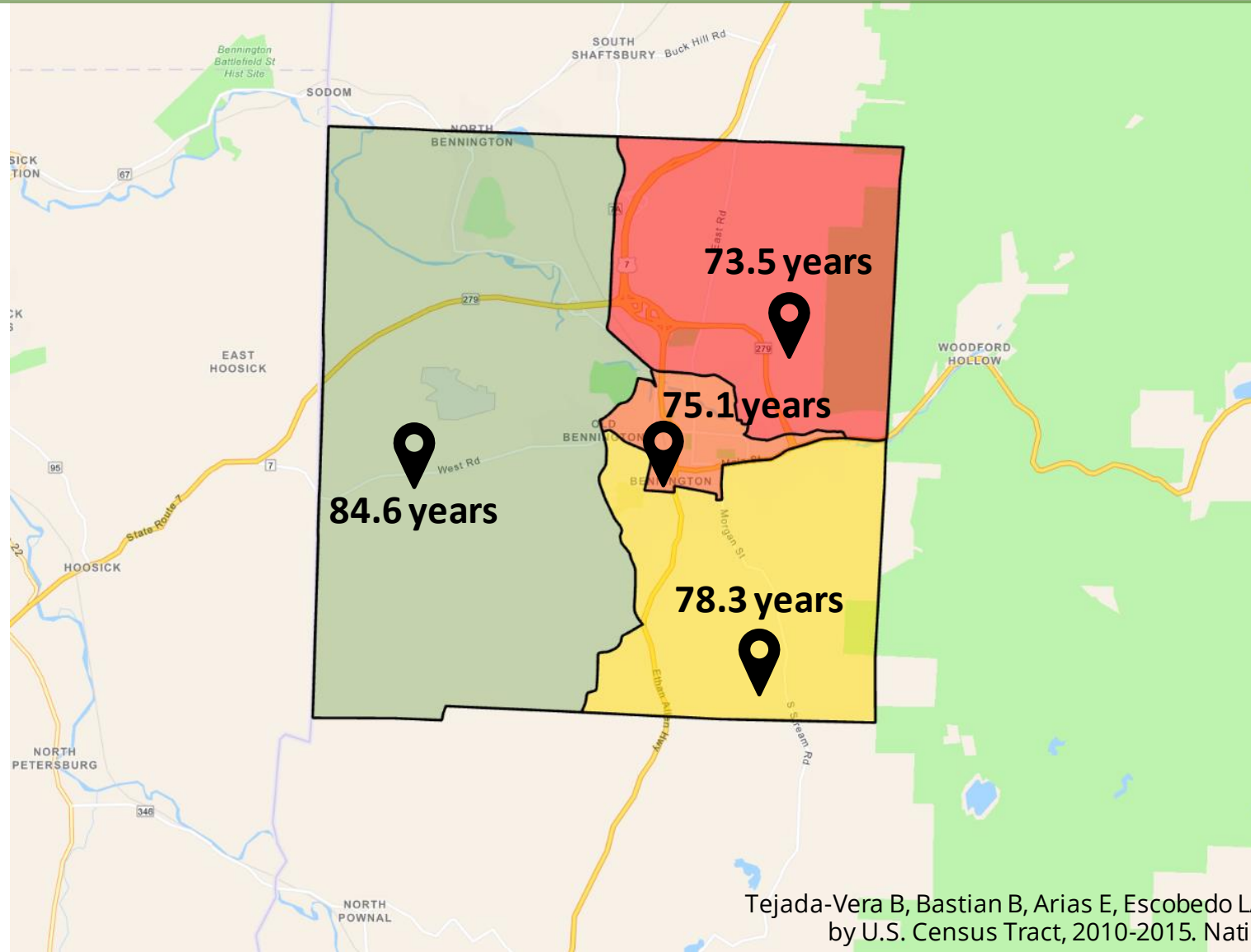
Life Expectancy



Life Expectancy



Life Expectancy



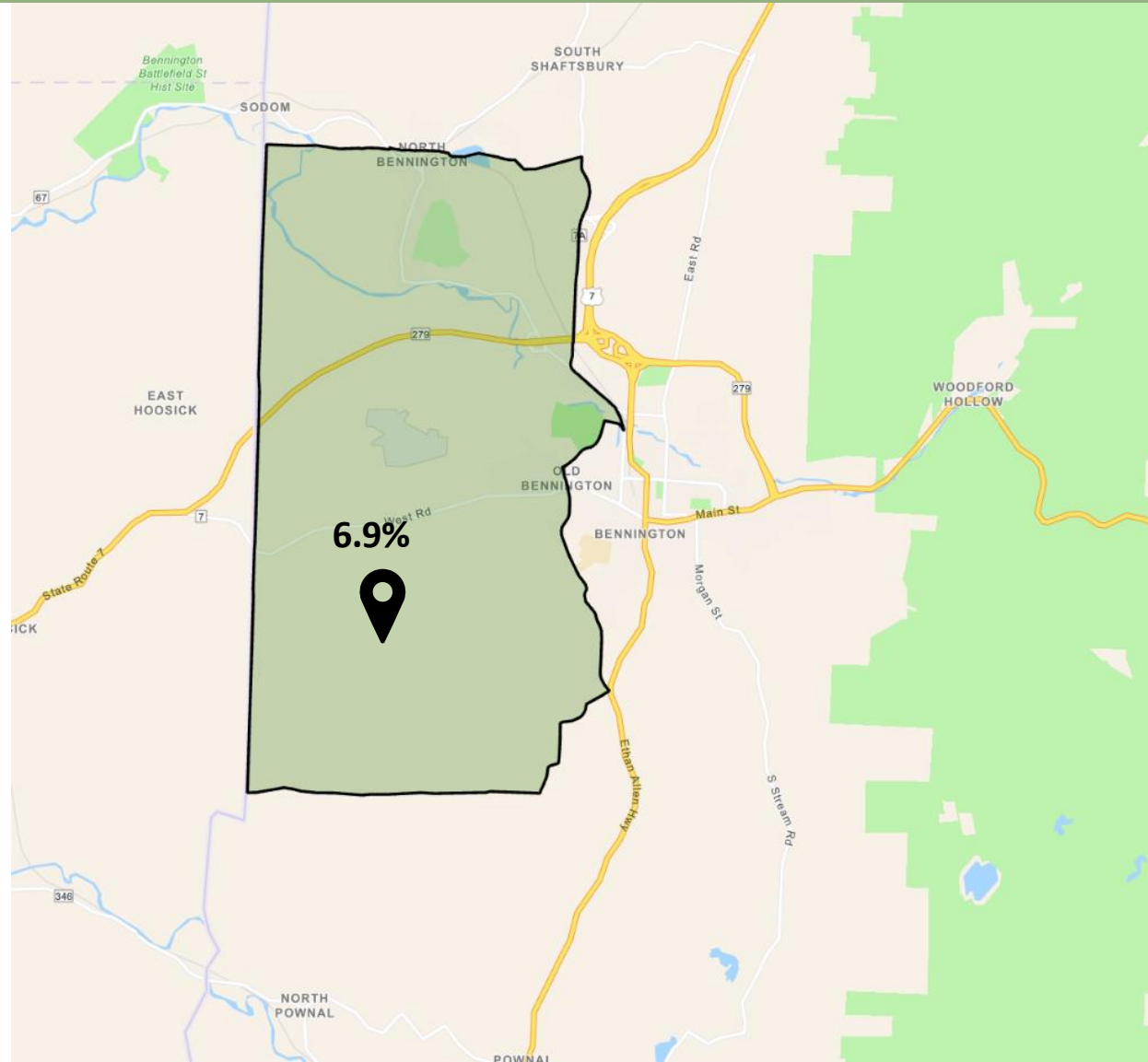
Tejada-Vera B, Bastian B, Arias E, Escobedo LA., Salant B, Life Expectancy Estimates by U.S. Census Tract, 2010-2015. National Center for Health Statistics. 2020.



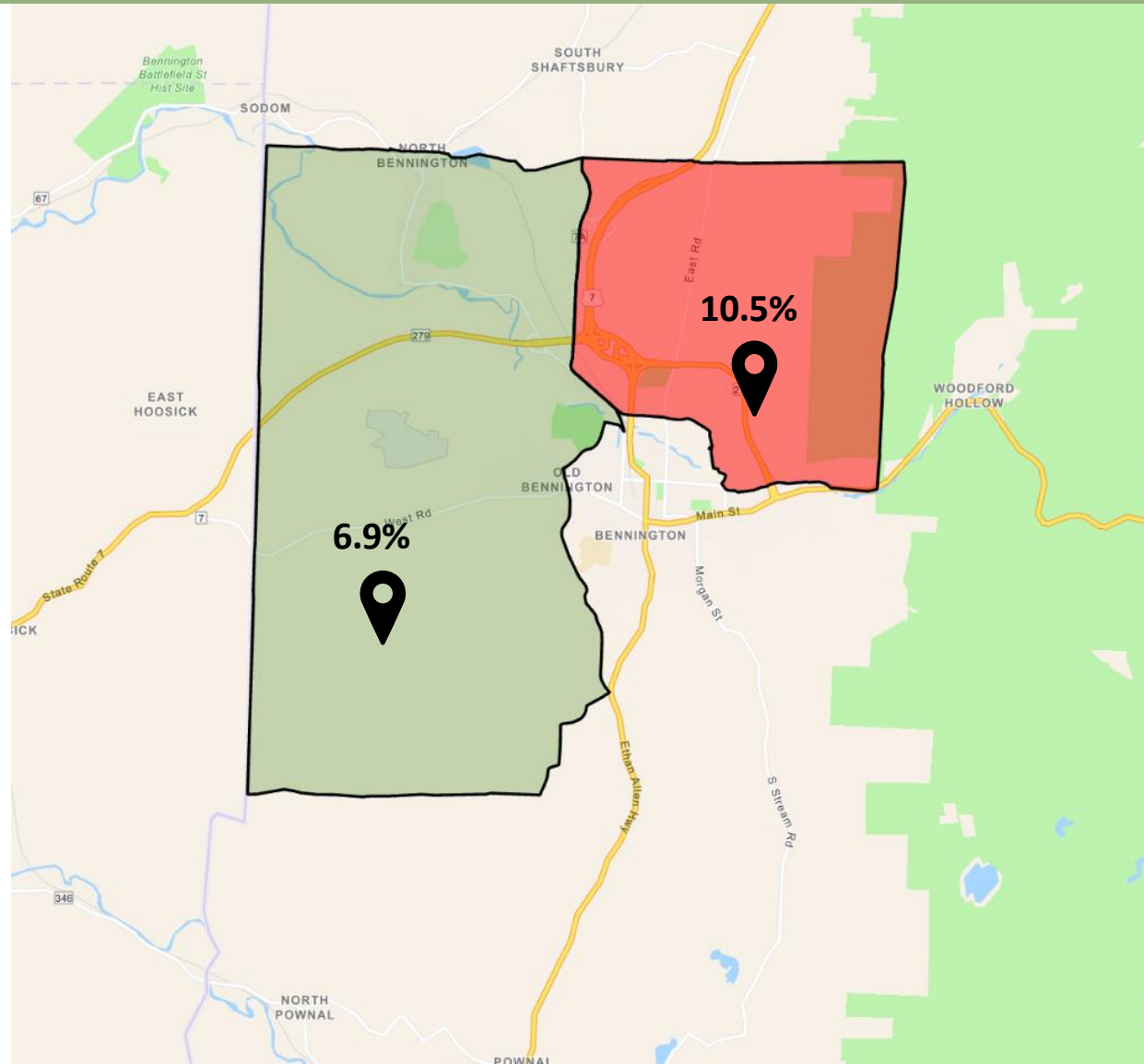
There are too many people living in Bennington who don't have the same opportunity to be healthy as others, whose circumstances have made them vulnerable to poor health.



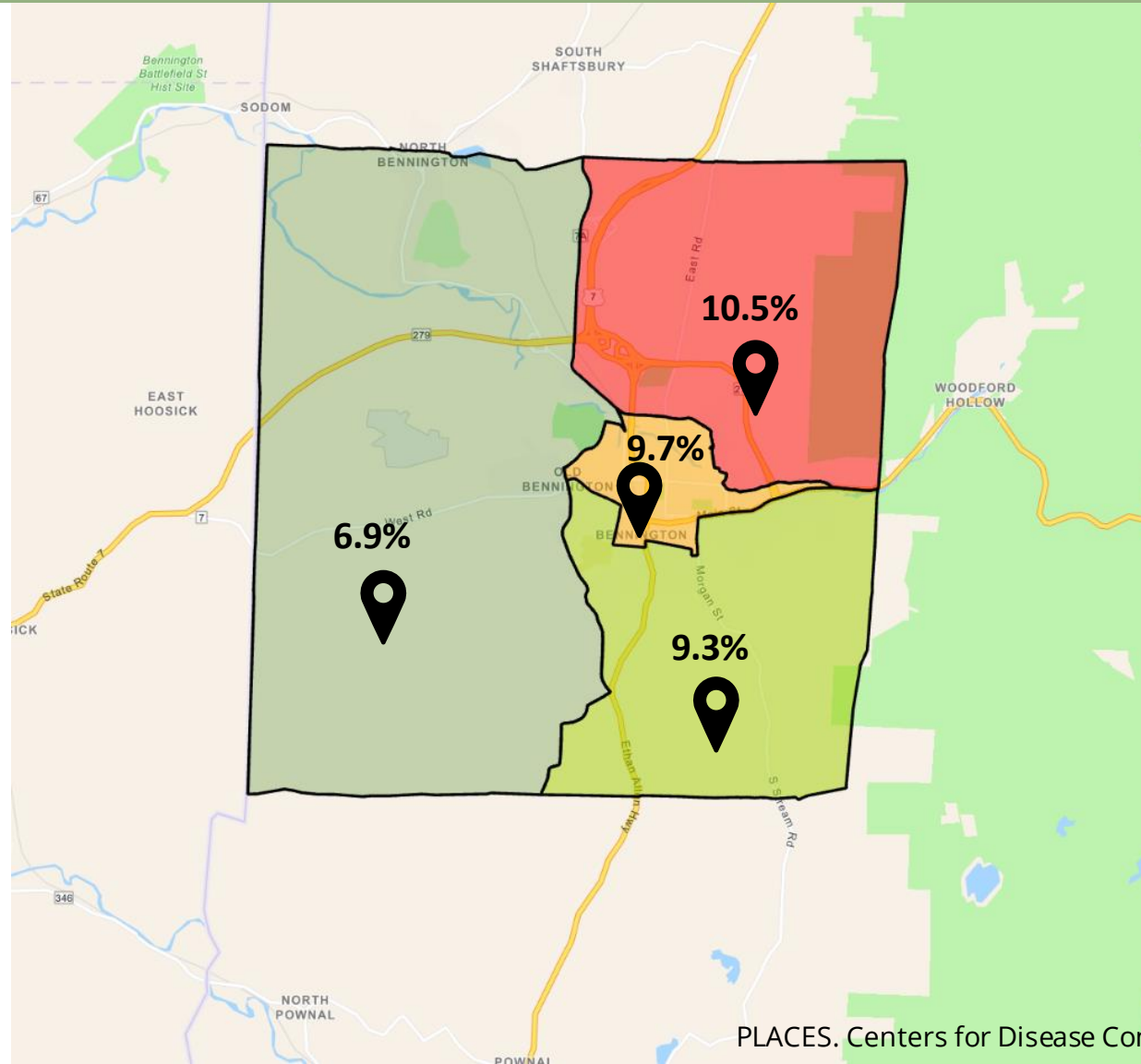
Diabetes Prevalence



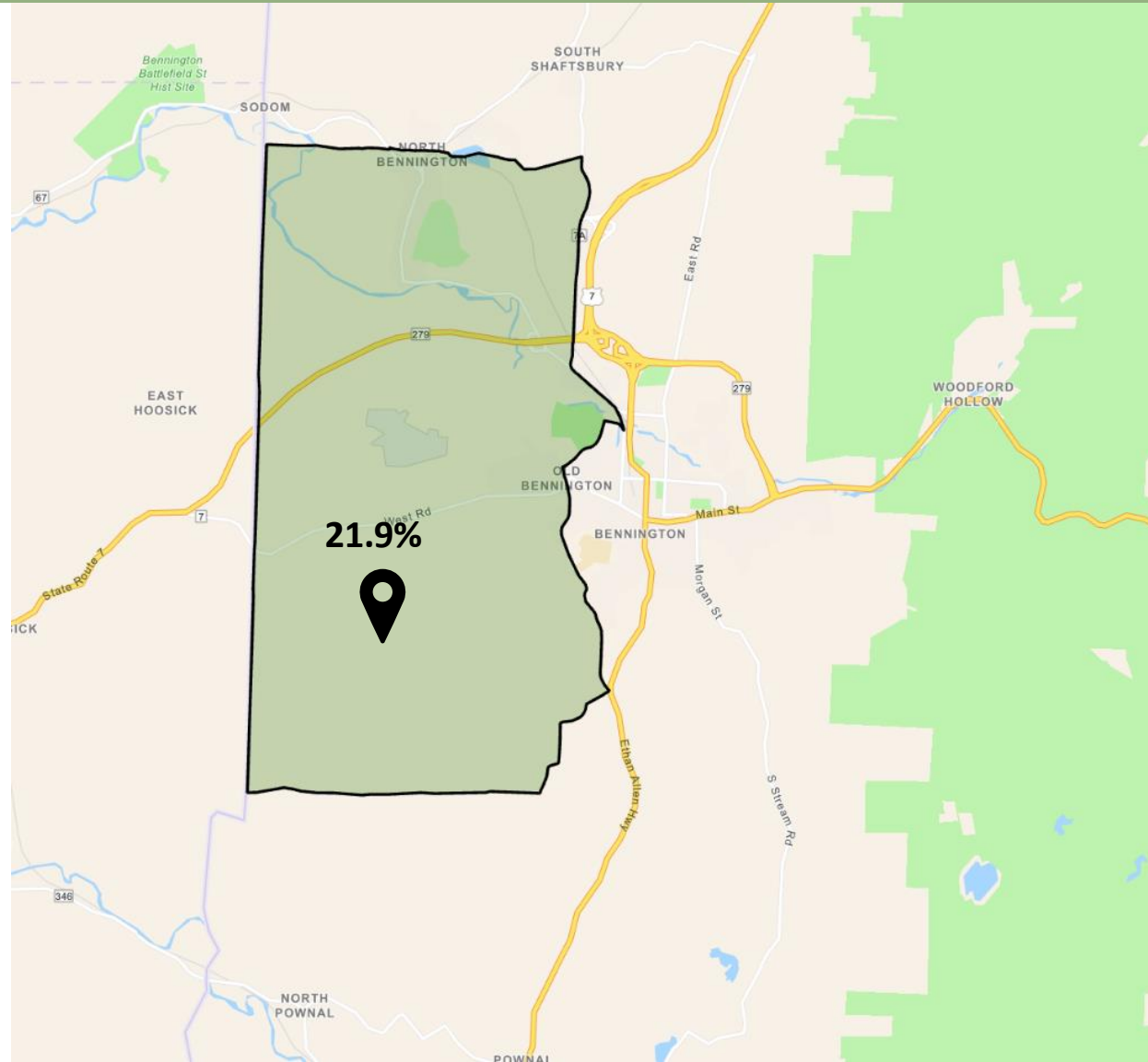
Diabetes Prevalence



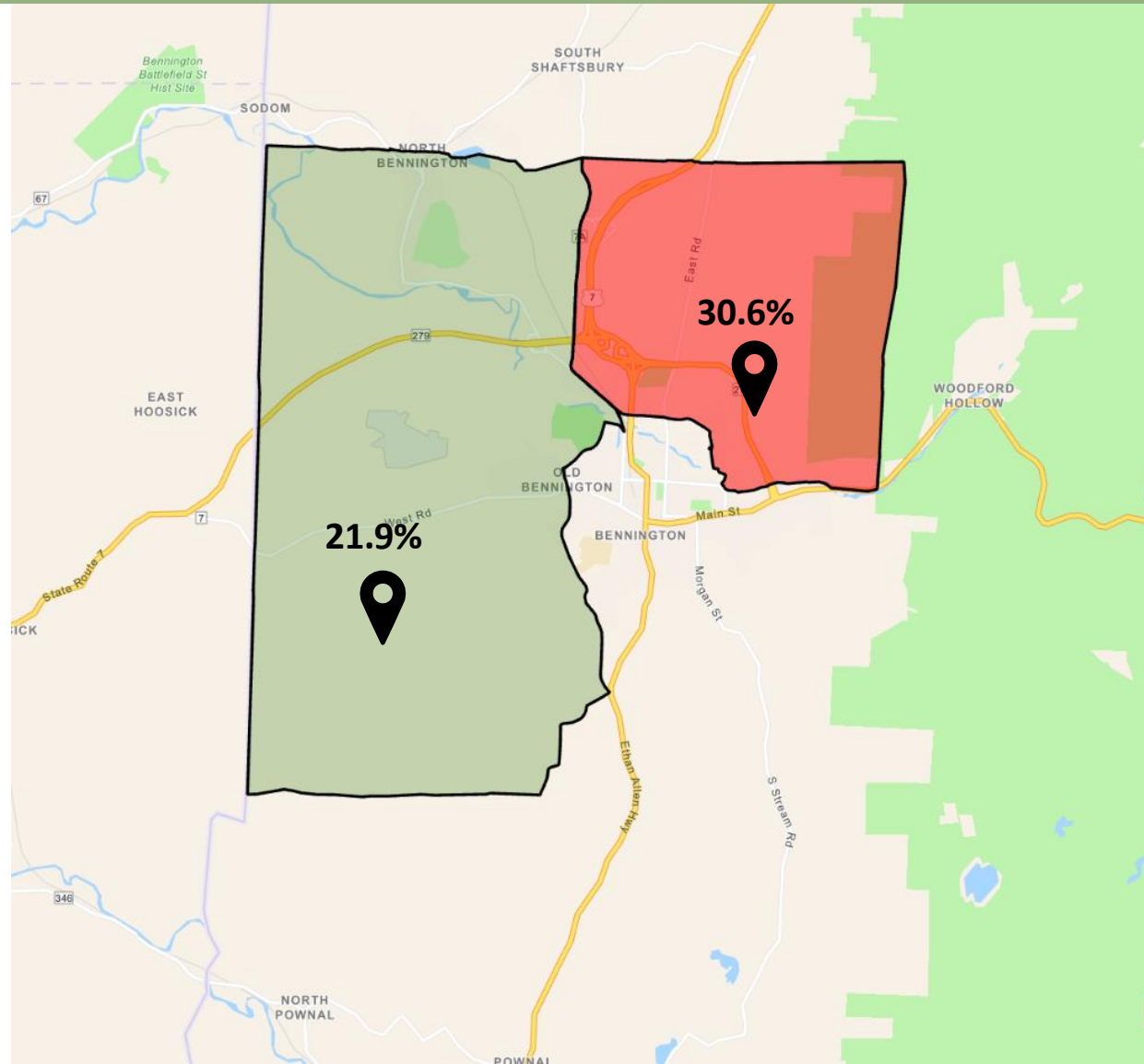
Diabetes Prevalence



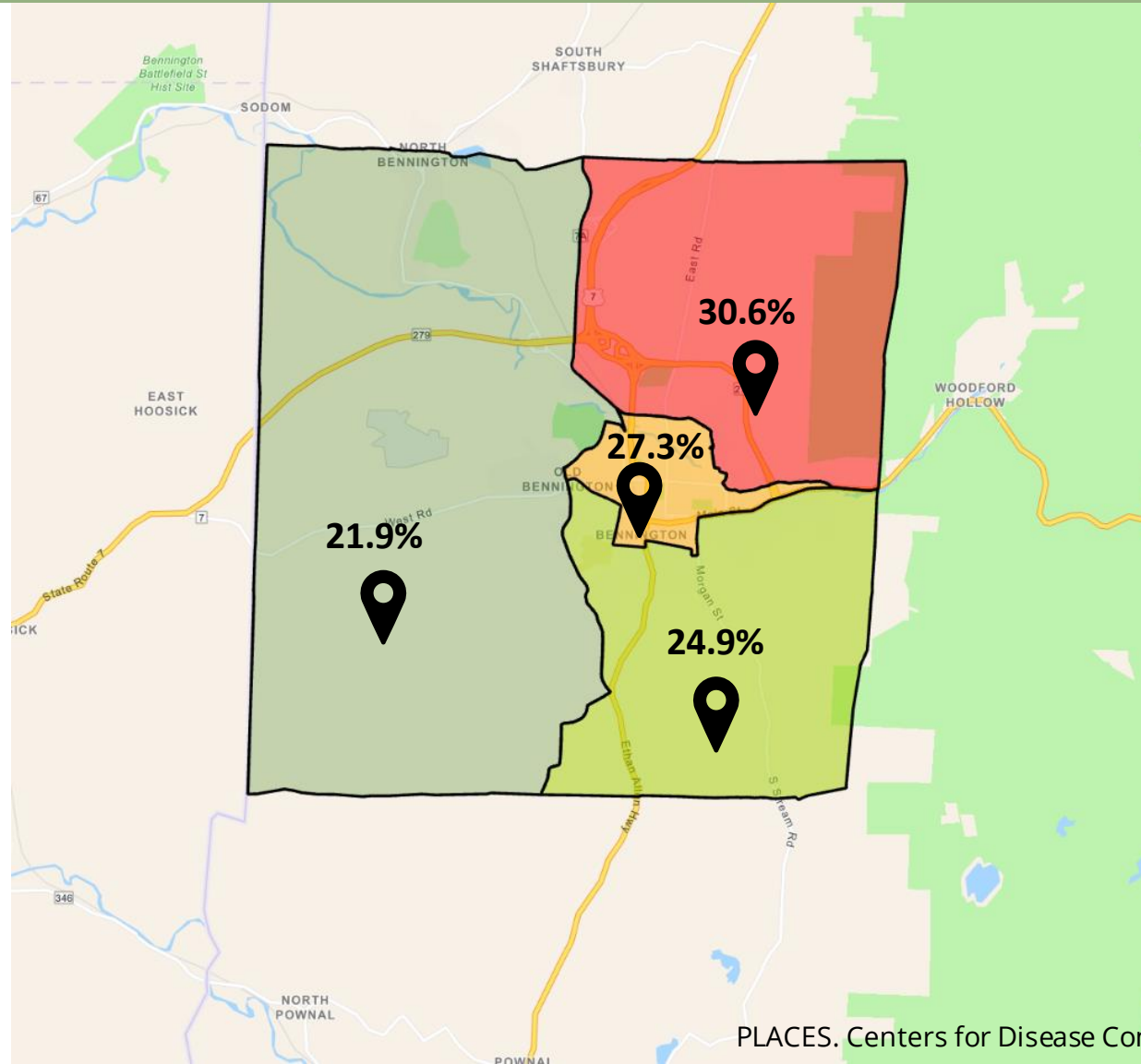
Obesity Prevalence



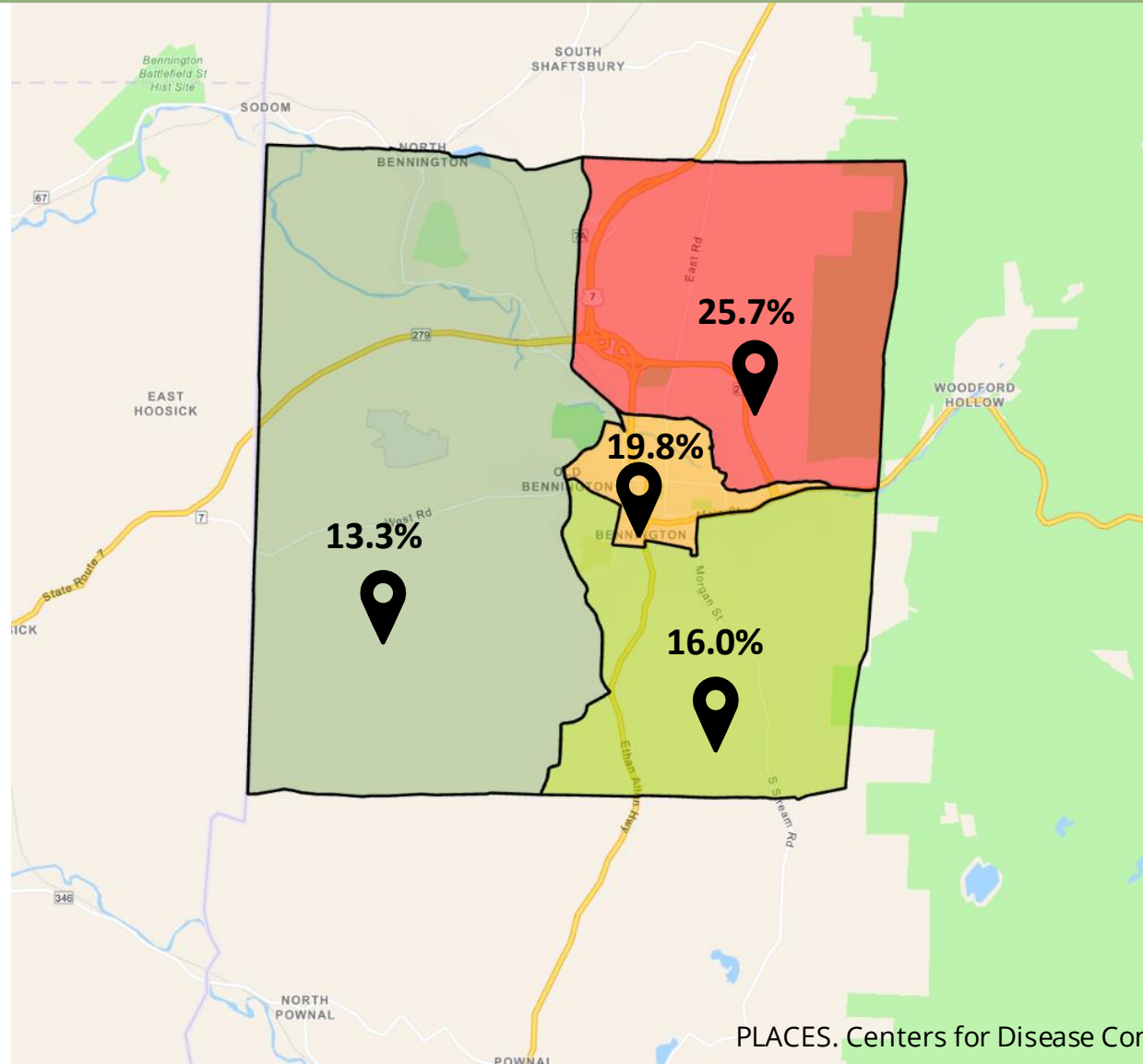
Obesity Prevalence



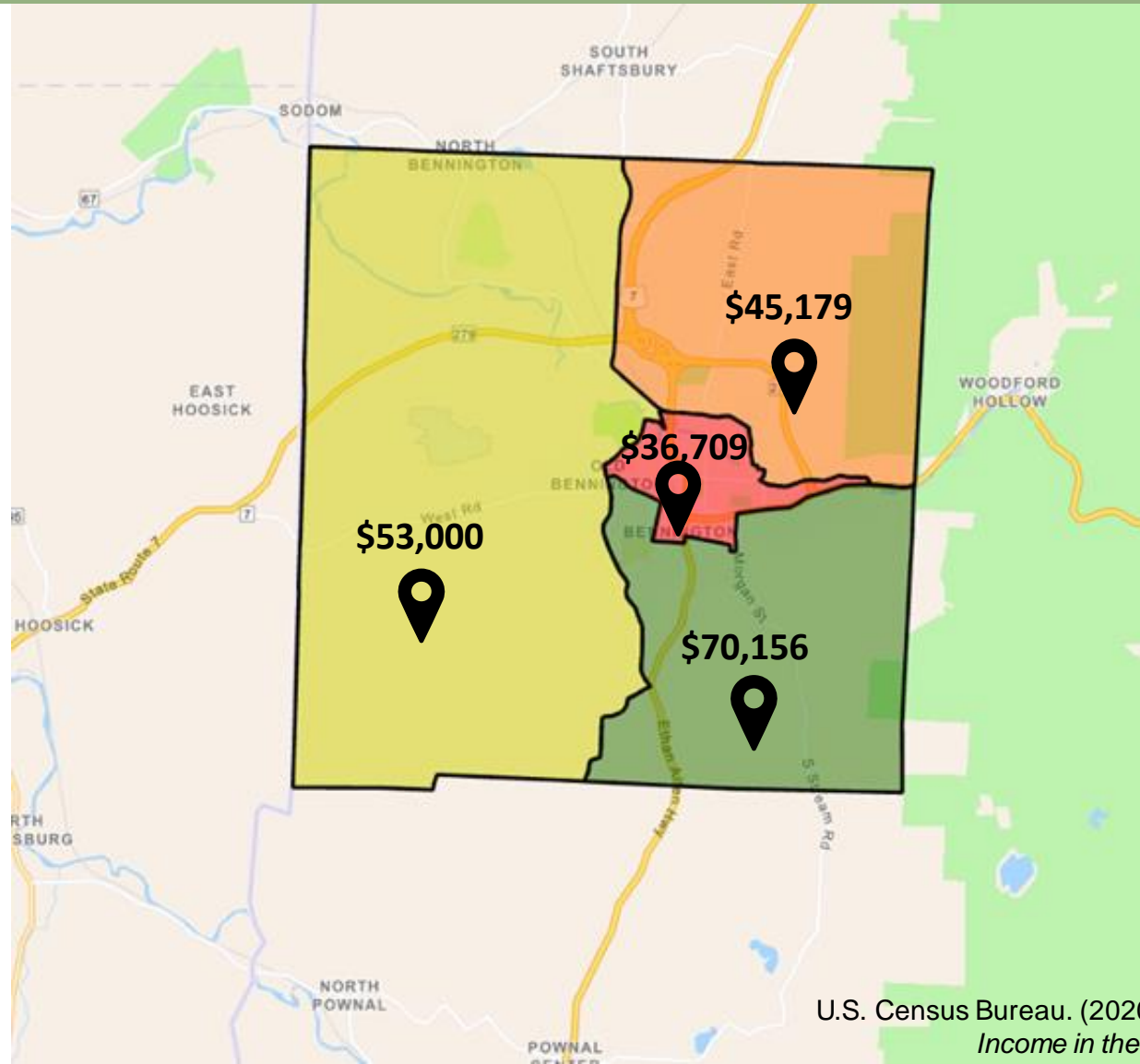
Obesity Prevalence



Smoking Prevalence

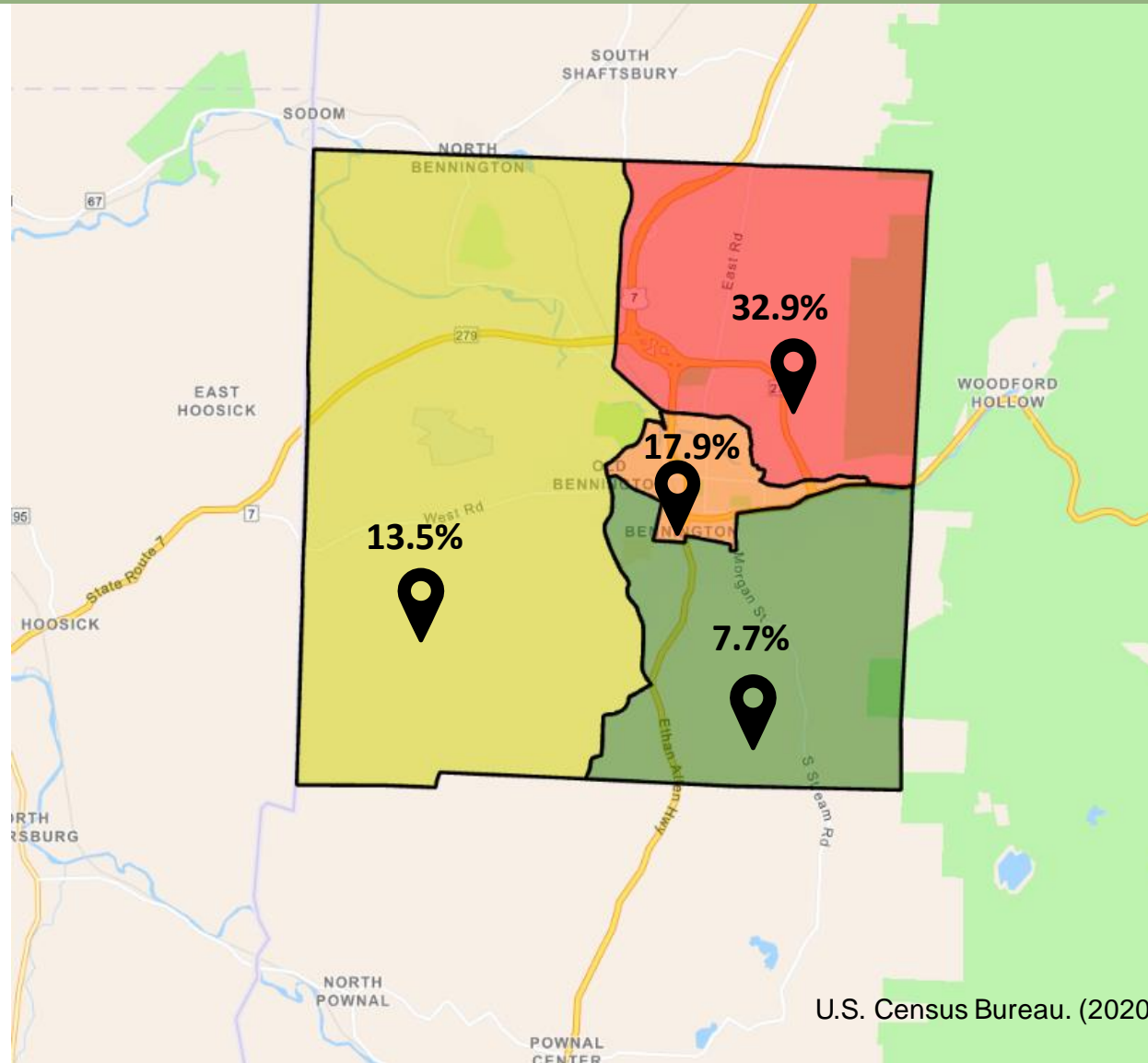


Median Income



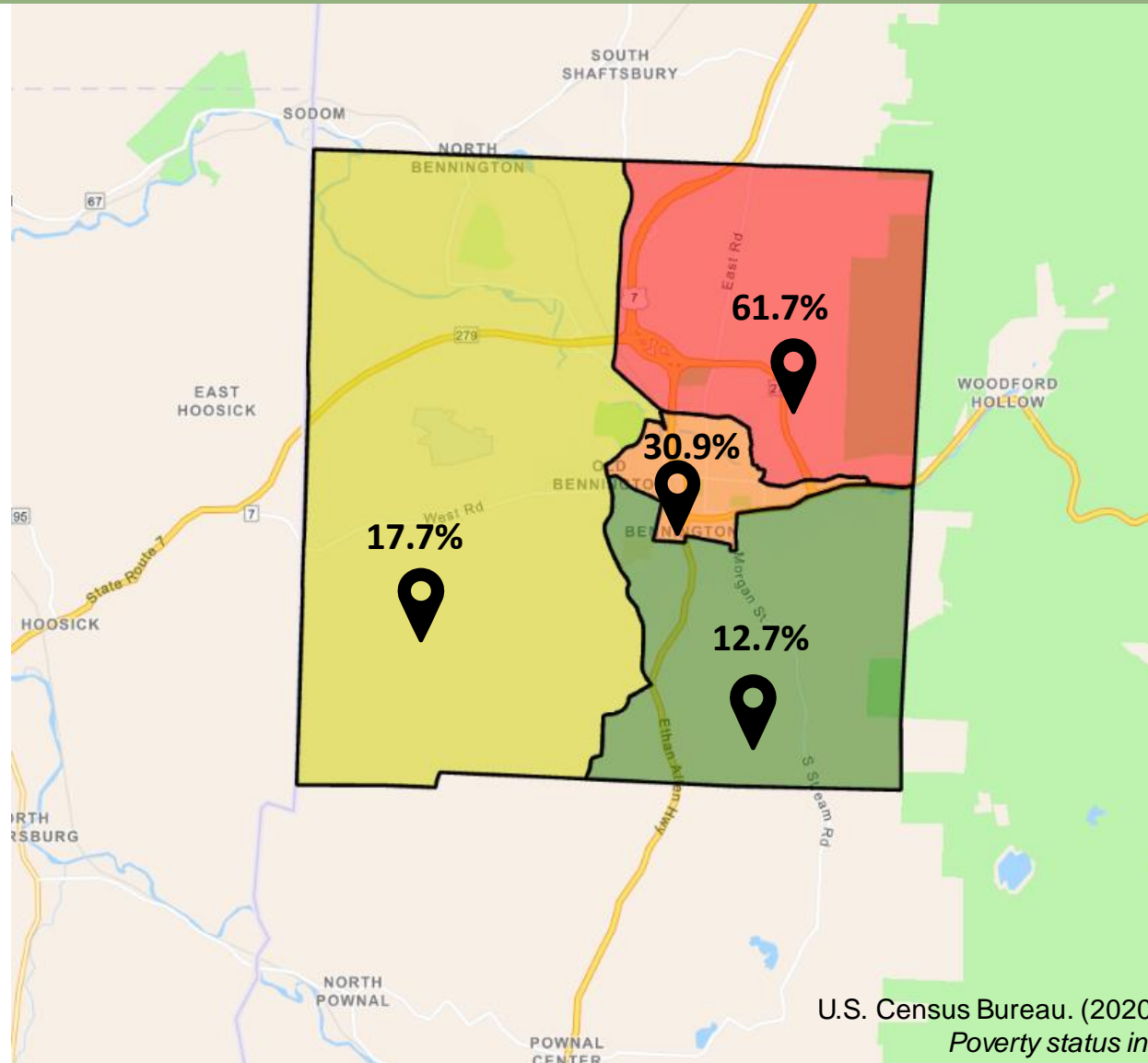
U.S. Census Bureau. (2020). *American Community Survey 5-Year Estimates. Income in the past 12 months (in 2020 inflation-adjusted dollars)*

Percentage of Individuals Under Federal Poverty Level



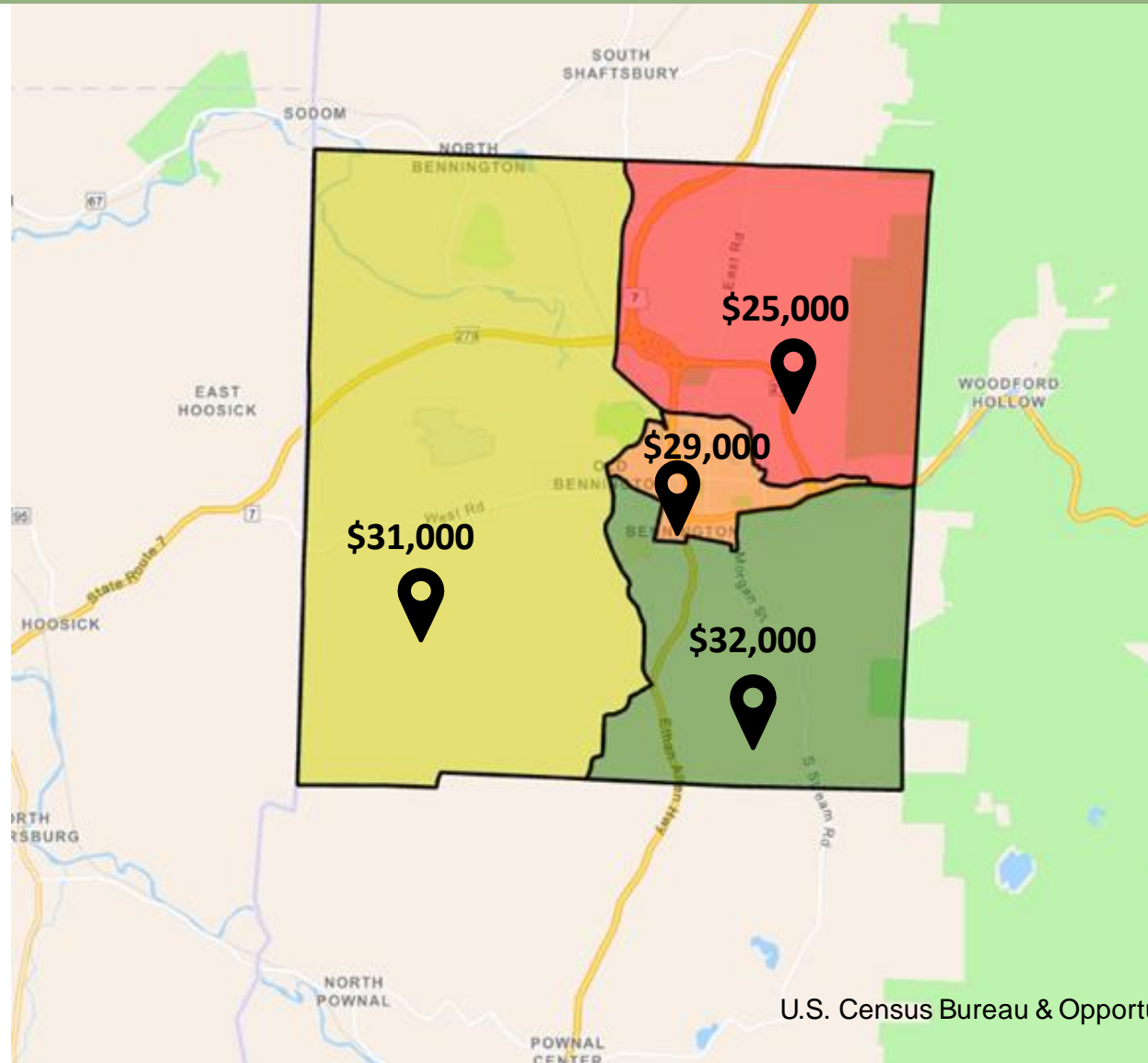
U.S. Census Bureau. (2020). *American Community Survey 5-Year Estimates.*
Poverty status in the past 12 months

Percentage of Children Under Federal Poverty Level



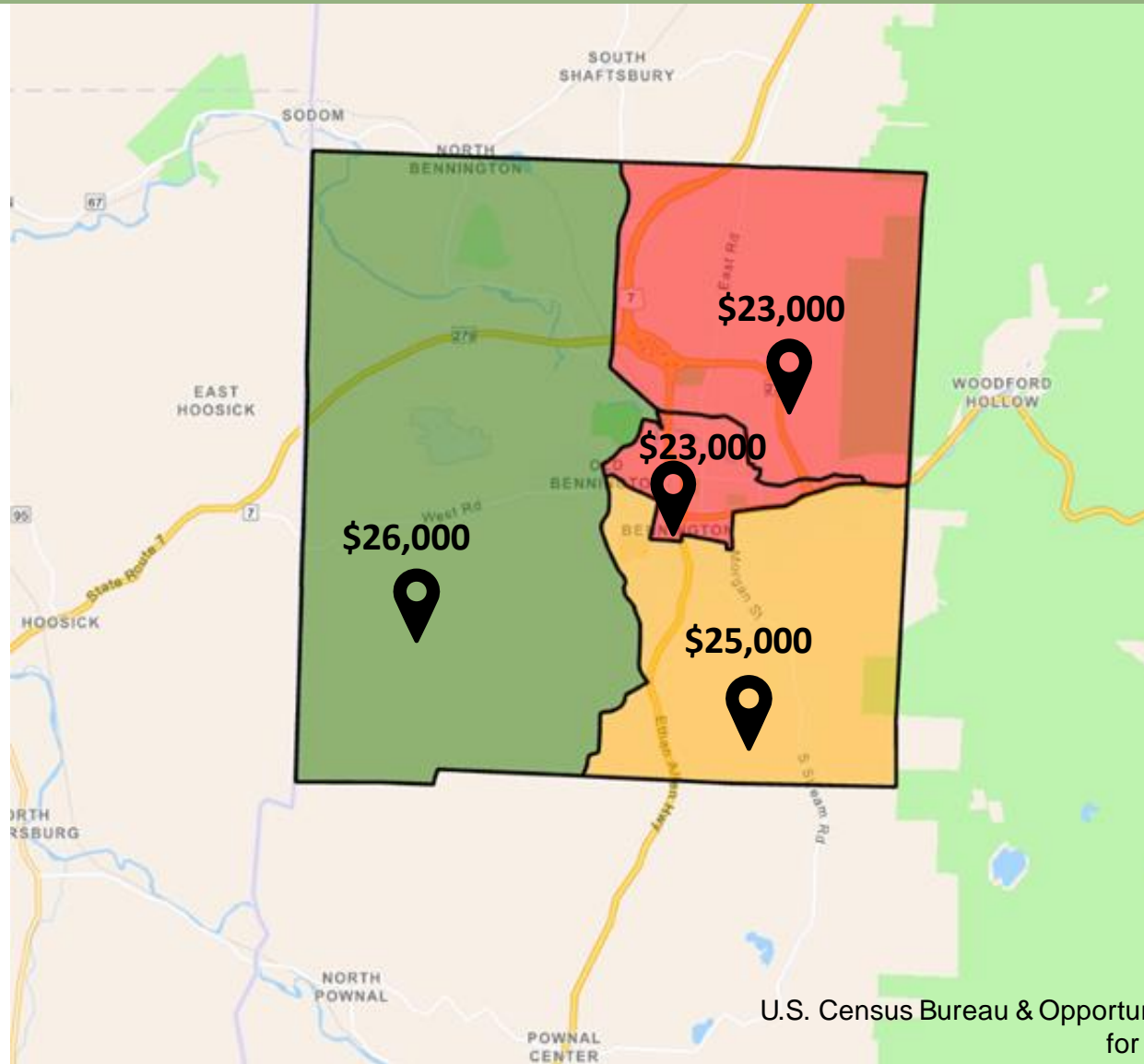
U.S. Census Bureau. (2020). *American Community Survey 5-Year Estimates*.
Poverty status in the past 12 months for individuals under 18 years

Individual Income at Age 35



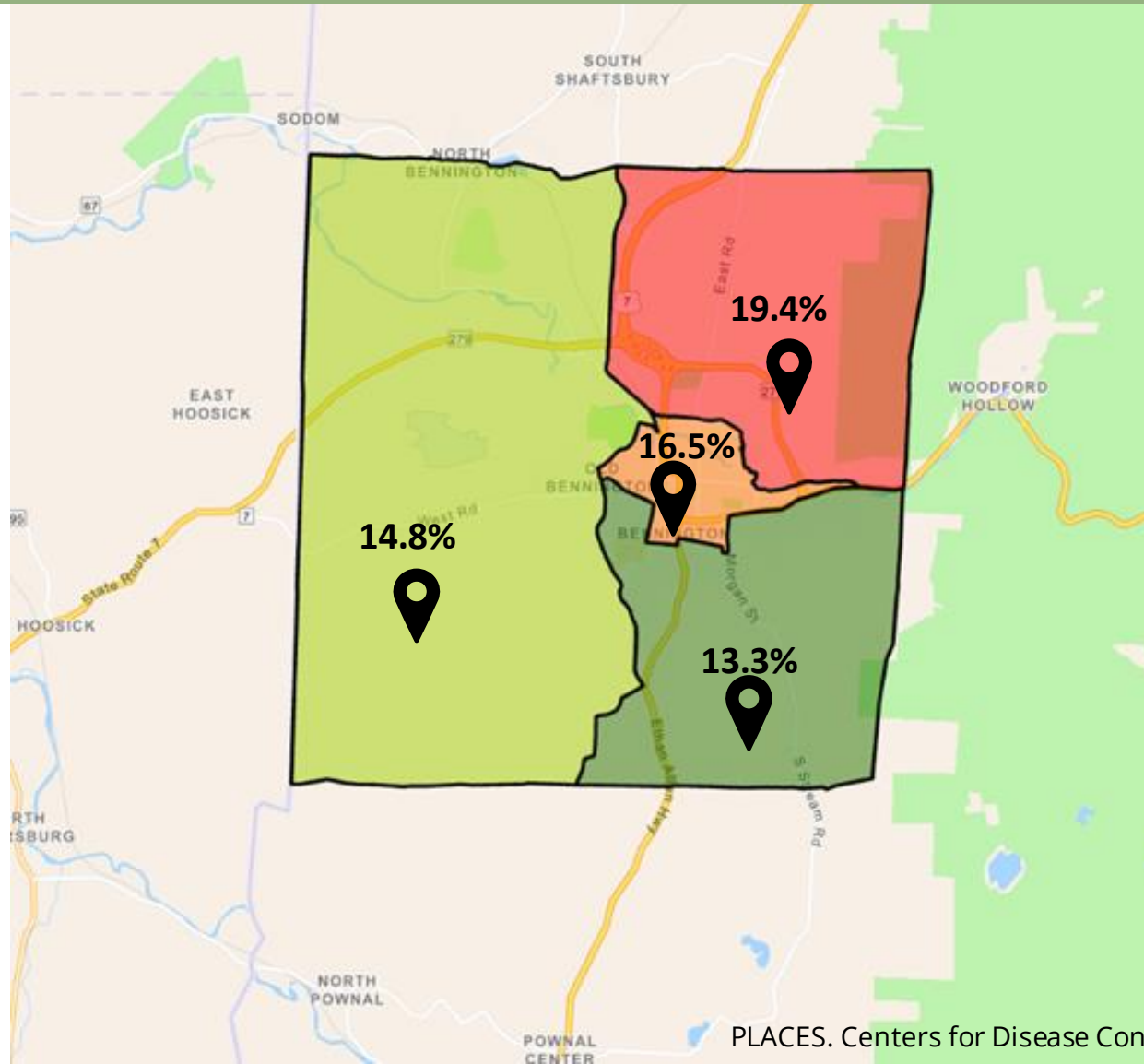
U.S. Census Bureau & Opportunity Insights. Opportunity Atlas: Individual income (excluding spouse) at age 35

Household Income at Age 35 if Remaining in Home Tract



U.S. Census Bureau & Opportunity Insights. Opportunity Atlas: Household income for children who stayed in the same commuting zone.

Percentage of Adults Feeling Frequent Mental Distress

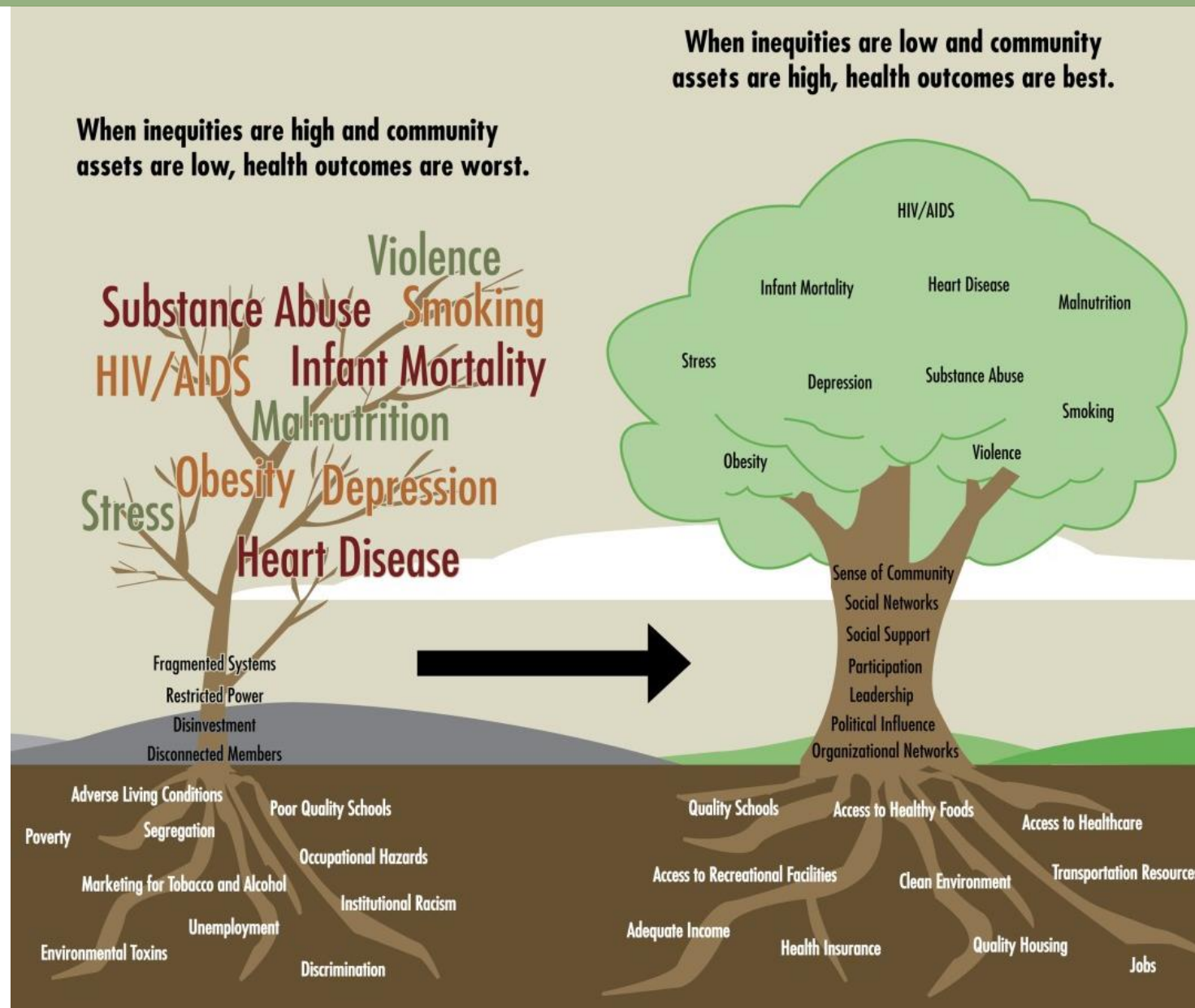




Data about health inequities don't show our end goals, but show progress toward a society where systematic, unjust differences in the health status of different population groups do not exist.



What Causes Differences in Health Outcomes?



It's time to take a proactive, intersectional, and structural approach to thinking about health.



Housing and Multigenerational Community-Building



Affordable and Accessible Recreation Opportunities



Environment Modifications to Support Healthy Behavior



Promotion and Expansion of Substance-Free Spaces



Vermont Community Health Equity Partnership Grant: Focusing on Economic Dignity

Promoting dignity as a cornerstone of economic, labor, policy, and social service reforms will reduce preventable and unjust inequities in health while creating opportunities for economic empowerment and a meaningful and fulfilling life for all.

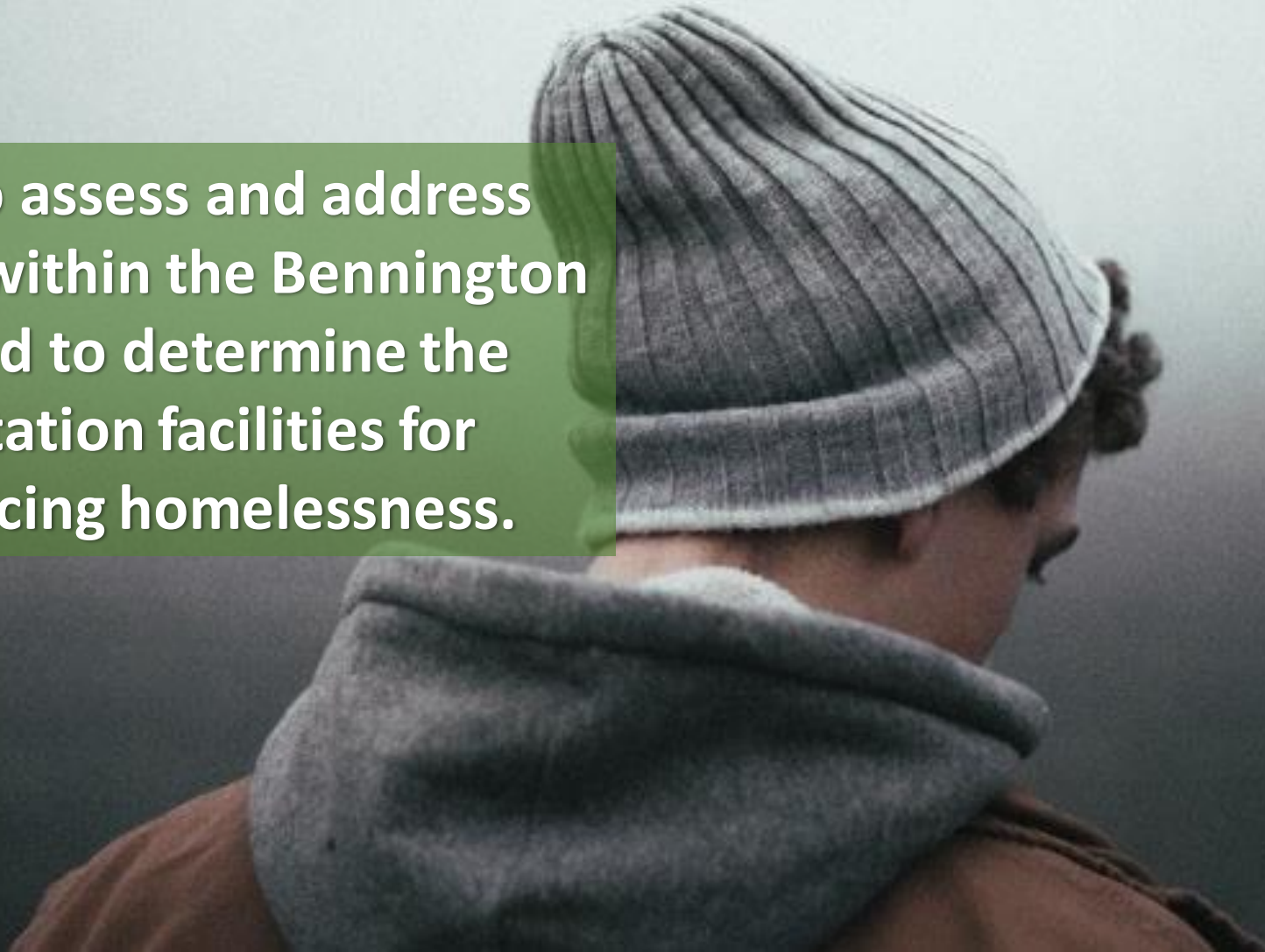


Addressing Elevated Blood Lead Levels in Bennington Children

We can work together to ensure that all Bennington children are protected from lead exposure, and that any exposures are addressed promptly.

Homeless Health Equity Grant: Assessing Unsheltered Youth & Public Sanitation

Community effort to assess and address precarious housing within the Bennington youth population and to determine the need for public sanitation facilities for individuals experiencing homelessness.



When appropriate, leverage health data to support decision-making and priority setting



When appropriate, leverage health data to support decision-making and priority setting

Continue to participate in community groups when possible, and receive regular updates





When appropriate, leverage health data to support decision-making and priority setting

Continue to participate in community groups when possible, and receive regular updates

Reach out for information if interested in the potential beneficial and/or detrimental health impact of decisions

When appropriate, leverage health data to support decision-making and priority setting

Continue to participate in community groups when possible, and receive regular updates

Reach out for information if interested in the potential beneficial and/or detrimental health impact of decisions

Consider current VDH projects for collaborative efforts

We are eager to partner with the Town of Bennington to increase the potential for sustained impacted and success in improving health conditions.



When combined with the lived expertise of local residents, data and public health principles can lead to innovation and improved lives for our friends, neighbors, and families.



rory.price@vermont.gov
802-447-3531



Thank you!