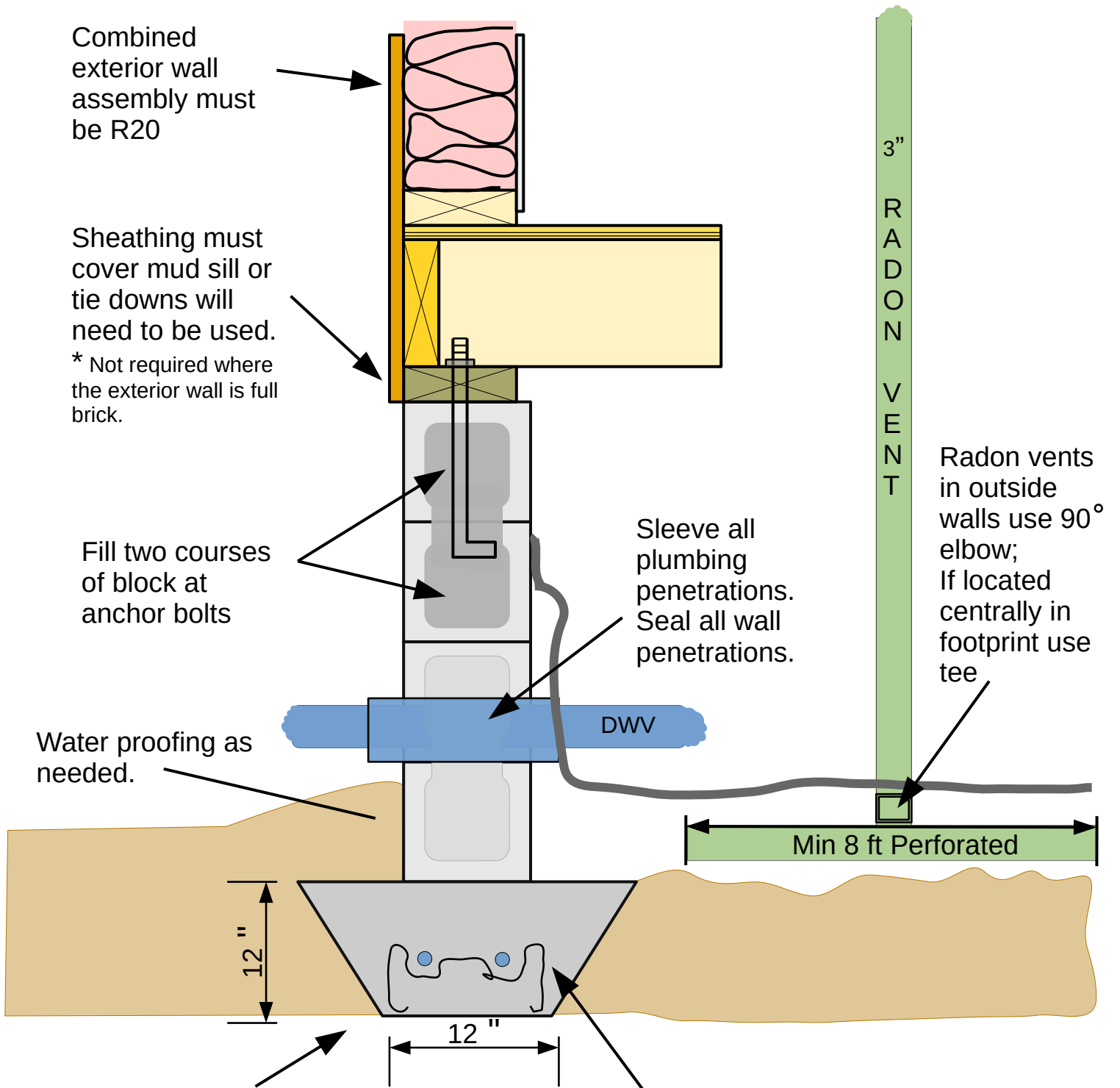


# Typical Crawl Space Foundation Wall Assembly



Combined exterior wall assembly must be R20

Sheathing must cover mud sill or tie downs will need to be used.  
\* Not required where the exterior wall is full brick.

Fill two courses of block at anchor bolts

Water proofing as needed.

Sleeve all plumbing penetrations. Seal all wall penetrations.

3" RADON VENT

Radon vents in outside walls use 90° elbow; If located centrally in footprint use tee

DWV

Min 8 ft Perforated

12"

12"

Bottom of footing must be 12" below grade

- Minimum 2 runs of #4 rebar in bottom 1/3 of footing
- Continuous in all corners and laps minimum of 20"
- Maximum spacing of chairs: 5ft.