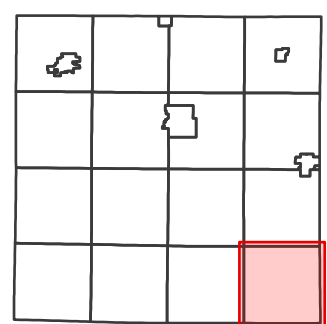
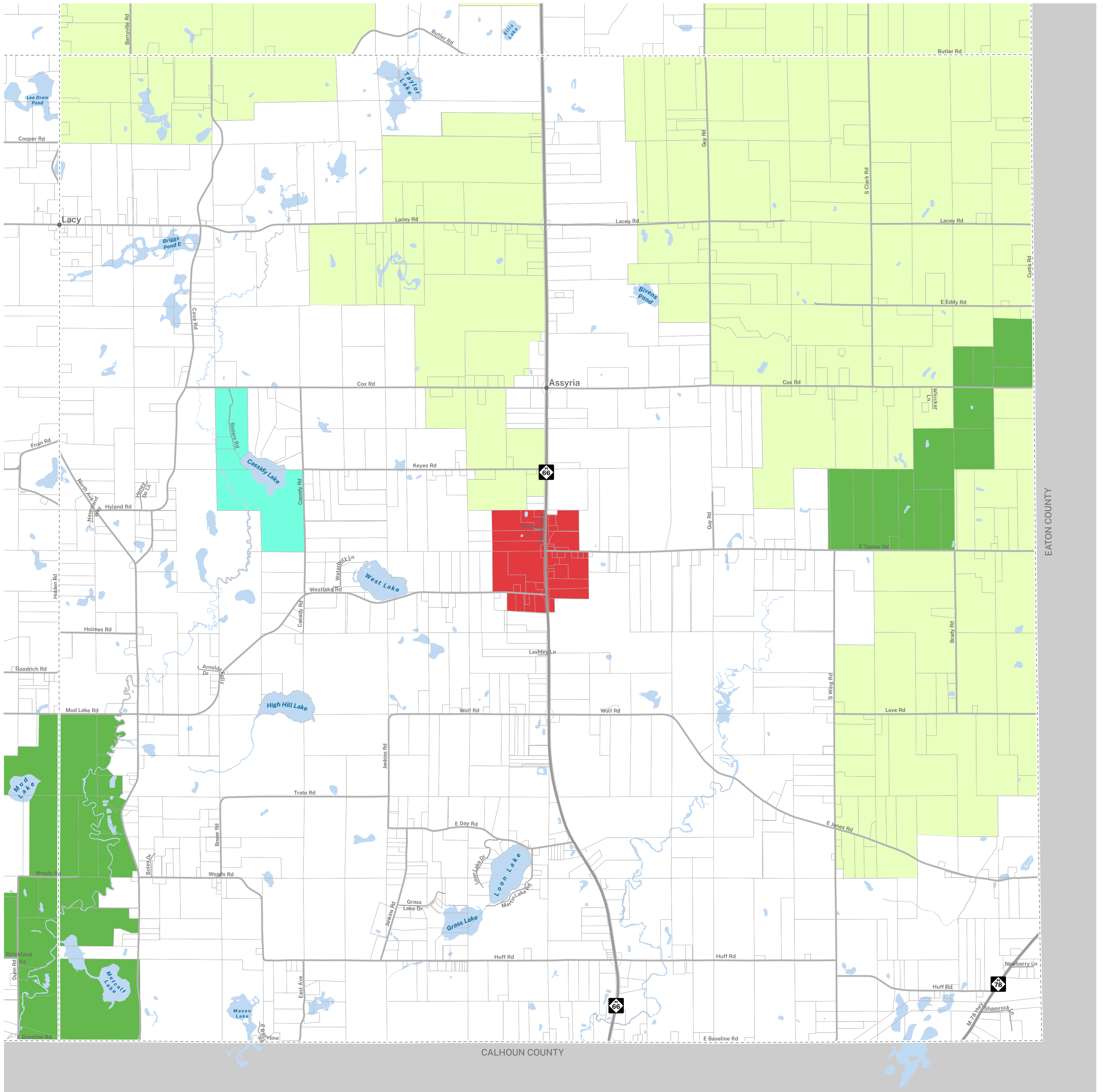


Assyria Township

BARRY COUNTY, MICHIGAN

Zoning



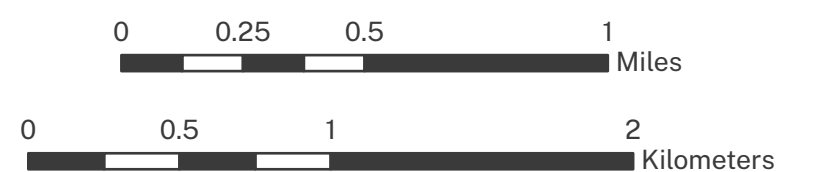
7/6/2023

- Railroads
- AGRICULTURAL
- CONSERVATION RESERVE
- GENERAL COMMERCIAL
- GENERAL INDUSTRIAL
- HIGH DENSITY RESIDENTIAL
- LOW DENSITY RESIDENTIAL
- LIGHT INDUSTRIAL
- MODERATE DENSITY RESIDENTIAL
- MIXED USE
- NATURAL LAKES & RIVER
- RECREATIONAL LAKES
- RURAL RESIDENTIAL

- Local Units
- Tax Parcels
- Lakes & Ponds



Scale: 1:25,000

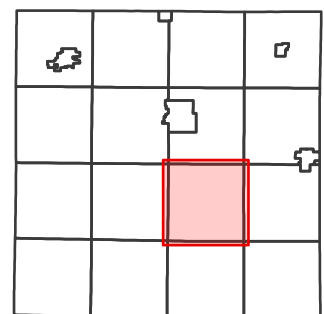
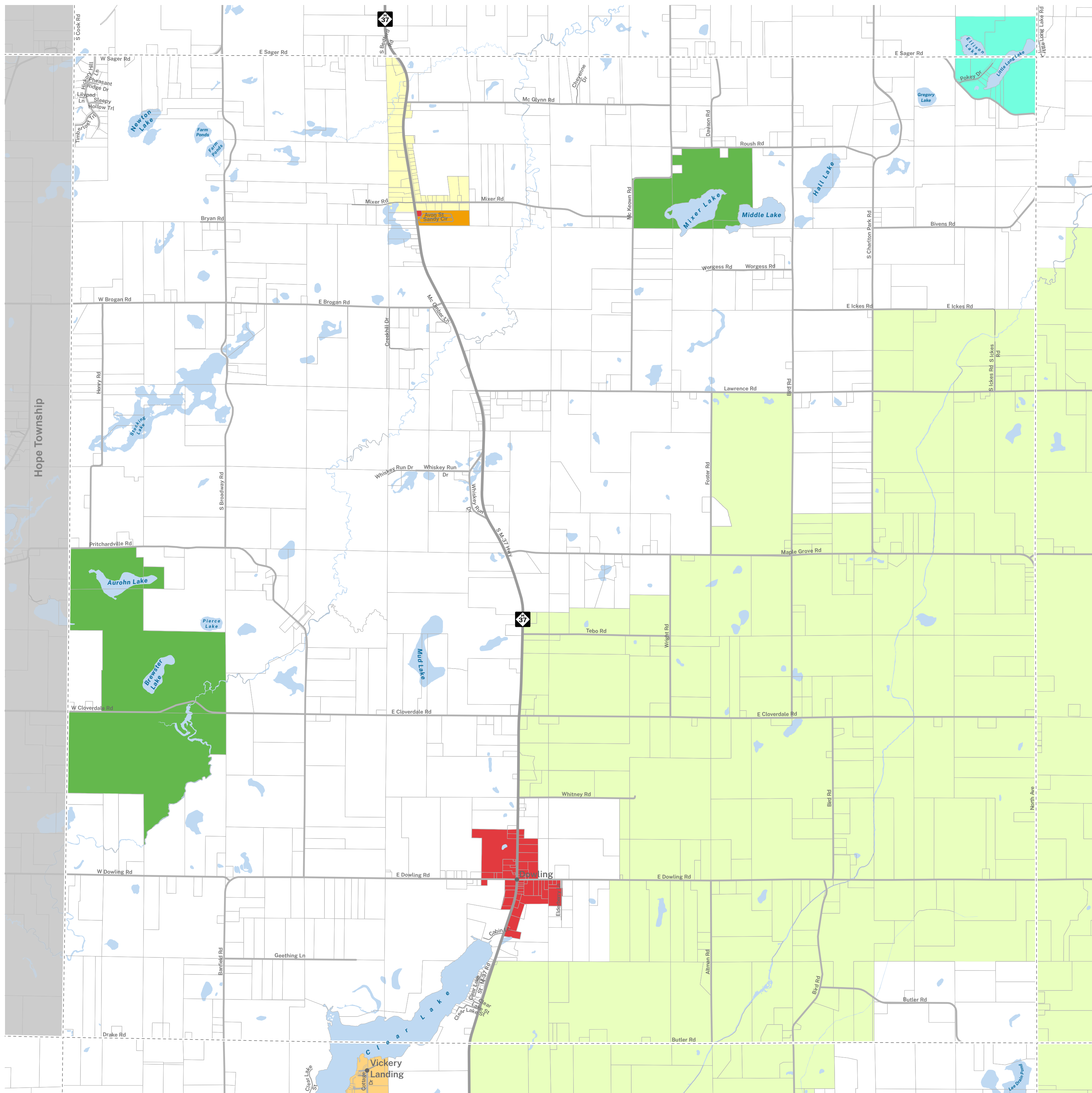


Zoning is subject to change. Please consult the Barry County Planning & Zoning Department for additional information. This zoning map is representative of the last data made available to Barry County Land Information Services.

Baltimore Township

BARRY COUNTY, MICHIGAN

Zoning



7/6/2023

- Railroads
- AGRICULTURAL
- CONSERVATION RESERVE
- GENERAL COMMERCIAL
- GENERAL INDUSTRIAL
- HIGH DENSITY RESIDENTIAL
- LOW DENSITY RESIDENTIAL
- LIGHT INDUSTRIAL
- MODERATE DENSITY RESIDENTIAL
- MIXED USE
- NATURAL LAKES & RIVER
- RECREATIONAL LAKES
- RURAL RESIDENTIAL

- Local Units
- Tax Parcels
- Lakes & Ponds



Scale: 1:25,000



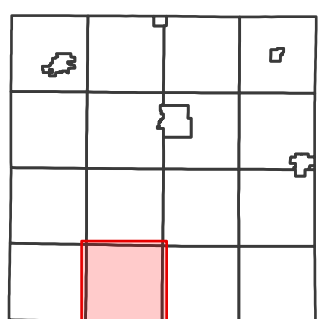
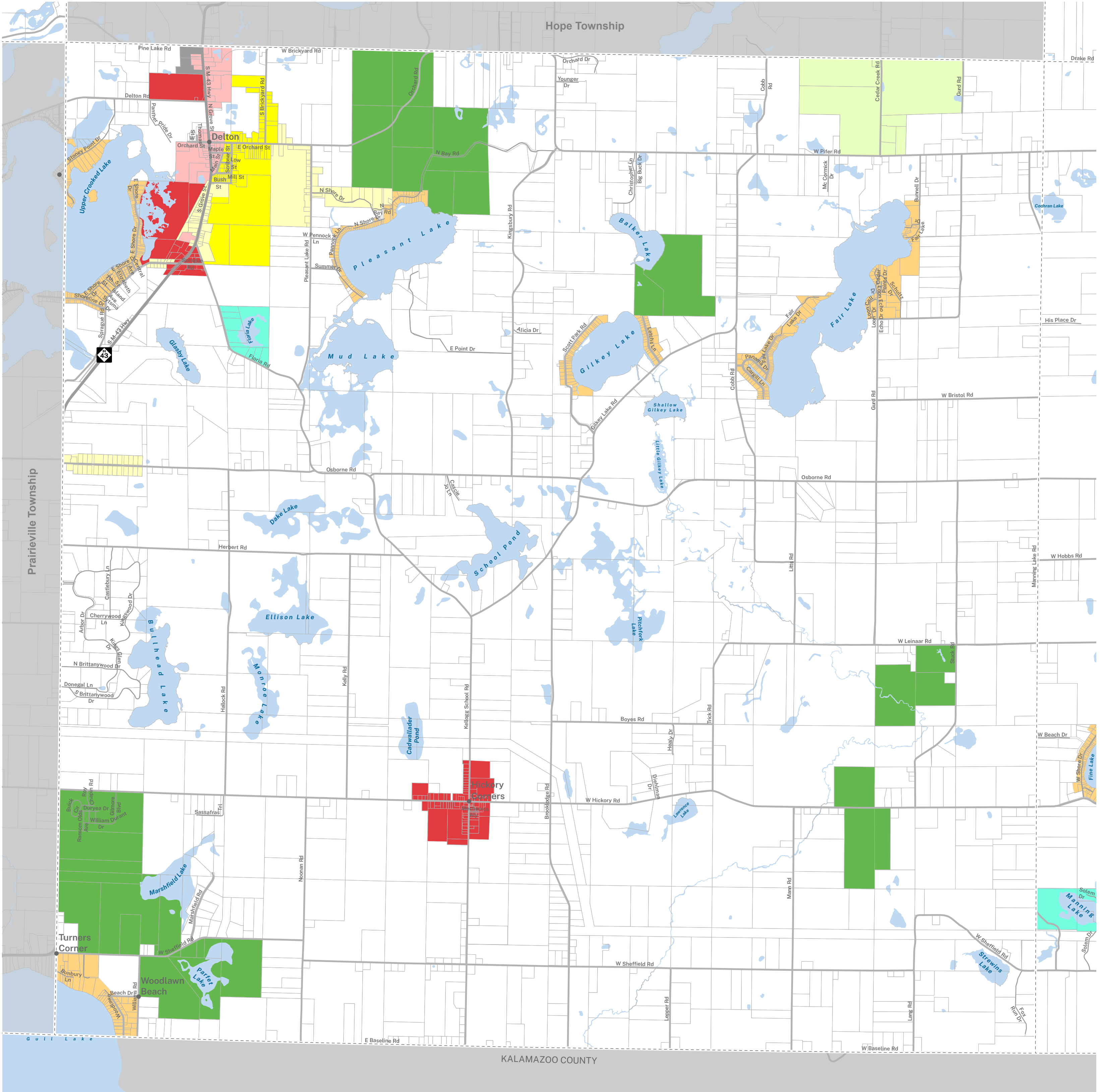
Zoning is subject to change. Please consult the Barry County Planning & Zoning Department for additional information. This zoning map is representative of the last data made available to Barry County Land Information Services.

This map is neither a legally recorded map nor a survey and is not intended to be used as such. The information on Barry County maps is distributed and transmitted 'as is' without warranties of any kind, either expressed or implied, including without limitations, warranties of title or implied warranties of merchantability or fitness for a particular purpose. Barry County does not guarantee the accuracy, timeliness, or completeness of the information on this map.

Barry Township

BARRY COUNTY, MICHIGAN

Zoning



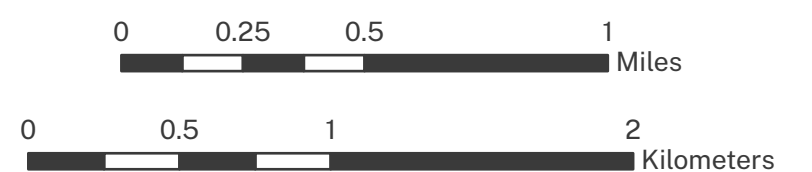
7/6/2023

- Railroads
- AGRICULTURAL
- CONSERVATION RESERVE
- GENERAL COMMERCIAL
- GENERAL INDUSTRIAL
- HIGH DENSITY RESIDENTIAL
- LOW DENSITY RESIDENTIAL
- LIGHT INDUSTRIAL
- MODERATE DENSITY RESIDENTIAL
- MIXED USE
- NATURAL LAKES & RIVER
- RECREATIONAL LAKES
- RURAL RESIDENTIAL

- Local Units
- Tax Parcels
- Lakes & Ponds



Scale: 1:25,000



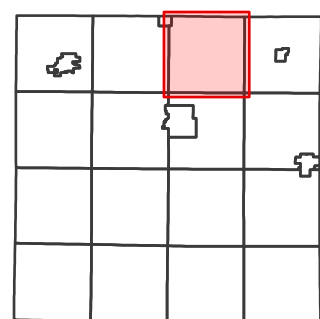
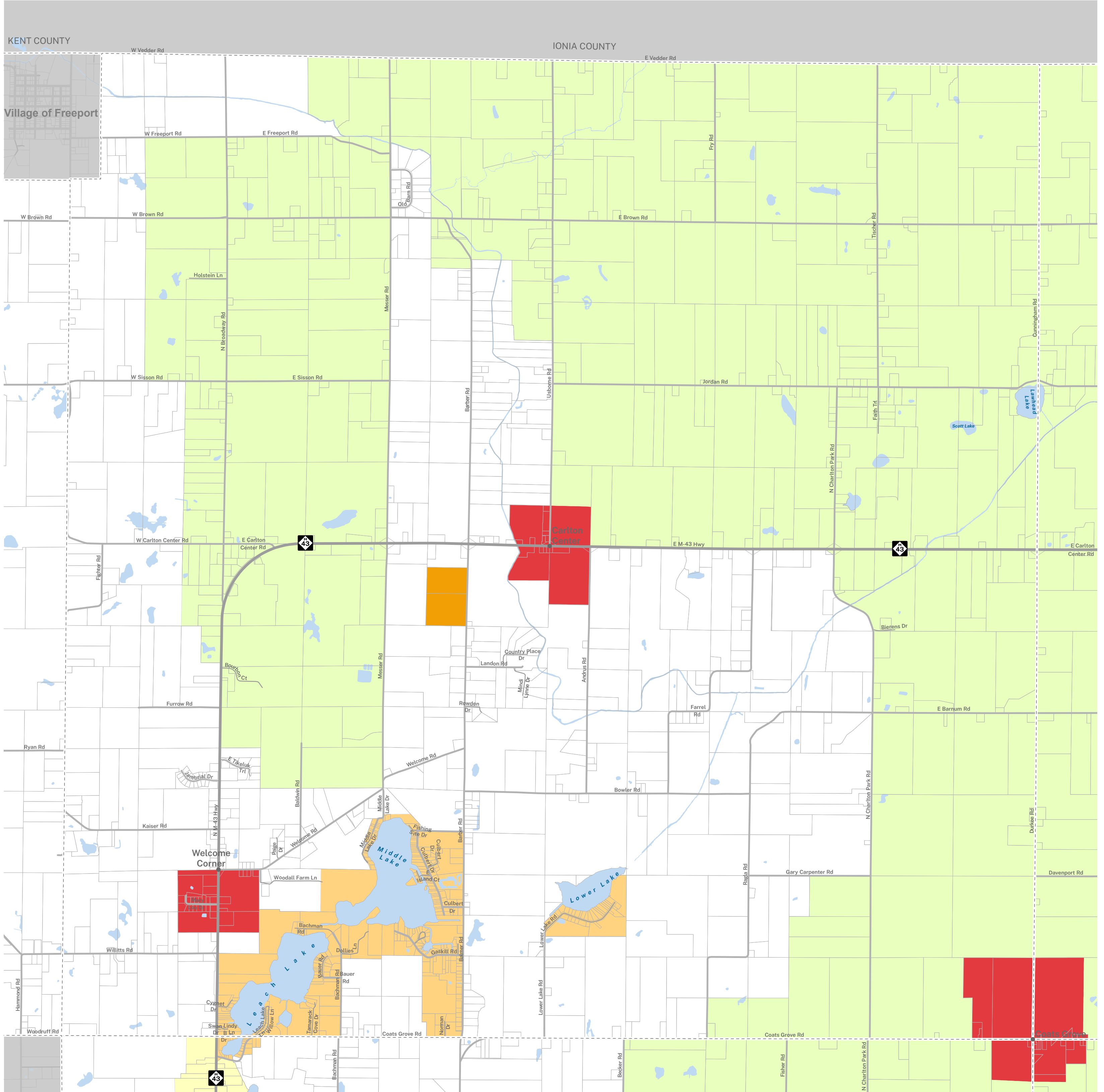
Zoning is subject to change. Please consult the Barry County Planning & Zoning Department for additional information. This zoning map is representative of the last data made available to Barry County Land Information Services.

This map is neither a legally recorded map nor a survey and is not intended to be used as such. The information on Barry County maps is distributed and transmitted 'as is' without warranties of any kind, either expressed or implied, including without limitations, warranties of title or implied warranties of merchantability or fitness for a particular purpose. Barry County does not guarantee the accuracy, timeliness, or completeness of the information on this map.

Carlton Township

BARRY COUNTY, MICHIGAN

Zoning



7/6/2023

- Railroads
- AGRICULTURAL
- CONSERVATION RESERVE
- GENERAL COMMERCIAL
- GENERAL INDUSTRIAL
- HIGH DENSITY RESIDENTIAL
- LOW DENSITY RESIDENTIAL
- LIGHT INDUSTRIAL
- MODERATE DENSITY RESIDENTIAL
- MIXED USE
- NATURAL LAKES & RIVER
- RECREATIONAL LAKES
- RURAL RESIDENTIAL

- Local Units
- Tax Parcels
- Lakes & Ponds



Scale: 1:25,000



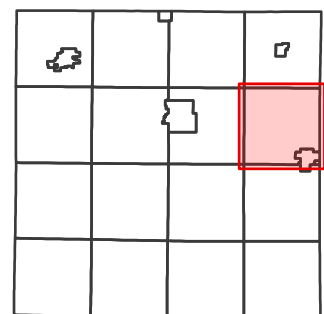
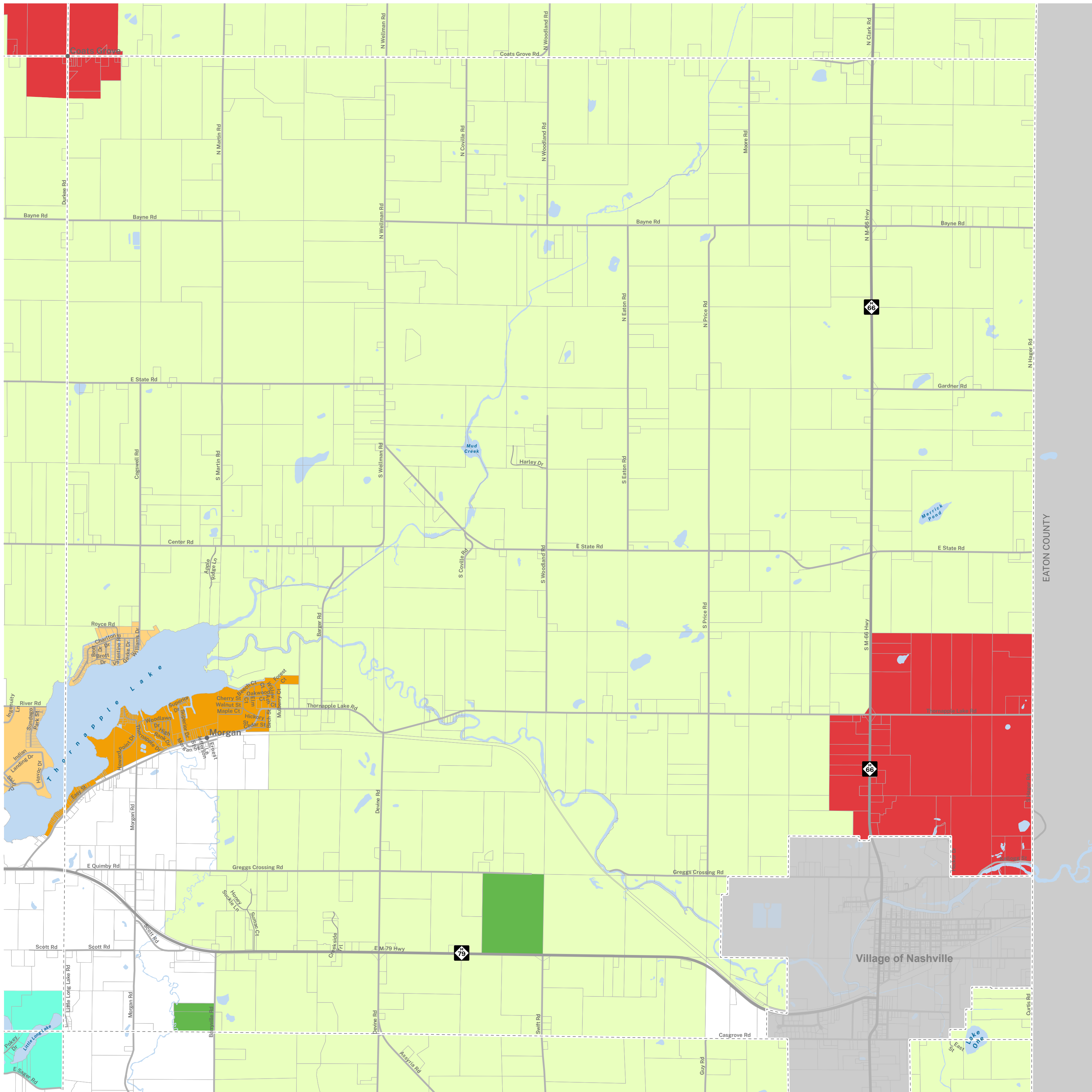
Zoning is subject to change. Please consult the Barry County Planning & Zoning Department for additional information. This zoning map is representative of the last data made available to Barry County Land Information Services.

This map is neither a legally recorded map nor a survey and is not intended to be used as such. The information on Barry County maps is distributed and transmitted 'as is' without warranties of any kind, either expressed or implied, including without limitations, warranties of title or implied warranties of merchantability or fitness for a particular purpose. Barry County does not guarantee the accuracy, timeliness, or completeness of the information on this map.

Castleton Township

BARRY COUNTY, MICHIGAN

Zoning



7/6/2023

- Railroads
- AGRICULTURAL
- CONSERVATION RESERVE
- GENERAL COMMERCIAL
- GENERAL INDUSTRIAL
- HIGH DENSITY RESIDENTIAL
- LOW DENSITY RESIDENTIAL
- LIGHT INDUSTRIAL
- MODERATE DENSITY RESIDENTIAL
- MIXED USE
- NATURAL LAKES & RIVER
- RECREATIONAL LAKES
- RURAL RESIDENTIAL

- Local Units
- Tax Parcels
- Lakes & Ponds



Scale: 1:25,000

0 0.25 0.5 1 Miles

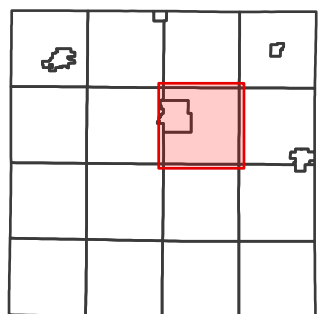
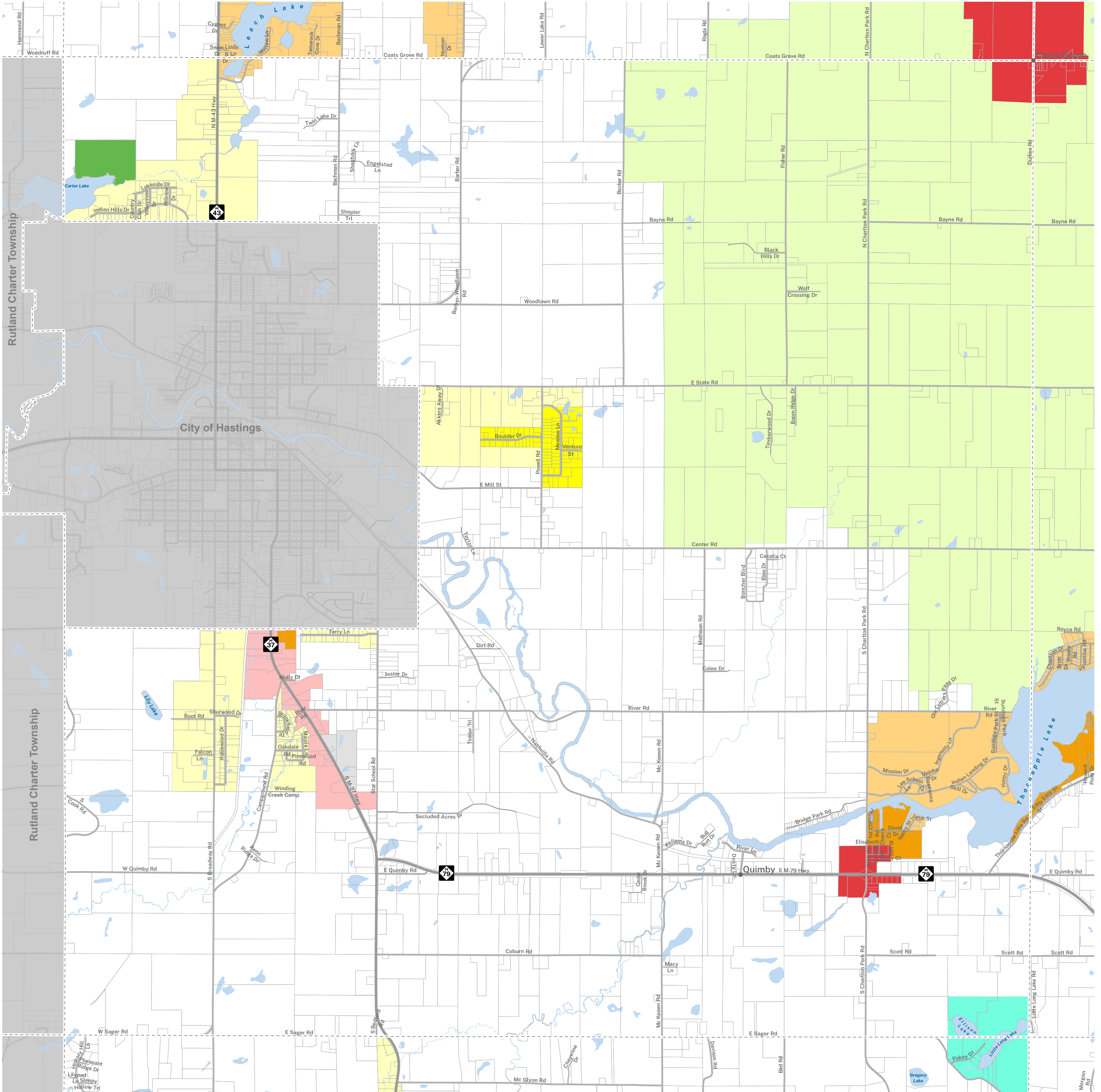
0 0.5 1 2 Kilometers

Zoning is subject to change. Please consult the Barry County Planning & Zoning Department for additional information. This zoning map is representative of the last data made available to Barry County Land Information Services.

Hastings Charter Township

BARRY COUNTY, MICHIGAN

Zoning



7/6/2023

- Railroads
- AGRICULTURAL
- CONSERVATION RESERVE
- GENERAL COMMERCIAL
- GENERAL INDUSTRIAL
- HIGH DENSITY RESIDENTIAL
- LOW DENSITY RESIDENTIAL
- LIGHT INDUSTRIAL
- MODERATE DENSITY RESIDENTIAL
- MIXED USE
- NATURAL LAKES & RIVER
- RECREATIONAL LAKES
- RURAL RESIDENTIAL

- Local Units
- Tax Parcels
- Lakes & Ponds



Scale: 1:25,000

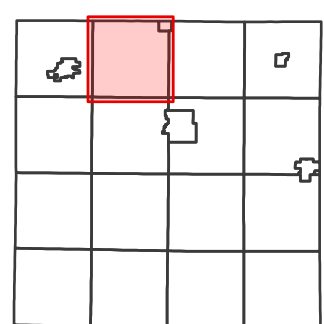
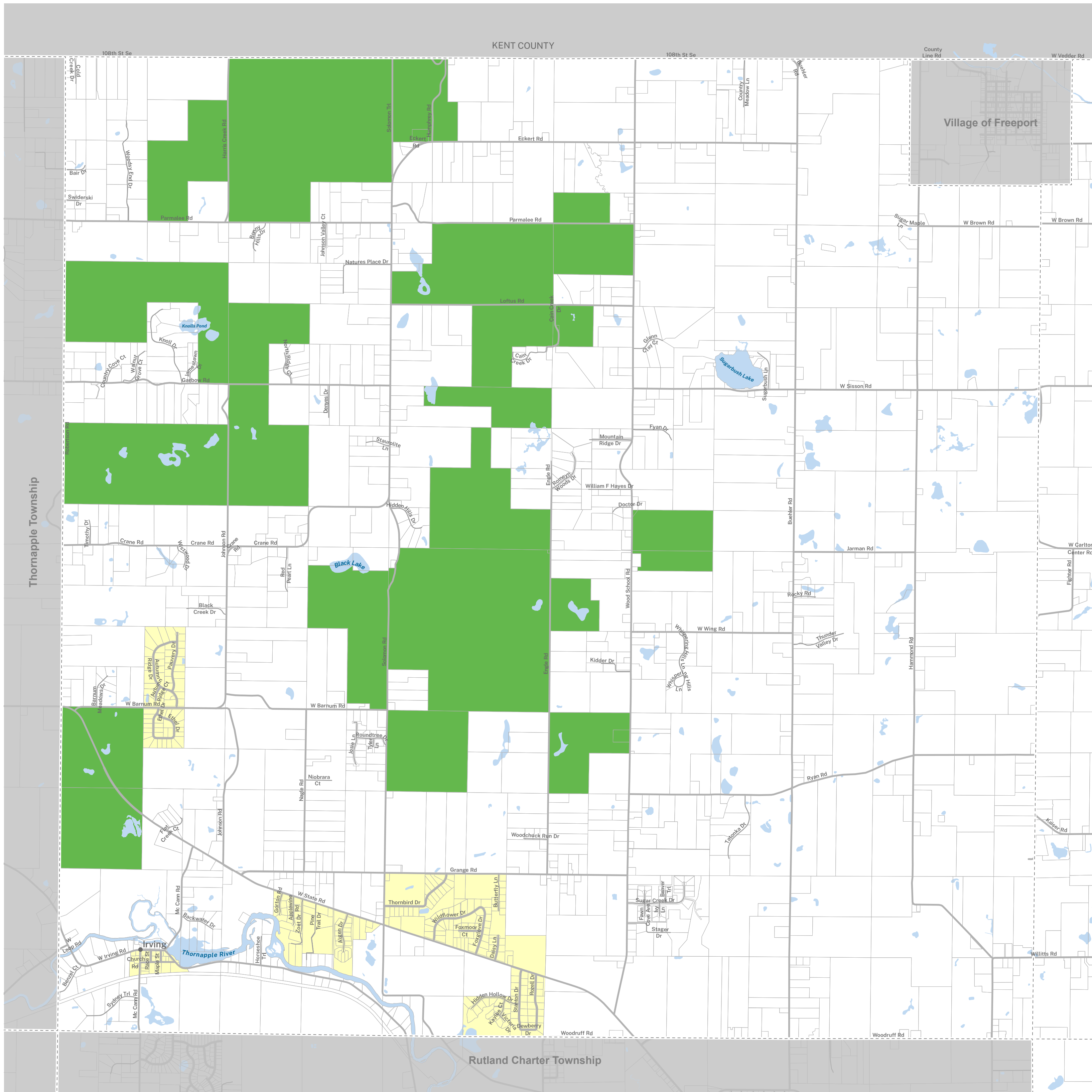


Zoning is subject to change. Please consult the Barry County Planning & Zoning Department for additional information. This zoning map is representative of the last data made available to Barry County Land Information Services.

Irving Township

BARRY COUNTY, MICHIGAN

Zoning



7/6/2023

- | | |
|--------------------------|------------------------------|
| Railroads | LIGHT INDUSTRIAL |
| AGRICULTURAL | MODERATE DENSITY RESIDENTIAL |
| CONSERVATION RESERVE | MIXED USE |
| GENERAL COMMERCIAL | NATURAL LAKES & RIVER |
| GENERAL INDUSTRIAL | RECREATIONAL LAKES |
| HIGH DENSITY RESIDENTIAL | RURAL RESIDENTIAL |
| LOW DENSITY RESIDENTIAL | |

- Local Units
- Tax Parcels
- Lakes & Ponds



Scale: 1:25,000



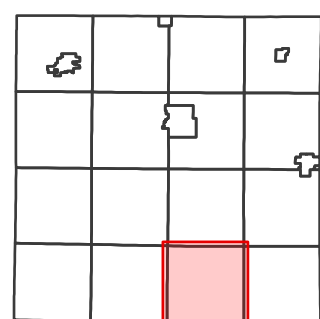
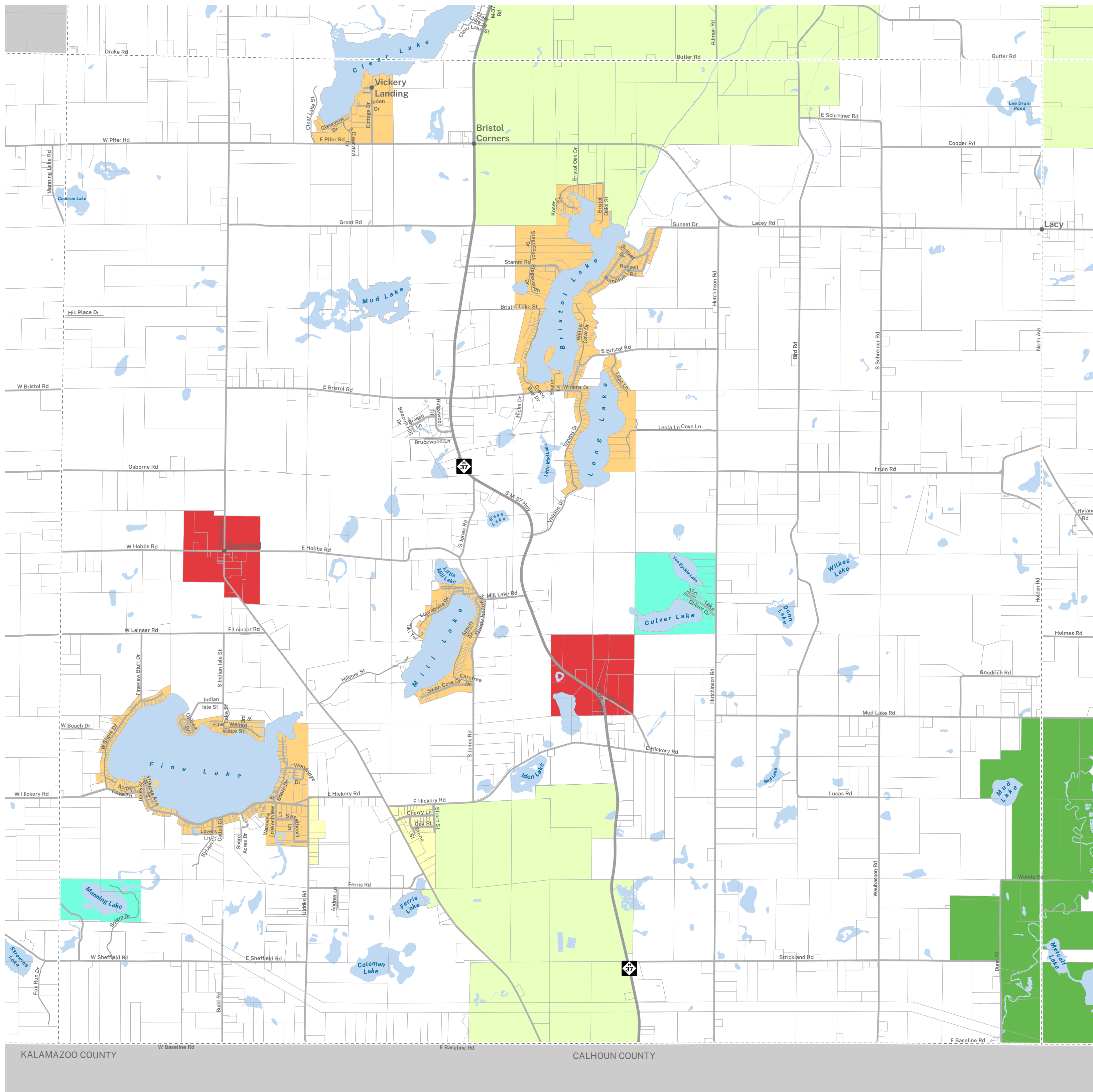
Zoning is subject to change. Please consult the Barry County Planning & Zoning Department for additional information. This zoning map is representative of the last data made available to Barry County Land Information Services.

This map is neither a legally recorded map nor a survey and is not intended to be used as such. The information on Barry County maps is distributed and transmitted 'as is' without warranties of any kind, either expressed or implied, including without limitations, warranties of title or implied warranties of merchantability or fitness for a particular purpose. Barry County does not guarantee the accuracy, timeliness, or completeness of the information on this map.

Johnstown Township

BARRY COUNTY, MICHIGAN

Zoning



7/6/2023

Zoning is subject to change. Please consult the Barry County Planning & Zoning Department for additional information. This zoning map is representative of the last data made available to Barry County Land Information Services.



- Railroads
- AGRICULTURAL
- CONSERVATION RESERVE
- GENERAL COMMERCIAL
- GENERAL INDUSTRIAL
- HIGH DENSITY RESIDENTIAL
- LOW DENSITY RESIDENTIAL
- LIGHT INDUSTRIAL
- MODERATE DENSITY RESIDENTIAL
- MIXED USE
- NATURAL LAKES & RIVER
- RECREATIONAL LAKES
- RURAL RESIDENTIAL

- Local Units
- Tax Parcels
- Lakes & Ponds



Scale: 1:25,000

0 0.25 0.5 1 Miles

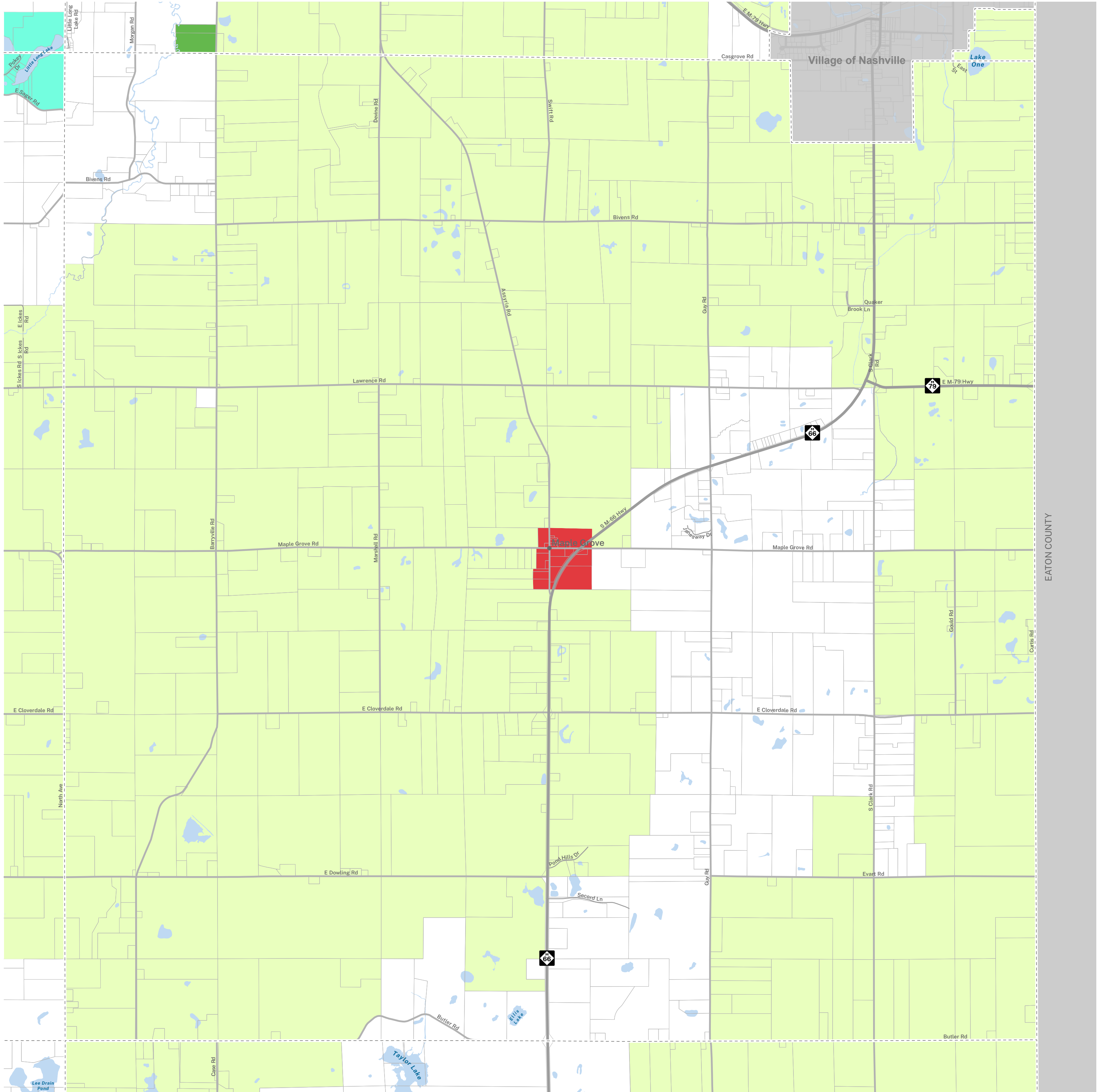
0 0.5 1 2 Kilometers

This map is neither a legally recorded map nor a survey and is not intended to be used as such. The information on Barry County maps is distributed and transmitted 'as is' without warranties of any kind, either expressed or implied, including without limitations, warranties of title or implied warranties of merchantability or fitness for a particular purpose. Barry County does not guarantee the accuracy, timeliness, or completeness of the information on this map.

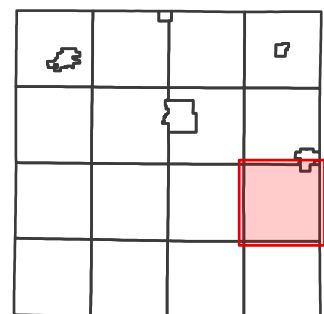
Maple Grove Township

BARRY COUNTY, MICHIGAN

Zoning



EATON COUNTY



7/6/2023

- Railroads
- AGRICULTURAL
- CONSERVATION RESERVE
- GENERAL COMMERCIAL
- GENERAL INDUSTRIAL
- HIGH DENSITY RESIDENTIAL
- LOW DENSITY RESIDENTIAL
- LIGHT INDUSTRIAL
- MODERATE DENSITY RESIDENTIAL
- MIXED USE
- NATURAL LAKES & RIVER
- RECREATIONAL LAKES
- RURAL RESIDENTIAL

- Local Units
- Tax Parcels
- Lakes & Ponds



Scale: 1:25,000



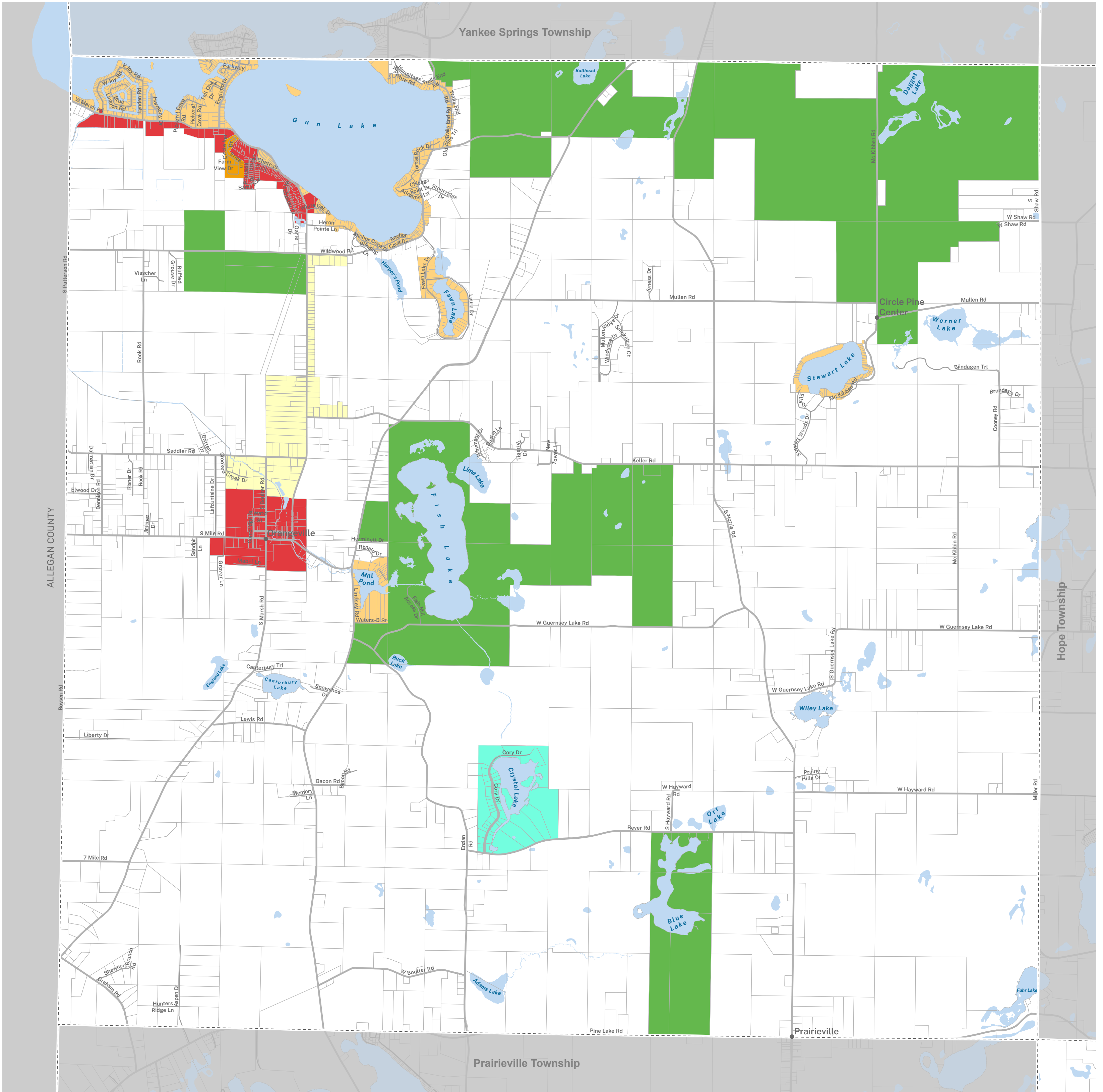
Zoning is subject to change. Please consult the Barry County Planning & Zoning Department for additional information. This zoning map is representative of the last data made available to Barry County Land Information Services.

This map is neither a legally recorded map nor a survey and is not intended to be used as such. The information on Barry County maps is distributed and transmitted 'as is' without warranties of any kind, either expressed or implied, including without limitations, warranties of title or implied warranties of merchantability or fitness for a particular purpose. Barry County does not guarantee the accuracy, timeliness, or completeness of the information on this map.

Orangeville Township

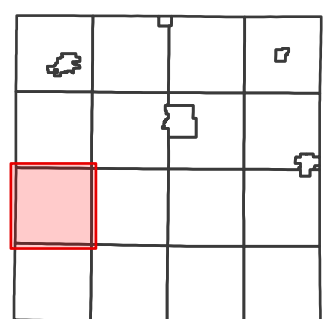
BARRY COUNTY, MICHIGAN

Zoning



ALLEGAN COUNTY

Hope Township



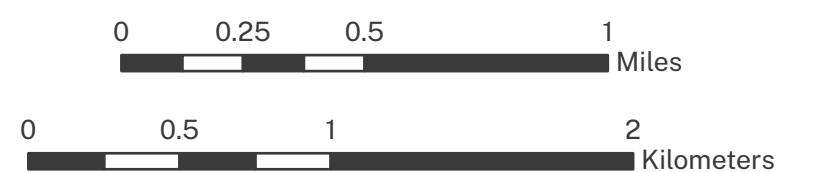
7/6/2023

- Railroads
- AGRICULTURAL
- CONSERVATION RESERVE
- GENERAL COMMERCIAL
- GENERAL INDUSTRIAL
- HIGH DENSITY RESIDENTIAL
- LOW DENSITY RESIDENTIAL
- LIGHT INDUSTRIAL
- MODERATE DENSITY RESIDENTIAL
- MIXED USE
- NATURAL LAKES & RIVER
- RECREATIONAL LAKES
- RURAL RESIDENTIAL

- Local Units
- Tax Parcels
- Lakes & Ponds



Scale: 1:25,000

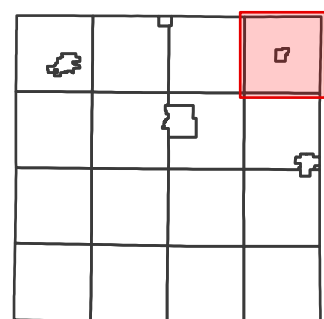
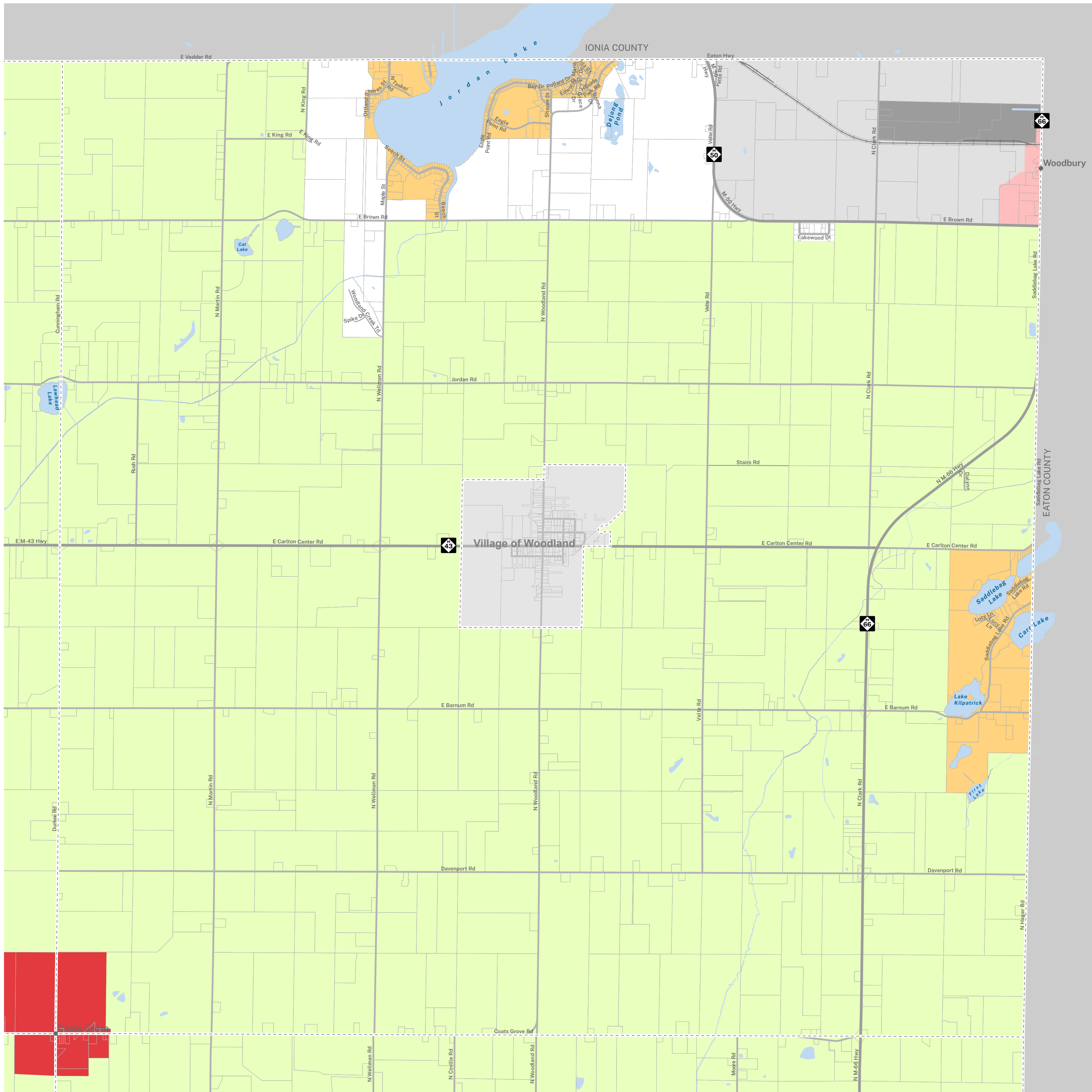


Zoning is subject to change. Please consult the Barry County Planning & Zoning Department for additional information. This zoning map is representative of the last data made available to Barry County Land Information Services.

Woodland Township

BARRY COUNTY, MICHIGAN

Zoning



7/6/2023

- Railroads
- AGRICULTURAL
- CONSERVATION RESERVE
- GENERAL COMMERCIAL
- GENERAL INDUSTRIAL
- HIGH DENSITY RESIDENTIAL
- LOW DENSITY RESIDENTIAL
- LIGHT INDUSTRIAL
- MODERATE DENSITY RESIDENTIAL
- MIXED USE
- NATURAL LAKES & RIVER
- RECREATIONAL LAKES
- RURAL RESIDENTIAL

- Local Units
- Tax Parcels
- Lakes & Ponds



Scale: 1:25,000

0 0.25 0.5 1 Miles

0 0.5 1 2 Kilometers

Zoning is subject to change. Please consult the Barry County Planning & Zoning Department for additional information. This zoning map is representative of the last data made available to Barry County Land Information Services.

This map is neither a legally recorded map nor a survey and is not intended to be used as such. The information on Barry County maps is distributed and transmitted 'as is' without warranties of any kind, either expressed or implied, including without limitations, warranties of title or implied warranties of merchantability or fitness for a particular purpose. Barry County does not guarantee the accuracy, timeliness, or completeness of the information on this map.