



**Public Health**  
Prevent. Promote. Protect.  
**Butler County  
Health Department**

The Butler County  
Partnership to Reduce  
**infant  
Mortality**  
*Reaching More First Birthdays*



**EVERY BABY MATTERS**

**OEI**

**OHIO INSTITUTE FOR EQUITY IN BIRTH OUTCOMES**

## Butler County Partnership to Reduce Infant Mortality (PRIM)

Ohio Equity Institute

Infant Mortality Quarterly Update

Quarter 1 (October-December 2017)



# Table of Contents

Introduction .....	2
Infant Mortality Trends .....	3
Quarterly Data .....	5
Preterm Birth.....	6
Low Birth Weight.....	7
Infant Mortality Rate by Medicaid.....	8
Infant Mortality Rate by Smoking.....	9
Place Matters.....	10
Other Infant Mortality Risk Factors.....	12
BC OEI Interventions.....	13
References .....	15
Data Tables .....	16

## Contact Information

Do you want to get involved with Butler County's Partnership to Reduce Infant Mortality?

Do you have questions about the OEI Quarterly Report?

We would love for you to join in our work!  
Get in touch with by phone or visit our website!

Butler County Health Department  
301 South Third Street  
Hamilton, OH 45011

Phone  
513.887.5251

Website

<http://www.butlerfcfc.org/page/butler-county-partnership-to-reduce-infant-mortality>



# Introduction

The Ohio Equity Institute (OEI) began in 2013 and is a partnership between the Ohio Department of Health (ODH) and nine Ohio counties including Butler County. The nine counties in Ohio were selected because they account for a large part of all infant deaths in the State. This partnership exists to improve birth outcomes and reduce the racial disparities in infant deaths. The initiative is designed to strengthen the scientific focus and evidence base for realizing equity in birth outcomes in nine of Ohio's major metropolitan areas.

This report provides background information on birth outcomes and infant mortality in Butler County, current infant mortality interventions in Butler County, and current data trends in infant mortality in the county.

The local infant mortality coalition in Butler County is the Butler County Partnership to Reduce Infant Mortality (PRIM). PRIM was formed in 2014 and is coordinated by the PRIM Lead Team. The Butler County PRIM Lead Team initially chose to focus on CenteringPregnancy™ as an upstream intervention, and smoking cessation as a downstream intervention. Currently, PRIM's intervention projects include the previously discussed interventions as well as a breastfeeding support initiative, a safe sleep initiative, community engagement, and a partnership with the United Way to develop a 2-1-1 Babylink line for pregnancy and infant care needs. These interventions were chosen based on input from the community, data analysis of Butler County's most pressing needs, the community capacity, and a review of infant mortality literature.

Birth and death data notes: These data were provided by the Ohio Department of Health. ODH specifically disclaims responsibility for any analyses, interpretations, or conclusions. All analyses, interpretations, and conclusions were developed by the OEI PRIM Epidemiologist at the Butler County Health Department. The Ohio Department of Health disclaims responsibility for any findings within this report.



# Infant Mortality Trends

The Infant Mortality Rate (IMR) is widely accepted as one of the most sensitive indicators of the health of a community. An infant death is the death of a baby before his or her first birthday. The Infant Mortality Rate is calculated as the number of infant deaths that occur for every 1,000 live births per year<sup>1-2</sup>.

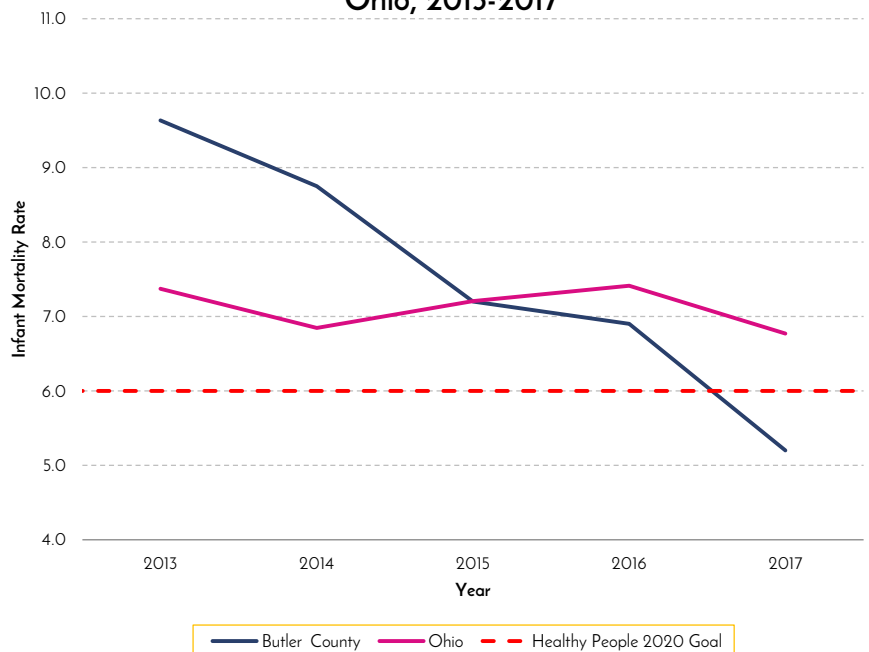
**6.0**

**Healthy People 2020 Goal for  
Infant Mortality Rate in the United  
States**

**5.2**

**In 2017, Butler County's overall IMR  
was lower than the Healthy People  
2020 Goal for Infant Mortality**

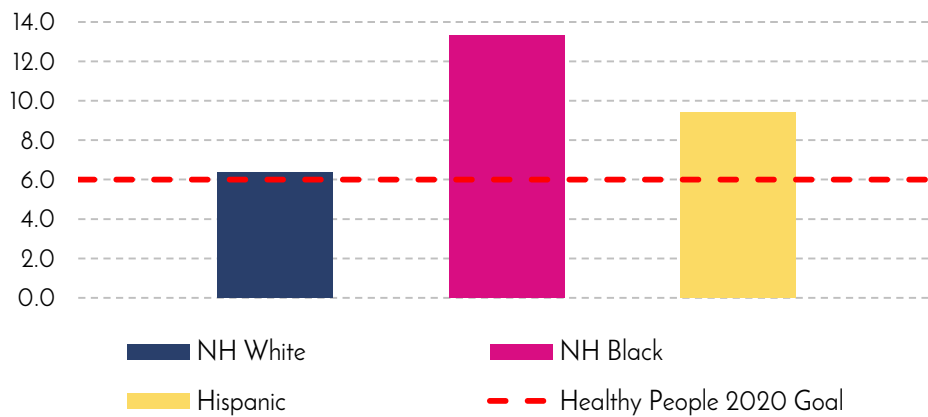
**Infant Mortality Rate by Year in Butler County and  
Ohio, 2013-2017**



Overall, Butler County's IMR has been decreasing since 2012. In 2017, the IMR was lower than the Healthy People 2020 goal of 6.0 deaths per 1000 live births. The figure above shows the yearly Infant Mortality Rate in Butler County and Ohio from 2013-2017 and the Healthy People 2020 Goal.

Although infant mortality has decreased as a whole in Butler County, there still remains a significant difference in birth outcomes by race and ethnicity. Despite efforts to improve health, the non-Hispanic black IMR is still approximately two times higher than the non-Hispanic white IMR.

### Butler County Infant Mortality Rate by Race, 2013-2017



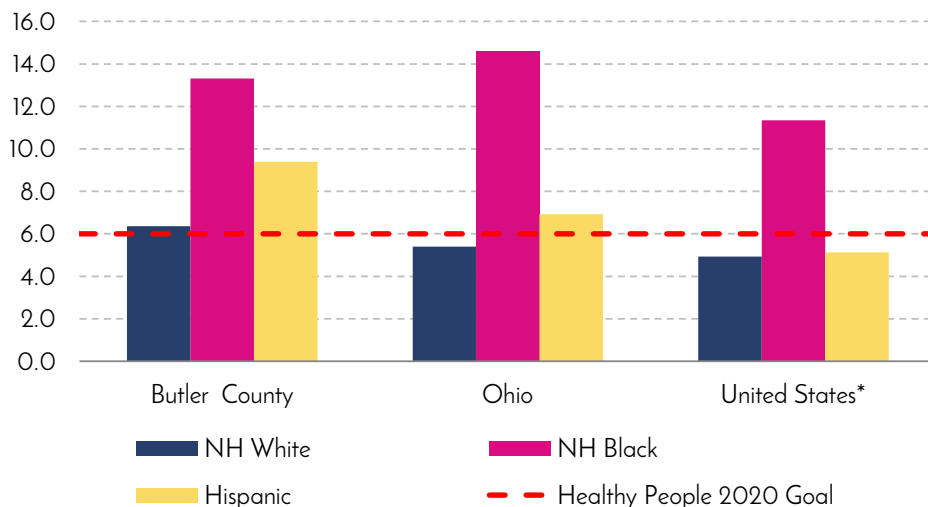
**6.5**

2013-2017  
non-Hispanic **White**  
IMR in Butler County

**13.3**

2013-2017  
non-Hispanic **Black**  
IMR in Butler County

### Butler County, Ohio, US Infant Mortality Rate by Race, 2013-2017



**14.6**

2013-2017  
non-Hispanic **Black**  
IMR in **Ohio**

**11.4**

2012-2015  
non-Hispanic **Black**  
IMR in the **United States\***

State and Nationwide data show very similar trends in Infant Mortality. In the United States, Non-Hispanic Whites and Hispanics are below the Healthy People 2020 goal of 6.0 infant deaths per 1000 live births. However, in Ohio and Butler County the infant mortality rate for Non-Hispanic Black and Hispanic babies is higher than the Healthy People 2020 Goal.



# 2018 Quarterly Infant Mortality Data

Quarterly infant mortality data for this report reflects the OEI grant year (October 1st 2017-September 30th 2018), not a calendar year.

		2017		IMR	2018		IMR
		Infant Deaths	Live Births		Infant Deaths	Live Births	
Quarter2	January	2	352	5.0 per 1000 live births			
	February	2	291				
	March	1	357				
Quarter3	April	4	365	4.52 per 1000 live births			
	May	0	349				
	June	1	393				
Quarter4	July	2	409	6.46 per 1000 live births			
	August	3	399				
	September	3	431				
Quarter1	October	2	391	4.48 per 1000 live births			
	November	1	369				
	December	2	355				

**4.48**

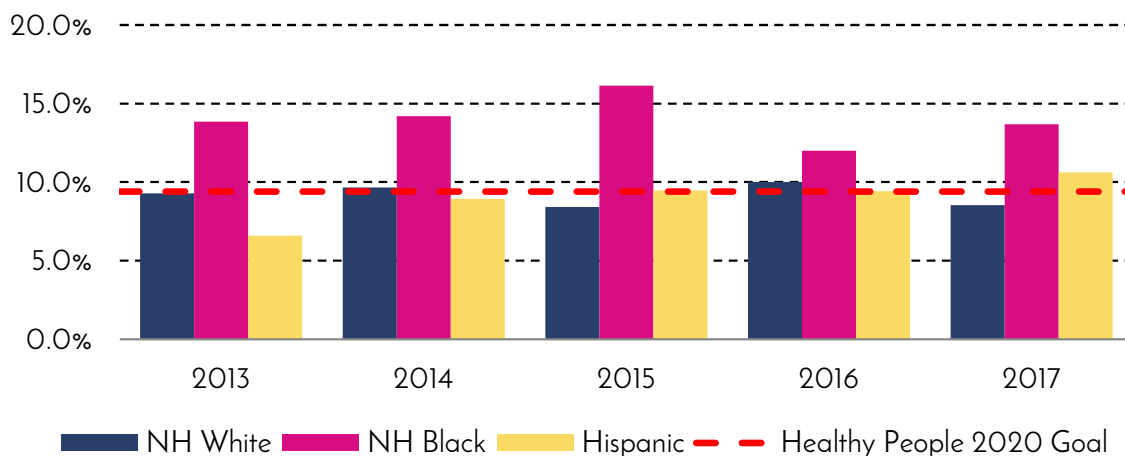
IMR for Quarter 1  
(October-December 2017)  
of 2018



# Preterm Birth

Preterm birth is defined as the birth of an infant before 37 completed gestational weeks. Preterm Birth is one of the greatest contributors to infant death and disability. The last few weeks of pregnancy are when the baby goes through some of the most important growth<sup>3-4</sup>. The figure below shows the preterm birth rate in Butler County by race from 2013-2017. Preterm Birth rates have remained relatively steady overall from 2013-2017 in Butler County. There is a disparity in Black preterm birth rates, which are consistently higher than other races, and from 2013-2017 showed an upward trend. In 2017, the preterm birth rate for non-Hispanic white babies in Butler County (8.5%) was lower than the healthy people 2020 goal (9.4%). The preterm birth rate for non-Hispanic Black babies (13.7%) and Hispanic babies (10.6%) in Butler County were both higher than the Healthy People 2020 Goal (9.4%)

## Butler County Preterm Birth Rate by Race, 2013-2017



**14.0%**  
2013-2017 non-Hispanic  
**Black** Preterm  
Birth Rate in Butler County

**9.2%**  
2013-2017 non-Hispanic  
**White** Preterm  
Birth Rate in Butler County

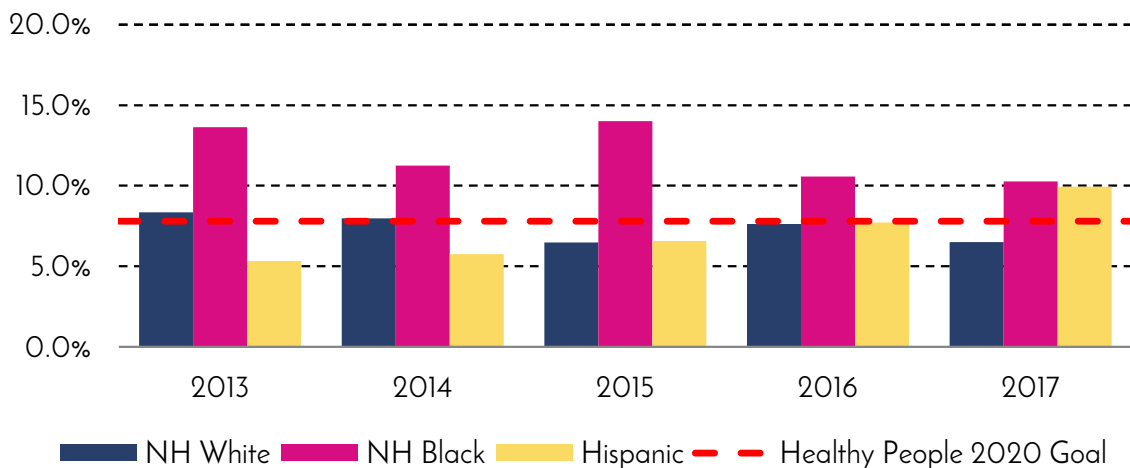
Source: 2013-2017 Ohio Department of Health, Ohio Public Health Information Secure Data Warehouse  
Data for 2017 is provisional; ODH finalizes data by fall of the subsequent year.



# Low Birth Weight

Low birth weight is defined as an infant weighing less than 2,500 grams (approximately 5.5 pounds) at birth. Low birth weight is a risk factor for infant mortality and morbidity<sup>5</sup>. The figure below shows the low birth weight birth rate in Butler County by race from 2013 to 2017. In 2017, the low birth weight birth rate for non-Hispanic white babies in Butler County (6.5%) was lower than the Healthy People 2020 Goal (7.8%). The low birth weight birth rate for non-Hispanic black (10.3%) and Hispanic (9.9%) babies in Butler County were both higher than the Healthy People 2020 Goal (7.8%)

## Butler County Low Birth Weight Birth Rate by Race, 2013-2017



**11.9%**  
2013-2017 non-Hispanic  
**Black** Low Birth Weight  
Birth Rate in Butler County

**7.4%**  
2013-2017 non-Hispanic  
**White** Low Birth Weight  
Birth Rate in Butler County



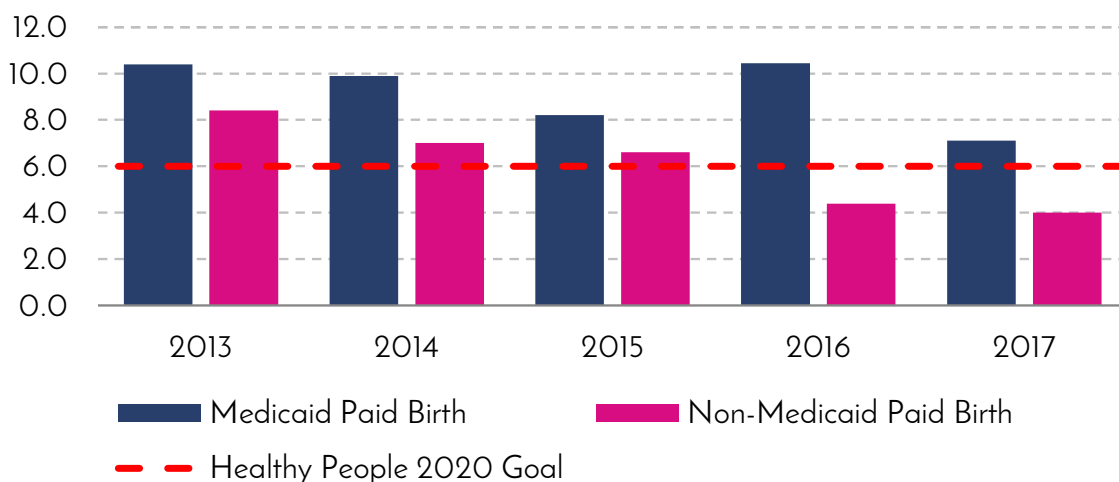


# Infant Mortality Rate by Medicaid Status

Income status is one of the most important indicators of infant vitality in Butler County and in the United States.

Since income status is not directly measured by birth or death certificate data, income data must be imputed from other indicators. One way to measure income is by looking at Medicaid status. Medicaid status in this report is defined as Medicaid being the primary source of payment for a birth in Butler County. Medicaid enrollment is

## Butler County Infant Mortality Rate by Medicaid Status, 2013-2017



**9.2**

2013-2017 IMR for  
**Medicaid Paid** Births in  
Butler County

**6.1**

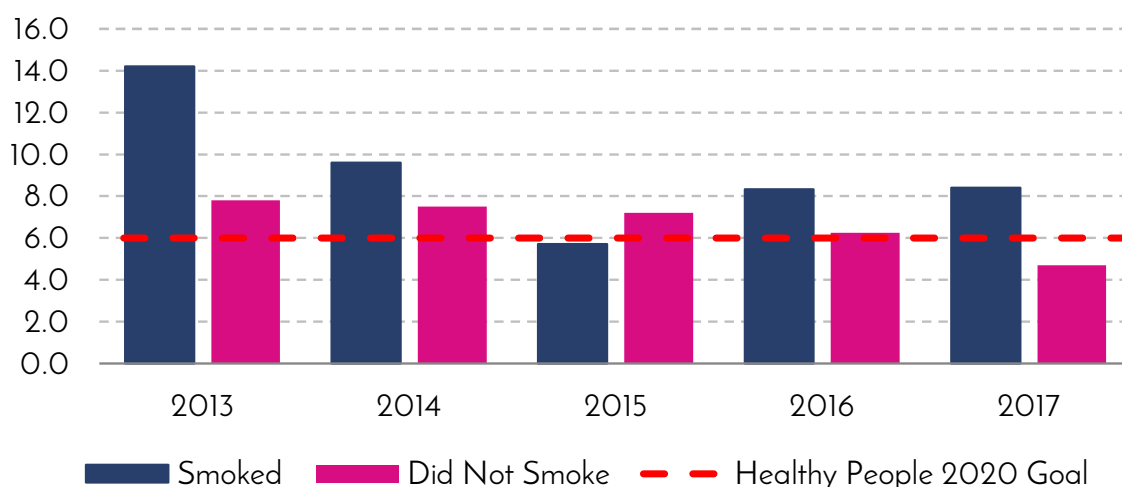
2013-2017 IMR for  
**non-Medicaid Paid** Births  
in Butler County



# Infant Moratlity Rate by Smoking Status

In 2017, infants with mothers who smoked had a much higher rate of infant mortality (8.4 per 1000) than non-smoking mothers (4.7 per 1000) in Butler County. Smoking during pregnancy is defined as smoking 1 or more cigarettes during any of the three trimesters of pregnancy.

## Butler County Infant Mortality Rate by Smoking Status, 2013-2017



**9.2**

2013-2017 IMR for mothers who **smoked** in Butler County

**6.7**

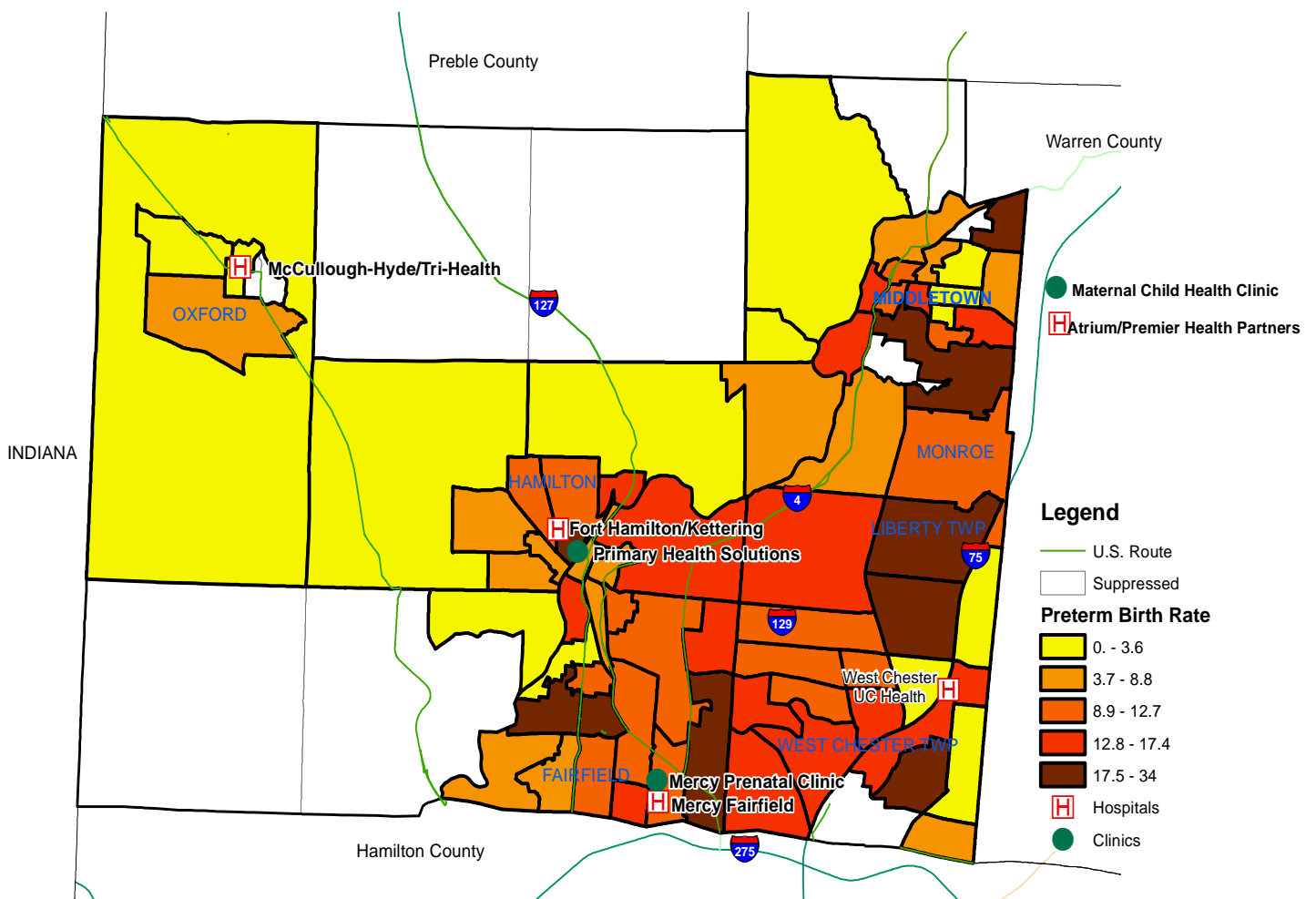
2013-2017 IMR for mothers who **did not smoke** in Butler County



# Place Matters

As is the case around the United States and around the world, Butler County has disparate health outcomes in different parts of the county. The following maps show the non-Hispanic black preterm birth rate and low birth weight birth rate by census tract for Butler County. The maps also include the location of hospitals and maternal and child health clinics. These maps were used to identify hot spot locations for low birth weight and prematurity.

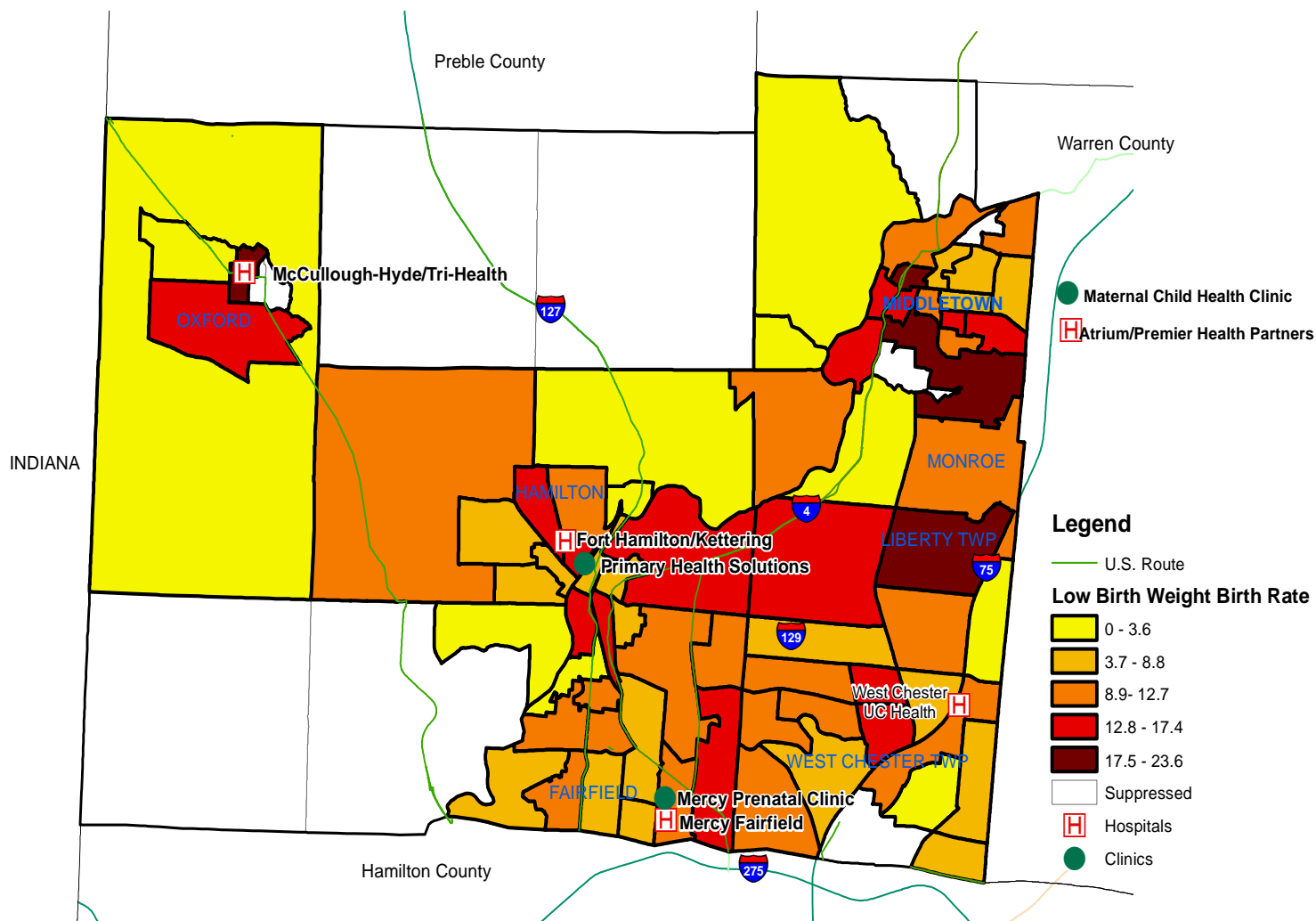
## Non-Hispanic Black Preterm Birth Rate by Census Tract, Butler County, 2007-2017



Areas where data are suppressed are due to small number of total births and preterm births to non-Hispanic Black residents  
Source: Ohio Department of Health (ODH), Ohio Public Information Warehouse, 2007-2017 Birth Data Set



## Non-Hispanic Black Low Birth Weight Birth Rate by Census Tract, Butler County, 2007-2017



Areas where data are suppressed are due to small number of total births and preterm births to non-Hispanic Black residents  
 Source: Ohio Department of Health (ODH), Ohio Public Information Warehouse, 2007-2017 Birth Data Set



## Other Risk Factors for Poor Birth Outcomes

Previous data analyses have shown Marital Status, Smoking, and Obesity as important infant health risk factors in Butler County. The table below compares percentage of poor birth outcomes between these and other risk factors. A poor birth outcome is defined as a preterm birth (before 37 completed weeks of gestation), a low birth weight birth (weighing less than 2500 grams) or a small for gestational age birth (birth weight below the 10th percentile for babies of the same gestational age).

% of Butler County Births with Poor Birth Outcomes 2013-2017	
<b>Race</b>	
Black	26.8%
White	16.8%
<b>Medicaid Status</b>	
Medicaid	21.8%
Non-Medicaid	15.9%
<b>Weight Status</b>	
Obese (BMI $\geq 30$ )	17.2%
Normal Weight	18.1%
<b>Smoking Status</b>	
Smokers	27.9%
Non-Smokers	16.5%
<b>Marriage Status</b>	
Unmarried	21.6%
Married	15.7%
<b>Prenatal Care</b>	
Early (During 1 <sup>st</sup> Trimester)	16.3%
Late (2 <sup>nd</sup> or 3 <sup>rd</sup> Trimester)	19.5%
None	44.0%
<b>Birth Spacing*</b>	
Short (<18 months)	15.8%
Optimal (>19 and <60 months)	14.4%
Long (>60 months)	18.7%

\* Birth spacing is defined as the # months between last live birth and conception of next pregnancy





# Butler County Partnership to Reduce Infant Mortality Interventions

- CenteringPregnancy

Two sites -Atrium Medical Center and Primary Health Solutions

- Smoking Cessation

Envision Partnerships: Moms Quit for Two

- Breastfeeding Support

Butler County Breastfeeding Coalition and Butler County WIC

- Safe Sleep

Cribs for Kids (Free Cribettes in partnership with 7 distribution sites)

- Community Engagement

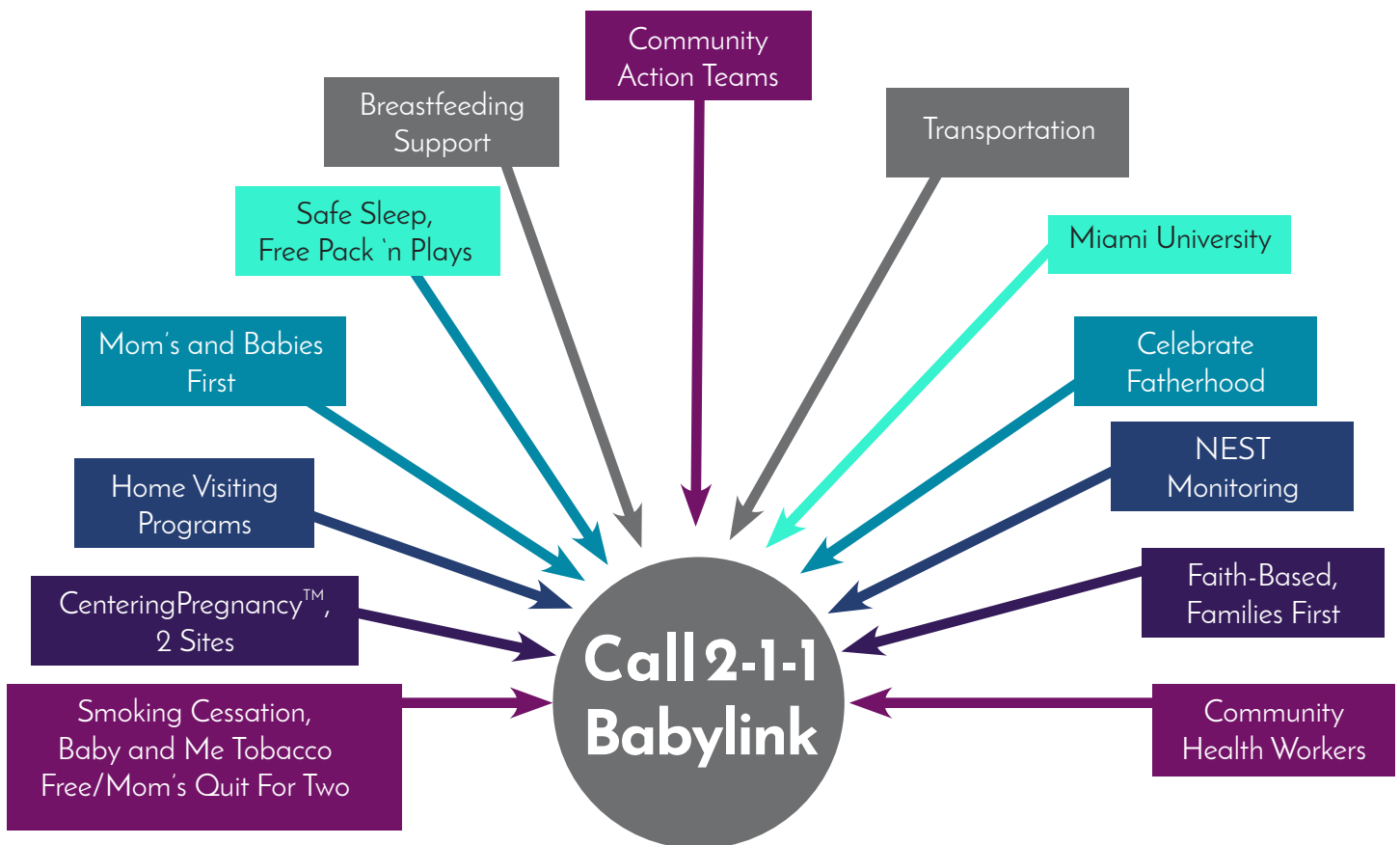
Transition from a grassroots-focused team to implementation-focused team

- 2-1-1 Babylink (A United Way Collaboration)

24-7 hotline for referrals and resources related to pregnancy and infants



# Butler County PRIM: Current Programs in Butler County



Helping Butler County Babies Reach Their First Birthdays...  
And Beyond!



## References

1. Reidpath, D.D., & Allotey, P. (2003). Infant Mortality Rate as an Indicator of Population Health. *Journal of Epidemiology & Community Health*, 57(5), 344-346. doi:10.1136/jech.57.5.344
2. Centers for Disease Control and Prevention. Infant Mortality. (2016, September 28). Retrieved from <http://www.cdc.gov/reproductivehealth/maternalinfanthealth/infantmortality.htm>
3. Centers for Disease Control and Prevention. Preterm Birth. (2015, December 4). Retrieved from <http://www.cdc.gov/reproductivehealth/maternalinfanthealth/PretermBirth.htm>
4. Oken, E., Kleinman, K.P., Richard-Edwards, J., & Gillman, M.W. (2003, July 8). A Nearly Continuous Measure of Birth Weight for Gestational Age using a United States National Reference. Retrieved from <http://bmcpediatr.biomedcentral.com/articles/10.1186/1471-2431-3-6>
5. Centers for Disease Control and Prevention. Tobacco Use and Pregnancy. (2016, July 20). Retrieved from <http://www.cdc.gov/reproductivehealth/maternalinfanthealth/TobaccoUsePregnancy/index.htm>
6. Oken, E., Kleinman, K.P., Richard-Edwards, J., & Gillman, M.W. (2007). Maternal Smoking During Pregnancy and Child Overweight: Systematic Review and Meta-Analysis. *International Journal of Obesity*, 32(2), 201-210. doi:10.1038/sj/ijo.0803760
7. Cordeiro, Christina N. "Tobacco Use in Pregnancy." *Postgraduate Obstetrics and Gynecology* 35.5 (2015): 1-7. 10.1097/O1.PGO.0000461293.66975.7f. Web.
8. Picklesimer, A.H., Billings, D., Hale, N., Blackhurst, D., & Covington-Kolb, S., (2012). The Effect of CenteringPregnancy Group Prenatal Care on Preterm Birth in a Low-Income Population. *American Journal of Obstetrics and Gynecology*, 206(5), 415-e1.
9. Massey, Z., Rising, S.S., & Ickovics, J. (2006). CenteringPregnancy Group Prenatal Care: Promoting Relationship-Centered Care. *Journal of Obstetric, Gynecologic, & Neonatal Nursing*, 35(2), 286-294

Images Courtesy of:

©iStockphoto.com/monkeybusinessimages | ©iStockphoto.com/\_jure | ©iStockphoto.com/KQconcepts  
©iStockphoto.com/b-d-s | ©iStockphoto.com/Halfpoint



# Data Tables

Table 1. Butler County Infant Mortality Rate by Race, 2012-2017

		Infant Deaths	Total Births	Infant Mortality Rate
non-Hispanic White	2012	30	3,653	<b>8.2</b>
	2013	34	3,464	<b>9.8</b>
	2014	30	3,474	<b>8.6</b>
	2015	20	3,562	<b>5.6</b>
	2016	15	3,355	<b>4.5</b>
	2017	11	3,295	<b>3.3</b>
non-Hispanic Black	2012	7	433	<b>16.2</b>
	2013	5	491	<b>10.2</b>
	2014	3	444	<b>6.8</b>
	2015	10	471	<b>21.2</b>
	2016	8	492	<b>16.3</b>
	2017	6	497	<b>12.1</b>
Hispanic	2012	1	357	<b>2.8</b>
	2013	2	318	<b>6.3</b>
	2014	4	347	<b>11.5</b>
	2015	3	380	<b>7.9</b>
	2016	5	414	<b>12.1</b>
	2017	4	433	<b>9.2</b>
Butler County (Total)	2012	39	4,640	<b>8.4</b>
	2013	43	4,463	<b>9.6</b>
	2014	39	4,457	<b>8.8</b>
	2015	33	4,604	<b>7.2</b>
	2016	31	4,475	<b>6.9</b>
	2017	23	4,461	<b>5.2</b>

Source: 2012-2017 Ohio Department of Health, Ohio Public Health Information Secure Data Warehouse

**Table 2. Butler County Infant Mortality Ratio**

	non-Hispanic Black IMR	non-Hispanic White IMR	Infant Mortality Ratio
2012	16.2	8.2	<b>2.0</b>
2013	10.2	9.8	<b>1.0</b>
2014	6.8	8.6	<b>0.8</b>
2015	21.2	5.6	<b>3.8</b>
2016	16.3	4.5	<b>3.6</b>
2017	12.1	3.3	<b>3.7</b>

**Table 3. Butler County Preterm Birth Rate by Race, 2012-2017**

		Preterm Births	Total Births	Preterm Birth Rate
non-Hispanic White	2012	361	3,653	<b>9.9%</b>
	2013	322	3,464	<b>9.3%</b>
	2014	336	3,474	<b>9.7%</b>
	2015	300	3,562	<b>8.4%</b>
	2016	336	3,355	<b>10.0%</b>
	2017	281	3,295	<b>8.5%</b>
non-Hispanic Black	2012	53	433	<b>12.2%</b>
	2013	68	491	<b>13.8%</b>
	2014	63	444	<b>14.2%</b>
	2015	75	471	<b>15.9%</b>
	2016	59	492	<b>12.0%</b>
	2017	68	497	<b>13.7%</b>
Hispanic	2012	30	357	<b>8.4%</b>
	2013	21	318	<b>6.6%</b>
	2014	31	347	<b>8.9%</b>
	2015	36	380	<b>9.5%</b>
	2016	39	414	<b>9.4%</b>
	2017	46	433	<b>10.6%</b>
Butler County (Total)	2012	465	4,640	<b>10.0%</b>
	2013	424	4,463	<b>9.5%</b>
	2014	454	4,457	<b>10.2%</b>
	2015	429	4,604	<b>9.3%</b>
	2016	451	4,475	<b>10.1%</b>
	2017	422	4,461	<b>9.5%</b>

Source: 2011-2017 Ohio Department of Health, Ohio Public Health Information Secure Data Warehouse



**Table 4. Butler County Low Birthweight Birth Rate by Race, 2012–2017**

		LBW Births	Total Births	LBW Birth Rate
non-Hispanic White	2012	278	3,653	<b>7.6%</b>
	2013	289	3,464	<b>8.3%</b>
	2014	276	3,474	<b>7.9%</b>
	2015	231	3,562	<b>6.5%</b>
	2016	256	3,355	<b>7.6%</b>
	2017	214	3,295	<b>6.5%</b>
non-Hispanic Black	2012	48	433	<b>11.1%</b>
	2013	67	491	<b>13.6%</b>
	2014	50	444	<b>11.3%</b>
	2015	65	471	<b>13.8%</b>
	2016	52	492	<b>10.6%</b>
	2017	51	497	<b>10.3%</b>
Hispanic	2012	20	357	<b>5.6%</b>
	2013	17	318	<b>5.3%</b>
	2014	20	347	<b>5.8%</b>
	2015	25	380	<b>6.6%</b>
	2016	32	414	<b>7.7%</b>
	2017	43	433	<b>9.9%</b>
Butler County (Total)	2012	372	4,640	<b>8.0%</b>
	2013	387	4,463	<b>8.7%</b>
	2014	364	4,457	<b>8.2%</b>
	2015	340	4,604	<b>7.4%</b>
	2016	355	4,475	<b>7.9%</b>
	2017	337	4,461	<b>7.6%</b>

Source: 2012-2017 Ohio Department of Health, Ohio Public Health Information Secure Data Warehouse



PRIM is a Community Initiative of the  
Butler County Health Department  
301 South Third Street  
Hamilton, OH 45011



**Public Health**  
Prevent. Promote. Protect.

**Butler County  
Health Department**

