



Public Health
Prevent. Promote. Protect.

Butler County
General Health District

Butler County General Health District
Seasonal Influenza-Associated Hospitalizations Report
MMWR Week 46
11/13/2022 – 11/19/2022

Weekly Influenza-Associated Hospitalizations Activity Summary:
Butler County (MMWR Week 46, ending on 11/19/2022):

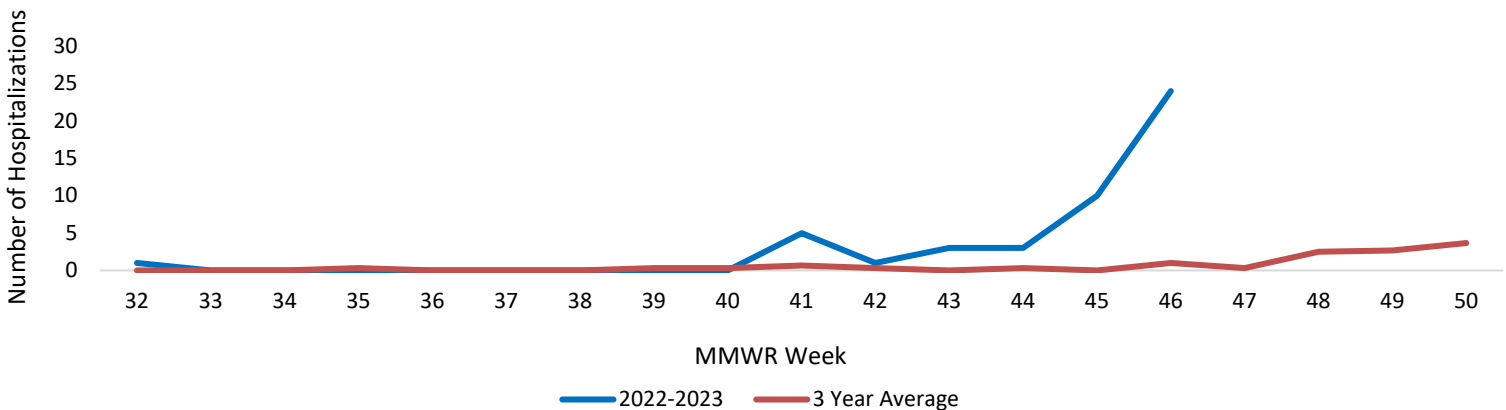
Butler County saw twenty-four confirmed influenza-associated hospitalizations for the MMWR week ending 11/19/2022. This is a total of forty-eight confirmed influenza-associated hospitalizations for the 2022-2023 influenza season thus far in Butler County. It is important to keep in mind that influenza itself is not reportable; only influenza-related hospitalizations. Thus, surveillance on influenza and other respiratory illnesses is difficult to track on a local level. The best way to prevent influenza infection is to get vaccinated.

Table 1.* Confirmed Influenza-Associated Hospitalizations
Butler County Residents, 2022-2023 Influenza Season

MMWR Week	Week Ending	Weekly Total
32	08/13/2022	1
33	08/20/2022	0
34	08/27/2022	0
35	09/03/2022	0
36	09/10/2022	0
37	09/17/2022	0
38	09/24/2022	1
39	10/01/2022	0
40	10/08/2022	0
41	10/15/2022	5
42	10/22/2022	1
43	10/29/2022	3
44	11/05/2022	3
45	11/12/2022	10
46	11/19/2022	24
Season Total (thus far):	As of 11/19/2022	48

Butler County Weekly Surveillance

Figure 1. Newly Confirmed Influenza-Associated Hospitalizations by MMWR Week with Past 3-Year Baseline
Average for Butler County Residents
(excluding 2020-2021 Flu Season#)



*Data is provisional and subject to change due to delays in reporting. Report reflects the period of 08/07/2022 – 11/19/2022 (MMWR Week 32 to Week 46 of 2022). Data accessed from the Ohio Disease Reporting System (ODRS) on 11/23/2022. #3 year average does not include the 2020-2021 flu season. *Southwest Ohio includes hospitalizations from the following counties and their respective jurisdictions: Adams, Brown, Butler, Clermont, Clinton, Hamilton, Highland and Warren.

Butler County Influenza-Associated Hospitalizations Demographics

Figure 2. Percent of Hospitalizations by Age Group

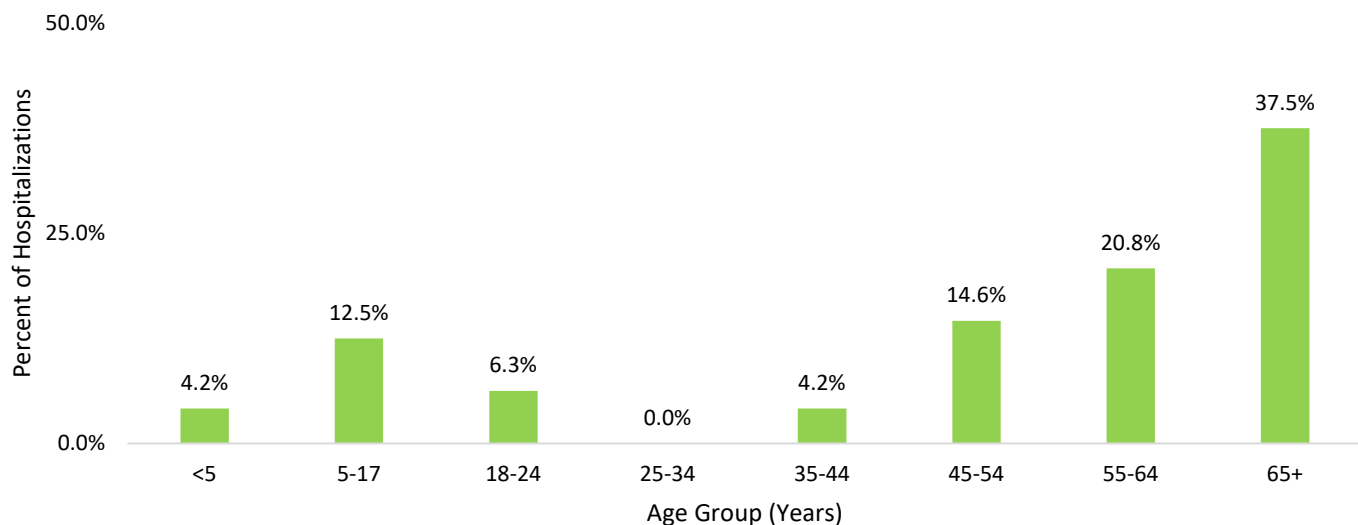


Figure 3. Percent of Hospitalizations by Sex

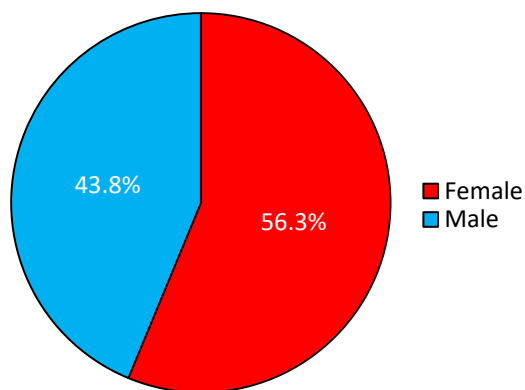
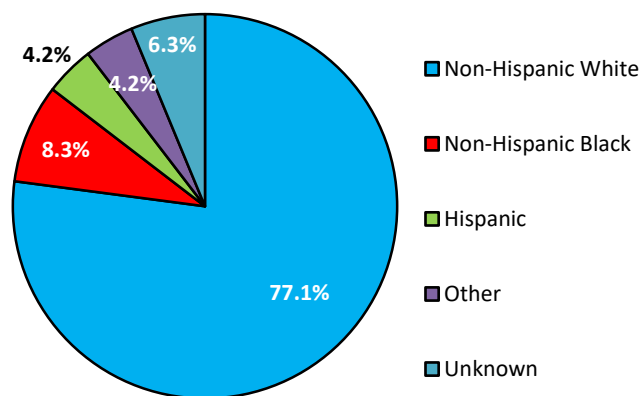
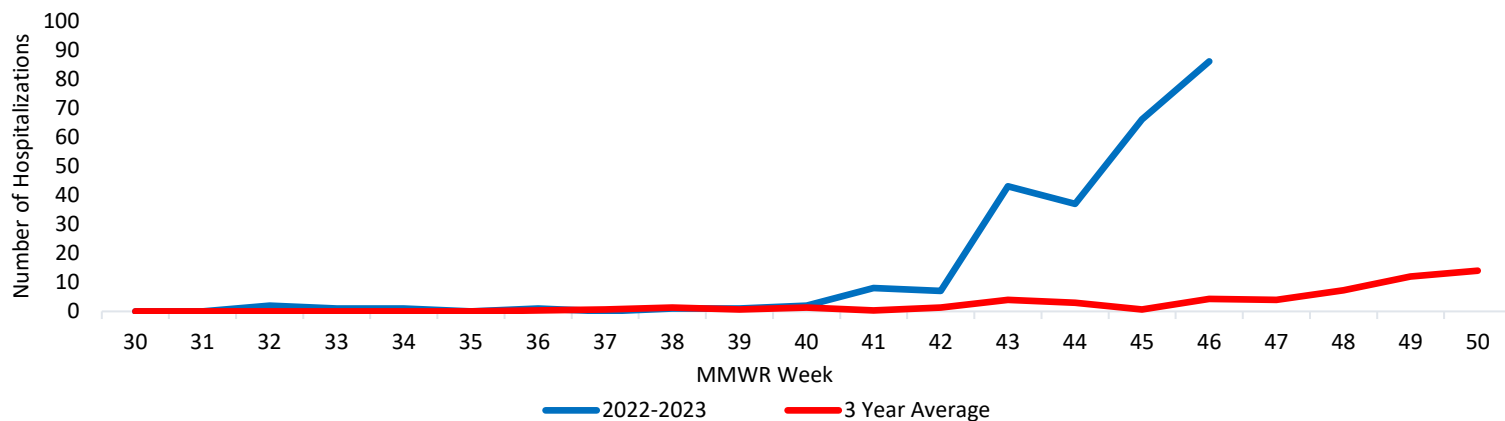


Figure 4. Percent of Hospitalizations by Race and Ethnicity



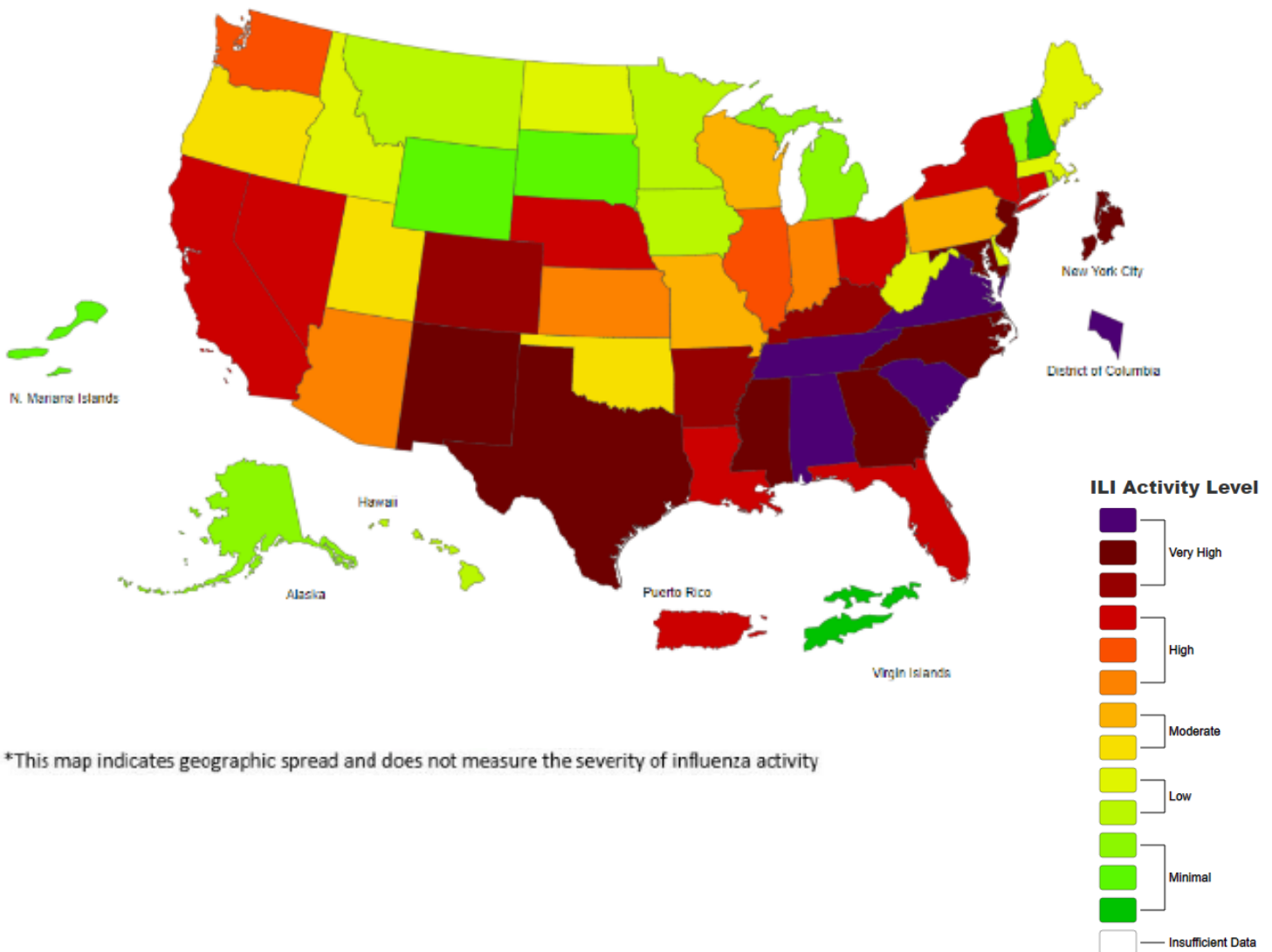
Southwest Ohio Weekly Surveillance

Figure 5. Newly Confirmed Influenza Associated Hospitalizations by MMWR Week with Past 3 Year Baseline Average for Southwest Ohio* (excluding 2020-2021 Flu Season#)



Data is provisional and subject to change due to delays in reporting. Report reflects the period of 08/07/2022 – 11/19/2022 (MMWR Week 32 to Week 46 of 2022). Data accessed from the Ohio Disease Reporting System (ODRS) on 11/23/2022. #3 year average does not include the 2020-2021 flu season. *Southwest Ohio includes hospitalizations from the following counties and their respective jurisdictions: Adams, Brown, Butler, Clermont, Clinton, Hamilton, Highland and Warren.

2022-23 Influenza Season Week 45 ending Nov 12, 2022



*This map indicates geographic spread and does not measure the severity of influenza activity

National Influenza Activity Summary <http://www.cdc.gov/flu/weekly/fluactivitysurv.htm>

Note: Flu View map updated 1 week late due to delays in data reporting to the CDC

Sources of Influenza Surveillance Data

Influenza-associated Hospitalizations (ODRS): Influenza-associated hospitalizations are reported to local health departments for entry into the Ohio Disease Reporting System (ODRS). Hospitalizations can be used as an indicator of the severity of illness during a particular influenza season. This condition became reportable in 2009.

For further information or questions, please contact:
Leah Elliott, Epidemiologist
Butler County General Health District, 513-863-1770