

Butler County General Health District's 67th COVID-19 Update (5/08/2021)

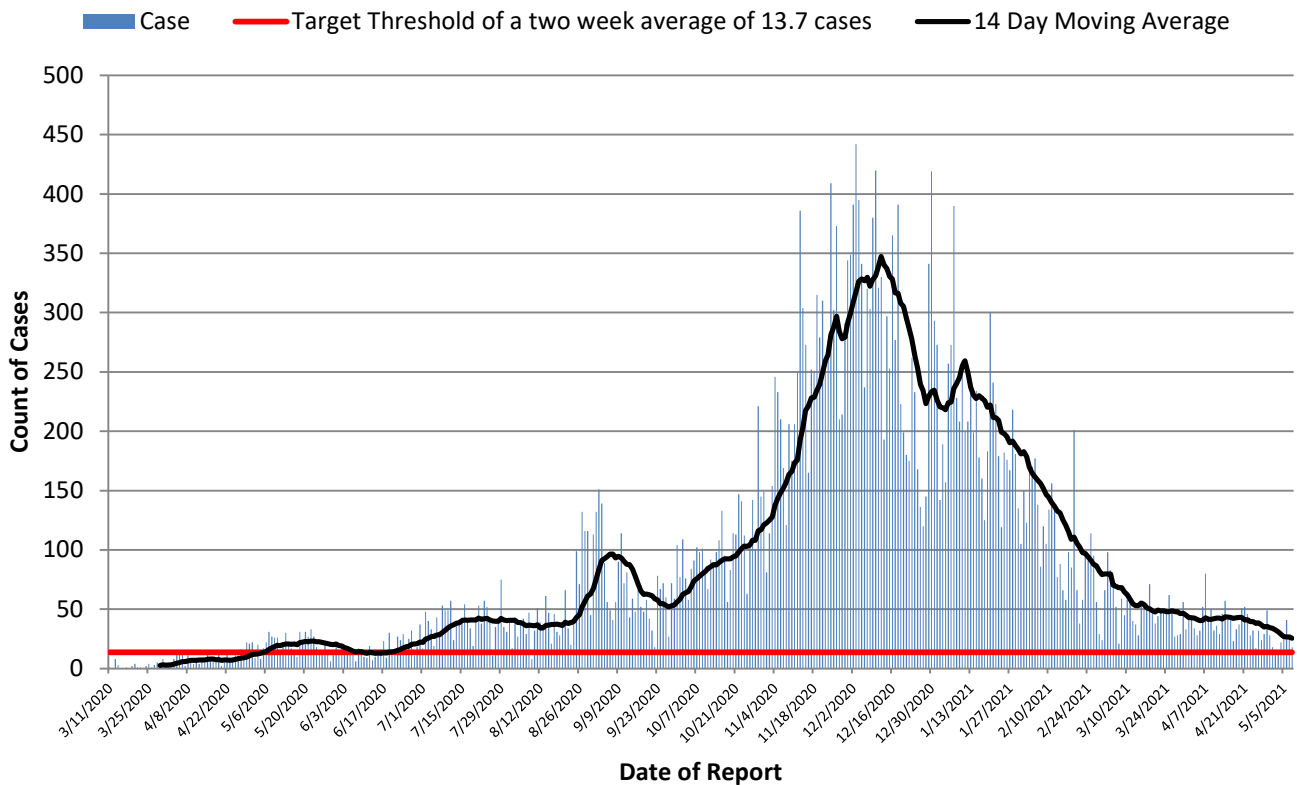
Confirmed and Probable COVID-19 Cases Reported to Butler County* Butler County Residents, 2020-21

Total # of Cases (05/08):	38,079*
ODH verified Deaths (05/08):	584**
Hospitalizations (05/08):	1,482
ICU admissions (05/08):	128
First Case Reported:	3/11/2020
Last Case Reported (so far):	5/09/2021
Confirmed Cases:	34,179
Probable Cases:	3,900
Age Range:	<1-103
Median Age:	40
Mean Age:	41.0
Incidence (thru 05/08):	9,938.8 per 100,000
Prevalence (thru 05/08):	9.9% of BC population
14-Day Positivity Rate (4/27):	3.0% of tests performed in BC

In the following tables and figures, all threshold values are equivalent.

Table 1: Indicators for Reopening for Butler County		
Indicator	Last 2 Weeks	Governor DeWine's Target
Incidence per 100,000 population	93.4 per 100,000	50 per 100,000
Cumulative Case Count	358 through 14 days	191.6 through 14 days
Daily Average of new cases	25.6 per day through 14 days	13.7 per day through 14 days

Figure 1. Reported Cases of COVID-19 by Date of Report*



All figures show reported cases of COVID-19 in Butler County as of 1700 EDT 05/12/2021. Due to delays in reporting, the numbers of confirmed and probable cases on all figures are subject to change between reports and confirmed and probable case counts are likely to increase. **This should not be assumed to be the total disease burden of COVID-19 in Butler County only those that have been laboratory confirmed OR meet ODH probable case criteria AND reported to Public Health.

*Data is provisional – only confirmed or probable COVID-19 cases are included in counts. Report reflects time period since the introduction of SARS-CoV-2 into humans, measured in days. Data accessed from the Ohio Disease Reporting System (ODRS) on 05/12/2021 at 1700 EST.

**Deaths are now reconciled to the Ohio Department of Health's available data to avoid discrepancies between the state and local numbers. ODH's protocol has changed to avoid reconciliation errors and now only includes those deaths that have been reconciled with Vital statistics and may not match what has been reported to the CDC which are provisional numbers. This is a lagging indicator and will be multiple weeks behind.

#Data collected from Ohio Impact-SIIS 05/10/2021

Figure 2. Cumulative Count of Cases of COVID-19 Reported by day previous two weeks

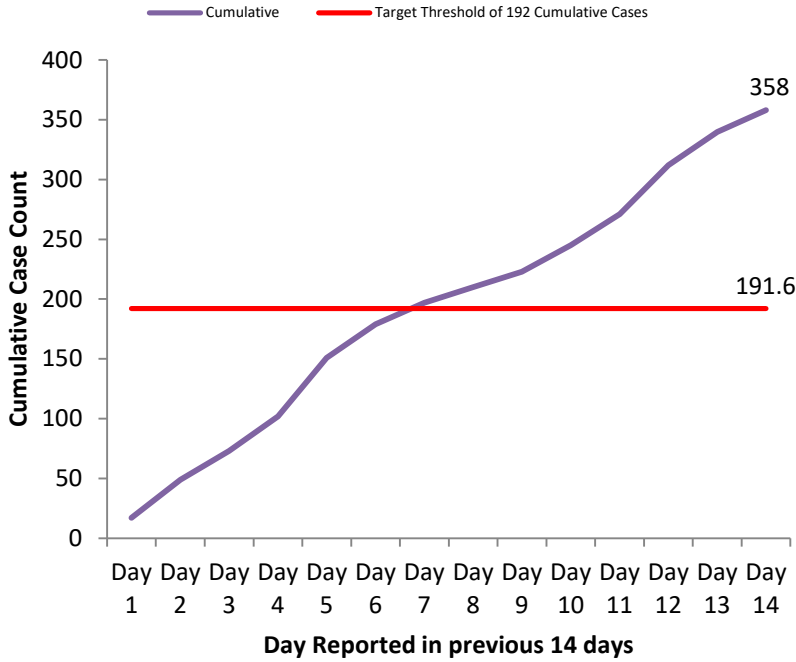


Figure 3. Cases per 100,000 population Reported in 2021

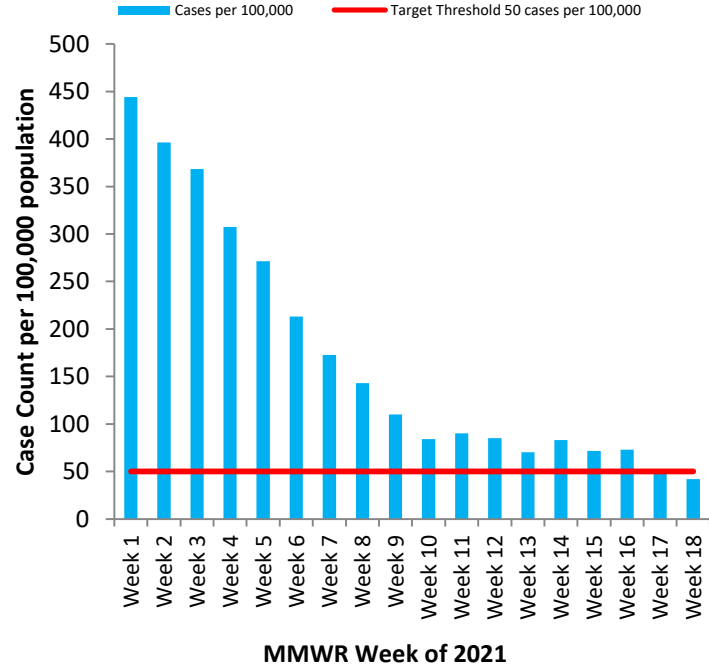


Table 2: Total Reported* Cases by ZIP Code

ZIP Code	Number of Cases	Change from previous week	Incidence per 100,000 thru 05/08	% of Confirmed Cases
45011	6682	↑33 (0.5%) From 6649	9590.0	17.5%
45013	5122	↑29 (0.6%) from 5093	9735.2	13.5%
45044	5070	↑ 17 (0.3%) from 5053	9598.3	13.3%
45069	4979	↑ 17 (0.3%) from 4962	10148.8	13.1%
45014	4842	↑10 (0.2%) from 4832	11025.3	12.7%
45056	3196	↑1 (<0.1%) from 3195	11820.4	8.4%
45042	2493	↑ 20 (0.8%) from 2473	9425.0	6.5%
45067	1515	↑4 (0.3%) from 1511	10900.8	4.0%
45050	1176	↑6 (0.5%) from 1170	13757.6	3.1%
45015	1004	0 (0%) from 1004	8340.3	2.6%
45241	582	↓2 (0.3%) from 584		1.5%
45053	316	↑2 (0.6%) from 314	9239.8	0.8%
45064	144	↑1 (0.7%) from 143		0.4%
45246	57	0 (0%) from 53		0.1%
45062	56	0 (0%) from 56		0.1%
Cases lacking zip code information or from zip codes with too few cases	845	-	-	2.2%
Butler County (inclusive)	38,079	↑135 (0.4%) from 37944	9,938.8	100%

Zip-codes not calculated have most of their population outside of Butler County. Rate given for comparison by population and will be higher than the actual amount. Zip-codes with too few cases have been removed for privacy concerns.

Red indicates zip codes where the percentage increase is greater than the increase from the previous week.

All figures show reported cases of COVID-19 in Butler County as of 1700 EDT 05/12/2021. Due to delays in reporting, the numbers of confirmed and probable cases on all figures are subject to change between reports and confirmed and probable case counts are likely to increase. *This should not be assumed to be the total disease burden of COVID-19 in Butler County only those that have been laboratory confirmed OR meet ODH probable case criteria AND reported to Public Health.

*Data is provisional – only confirmed or probable COVID-19 cases are included in counts. Report reflects time period since the introduction of SARS-CoV-2 into humans, measured in days. Data accessed from the Ohio Disease Reporting System (ODRS) on 05/12/2021 at 1700 EST.

**Deaths are now reconciled to the Ohio Department of Health's available data to avoid discrepancies between the state and local numbers. ODH's protocol has changed to avoid reconciliation errors and now only includes those deaths that have been reconciled with Vital statistics and may not match what has been reported to the CDC which are provisional numbers. This is a lagging indicator and will be multiple weeks behind.

#Data collected from Ohio Impact-SIIS 05/10/2021

Table 3. New Reports by MMWR Week, 2020

MMWR Week	End of Week	New Cases Reported	New Hospitalizations	New Confirmed Deaths**
11	3/14	6	1	0
12	3/21	10	3	0
13	3/28	11	6	0
14	4/4	44	18	3
15	4/11	50	16	1
16	4/18	43	10	2
17	4/25	55	19	5
18	5/2	99	16	1
19	5/9	131	18	7
20	5/16	134	17	4
21	5/23	184	26	7
22	5/30	111	12	7
23	6/6	113	16	1
24	6/13	89	10	1
25	6/20	115	13	1
26	6/27	167	19	7
27	7/4	198	10	6
28	7/11	286	18	0
29	7/18	260	26	3
30	7/25	269	12	4
31	8/1	274	9	3
32	8/8	242	17	2
33	8/15	264	14	3
34	8/22	264	14	7
35	8/29	545	24	9
36	9/5	770	14	8
37	9/12	496	18	8
38	9/19	368	17	4
39	9/26	379	14	10
40	10/3	504	10	5
41	10/10	590	16	6
42	10/17	682	28	10
43	10/24	770	25	8
44	10/31	909	43	6
45	11/7	1148	48	18
46	11/14	1540	33	13
47	11/21	1804	41	28
48	11/28	2060	54	30
49	12/05	2306	50	28
50	12/12	2692	69	30
51	12/19	2030	72	36
52	12/26	1430	52	37
53	1/2	1698	59	43
1	1/9	1638	45	25
2	1/16	1591	47	23
3	1/23	1440	34	29
4	1/30	1185	38	20
5	2/6	1066	58	14
6	2/13	836	40	14
7	2/20	682	25	11
8	2/27	558	16	8
9	3/06	429	13	4
10	3/13	323	10	3
11	3/20	345	24	3
12	3/27	326	13	4
13	4/3	270	20	6
14	4/10	317	25	5
15	4/17	287	14	2
16	4/24	270	15	1
17	5/1	213	7	0
18	5/8	163	11	0

All figures show reported cases of COVID-19 in Butler County as of 1700 EDT 05/12/2021. Due to delays in reporting, the numbers of confirmed and probable cases on all figures are subject to change between reports and confirmed and probable case counts are likely to increase. **This should not be assumed to be the total disease burden of COVID-19 in Butler County only those that have been laboratory confirmed OR meet ODH probable case criteria AND reported to Public Health.

*Data is provisional – only confirmed or probable COVID-19 cases are included in counts. Report reflects time period since the introduction of SARS-CoV-2 into humans, measured in days. Data accessed from the Ohio Disease Reporting System (ODRS) on 05/12/2021 at 1700 EST.

**Deaths are now reconciled to the Ohio Department of Health's available data to avoid discrepancies between the state and local numbers. ODH's protocol has changed to avoid reconciliation errors and now only includes those deaths that have been reconciled with Vital statistics and may not match what has been reported to the CDC which are provisional numbers. This is a lagging indicator and will be multiple weeks behind.

#Data collected from Ohio Impact-SIIS 05/10/2021

Figure 4. New Hospitalizations of Butler County Residents by Admission Date, 2020-21*

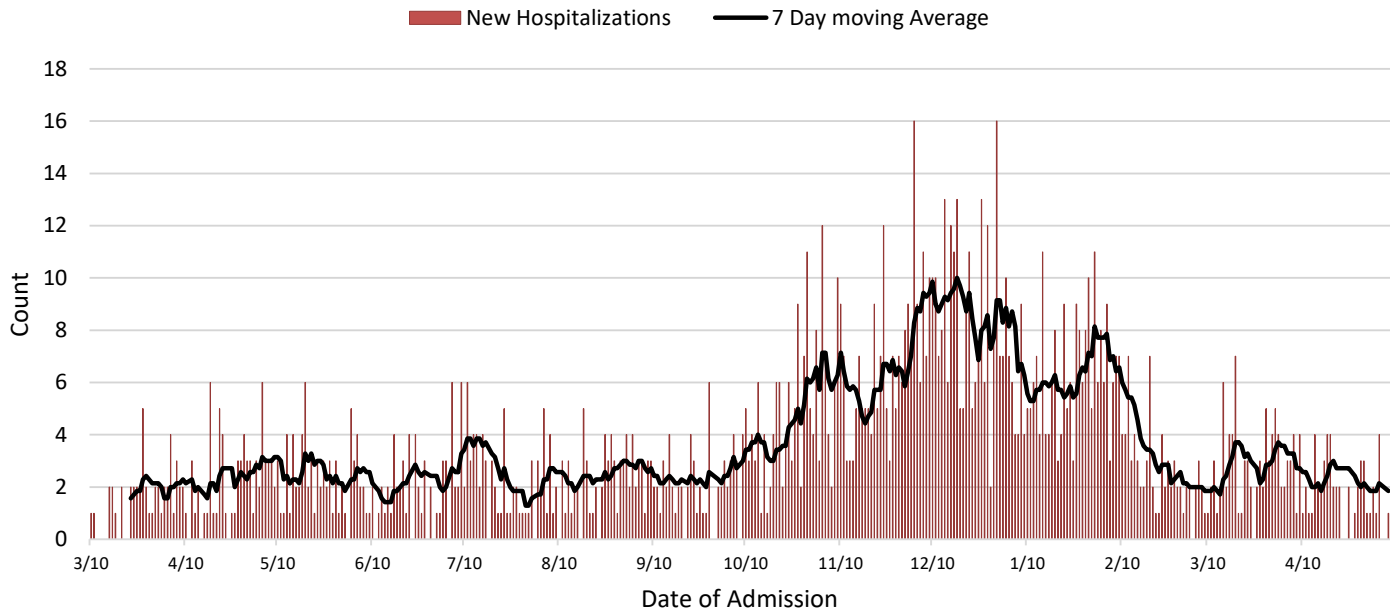
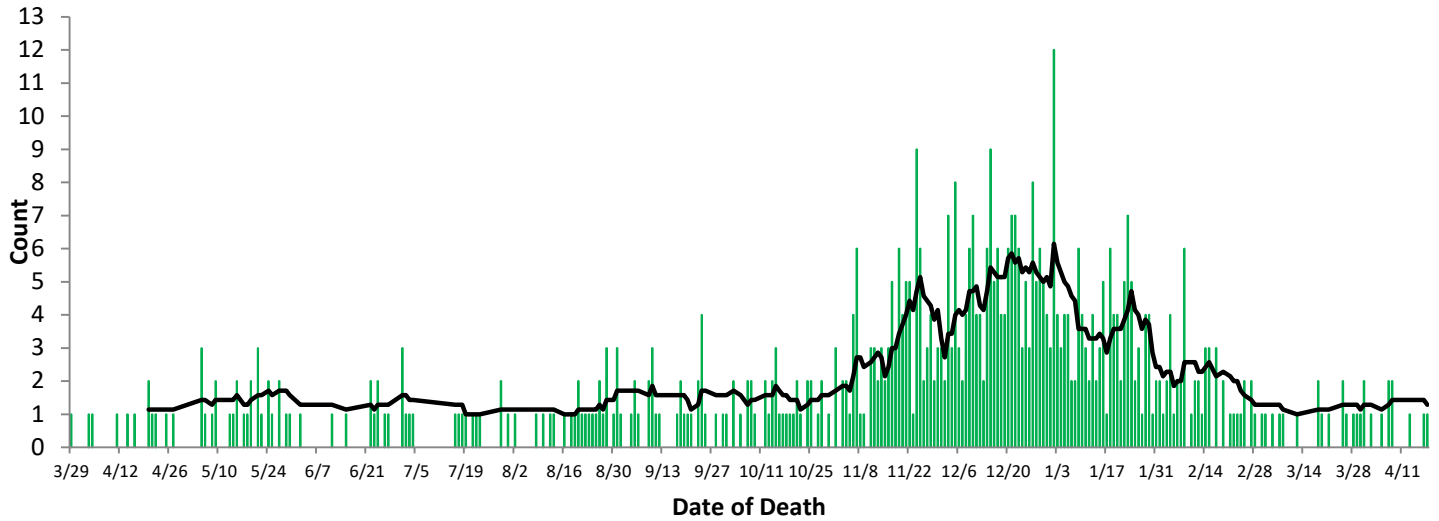


Figure 5. Confirmed COVID-19 Deaths by date of death, 2020-21**



All figures show reported cases of COVID-19 in Butler County as of 1700 EDT 05/12/2021. Due to delays in reporting, the numbers of confirmed and probable cases on all figures are subject to change between reports and confirmed and probable case counts are likely to increase. **This should not be assumed to be the total disease burden of COVID-19 in Butler County only those that have been laboratory confirmed OR meet ODH probable case criteria AND reported to Public Health.

*Data is provisional – only confirmed or probable COVID-19 cases are included in counts. Report reflects time period since the introduction of SARS-CoV-2 into humans, measured in days. Data accessed from the Ohio Disease Reporting System (ODRS) on 05/12/2021 at 1700 EST.

**Deaths are now reconciled to the Ohio Department of Health's available data to avoid discrepancies between the state and local numbers. ODH's protocol has changed to avoid reconciliation errors and now only includes those deaths that have been reconciled with Vital statistics and may not match what has been reported to the CDC which are provisional numbers. This is a lagging indicator and will be multiple weeks behind.

#Data collected from Ohio Impact-SIIS 05/10/2021

Figure 6. Butler County Data analysis performed by Cincinnati Children's Hospital Week of 5/02*

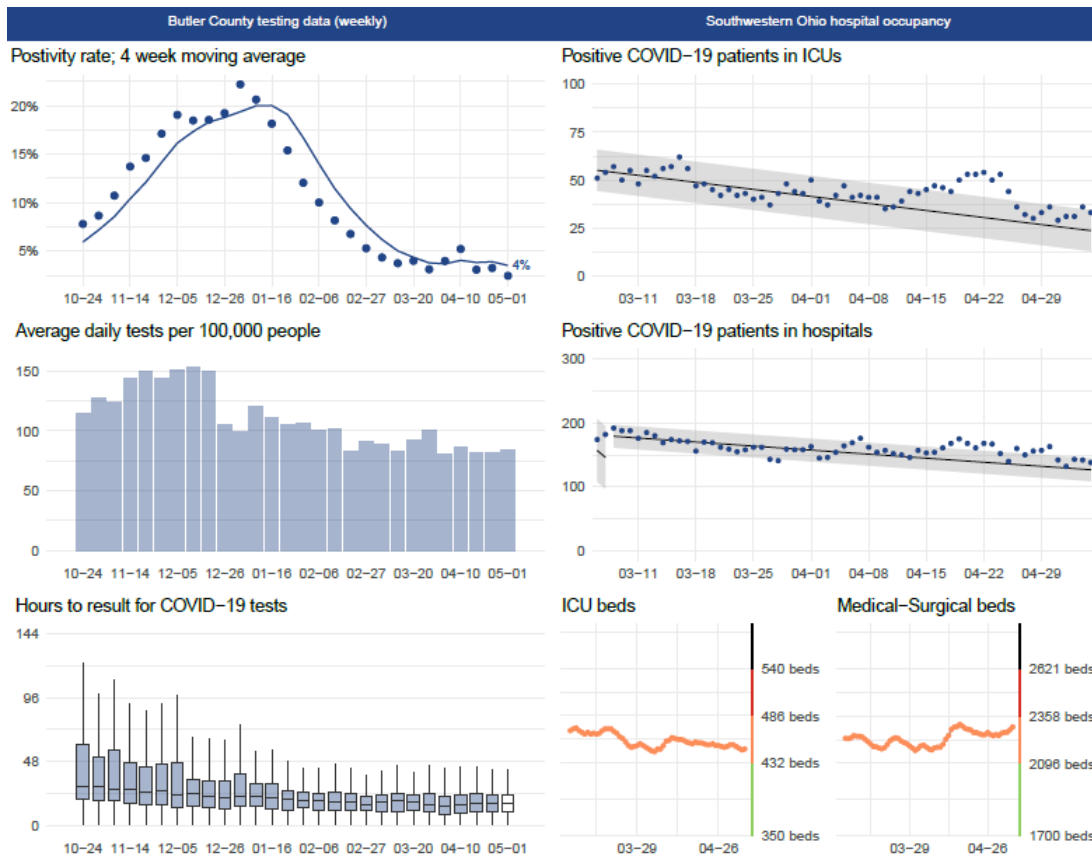
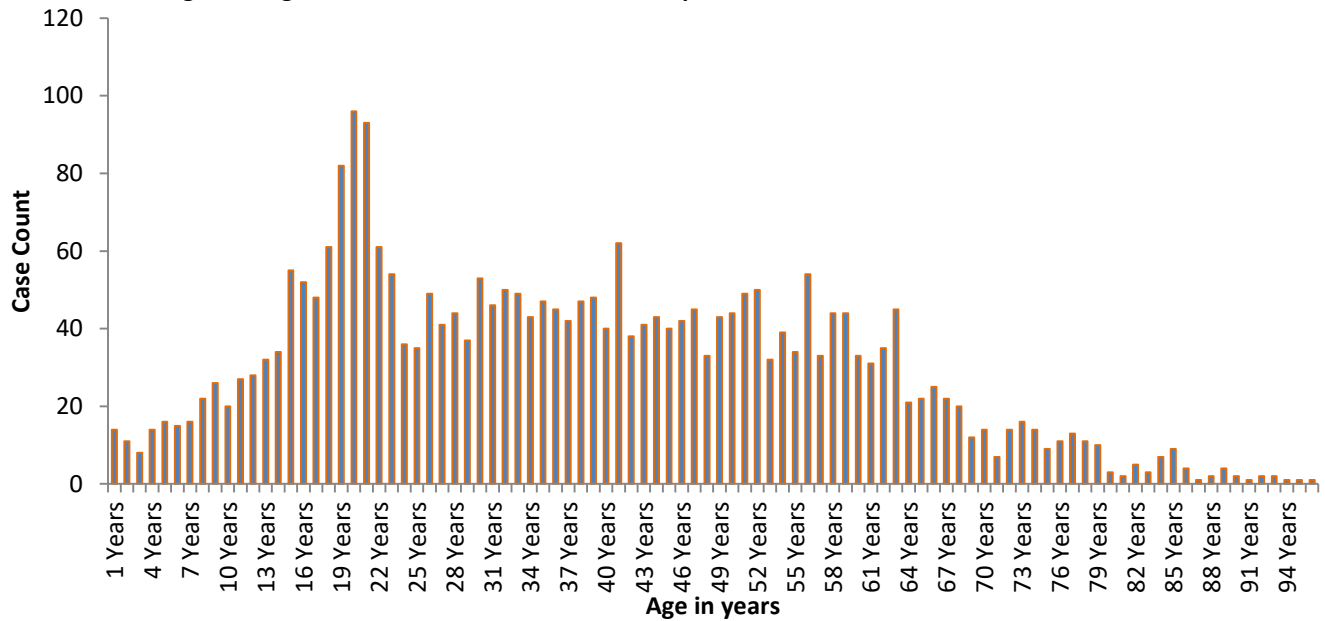


Figure 7. Age distribution of COVID-19 Cases reported Since March 1, 2021



All figures show reported cases of COVID-19 in Butler County as of 1700 EDT 05/12/2021. Due to delays in reporting, the numbers of confirmed and probable cases on all figures are subject to change between reports and confirmed and probable case counts are likely to increase. **This should not be assumed to be the total disease burden of COVID-19 in Butler County only those that have been laboratory confirmed OR meet ODH probable case criteria AND reported to Public Health.

*Data is provisional – only confirmed or probable COVID-19 cases are included in counts. Report reflects time period since the introduction of SARS-CoV-2 into humans, measured in days. Data accessed from the Ohio Disease Reporting System (ODRS) on 05/12/2021 at 1700 EST.

**Deaths are now reconciled to the Ohio Department of Health's available data to avoid discrepancies between the state and local numbers. ODH's protocol has changed to avoid reconciliation errors and now only includes those deaths that have been reconciled with Vital statistics and may not match what has been reported to the CDC which are provisional numbers. This is a lagging indicator and will be multiple weeks behind.

#Data collected from Ohio Impact-SIIS 05/10/2021

Figure 8. Cases by Date of Report Since March 1, 2021

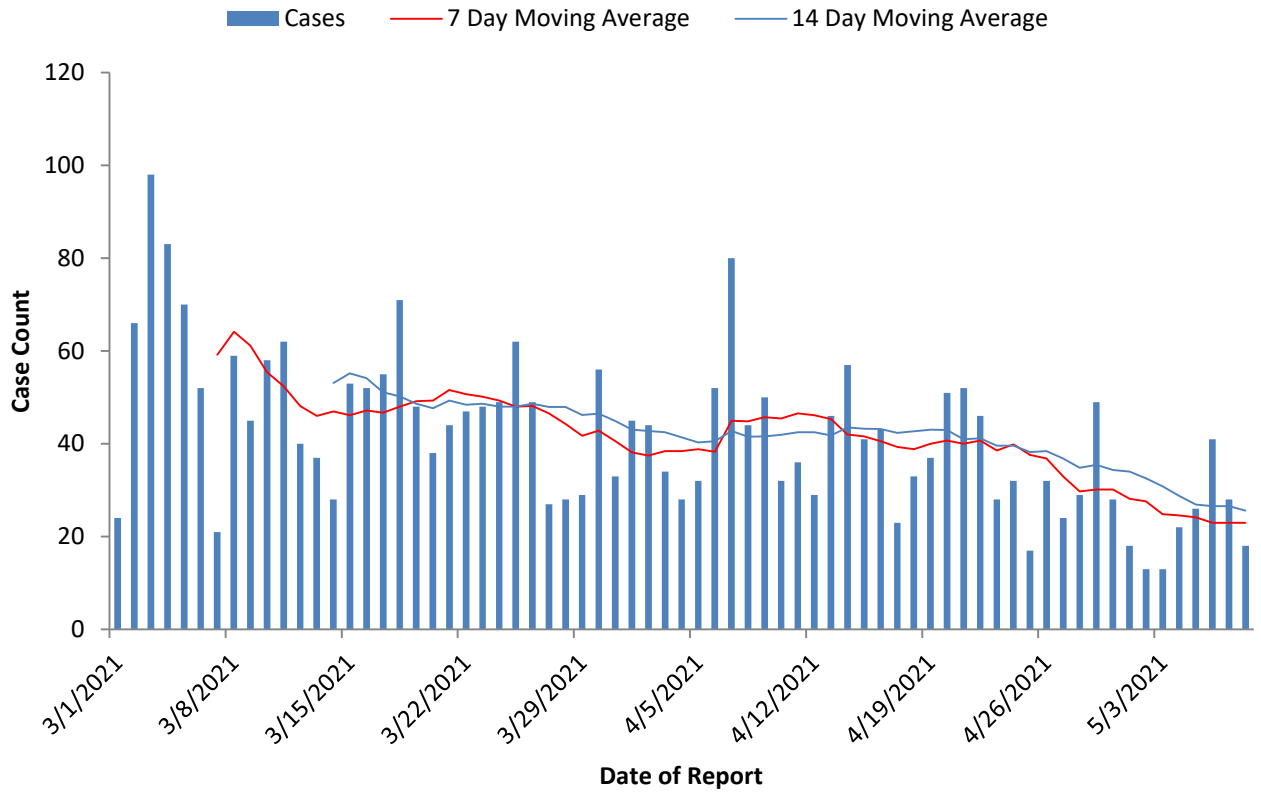
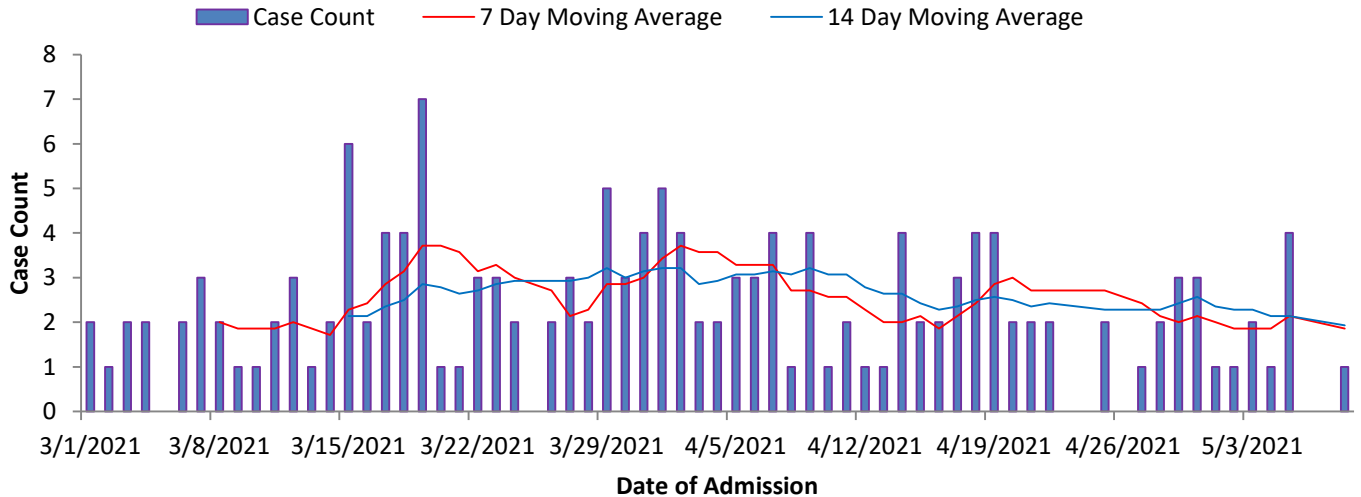


Figure 9. Hospitalizations Since March 1, 2021



Total # of Vaccinations by BCGHD:	34,210
# Vaccinations Started by BCGHD:	21,612
# Vaccinations Completed by BCGHD:	12,598
# Vaccinations Started in Butler County by All Partners:	145,941
# Vaccinations Completed in Butler County by All Partners:	123,341
# Vaccines Started in Ohio:	4,834,135
# Vaccines Completed in Ohio:	4,149,072

All figures show reported cases of COVID-19 in Butler County as of 1700 EDT 05/12/2021. Due to delays in reporting, the numbers of confirmed and probable cases on all figures are subject to change between reports and confirmed and probable case counts are likely to increase. **This should not be assumed to be the total disease burden of COVID-19 in Butler County only those that have been laboratory confirmed OR meet ODH probable case criteria AND reported to Public Health.

*Data is provisional – only confirmed or probable COVID-19 cases are included in counts. Report reflects time period since the introduction of SARS-CoV-2 into humans, measured in days. Data accessed from the Ohio Disease Reporting System (ODRS) on 05/12/2021 at 1700 EST.

**Deaths are now reconciled to the Ohio Department of Health's available data to avoid discrepancies between the state and local numbers. ODH's protocol has changed to avoid reconciliation errors and now only includes those deaths that have been reconciled with Vital statistics and may not match what has been reported to the CDC which are provisional numbers. This is a lagging indicator and will be multiple weeks behind.

#Data collected from Ohio Impact-SIIS 05/10/2021