

Butler County General Health District's 65th COVID-19 Update (4/24/2021)

Confirmed and Probable COVID-19 Cases Reported to Butler County*

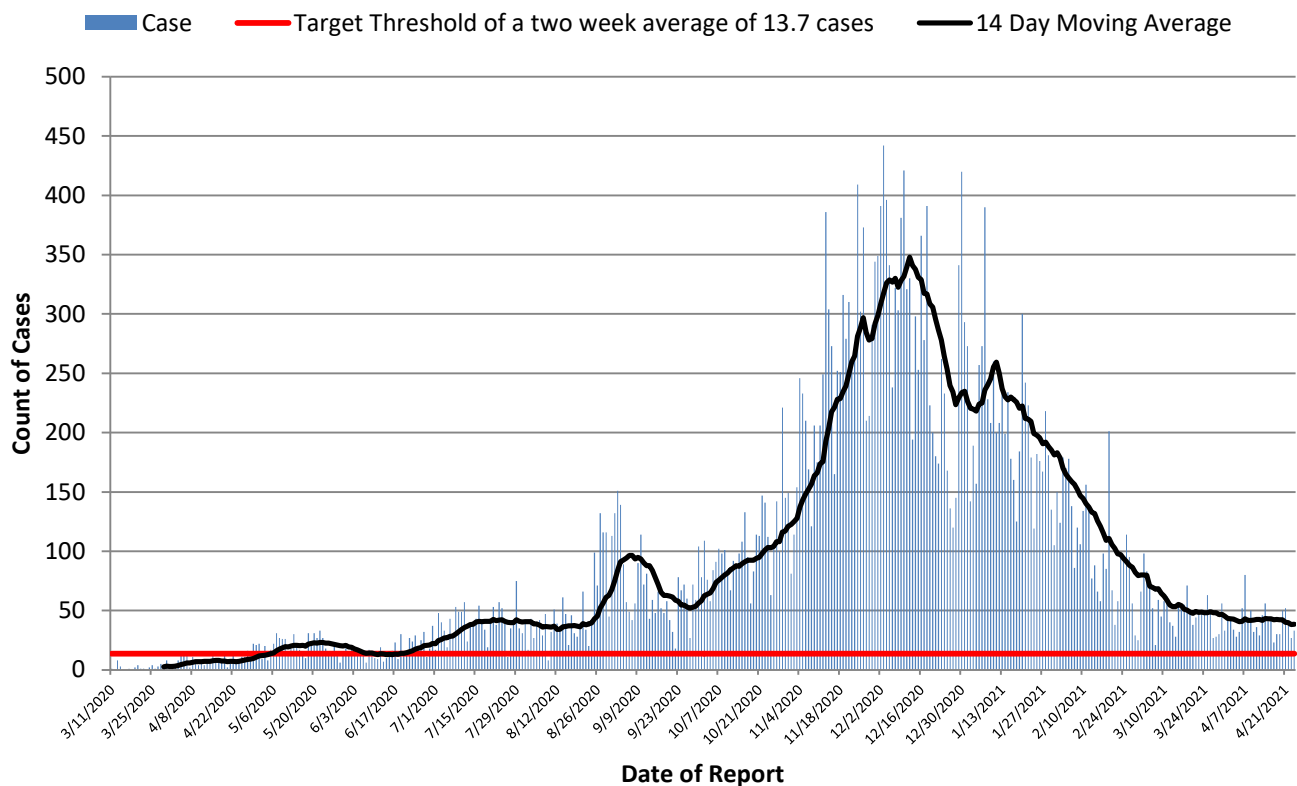
Butler County Residents, 2020

Total # of Cases (04/24):	37,733*
ODH verified Deaths (04/24):	576**
Hospitalizations (04/24):	1,333
ICU admissions (04/24):	120
First Case Reported:	3/11/2020
Last Case Reported (so far):	4/24/2021
Confirmed Cases:	33,944
Probable Cases:	3,789
Age Range:	<1-103
Median Age:	40
Mean Age:	41.0
Incidence (thru 04/24):	9,848.5 per 100,000
Prevalence (thru 04/24):	9.8% of BC population

In the following tables and figures, all threshold values are equivalent.

Table 1: Indicators for Reopening for Butler County		
Indicator	Last 2 Weeks	Governor DeWine's Target
Incidence per 100,000 population	140.2 per 100,000	50 per 100,000
Cumulative Case Count	537 per 14 days	191.6 per 14 days
Daily Average of new cases	38.4 per day through 14 days	13.7 per day through 14 days

Figure 1. Reported Cases of COVID-19 by Date of Report*



All figures show reported cases of COVID-19 in Butler County as of 1700 EDT 04/26/2021. Due to delays in reporting, the numbers of confirmed and probable cases on all figures are subject to change between reports and confirmed and probable case counts are likely to increase. *This should not be assumed to be the total disease burden of COVID-19 in Butler County only those that have been laboratory confirmed OR meet ODH probable case criteria AND reported to Public Health.

**Deaths are now reconciled to the Ohio Department of Health's available data to avoid discrepancies between the state and local numbers. ODH's protocol has changed to avoid reconciliation errors and now only includes those deaths that have been reconciled with Vital statistics and may not match what has been reported to the CDC which are provisional numbers. This is a lagging indicator and will be multiple weeks behind.

#Data collected from Ohio Impact-SIIS 04/26/2021

Figure 2. Cumulative Count of Cases of COVID-19 Reported by day previous two weeks

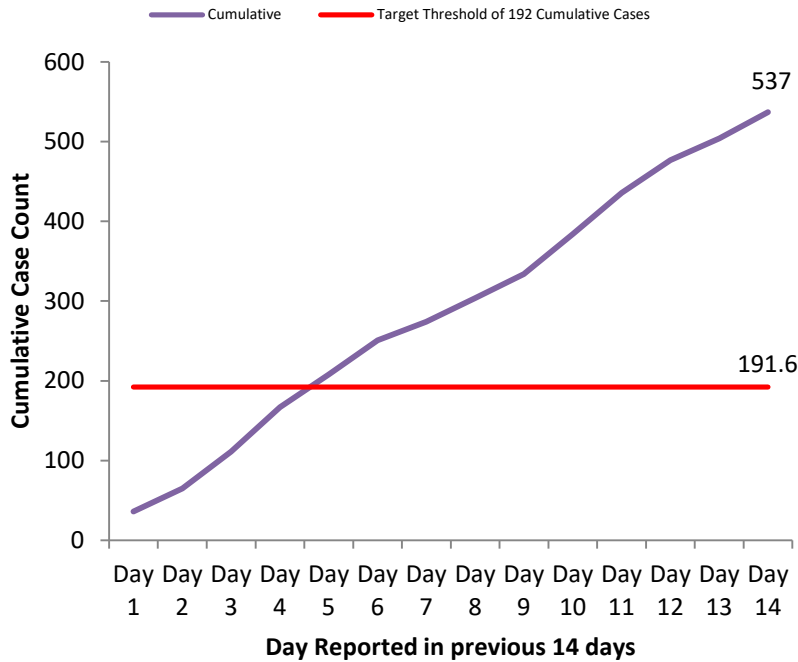


Figure 3. Cases per 100,000 population Reported in 2021

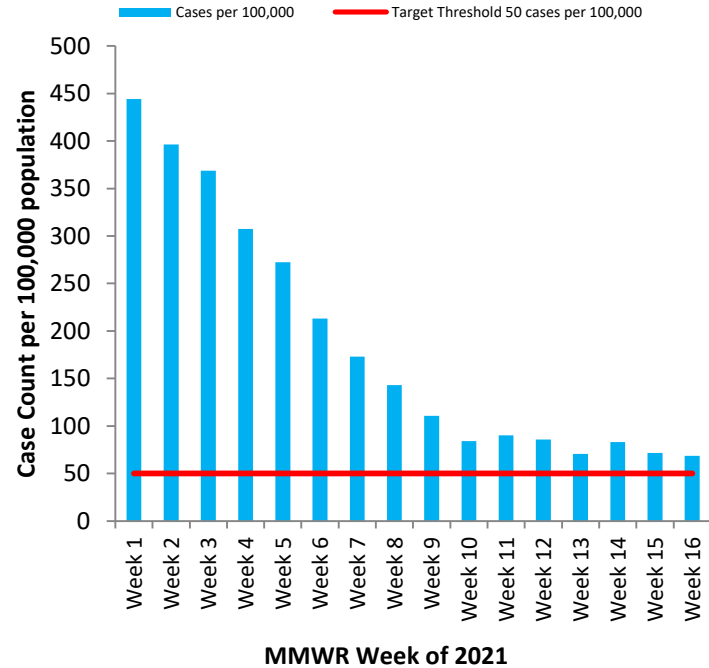


Table 2: Total Reported* Cases by ZIP Code

ZIP Code	Number of Cases	Change from previous week	Incidence per 100,000 thru 04/24	% of Confirmed Cases
45011	6613	↑40 (0.6%) From 6573	9490.9	17.5%
45013	5080	↑23 (0.5%) from 5057	9655.4	13.5%
45044	5015	↑ 34 (0.7%) from 4981	9494.2	13.3%
45069	4926	↑ 45 (0.9%) from 4881	10040.8	13.1%
45014	4806	↑26 (0.5%) from 4780	10943.4	12.7%
45056	3175	↑2 (0.1%) from 3173	11742.7	8.4%
45042	2459	↑ 29 (1.2%) from 2430	9296.4	6.5%
45067	1504	↑20 (1.3%) from 1484	10821.7	4.0%
45050	1162	↑11 (1.0%) from 1151	13593.8	3.1%
45015	1000	↑9 (0.9%) from 991	8307.0	2.7%
45241	583	↑8 (1.4%) from 575		1.5%
45053	313	↑1 (0.3%) from 312	9152.0	0.8%
45064	141	1 (0.7%) from 140		0.4%
45246	57	↑4 (7.5%) from 53		0.2%
45062	56	0 (0%) from 56		0.1%
Cases lacking zip code information or from zip codes with too few cases	843	-	-	2.2%
Butler County (inclusive)	37733	↑249 (0.7%) from 37484	9738.5	100%

Zip-codes not calculated have most of their population outside of Butler County. Rate given for comparison by population and will be higher than the actual amount. Zip-codes with too few cases have been removed for privacy concerns.

Red indicates zip codes where the percentage increase is greater than the increase from the previous week.

All figures show reported cases of COVID-19 in Butler County as of 1700 EDT 04/26/2021. Due to delays in reporting, the numbers of confirmed and probable cases on all figures are subject to change between reports and confirmed and probable case counts are likely to increase. *This should not be assumed to be the total disease burden of COVID-19 in Butler County only those that have been laboratory confirmed OR meet ODH probable case criteria AND reported to Public Health.

*Data is provisional – only confirmed or probable COVID-19 cases are included in counts. Report reflects time period since the introduction of SARS-CoV-2 into humans, measured in days. Data accessed from the Ohio Disease Reporting System (ODRS) on 04/26/2021 at 1700 EST.

**Deaths are now reconciled to the Ohio Department of Health's available data to avoid discrepancies between the state and local numbers. ODH's protocol has changed to avoid reconciliation errors and now only includes those deaths that have been reconciled with Vital statistics and may not match what has been reported to the CDC which are provisional numbers. This is a lagging indicator and will be multiple weeks behind.

#Data collected from Ohio Impact-SIIS 04/26/2021

Table 3. New Reports by MMWR Week, 2020

MMWR Week	End of Week	New Cases Reported	New Hospitalizations	New Confirmed Deaths**
11	3/14	6	1	0
12	3/21	10	3	0
13	3/28	11	6	0
14	4/4	44	18	3
15	4/11	50	16	1
16	4/18	43	10	2
17	4/25	55	19	5
18	5/2	99	16	1
19	5/9	131	18	7
20	5/16	134	17	4
21	5/23	184	26	7
22	5/30	111	12	7
23	6/6	113	16	1
24	6/13	89	10	1
25	6/20	115	13	1
26	6/27	167	19	7
27	7/4	198	10	6
28	7/11	286	18	0
29	7/18	260	26	3
30	7/25	269	12	4
31	8/1	274	9	3
32	8/8	242	17	2
33	8/15	264	14	3
34	8/22	264	14	7
35	8/29	545	24	9
36	9/5	770	14	8
37	9/12	498	18	8
38	9/19	368	17	4
39	9/26	379	14	10
40	10/3	505	10	5
41	10/10	590	16	6
42	10/17	682	28	10
43	10/24	770	25	8
44	10/31	909	42	6
45	11/7	1148	48	18
46	11/14	1540	33	13
47	11/21	1805	41	28
48	11/28	2060	50	30
49	12/05	2306	25	28
50	12/12	2697	44	30
51	12/19	2036	52	36
52	12/26	1429	32	37
53	1/2	1699	46	43
1	1/9	1638	43	25
2	1/16	1591	46	23
3	1/23	1441	32	29
4	1/30	1185	34	20
5	2/6	1070	56	14
6	2/13	837	39	14
7	2/20	684	23	11
8	2/27	558	14	8
9	3/06	431	13	4
10	3/13	323	10	3
11	3/20	345	22	3
12	3/27	329	11	3
13	4/3	271	20	3
14	4/10	317	23	3
15	4/17	287	13	1
16	4/24	271	15	0

All figures show reported cases of COVID-19 in Butler County as of 1700 EDT 04/26/2021. Due to delays in reporting, the numbers of confirmed and probable cases on all figures are subject to change between reports and confirmed and probable case counts are likely to increase. **This should not be assumed to be the total disease burden of COVID-19 in Butler County only those that have been laboratory confirmed OR meet ODH probable case criteria AND reported to Public Health.

*Data is provisional – only confirmed or probable COVID-19 cases are included in counts. Report reflects time period since the introduction of SARS-CoV-2 into humans, measured in days. Data accessed from the Ohio Disease Reporting System (ODRS) on 04/26/2021 at 1700 EST.

**Deaths are now reconciled to the Ohio Department of Health's available data to avoid discrepancies between the state and local numbers. ODH's protocol has changed to avoid reconciliation errors and now only includes those deaths that have been reconciled with Vital statistics and may not match what has been reported to the CDC which are provisional numbers. This is a lagging indicator and will be multiple weeks behind.

#Data collected from Ohio Impact-SIIS 04/26/2021

Figure 4. New Hospitalizations of Butler County Residents by Admission Date, 2020-21*

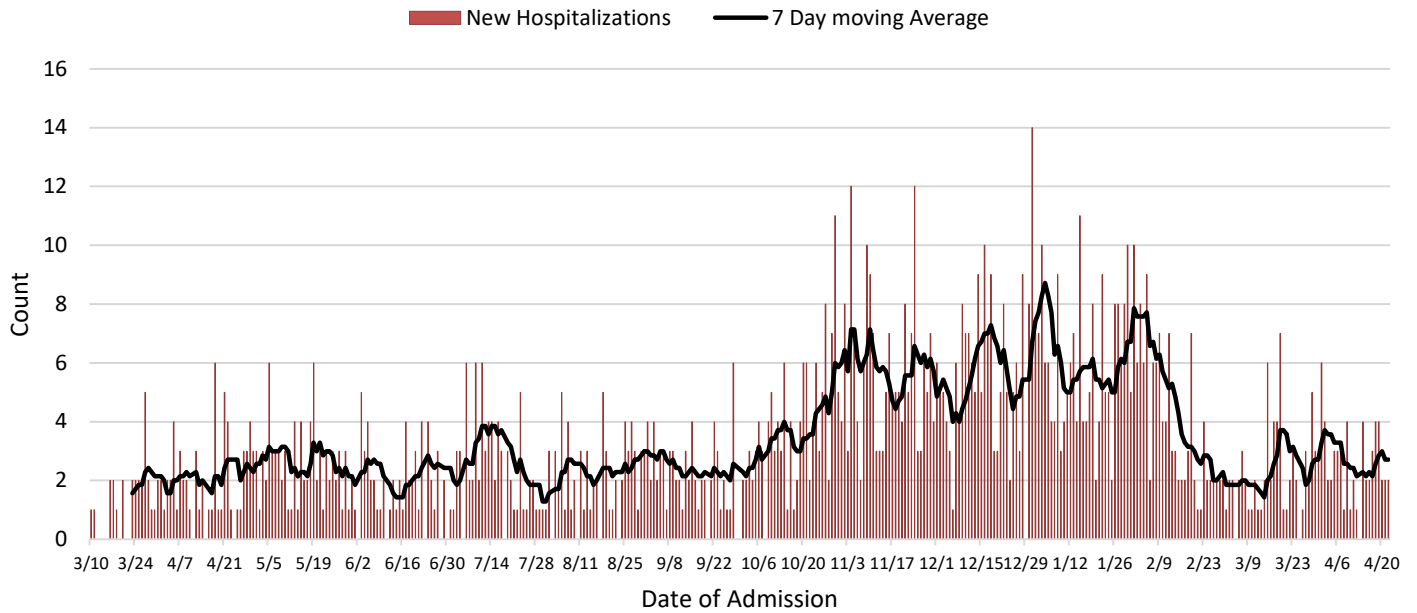
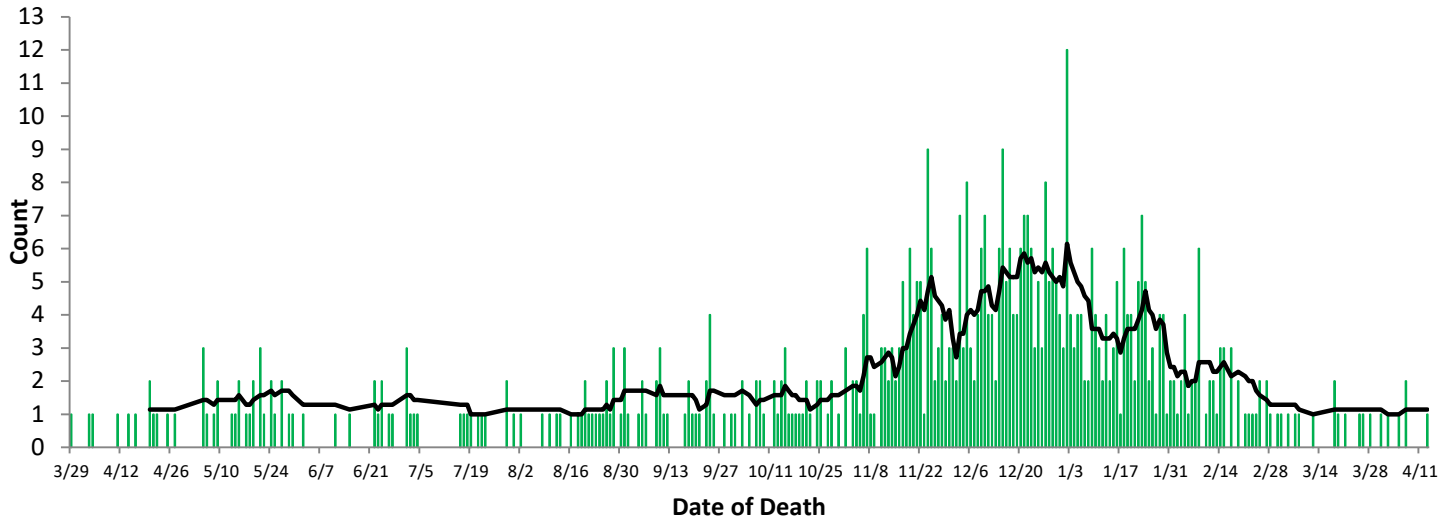


Figure 5. Confirmed COVID-19 Deaths by date of death, 2020-21**



All figures show reported cases of COVID-19 in Butler County as of 1700 EDT 04/26/2021. Due to delays in reporting, the numbers of confirmed and probable cases on all figures are subject to change between reports and confirmed and probable case counts are likely to increase. **This should not be assumed to be the total disease burden of COVID-19 in Butler County only those that have been laboratory confirmed OR meet ODH probable case criteria AND reported to Public Health.

*Data is provisional – only confirmed or probable COVID-19 cases are included in counts. Report reflects time period since the introduction of SARS-CoV-2 into humans, measured in days. Data accessed from the Ohio Disease Reporting System (ODRS) on 04/26/2021 at 1700 EST.

**Deaths are now reconciled to the Ohio Department of Health's available data to avoid discrepancies between the state and local numbers. ODH's protocol has changed to avoid reconciliation errors and now only includes those deaths that have been reconciled with Vital statistics and may not match what has been reported to the CDC which are provisional numbers. This is a lagging indicator and will be multiple weeks behind.

#Data collected from Ohio Impact-SIIS 04/26/2021

Figure 6. Butler County Data analysis performed by Cincinnati Children's Hospital Week of 4/24*

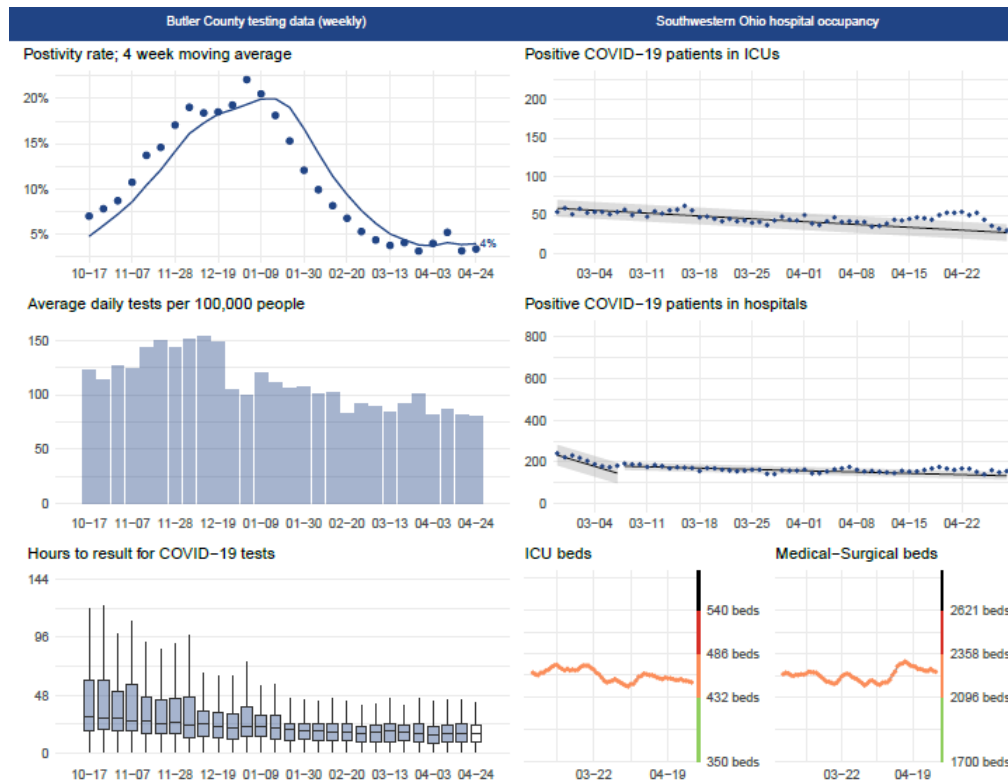
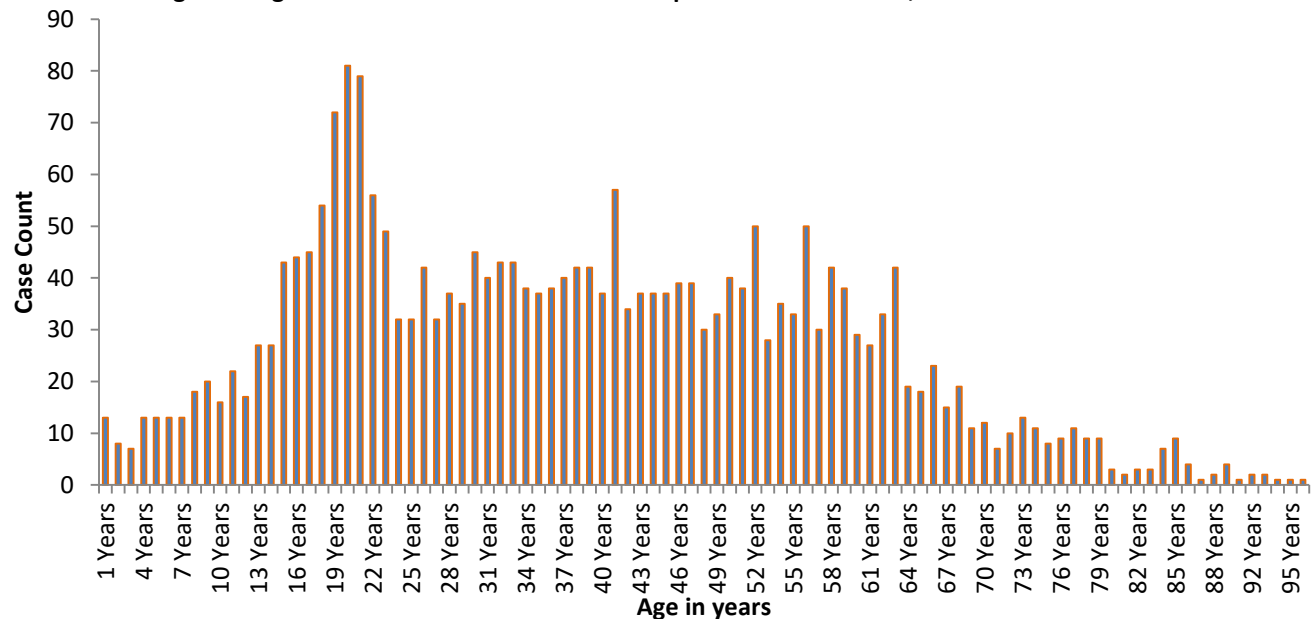


Figure 7. Age distribution of COVID-19 Cases reported Since March 1, 2021



All figures show reported cases of COVID-19 in Butler County as of 1700 EDT 04/26/2021. Due to delays in reporting, the numbers of confirmed and probable cases on all figures are subject to change between reports and confirmed and probable case counts are likely to increase. *This should not be assumed to be the total disease burden of COVID-19 in Butler County only those that have been laboratory confirmed OR meet ODH probable case criteria AND reported to Public Health.

*Data is provisional – only confirmed or probable COVID-19 cases are included in counts. Report reflects time period since the introduction of SARS-CoV-2 into humans, measured in days. Data accessed from the Ohio Disease Reporting System (ODRS) on 04/26/2021 at 1700 EST.

**Deaths are now reconciled to the Ohio Department of Health's available data to avoid discrepancies between the state and local numbers. ODH's protocol has changed to avoid reconciliation errors and now only includes those deaths that have been reconciled with Vital statistics and may not match what has been reported to the CDC which are provisional numbers. This is a lagging indicator and will be multiple weeks behind.

#Data collected from Ohio Impact-SIIS 04/26/2021

Figure 8. Cases by Date of Report Since March 1, 2021

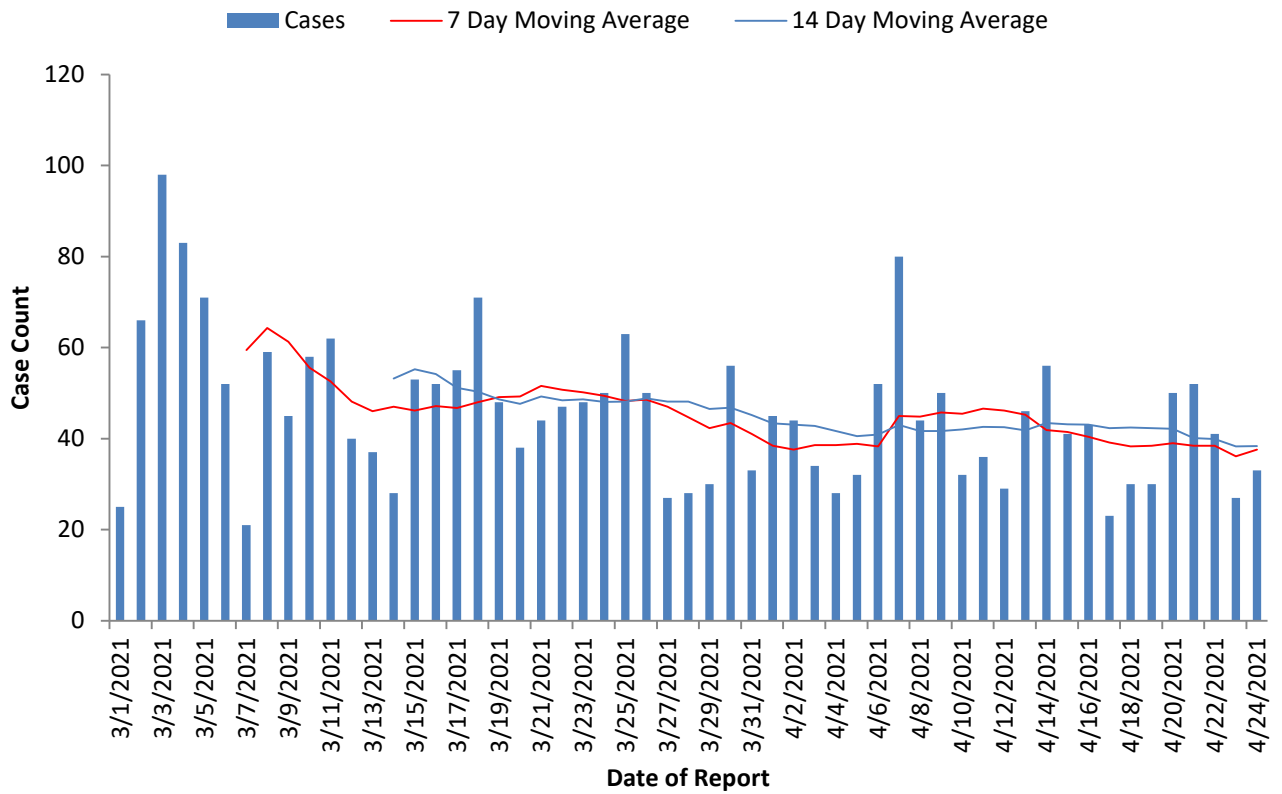
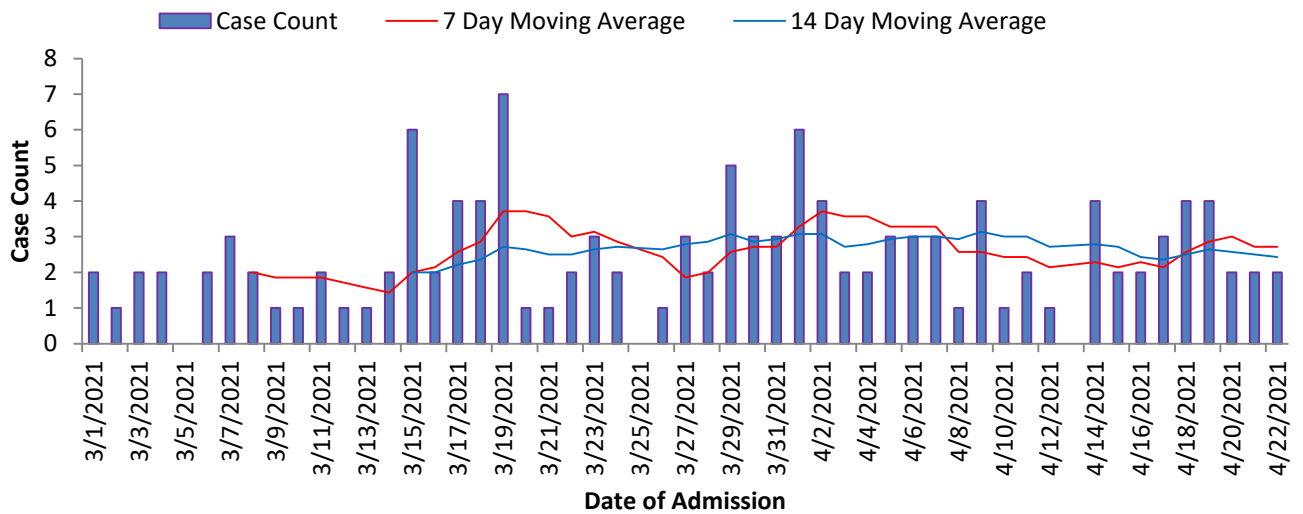


Figure 9. Hospitalizations Since March 1, 2021



Total # of Vaccinations by BCGHD:	29,498
# of Vaccinations Started by BCGHD:	20,304
# of Vaccinations Completed by BCGHD:	9,194
# of Vaccinations Started in Butler County by All Partners:	137,462
# of Vaccinations Completed in Butler County by All Partners:	100,452
# of Vaccines Started in Ohio:	4,581,652
# of Vaccines Completed in Ohio:	3,547,432

All figures show reported cases of COVID-19 in Butler County as of 1700 EDT 04/26/2021. Due to delays in reporting, the numbers of confirmed and probable cases on all figures are subject to change between reports and confirmed and probable case counts are likely to increase. **This should not be assumed to be the total disease burden of COVID-19 in Butler County only those that have been laboratory confirmed OR meet ODH probable case criteria AND reported to Public Health.

*Data is provisional – only confirmed or probable COVID-19 cases are included in counts. Report reflects time period since the introduction of SARS-CoV-2 into humans, measured in days. Data accessed from the Ohio Disease Reporting System (ODRS) on 04/26/2021 at 1700 EST.

**Deaths are now reconciled to the Ohio Department of Health's available data to avoid discrepancies between the state and local numbers. ODH's protocol has changed to avoid reconciliation errors and now only includes those deaths that have been reconciled with Vital statistics and may not match what has been reported to the CDC which are provisional numbers. This is a lagging indicator and will be multiple weeks behind.

#Data collected from Ohio Impact-SIIS 04/26/2021