

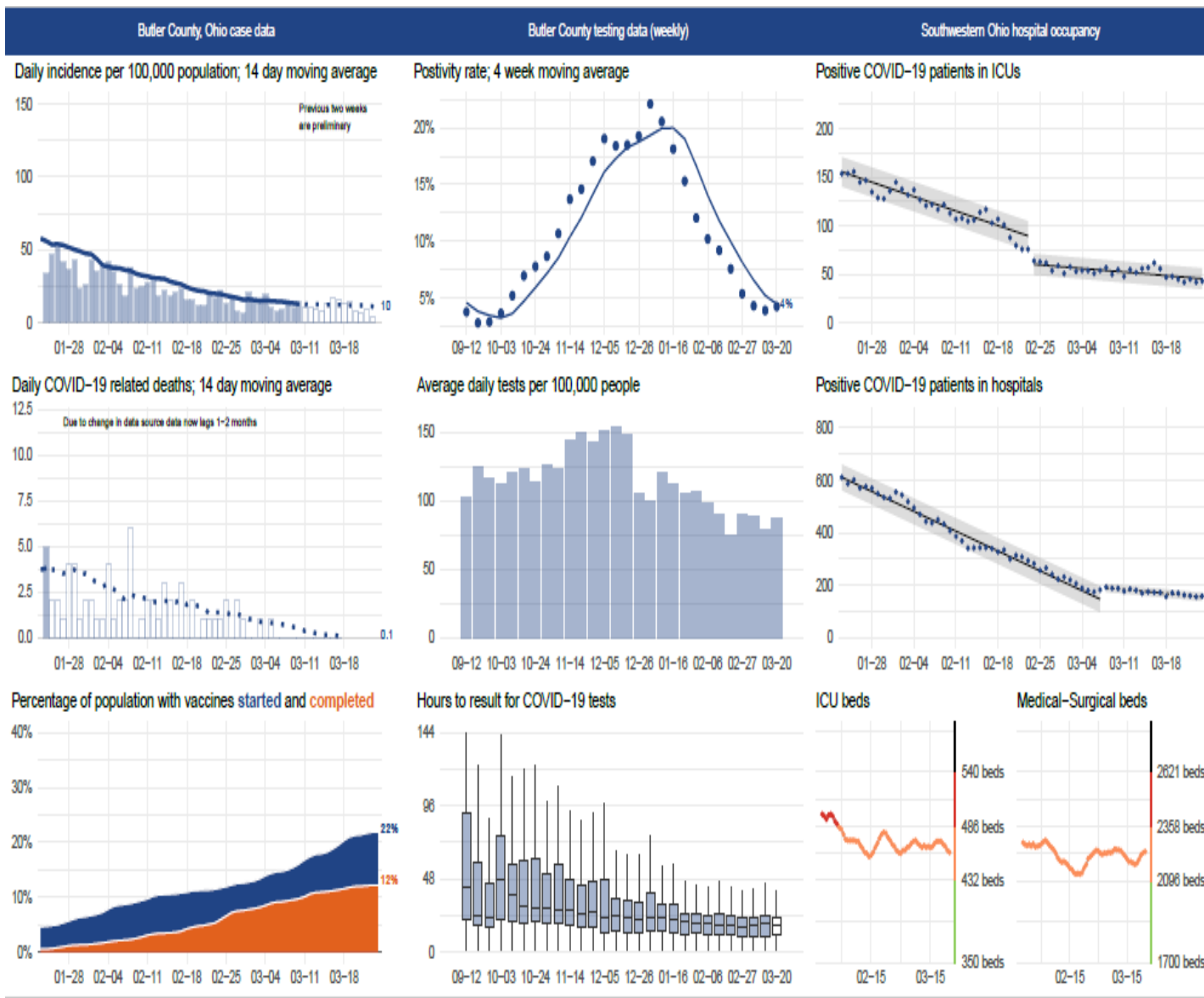








**Figure 6. Butler County Data analysis performed by Cincinnati Children's Hospital**



Number of Vaccinations administered by Butler County General Health District through 03/20/2021: **13,743** #  
 Number of Vaccine Series started by all Partners in Butler County through 03/20/2021: **81,629**  
 Number of Vaccine Series completed by all Partners in Butler County through 03/20/2021: **45,782**

All figures show reported cases of COVID-19 in Butler County as of 1700 EDT 03/20/2021. Due to delays in reporting, the numbers of confirmed and probable cases on all figures are subject to change between reports and confirmed and probable case counts are likely to increase. \*This should not be assumed to be the total disease burden of COVID-19 in Butler County only those that have been laboratory confirmed OR meet ODH probable case criteria AND reported to Public Health.

\*Data is provisional – only confirmed or probable COVID-19 cases are included in counts. Report reflects time period since the introduction of SARS-CoV-2 into humans, measured in days. Data accessed from the Ohio Disease Reporting System (ODRS) on 03/20/2021 at 1700 EST.

\*\*Deaths are now reconciled to the Ohio Department of Health's available data to avoid discrepancies between the state and local numbers. ODH's protocol has changed to avoid reconciliation errors and now only includes those deaths that have been reconciled with Vital statistics and may not match what has been reported to the CDC which are provisional numbers. This is a lagging indicator and will be multiple weeks behind.

#Data collected from Ohio Impact-SIIS 03/16/2021