

## Butler County General Health District COVID-19 Update (08/04/2020) Confirmed and Probable COVID-19 Cases Reported to Butler County\* Butler County Residents, 2020

<b>Total # of Cases:</b>	2804*
<b>Confirmed Deaths (08/04):</b>	59
<b>First Case Reported:</b>	3/11/2020
<b>Last Case Reported (so far):</b>	8/04/2020
<b>Confirmed Cases:</b>	2765
<b>Probable Cases:</b>	39
<b>Age Range:</b>	<1-101
<b>Median Age:</b>	41
<b>Mean Age:</b>	42.4
<b>Incidence Rate:</b>	733.3 per 100,000

Figure 1: Cases Reported to Butler County by Symptom Onset Date\*, 2020  
(Confirmed and Probable)

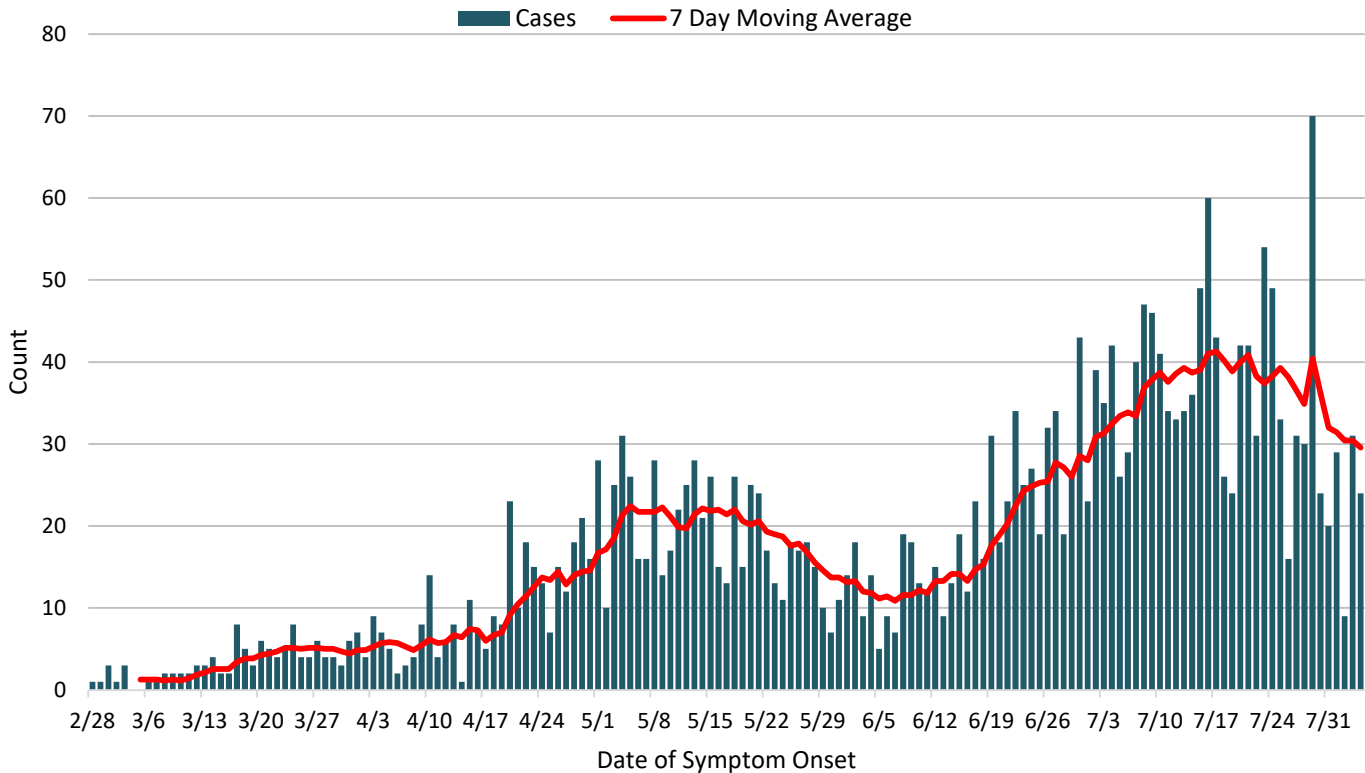


Figure 1 shows the daily incidence (new cases) by date of symptom onset. Figure 2 shows the cumulative (total ongoing) case count. With one exception on 07/29 the 7-day moving average has been on a downward trend. This coincides with the time in which the public health interventions such as mandatory mask wearing has been implemented in Butler County. NOTE: Each case reported represents a unique individual that meets case definition. Duplicate tests are removed as are tests that are performed to verify infection status. **Each person is only counted once regardless of how many tests they take.** All confirmed cases are confirmed via PCR test. Serology (antibody or antigen tests) are considered probable cases and only if they also show symptoms or have an exposure to a confirmed case. **Persons getting antibody tests to check immunity status only are NOT included in the totals of cases or deaths.**

All figures show reported cases of COVID-19 in Butler County as of 1700 EDT 08/04/2020. Due to delays in reporting, the numbers of confirmed and probable cases on Figure 1 are subject to change between reports and confirmed and probable case counts are likely to increase. \*This should not be assumed to be the total disease burden of COVID-19 in Butler County only those that have been laboratory confirmed OR meet ODH probable case criteria AND reported to Public Health.

\*Data is provisional – only confirmed or probable COVID-19 cases are included in counts. Report reflects time period since the introduction of SARS-CoV-2 into humans, measured in days. Data accessed from the Ohio Disease Reporting System (ODRS) on 08/04/2020 at 1700 EDT.

Figure 2. Cumulative Cases Reported to Butler County by Date Reported\*, 2020  
(Confirmed and Probable)

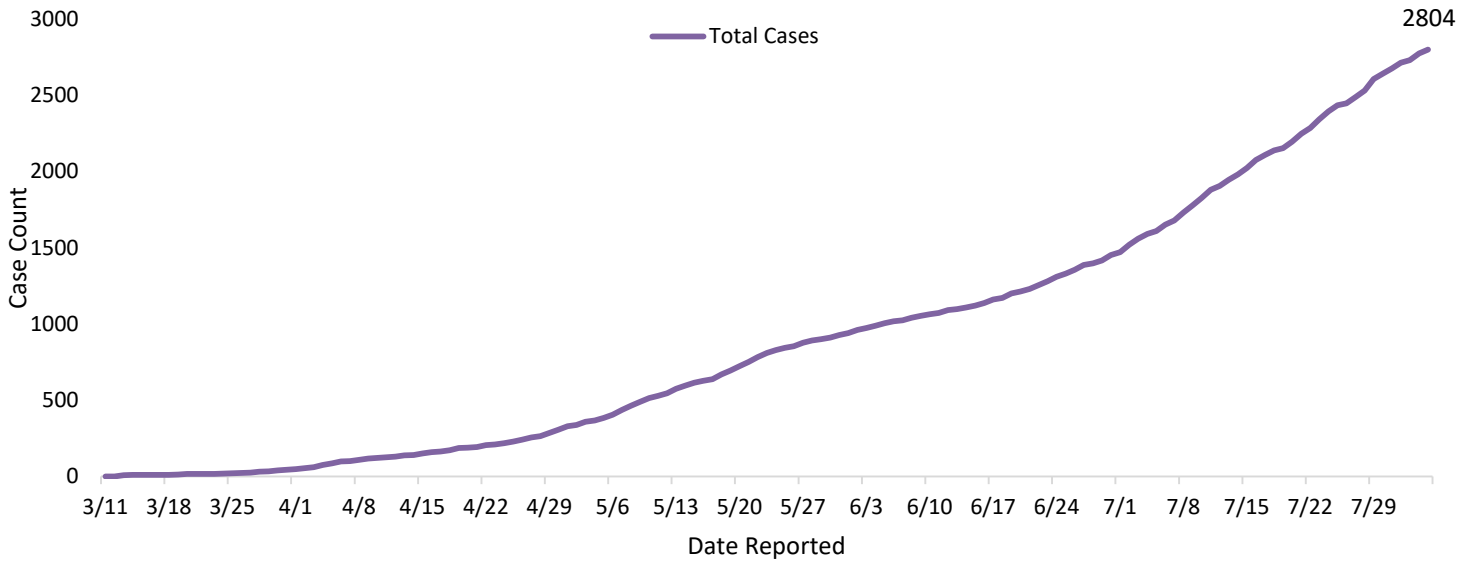
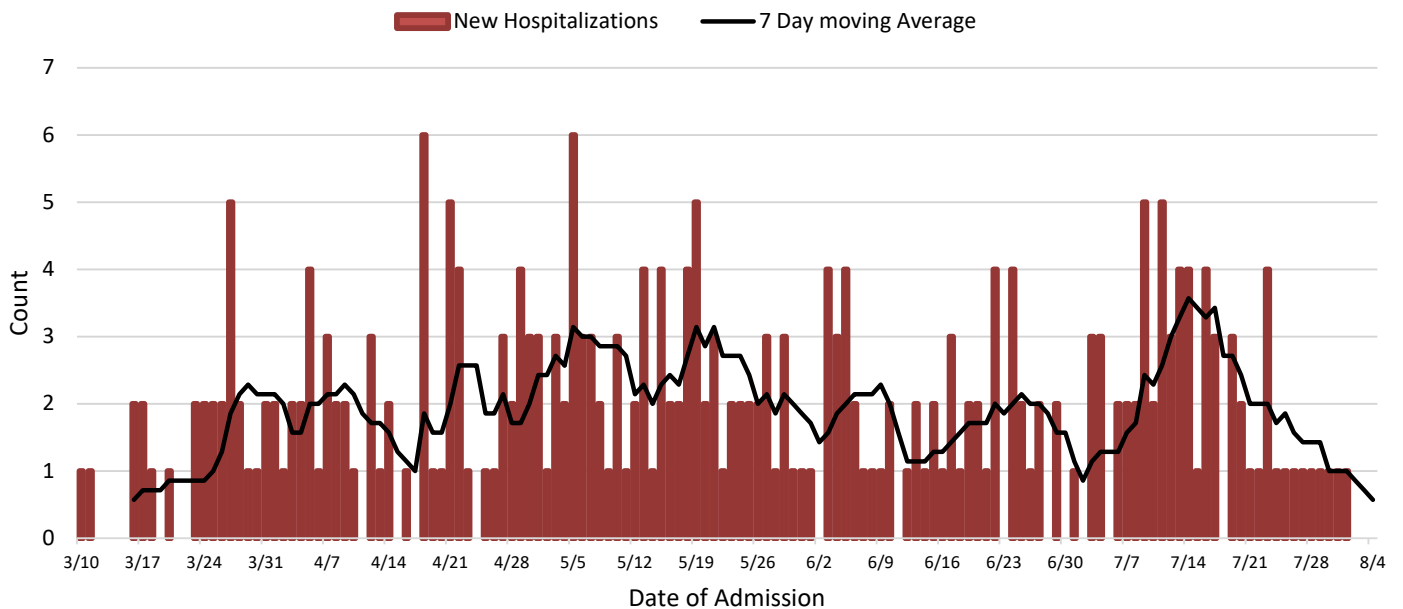


Figure 3. New Hospitalizations of Butler County Residents by Admission Date, 2020\*

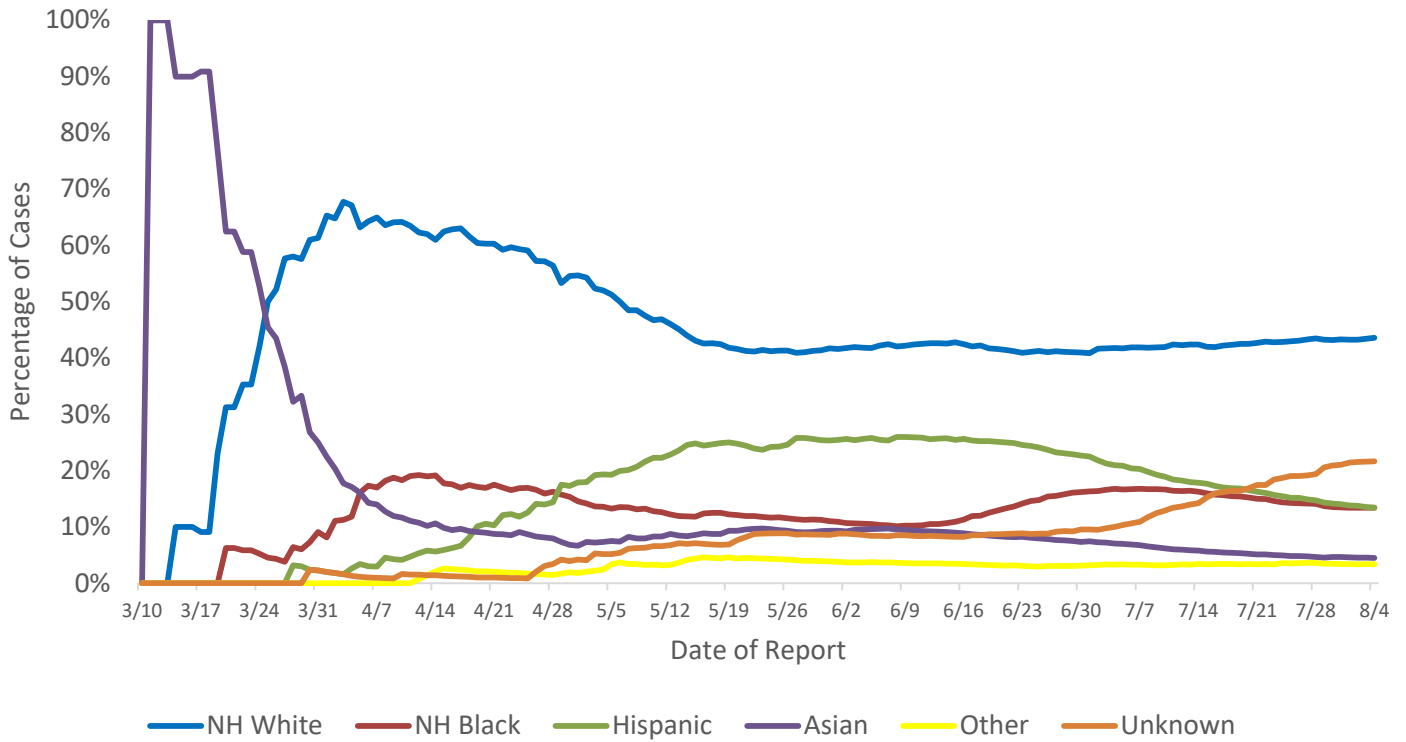


Hospitalizations have seen an encouraging trend over the past reporting periods as they continue to go down. This mirrors the decrease that we have been seeing in total cases overall. **Due to delays in reporting, and the time it takes for illness to become severe enough to require hospitalization, it is too early to tell whether this trend will continue.** Figure 8 also shows an increase in low-risk cases being reported. **This is not a hospitalization bed/ICU usage analysis.** These are only Butler County residents in hospitals which may be outside of Butler County, and do not include the residents of other counties hospitalized in Butler County. There are 17 admissions for which the date of admission is not available.

All figures show reported cases of COVID-19 in Butler County as of 1700 EDT 08/04/2020. Due to delays in reporting, the numbers of confirmed and probable cases on Figure 1 are subject to change between reports and confirmed and probable case counts are likely to increase. \*This should not be assumed to be the total disease burden of COVID-19 in Butler County only those that have been laboratory confirmed OR meet ODH probable case criteria AND reported to Public Health.

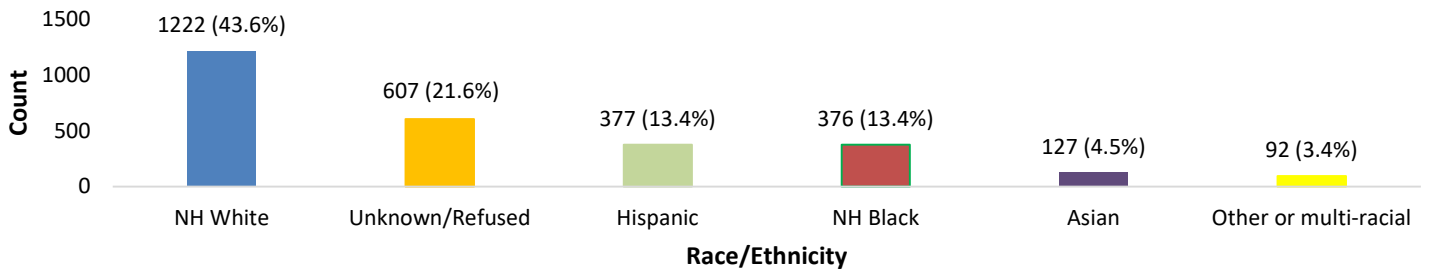
\*Data is provisional – only confirmed or probable COVID-19 cases are included in counts. Report reflects time period since the introduction of SARS-CoV-2 into humans, measured in days. Data accessed from the Ohio Disease Reporting System (ODRS) on 08/04/2020 at 1700 EDT.

Figure 4. Race and Ethnicity as a Percentage of Cases Reported by Date of Report\*, 2020



Figures 4 and 5 relate to race and ethnicity in COVID-19 cases. While Asian cases represented the vast majority of cases at the start of the outbreak, none of these cases were imported from China and were likely introduced from domestic interstate travel. Since that time, the portion of Asians has continued to decrease. Non-Hispanic (NH) White cases made up the majority of cases until May. For another week NH White cases continued to decrease as a percentage of cases reported. The Hispanic population has been the hardest hit with the percentage of Hispanic cases far exceeding the percentage of the population that they make up. The Hispanic population makes up approximately 5% of Butler County, yet represents 13.4% of cases. Many of these cases have been linked to workplaces and secondary spread in housing. The share of Hispanic cases has been dropping since early June. The Non-Hispanic Black population of Butler County makes up another area of concern. In Butler County, the NH Black population makes up around 9% of population, but account for 13.4% of COVID cases. The greatest increase has been seen in cases refusing interview are increasing and no racial or ethnic statistics can be attained if not reported resulting in an increase of “unknown/refused” cases.

Figure 5. Cases Reported to Butler County by Race/Ethnicity\*, 2020



All figures show reported cases of COVID-19 in Butler County as of 1700 EDT 08/04/2020. Due to delays in reporting, the numbers of confirmed and probable cases on Figure 1 are subject to change between reports and confirmed and probable case counts are likely to increase. \*This should not be assumed to be the total disease burden of COVID-19 in Butler County only those that have been laboratory confirmed OR meet ODH probable case criteria AND reported to Public Health.

\*Data is provisional – only confirmed or probable COVID-19 cases are included in counts. Report reflects time period since the introduction of SARS-CoV-2 into humans, measured in days. Data accessed from the Ohio Disease Reporting System (ODRS) on 08/04/2020 at 1700 EDT.

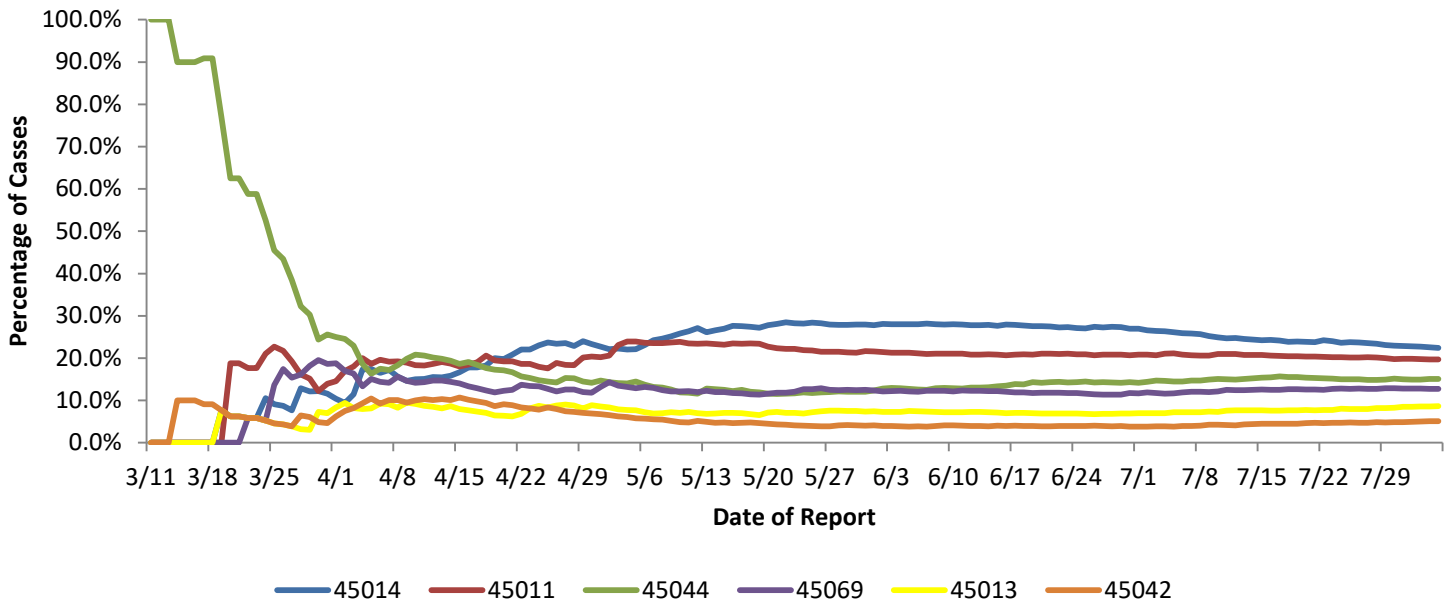
# Demographics of COVID-19 Cases Reported to Butler County\*

Butler County Residents, 2020  
(as of 1700 EDT 08/04/2020)

Table 1: Total Reported* Cases by ZIP Code			
ZIP Code	Number of Cases	Rate per 100,000	% of Confirmed Cases
45014	591	1345.7	21.1%
45011	520	746.3	18.6%
45044	398	753.5	14.2%
45069	336	684.9	12.0%
45013	229	435.3	8.2%
45042	134	506.6	4.8%
45015	101	839.0	3.6%
45056	92	340.3	3.3%
45067	82	590.0	2.9%
45050	69	807.2	2.5%
45241	38	-	0.7%
45246	20	-	0.7%
45005	18	-	0.6%
45053	10	292.4	0.4%
Cases lacking zip code information or from zip codes with <5 cases	166	-	5.9%
<b>Butler County (inclusive)</b>	<b>2638</b>		<b>100%</b>

Zip-codes not calculated have most of their population outside of Butler County. Rate given for comparison by population and will be higher than the actual amount. Zip-codes with fewer than 5 cases have been removed for privacy concerns.

Figure 6. Six most reported Zip-codes as a Percentage of Cases Reported by Date of Report\*, 2020

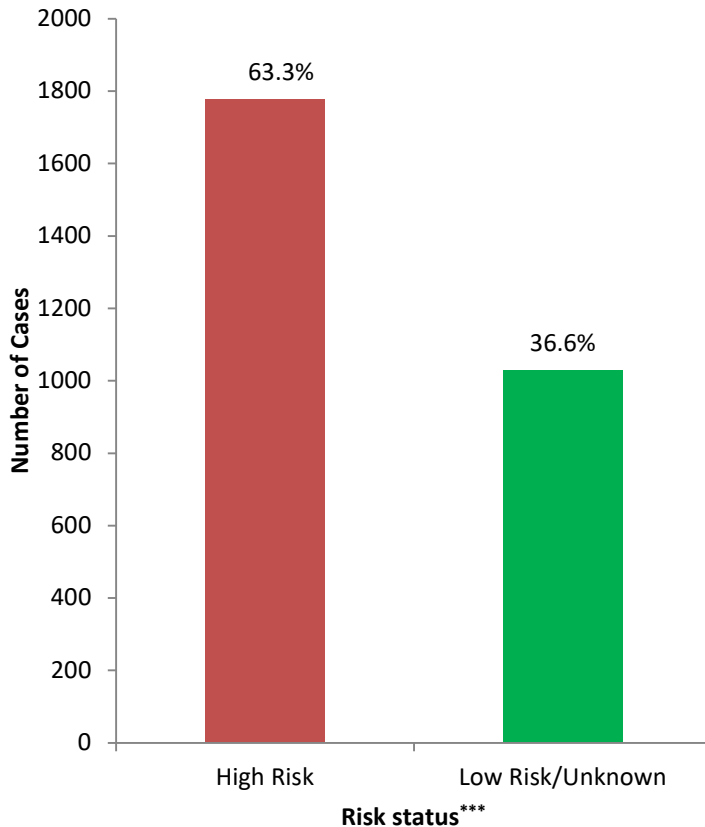


All figures show reported cases of COVID-19 in Butler County as of 1700 EDT 08/04/2020. Due to delays in reporting, the numbers of confirmed and probable cases on Figure 1 are subject to change between reports and confirmed and probable case counts are likely to increase. \*This should not be assumed to be the total disease burden of COVID-19 in Butler County only those that have been laboratory confirmed OR meet ODH probable case criteria AND reported to Public Health.

\*Data is provisional – only confirmed or probable COVID-19 cases are included in counts. Report reflects time period since the introduction of SARS-CoV-2 into humans, measured in days. Data accessed from the Ohio Disease Reporting System (ODRS) on 08/04/2020 at 1700 EDT.

**Figure 7. Reported Confirmed Cases by Risk\***

Butler County Residents, 2020

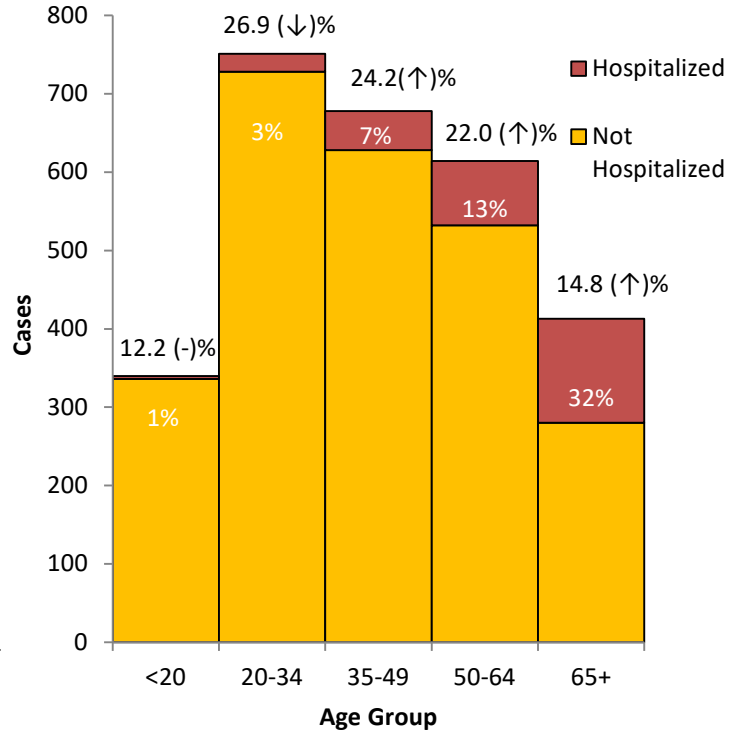


(Underlying Health Conditions or Older than 65)

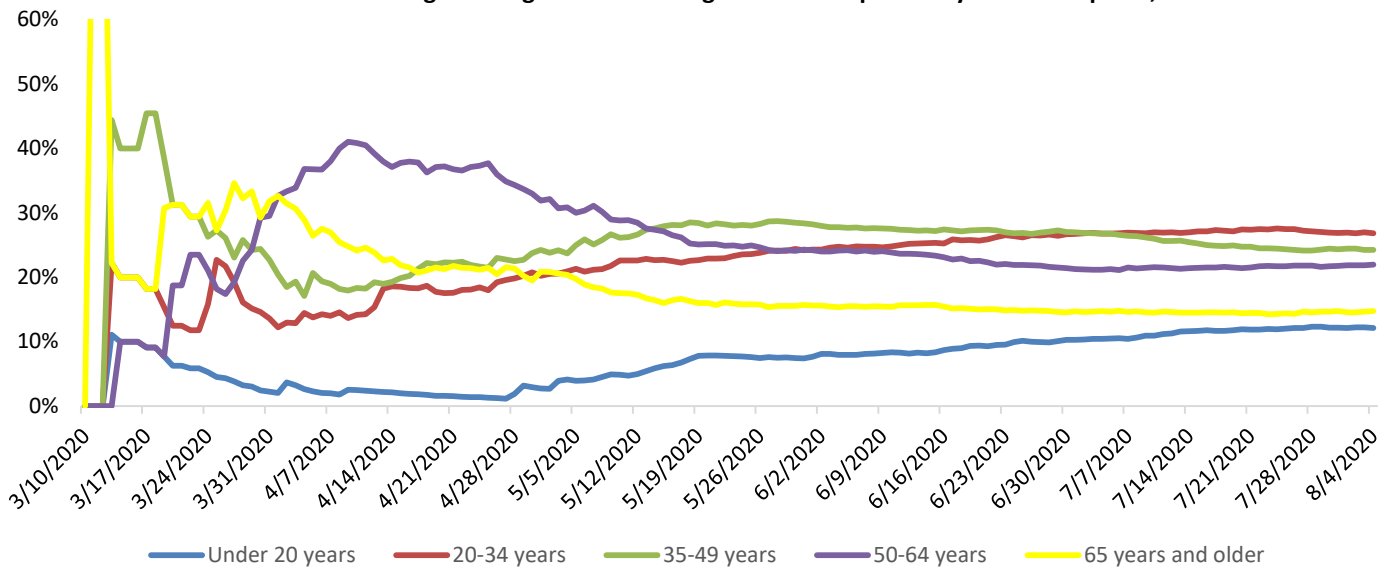
\*\*\*High risk status does not necessarily make one more susceptible to transmission, but does increase the likelihood of a more severe illness

**Figure 8. Reported Confirmed Cases by Age Group\***

Butler County Residents, 2020



**Figure 9. Age as a Percentage of Cases Reported by Date of Report\*, 2020**



All figures show reported cases of COVID-19 in Butler County as of 1700 EDT 08/04/2020. Due to delays in reporting, the numbers of confirmed and probable cases on Figure 1 are subject to change between reports and confirmed and probable case counts are likely to increase. \*This should not be assumed to be the total disease burden of COVID-19 in Butler County only those that have been laboratory confirmed OR meet ODH probable case criteria AND reported to Public Health.

\*Data is provisional – only confirmed or probable COVID-19 cases are included in counts. Report reflects time period since the introduction of SARS-CoV-2 into humans, measured in days. Data accessed from the Ohio Disease Reporting System (ODRS) on 08/04/2020 at 1700 EDT.

# Clinical Statistics for Reported Butler County Cases

Butler County Residents, 2020  
(as of 1700 EDT 08/04/2020)

Table 3. Hospitalization Statistics (03/11/2020- 08/04/2020)			
	N	Percentage of Hospitalized Cases	Percentage of all cases
Total Hospitalized	293	100%	10.4%
Cases with information	275	93.8%	9.8%
Admitted to Intensive Care Unit (ICU)	37	12.6%	1.3%
Required intubation	24	8.2%	0.9%
Range of Length of Stay (in days)	<1-44	-	-
Median Length of Stay (in days)	5	-	-

There has been a steady increase in cases that require intensive care, but the number of days in the hospital has decreased, and overall number of hospitalizations is down to 11.8% which is within range of the national data.

Table 4. New Reports by MMWR Week, 2020						
MMWR Week	End of Week	New Cases Reported (by date of report)	New Hospitalizations (by date of report)	New ICU Admissions (by date of report)	New Confirmed Deaths (By date of death)	
11	3/14	10	1	1	0	
12	3/21	6	3	0	0	
13	3/28	15	7	5	0	
14	4/4	45	16	6	2	
15	4/11	51	19	3	1	
16	4/18	45	9	0	1	
17	4/25	58	21	2	2	
18	5/2	109	17	2	2	
19	5/9	151	19	0	8	
20	5/16	139	16	0	4	
21	5/23	183	24	1	8	
22	5/30	101	12	1	6	
23	6/6	107	14	4	2	
24	6/13	80	11	1	2	
25	6/20	115	14	0	0	
26	6/27	174	18	2	8	
27	7/4	205	9	0	5	
28	7/11	289	21	2	0	
29	7/18	258	19	4	1	
30	7/25	296	13	2	3	
31	8/1	279	9	1	3	
32	8/8	88	1	0	1	

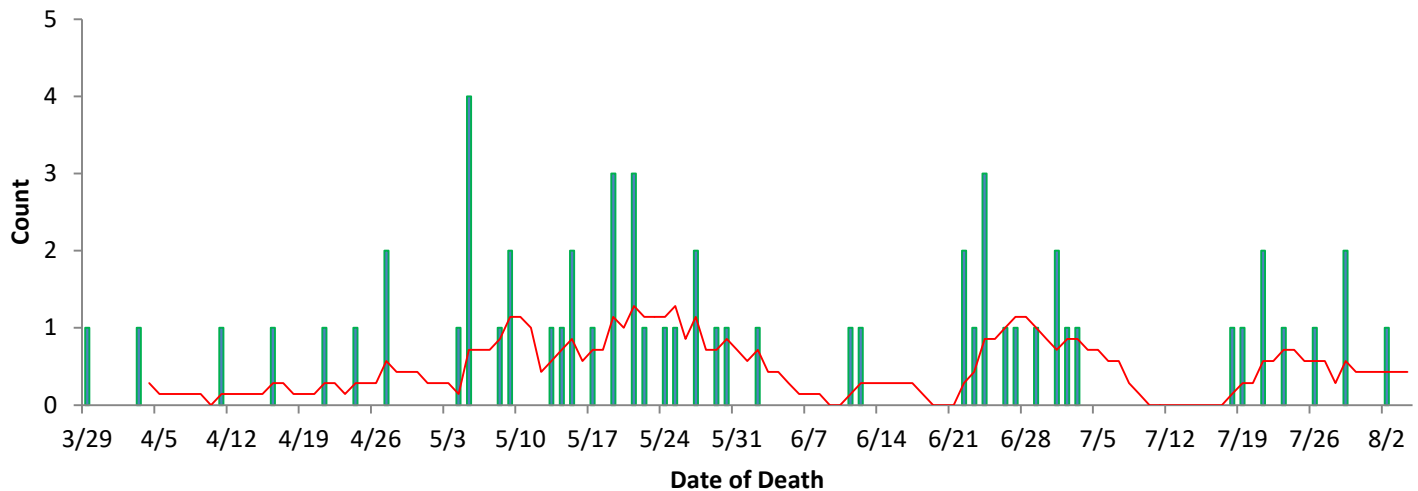
All figures show reported cases of COVID-19 in Butler County as of 1700 EDT 08/04/2020. Due to delays in reporting, the numbers of confirmed and probable cases on Figure 1 are subject to change between reports and confirmed and probable case counts are likely to increase. \*This should not be assumed to be the total disease burden of COVID-19 in Butler County only those that have been laboratory confirmed OR meet ODH probable case criteria AND reported to Public Health.

\*Data is provisional – only confirmed or probable COVID-19 cases are included in counts. Report reflects time period since the introduction of SARS-CoV-2 into humans, measured in days. Data accessed from the Ohio Disease Reporting System (ODRS) on 08/04/2020 at 1700 EDT.

Table 2. Death Statistics, 2020		
	N	%
Confirmed Deaths	59	2.1%
Age		
Range	30-101	
Median	75	
Mean	73.7	
Race		
NH White	44	72.2%
NH Black	11	20.4%
Asian	3	5.5%
Hispanic	1	1.9%
High Risk**		
High Risk**	58	98.3%
Resides in Long-Term Care	31	52.5%

\*\*Individuals who are high risk are those with underlying health conditions that could exacerbate a SARS-CoV-2 infection including those who are immunocompromised or immunosuppressed or individuals who are older than 65 years of age. High risk status does not imply higher likelihood of disease transmission, but a higher likelihood of a severe illness.

Figure 11. Confirmed COVID-19 Deaths by date of death, 2020\*



The deaths in Butler County have almost entirely been high risk individuals, either by age or by pre-existing health conditions that would lead to a more severe outcome. Like the trend in hospitalizations and incidence there was a peak in early to mid-May and a slow decrease after that. As is the case with the other numbers, most newly reported deaths are delayed reports from previous weeks back, and is therefore difficult to tell the accuracy or longevity of the trend. Case definition regarding deaths is complicated and may take many weeks to make a final decision regarding cause of death as well as reconciling jurisdiction. Therefore, there may be inconsistencies in reporting between ODH and the three Butler County jurisdictions. For this reason we only include those deaths that have been confirmed and reviewed in our count while the state also includes probable deaths. **Deaths are included in this count only if COVID-19 is listed as immediate or directly underlying cause of death on the death certificate.**

All figures show reported cases of COVID-19 in Butler County as of 1700 EDT 08/04/2020. Due to delays in reporting, the numbers of confirmed and probable cases on Figure 1 are subject to change between reports and confirmed and probable case counts are likely to increase. \*This should not be assumed to be the total disease burden of COVID-19 in Butler County only those that have been laboratory confirmed OR meet ODH probable case criteria AND reported to Public Health.

\*Data is provisional – only confirmed or probable COVID-19 cases are included in counts. Report reflects time period since the introduction of SARS-CoV-2 into humans, measured in days. Data accessed from the Ohio Disease Reporting System (ODRS) on 08/04/2020 at 1700 EDT.