

Butler County General Health District's 133rd COVID-19 Update (09/10/2022)

Confirmed and Probable COVID-19 Cases Reported to Butler County* Butler County Residents, 2020-22

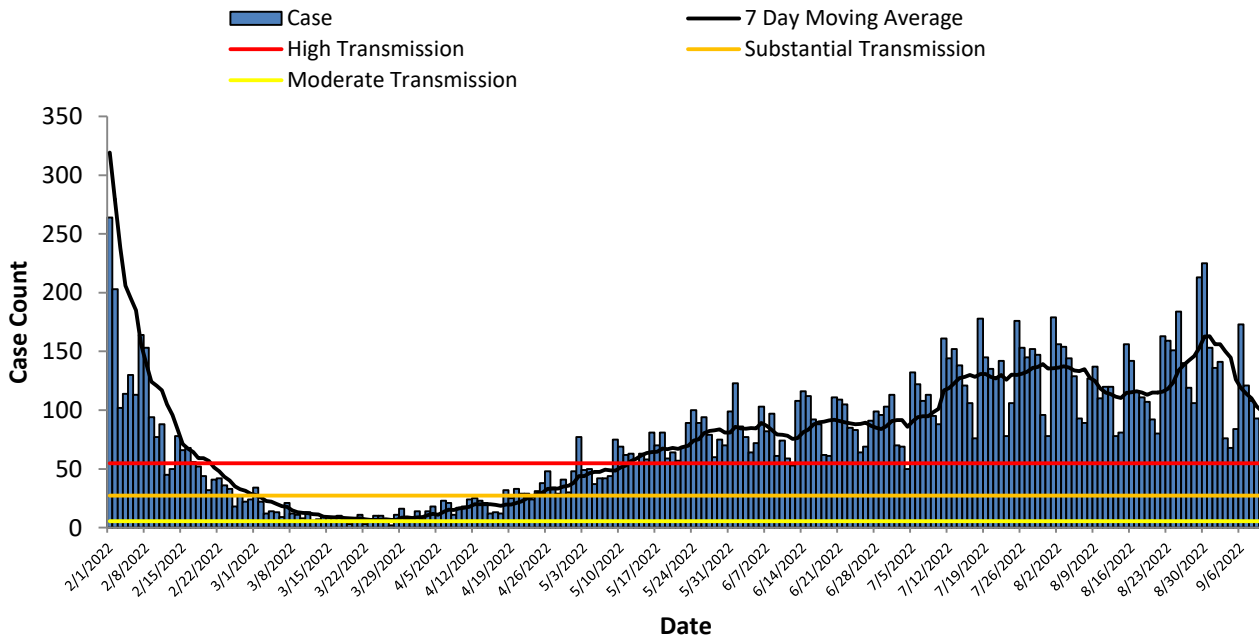
Total # of Cases (09/10):	108,146*
ODH verified Deaths (09/10):	1,185**
Hospitalizations (09/10):	3,571
First Case Reported:	3/11/2020
Last Case Reported (so far):	09/10/2022
Confirmed Cases:	79,102
Probable Cases:	29,044
Age Range:	<1-103
Median Age:	37
Mean Age:	38.3
Incidence (thru 09/10):	27,704.4 per 100,000
Prevalence (thru 09/10):	27.7% of BC population
7-Day Positivity Rate (09/16):	16[#]% of tests performed in BC

Table 1: CDC Indicators		
Indicator	Butler County New Cases over 7 days	Status Level
Community Level	-	MEDIUM
Positivity Rate	16% of tests performed in Butler County	High Positivity (over 9.99% of tests)
Incidence per 100,000 population	178.0 per 100,000	High Spread (over 99.99 per 100,000)

The Butler County General Health District will continue to monitor transmission levels based on previous CDC indicators; however, generalized guidance will now be based on the CDC's Community Level indicators.

Based on the criteria for community levels and Butler County's figures, Butler County is once again at medium community levels.

Figure 1. Cases by Date of Event Since February 1, 2022



All figures show reported cases of COVID-19 in Butler County as of 0800 EDT 09/16/2022. Due to delays in reporting, the numbers of confirmed and probable cases on all figures are subject to change between reports and confirmed and probable case counts are likely to increase. *This should not be assumed to be the total disease burden of COVID-19 in Butler County only those that have been laboratory confirmed OR meet ODH probable case criteria AND reported to Public Health.

*Data is provisional – only confirmed or probable COVID-19 cases are included in counts. Report reflects time period since the introduction of SARS-CoV-2 into humans, measured in days. Data accessed from the Ohio Disease Reporting System (ODRS) on 09/16/2022 at 0800 EDT.

**Deaths are now reconciled to the Ohio Department of Health's available data to avoid discrepancies between the state and local numbers. ODH's protocol has changed to avoid reconciliation errors and now only includes those deaths that have been reconciled with Vital statistics and may not match what has been reported to the CDC which are provisional numbers. This is a lagging indicator and will be multiple weeks behind.

#Gathered from CDC's Data Tracker of Butler County 09/16/2022 0800 EDT accessible at <https://covid.cdc.gov/covid-data-tracker/#county-view>

Figure 2. Reported Cases of COVID-19 by Date of Event 2020-2022*

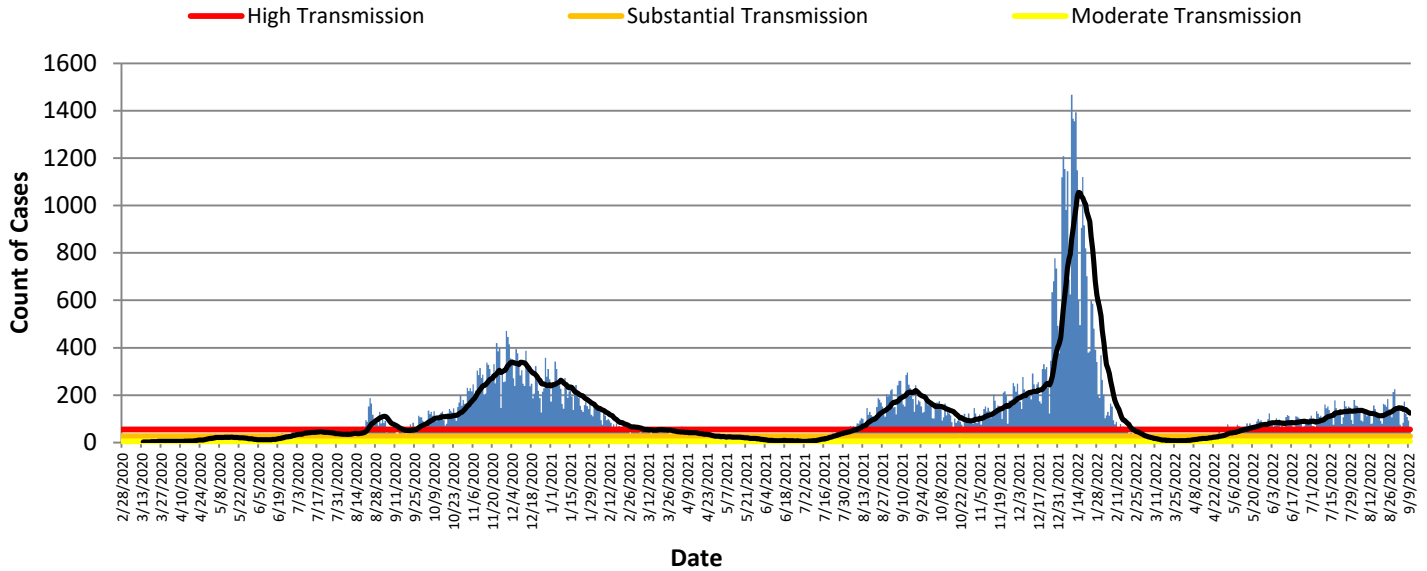


Table 2: Total Reported* Cases by ZIP Code					
ZIP Code	Number of Cases	New Cases (09/04-09/10)	Change in cases from previous 7 days (08/28-09/03)		% of Cases
45011	19935	125	-30.9%	High	18.4%
45044	15619	99	-45.3%	High	14.4%
45013	14483	102	-45.7%	High	13.4%
45069	14704	94	-24.8%	High	13.6%
45014	12707	80	8.1%	High	11.7%
45056	6821	52	-35.0%	High	6.3%
45042	7205	46	-31.3%	High	6.7%
45067	4372	25	-40.5%	High	4.0%
45050	3037	7	-72.0%	Substantial	2.8%
45015	3131	32	-22.0%	High	2.9%
45241	1656	4	-75.0%		1.5%
45053	751	1	-80.0%	High	0.7%
45005	708	4	-20.0%		0.7%
45064	422	7	133.3%		0.4%
45246	205	2	-33.3%		0.2%
45062	164	1	-50.0%		0.2%
Cases lacking zip code information or from zip codes with too few cases	2,226	14		-	2.1%
Butler County (inclusive)	108,146	695	-355 (-33.8%)	High	100%

Zip-codes that have transmissions not rated have most of their populations outside of Butler County. Zip-codes with too few cases have been removed for privacy concerns.

New Cases are determined by "Date of Event" which is when the case was ill/test was collected. CDC determines new cases by "Date of Report".

Table 2 shows the zip-code level data that is new for this week. Almost all zip codes are in high transmission.

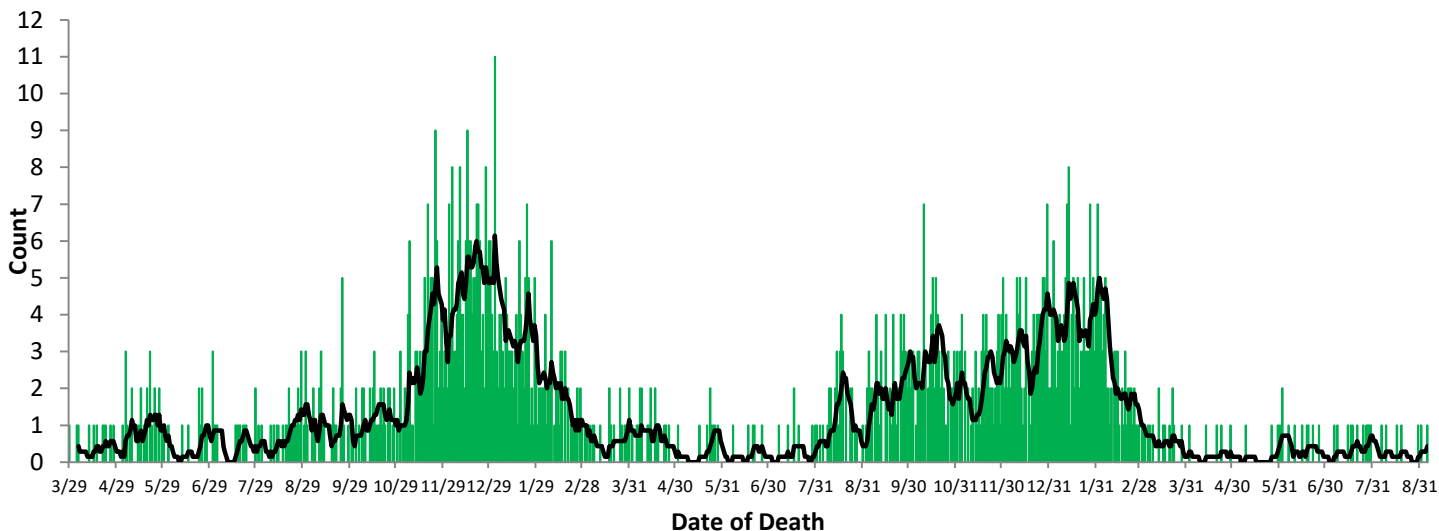
All figures show reported cases of COVID-19 in Butler County as of 0800 EDT 09/16/2022. Due to delays in reporting, the numbers of confirmed and probable cases on all figures are subject to change between reports and confirmed and probable case counts are likely to increase. *This should not be assumed to be the total disease burden of COVID-19 in Butler County only those that have been laboratory confirmed OR meet ODH probable case criteria AND reported to Public Health.

*Data is provisional – only confirmed or probable COVID-19 cases are included in counts. Report reflects time period since the introduction of SARS-CoV-2 into humans, measured in days. Data accessed from the Ohio Disease Reporting System (ODRS) on 09/16/2022 at 0800 EDT.

**Deaths are now reconciled to the Ohio Department of Health's available data to avoid discrepancies between the state and local numbers. ODH's protocol has changed to avoid reconciliation errors and now only includes those deaths that have been reconciled with Vital statistics and may not match what has been reported to the CDC which are provisional numbers. This is a lagging indicator and will be multiple weeks behind.

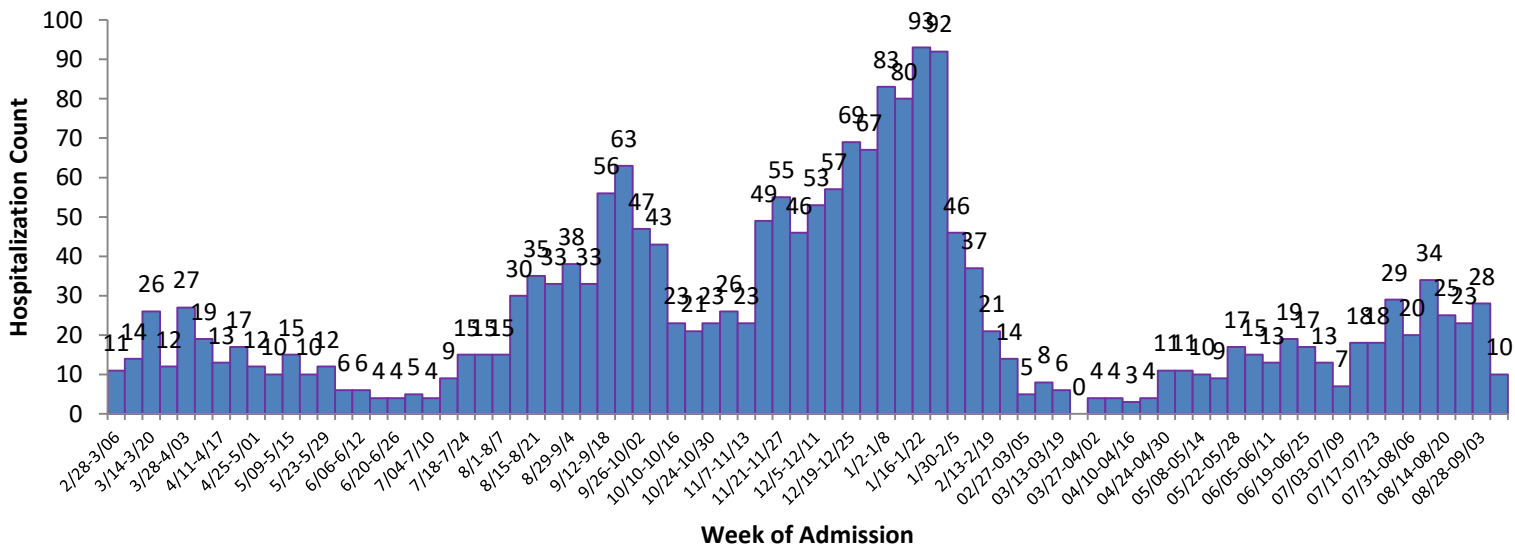
#Gathered from CDC's Data Tracker of Butler County 09/16/2022 0800 EDT accessible at <https://covid.cdc.gov/covid-data-tracker/#county-view>

Figure 3. Confirmed COVID-19 Deaths by date of death, 2020-22**



Figures 3 and 4 show severe case outcomes. These are both lagging indicators since it typically takes time for a case to succumb to COVID and well over a month for a COVID-19 death to be verified. Deaths will take about 4-6 weeks to begin to register for last week.

Figure 4. COVID-19 Hospitalizations of Butler County Residents by Week since the first week of March 2021



All figures show reported cases of COVID-19 in Butler County as of 0800 EDT 09/16/2022. Due to delays in reporting, the numbers of confirmed and probable cases on all figures are subject to change between reports and confirmed and probable case counts are likely to increase. *This should not be assumed to be the total disease burden of COVID-19 in Butler County only those that have been laboratory confirmed OR meet ODH probable case criteria AND reported to Public Health.
 *Data is provisional – only confirmed or probable COVID-19 cases are included in counts. Report reflects time period since the introduction of SARS-CoV-2 into humans, measured in days. Data accessed from the Ohio Disease Reporting System (ODRS) on 09/16/2022 at 0800 EDT.
 **Deaths are now reconciled to the Ohio Department of Health’s available data to avoid discrepancies between the state and local numbers. ODH’s protocol has changed to avoid reconciliation errors and now only includes those deaths that have been reconciled with Vital statistics and may not match what has been reported to the CDC which are provisional numbers. This is a lagging indicator and will be multiple weeks behind.
 #Gathered from CDC’s Data Tracker of Butler County 09/16/2022 0800 EDT accessible at <https://covid.cdc.gov/covid-data-tracker/#county-view>