

Butler County General Health District's 74th COVID-19 Update (7/24/2021)

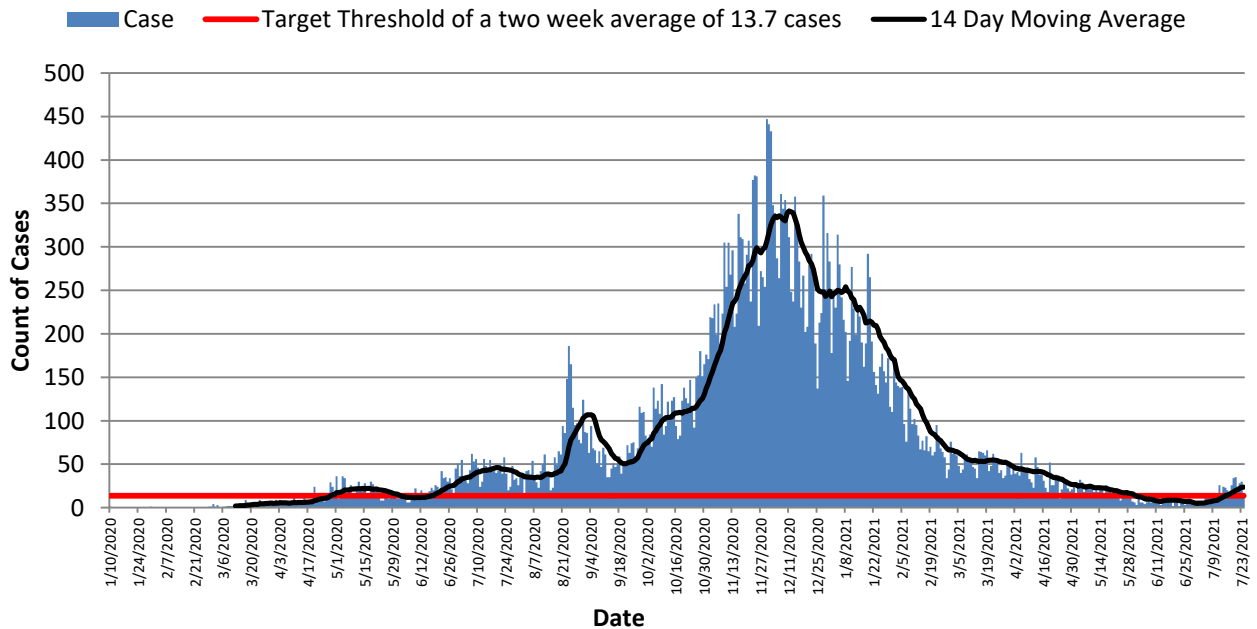
Confirmed and Probable COVID-19 Cases Reported to Butler County* Butler County Residents, 2020-21

Total # of Cases (7/24):	40,356*
ODH verified Deaths (7/24):	614**
Hospitalizations (7/24):	1,805
ICU admissions (7/24):	160
First Case Reported:	3/11/2020
Last Case Reported (so far):	7/24/2021
Confirmed Cases:	35,820
Probable Cases:	4,536
Age Range:	<1-103
Median Age:	39
Mean Age:	40.7
Incidence (thru 7/24):	10,533.1 per 100,000
Prevalence (thru 7/24):	10.5% of BC population
14-Day Positivity Rate (7/20):	3.5% of tests performed in BC

For the first time in many months, Butler County's COVID-19 case count has begun to show an increase when compared with previous weeks. In addition, our vaccination rates have slowed significantly. News of increases in the Delta variant across the US, Ohio, and Butler County are concerning. Ohio is reporting around 30% of all cases from the Delta variant, and that number is expected to rise in the next two weeks. The Delta variant spreads faster than other forms of the virus and makes people sicker. Current vaccines are showing good protection from the Delta variant. Vaccination remains the single best protection against COVID-19 infection in all its forms. A schedule of vaccine clinics is on our website, <http://health.bcoho.us/>. If you are not yet vaccinated, NOW is the time.

Table 1: Key Indicators of Disease Spread		
Indicator	Last 2 Weeks	Governor DeWine's Target
Incidence per 100,000 population	86.1 per 100,000	50 per 100,000
Cumulative Case Count	330 cases through 14 days	191.6 through 14 days
Daily Average of new cases	23.6 per day through 14 days	13.7 per day through 14 days

Figure 1. Reported Cases of COVID-19 by Date of Event*



All figures show reported cases of COVID-19 in Butler County as of 1700 EDT 07/26/2021. Due to delays in reporting, the numbers of confirmed and probable cases on all figures are subject to change between reports and confirmed and probable case counts are likely to increase. *This should not be assumed to be the total disease burden of COVID-19 in Butler County only those that have been laboratory confirmed OR meet ODH probable case criteria AND reported to Public Health.

*Data is provisional – only confirmed or probable COVID-19 cases are included in counts. Report reflects time period since the introduction of SARS-CoV-2 into humans, measured in days. Data accessed from the Ohio Disease Reporting System (ODRS) on 07/26/2021 at 1700 EST.

**Deaths are now reconciled to the Ohio Department of Health's available data to avoid discrepancies between the state and local numbers. ODH's protocol has changed to avoid reconciliation errors and now only includes those deaths that have been reconciled with Vital statistics and may not match what has been reported to the CDC which are provisional numbers. This is a lagging indicator and will be multiple weeks behind.

Vaccination numbers were collected 1400 EDT 7/29/2021 from ODH COVID-19 Dashboard and Innovate Ohio Platform. Vaccinations are considered started on the day an individual receives first dose of a COVID-19 vaccine. Vaccinations are considered completed on the day an individual receives the final recommended dose of a vaccine.

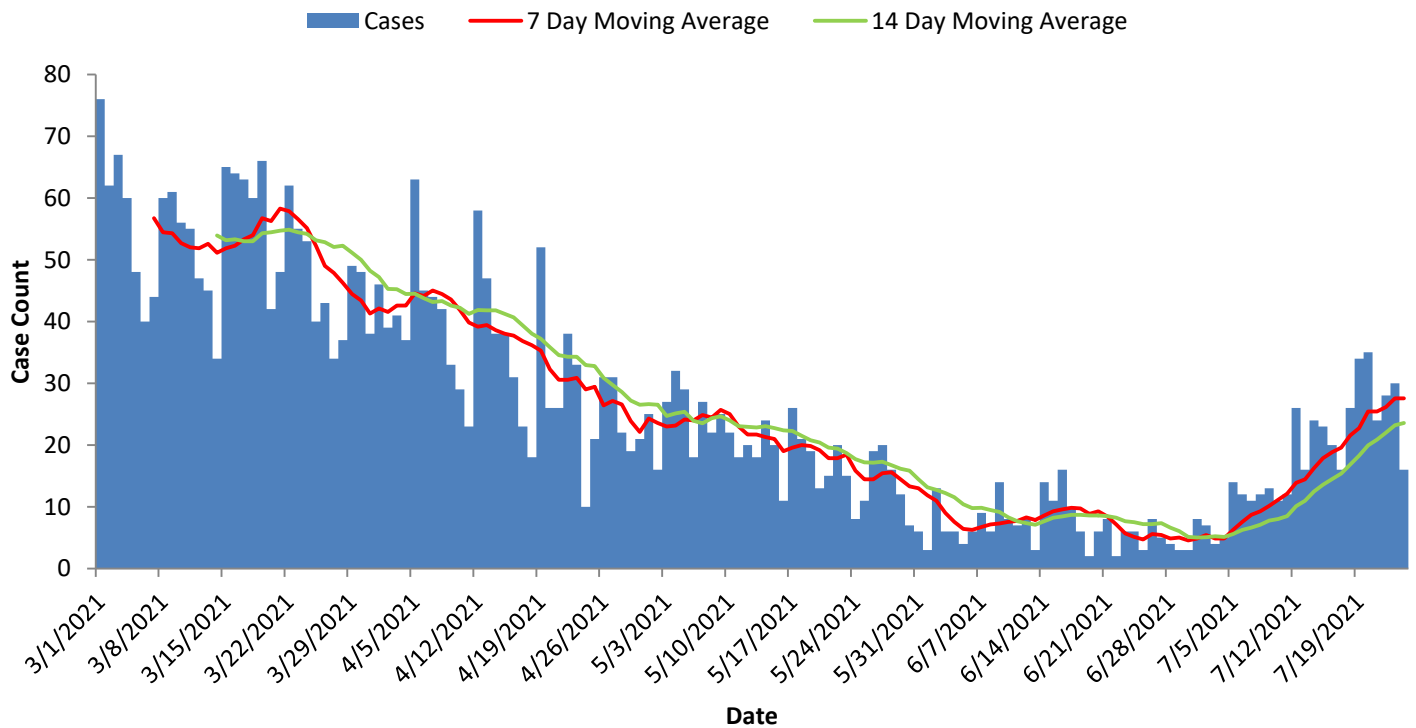
#Maps created by ODH on 7/23/2021

Table 2: Total Reported* Cases by ZIP Code						
ZIP Code	Number of Cases	New Cases (7/11-7/24)	Change in cases from previous two weeks (6/27-7/10)	Incidence per 100,000 thru 07/24	% of Cases	
45011	6939	68	51 (↑300%)	9958.8	17.2%	
45044	5356	46	25 (↑119.0%)	10139.7	13.3%	
45013	5277	40	28(↑233.3%)	10029.8	13.1%	
45069	5168	47	36 (↑327.3%)	10534.0	12.8%	
45014	5011	36	20(↑125.0%)	11410.2	12.4%	
45056	3632	13	10 (↑333.3%)	13432.9	9.0%	
45042	2654	26	21 (↑420%)	10033.6	6.6%	
45067	1567	16	9 (↑128.6%)	11275.0	3.9%	
45050	1225	18	12 (↑200.0%)	14330.8	3.0%	
45015	1034	7	1 (↑16.7%)	8589.5	2.6%	
45241	552	2	2 (↑0%)		1.4%	
45053	337	6	3 (↑100%)	9853.8	0.8%	
45005	260	1	1 (↑)		0.6%	
45064	152	0	0		0.4%	
45246	64	0	0		0.2%	
45062	57	0	1			
Cases lacking zip code information or from zip codes with too few cases	1,070	3		-	2.7%	
Butler County (inclusive)	40,356	330	218(↑194.6%)	10,533.13	100%	

Zip-codes not calculated have most of their population outside of Butler County. Rate given for comparison by population and will be higher than the actual amount. Zip-codes with too few cases have been removed for privacy concerns.

New Cases are determined by "Date of Event" which is when the case was ill/test was collected.

Figure 2. Cases by Date of Event Since March 1, 2021



All figures show reported cases of COVID-19 in Butler County as of 1700 EDT 07/26/2021. Due to delays in reporting, the numbers of confirmed and probable cases on all figures are subject to change between reports and confirmed and probable case counts are likely to increase. *This should not be assumed to be the total disease burden of COVID-19 in Butler County only those that have been laboratory confirmed OR meet ODH probable case criteria AND reported to Public Health.

*Data is provisional – only confirmed or probable COVID-19 cases are included in counts. Report reflects time period since the introduction of SARS-CoV-2 into humans, measured in days. Data accessed from the Ohio Disease Reporting System (ODRS) on 07/26/2021 at 1700 EST.

**Deaths are now reconciled to the Ohio Department of Health's available data to avoid discrepancies between the state and local numbers. ODH's protocol has changed to avoid reconciliation errors and now only includes those deaths that have been reconciled with Vital statistics and may not match what has been reported to the CDC which are provisional numbers. This is a lagging indicator and will be multiple weeks behind.

Vaccination numbers were collected 1400 EDT 7/29/2021 from ODH COVID-19 Dashboard and Innovate Ohio Platform. Vaccinations are considered started on the day an individual receives first dose of a COVID-19 vaccine. Vaccinations are considered completed on the day an individual receives the final recommended dose of a vaccine.

#Maps created by ODH on 7/23/2021

Figure 3. Confirmed COVID-19 Deaths by date of death, 2020-21**

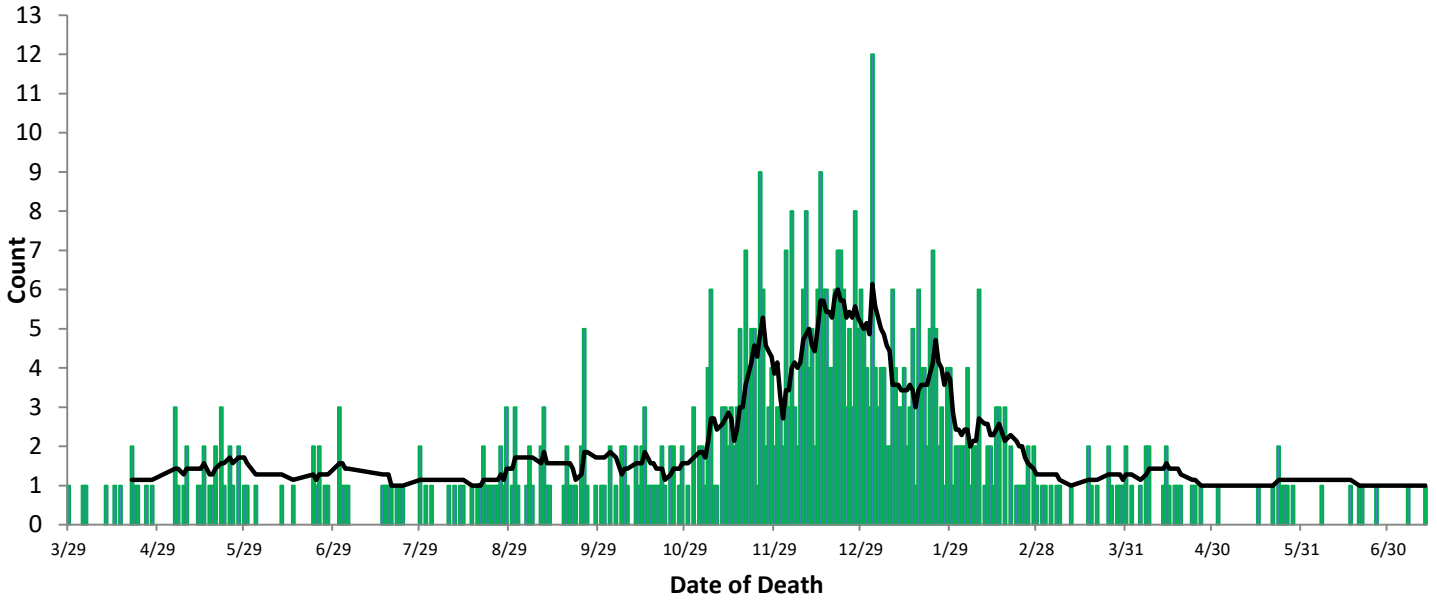
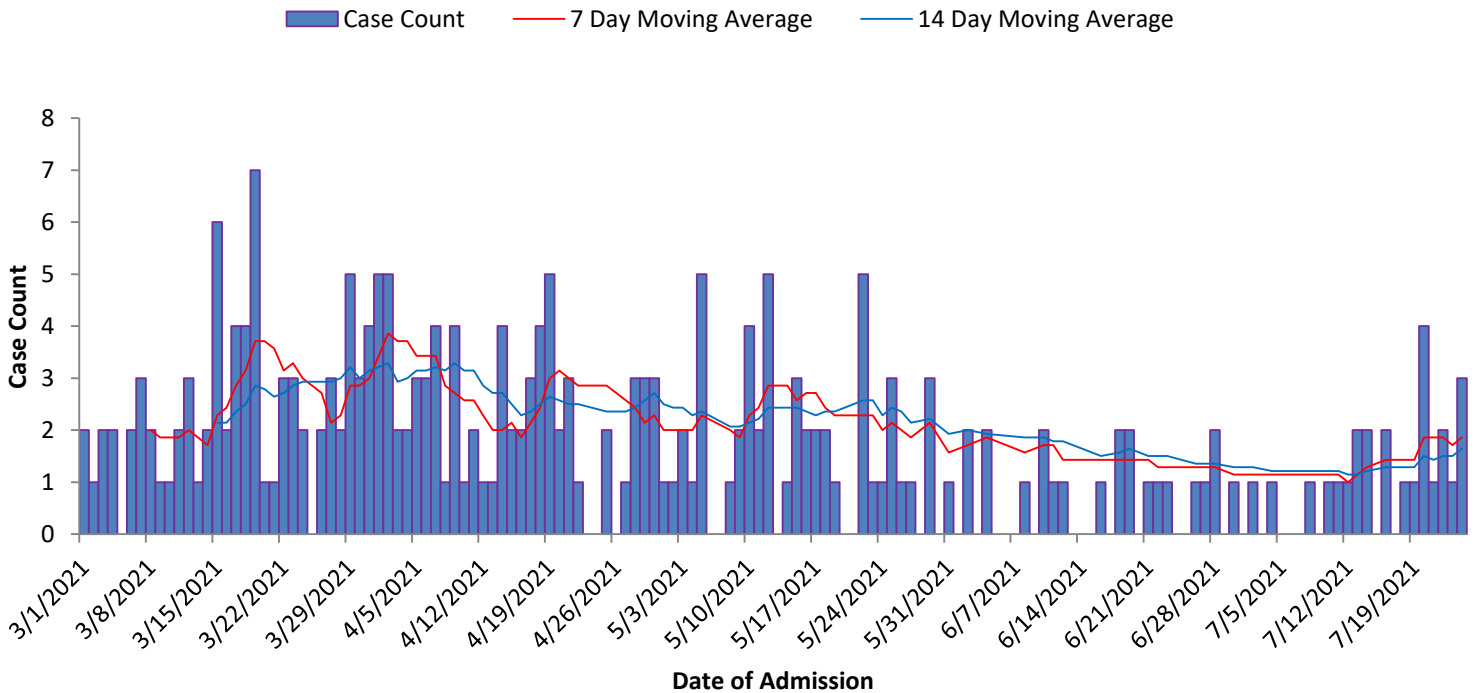


Figure 4. Hospitalizations Since March 1, 2021



All figures show reported cases of COVID-19 in Butler County as of 1700 EDT 07/26/2021. Due to delays in reporting, the numbers of confirmed and probable cases on all figures are subject to change between reports and confirmed and probable case counts are likely to increase. *This should not be assumed to be the total disease burden of COVID-19 in Butler County only those that have been laboratory confirmed OR meet ODH probable case criteria AND reported to Public Health.

**Data is provisional – only confirmed or probable COVID-19 cases are included in counts. Report reflects time period since the introduction of SARS-CoV-2 into humans, measured in days. Data accessed from the Ohio Disease Reporting System (ODRS) on 07/26/2021 at 1700 EST.

**Deaths are now reconciled to the Ohio Department of Health’s available data to avoid discrepancies between the state and local numbers. ODH’s protocol has changed to avoid reconciliation errors and now only includes those deaths that have been reconciled with Vital statistics and may not match what has been reported to the CDC which are provisional numbers. This is a lagging indicator and will be multiple weeks behind.

Vaccination numbers were collected 1400 EDT 7/29/2021 from ODH COVID-19 Dashboard and Innovate Ohio Platform. Vaccinations are considered started on the day an individual receives first dose of a COVID-19 vaccine. Vaccinations are considered completed on the day an individual receives the final recommended dose of a vaccine.

#Maps created by ODH on 7/23/2021

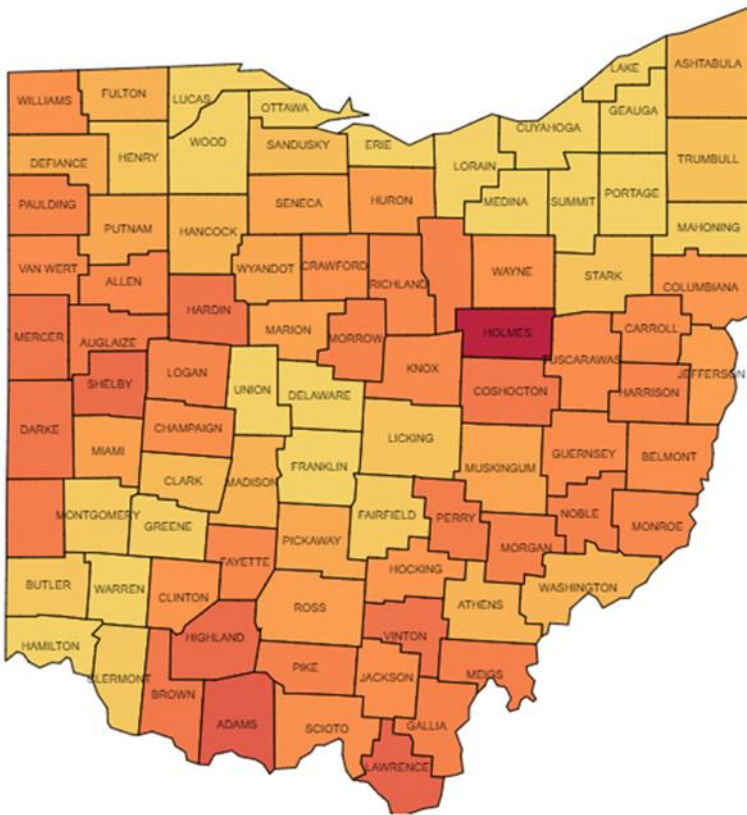
COVID-19 Vaccinations in Butler County and Ohio

Table 3. Vaccination Status by Age Group in Butler County and Ohio

Age Group	Butler County	Ohio	Butler County	Ohio
	Vaccine Started		Vaccine Completed	
0-19	14.6%	14.1%	12.4%	12.2%
20-29	37.0%	41.3%	33.6%	37.6%
30-39	48.7%	48.3%	44.4%	44.6%
40-49	55.2%	54.6%	51.2%	51.0%
50-59	62.7%	62.8%	58.8%	59.2%
60-64	72.9%	72.9%	69.1%	69.3%
65-69	79.6%	81.0%	75.7%	77.5%
70-74	85.6%	85.5%	82.3%	82.3%
75-79	80.4%	81.8%	76.9%	78.6%
80+	77.7%	79.4%	74.5%	76.0%

Percentages based on total populations not just those eligible.
 % of Butler County that has received at least one dose: 46.79%
 % of Butler County with vaccine completed: 43.42%
 % of Ohio that has received at least one dose: 49.15%
 % of Ohio with vaccine completed: 45.98%

Figure 5. % of Ohio Population Vaccinated[#]

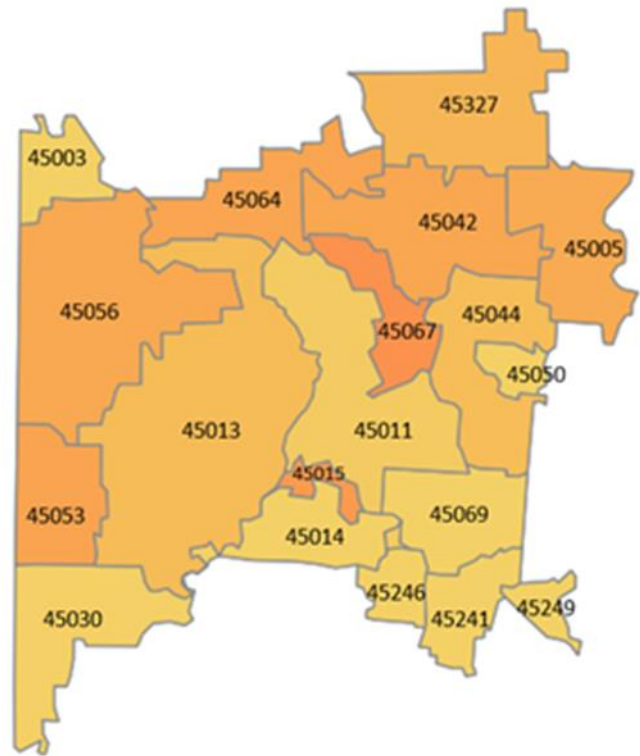


Percent Vaccinated

0.00%

47.17%

Figure 6. % of Butler County Vaccinated[#]



All figures show reported cases of COVID-19 in Butler County as of 1700 EDT 07/26/2021. Due to delays in reporting, the numbers of confirmed and probable cases on all figures are subject to change between reports and confirmed and probable case counts are likely to increase. *This should not be assumed to be the total disease burden of COVID-19 in Butler County only those that have been laboratory confirmed OR meet ODH probable case criteria AND reported to Public Health.

*Data is provisional – only confirmed or probable COVID-19 cases are included in counts. Report reflects time period since the introduction of SARS-CoV-2 into humans, measured in days. Data accessed from the Ohio Disease Reporting System (ODRS) on 07/26/2021 at 1700 EST.

**Deaths are now reconciled to the Ohio Department of Health's available data to avoid discrepancies between the state and local numbers. ODH's protocol has changed to avoid reconciliation errors and now only includes those deaths that have been reconciled with Vital statistics and may not match what has been reported to the CDC which are provisional numbers. This is a lagging indicator and will be multiple weeks behind.

Vaccination numbers were collected 1400 EDT 7/29/2021 from ODH COVID-19 Dashboard and Innovate Ohio Platform. Vaccinations are considered started on the day an individual receives first dose of a COVID-19 vaccine. Vaccinations are considered completed on the day an individual receives the final recommended dose of a vaccine.

#Maps created by ODH on 7/23/2021