

## Butler County General Health District's 73<sup>rd</sup> COVID-19 Update (7/10/2021)

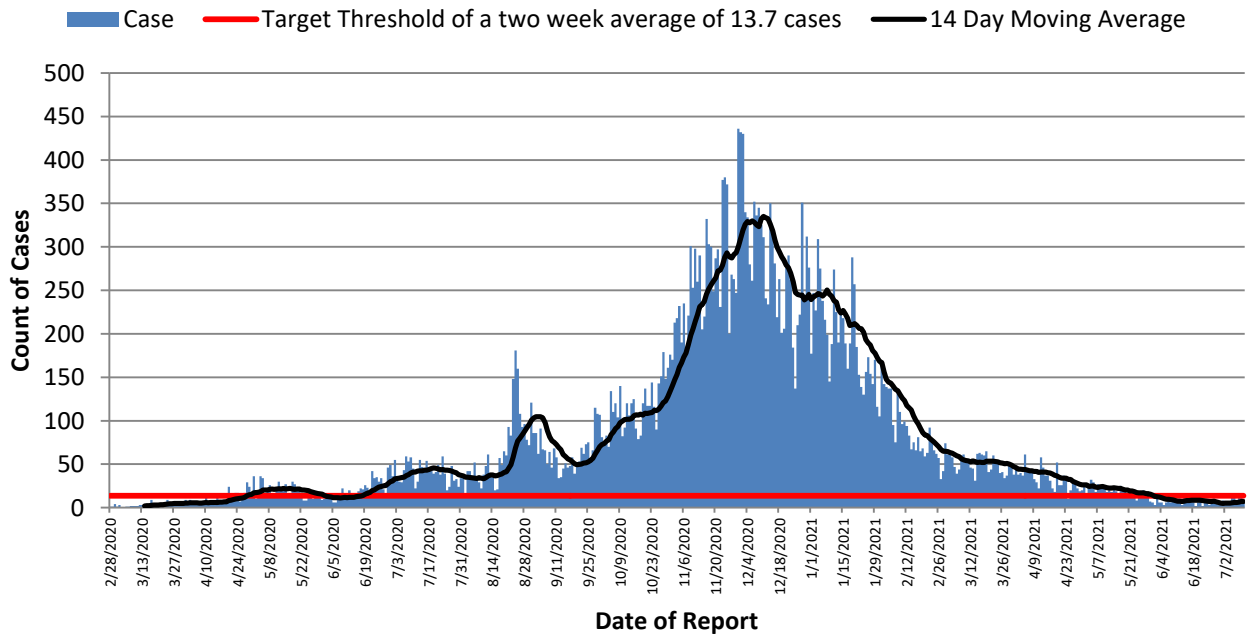
### Confirmed and Probable COVID-19 Cases Reported to Butler County\* Butler County Residents, 2020-21

<b>Total # of Cases (7/10):</b>	<b>39,326*</b>
<b>ODH verified Deaths (7/10):</b>	<b>612**</b>
<b>Hospitalizations (7/10):</b>	<b>1,779</b>
<b>ICU admissions (7/10):</b>	<b>158</b>
<b>First Case Reported:</b>	3/11/2020
<b>Last Case Reported (so far):</b>	7/10/2021
<b>Confirmed Cases:</b>	<b>34,952</b>
<b>Probable Cases:</b>	<b>4,374</b>
<b>Age Range:</b>	<1-103
<b>Median Age:</b>	40
<b>Mean Age:</b>	40.9
<b>Incidence (thru 7/10):</b>	10,264.2 per 100,000
<b>Prevalence (thru 7/10):</b>	<b>10.3% of BC population</b>
<b>14-Day Positivity Rate (6/22):</b>	<b>1.4% of tests performed in BC</b>

For the first time in many months, Butler County's COVID-19 case count has begun to show a slight rise when compared with previous weeks. In addition, our vaccination rates have slowed significantly. News of increases in the Delta variant across the US, Ohio, and Butler County are concerning. Ohio is reporting around 30% of all cases from the Delta variant, and that number is expected to rise in the next two weeks. The Delta variant spreads faster than other forms of the virus and makes people sicker. Current vaccines are showing good protection from the Delta variant. Vaccination remains the single best protection against COVID-19 infection in all its forms. A schedule of vaccine clinics is on our website, <http://health.bcoho.us/>. If you are not yet vaccinated, NOW is the time.

Table 1: Key Indicators of Disease Spread		
Indicator	Last 2 Weeks	Governor DeWine's Target
<b>Incidence per 100,000 population</b>	<b>25.3 per 100,000</b>	<b>50 per 100,000</b>
Cumulative Case Count	97 cases through 14 days	191.6 through 14 days
Daily Average of new cases	6.9 per day through 14 days	13.7 per day through 14 days

**Figure 1. Reported Cases of COVID-19 by Date of Event\***



All figures show reported cases of COVID-19 in Butler County as of 1700 EDT 07/14/2021. Due to delays in reporting, the numbers of confirmed and probable cases on all figures are subject to change between reports and confirmed and probable case counts are likely to increase. \*This should not be assumed to be the total disease burden of COVID-19 in Butler County only those that have been laboratory confirmed OR meet ODH probable case criteria AND reported to Public Health.

\*Data is provisional – only confirmed or probable COVID-19 cases are included in counts. Report reflects time period since the introduction of SARS-CoV-2 into humans, measured in days. Data accessed from the Ohio Disease Reporting System (ODRS) on 07/14/2021 at 1700 EST.

\*\*Deaths are now reconciled to the Ohio Department of Health's available data to avoid discrepancies between the state and local numbers. ODH's protocol has changed to avoid reconciliation errors and now only includes those deaths that have been reconciled with Vital statistics and may not match what has been reported to the CDC which are provisional numbers. This is a lagging indicator and will be multiple weeks behind.

Vaccination numbers were collected 1200 EDT 7/15/2021 from ODH COVID-19 Dashboard and Innovate Ohio Platform. Vaccinations are considered started on the day an individual receives first dose of a COVID-19 vaccine. Vaccinations are considered completed on the day an individual receives the final recommended dose of a vaccine.

#Maps created by ODH on 6/30/2021.

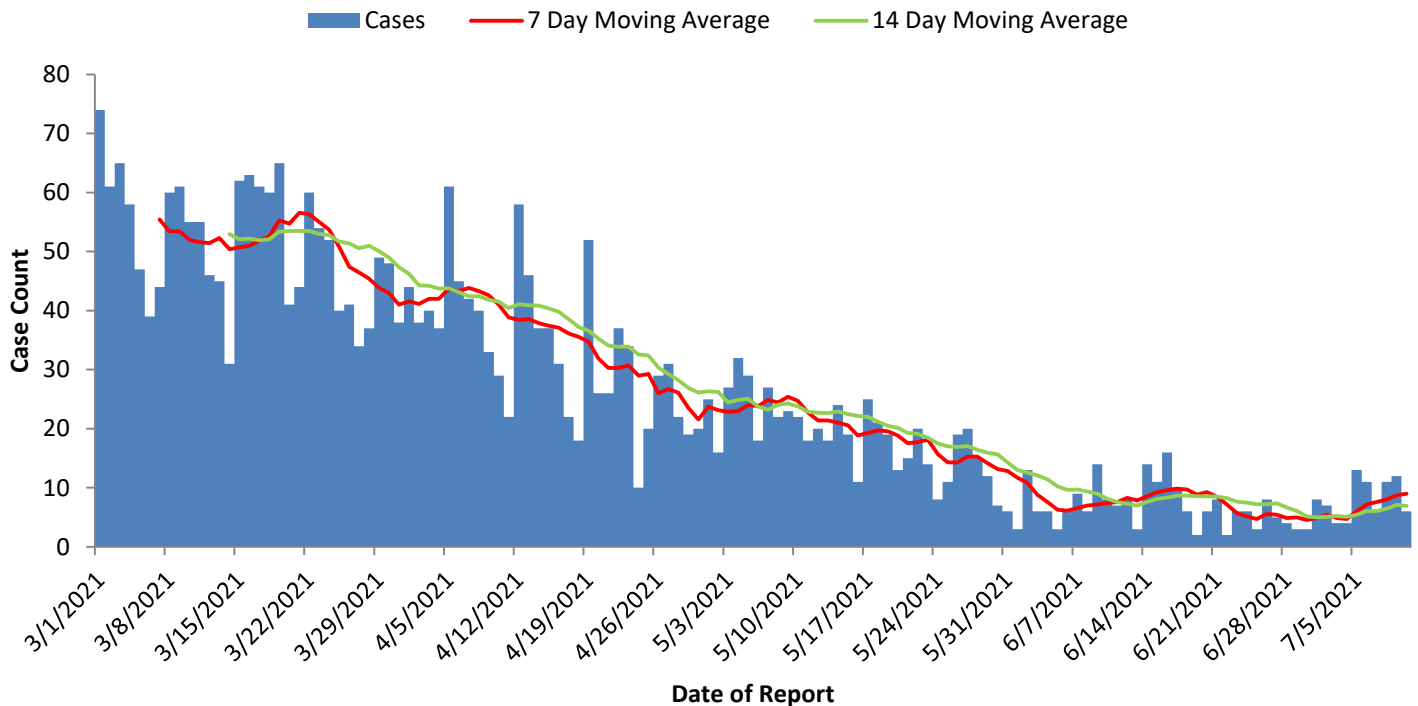
**Table 2: Total Reported\* Cases by ZIP Code**

ZIP Code	Number of Cases	New Cases (6/27-7/10)	Change in cases from previous two weeks (6/13-6/26)	Incidence per 100,000 thru 06/12	% of Confirmed Cases
45011	6866	15	-10 (↓40%)	9854.0	17.5%
45013	5230	11	0	9940.5	13.3%
45044	5187	17	6 (↑54.5%)	9819.8	13.2%
45069	5113	9	-6 (↓40.0%)	10421.9	13.0%
45014	4967	12	-5(↓29.4%)	11310.0	12.6%
45056	3618	3	0	13381.2	9.2%
45042	2573	6	5 (↑500%)	9727.4	6.5%
45067	1550	6	3 (↑100%)	11152.7	3.9%
45050	1207	6	3 (↑100%)	14120.3	3.1%
45015	1025	6	3 (↑100%)	8514.7	2.6%
45241	541	1	-3 (↓66.7%)	-	1.4%
45053	330	3	1 (↑200%)	9649.1	0.8%
45064	152	0	-1 (↓100%)	-	0.4%
45246	60	0	0	-	0.2%
45062	57	0	0	-	0.1%
Cases lacking zip code information or from zip codes with too few cases	80			-	2.2%
<b>Butler County (inclusive)</b>	<b>39,326</b>	<b>97</b>	<b>-4 (↓4%)</b>	<b>10,264.3</b>	<b>100%</b>

Zip-codes not calculated have most of their population outside of Butler County. Rate given for comparison by population and will be higher than the actual amount. Zip-codes with too few cases have been removed for privacy concerns.

**Red indicates zip codes where the percentage increase is greater than the increase from the previous 2 week period.**

**Figure 2. Cases by Date of Event Since March 1, 2021**



All figures show reported cases of COVID-19 in Butler County as of 1700 EDT 07/14/2021. Due to delays in reporting, the numbers of confirmed and probable cases on all figures are subject to change between reports and confirmed and probable case counts are likely to increase. \*This should not be assumed to be the total disease burden of COVID-19 in Butler County only those that have been laboratory confirmed OR meet ODH probable case criteria AND reported to Public Health.

\*Data is provisional – only confirmed or probable COVID-19 cases are included in counts. Report reflects time period since the introduction of SARS-CoV-2 into humans, measured in days. Data accessed from the Ohio Disease Reporting System (ODRS) on 07/14/2021 at 1700 EST.

\*\*Deaths are now reconciled to the Ohio Department of Health’s available data to avoid discrepancies between the state and local numbers. ODH’s protocol has changed to avoid reconciliation errors and now only includes those deaths that have been reconciled with Vital statistics and may not match what has been reported to the CDC which are provisional numbers. This is a lagging indicator and will be multiple weeks behind.

Vaccination numbers were collected 1200 EDT 7/15/2021 from ODH COVID-19 Dashboard and Innovate Ohio Platform. Vaccinations are considered started on the day an individual receives first dose of a COVID-19 vaccine. Vaccinations are considered completed on the day an individual receives the final recommended dose of a vaccine.

#Maps created by ODH on 6/30/2021.

Figure 3. Confirmed COVID-19 Deaths by date of death, 2020-21\*\*

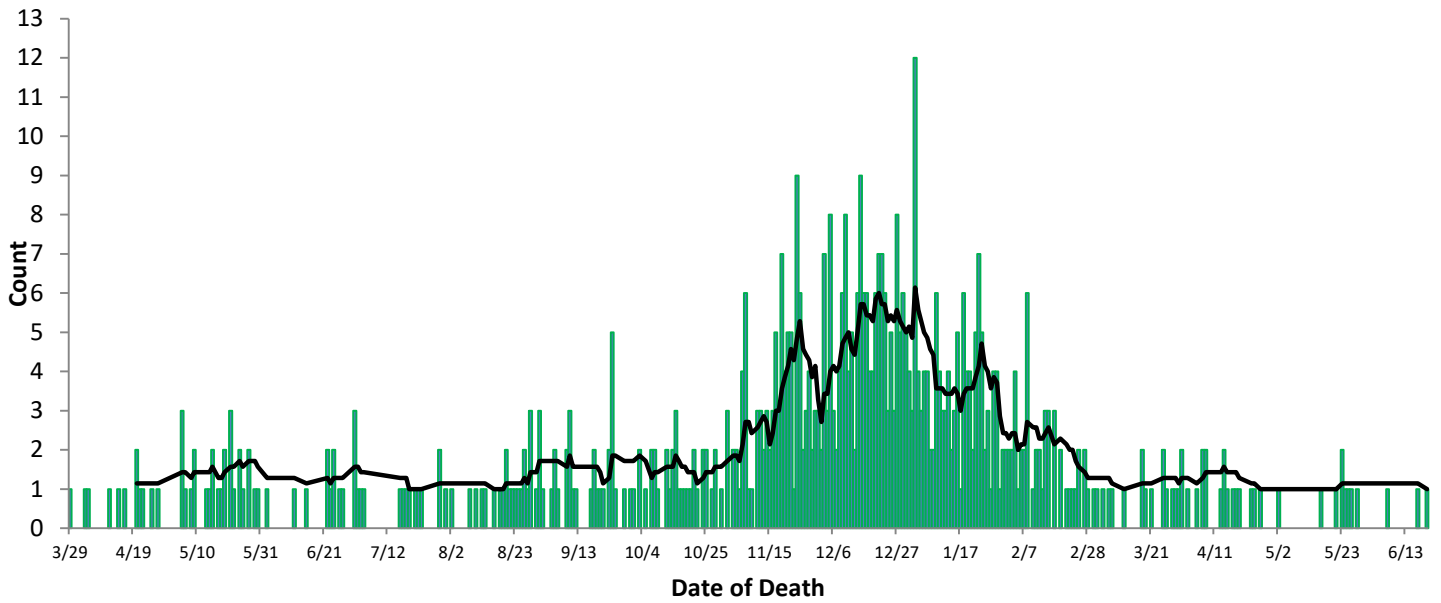
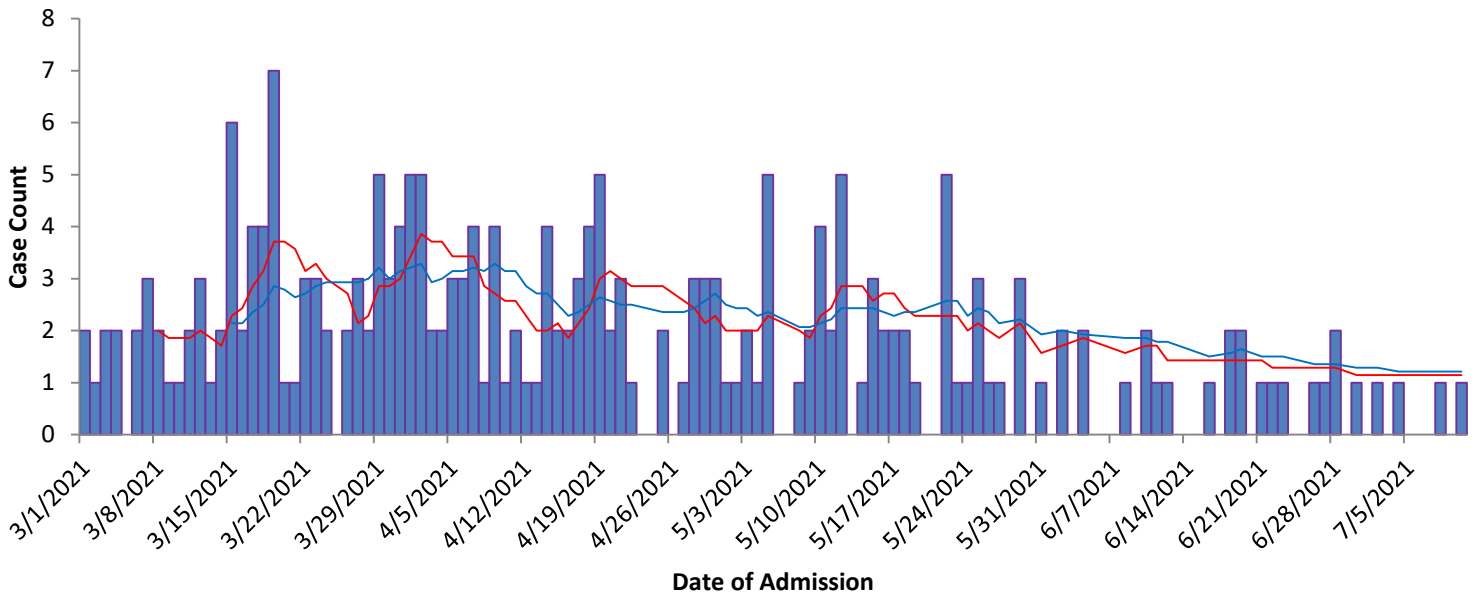


Figure 4. Hospitalizations Since March 1, 2021

Case Count      7 Day Moving Average      14 Day Moving Average



All figures show reported cases of COVID-19 in Butler County as of 1700 EDT 07/14/2021. Due to delays in reporting, the numbers of confirmed and probable cases on all figures are subject to change between reports and confirmed and probable case counts are likely to increase. \*This should not be assumed to be the total disease burden of COVID-19 in Butler County only those that have been laboratory confirmed OR meet ODH probable case criteria AND reported to Public Health.

\*\*Data is provisional – only confirmed or probable COVID-19 cases are included in counts. Report reflects time period since the introduction of SARS-CoV-2 into humans, measured in days. Data accessed from the Ohio Disease Reporting System (ODRS) on 07/14/2021 at 1700 EST.

\*\*Deaths are now reconciled to the Ohio Department of Health's available data to avoid discrepancies between the state and local numbers. ODH's protocol has changed to avoid reconciliation errors and now only includes those deaths that have been reconciled with Vital statistics and may not match what has been reported to the CDC which are provisional numbers. This is a lagging indicator and will be multiple weeks behind.

Vaccination numbers were collected 1200 EDT 7/15/2021 from ODH COVID-19 Dashboard and Innovate Ohio Platform. Vaccinations are considered started on the day an individual receives first dose of a COVID-19 vaccine. Vaccinations are considered completed on the day an individual receives the final recommended dose of a vaccine.

#Maps created by ODH on 6/30/2021.

# COVID-19 Vaccinations in Butler County and Ohio

Table 3. Vaccination Status by Age Group in Butler County and Ohio

Age Group	Butler County	Ohio	Butler County	Ohio
	Vaccine Started		Vaccine Completed	
0-19	13.6%	13.2%	11.7%	11.6%
20-29	36.0%	40.3%	32.8%	36.7%
30-39	47.4%	47.3%	43.6%	43.7%
40-49	53.9%	53.6%	50.3%	50.1%
50-59	61.6%	61.8%	58.0%	58.3%
60-64	72.1%	72.1%	68.5%	68.5%
65-69	78.8%	80.3%	75.2%	76.8%
70-74	85.0%	84.9%	81.8%	81.7%
75-79	79.8%	81.3%	76.4%	78.0%
80+	77.2%	78.9%	74.2%	75.6%

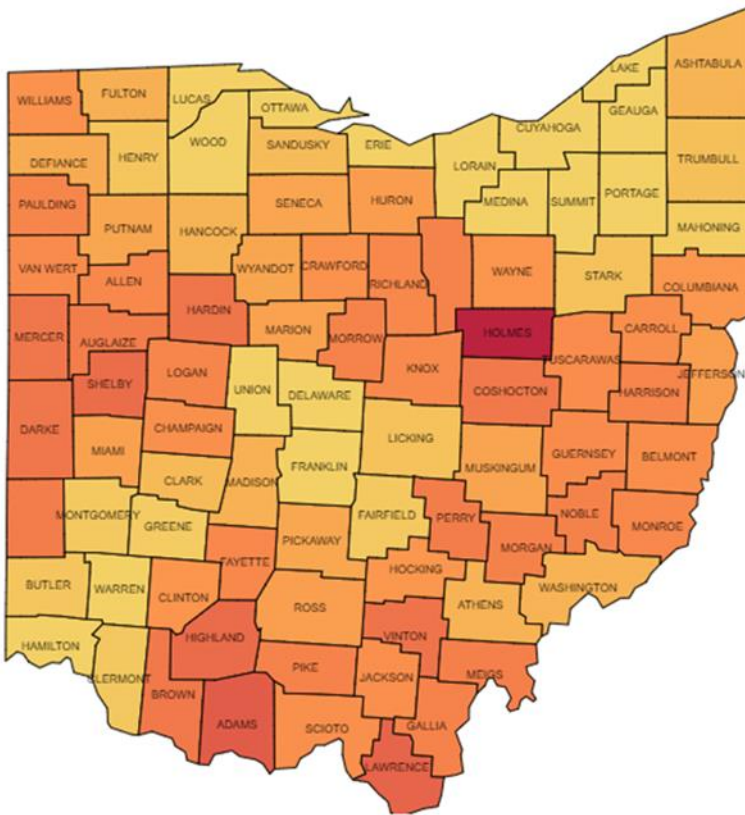
Percentages based on total populations not just those eligible.  
 % of Butler County that has received at least one dose: 45.8%

% of Butler County with vaccine completed: 42.7%

% of Ohio that has received at least one dose: 48.3%

% of Ohio with vaccine completed: 45.2%

Figure 5. % of Ohio Population Vaccinated<sup>#</sup>

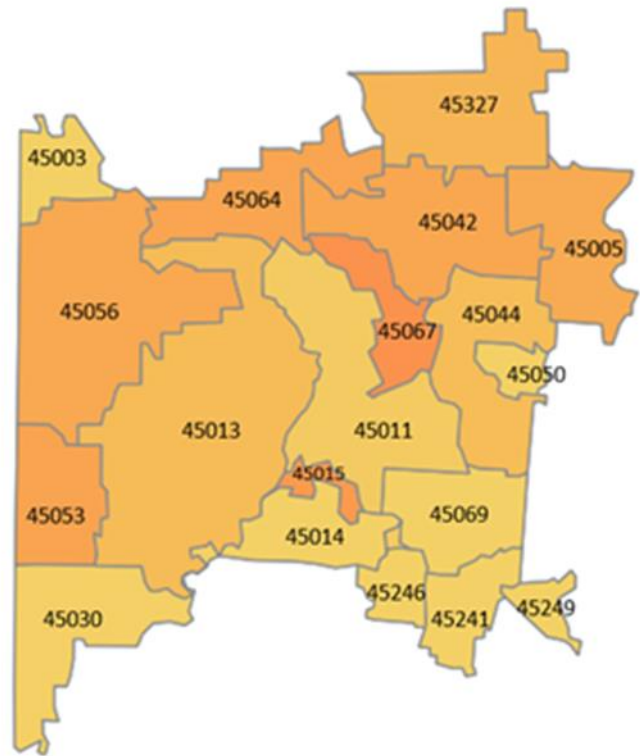


Percent Vaccinated

0.00%

47.17%

Figure 6. % of Butler County Vaccinated<sup>#</sup>



All figures show reported cases of COVID-19 in Butler County as of 1700 EDT 07/14/2021. Due to delays in reporting, the numbers of confirmed and probable cases on all figures are subject to change between reports and confirmed and probable case counts are likely to increase. \*This should not be assumed to be the total disease burden of COVID-19 in Butler County only those that have been laboratory confirmed OR meet ODH probable case criteria AND reported to Public Health.

\*Data is provisional – only confirmed or probable COVID-19 cases are included in counts. Report reflects time period since the introduction of SARS-CoV-2 into humans, measured in days. Data accessed from the Ohio Disease Reporting System (ODRS) on 07/14/2021 at 1700 EST.

\*\*Deaths are now reconciled to the Ohio Department of Health's available data to avoid discrepancies between the state and local numbers. ODH's protocol has changed to avoid reconciliation errors and now only includes those deaths that have been reconciled with Vital statistics and may not match what has been reported to the CDC which are provisional numbers. This is a lagging indicator and will be multiple weeks behind.

Vaccination numbers were collected 1200 EDT 7/15/2021 from ODH COVID-19 Dashboard and Innovate Ohio Platform. Vaccinations are considered started on the day an individual receives first dose of a COVID-19 vaccine. Vaccinations are considered completed on the day an individual receives the final recommended dose of a vaccine.

#Maps created by ODH on 6/30/2021.