



Butler County General Health District's 72nd COVID-19 Update (6/26/2021)

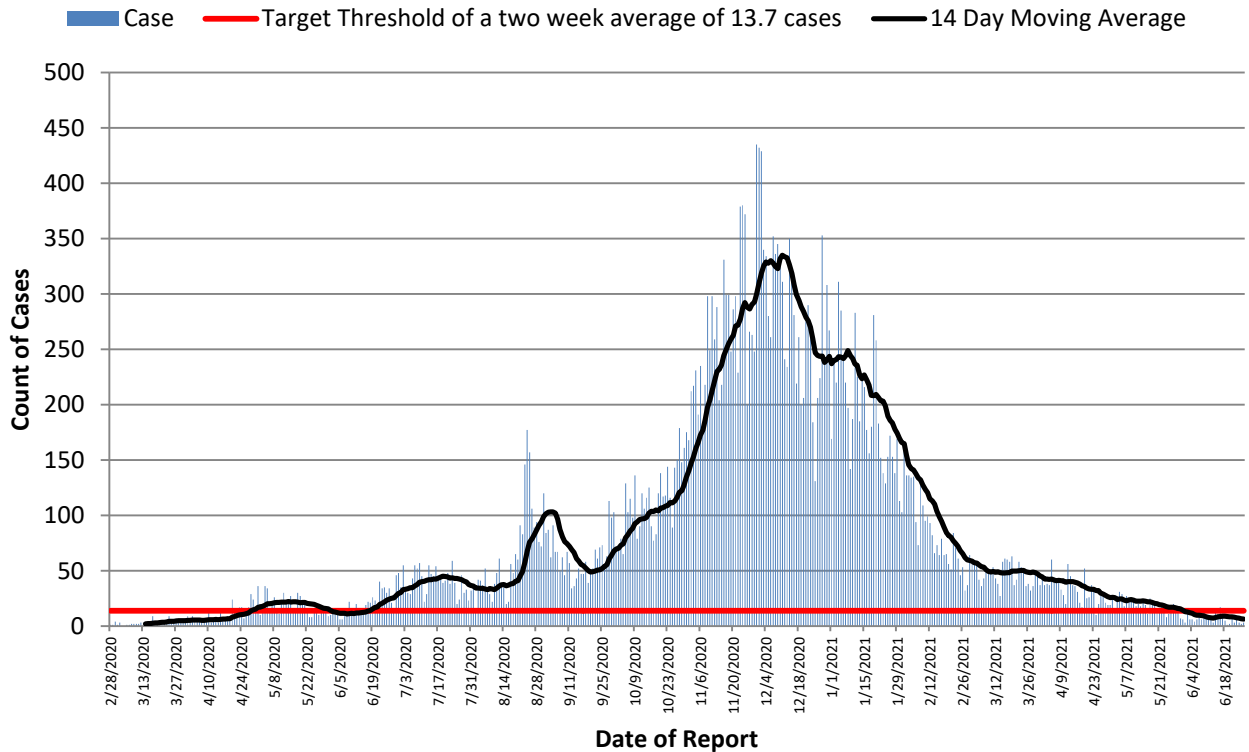
Confirmed and Probable COVID-19 Cases Reported to Butler County*

Butler County Residents, 2020-21

Total # of Cases (06/26):	38,734*
ODH verified Deaths (06/26):	610**
Hospitalizations (06/26):	1,761
ICU admissions (06/26):	156
First Case Reported:	3/11/2020
Last Case Reported (so far):	6/26/2021
Confirmed Cases:	34,438
Probable Cases:	4,296
Age Range:	<1-103
Median Age:	40
Mean Age:	40.9
Incidence (thru 06/26):	10,109.8 per 100,000
Prevalence (thru 06/26):	10.1% of BC population
14-Day Positivity Rate (6/22):	1.1% of tests performed in BC
Hosp. Vaccine Breakthrough:	5*
Vaccine Breakthrough Deaths:	4*

Table 1: Key Indicators of Disease Spread		
Indicator	Last 2 Weeks	Governor DeWine's Target
Incidence per 100,000 population	23.0 per 100,000	50 per 100,000
Cumulative Case Count	88 cases through 14 days	191.6 through 14 days
Daily Average of new cases	6.3 per day through 14 days	13.7 per day through 14 days

Figure 1. Reported Cases of COVID-19 by Date of Event*



All figures show reported cases of COVID-19 in Butler County as of 1700 EDT 06/29/2021. Due to delays in reporting, the numbers of confirmed and probable cases on all figures are subject to change between reports and confirmed and probable case counts are likely to increase. *This should not be assumed to be the total disease burden of COVID-19 in Butler County only those that have been laboratory confirmed OR meet ODH probable case criteria AND reported to Public Health.

*Data is provisional – only confirmed or probable COVID-19 cases are included in counts. Report reflects time period since the introduction of SARS-CoV-2 into humans, measured in days. Data accessed from the Ohio Disease Reporting System (ODRS) on 06/29/2021 at 1700 EST.

**Deaths are now reconciled to the Ohio Department of Health's available data to avoid discrepancies between the state and local numbers. ODH's protocol has changed to avoid reconciliation errors and now only includes those deaths that have been reconciled with Vital statistics and may not match what has been reported to the CDC which are provisional numbers. This is a lagging indicator and will be multiple weeks behind.

Vaccination numbers were collected 1200 EDT 6/30/2021 from ODH COVID-19 Dashboard and Innovate Ohio Platform. Vaccinations are considered started on the day an individual receives first dose of a COVID-19 vaccine. Vaccinations are considered completed on the day an individual receives the final recommended dose of a vaccine.

#Maps created by ODH on 6/30/2021.

Figure 2. Cumulative Count of Cases of COVID-19 Reported by day previous two weeks

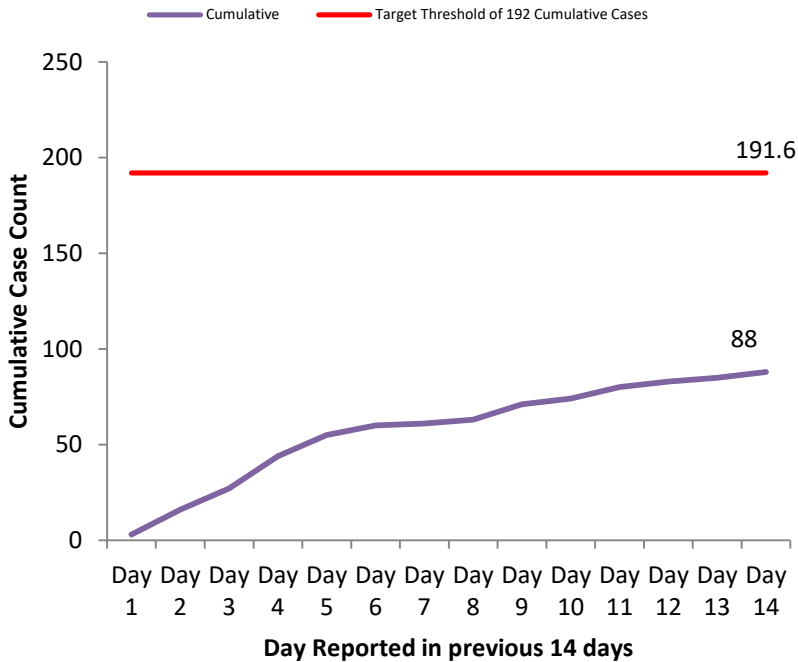


Figure 3. Cases per 100,000 population Reported in 2021

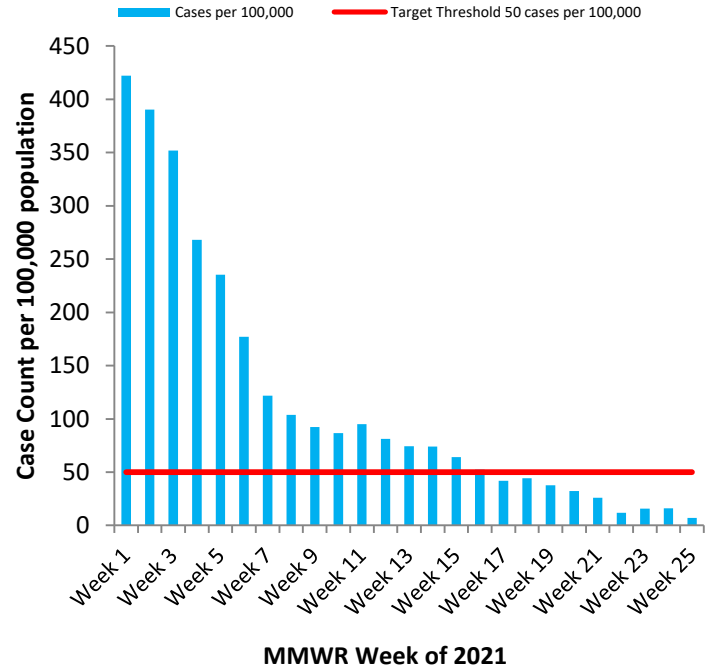


Table 2: Total Reported* Cases by ZIP Code

ZIP Code	Number of Cases	Change from previous Report	Incidence per 100,000 thru 06/12	% of Confirmed Cases
45011	6844	↑43 (0.6%) From 6801	9822.5	17.7%
45013	5204	↑24 (0.5%) from 5180	9891.1	13.4%
45044	5158	↑21 (0.4%) from 5137	9764.9	13.3%
45069	5095	↑54 (1.1%) from 5041	10385.2	13.2%
45014	4948	↑31 (0.6%) from 4917	11266.7	12.8%
45056	3266	↑37 (1.1%) from 3229	12079.3	8.4%
45042	2564	↑ 8 (0.3%) from 2556	9693.4	6.6%
45067	1543	↑9 (0.6%) from 1534	11102.3	4.0%
45050	1201	↑9(0.8%) from 1192	14050.1	3.1%
45015	1017	↑4 (0.4%) from 1013	8448.2	2.6%
45241	538	↑1 (0.2%) from 537		1.4%
45053	327	↑3 (0.9%) from 324	9561.4	0.8%
45064	150	↑3 (2.0%) from 147		0.4%
45246	60	0 (0.0%) from 60		0.2%
45062	57	↑1 (1.8%) from 56		0.1%
Cases lacking zip code information or from zip codes with too few cases	762	-	-	2.0%
Butler County (inclusive)	38,734	↑230 (0.6%) from 38,504	10,109.8	100%

Zip-codes not calculated have most of their population outside of Butler County. Rate given for comparison by population and will be higher than the actual amount. Zip-codes with too few cases have been removed for privacy concerns.

Red indicates zip codes where the percentage increase is greater than the increase from the previous 2 week period.

All figures show reported cases of COVID-19 in Butler County as of 1700 EDT 06/29/2021. Due to delays in reporting, the numbers of confirmed and probable cases on all figures are subject to change between reports and confirmed and probable case counts are likely to increase. *This should not be assumed to be the total disease burden of COVID-19 in Butler County only those that have been laboratory confirmed OR meet ODH probable case criteria AND reported to Public Health.

*Data is provisional – only confirmed or probable COVID-19 cases are included in counts. Report reflects time period since the introduction of SARS-CoV-2 into humans, measured in days. Data accessed from the Ohio Disease Reporting System (ODRS) on 06/29/2021 at 1700 EST.

**Deaths are now reconciled to the Ohio Department of Health’s available data to avoid discrepancies between the state and local numbers. ODH’s protocol has changed to avoid reconciliation errors and now only includes those deaths that have been reconciled with Vital statistics and may not match what has been reported to the CDC which are provisional numbers. This is a lagging indicator and will be multiple weeks behind.

Vaccination numbers were collected 1200 EDT 6/30/2021 from ODH COVID-19 Dashboard and Innovate Ohio Platform. Vaccinations are considered started on the day an individual receives first dose of a COVID-19 vaccine. Vaccinations are considered completed on the day an individual receives the final recommended dose of a vaccine.

#Maps created by ODH on 6/30/2021.

Table 3. New Reports by MMWR Week, 2020-21

MMWR Week	End of Week	New Cases by MMWR Report	New Hospitalizations	New Verified Deaths**
11	3/14	6	1	0
12	3/21	10	3	0
13	3/28	11	6	0
14	4/4	44	18	3
15	4/11	50	16	1
16	4/18	43	10	2
17	4/25	55	19	5
18	5/2	99	16	1
19	5/9	131	18	7
20	5/16	134	17	4
21	5/23	183	26	8
22	5/30	111	12	7
23	6/6	113	16	1
24	6/13	89	10	1
25	6/20	116	13	1
26	6/27	167	19	7
27	7/4	198	10	6
28	7/11	286	18	0
29	7/18	260	26	3
30	7/25	269	12	4
31	8/1	274	9	3
32	8/8	242	17	2
33	8/15	264	14	3
34	8/22	263	14	7
35	8/29	547	24	9
36	9/5	767	20	8
37	9/12	492	21	8
38	9/19	364	20	4
39	9/26	369	17	10
40	10/3	499	17	5
41	10/10	583	26	6
42	10/17	674	38	10
43	10/24	760	44	8
44	10/31	905	61	6
45	11/7	1140	68	18
46	11/14	1526	56	13
47	11/21	1784	71	29
48	11/28	2046	77	30
49	12/05	2298	68	28
50	12/12	2661	72	32
51	12/19	2017	76	37
52	12/26	1425	53	37
53	1/2	1694	60	43
1	1/9	1625	49	25
2	1/16	1585	57	24
3	1/23	1431	36	29
4	1/30	1177	45	20
5	2/6	1059	59	15
6	2/13	828	40	14
7	2/20	680	25	11
8	2/27	556	16	8
9	3/06	427	13	4
10	3/13	322	10	3
11	3/20	345	24	3
12	3/27	326	13	5
13	4/3	270	20	6
14	4/10	316	25	5
15	4/17	287	15	5
16	4/24	270	16	4
17	5/1	213	9	1

All figures show reported cases of COVID-19 in Butler County as of 1700 EDT 06/29/2021. Due to delays in reporting, the numbers of confirmed and probable cases on all figures are subject to change between reports and confirmed and probable case counts are likely to increase. *This should not be assumed to be the total disease burden of COVID-19 in Butler County only those that have been laboratory confirmed OR meet ODH probable case criteria AND reported to Public Health.

**Data is provisional – only confirmed or probable COVID-19 cases are included in counts. Report reflects time period since the introduction of SARS-CoV-2 into humans, measured in days. Data accessed from the Ohio Disease Reporting System (ODRS) on 06/29/2021 at 1700 EST.

**Deaths are now reconciled to the Ohio Department of Health's available data to avoid discrepancies between the state and local numbers. ODH's protocol has changed to avoid reconciliation errors and now only includes those deaths that have been reconciled with Vital statistics and may not match what has been reported to the CDC which are provisional numbers. This is a lagging indicator and will be multiple weeks behind.

Vaccination numbers were collected 1200 EDT 6/30/2021 from ODH COVID-19 Dashboard and Innovate Ohio Platform. Vaccinations are considered started on the day an individual receives first dose of a COVID-19 vaccine. Vaccinations are considered completed on the day an individual receives the final recommended dose of a vaccine.

#Maps created by ODH on 6/30/2021.

Table 3. New Reports by MMWR Week 2020-21 (Continued)				
MMWR Week	End of Week	New Cases by MMWR Report	New Hospitalizations	New Verified Deaths
18	5/8	162	11	1
19	5/15	198	18	0
20	5/22	149	8	2
21	5/29	130	9	6
22	6/5	65	6	0
23	6/12	112	6	1
24	6/19	113	5	1
25	6/26	119	5	1

Figure 4. New Hospitalizations of Butler County Residents by Admission Date, 2020-21*

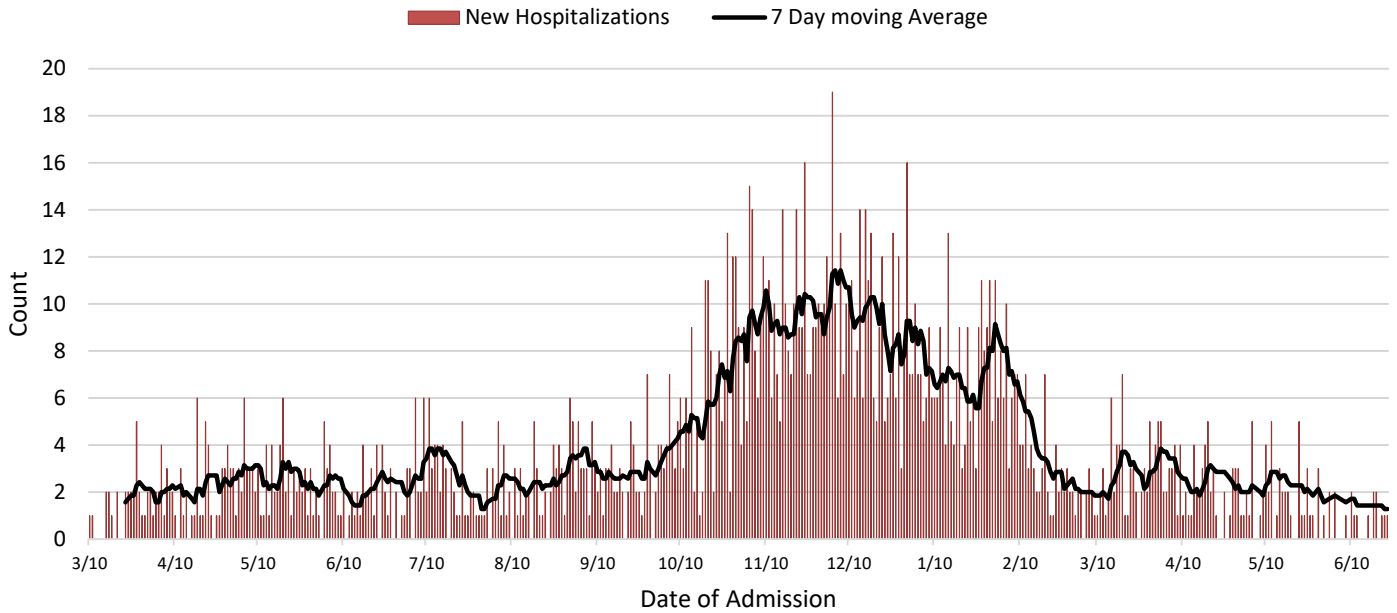
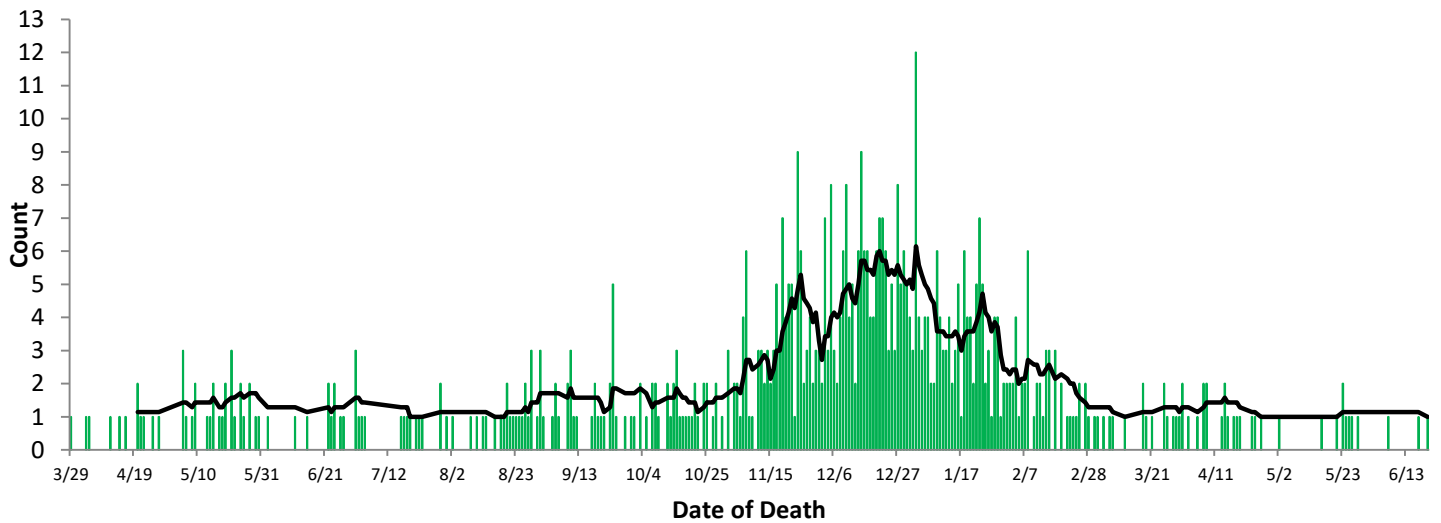


Figure 5. Confirmed COVID-19 Deaths by date of death, 2020-21**



at 1700 EST.

Deaths are now reconciled to the Ohio Department of Health's available data to avoid discrepancies between the state and local numbers. ODH's protocol has changed to avoid reconciliation errors and now only includes those deaths that have been reconciled with Vital statistics and may not match what has been reported to the CDC which are provisional numbers. **This is a lagging indicator and will be multiple weeks behind.

Vaccination numbers were collected 1200 EDT 6/30/2021 from ODH COVID-19 Dashboard and Innovate Ohio Platform. Vaccinations are considered started on the day an individual receives first dose of a COVID-19 vaccine. Vaccinations are considered completed on the day an individual receives the final recommended dose of a vaccine.

#Maps created by ODH on 6/30/2021.

Figure 6. Butler County Data analysis performed by Cincinnati Children's Hospital Week of 6/23 last sent report*

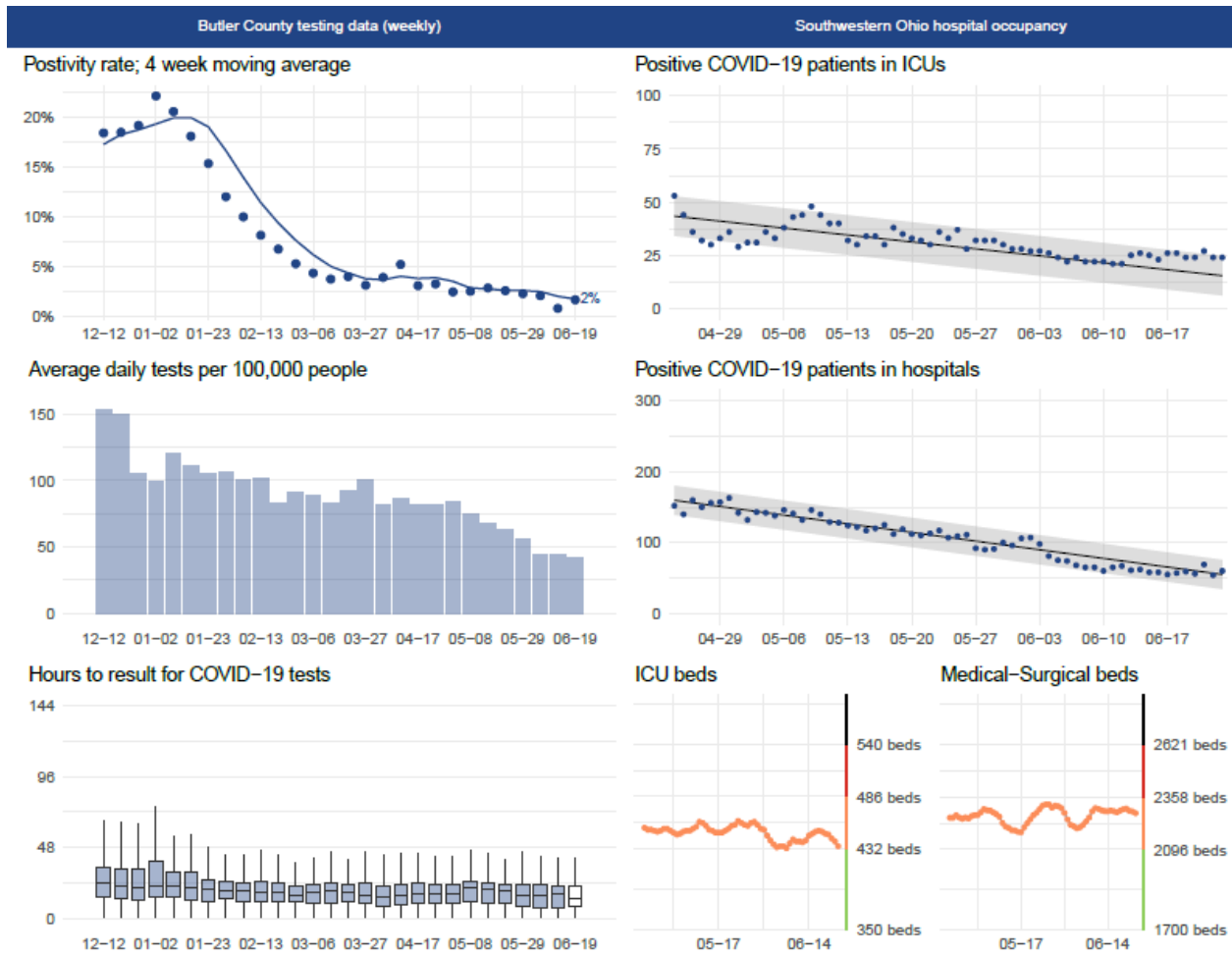
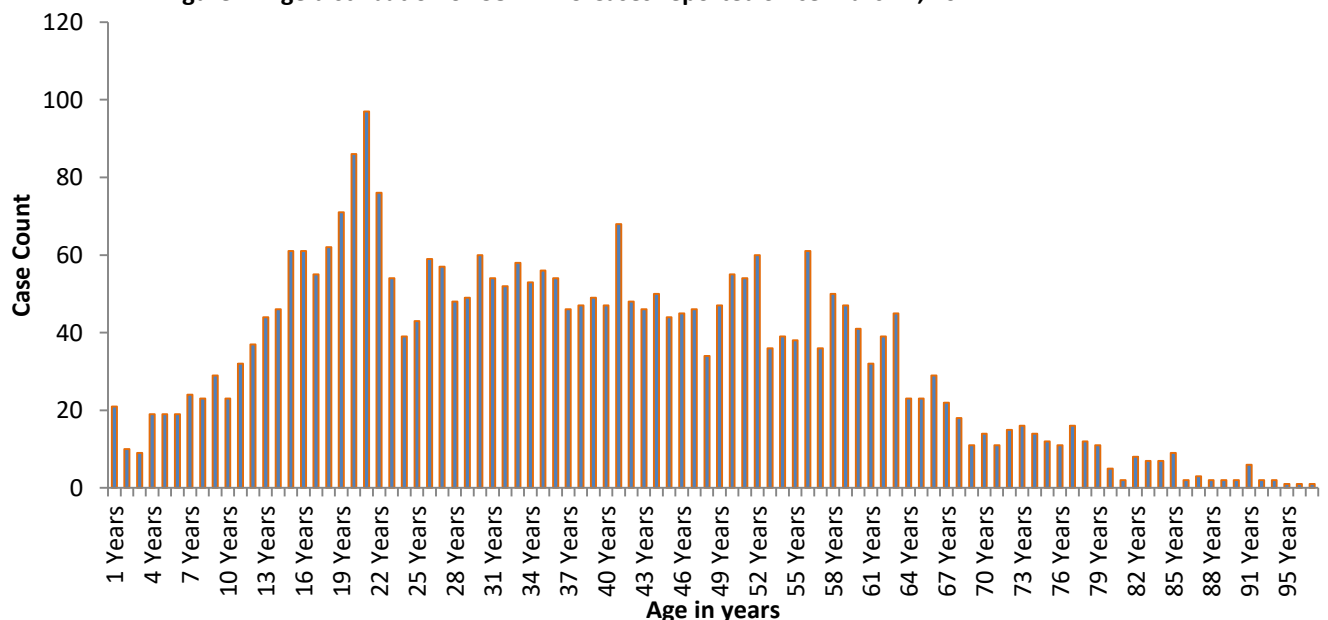


Figure 7. Age distribution of COVID-19 Cases reported Since March 1, 2021



All figures show reported cases of COVID-19 in Butler County as of the week ending 6/23/2021. Data is subject to change between reports and is likely to increase. *This should not be assumed to be the total disease burden of COVID-19 in Butler County only those that have been laboratory confirmed OR meet ODH probable case criteria AND reported to Public Health.

*Data is provisional – only confirmed or probable COVID-19 cases are included in counts. Report reflects time period since the introduction of SARS-CoV-2 into humans, measured in days. Data accessed from the Ohio Disease Reporting System (ODRS) on 06/29/2021 at 1700 EST.

**Deaths are now reconciled to the Ohio Department of Health's available data to avoid discrepancies between the state and local numbers. ODH's protocol has changed to avoid reconciliation errors and now only includes those deaths that have been reconciled with Vital statistics and may not match what has been reported to the CDC which are provisional numbers. This is a lagging indicator and will be multiple weeks behind.

Vaccination numbers were collected 1200 EDT 6/30/2021 from ODH COVID-19 Dashboard and Innovate Ohio Platform. Vaccinations are considered started on the day an individual receives first dose of a COVID-19 vaccine. Vaccinations are considered completed on the day an individual receives the final recommended dose of a vaccine.

#Maps created by ODH on 6/30/2021.

Figure 8. Cases by Date of Event Since March 1, 2021

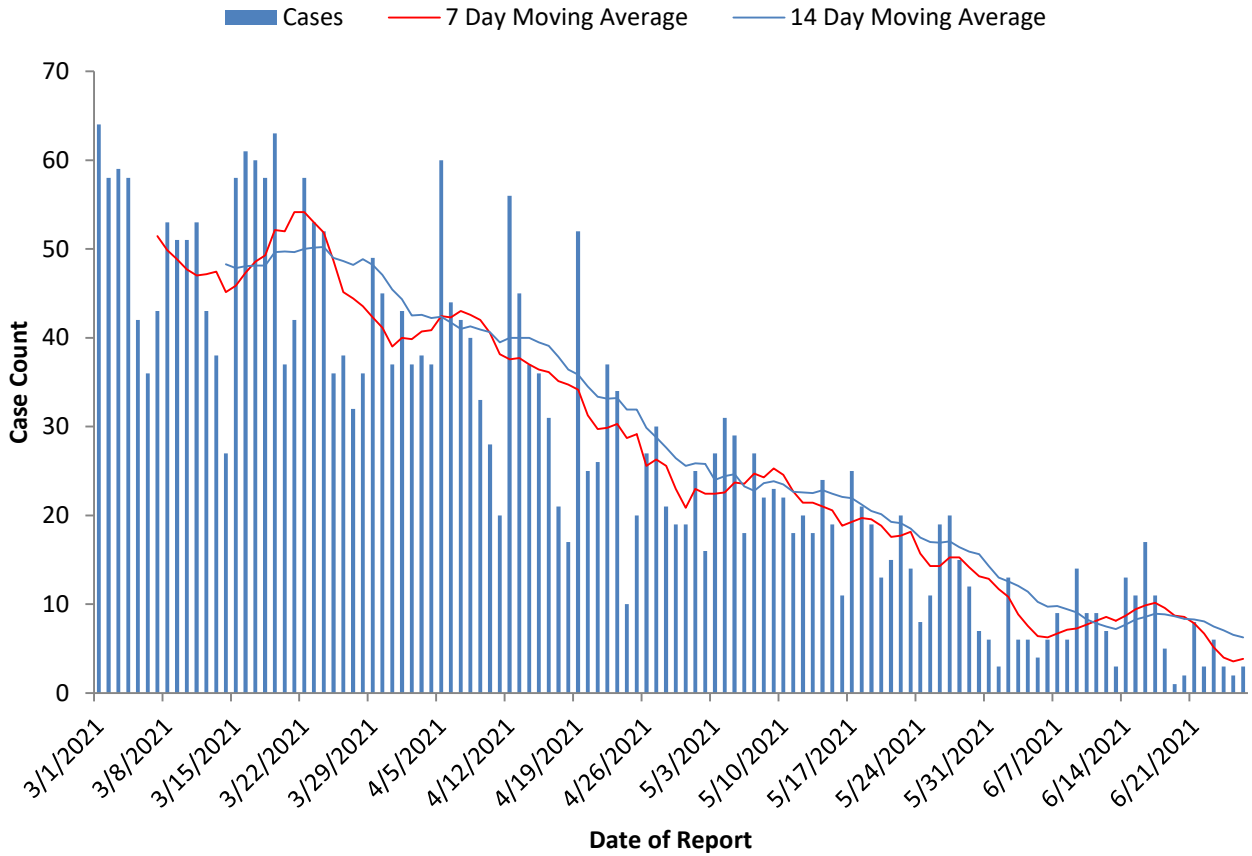
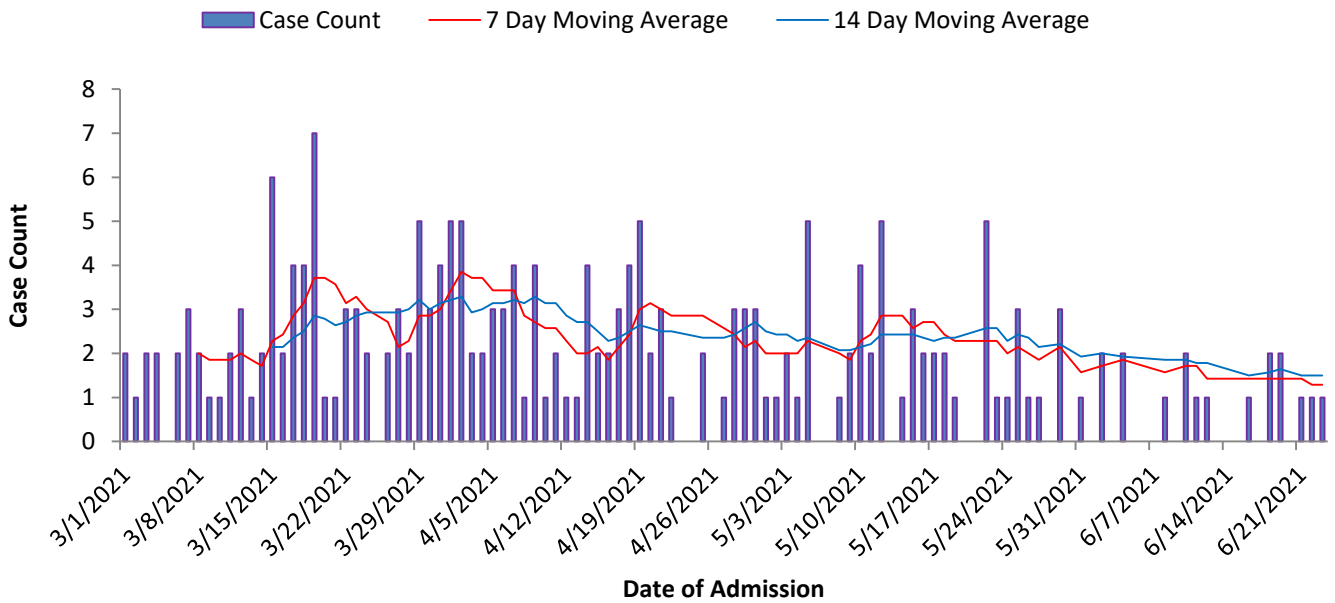


Figure 9. Hospitalizations Since March 1, 2021



Case counts are provisional. Only confirmed or probable cases are included in the daily report. Probable cases are included in the daily report, but are not included in the daily case counts from the Ohio disease reporting system (ODHS) on 6/22/2021 at 1700 EST.

Deaths are now reconciled to the Ohio Department of Health's available data to avoid discrepancies between the state and local numbers. ODH's protocol has changed to avoid reconciliation errors and now only includes those deaths that have been reconciled with Vital statistics and may not match what has been reported to the CDC which are provisional numbers. **This is a lagging indicator and will be multiple weeks behind.

Vaccination numbers were collected 1200 EDT 6/30/2021 from ODH COVID-19 Dashboard and Innovate Ohio Platform. Vaccinations are considered started on the day an individual receives first dose of a COVID-19 vaccine. Vaccinations are considered completed on the day an individual receives the final recommended dose of a vaccine.

#Maps created by ODH on 6/30/2021.

COVID-19 Vaccinations in Butler County and Ohio

Table 4. Vaccination Status by Age Group in Butler County and Ohio

Age Group	Ohio		Butler County	
	Vaccine Started	Vaccine Completed	Vaccine Started	Vaccine Completed
0-19	12.8%	12.6%	10.5%	10.6%
20-29	35.2%	39.5%	31.8%	35.6%
30-39	46.5%	46.5%	42.4%	42.7%
40-49	53.1%	52.8%	49.2%	49.0%
50-59	60.9%	61.1%	57.0%	57.3%
60-64	71.5%	71.5%	67.6%	67.7%
65-69	78.3%	79.7%	74.5%	76.1%
70-74	84.5%	84.4%	80.8%	80.8%
75-79	79.5%	80.9%	75.8%	77.3%
80+	77.0%	78.6%	73.7%	75.1%

% of Butler County that has received at least one dose: 45.1%

% of Butler County with vaccine completed: 41.7%

% of Ohio that has received at least one dose: 47.6%

% of Ohio with vaccine completed: 44.3%

Figure 10. % of Ohio Population Vaccinated[#]

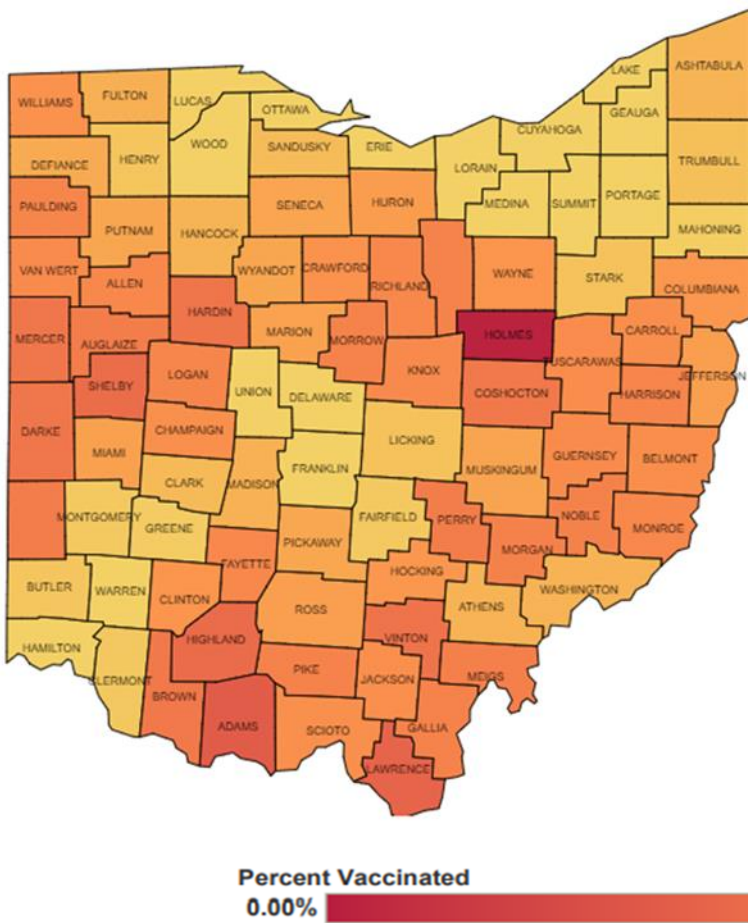
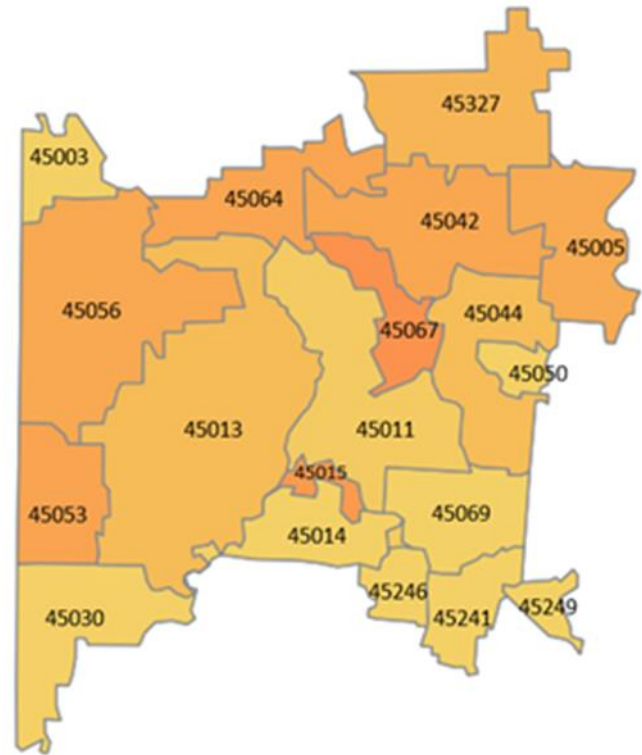


Figure 11. % of Butler County Vaccinated[#]



All figures show reported cases of COVID-19 in Butler County as of 1700 EDT 06/29/2021. Due to delays in reporting, the numbers of confirmed and probable cases on all figures are subject to change between reports and confirmed and probable case counts are likely to increase. *This should not be assumed to be the total disease burden of COVID-19 in Butler County only those that have been laboratory confirmed OR meet ODH probable case criteria AND reported to Public Health.

*Data is provisional – only confirmed or probable COVID-19 cases are included in counts. Report reflects time period since the introduction of SARS-CoV-2 into humans, measured in days. Data accessed from the Ohio Disease Reporting System (ODRS) on 06/29/2021 at 1700 EST.

**Deaths are now reconciled to the Ohio Department of Health's available data to avoid discrepancies between the state and local numbers. ODH's protocol has changed to avoid reconciliation errors and now only includes those deaths that have been reconciled with Vital statistics and may not match what has been reported to the CDC which are provisional numbers. This is a lagging indicator and will be multiple weeks behind.

Vaccination numbers were collected 1200 EDT 6/30/2021 from ODH COVID-19 Dashboard and Innovate Ohio Platform. Vaccinations are considered started on the day an individual receives first dose of a COVID-19 vaccine. Vaccinations are considered completed the day an individual receives the final recommended dose of a vaccine.

#Maps created by ODH on 6/30/2021.