

Butler County General Health District's 71st COVID-19 Update (6/12/2021)

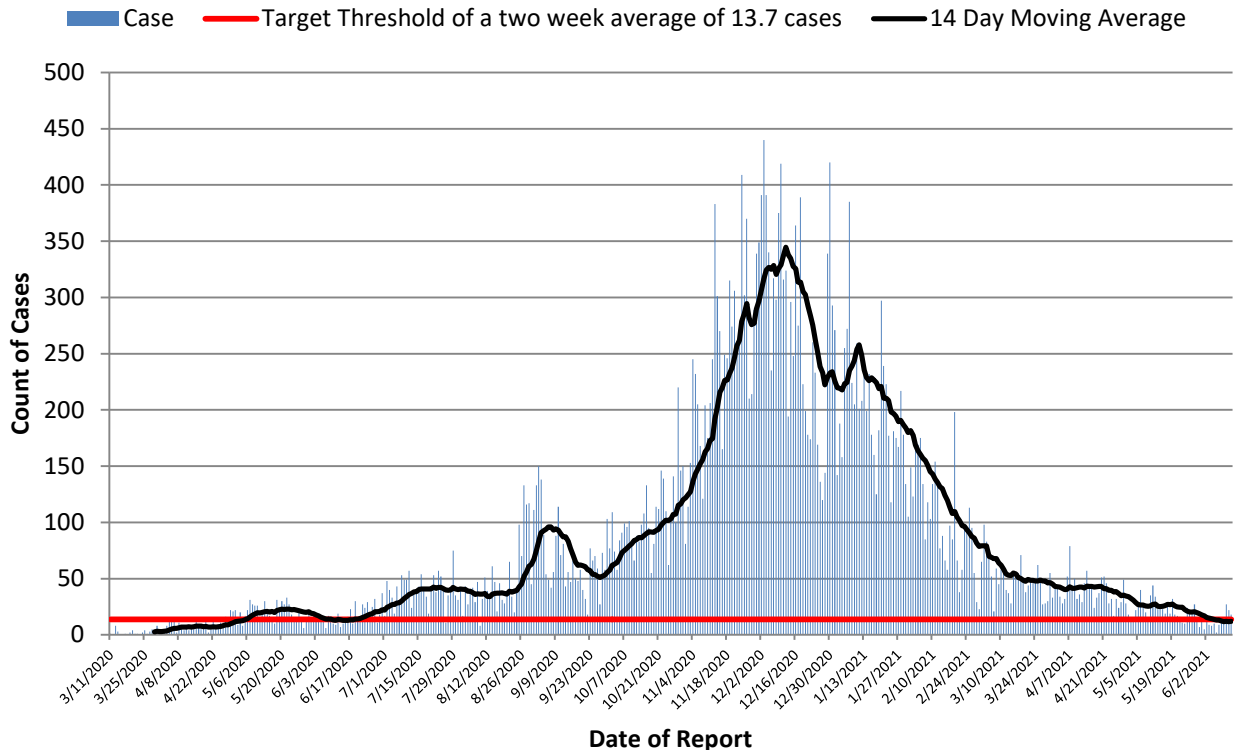
Confirmed and Probable COVID-19 Cases Reported to Butler County*

Butler County Residents, 2020-21

Total # of Cases (06/12):	38,504*
ODH verified Deaths (06/12):	604**
Hospitalizations (06/12):	1,704
ICU admissions (06/12):	151
First Case Reported:	3/11/2020
Last Case Reported (so far):	6/12/2021
Confirmed Cases:	34,356
Probable Cases:	4,148
Age Range:	<1-103
Median Age:	40
Mean Age:	41.0
Incidence (thru 06/12):	10,049.7 per 100,000
Prevalence (thru 06/12):	10.0% of BC population
14-Day Positivity Rate (6/8):	2.0% of tests performed in BC
Hosp. Vaccine Breakthrough:	5*
Vaccine Breakthrough Deaths:	3*

Table 1: Key Indicators of Disease Spread		
Indicator	Last 2 Weeks	Governor DeWine's Target
Incidence per 100,000 population	44.4 per 100,000	50 per 100,000
Cumulative Case Count	170 through 14 days	191.6 through 14 days
Daily Average of new cases	12.1 per day through 14 days	13.7 per day through 14 days

Figure 1. Reported Cases of COVID-19 by Date of Report*



All figures show reported cases of COVID-19 in Butler County as of 1700 EDT 06/12/2021. Due to delays in reporting, the numbers of confirmed and probable cases on all figures are subject to change between reports and confirmed and probable case counts are likely to increase. **This should not be assumed to be the total disease burden of COVID-19 in Butler County only those that have been laboratory confirmed OR meet ODH probable case criteria AND reported to Public Health.

*Data is provisional – only confirmed or probable COVID-19 cases are included in counts. Report reflects time period since the introduction of SARS-CoV-2 into humans, measured in days. Data accessed from the Ohio Disease Reporting System (ODRS) on 06/12/2021 at 1700 EST.

**Deaths are now reconciled to the Ohio Department of Health's available data to avoid discrepancies between the state and local numbers. ODH's protocol has changed to avoid reconciliation errors and now only includes those deaths that have been reconciled with Vital statistics and may not match what has been reported to the CDC which are provisional numbers. This is a lagging indicator and will be multiple weeks behind.

Vaccine data was accessed from Ohio Impact SIS on 6/14/2021 at 600 EST. ##Maps created by ODH on 6/14/2021.

Figure 2. Cumulative Count of Cases of COVID-19 Reported by day previous two weeks

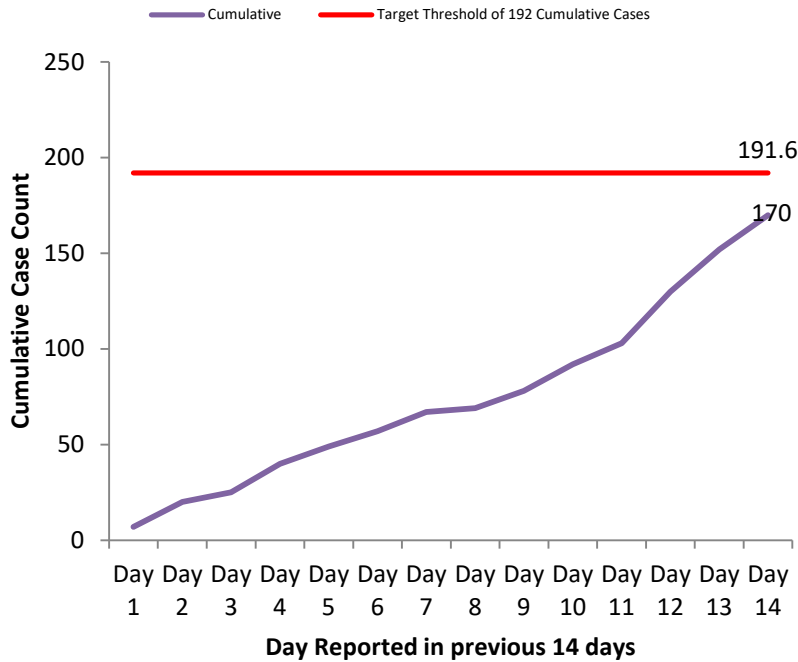


Figure 3. Cases per 100,000 population Reported in 2021

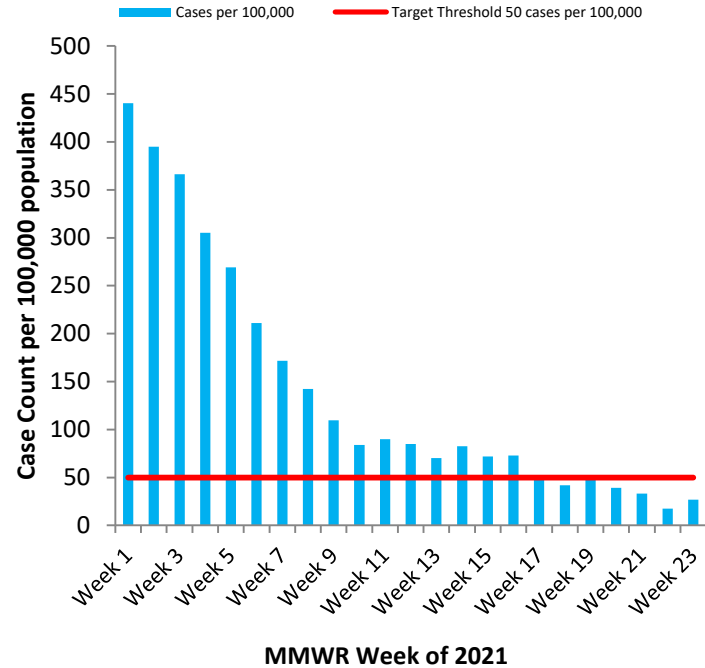


Table 2: Total Reported* Cases by ZIP Code

ZIP Code	Number of Cases	Change from previous Report	Incidence per 100,000 thru 06/12	% of Confirmed Cases
45011	6801	↑22 (0.3%) From 6779	9760.8	17.7%
45013	5180	↑6 (0.1%) from 5174	9845.5	13.5%
45044	5137	↑4 (0.1%) from 5133	9725.1	13.3%
45069	5041	↑10 (0.2%) from 5031	10275.2	13.1%
45014	4917	↑12 (0.2%) from 4905	11196.1	12.8%
45056	3229	↑15 (0.5%) from 3214	11942.5	8.4%
45042	2556	↑ 16 (0.6%) from 2540	9663.2	6.6%
45067	1534	↑ 2 (0.1%) from 1532	11037.6	4.0%
45050	1192	↑5(0.4%) from 1187	13944.8	3.1%
45015	1013	↑1 (0.1%) from 1012	8415.0	2.6%
45241	537	↓31 (5.5%) from 568		1.4%
45053	324	↑ 2 (0.6%) from 322	9473.7	0.8%
45064	147	↑1 (0.7%) from 146		0.4%
45246	60	↑1 (0.7%) from 59		0.2%
45062	56	0 (0%) from 56		0.1%
Cases lacking zip code information or from zip codes with too few cases	780	-	-	2.1%
Butler County (inclusive)	38,504	↑ (0.1%) from 38468	10,049.7	100%

Zip-codes not calculated have most of their population outside of Butler County. Rate given for comparison by population and will be higher than the actual amount. Zip-codes with too few cases have been removed for privacy concerns.

Red indicates zip codes where the percentage increase is greater than the increase from the previous week.

All figures show reported cases of COVID-19 in Butler County as of 1700 EDT 06/12/2021. Due to delays in reporting, the numbers of confirmed and probable cases on all figures are subject to change between reports and confirmed and probable case counts are likely to increase. **This should not be assumed to be the total disease burden of COVID-19 in Butler County only those that have been laboratory confirmed OR meet ODH probable case criteria AND reported to Public Health.

*Data is provisional – only confirmed or probable COVID-19 cases are included in counts. Report reflects time period since the introduction of SARS-CoV-2 into humans, measured in days. Data accessed from the Ohio Disease Reporting System (ODRS) on 06/12/2021 at 1700 EST.

**Deaths are now reconciled to the Ohio Department of Health's available data to avoid discrepancies between the state and local numbers. ODH's protocol has changed to avoid reconciliation errors and now only includes those deaths that have been reconciled with Vital statistics and may not match what has been reported to the CDC which are provisional numbers. This is a lagging indicator and will be multiple weeks behind.

Vaccine data was accessed from Ohio Impact SIS on 6/14/2021 at 600 EST. #IMaps created by ODH on 6/14/2021.

Table 3. New Reports by MMWR Week, 2020

MMWR Week	End of Week	New Cases Reported	New Hospitalizations	New Confirmed Deaths**
11	3/14	6	1	0
12	3/21	10	3	0
13	3/28	11	6	0
14	4/4	44	18	3
15	4/11	50	16	1
16	4/18	43	10	2
17	4/25	55	19	5
18	5/2	99	16	1
19	5/9	131	18	7
20	5/16	134	17	4
21	5/23	183	26	8
22	5/30	111	12	7
23	6/6	113	16	1
24	6/13	89	10	1
25	6/20	116	13	1
26	6/27	167	19	7
27	7/4	198	10	6
28	7/11	286	18	0
29	7/18	260	26	3
30	7/25	269	12	4
31	8/1	274	9	3
32	8/8	242	17	2
33	8/15	264	14	3
34	8/22	263	14	7
35	8/29	545	24	9
36	9/5	765	18	8
37	9/12	492	20	8
38	9/19	364	17	4
39	9/26	370	15	10
40	10/3	499	14	5
41	10/10	584	20	6
42	10/17	675	32	10
43	10/24	761	36	8
44	10/31	905	57	6
45	11/7	1140	68	18
46	11/14	1526	55	13
47	11/21	1784	70	29
48	11/28	2047	73	30
49	12/05	2298	68	28
50	12/12	2661	72	32
51	12/19	2017	76	37
52	12/26	1425	53	37
53	1/2	1694	60	43
1	1/9	1622	45	25
2	1/16	1585	49	23
3	1/23	1431	36	29
4	1/30	1177	45	20
5	2/6	1058	59	15
6	2/13	828	40	14
7	2/20	680	25	11
8	2/27	556	16	8
9	3/06	427	13	4
10	3/13	322	10	3
11	3/20	345	24	3
12	3/27	326	13	4
13	4/3	270	20	6
14	4/10	316	25	5
15	4/17	287	15	5
16	4/24	270	16	4
17	5/1	213	8	1
18	5/8	162	11	1
19	5/15	198	18	0
20	5/22	149	7	1
21	5/29	130	9	5
22	6/5	65	6	0

All figures show reported cases of COVID-19 in Butler County as of 1700 EDT 06/12/2021. Due to delays in reporting, the numbers of confirmed and probable cases on all figures are subject to change between reports and confirmed and probable case counts are likely to increase. **This should not be assumed to be the total disease burden of COVID-19 in Butler County only those that have been laboratory confirmed OR meet ODH probable case criteria AND reported to Public Health.

*Data is provisional – only confirmed or probable COVID-19 cases are included in counts. Report reflects time period since the introduction of SARS-CoV-2 into humans, measured in days. Data accessed from the Ohio Disease Reporting System (ODRS) on 06/12/2021 at 1700 EST.

**Deaths are now reconciled to the Ohio Department of Health's available data to avoid discrepancies between the state and local numbers. ODH's protocol has changed to avoid reconciliation errors and now only includes those deaths that have been reconciled with Vital statistics and may not match what has been reported to the CDC which are provisional numbers. This is a lagging indicator and will be multiple weeks behind.

Vaccine data was accessed from Ohio Impact SIS on 6/14/2021 at 600 EST. #MMaps created by ODH on 6/14/2021.

Figure 4. New Hospitalizations of Butler County Residents by Admission Date, 2020-21*

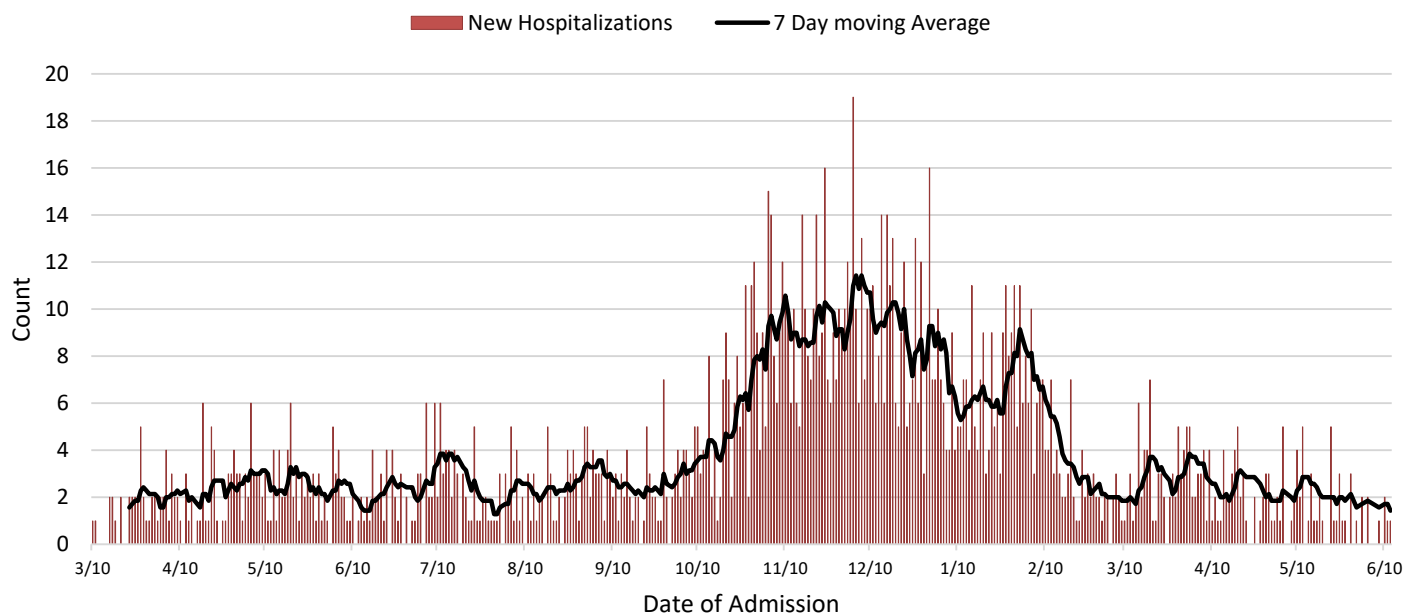
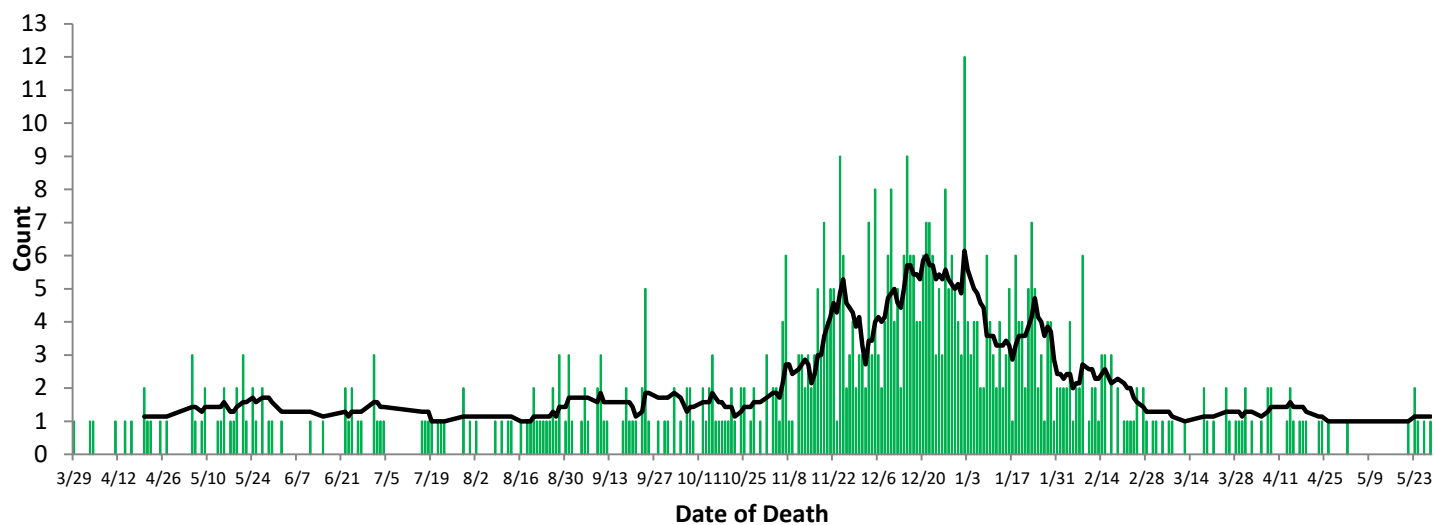


Figure 5. Confirmed COVID-19 Deaths by date of death, 2020-21**



All figures show reported cases of COVID-19 in Butler County as of 1700 EDT 06/12/2021. Due to delays in reporting, the numbers of confirmed and probable cases on all figures are subject to change between reports and confirmed and probable case counts are likely to increase. **This should not be assumed to be the total disease burden of COVID-19 in Butler County only those that have been laboratory confirmed OR meet ODH probable case criteria AND reported to Public Health.

*Data is provisional – only confirmed or probable COVID-19 cases are included in counts. Report reflects time period since the introduction of SARS-CoV-2 into humans, measured in days. Data accessed from the Ohio Disease Reporting System (ODRS) on 06/12/2021 at 1700 EST.

**Deaths are now reconciled to the Ohio Department of Health's available data to avoid discrepancies between the state and local numbers. ODH's protocol has changed to avoid reconciliation errors and now only includes those deaths that have been reconciled with Vital statistics and may not match what has been reported to the CDC which are provisional numbers. This is a lagging indicator and will be multiple weeks behind.

Vaccine data was accessed from Ohio Impact SIS on 6/14/2021 at 600 EST. ##Maps created by ODH on 6/14/2021.

Figure 6. Butler County Data analysis performed by Cincinnati Children's Hospital Week of 5/27 last sent report*

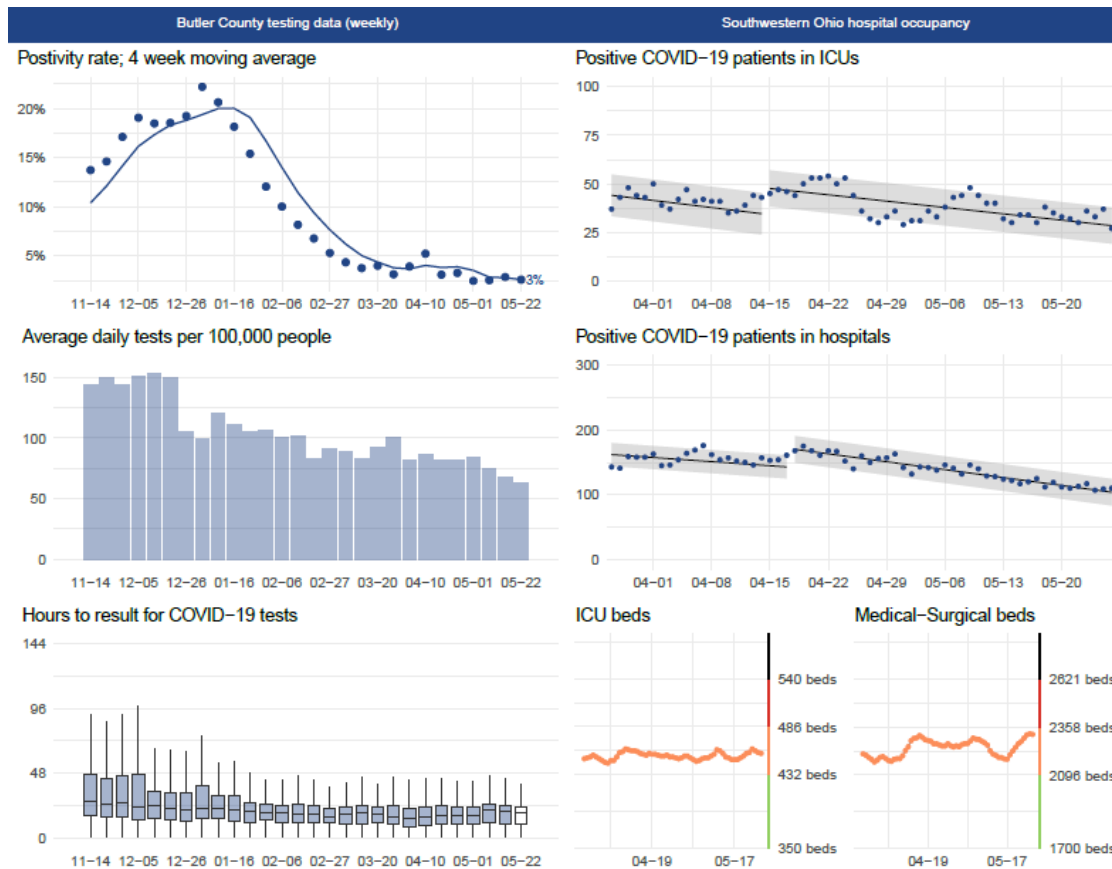
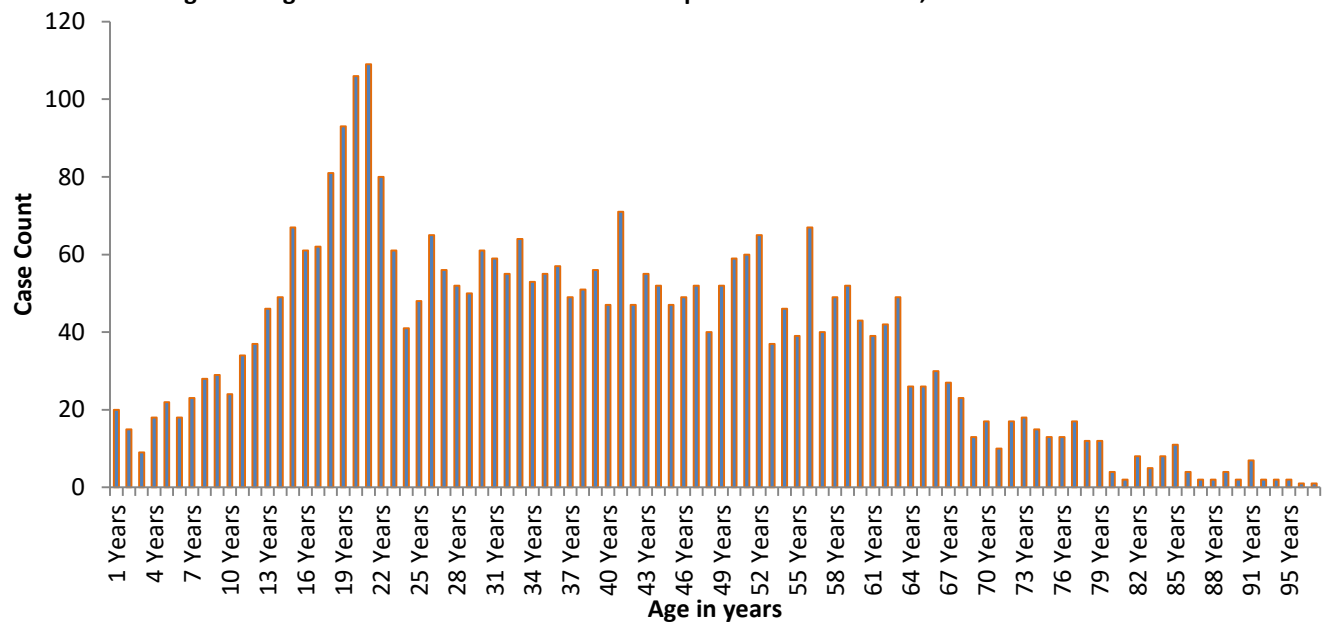


Figure 7. Age distribution of COVID-19 Cases reported Since March 1, 2021



All figures show reported cases of COVID-19 in Butler County as of 1700 EDT 06/12/2021. Due to delays in reporting, the numbers of confirmed and probable cases on all figures are subject to change between reports and confirmed and probable case counts are likely to increase. *This should not be assumed to be the total disease burden of COVID-19 in Butler County only those that have been laboratory confirmed OR meet ODH probable case criteria AND reported to Public Health.

*Data is provisional – only confirmed or probable COVID-19 cases are included in counts. Report reflects time period since the introduction of SARS-CoV-2 into humans, measured in days. Data accessed from the Ohio Disease Reporting System (ODRS) on 06/12/2021 at 1700 EST.

**Deaths are now reconciled to the Ohio Department of Health's available data to avoid discrepancies between the state and local numbers. ODH's protocol has changed to avoid reconciliation errors and now only includes those deaths that have been reconciled with Vital statistics and may not match what has been reported to the CDC which are provisional numbers. This is a lagging indicator and will be multiple weeks behind.

Vaccine data was accessed from Ohio Impact SIS on 6/14/2021 at 600 EST. ##Maps created by ODH on 6/14/2021.

Figure 8. Cases by Date of Report Since March 1, 2021

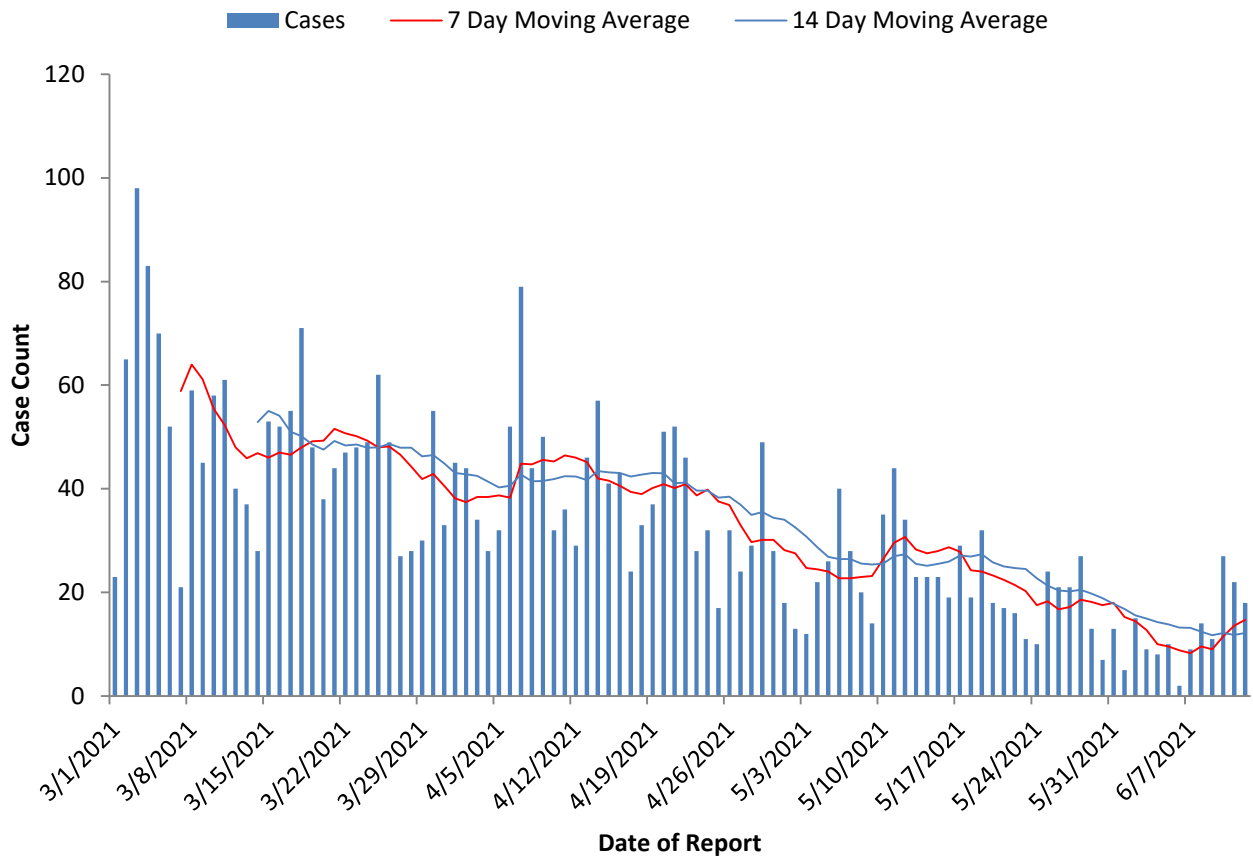
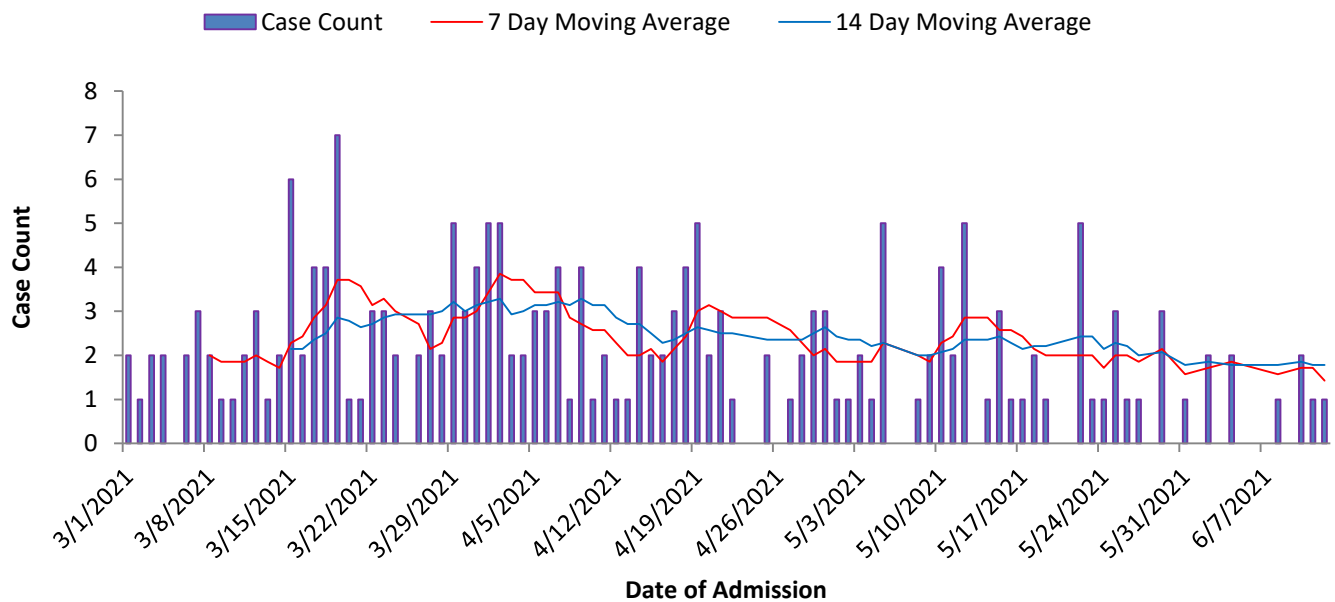


Figure 9. Hospitalizations Since March 1, 2021



All figures show reported cases of COVID-19 in Butler County as of 1700 EDT 06/12/2021. Due to delays in reporting, the numbers of confirmed and probable cases on all figures are subject to change between reports and confirmed and probable case counts are likely to increase. **This should not be assumed to be the total disease burden of COVID-19 in Butler County only those that have been laboratory confirmed OR meet ODH probable case criteria AND reported to Public Health.

*Data is provisional – only confirmed or probable COVID-19 cases are included in counts. Report reflects time period since the introduction of SARS-CoV-2 into humans, measured in days. Data accessed from the Ohio Disease Reporting System (ODRS) on 06/12/2021 at 1700 EST.

**Deaths are now reconciled to the Ohio Department of Health's available data to avoid discrepancies between the state and local numbers. ODH's protocol has changed to avoid reconciliation errors and now only includes those deaths that have been reconciled with Vital statistics and may not match what has been reported to the CDC which are provisional numbers. This is a lagging indicator and will be multiple weeks behind.

Vaccine data was accessed from Ohio Impact SIS on 6/14/2021 at 600 EST. ##Maps created by ODH on 6/14/2021.

COVID-19 Vaccinations in Butler County

Table 4. Vaccination Status by Age Group in Butler County and Ohio#

Age Group	Butler County	Ohio	Butler County	Ohio
	Vaccine Started		Vaccine Completed	
0-19	11.6%	11.7%	7.8%	8.3%
20-29	34.1%	38.3%	29.0%	32.9%
30-39	44.9%	45.4%	38.8%	39.9%
40-49	51.8%	51.8%	45.8%	46.3%
50-59	59.7%	60.1%	54.3%	55.0%
60-64	70.5%	70.7%	65.2%	65.8%
65-69	77.4%	79.0%	72.6%	74.6%
70-74	83.6%	83.4%	79.1%	79.2%
75-79	78.7%	80.3%	74.5%	76.2%
80+	76.3%	78.1%	72.6%	74.3%

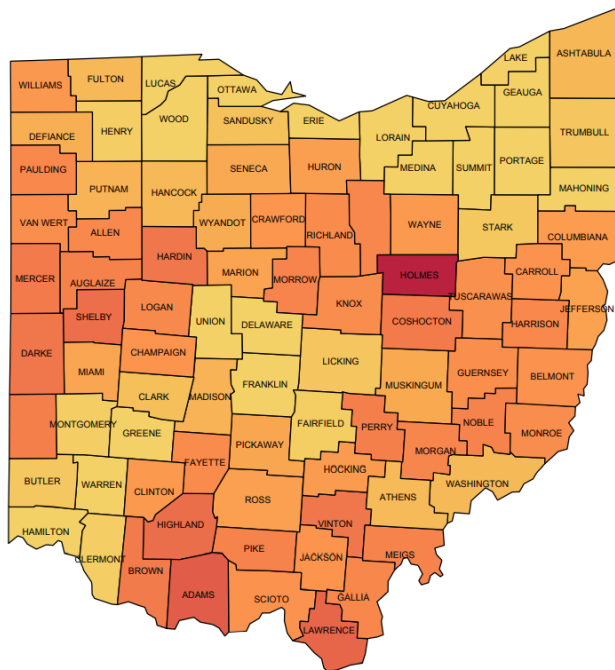
% of Butler County that has received at least one dose: 43.9%

% of Butler County with vaccine completed: 39.0%

% of Ohio that has received at least one dose: 46.6%

% of Ohio with vaccine completed: 42.0%

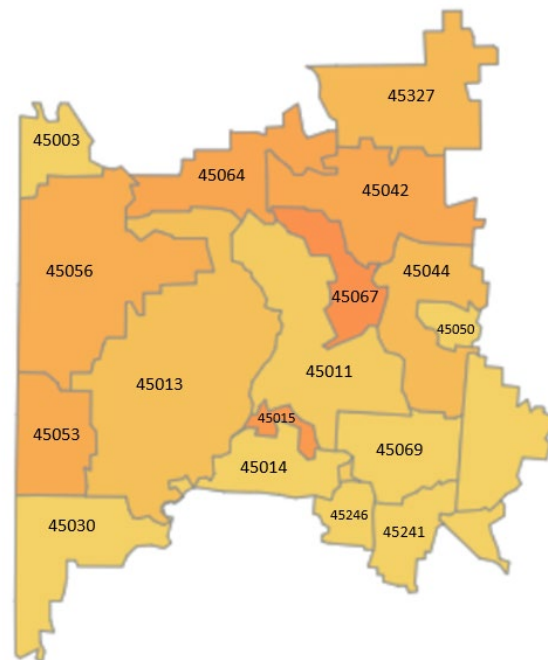
Figure 11. % of Butler County Vaccinated^{##}



Percent Vaccinated



Figure 10. % of Ohio Population Vaccinated^{##}



All figures show reported cases of COVID-19 in Butler County as of 1700 EDT 06/12/2021. Due to delays in reporting, the numbers of confirmed and probable cases on all figures are subject to change between reports and confirmed and probable case counts are likely to increase. **This should not be assumed to be the total disease burden of COVID-19 in Butler County only those that have been laboratory confirmed OR meet ODH probable case criteria AND reported to Public Health.

*Data is provisional – only confirmed or probable COVID-19 cases are included in counts. Report reflects time period since the introduction of SARS-CoV-2 into humans, measured in days. Data accessed from the Ohio Disease Reporting System (ODRS) on 06/12/2021 at 1700 EST.

**Deaths are now reconciled to the Ohio Department of Health's available data to avoid discrepancies between the state and local numbers. ODH's protocol has changed to avoid reconciliation errors and now only includes those deaths that have been reconciled with Vital statistics and may not match what has been reported to the CDC which are provisional numbers. This is a lagging indicator and will be multiple weeks behind.

Vaccine data was accessed from Ohio Impact SIS on 6/14/2021 at 600 EST. ##Maps created by ODH on 6/14/2021.