

Butler County General Health District's 70th COVID-19 Update (5/29/2021)

Confirmed and Probable COVID-19 Cases Reported to Butler County*

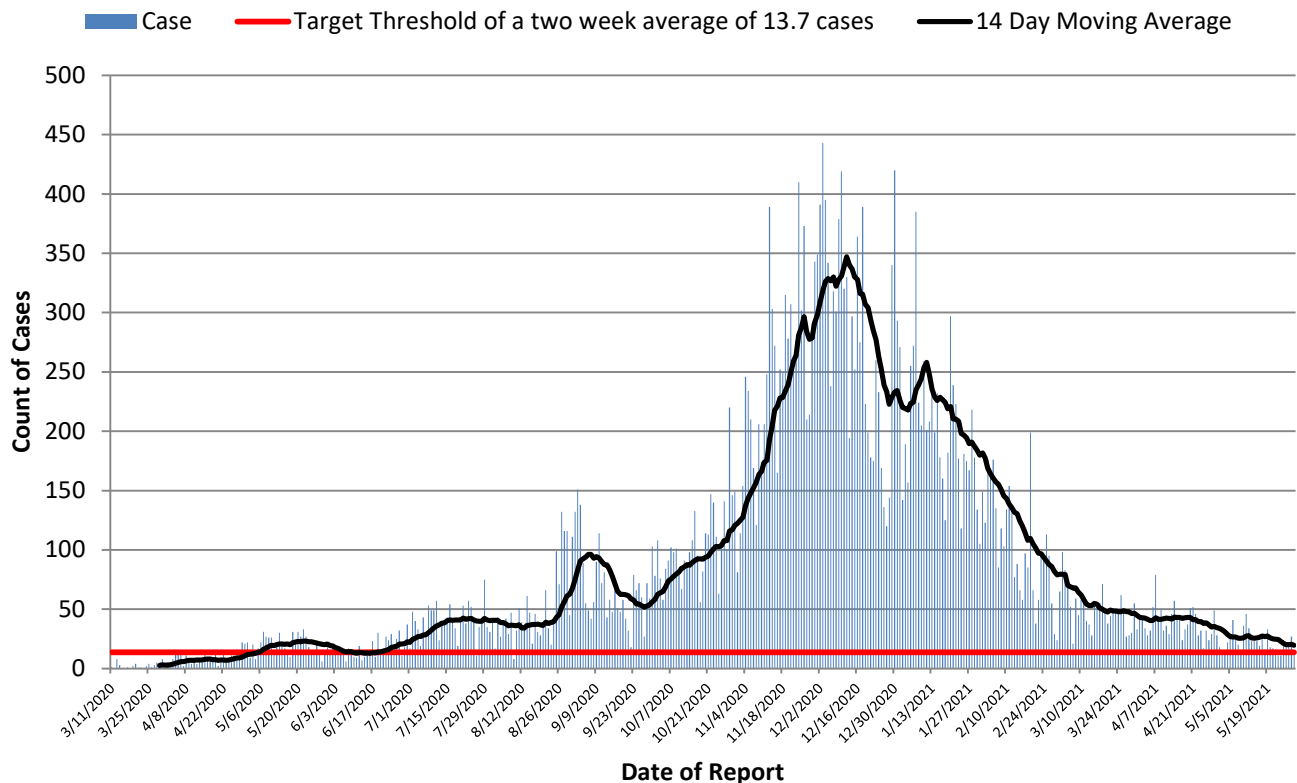
Butler County Residents, 2020-21

Total # of Cases (05/29):	38,468*
ODH verified Deaths (05/29):	596**
Hospitalizations (05/29):	1,637
ICU admissions (05/29):	143
First Case Reported:	3/11/2020
Last Case Reported (so far):	5/29/2021
Confirmed Cases:	34,400
Probable Cases:	4,068
Age Range:	<1-103
Median Age:	40
Mean Age:	40.9
Incidence (thru 05/29):	10,040.4 per 100,000
Prevalence (thru 05/29):	10.0% of BC population
14-Day Positivity Rate (5/31):	2.8% of tests performed in BC

In the following tables and figures, all threshold values are equivalent.

Table 1: Key Indicators of Disease Spread		
Indicator	Last 2 Weeks	Governor DeWine's Target
Incidence per 100,000 population	72.0 per 100,000	50 per 100,000
Cumulative Case Count	276 through 14 days	191.6 through 14 days
Daily Average of new cases	19.7 per day through 14 days	13.7 per day through 14 days

Figure 1. Reported Cases of COVID-19 by Date of Report*



All figures show reported cases of COVID-19 in Butler County as of 1700 EDT 05/29/2021. Due to delays in reporting, the numbers of confirmed and probable cases on all figures are subject to change between reports and confirmed and probable case counts are likely to increase. *This should not be assumed to be the total disease burden of COVID-19 in Butler County only those that have been laboratory confirmed OR meet ODH probable case criteria AND reported to Public Health.

**Data is provisional – only confirmed or probable COVID-19 cases are included in counts. Report reflects time period since the introduction of SARS-CoV-2 into humans, measured in days. Data accessed from the Ohio Disease Reporting System (ODRS) on 05/29/2021 at 1700 EST.

**Deaths are now reconciled to the Ohio Department of Health's available data to avoid discrepancies between the state and local numbers. ODH's protocol has changed to avoid reconciliation errors and now only includes those deaths that have been reconciled with Vital statistics and may not match what has been reported to the CDC which are provisional numbers. This is a lagging indicator and will be multiple weeks behind.

#Data collected from Ohio Impact-SIIS 05/31/2021 ## Maps created by the Ohio Department of Health on 5/31/2021

Figure 2. Cumulative Count of Cases of COVID-19 Reported by day previous two weeks

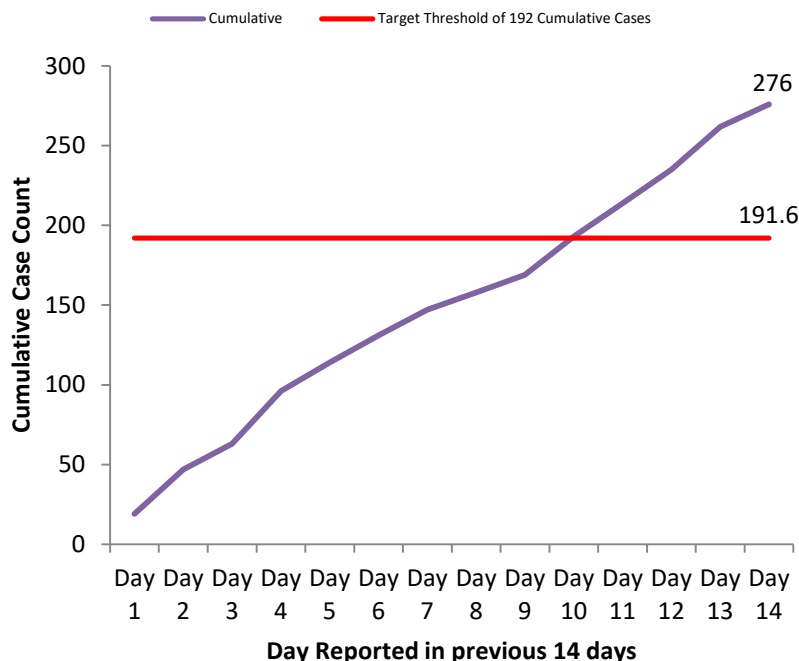


Figure 3. Cases per 100,000 population Reported in 2021

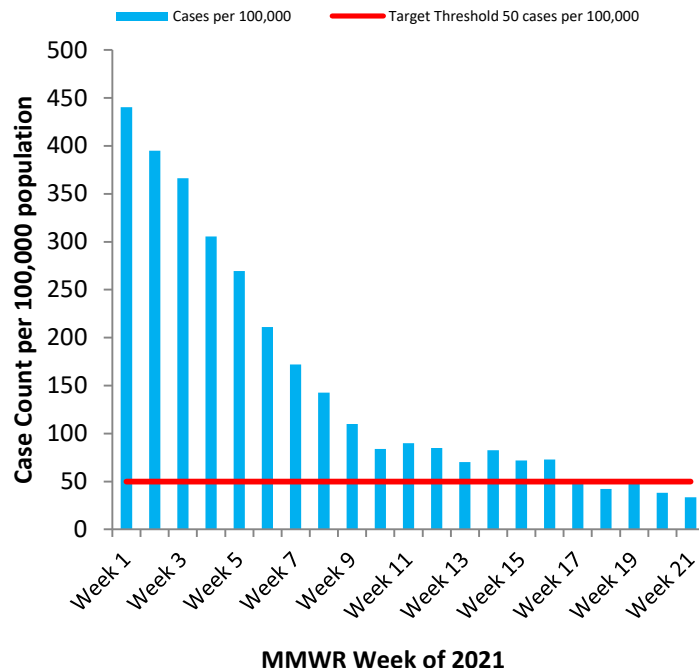


Table 2: Total Reported* Cases by ZIP Code

ZIP Code	Number of Cases	Change from previous week	Incidence per 100,000 thru 05/29	% of Confirmed Cases
45011	6,779	↑26 (0.4%) From 6753	9,729.2	17.6%
45013	5,174	↑20 (0.4%) from 5154	9,834.1	13.5%
45044	5,133	↑ 15 (0.3%) from 5118	9,717.5	13.3%
45069	5,031	↑ 11 (0.2%) from 5020	10,254.8	13.1%
45014	4,905	↑14 (0.3%) from 4891	11,168.8	12.8%
45056	3,214	↑15 (0.5%) from 3199	11,887.0	8.4%
45042	2,540	↑ 16 (0.6%) from 2524	9,602.7	6.6%
45067	1,532	↑7 (0.5%) from 1525	11,023.2	4.0%
45050	1,187	↑3 (0.3%) from 1184	13,886.3	3.1%
45015	1,012	↑2 (0.2%) from 1010	8,406.7	2.6%
45241	568	↓8 (1.4%) from 576		1.5%
45053	322	↑1 (0.3%) from 321	9,415.2	0.8%
45064	146	↑1 (0.7%) from 145		0.4%
45246	59	↑1 (1.7%) from 58		0.2%
45062	56	0 (0%) from 56		0.1%
Cases lacking zip code information or from zip codes with too few cases	810	-	-	2.2%
Butler County (inclusive)	38,468	↑104 (0.3%) from 38364	10,040.4	100%

Zip-codes not calculated have most of their population outside of Butler County. Rate given for comparison by population and will be higher than the actual amount. Zip-codes with too few cases have been removed for privacy concerns.

Red indicates zip codes where the percentage increase is greater than the increase from the previous week.

All figures show reported cases of COVID-19 in Butler County as of 1700 EDT 05/29/2021. Due to delays in reporting, the numbers of confirmed and probable cases on all figures are subject to change between reports and confirmed and probable case counts are likely to increase. *This should not be assumed to be the total disease burden of COVID-19 in Butler County only those that have been laboratory confirmed OR meet ODH probable case criteria AND reported to Public Health.

*Data is provisional – only confirmed or probable COVID-19 cases are included in counts. Report reflects time period since the introduction of SARS-CoV-2 into humans, measured in days. Data accessed from the Ohio Disease Reporting System (ODRS) on 05/29/2021 at 1700 EST.

**Deaths are now reconciled to the Ohio Department of Health's available data to avoid discrepancies between the state and local numbers. ODH's protocol has changed to avoid reconciliation errors and now only includes those deaths that have been reconciled with Vital statistics and may not match what has been reported to the CDC which are provisional numbers. This is a lagging indicator and will be multiple weeks behind.

#Data collected from Ohio Impact-SIIS 05/31/2021 ## Maps created by the Ohio Department of Health on 5/31/2021

Table 3. New Reports by MMWR Week, 2020

MMWR Week	End of Week	New Cases Reported	New Hospitalizations	New Confirmed Deaths**
11	3/14	6	1	0
12	3/21	10	3	0
13	3/28	11	6	0
14	4/4	44	18	3
15	4/11	50	16	1
16	4/18	43	10	2
17	4/25	55	19	5
18	5/2	99	16	1
19	5/9	131	18	7
20	5/16	134	17	4
21	5/23	184	26	8
22	5/30	111	12	7
23	6/6	113	16	1
24	6/13	89	10	1
25	6/20	116	13	1
26	6/27	167	19	7
27	7/4	198	10	6
28	7/11	286	18	0
29	7/18	260	26	3
30	7/25	269	12	4
31	8/1	274	9	3
32	8/8	242	17	2
33	8/15	264	14	3
34	8/22	264	14	7
35	8/29	545	24	9
36	9/5	767	17	8
37	9/12	496	19	8
38	9/19	368	17	4
39	9/26	377	14	10
40	10/3	503	13	5
41	10/10	590	19	6
42	10/17	681	31	10
43	10/24	767	36	8
44	10/31	907	56	6
45	11/7	1149	61	18
46	11/14	1538	52	13
47	11/21	1798	66	29
48	11/28	2059	68	30
49	12/05	2305	59	28
50	12/12	2686	70	32
51	12/19	2025	72	37
52	12/26	1426	52	37
53	1/2	1695	59	43
1	1/9	1623	45	25
2	1/16	1585	47	23
3	1/23	1432	34	29
4	1/30	1178	42	20
5	2/6	1059	59	15
6	2/13	829	39	14
7	2/20	680	25	11
8	2/27	556	16	8
9	3/06	428	13	4
10	3/13	322	10	3
11	3/20	345	24	3
12	3/27	326	13	4
13	4/3	270	20	6
14	4/10	316	25	5
15	4/17	287	15	4
16	4/24	270	15	4
17	5/1	213	8	0
18	5/8	163	11	1
19	5/15	201	18	0
20	5/22	151	7	0
21	5/29	132	6	0

All figures show reported cases of COVID-19 in Butler County as of 1700 EDT 05/29/2021. Due to delays in reporting, the numbers of confirmed and probable cases on all figures are subject to change between reports and confirmed and probable case counts are likely to increase. **This should not be assumed to be the total disease burden of COVID-19 in Butler County only those that have been laboratory confirmed OR meet ODH probable case criteria AND reported to Public Health.

*Data is provisional – only confirmed or probable COVID-19 cases are included in counts. Report reflects time period since the introduction of SARS-CoV-2 into humans, measured in days. Data accessed from the Ohio Disease Reporting System (ODRS) on 05/29/2021 at 1700 EST.

**Deaths are now reconciled to the Ohio Department of Health's available data to avoid discrepancies between the state and local numbers. ODH's protocol has changed to avoid reconciliation errors and now only includes those deaths that have been reconciled with Vital statistics and may not match what has been reported to the CDC which are provisional numbers. This is a lagging indicator and will be multiple weeks behind.

#Data collected from Ohio Impact-SIIS 05/31/2021 ## Maps created by the Ohio Department of Health on 5/31/2021

Figure 4. New Hospitalizations of Butler County Residents by Admission Date, 2020-21*

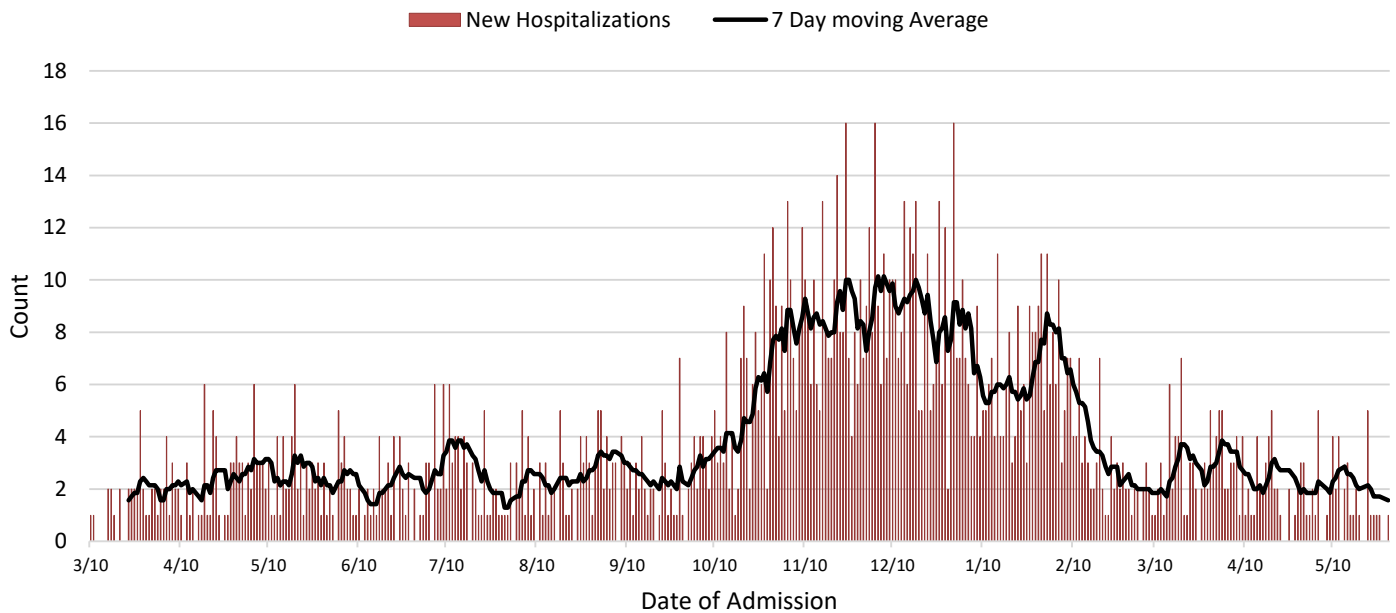
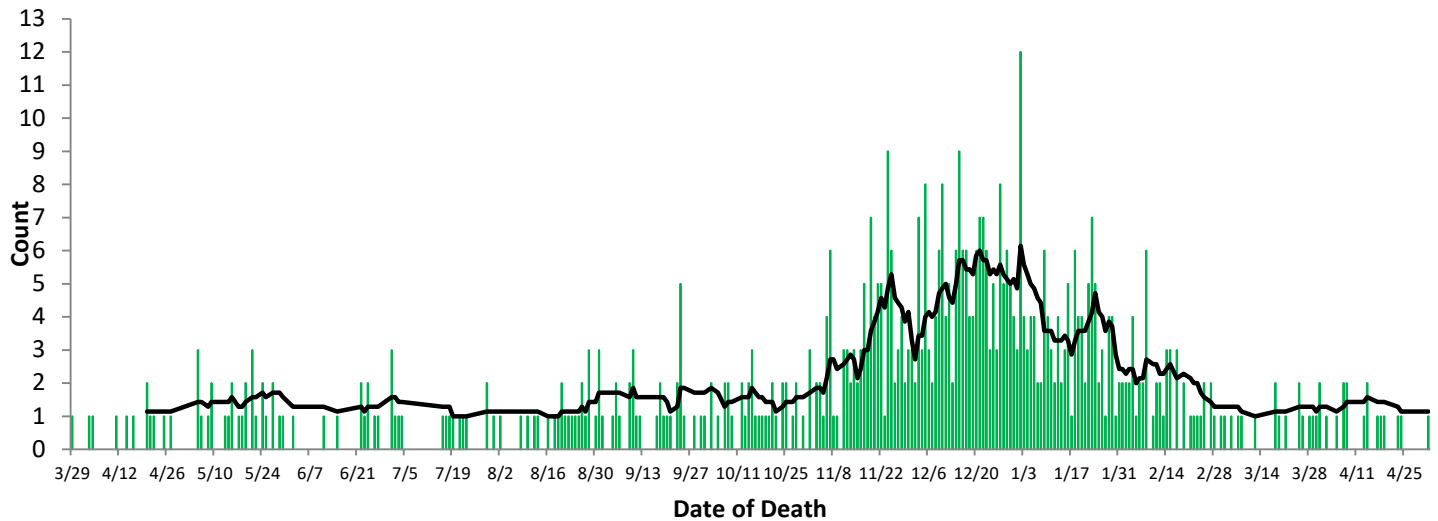


Figure 5. Confirmed COVID-19 Deaths by date of death, 2020-21**



All figures show reported cases of COVID-19 in Butler County as of 1700 EDT 05/29/2021. Due to delays in reporting, the numbers of confirmed and probable cases on all figures are subject to change between reports and confirmed and probable case counts are likely to increase. **This should not be assumed to be the total disease burden of COVID-19 in Butler County only those that have been laboratory confirmed OR meet ODH probable case criteria AND reported to Public Health.

*Data is provisional – only confirmed or probable COVID-19 cases are included in counts. Report reflects time period since the introduction of SARS-CoV-2 into humans, measured in days. Data accessed from the Ohio Disease Reporting System (ODRS) on 05/29/2021 at 1700 EST.

**Deaths are now reconciled to the Ohio Department of Health's available data to avoid discrepancies between the state and local numbers. ODH's protocol has changed to avoid reconciliation errors and now only includes those deaths that have been reconciled with Vital statistics and may not match what has been reported to the CDC which are provisional numbers. This is a lagging indicator and will be multiple weeks behind.

#Data collected from Ohio Impact-SIIS 05/31/2021 ## Maps created by the Ohio Department of Health on 5/31/2021

Figure 6. Butler County Data analysis performed by Cincinnati Children's Hospital Week of 5/27*

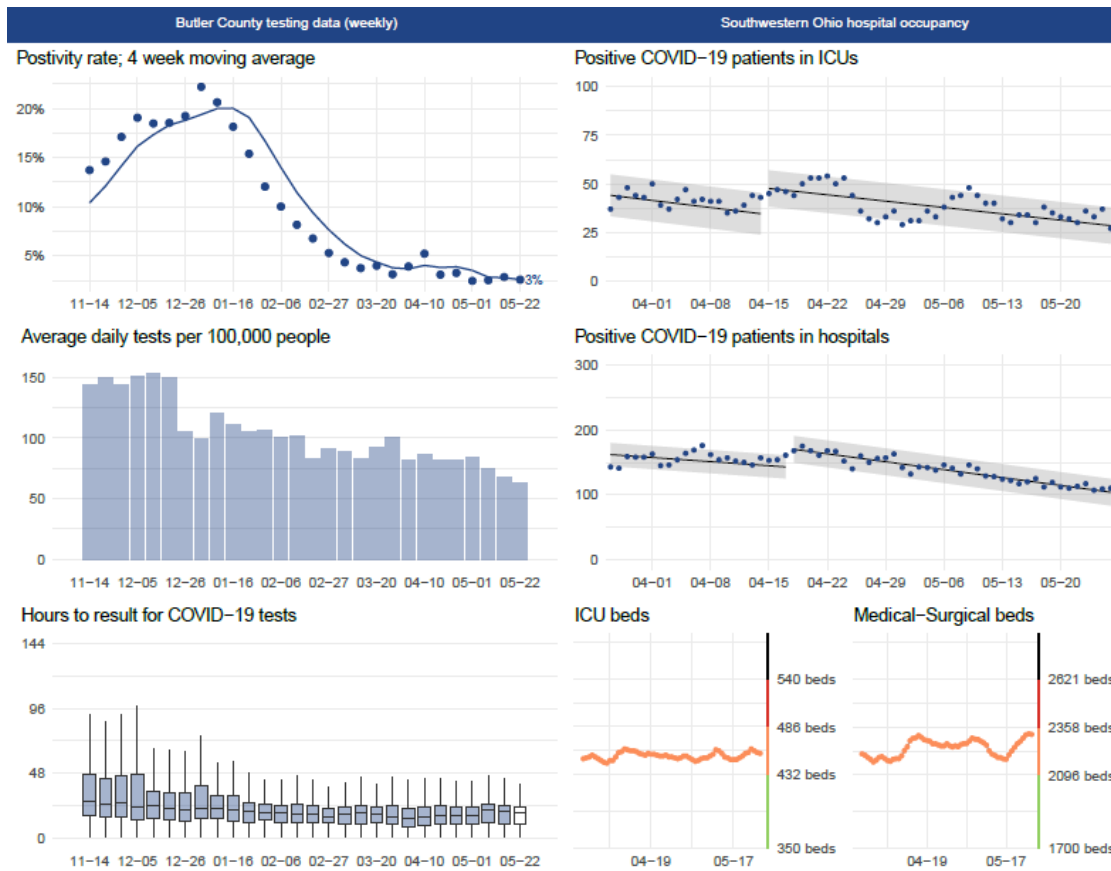
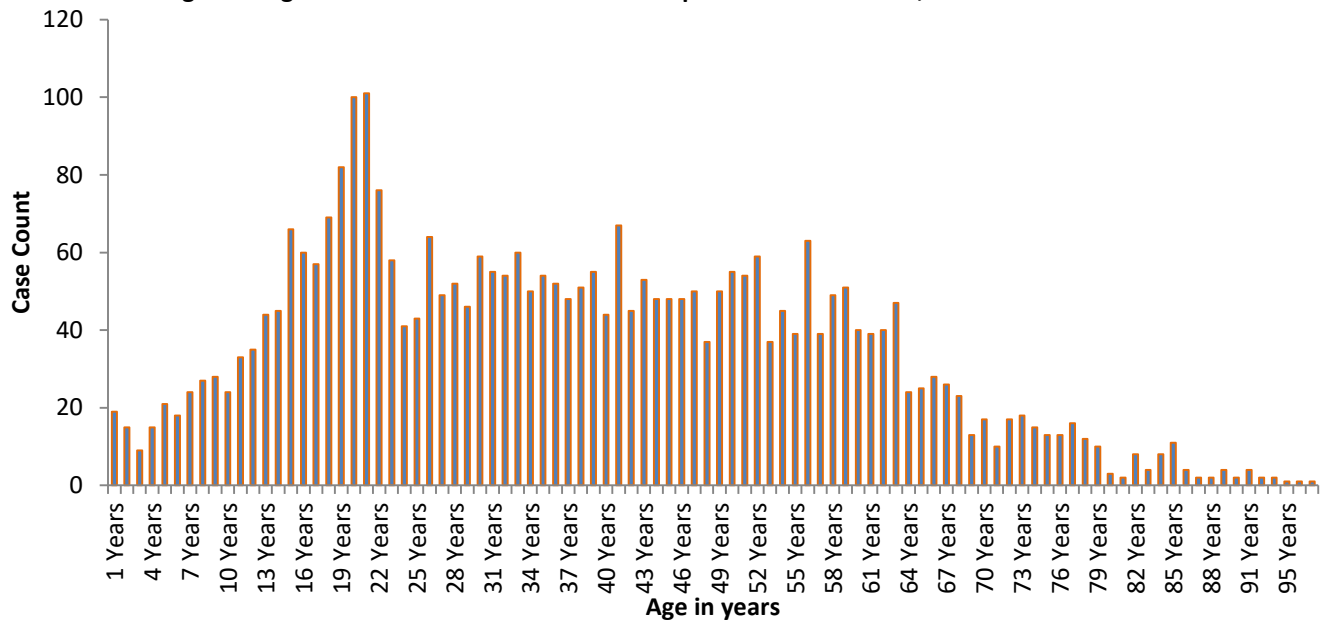


Figure 7. Age distribution of COVID-19 Cases reported Since March 1, 2021



All figures show reported cases of COVID-19 in Butler County as of 1700 EDT 05/29/2021. Due to delays in reporting, the numbers of confirmed and probable cases on all figures are subject to change between reports and confirmed and probable case counts are likely to increase. **This should not be assumed to be the total disease burden of COVID-19 in Butler County only those that have been laboratory confirmed OR meet ODH probable case criteria AND reported to Public Health.

*Data is provisional – only confirmed or probable COVID-19 cases are included in counts. Report reflects time period since the introduction of SARS-CoV-2 into humans, measured in days. Data accessed from the Ohio Disease Reporting System (ODRS) on 05/29/2021 at 1700 EST.

**Deaths are now reconciled to the Ohio Department of Health's available data to avoid discrepancies between the state and local numbers. ODH's protocol has changed to avoid reconciliation errors and now only includes those deaths that have been reconciled with Vital statistics and may not match what has been reported to the CDC which are provisional numbers. This is a lagging indicator and will be multiple weeks behind.

#Data collected from Ohio Impact-SIIS 05/31/2021 ## Maps created by the Ohio Department of Health on 5/31/2021

Figure 8. Cases by Date of Report Since March 1, 2021

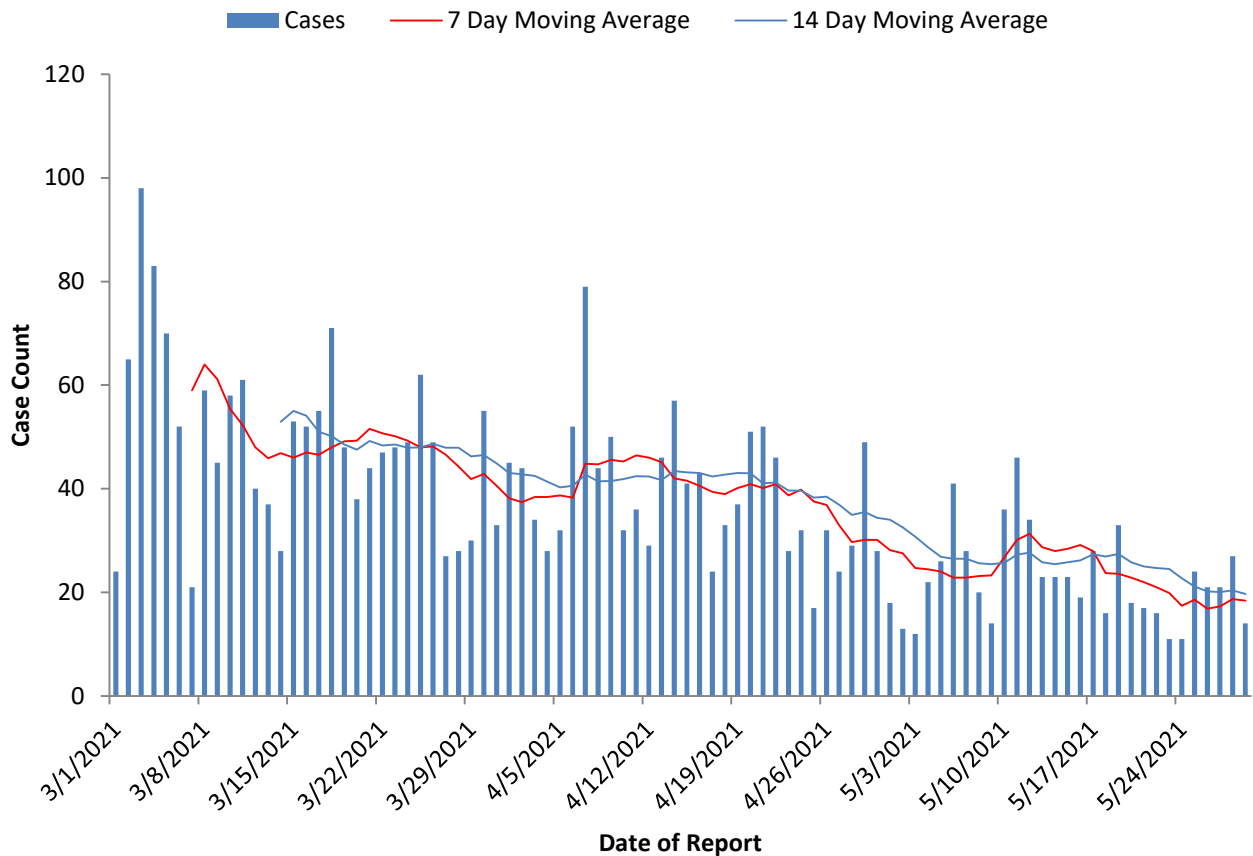
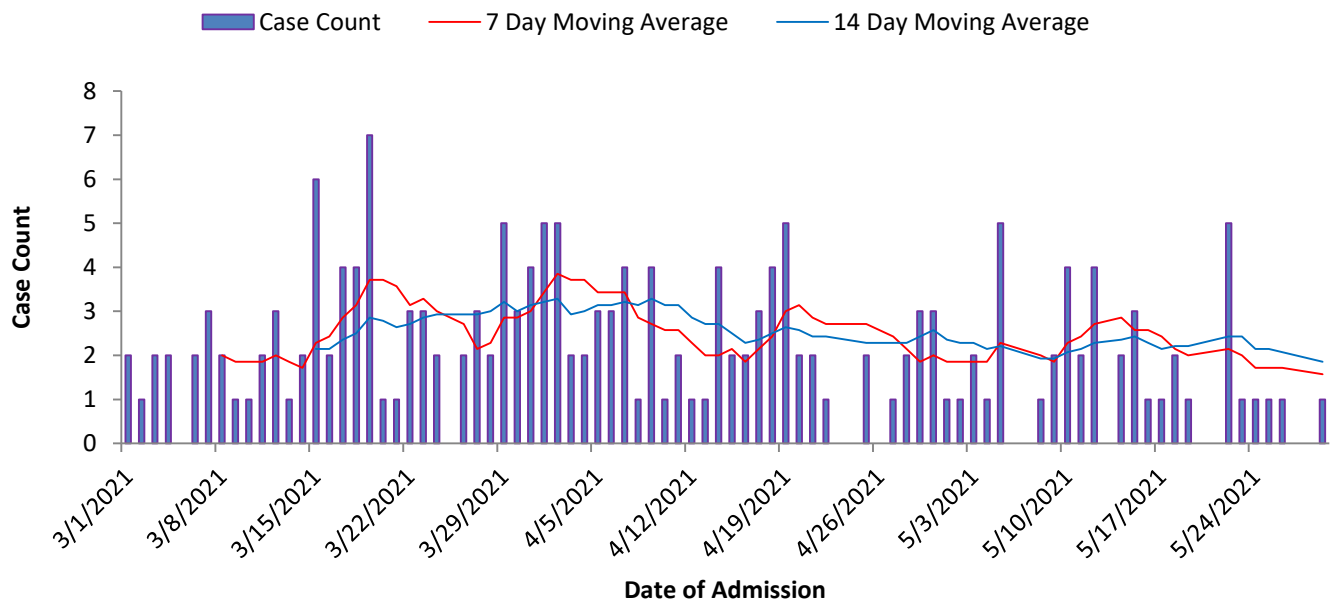


Figure 9. Hospitalizations Since March 1, 2021



All figures show reported cases of COVID-19 in Butler County as of 1700 EDT 05/29/2021. Due to delays in reporting, the numbers of confirmed and probable cases on all figures are subject to change between reports and confirmed and probable case counts are likely to increase. **This should not be assumed to be the total disease burden of COVID-19 in Butler County only those that have been laboratory confirmed OR meet ODH probable case criteria AND reported to Public Health.

*Data is provisional – only confirmed or probable COVID-19 cases are included in counts. Report reflects time period since the introduction of SARS-CoV-2 into humans, measured in days. Data accessed from the Ohio Disease Reporting System (ODRS) on 05/29/2021 at 1700 EST.

**Deaths are now reconciled to the Ohio Department of Health's available data to avoid discrepancies between the state and local numbers. ODH's protocol has changed to avoid reconciliation errors and now only includes those deaths that have been reconciled with Vital statistics and may not match what has been reported to the CDC which are provisional numbers. This is a lagging indicator and will be multiple weeks behind.

#Data collected from Ohio Impact-SIIS 05/31/2021 ## Maps created by the Ohio Department of Health on 5/31/2021

COVID-19 Vaccinations in Butler County

Table 4. Vaccination Status by Age Group in Butler County and Ohio[#]

Age Group	Butler County Vaccine Started	Ohio Vaccine Started	Butler County Vaccine Completed	Ohio Vaccine Completed
0-19	9.9%	10.6%	5.2%	5.5%
20-29	32.6%	36.8%	26.9%	30.8%
30-39	43.2%	43.9%	36.0%	37.7%
40-49	50.3%	50.4%	43.3%	44.1%
50-59	58.3%	58.9%	52.1%	52.8%
60-64	69.3%	69.6%	63.1%	63.9%
65-69	76.6%	78.1%	70.8%	73.1%
70-74	82.7%	82.8%	77.4%	78.2%
75-79	78.0%	79.6%	73.3%	75.0%
80+	75.6%	77.5%	71.6%	73.4%

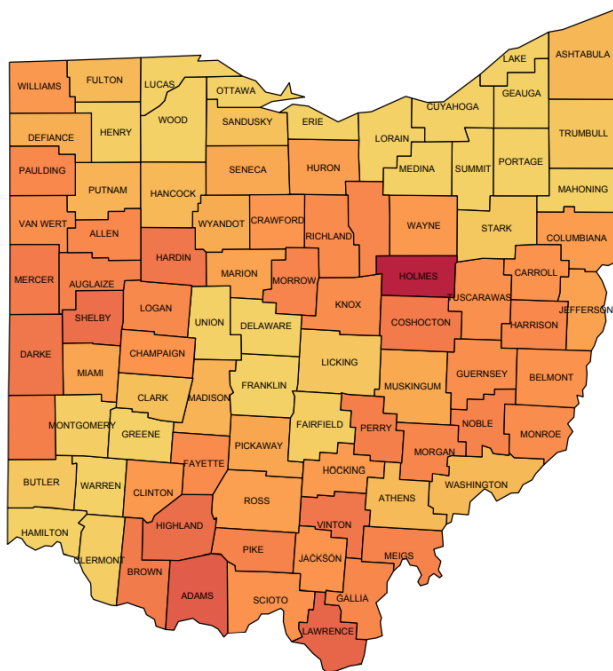
% of Butler County that has received at least one dose: 42.43% (162,562)

% of Butler County with vaccine completed: 36.66% (140,439)

% of Ohio that has received at least one dose: 45.38% (5,304,471)

% of Ohio with vaccine completed: 39.86% (4,659,525)

Figure 10. % of Ohio Population Vaccinated^{##}

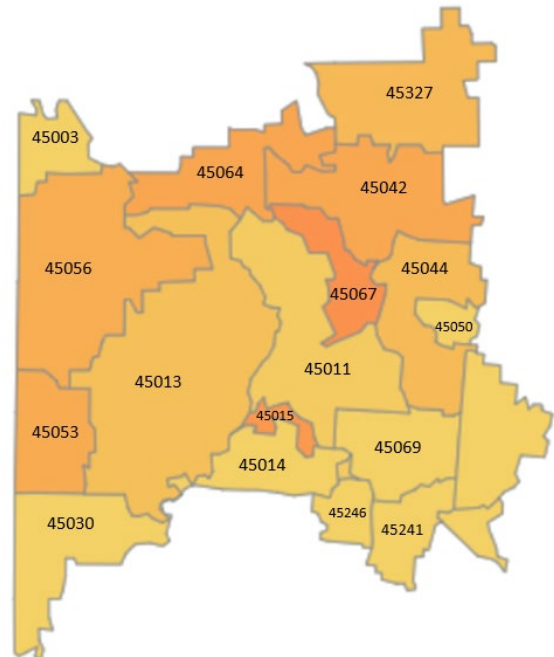


Percent Vaccinated

0.00%

44.31%

Figure 11. % of Butler County Vaccinated^{##}



All figures show reported cases of COVID-19 in Butler County as of 1700 EDT 05/29/2021. Due to delays in reporting, the numbers of confirmed and probable cases on all figures are subject to change between reports and confirmed and probable case counts are likely to increase. ^{*}This should not be assumed to be the total disease burden of COVID-19 in Butler County only those that have been laboratory confirmed OR meet ODH probable case criteria AND reported to Public Health.

^{*}Data is provisional – only confirmed or probable COVID-19 cases are included in counts. Report reflects time period since the introduction of SARS-CoV-2 into humans, measured in days. Data accessed from the Ohio Disease Reporting System (ODRS) on 05/29/2021 at 1700 EST.

^{**}Deaths are now reconciled to the Ohio Department of Health's available data to avoid discrepancies between the state and local numbers. ODH's protocol has changed to avoid reconciliation errors and now only includes those deaths that have been reconciled with Vital statistics and may not match what has been reported to the CDC which are provisional numbers. ^{##}This is a lagging indicator and will be multiple weeks behind.

^{##}Data collected from Ohio Impact-SIIS 05/31/2021 ^{##} Maps created by the Ohio Department of Health on 5/31/2021