

Butler County General Health District's 68th COVID-19 Update (5/15/2021)

Confirmed and Probable COVID-19 Cases Reported to Butler County*

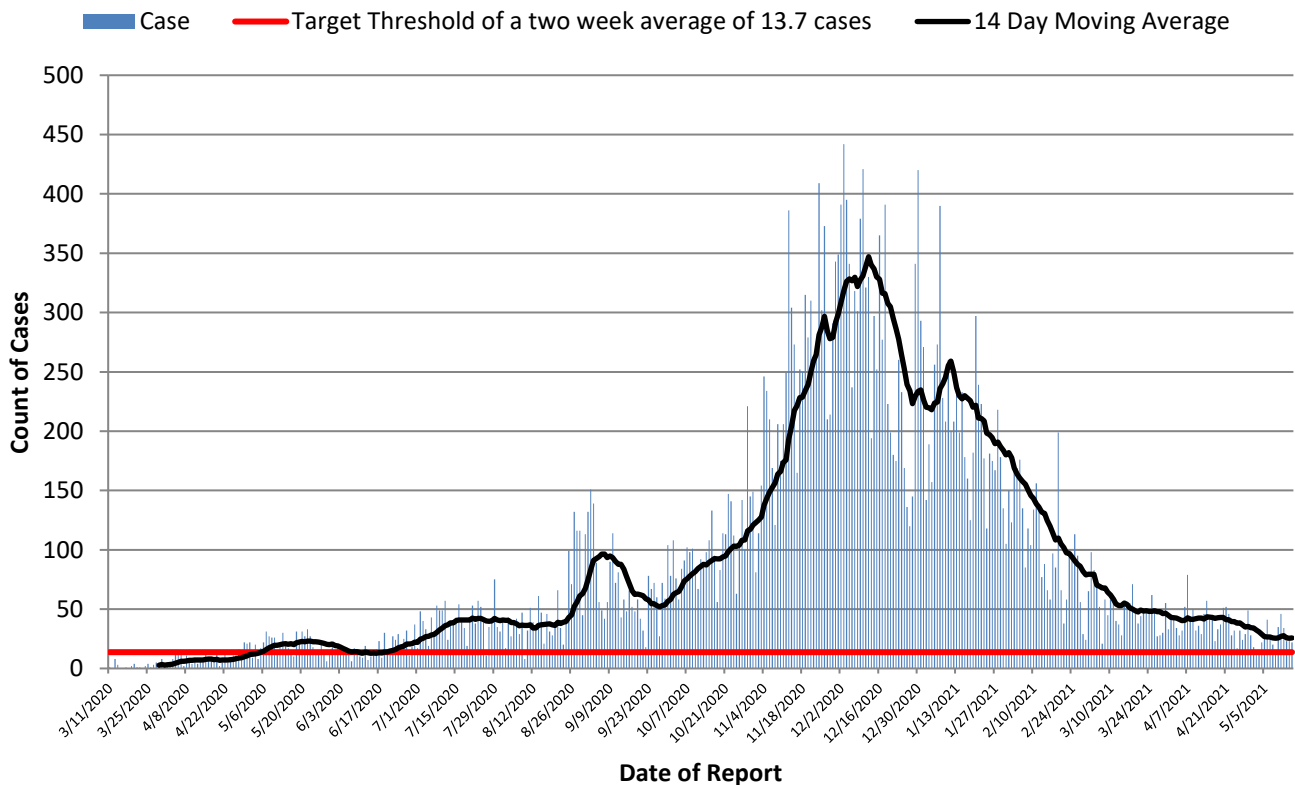
Butler County Residents, 2020-21

Total # of Cases (05/15): 38,237*
 ODH verified Deaths (05/15): 585**
 Hospitalizations (05/15): 1,511
 ICU admissions (05/15): 129
 First Case Reported: 3/11/2020
 Last Case Reported (so far): 5/09/2021
 Confirmed Cases: 34,272
 Probable Cases: 3,965
 Age Range: <1-103
 Median Age: 40
 Mean Age: 40.9
 Incidence (thru 05/15): 9,980.1 per 100,000
 Prevalence (thru 05/15): 9.98% of BC population
 14-Day Positivity Rate (5/15): 3.1% of tests performed in BC

In the following tables and figures, all threshold values are equivalent.

Table 1: Indicators for Reopening for Butler County		
Indicator	Last 2 Weeks	Governor DeWine's Target
Incidence per 100,000 population	93.7 per 100,000	50 per 100,000
Cumulative Case Count	359 through 14 days	191.6 through 14 days
Daily Average of new cases	25.6 per day through 14 days	13.7 per day through 14 days

Figure 1. Reported Cases of COVID-19 by Date of Report*



All figures show reported cases of COVID-19 in Butler County as of 1700 EDT 05/18/2021. Due to delays in reporting, the numbers of confirmed and probable cases on all figures are subject to change between reports and confirmed and probable case counts are likely to increase. **This should not be assumed to be the total disease burden of COVID-19 in Butler County only those that have been laboratory confirmed OR meet ODH probable case criteria AND reported to Public Health.

*Data is provisional – only confirmed or probable COVID-19 cases are included in counts. Report reflects time period since the introduction of SARS-CoV-2 into humans, measured in days. Data accessed from the Ohio Disease Reporting System (ODRS) on 05/18/2021 at 1700 EST.

**Deaths are now reconciled to the Ohio Department of Health's available data to avoid discrepancies between the state and local numbers. ODH's protocol has changed to avoid reconciliation errors and now only includes those deaths that have been reconciled with Vital statistics and may not match what has been reported to the CDC which are provisional numbers. This is a lagging indicator and will be multiple weeks behind.

#Data collected from Ohio Impact-SIIS 05/17/2021 ## Map and Table created by the Ohio Department of Health

Figure 2. Cumulative Count of Cases of COVID-19 Reported by day previous two weeks

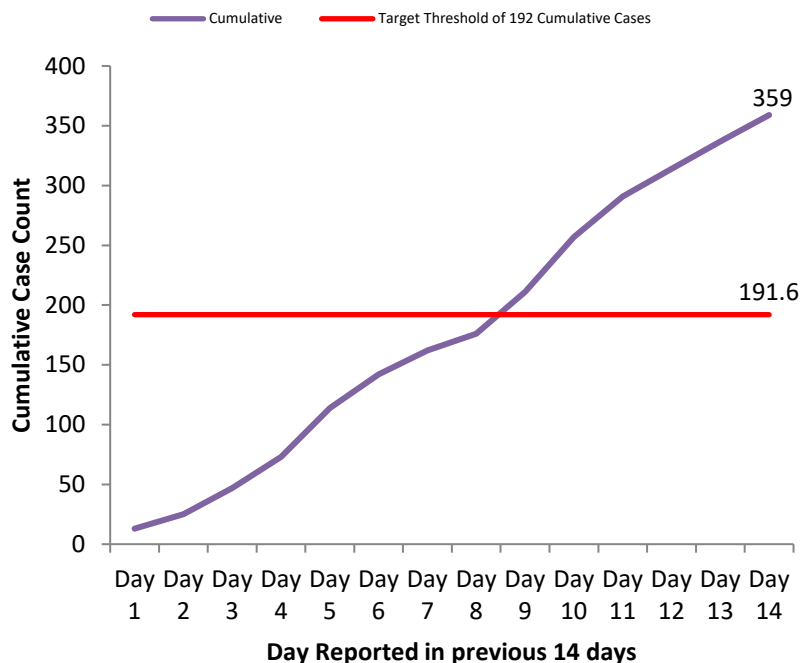


Figure 3. Cases per 100,000 population Reported in 2021

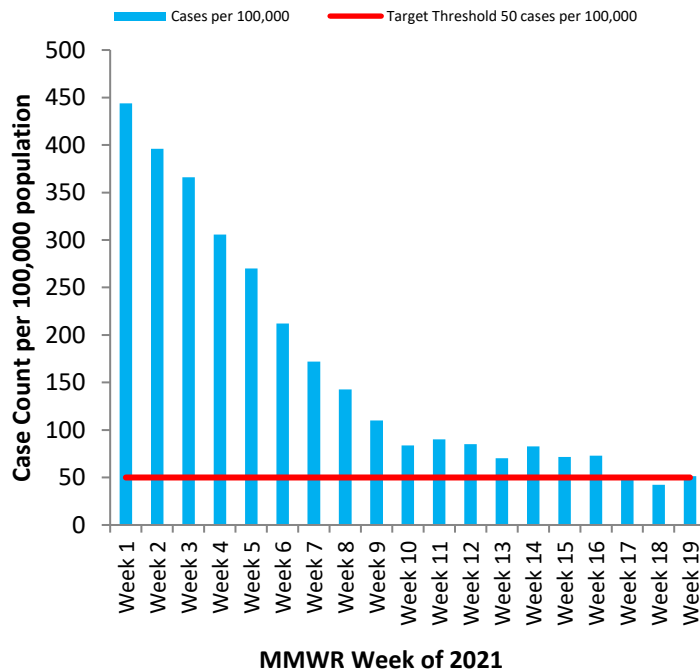


Table 2: Total Reported* Cases by ZIP Code

ZIP Code	Number of Cases	Change from previous week	Incidence per 100,000 thru 05/15	% of Confirmed Cases
45011	6722	↑40 (0.6%) From 6682	9647.4	17.6%
45013	5142	↑20 (0.4%) from 5122	9773.2	13.4%
45044	5094	↑ 24 (0.5%) from 5070	9643.7	13.3%
45069	4999	↑ 20 (0.4%) from 4979	10189.6	13.1%
45014	4867	↑25 (0.5%) from 4842	11082.3	12.7%
45056	3202	↑6 (0.2%) from 3196	11842.6	8.4%
45042	2511	↑ 18 (0.7%) from 2493	9493.0	6.6%
45067	1521	↑6 (0.4%) from 1515	10944.0	4.0%
45050	1180	↑4 (0.3%) from 1176	13804.4	3.1%
45015	1007	↑3 (0.3%) from 1004	8365.2	2.6%
45241	581	↓1 (0.2%) from 582		1.5%
45053	320	↑4 (1.3%) from 316	9356.7	0.8%
45064	144	0 (0%) from 144		0.4%
45246	57	0 (0%) from 57		0.1%
45062	56	0 (0%) from 56		0.1%
Cases lacking zip code information or from zip codes with too few cases	834	-	-	2.2%
Butler County (inclusive)	38,273	↑158 (0.4%) from 38079	9,938.8	100%

Zip-codes not calculated have most of their population outside of Butler County. Rate given for comparison by population and will be higher than the actual amount. Zip-codes with too few cases have been removed for privacy concerns.

Red indicates zip codes where the percentage increase is greater than the increase from the previous week.

All figures show reported cases of COVID-19 in Butler County as of 1700 EDT 05/18/2021. Due to delays in reporting, the numbers of confirmed and probable cases on all figures are subject to change between reports and confirmed and probable case counts are likely to increase. **This should not be assumed to be the total disease burden of COVID-19 in Butler County only those that have been laboratory confirmed OR meet ODH probable case criteria AND reported to Public Health.

*Data is provisional – only confirmed or probable COVID-19 cases are included in counts. Report reflects time period since the introduction of SARS-CoV-2 into humans, measured in days. Data accessed from the Ohio Disease Reporting System (ODRS) on 05/18/2021 at 1700 EST.

**Deaths are now reconciled to the Ohio Department of Health's available data to avoid discrepancies between the state and local numbers. ODH's protocol has changed to avoid reconciliation errors and now only includes those deaths that have been reconciled with Vital statistics and may not match what has been reported to the CDC which are provisional numbers. This is a lagging indicator and will be multiple weeks behind.

#Data collected from Ohio Impact-SIIS 05/17/2021 ## Map and Table created by the Ohio Department of Health

Table 3. New Reports by MMWR Week, 2020

MMWR Week	End of Week	New Cases Reported	New Hospitalizations	New Confirmed Deaths**
11	3/14	6	1	0
12	3/21	10	3	0
13	3/28	11	6	0
14	4/4	44	18	3
15	4/11	50	16	1
16	4/18	43	10	2
17	4/25	55	19	5
18	5/2	99	16	1
19	5/9	131	18	7
20	5/16	134	17	4
21	5/23	184	26	7
22	5/30	111	12	7
23	6/6	113	16	1
24	6/13	89	10	1
25	6/20	115	13	1
26	6/27	167	19	7
27	7/4	198	10	6
28	7/11	286	18	0
29	7/18	260	26	3
30	7/25	269	12	4
31	8/1	274	9	3
32	8/8	242	17	2
33	8/15	264	14	3
34	8/22	264	14	7
35	8/29	545	24	9
36	9/5	770	14	8
37	9/12	496	18	8
38	9/19	368	17	4
39	9/26	379	14	10
40	10/3	504	10	5
41	10/10	590	16	6
42	10/17	682	28	10
43	10/24	770	25	8
44	10/31	909	43	6
45	11/7	1149	48	18
46	11/14	1540	33	13
47	11/21	1804	42	28
48	11/28	2059	59	30
49	12/05	2305	59	28
50	12/12	2686	69	30
51	12/19	2030	72	36
52	12/26	1428	52	37
53	1/2	1697	59	43
1	1/9	1637	45	25
2	1/16	1590	47	23
3	1/23	1432	34	29
4	1/30	1179	37	20
5	2/6	1060	59	14
6	2/13	832	40	14
7	2/20	680	25	11
8	2/27	557	16	8
9	3/06	428	13	4
10	3/13	322	10	3
11	3/20	345	24	3
12	3/27	326	13	4
13	4/3	270	20	6
14	4/10	316	25	5
15	4/17	287	14	2
16	4/24	270	15	1
17	5/1	213	7	0
18	5/8	163	11	1
19	5/15	200	14	0

All figures show reported cases of COVID-19 in Butler County as of 1700 EDT 05/18/2021. Due to delays in reporting, the numbers of confirmed and probable cases on all figures are subject to change between reports and confirmed and probable case counts are likely to increase. **This should not be assumed to be the total disease burden of COVID-19 in Butler County only those that have been laboratory confirmed OR meet ODH probable case criteria AND reported to Public Health.

*Data is provisional – only confirmed or probable COVID-19 cases are included in counts. Report reflects time period since the introduction of SARS-CoV-2 into humans, measured in days. Data accessed from the Ohio Disease Reporting System (ODRS) on 05/18/2021 at 1700 EST.

**Deaths are now reconciled to the Ohio Department of Health's available data to avoid discrepancies between the state and local numbers. ODH's protocol has changed to avoid reconciliation errors and now only includes those deaths that have been reconciled with Vital statistics and may not match what has been reported to the CDC which are provisional numbers. This is a lagging indicator and will be multiple weeks behind.

#Data collected from Ohio Impact-SIIS 05/17/2021 ## Map and Table created by the Ohio Department of Health

Figure 4. New Hospitalizations of Butler County Residents by Admission Date, 2020-21*

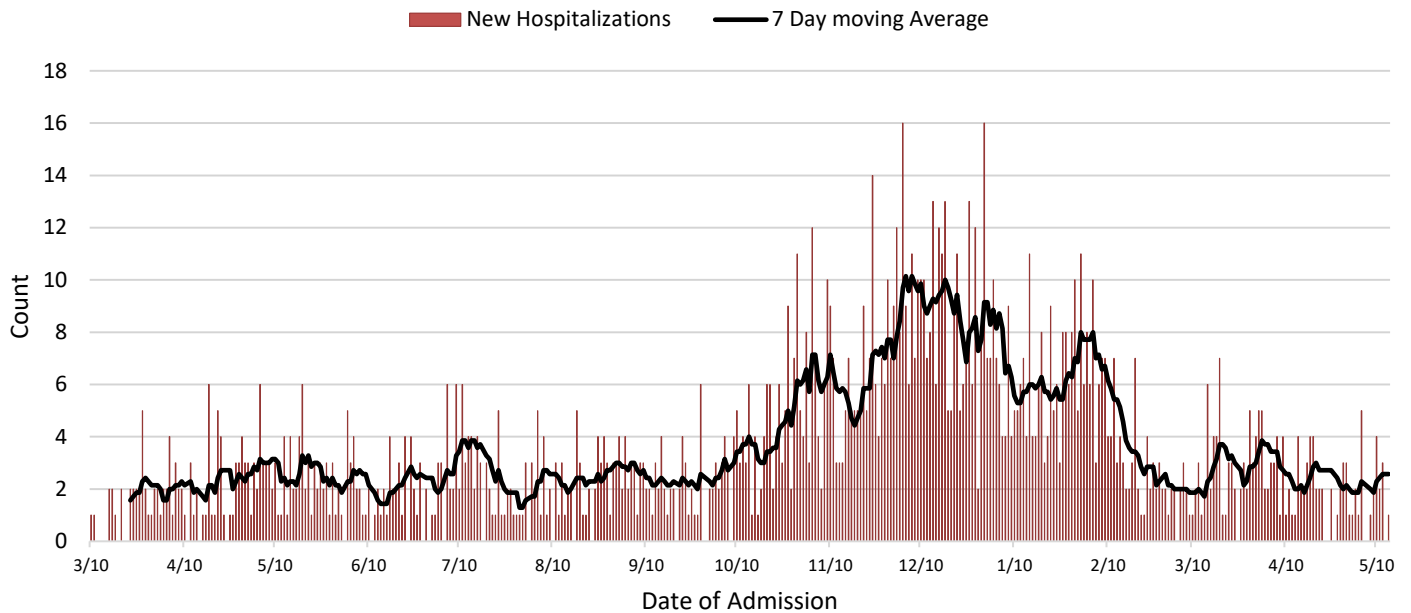
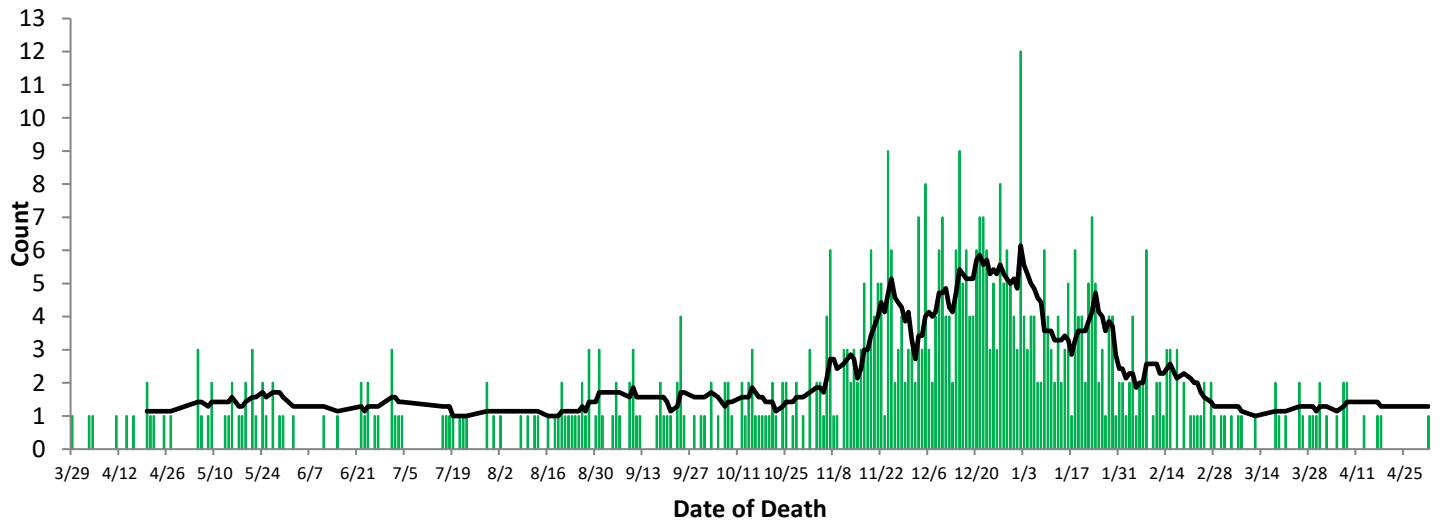


Figure 5. Confirmed COVID-19 Deaths by date of death, 2020-21**



All figures show reported cases of COVID-19 in Butler County as of 1700 EDT 05/18/2021. Due to delays in reporting, the numbers of confirmed and probable cases on all figures are subject to change between reports and confirmed and probable case counts are likely to increase. **This should not be assumed to be the total disease burden of COVID-19 in Butler County only those that have been laboratory confirmed OR meet ODH probable case criteria AND reported to Public Health.

*Data is provisional – only confirmed or probable COVID-19 cases are included in counts. Report reflects time period since the introduction of SARS-CoV-2 into humans, measured in days. Data accessed from the Ohio Disease Reporting System (ODRS) on 05/18/2021 at 1700 EST.

**Deaths are now reconciled to the Ohio Department of Health's available data to avoid discrepancies between the state and local numbers. ODH's protocol has changed to avoid reconciliation errors and now only includes those deaths that have been reconciled with Vital statistics and may not match what has been reported to the CDC which are provisional numbers. This is a lagging indicator and will be multiple weeks behind.

#Data collected from Ohio Impact-SIIS 05/17/2021 ## Map and Table created by the Ohio Department of Health

Figure 6. Butler County Data analysis performed by Cincinnati Children's Hospital Week of 5/08*

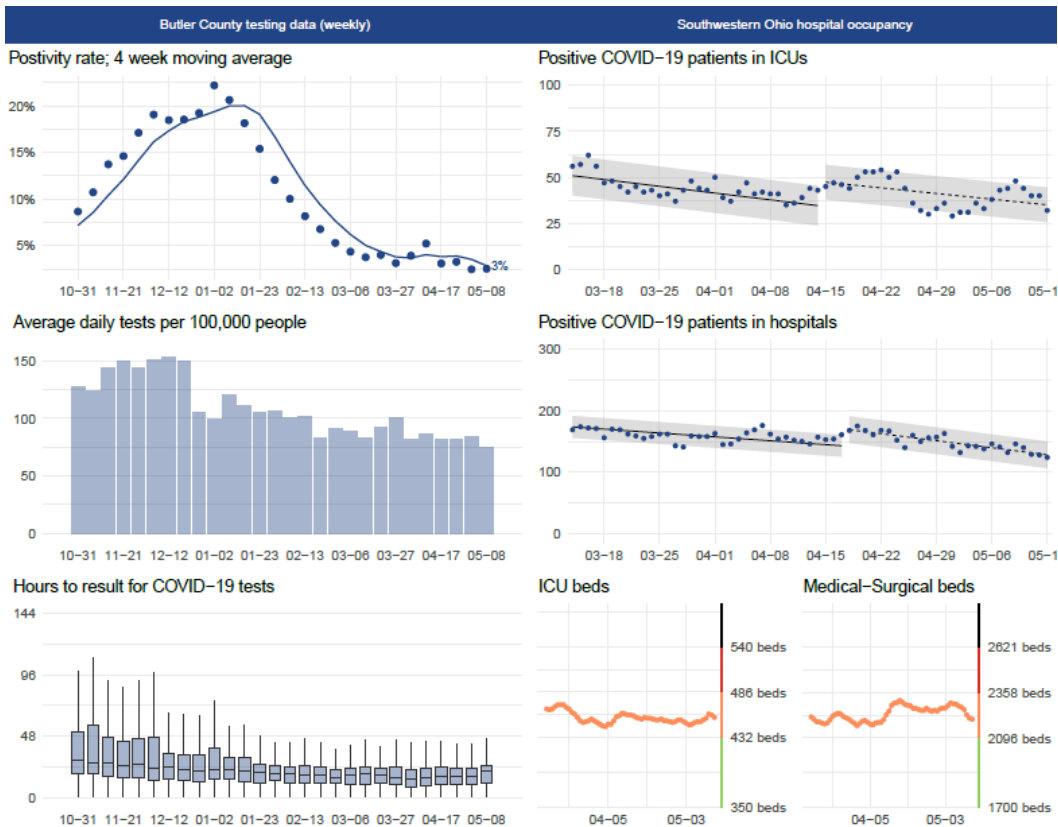
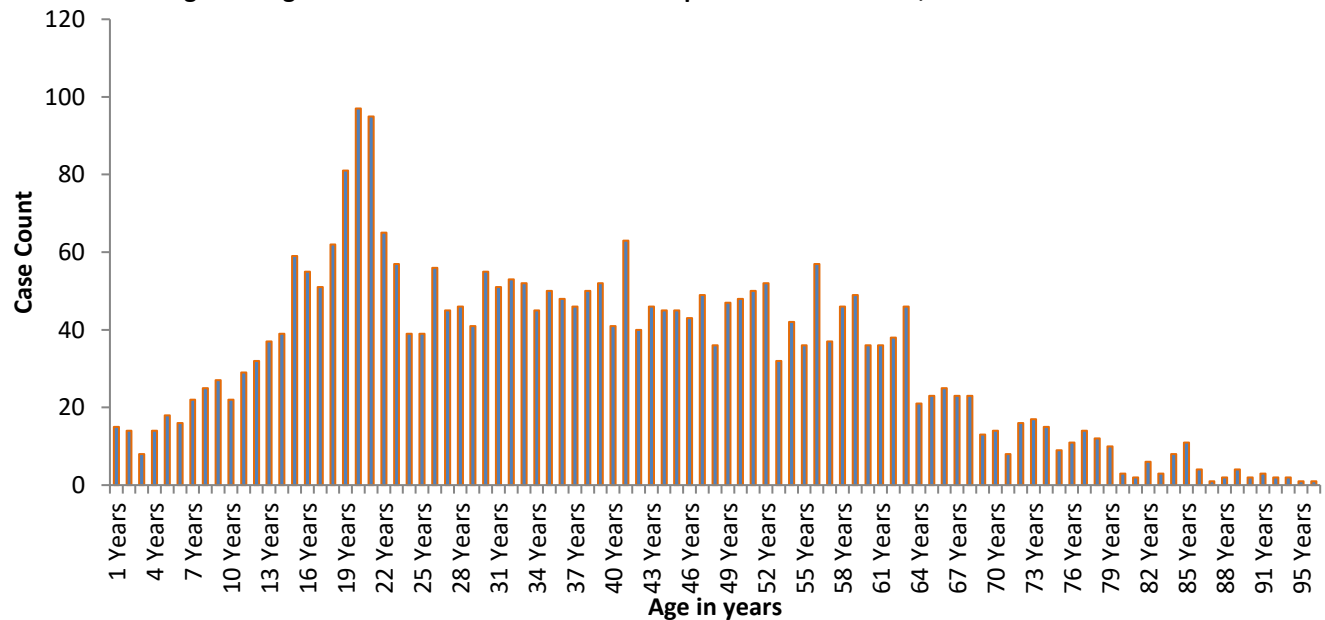


Figure 7. Age distribution of COVID-19 Cases reported Since March 1, 2021



All figures show reported cases of COVID-19 in Butler County as of 1700 EDT 05/18/2021. Due to delays in reporting, the numbers of confirmed and probable cases on all figures are subject to change between reports and confirmed and probable case counts are likely to increase. **This should not be assumed to be the total disease burden of COVID-19 in Butler County only those that have been laboratory confirmed OR meet ODH probable case criteria AND reported to Public Health.

*Data is provisional – only confirmed or probable COVID-19 cases are included in counts. Report reflects time period since the introduction of SARS-CoV-2 into humans, measured in days. Data accessed from the Ohio Disease Reporting System (ODRS) on 05/18/2021 at 1700 EST.

**Deaths are now reconciled to the Ohio Department of Health's available data to avoid discrepancies between the state and local numbers. ODH's protocol has changed to avoid reconciliation errors and now only includes those deaths that have been reconciled with Vital statistics and may not match what has been reported to the CDC which are provisional numbers. This is a lagging indicator and will be multiple weeks behind.

#Data collected from Ohio Impact-SIIS 05/17/2021 ## Map and Table created by the Ohio Department of Health

Figure 8. Cases by Date of Report Since March 1, 2021

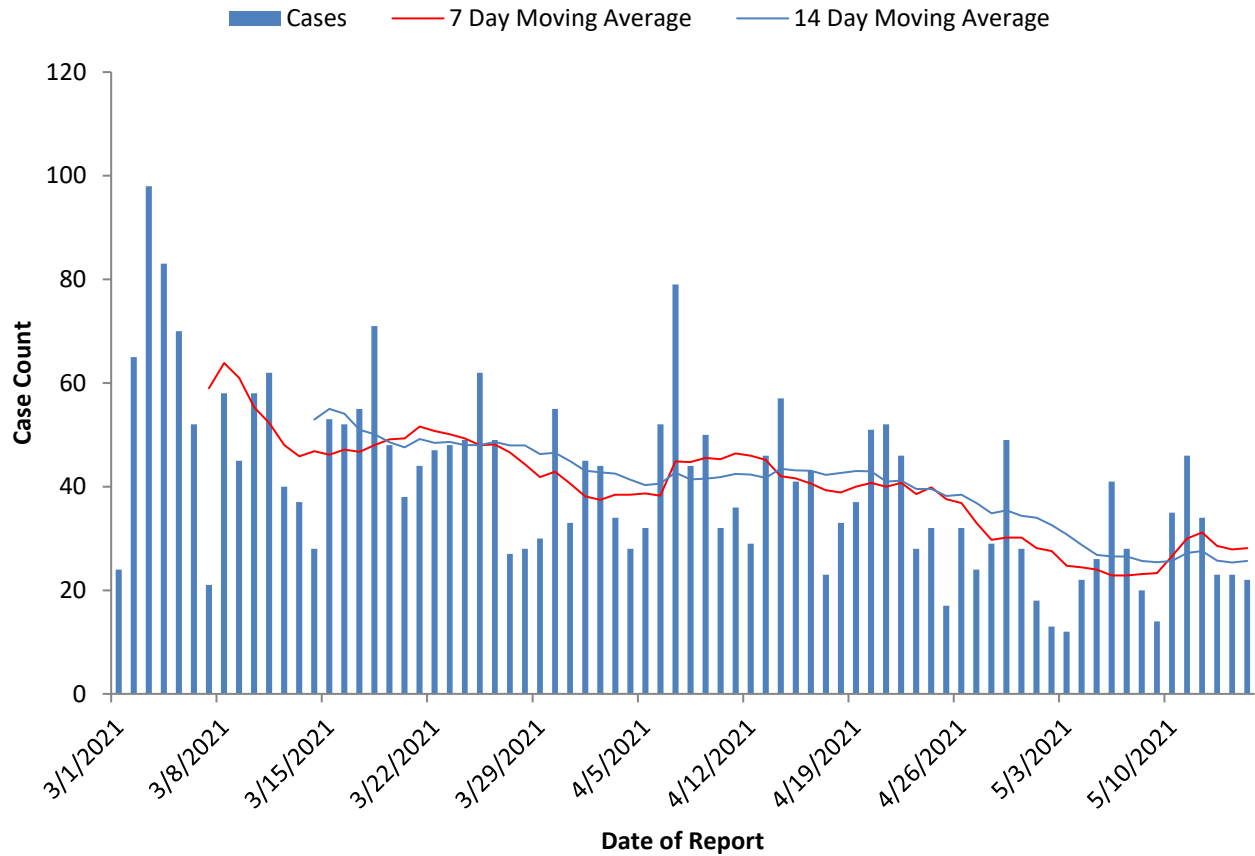
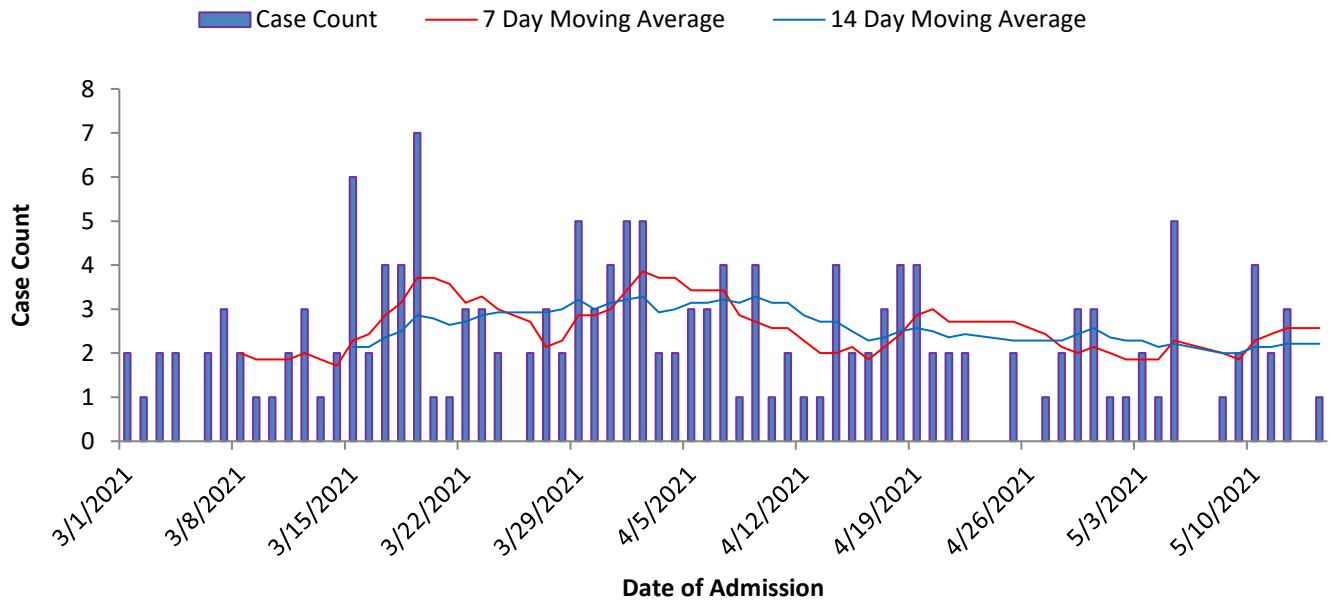


Figure 9. Hospitalizations Since March 1, 2021



All figures show reported cases of COVID-19 in Butler County as of 1700 EDT 05/18/2021. Due to delays in reporting, the numbers of confirmed and probable cases on all figures are subject to change between reports and confirmed and probable case counts are likely to increase. **This should not be assumed to be the total disease burden of COVID-19 in Butler County only those that have been laboratory confirmed OR meet ODH probable case criteria AND reported to Public Health.

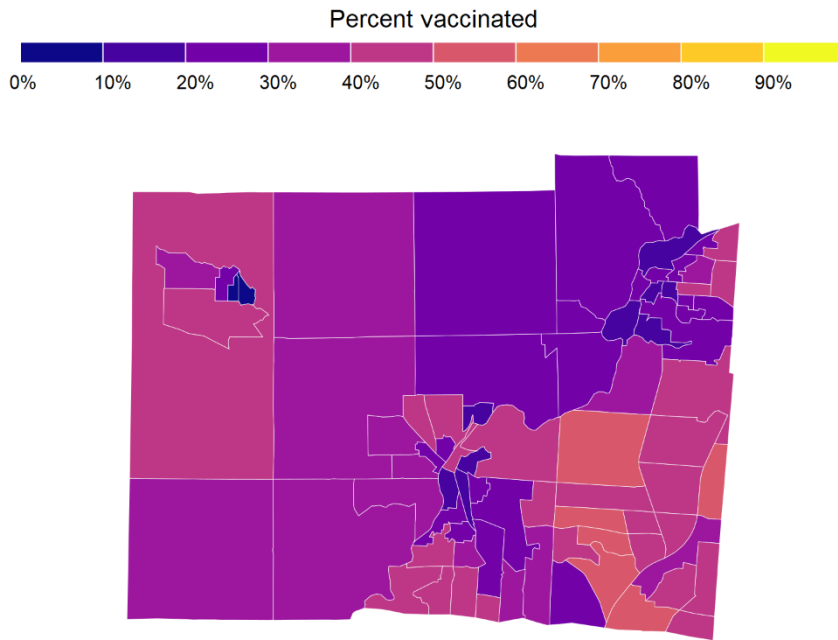
*Data is provisional – only confirmed or probable COVID-19 cases are included in counts. Report reflects time period since the introduction of SARS-CoV-2 into humans, measured in days. Data accessed from the Ohio Disease Reporting System (ODRS) on 05/18/2021 at 1700 EST.

**Deaths are now reconciled to the Ohio Department of Health's available data to avoid discrepancies between the state and local numbers. ODH's protocol has changed to avoid reconciliation errors and now only includes those deaths that have been reconciled with Vital statistics and may not match what has been reported to the CDC which are provisional numbers. This is a lagging indicator and will be multiple weeks behind.

#Data collected from Ohio Impact-SIIS 05/17/2021 ## Map and Table created by the Ohio Department of Health

COVID-19 Vaccinations in Butler County

Figure 10. COVID-19 Vaccination Percentages by Census Tract##



% of Butler County Started Vaccination:	40.07%
% of State of Ohio Started Vaccinated:	43.19%
# Vaccinations Started in Butler County:	151,749
# Vaccinations Completed in Butler County:	131,417
# Vaccines Started in Ohio:	4,995,375
# Vaccines Completed in Ohio:	4,387,656

Table 5. Vaccine Start and Completed Percentage by Age group#

Age Group	Vaccine Started	Vaccine Completed
0-19	5.6%	3.9%
20-29	28.3%	22.1%
30-39	38.1%	29.8%
40-49	45.5%	37.6%
50-59	54.5%	46.6%
60-64	70.0%	58.2%
65-69	74.1%	70.0%
70-74	80.3%	74.1%
75-79	76.1%	70.7%
80+	74.5%	69.4%

All figures show reported cases of COVID-19 in Butler County as of 1700 EDT 05/18/2021. Due to delays in reporting, the numbers of confirmed and probable cases on all figures are subject to change between reports and confirmed and probable case counts are likely to increase. **This should not be assumed to be the total disease burden of COVID-19 in Butler County only those that have been laboratory confirmed OR meet ODH probable case criteria AND reported to Public Health.

*Data is provisional – only confirmed or probable COVID-19 cases are included in counts. Report reflects time period since the introduction of SARS-CoV-2 into humans, measured in days. Data accessed from the Ohio Disease Reporting System (ODRS) on 05/18/2021 at 1700 EST.

**Deaths are now reconciled to the Ohio Department of Health's available data to avoid discrepancies between the state and local numbers. ODH's protocol has changed to avoid reconciliation errors and now only includes those deaths that have been reconciled with Vital statistics and may not match what has been reported to the CDC which are provisional numbers. This is a lagging indicator and will be multiple weeks behind.

#Data collected from Ohio Impact-SIIS 05/17/2021 ## Map and Table created by the Ohio Department of Health ###Map created by Ohio Department of Health.