

## Butler County General Health District's 62<sup>nd</sup> COVID-19 Update (4/03/2021)

### Confirmed and Probable COVID-19 Cases Reported to Butler County\*

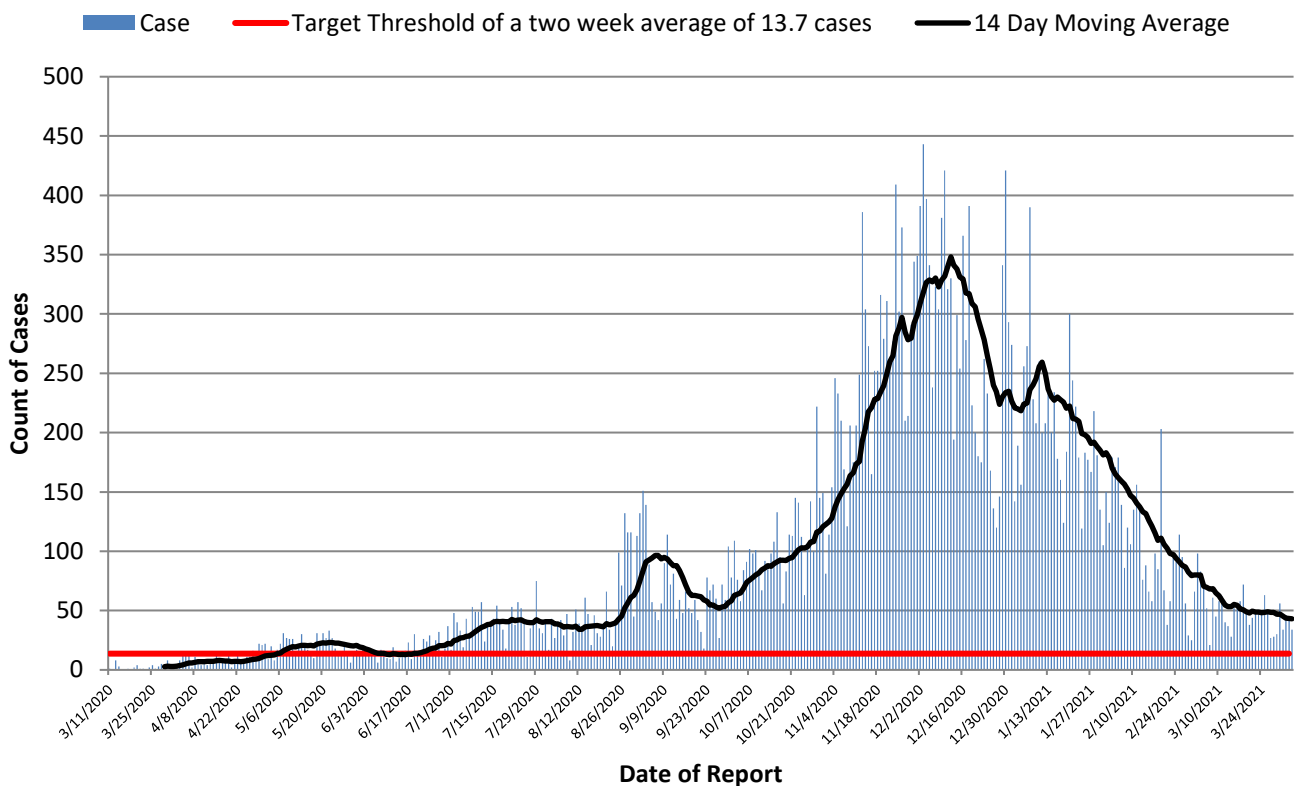
#### Butler County Residents, 2020

Total # of Cases (04/03):	36,902*
ODH verified Deaths (04/03):	563**
Hospitalizations (04/03):	1,162
ICU admissions (04/03):	117
First Case Reported:	3/11/2020
Last Case Reported (so far):	3/27/2021
Confirmed Cases:	33,312
Probable Cases:	3,590
Age Range:	<1-103
Median Age:	40
Mean Age:	41.1
Incidence (thru 04/03):	9,631.6 per 100,000
Prevalence (thru 04/03):	9.6% of BC population

In the following tables and figures, all threshold values are equivalent.

Table 1: Indicators for Reopening for Butler County		
Indicator	Last 2 Weeks	Governor DeWine's Target
<b>Incidence per 100,000 population</b>	<b>157.1 per 100,000</b>	<b>50 per 100,000</b>
Cumulative Case Count	602 per 14 days	191.6 per 14 days
Daily Average of new cases	43 per day through 14 days	13.7 per day through 14 days

Figure 1. Reported Cases of COVID-19 by Date of Report\*



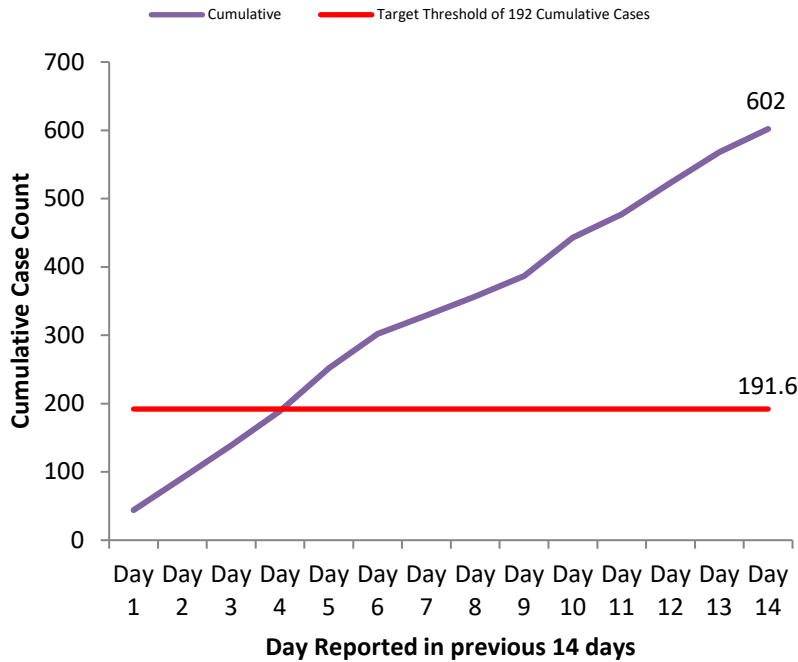
All figures show reported cases of COVID-19 in Butler County as of 1700 EDT 04/3/2021. Due to delays in reporting, the numbers of confirmed and probable cases on all figures are subject to change between reports and confirmed and probable case counts are likely to increase. \*This should not be assumed to be the total disease burden of COVID-19 in Butler County only those that have been laboratory confirmed OR meet ODH probable case criteria AND reported to Public Health.

\*Data is provisional – only confirmed or probable COVID-19 cases are included in counts. Report reflects time period since the introduction of SARS-CoV-2 into humans, measured in days. Data accessed from the Ohio Disease Reporting System (ODRS) on 04/06/2021 at 1700 EST.

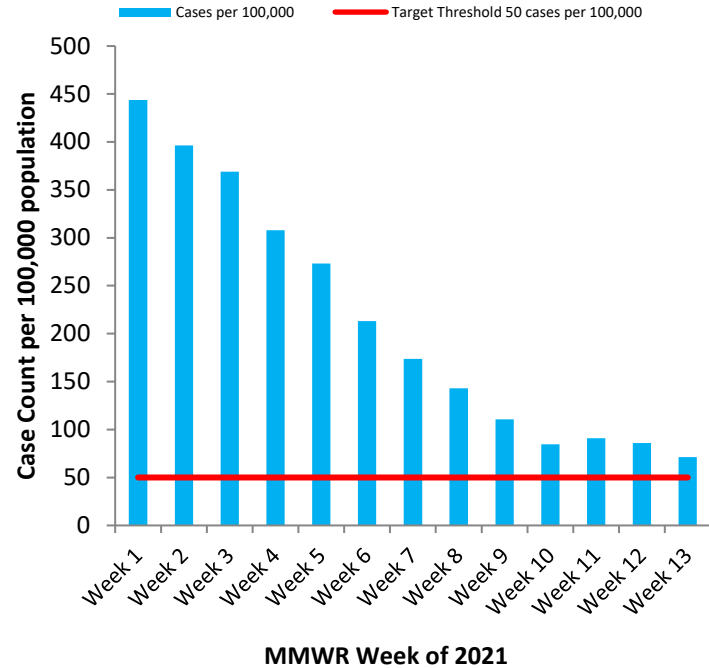
\*\*Deaths are now reconciled to the Ohio Department of Health's available data to avoid discrepancies between the state and local numbers. ODH's protocol has changed to avoid reconciliation errors and now only includes those deaths that have been reconciled with Vital statistics and may not match what has been reported to the CDC which are provisional numbers. This is a lagging indicator and will be multiple weeks behind.

#Data collected from Ohio Impact-SIIS 04/06/2021

**Figure 2. Cumulative Count of Cases of COVID-19 Reported by day previous two weeks**



**Figure 3. Cases per 100,000 population Reported in 2021**



**Table 2: Total Reported\* Cases by ZIP Code**

ZIP Code	Number of Cases	Change from previous week	Incidence per 100,000 thru 04/03	% of Confirmed Cases
45011	6469	↑51 (0.8%) From 6418	9284.3	17.5%
45013	4981	↑45 (0.9%) from 4936	9467.2	13.5%
45044	4891	↑38 (0.8%) from 4853	9259.4	13.3%
45069	4766	↑49 (1.0%) from 4717	9714.6	12.9%
45014	4715	↑25 (0.5%) from 4690	10736.2	12.8%
45056	3163	↑18 (0.6%) from 3145	11698.4	8.6%
45042	2379	↑12 (0.5%) from 2367	8994.0	6.4%
45067	1460	↑13 (0.9%) from 1447	10505.1	4.0%
45050	1126	↑8 (0.7%) from 1118	13172.7	3.1%
45015	979	↑13 (0.4%) from 975	8132.6	2.7%
45241	571	↑7 (1.2%) from 564		1.5%
45053	307	↑4 (1.3%) from 303	8976.6	0.8%
45064	140	↓1 (-0.7%) from 141		0.4%
45062	54	0 from 54		0.1%
45246	52	↑1 (2.0%) from 51		0.1%
Cases lacking zip code information or from zip codes with too few cases	849	-	-	2.3%
<b>Butler County (inclusive)</b>	<b>36902</b>	<b>↑275 (0.7%) from 36627</b>	<b>9631.6</b>	<b>100%</b>

Zip-codes not calculated have most of their population outside of Butler County. Rate given for comparison by population and will be higher than the actual amount. Zip-codes with too few cases have been removed for privacy concerns.

Red indicates zip codes where the percentage increase is greater than the increase from the previous week.

All figures show reported cases of COVID-19 in Butler County as of 1700 EDT 04/3/2021. Due to delays in reporting, the numbers of confirmed and probable cases on all figures are subject to change between reports and confirmed and probable case counts are likely to increase. \*This should not be assumed to be the total disease burden of COVID-19 in Butler County only those that have been laboratory confirmed OR meet ODH probable case criteria AND reported to Public Health.

\*Data is provisional – only confirmed or probable COVID-19 cases are included in counts. Report reflects time period since the introduction of SARS-CoV-2 into humans, measured in days. Data accessed from the Ohio Disease Reporting System (ODRS) on 04/06/2021 at 1700 EST.

\*\*Deaths are now reconciled to the Ohio Department of Health's available data to avoid discrepancies between the state and local numbers. ODH's protocol has changed to avoid reconciliation errors and now only includes those deaths that have been reconciled with Vital statistics and may not match what has been reported to the CDC which are provisional numbers. This is a lagging indicator and will be multiple weeks behind.

#Data collected from Ohio Impact-SIIS 04/06/2021

Table 3. New Reports by MMWR Week, 2020

MMWR Week	End of Week	New Cases Reported	New Hospitalizations	New Confirmed Deaths**
11	3/14	6	1	0
12	3/21	10	3	0
13	3/28	11	6	0
14	4/4	44	18	3
15	4/11	50	16	1
16	4/18	43	10	2
17	4/25	55	19	5
18	5/2	99	16	1
19	5/9	131	18	7
20	5/16	134	17	4
21	5/23	184	26	7
22	5/30	111	12	7
23	6/6	113	16	1
24	6/13	89	10	1
25	6/20	115	13	1
26	6/27	167	19	7
27	7/4	198	10	6
28	7/11	286	18	0
29	7/18	260	26	3
30	7/25	269	12	4
31	8/1	274	9	3
32	8/8	242	17	2
33	8/15	264	14	3
34	8/22	264	14	7
35	8/29	545	24	9
36	9/5	770	14	8
37	9/12	498	18	8
38	9/19	368	17	4
39	9/26	380	14	10
40	10/3	505	10	5
41	10/10	590	16	6
42	10/17	682	28	10
43	10/24	770	25	8
44	10/31	910	42	6
45	11/7	1149	48	18
46	11/14	1540	32	13
47	11/21	1807	41	28
48	11/28	2060	50	30
49	12/05	2308	25	28
50	12/12	2700	43	30
51	12/19	2035	52	36
52	12/26	1434	32	37
53	1/2	1703	37	43
1	1/9	1638	27	25
2	1/16	1592	32	23
3	1/23	1442	20	29
4	1/30	1187	23	19
5	2/6	1072	45	14
6	2/13	838	30	14
7	2/20	685	17	11
8	2/27	558	9	8
9	3/06	431	12	4
10	3/13	324	9	2
11	3/20	349	18	2
12	3/27	330	9	0
13	4/3	283	3	0

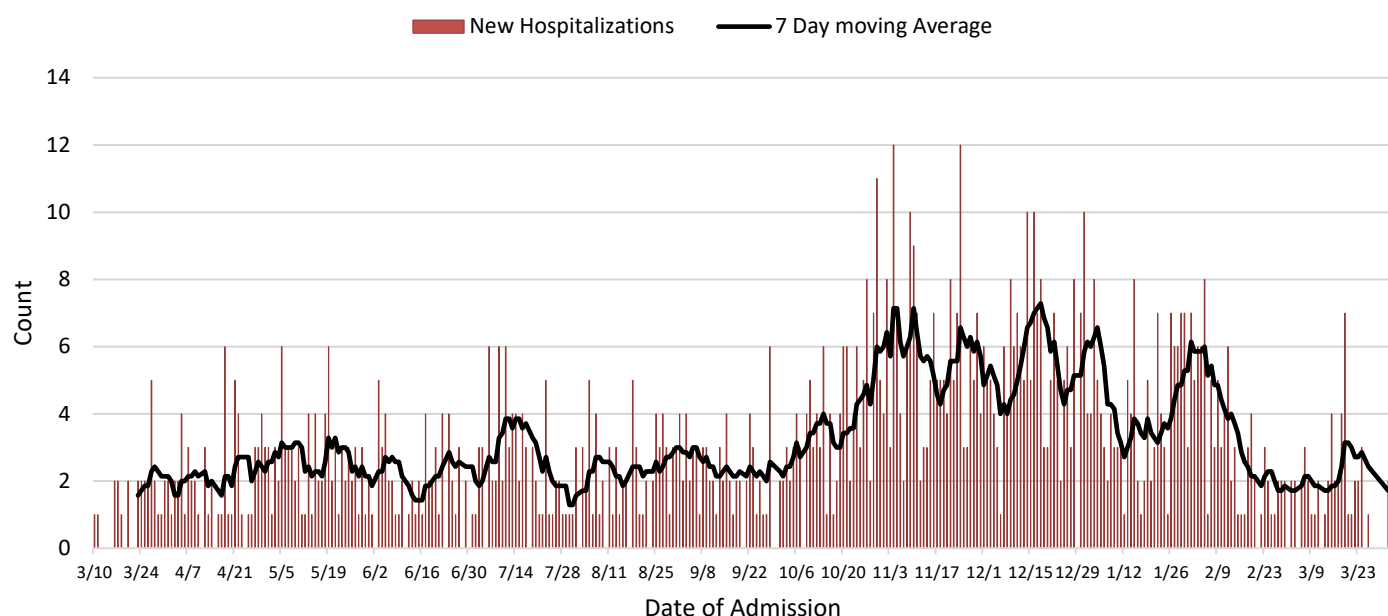
All figures show reported cases of COVID-19 in Butler County as of 1700 EDT 04/3/2021. Due to delays in reporting, the numbers of confirmed and probable cases on all figures are subject to change between reports and confirmed and probable case counts are likely to increase. \*This should not be assumed to be the total disease burden of COVID-19 in Butler County only those that have been laboratory confirmed OR meet ODH probable case criteria AND reported to Public Health.

\*Data is provisional – only confirmed or probable COVID-19 cases are included in counts. Report reflects time period since the introduction of SARS-CoV-2 into humans, measured in days. Data accessed from the Ohio Disease Reporting System (ODRS) on 04/06/2021 at 1700 EST.

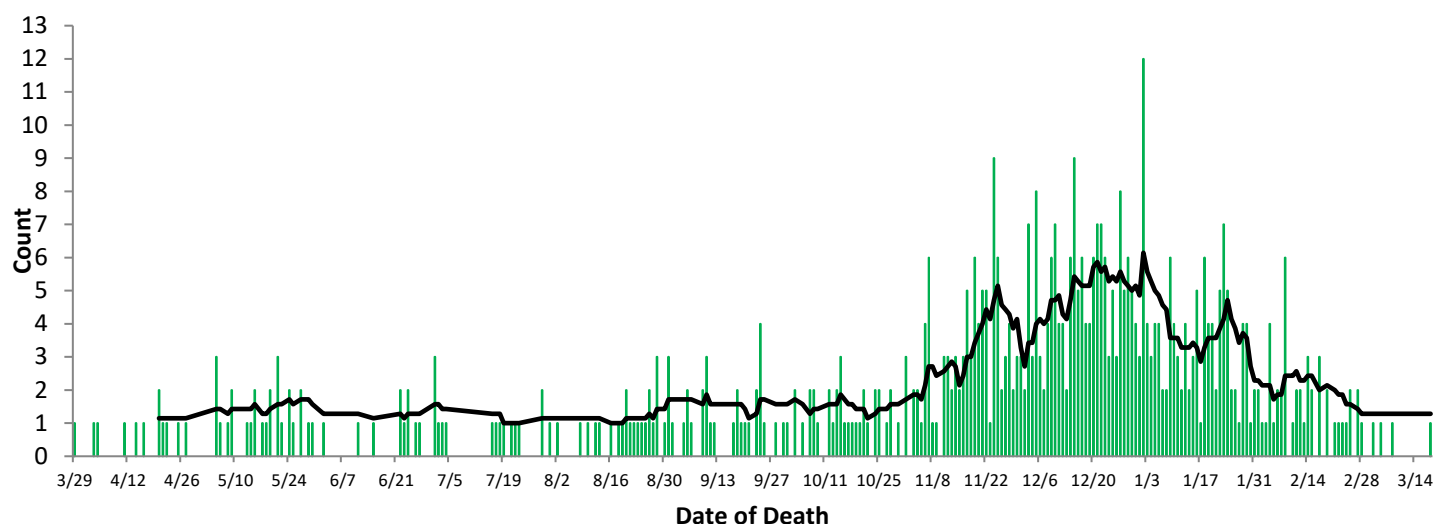
\*\*Deaths are now reconciled to the Ohio Department of Health's available data to avoid discrepancies between the state and local numbers. ODH's protocol has changed to avoid reconciliation errors and now only includes those deaths that have been reconciled with Vital statistics and may not match what has been reported to the CDC which are provisional numbers. This is a lagging indicator and will be multiple weeks behind.

#Data collected from Ohio Impact-SIIS 04/06/2021

**Figure 4. New Hospitalizations of Butler County Residents by Admission Date, 2020-21\***



**Figure 5. Confirmed COVID-19 Deaths by date of death, 2020-21\*\***



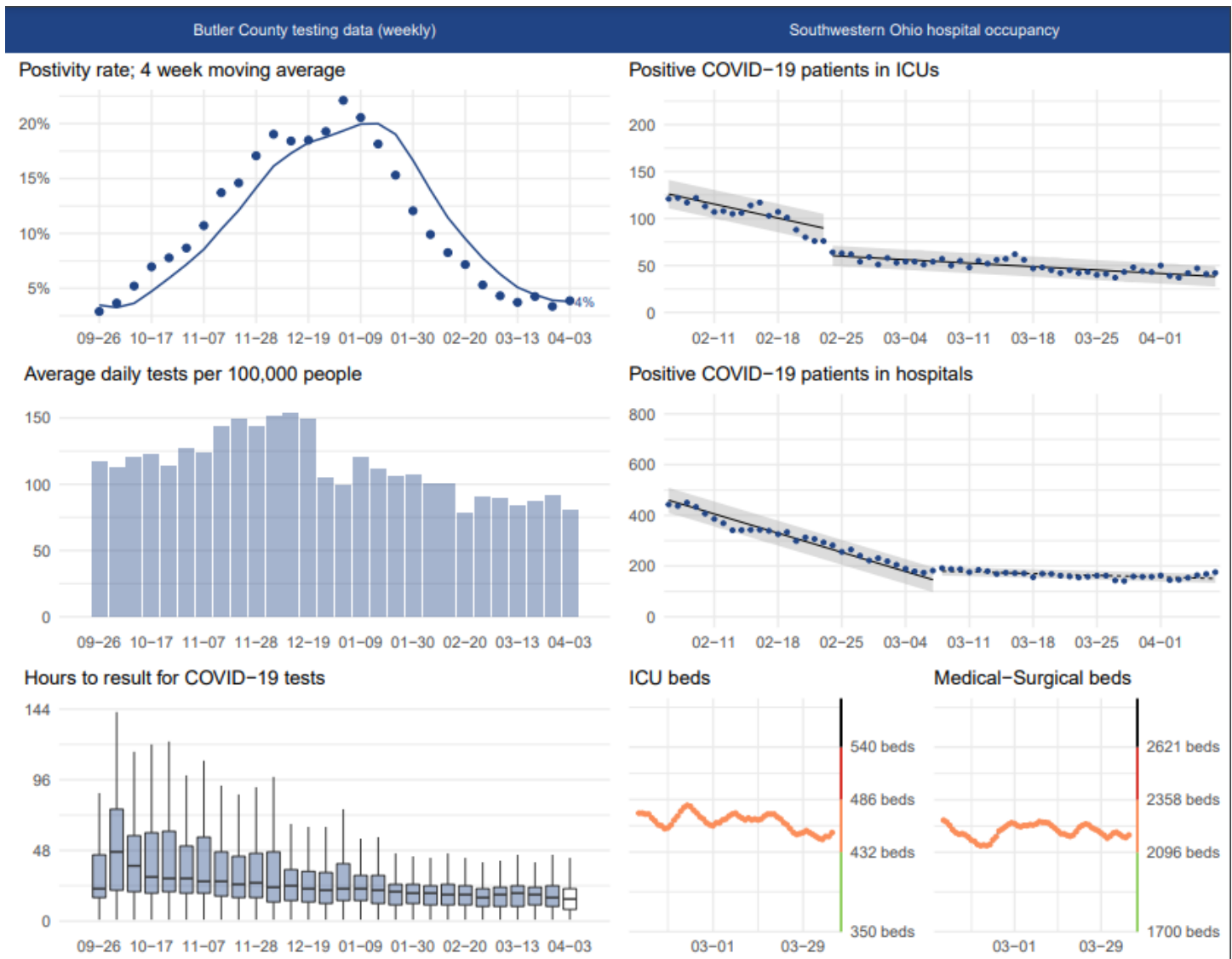
All figures show reported cases of COVID-19 in Butler County as of 1700 EDT 04/3/2021. Due to delays in reporting, the numbers of confirmed and probable cases on all figures are subject to change between reports and confirmed and probable case counts are likely to increase. \*This should not be assumed to be the total disease burden of COVID-19 in Butler County only those that have been laboratory confirmed OR meet ODH probable case criteria AND reported to Public Health.

\*Data is provisional – only confirmed or probable COVID-19 cases are included in counts. Report reflects time period since the introduction of SARS-CoV-2 into humans, measured in days. Data accessed from the Ohio Disease Reporting System (ODRS) on 04/06/2021 at 1700 EST.

\*\*Deaths are now reconciled to the Ohio Department of Health's available data to avoid discrepancies between the state and local numbers. ODH's protocol has changed to avoid reconciliation errors and now only includes those deaths that have been reconciled with Vital statistics and may not match what has been reported to the CDC which are provisional numbers. This is a lagging indicator and will be multiple weeks behind.

#Data collected from Ohio Impact-SIIS 04/06/2021

Figure 6. Butler County Data analysis performed by Cincinnati Children's Hospital



# of Vaccinations Started by BCGHD:	16,956
# of Vaccinations Completed by BCGHD:	3,452
# of Vaccinations Started in Butler County by All Partners:	94,283
# of Vaccinations Completed in Butler County by All Partners:	50,465
# of Vaccines Started in Ohio:	3,255,786
# of Vaccines Completed in Ohio:	1,870,321

All figures show reported cases of COVID-19 in Butler County as of 1700 EDT 04/3/2021. Due to delays in reporting, the numbers of confirmed and probable cases on all figures are subject to change between reports and confirmed and probable case counts are likely to increase. \*This should not be assumed to be the total disease burden of COVID-19 in Butler County only those that have been laboratory confirmed OR meet ODH probable case criteria AND reported to Public Health.

\*Data is provisional – only confirmed or probable COVID-19 cases are included in counts. Report reflects time period since the introduction of SARS-CoV-2 into humans, measured in days. Data accessed from the Ohio Disease Reporting System (ODRS) on 04/06/2021 at 1700 EST.

\*\*Deaths are now reconciled to the Ohio Department of Health's available data to avoid discrepancies between the state and local numbers. ODH's protocol has changed to avoid reconciliation errors and now only includes those deaths that have been reconciled with Vital statistics and may not match what has been reported to the CDC which are provisional numbers. This is a lagging indicator and will be multiple weeks behind.

#Data collected from Ohio Impact-SIIS 04/06/2021