

Butler County General Health District's 63rd COVID-19 Update (4/10/2021)

Confirmed and Probable COVID-19 Cases Reported to Butler County*

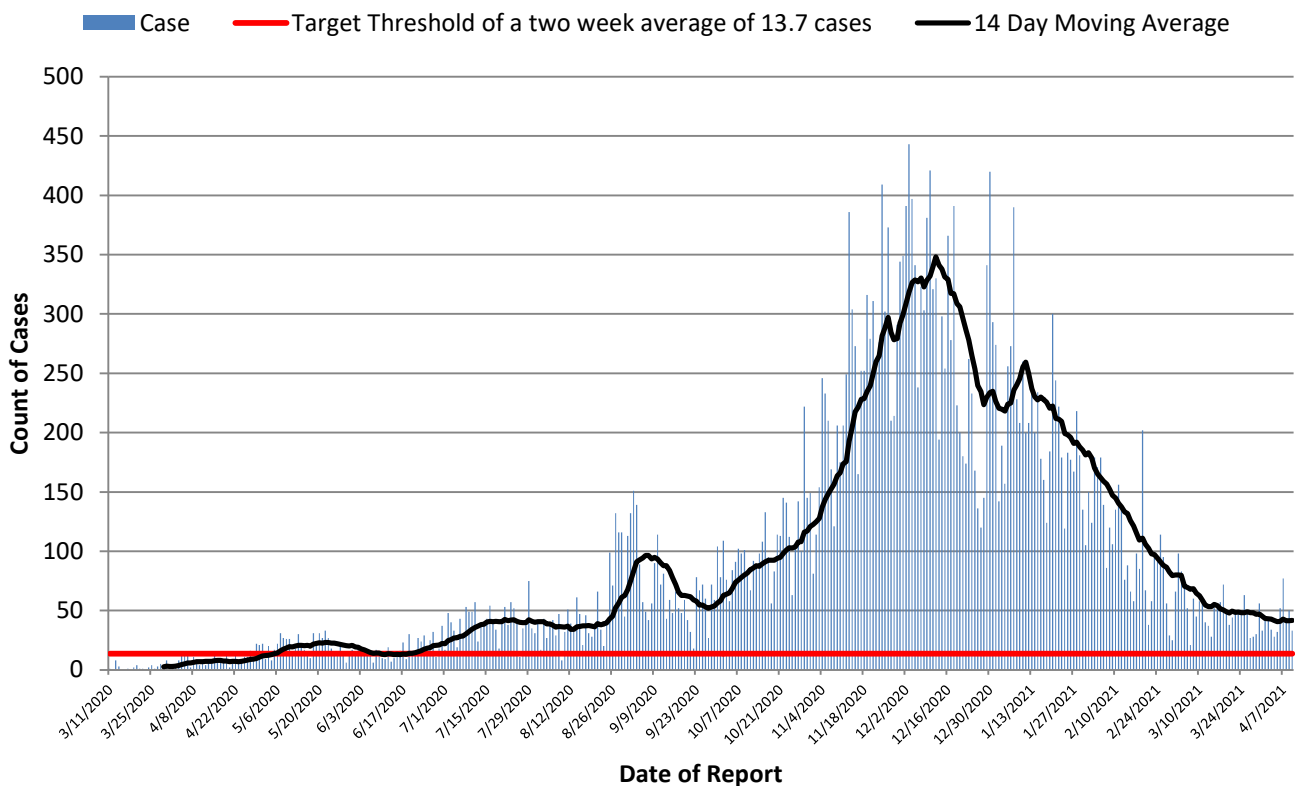
Butler County Residents, 2020

Total # of Cases (04/10):	37,207*
ODH verified Deaths (04/10):	568**
Hospitalizations (04/10):	1,204
ICU admissions (04/10):	117
First Case Reported:	3/11/2020
Last Case Reported (so far):	4/10/2021
Confirmed Cases:	33,555
Probable Cases:	3,652
Age Range:	<1-103
Median Age:	40
Mean Age:	41.1
Incidence (thru 04/10):	9,664.2 per 100,000
Prevalence (thru 04/10):	9.7% of BC population

In the following tables and figures, all threshold values are equivalent.

Table 1: Indicators for Reopening for Butler County		
Indicator	Last 2 Weeks	Governor DeWine's Target
Incidence per 100,000 population	152.7 per 100,000	50 per 100,000
Cumulative Case Count	585 per 14 days	191.6 per 14 days
Daily Average of new cases	41.8 per day through 14 days	13.7 per day through 14 days

Figure 1. Reported Cases of COVID-19 by Date of Report*



All figures show reported cases of COVID-19 in Butler County as of 1700 EDT 04/12/2021. Due to delays in reporting, the numbers of confirmed and probable cases on all figures are subject to change between reports and confirmed and probable case counts are likely to increase. *This should not be assumed to be the total disease burden of COVID-19 in Butler County only those that have been laboratory confirmed OR meet ODH probable case criteria AND reported to Public Health.

*Data is provisional – only confirmed or probable COVID-19 cases are included in counts. Report reflects time period since the introduction of SARS-CoV-2 into humans, measured in days. Data accessed from the Ohio Disease Reporting System (ODRS) on 04/12/2021 at 1700 EST.

**Deaths are now reconciled to the Ohio Department of Health's available data to avoid discrepancies between the state and local numbers. ODH's protocol has changed to avoid reconciliation errors and now only includes those deaths that have been reconciled with Vital statistics and may not match what has been reported to the CDC which are provisional numbers. This is a lagging indicator and will be multiple weeks behind.

#Data collected from Ohio Impact-SIIS 04/11/2021

Figure 2. Cumulative Count of Cases of COVID-19 Reported by day previous two weeks

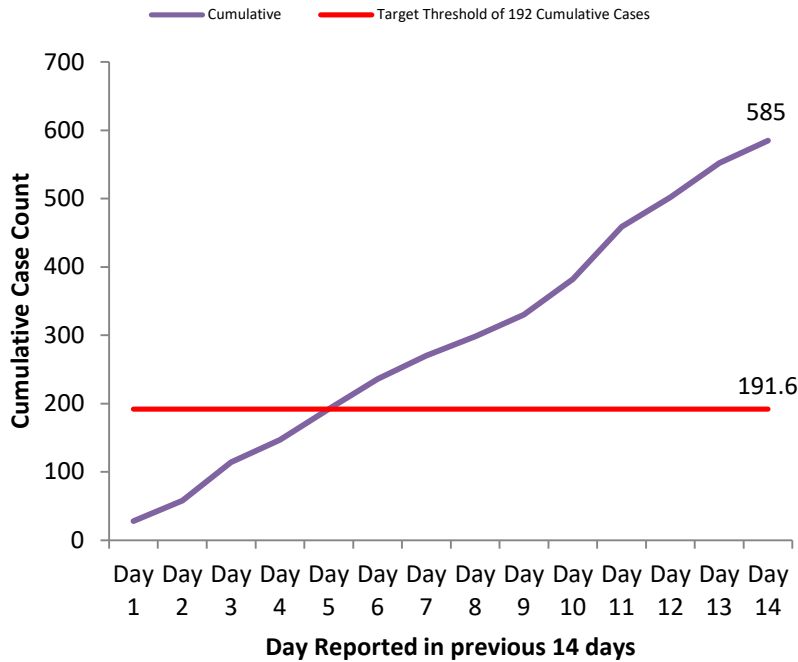


Figure 3. Cases per 100,000 population Reported in 2021

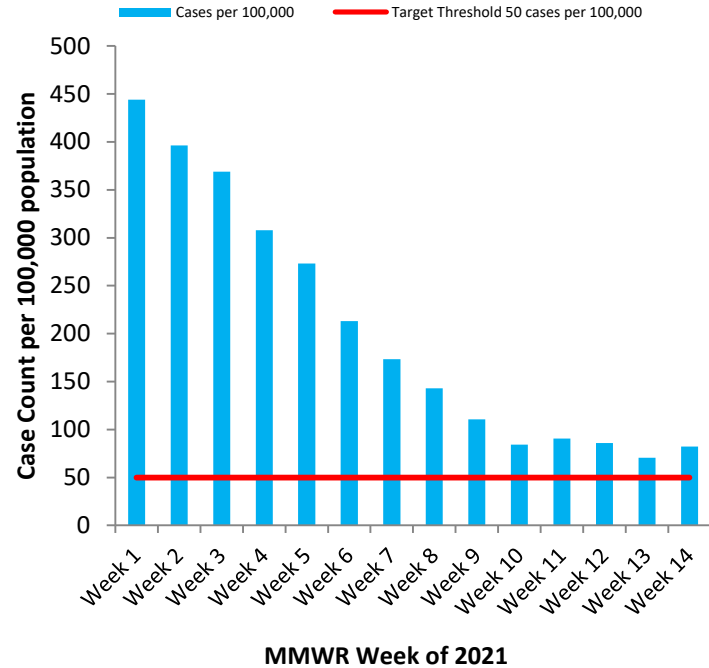


Table 2: Total Reported* Cases by ZIP Code

ZIP Code	Number of Cases	Change from previous week	Incidence per 100,000 thru 04/10	% of Confirmed Cases
45011	6529	↑60 (0.9%) From 6469	9370.4	17.5%
45013	5024	↑43 (0.9%) from 4981	9549.0	13.5%
45044	4936	↑ 45 (0.9%) from 4891	9344.6	13.3%
45069	4822	↑ 56 (1.2%) from 4766	9828.8	13.0%
45014	4754	↑39 (0.8%) from 4715	10825.0	12.8%
45056	3165	↑2 (0.1%) from 3163	11705.7	8.5%
45042	2409	↑ 30 (1.3%) from 2379	9107.4	6.5%
45067	1472	↑12 (0.8%) from 1460	10591.5	4.0%
45050	1135	↑9 (0.8%) from 1126	13278.0	3.1%
45015	984	↑5 (0.5%) from 979	8174.1	2.6%
45241	573	↑2 (0.4%) from 571		1.5%
45053	309	↑ 2 (0.7%) from 307	9035.1	0.8%
45064	140	0 (0%) from 140		0.4%
45062	56	↑2 (3.7%) from 56		0.2%
45246	52	↑0 (0%) from 52		0.1%
Cases lacking zip code information or from zip codes with too few cases	847	-	-	2.3%
Butler County (inclusive)	37207	↑305 (0.8%) from 36902	9664.2	100%

Zip-codes not calculated have most of their population outside of Butler County. Rate given for comparison by population and will be higher than the actual amount. Zip-codes with too few cases have been removed for privacy concerns.

Red indicates zip codes where the percentage increase is greater than the increase from the previous week.

All figures show reported cases of COVID-19 in Butler County as of 1700 EDT 04/12/2021. Due to delays in reporting, the numbers of confirmed and probable cases on all figures are subject to change between reports and confirmed and probable case counts are likely to increase. *This should not be assumed to be the total disease burden of COVID-19 in Butler County only those that have been laboratory confirmed OR meet ODH probable case criteria AND reported to Public Health.

*Data is provisional – only confirmed or probable COVID-19 cases are included in counts. Report reflects time period since the introduction of SARS-CoV-2 into humans, measured in days. Data accessed from the Ohio Disease Reporting System (ODRS) on 04/12/2021 at 1700 EST.

**Deaths are now reconciled to the Ohio Department of Health's available data to avoid discrepancies between the state and local numbers. ODH's protocol has changed to avoid reconciliation errors and now only includes those deaths that have been reconciled with Vital statistics and may not match what has been reported to the CDC which are provisional numbers. This is a lagging indicator and will be multiple weeks behind.

#Data collected from Ohio Impact-SIIS 04/11/2021

Table 3. New Reports by MMWR Week, 2020

MMWR Week	End of Week	New Cases Reported	New Hospitalizations	New Confirmed Deaths**
11	3/14	6	1	0
12	3/21	10	3	0
13	3/28	11	6	0
14	4/4	44	18	3
15	4/11	50	16	1
16	4/18	43	10	2
17	4/25	55	19	5
18	5/2	99	16	1
19	5/9	131	18	7
20	5/16	134	17	4
21	5/23	184	26	7
22	5/30	111	12	7
23	6/6	113	16	1
24	6/13	89	10	1
25	6/20	115	13	1
26	6/27	167	19	7
27	7/4	198	10	6
28	7/11	286	18	0
29	7/18	260	26	3
30	7/25	269	12	4
31	8/1	274	9	3
32	8/8	242	17	2
33	8/15	264	14	3
34	8/22	264	14	7
35	8/29	545	24	9
36	9/5	770	14	8
37	9/12	498	18	8
38	9/19	368	17	4
39	9/26	380	14	10
40	10/3	505	10	5
41	10/10	590	16	6
42	10/17	682	28	10
43	10/24	770	25	8
44	10/31	910	42	6
45	11/7	1148	48	18
46	11/14	1540	33	13
47	11/21	1807	41	28
48	11/28	2060	50	30
49	12/05	2308	25	28
50	12/12	2698	43	30
51	12/19	2035	51	36
52	12/26	1432	32	37
53	1/2	1701	43	43
1	1/9	1638	30	25
2	1/16	1592	32	23
3	1/23	1442	20	29
4	1/30	1187	23	20
5	2/6	1072	46	14
6	2/13	838	30	14
7	2/20	684	17	11
8	2/27	558	9	8
9	3/06	431	12	4
10	3/13	324	9	2
11	3/20	348	18	3
12	3/27	330	9	1
13	4/3	271	14	1
14	4/10	326	21	1

All figures show reported cases of COVID-19 in Butler County as of 1700 EDT 04/12/2021. Due to delays in reporting, the numbers of confirmed and probable cases on all figures are subject to change between reports and confirmed and probable case counts are likely to increase. **This should not be assumed to be the total disease burden of COVID-19 in Butler County only those that have been laboratory confirmed OR meet ODH probable case criteria AND reported to Public Health.

*Data is provisional – only confirmed or probable COVID-19 cases are included in counts. Report reflects time period since the introduction of SARS-CoV-2 into humans, measured in days. Data accessed from the Ohio Disease Reporting System (ODRS) on 04/12/2021 at 1700 EST.

**Deaths are now reconciled to the Ohio Department of Health's available data to avoid discrepancies between the state and local numbers. ODH's protocol has changed to avoid reconciliation errors and now only includes those deaths that have been reconciled with Vital statistics and may not match what has been reported to the CDC which are provisional numbers. This is a lagging indicator and will be multiple weeks behind.

#Data collected from Ohio Impact-SIIS 04/11/2021

Figure 4. New Hospitalizations of Butler County Residents by Admission Date, 2020-21*

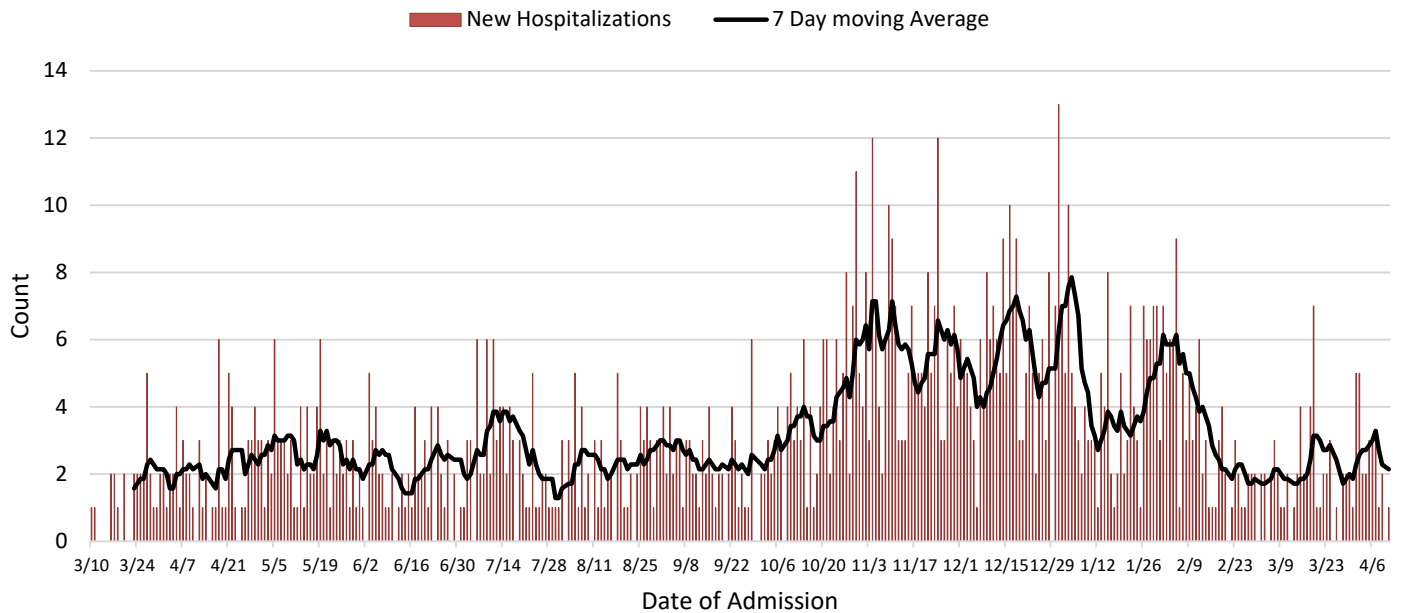
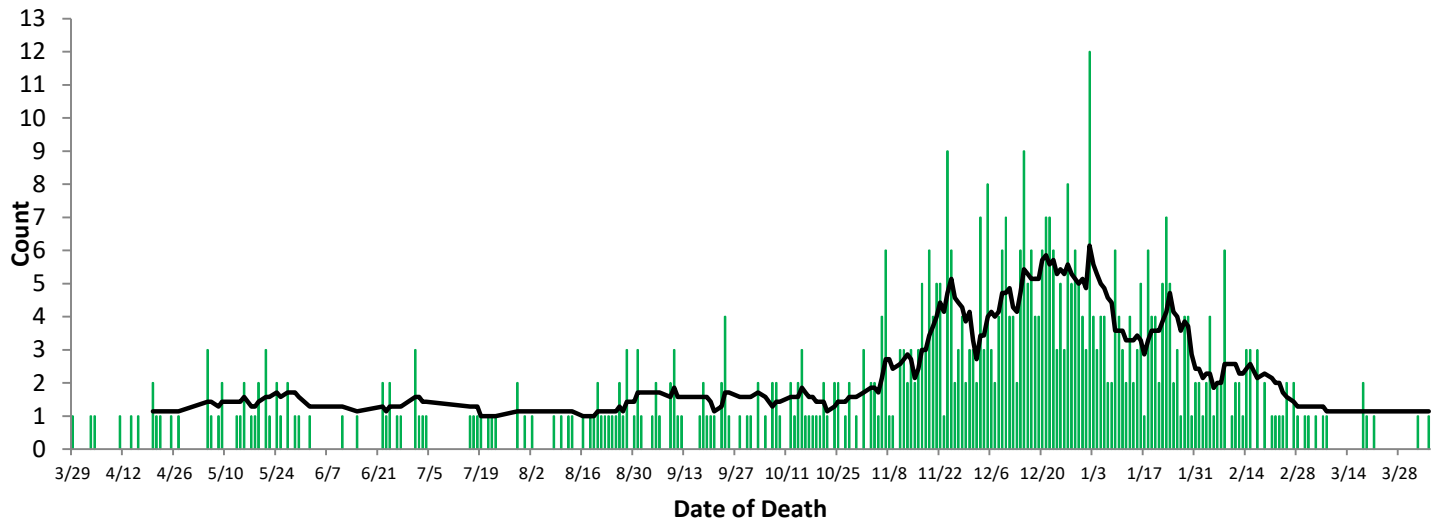


Figure 5. Confirmed COVID-19 Deaths by date of death, 2020-21**



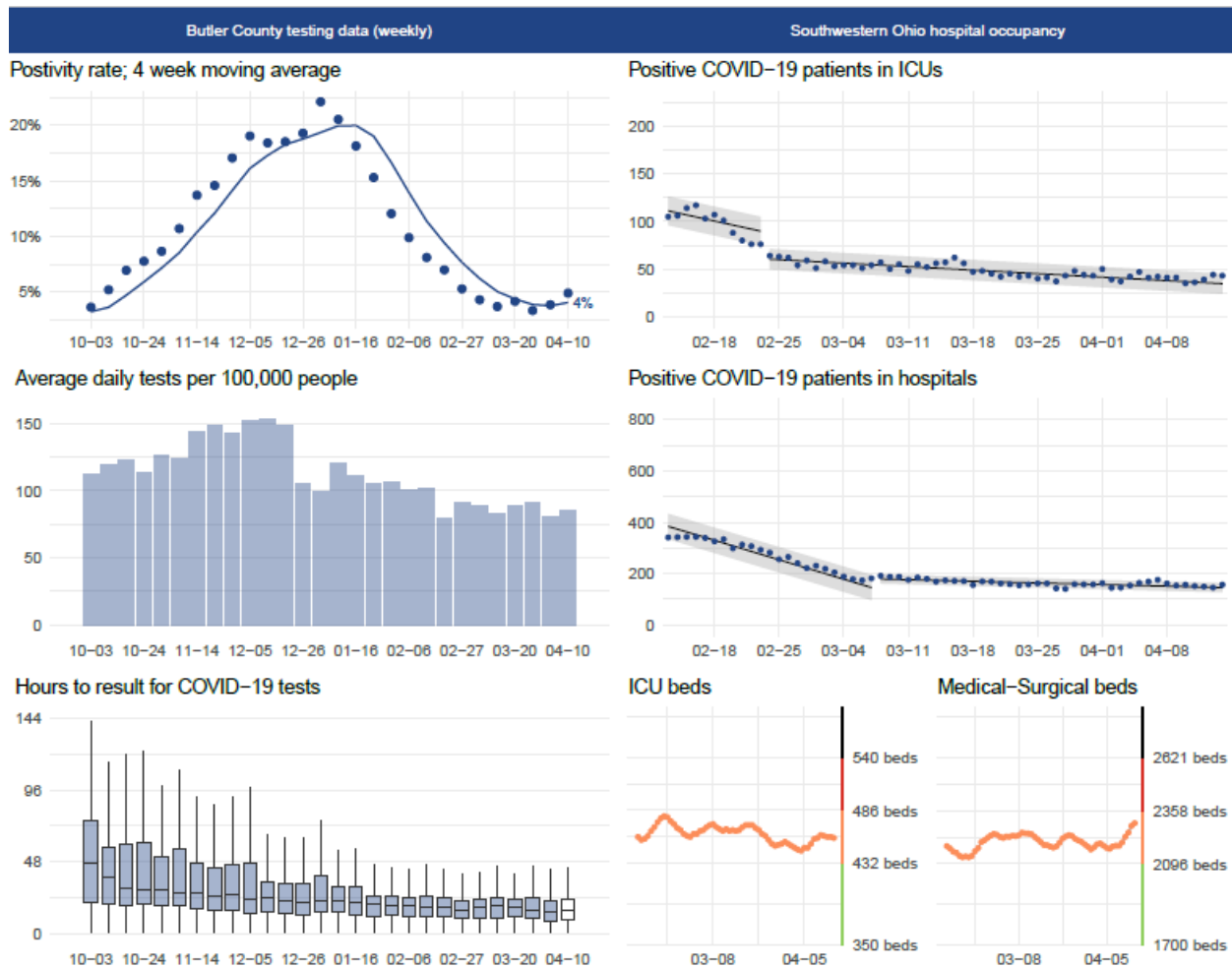
All figures show reported cases of COVID-19 in Butler County as of 1700 EDT 04/12/2021. Due to delays in reporting, the numbers of confirmed and probable cases on all figures are subject to change between reports and confirmed and probable case counts are likely to increase. **This should not be assumed to be the total disease burden of COVID-19 in Butler County only those that have been laboratory confirmed OR meet ODH probable case criteria AND reported to Public Health.

*Data is provisional – only confirmed or probable COVID-19 cases are included in counts. Report reflects time period since the introduction of SARS-CoV-2 into humans, measured in days. Data accessed from the Ohio Disease Reporting System (ODRS) on 04/12/2021 at 1700 EST.

**Deaths are now reconciled to the Ohio Department of Health's available data to avoid discrepancies between the state and local numbers. ODH's protocol has changed to avoid reconciliation errors and now only includes those deaths that have been reconciled with Vital statistics and may not match what has been reported to the CDC which are provisional numbers. This is a lagging indicator and will be multiple weeks behind.

#Data collected from Ohio Impact-SIIS 04/11/2021

Figure 6. Butler County Data analysis performed by Cincinnati Children's Hospital



Total # of Vaccinations by BCGHD:	23,809
# of Vaccinations Started by BCGHD:	18,331
# of Vaccinations Completed by BCGHD:	5,478
# of Vaccinations Started in Butler County by All Partners:	120,321
# of Vaccinations Completed in Butler County by All Partners:	69,847
# of Vaccines Started in Ohio:	4,076,646
# of Vaccines Completed in Ohio:	2,581,255

All figures show reported cases of COVID-19 in Butler County as of 1700 EDT 04/12/2021. Due to delays in reporting, the numbers of confirmed and probable cases on all figures are subject to change between reports and confirmed and probable case counts are likely to increase. **This should not be assumed to be the total disease burden of COVID-19 in Butler County only those that have been laboratory confirmed OR meet ODH probable case criteria AND reported to Public Health.

*Data is provisional – only confirmed or probable COVID-19 cases are included in counts. Report reflects time period since the introduction of SARS-CoV-2 into humans, measured in days. Data accessed from the Ohio Disease Reporting System (ODRS) on 04/12/2021 at 1700 EST.

**Deaths are now reconciled to the Ohio Department of Health's available data to avoid discrepancies between the state and local numbers. ODH's protocol has changed to avoid reconciliation errors and now only includes those deaths that have been reconciled with Vital statistics and may not match what has been reported to the CDC which are provisional numbers. This is a lagging indicator and will be multiple weeks behind.

#Data collected from Ohio Impact-SIIS 04/11/2021