

## Butler County General Health District's 106<sup>th</sup> COVID-19 Update (03/05/2022)

### Confirmed and Probable COVID-19 Cases Reported to Butler County\*

#### Butler County Residents, 2020-22

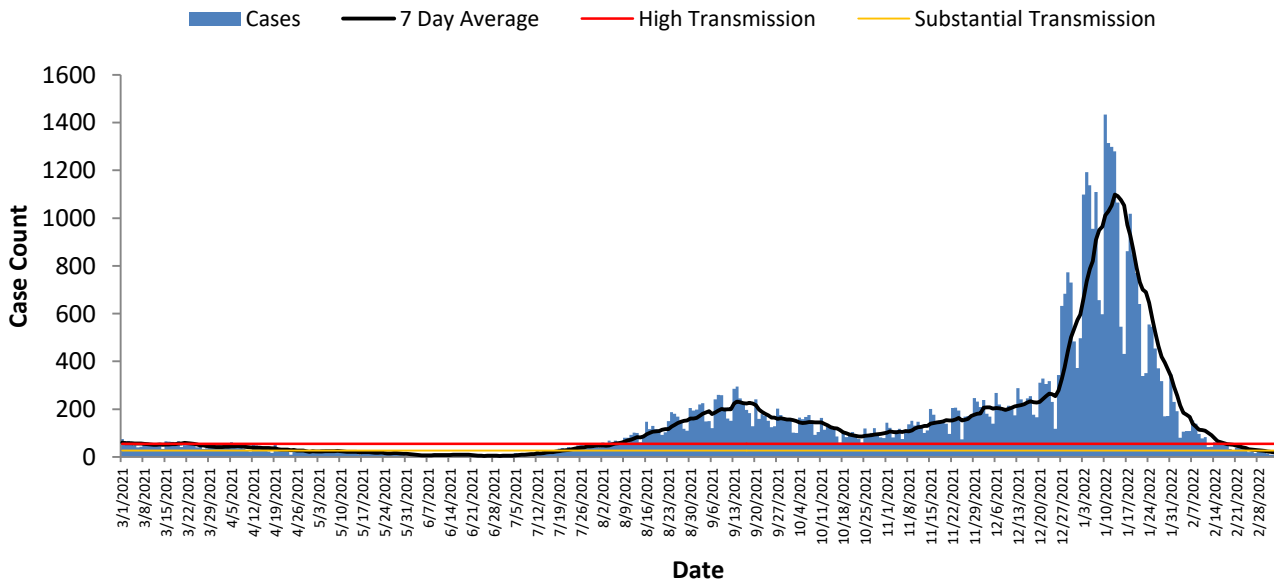
<b>Total # of Cases (03/05):</b>	<b>91,892*</b>
<b>ODH verified Deaths (03/05):</b>	<b>1,099**</b>
<b>Hospitalizations (03/05):</b>	<b>3,174</b>
<b>First Case Reported:</b>	3/11/2020
<b>Last Case Reported (so far):</b>	03/05/2022
<b>Confirmed Cases:</b>	<b>70,550</b>
<b>Probable Cases:</b>	<b>21,342</b>
<b>Age Range:</b>	<1-103
<b>Median Age:</b>	<b>37</b>
<b>Mean Age:</b>	38.3
<b>Incidence (thru 03/05):</b>	23,984.3 per 100,000
<b>Prevalence (thru 03/05):</b>	<b>24.0% of BC population</b>
<b>7-Day Positivity Rate (03/10):</b>	<b>3.9%# of tests performed in BC</b>

Table 1: CDC Indicators		
Indicator	Butler County New Cases over 7 days	Status Level According to CDC
<b>Community Level</b>	-	<b>Low</b>
Positivity Rate	3.91% of tests performed in Butler County	Low Positivity (<5.00% of tests)
Incidence per 100,000 population	34.1 per 100,000	Moderate Spread (10.0-49.99 per 100,000)

The Butler County General Health District will continue to monitor transmission levels based on previous CDC indicators; however, generalized guidance will now be based on the CDC's Community Level indicators. Cases dropped another 38% at this week, and the drops over the past four weeks appear to be constant.

Butler County is now at Low Community levels and Moderate Transmission levels per CDC indicators.

**Figure 1. Cases by Date of Event Since March 1, 2021**



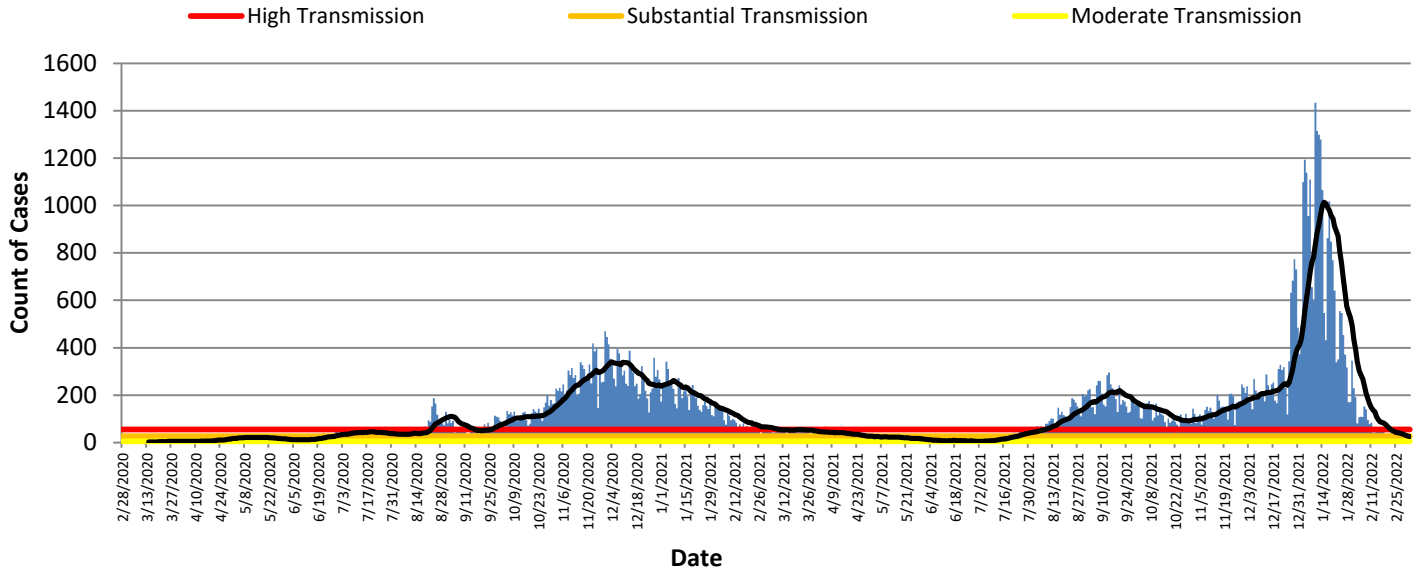
All figures show reported cases of COVID-19 in Butler County as of 0800 EST 03/10/2022. Due to delays in reporting, the numbers of confirmed and probable cases on all figures are subject to change between reports and confirmed and probable case counts are likely to increase. \*This should not be assumed to be the total disease burden of COVID-19 in Butler County only those that have been laboratory confirmed OR meet ODH probable case criteria AND reported to Public Health.

\*Data is provisional – only confirmed or probable COVID-19 cases are included in counts. Report reflects time period since the introduction of SARS-CoV-2 into humans, measured in days. Data accessed from the Ohio Disease Reporting System (ODRS) on 03/10/2022 at 0800 EST.

\*\*Deaths are now reconciled to the Ohio Department of Health's available data to avoid discrepancies between the state and local numbers. ODH's protocol has changed to avoid reconciliation errors and now only includes those deaths that have been reconciled with Vital statistics and may not match what has been reported to the CDC which are provisional numbers. This is a lagging indicator and will be multiple weeks behind.

#Gathered from CDC's Data Tracker of Butler County 03/10/2022 0800 EST accessible at <https://covid.cdc.gov/covid-data-tracker/#county-view>

Figure 2. Reported Cases of COVID-19 by Date of Event 2020-2022\*



ZIP Code	Number of Cases	New Cases (02/27-03/05)	Change in cases from previous 7 days (02/20-02/26)	Transmission	% of Cases
45011	16839	24	-11 (-31.4%)	Moderate	18.3%
45044	13111	27	-6 (-18.2%)	Substantial	14.3%
45013	12443	9	-26 (-74.3%)	Moderate	13.5%
45069	12030	30	-9 (-23.1%)	Substantial	13.1%
45014	10946	7	-12 (-63.2%)	Moderate	11.9%
45056	5994	22	-5 (-18.5%)	Substantial	6.5%
45042	6204	2	-6 (-75.0%)	Low	6.8%
45067	3754	3	-2 (-40.0%)	Moderate	4.1%
45050	2662	2	1 (100%)	Moderate	2.9%
45015	2662	1	-3 (-75.0%)	Low	2.9%
45241	1374	1	-2 (-66.7%)		1.5%
45053	679	1	1(NA%)	Moderate	0.7%
45005	589	2	1(100.0%)		0.6%
45064	367	1	1(0%)		0.4%
45246	171	0	0 (0%)		0.2%
45062	138	0	0 (0%)		0.2%
Cases lacking zip code information or from zip codes with too few cases	1,929	1	-	-	2.1%
<b>Butler County (inclusive)</b>	<b>91,892</b>	<b>133</b>	<b>-84 (-38.71%)</b>	<b>Substantial</b>	<b>100%</b>

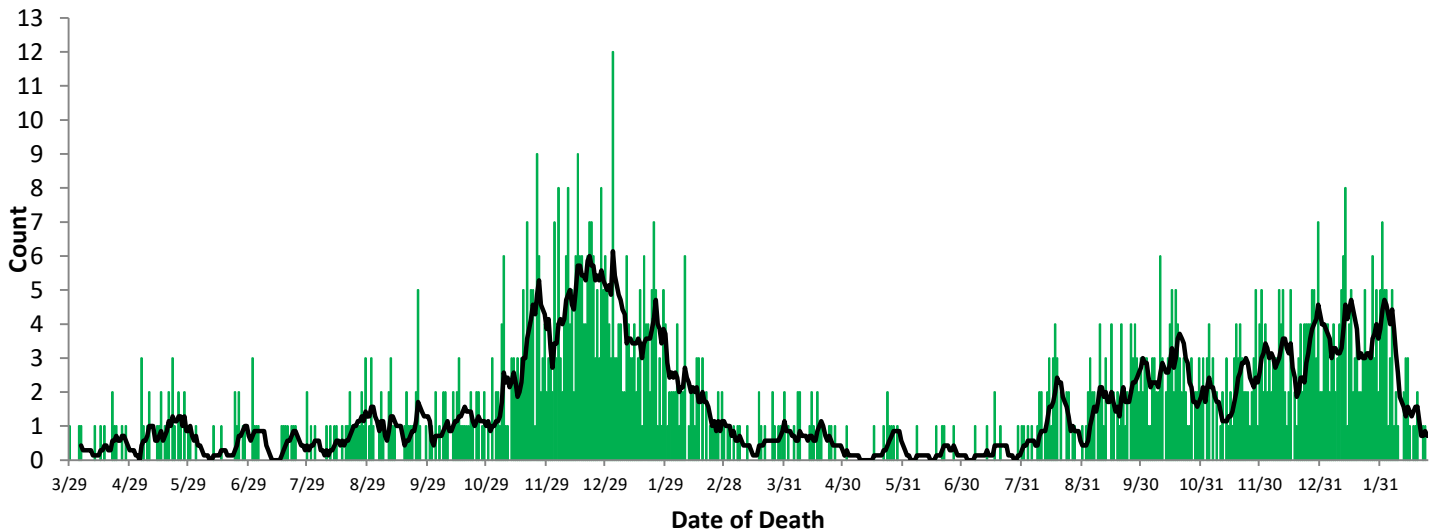
Zip-codes that have transmissions not rated have most of their populations outside of Butler County. Zip-codes with too few cases have been removed for privacy concerns.

**New Cases are determined by "Date of Event" which is when the case was ill/test was collected. CDC determines new cases by "Date of Report".**

Table 2 shows the zip-code level data that is new for this week. No zip codes are in high transmission this week.

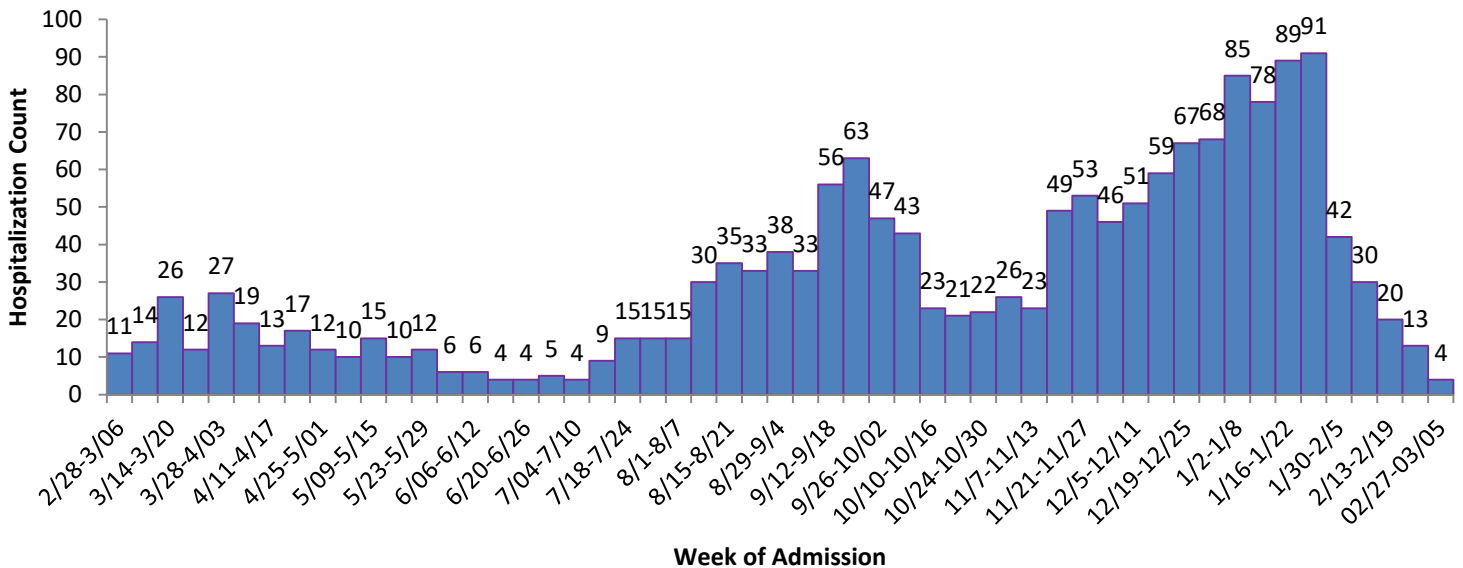
All figures show reported cases of COVID-19 in Butler County as of 0800 EST 03/10/2022. Due to delays in reporting, the numbers of confirmed and probable cases on all figures are subject to change between reports and confirmed and probable case counts are likely to increase. \*This should not be assumed to be the total disease burden of COVID-19 in Butler County only those that have been laboratory confirmed OR meet ODH probable case criteria AND reported to Public Health.  
 \*Data is provisional – only confirmed or probable COVID-19 cases are included in counts. Report reflects time period since the introduction of SARS-CoV-2 into humans, measured in days. Data accessed from the Ohio Disease Reporting System (ODRS) on 03/10/2022 at 0800 EST.  
 \*\*Deaths are now reconciled to the Ohio Department of Health’s available data to avoid discrepancies between the state and local numbers. ODH’s protocol has changed to avoid reconciliation errors and now only includes those deaths that have been reconciled with Vital statistics and may not match what has been reported to the CDC which are provisional numbers. This is a lagging indicator and will be multiple weeks behind.  
 #Gathered from CDC’s Data Tracker of Butler County 03/10/2022 0800 EST accessible at <https://covid.cdc.gov/covid-data-tracker/#county-view>

**Figure 3. Confirmed COVID-19 Deaths by date of death, 2020-22\*\***



Figures 3 and 4 show severe case outcomes. These are both lagging indicators since it typically takes time for a case to succumb to COVID and well over a month for a COVID-19 death to be verified. Deaths will take about 4-6 weeks to begin to register for last week. Hospitalizations are currently declining, and death reports from the omicron surge are still coming in, but it appears to be tapering off.

**Figure 4. COVID-19 Hospitalizations of Butler County Residents by Week since the first week of March 2021**



All figures show reported cases of COVID-19 in Butler County as of 0800 EST 03/10/2022. Due to delays in reporting, the numbers of confirmed and probable cases on all figures are subject to change between reports and confirmed and probable case counts are likely to increase. \*This should not be assumed to be the total disease burden of COVID-19 in Butler County only those that have been laboratory confirmed OR meet ODH probable case criteria AND reported to Public Health. \*Data is provisional – only confirmed or probable COVID-19 cases are included in counts. Report reflects time period since the introduction of SARS-CoV-2 into humans, measured in days. Data accessed from the Ohio Disease Reporting System (ODRS) on 03/10/2022 at 0800 EST. \*\*Deaths are now reconciled to the Ohio Department of Health’s available data to avoid discrepancies between the state and local numbers. ODH’s protocol has changed to avoid reconciliation errors and now only includes those deaths that have been reconciled with Vital statistics and may not match what has been reported to the CDC which are provisional numbers. This is a lagging indicator and will be multiple weeks behind. #Gathered from CDC’s Data Tracker of Butler County 03/10/2022 0800 EST accessible at <https://covid.cdc.gov/covid-data-tracker/#county-view>