

Butler County General Health District COVID-19 Update (3/27/2021)

Confirmed and Probable COVID-19 Cases Reported to Butler County*

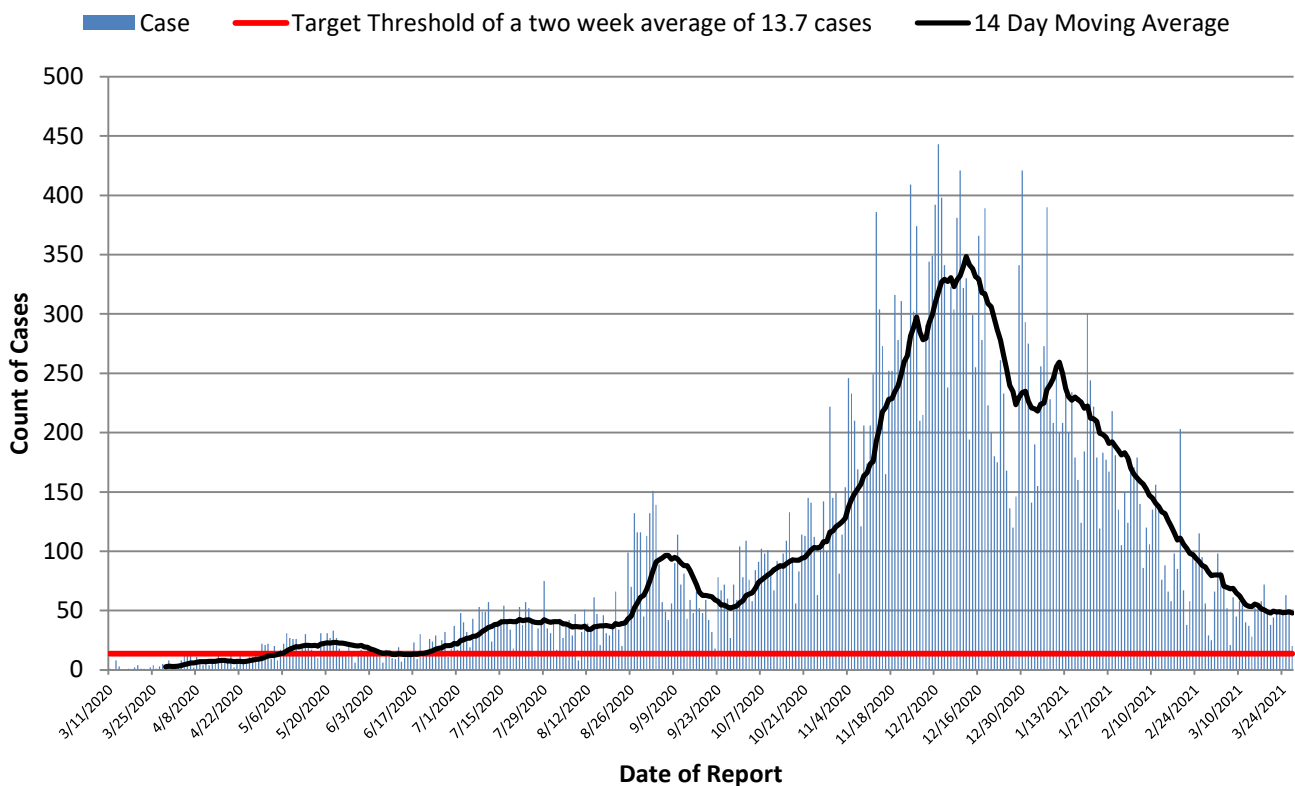
Butler County Residents, 2020

Total # of Cases (03/27):	36,627*
ODH verified Deaths (03/27):	558**
Hospitalizations (03/27):	1,141
ICU admissions (03/27):	114
First Case Reported:	3/11/2020
Last Case Reported (so far):	3/27/2021
Confirmed Cases:	33,081
Probable Cases:	3,546
Age Range:	<1-103
Median Age:	40
Mean Age:	41.1
Incidence (thru 03/27):	9,559.8 per 100,000
Prevalence (thru 03/27):	9.6% of BC population

In the following tables and figures, all threshold values are equivalent.

Table 1: Indicators for Reopening for Butler County		
Indicator	Last 2 Weeks	Governor DeWine's Target
Incidence per 100,000 population	174.6 per 100,000	50 per 100,000
Cumulative Case Count	669 per 14 days	191.6 per 14 days
Daily Average of new cases	47.8 per day through 14 days	13.7 per day through 14 days

Figure 1. Reported Cases of COVID-19 by Date of Report*



All figures show reported cases of COVID-19 in Butler County as of 1700 EDT 03/31/2021. Due to delays in reporting, the numbers of confirmed and probable cases on all figures are subject to change between reports and confirmed and probable case counts are likely to increase. *This should not be assumed to be the total disease burden of COVID-19 in Butler County only those that have been laboratory confirmed OR meet ODH probable case criteria AND reported to Public Health.

*Data is provisional – only confirmed or probable COVID-19 cases are included in counts. Report reflects time period since the introduction of SARS-CoV-2 into humans, measured in days. Data accessed from the Ohio Disease Reporting System (ODRS) on 03/31/2021 at 1700 EST.

**Deaths are now reconciled to the Ohio Department of Health's available data to avoid discrepancies between the state and local numbers. ODH's protocol has changed to avoid reconciliation errors and now only includes those deaths that have been reconciled with Vital statistics and may not match what has been reported to the CDC which are provisional numbers. This is a lagging indicator and will be multiple weeks behind.

#Data collected from Ohio Impact-SIIS 03/31/2021

Figure 2. Cumulative Count of Cases of COVID-19 Reported by day previous two weeks

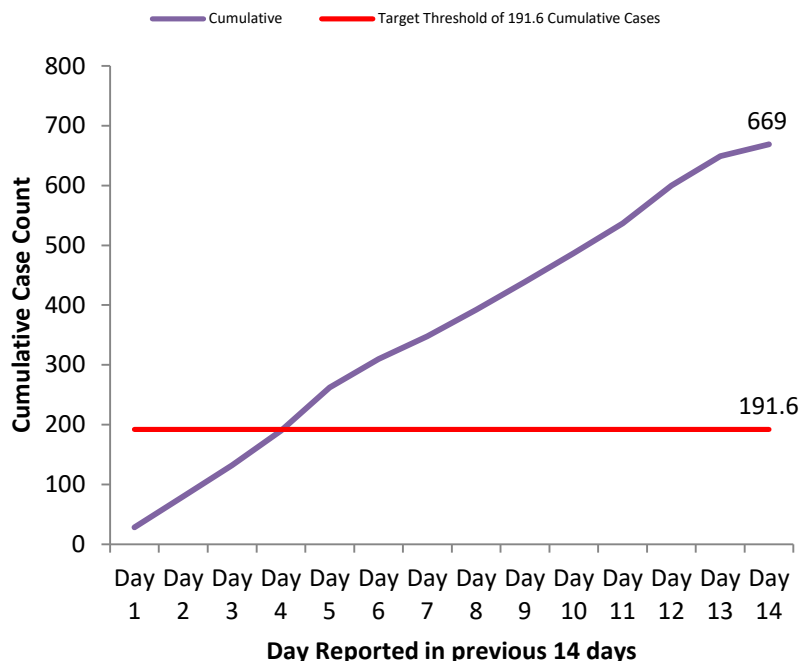


Figure 3. Cases per 100,000 population Reported in 2021

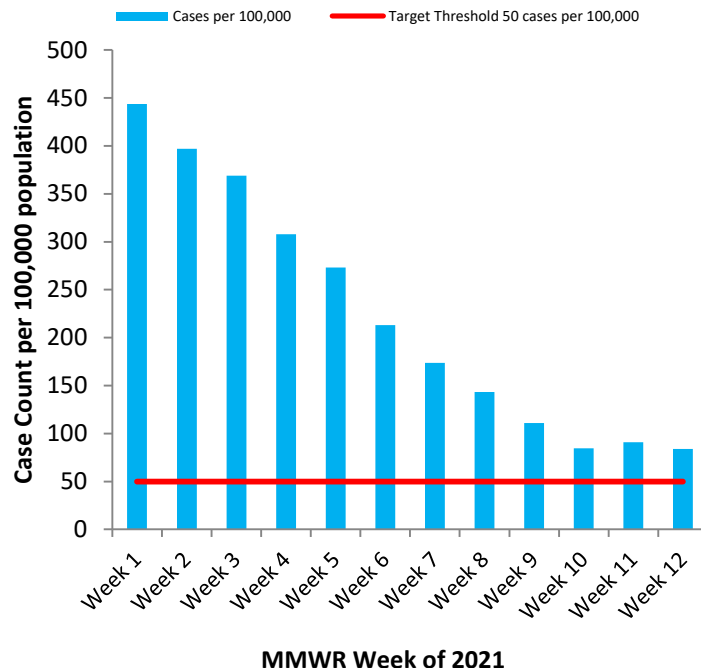


Table 2: Total Reported* Cases by ZIP Code

ZIP Code	Number of Cases	Change from previous week	Incidence per 100,000 thru 03/27	% of Confirmed Cases
45011	6418	↑38 (0.6%) From 6380	9211.1	17.5%
45013	4936	↑35 (0.7%) from 4901	9381.7	13.5%
45044	4853	↑ 29 (0.6%) from 4824	9187.5	13.2%
45069	4717	↑ 66 (1.4%) from 4651	9614.8	12.9%
45014	4690	↑33 (0.7%) from 4657	10679.2	12.8%
45056	3145	↑17 (0.5%) from 3128	11631.8	8.6%
45042	2367	↑ 27 (1.2%) from 2340	8948.6	6.5%
45067	1447	↑9 (0.6%) from 1438	10411.6	4.0%
45050	1118	↑14 (1.3%) from 1104	13079.1	3.1%
45015	975	↑13 (1.4%) from 962	8099.4	2.7%
45241	564	↑8 (1.4%) from 556		1.5%
45053	303	0 from 303	8859.6	0.8%
45064	141	2 (1.4%) from 139		0.4%
45062	54	1 (1.9%) from 53		0.1%
45246	51	0 from 51		0.1%
Cases lacking zip code information or from zip codes with too few cases	848	-	-	2.3%
Butler County (inclusive)	36627	↑ 296 (0.8%) from 36331	9559.8	100%

Zip-codes not calculated have most of their population outside of Butler County. Rate given for comparison by population and will be higher than the actual amount. Zip-codes with too few cases have been removed for privacy concerns.

Red indicates zip codes where the percentage increase is greater than the increase from the previous week.

All figures show reported cases of COVID-19 in Butler County as of 1700 EDT 03/31/2021. Due to delays in reporting, the numbers of confirmed and probable cases on all figures are subject to change between reports and confirmed and probable case counts are likely to increase. *This should not be assumed to be the total disease burden of COVID-19 in Butler County only those that have been laboratory confirmed OR meet ODH probable case criteria AND reported to Public Health.

*Data is provisional – only confirmed or probable COVID-19 cases are included in counts. Report reflects time period since the introduction of SARS-CoV-2 into humans, measured in days. Data accessed from the Ohio Disease Reporting System (ODRS) on 03/31/2021 at 1700 EST.

**Deaths are now reconciled to the Ohio Department of Health's available data to avoid discrepancies between the state and local numbers. ODH's protocol has changed to avoid reconciliation errors and now only includes those deaths that have been reconciled with Vital statistics and may not match what has been reported to the CDC which are provisional numbers. This is a lagging indicator and will be multiple weeks behind.

#Data collected from Ohio Impact-SIIS 03/31/2021

Table 3. New Reports by MMWR Week, 2020

MMWR Week	End of Week	New Cases Reported	New Hospitalizations	New Confirmed Deaths**
11	3/14	6	1	0
12	3/21	10	3	0
13	3/28	11	6	0
14	4/4	44	18	3
15	4/11	50	16	1
16	4/18	43	10	2
17	4/25	55	19	5
18	5/2	99	16	1
19	5/9	131	18	7
20	5/16	134	17	4
21	5/23	184	26	7
22	5/30	111	12	7
23	6/6	113	16	1
24	6/13	89	10	1
25	6/20	115	13	1
26	6/27	167	19	7
27	7/4	198	10	6
28	7/11	285	18	0
29	7/18	260	26	3
30	7/25	269	12	4
31	8/1	274	9	3
32	8/8	242	17	2
33	8/15	264	14	3
34	8/22	265	14	7
35	8/29	545	24	9
36	9/5	770	14	8
37	9/12	498	18	8
38	9/19	368	17	4
39	9/26	380	14	10
40	10/3	505	10	5
41	10/10	590	16	6
42	10/17	683	28	10
43	10/24	770	25	8
44	10/31	910	42	6
45	11/7	1149	48	18
46	11/14	1539	32	13
47	11/21	1807	41	28
48	11/28	2062	50	30
49	12/05	2310	25	28
50	12/12	2701	42	30
51	12/19	2035	52	36
52	12/26	1430	32	37
53	1/2	1703	32	43
1	1/9	1638	27	25
2	1/16	1594	32	23
3	1/23	1442	20	29
4	1/30	1187	23	19
5	2/6	1071	45	13
6	2/13	838	30	14
7	2/20	685	17	10
8	2/27	559	9	8
9	3/06	432	10	3
10	3/13	324	9	1
11	3/20	350	14	1
12	3/27	333	3	0

All figures show reported cases of COVID-19 in Butler County as of 1700 EDT 03/31/2021. Due to delays in reporting, the numbers of confirmed and probable cases on all figures are subject to change between reports and confirmed and probable case counts are likely to increase. *This should not be assumed to be the total disease burden of COVID-19 in Butler County only those that have been laboratory confirmed OR meet ODH probable case criteria AND reported to Public Health.

*Data is provisional – only confirmed or probable COVID-19 cases are included in counts. Report reflects time period since the introduction of SARS-CoV-2 into humans, measured in days. Data accessed from the Ohio Disease Reporting System (ODRS) on 03/31/2021 at 1700 EST.

**Deaths are now reconciled to the Ohio Department of Health's available data to avoid discrepancies between the state and local numbers. ODH's protocol has changed to avoid reconciliation errors and now only includes those deaths that have been reconciled with Vital statistics and may not match what has been reported to the CDC which are provisional numbers. This is a lagging indicator and will be multiple weeks behind.

#Data collected from Ohio Impact-SIIS 03/31/2021

Figure 4. New Hospitalizations of Butler County Residents by Admission Date, 2020-21*

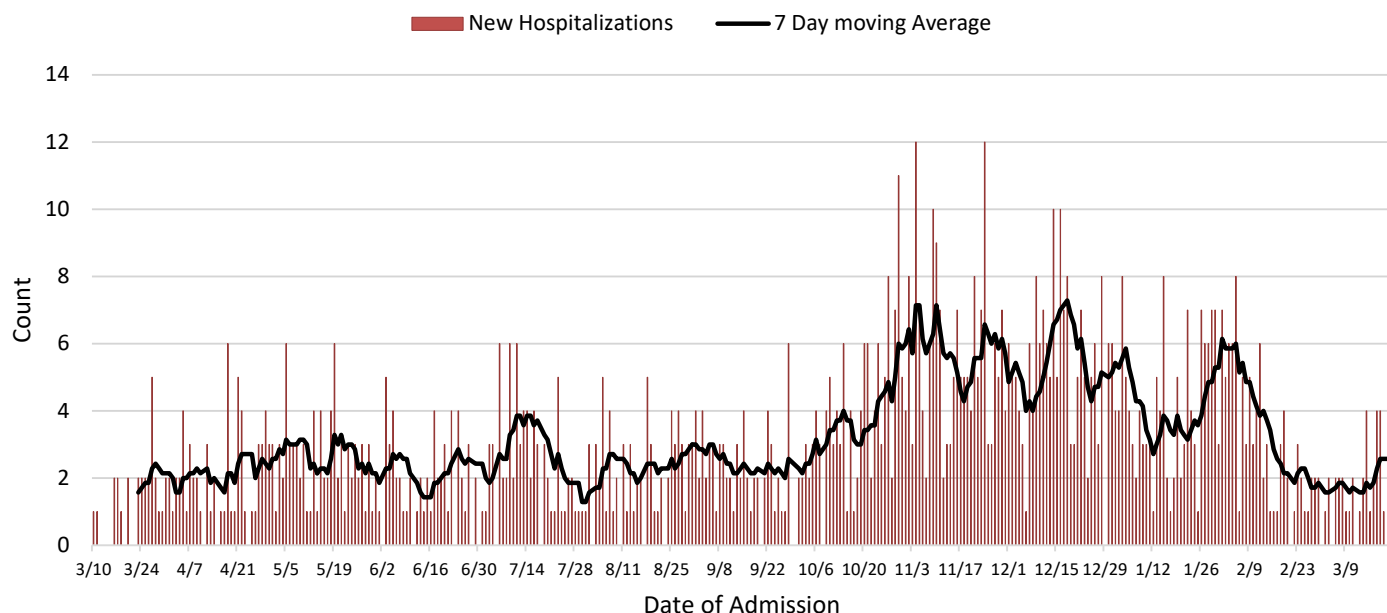
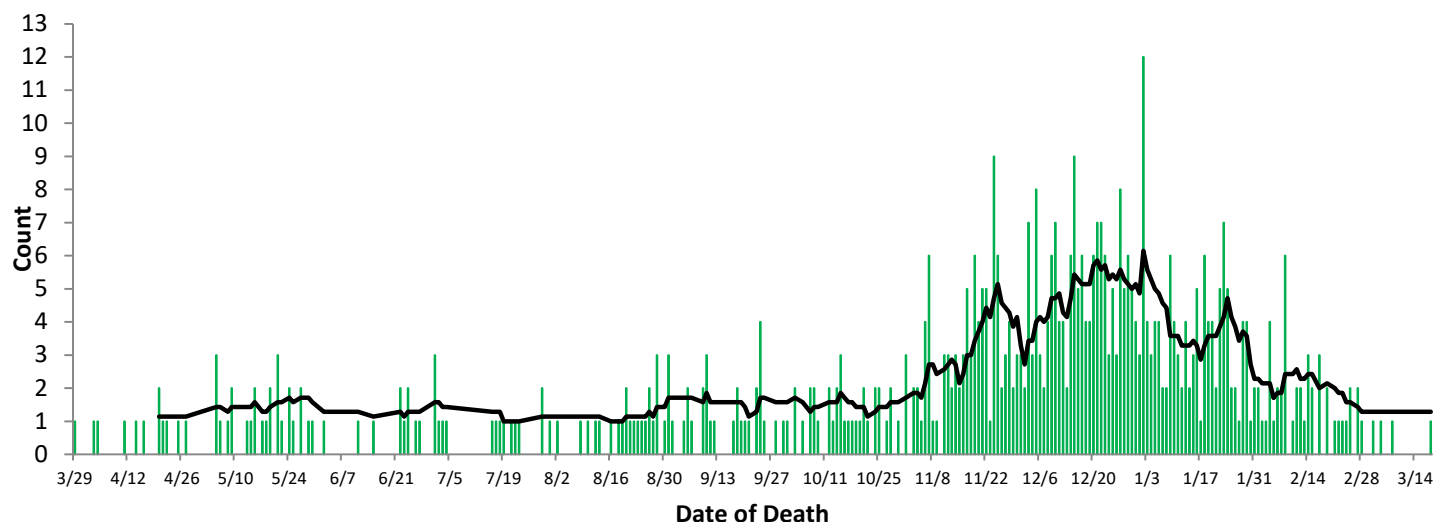


Figure 5. Confirmed COVID-19 Deaths by date of death, 2020-21**



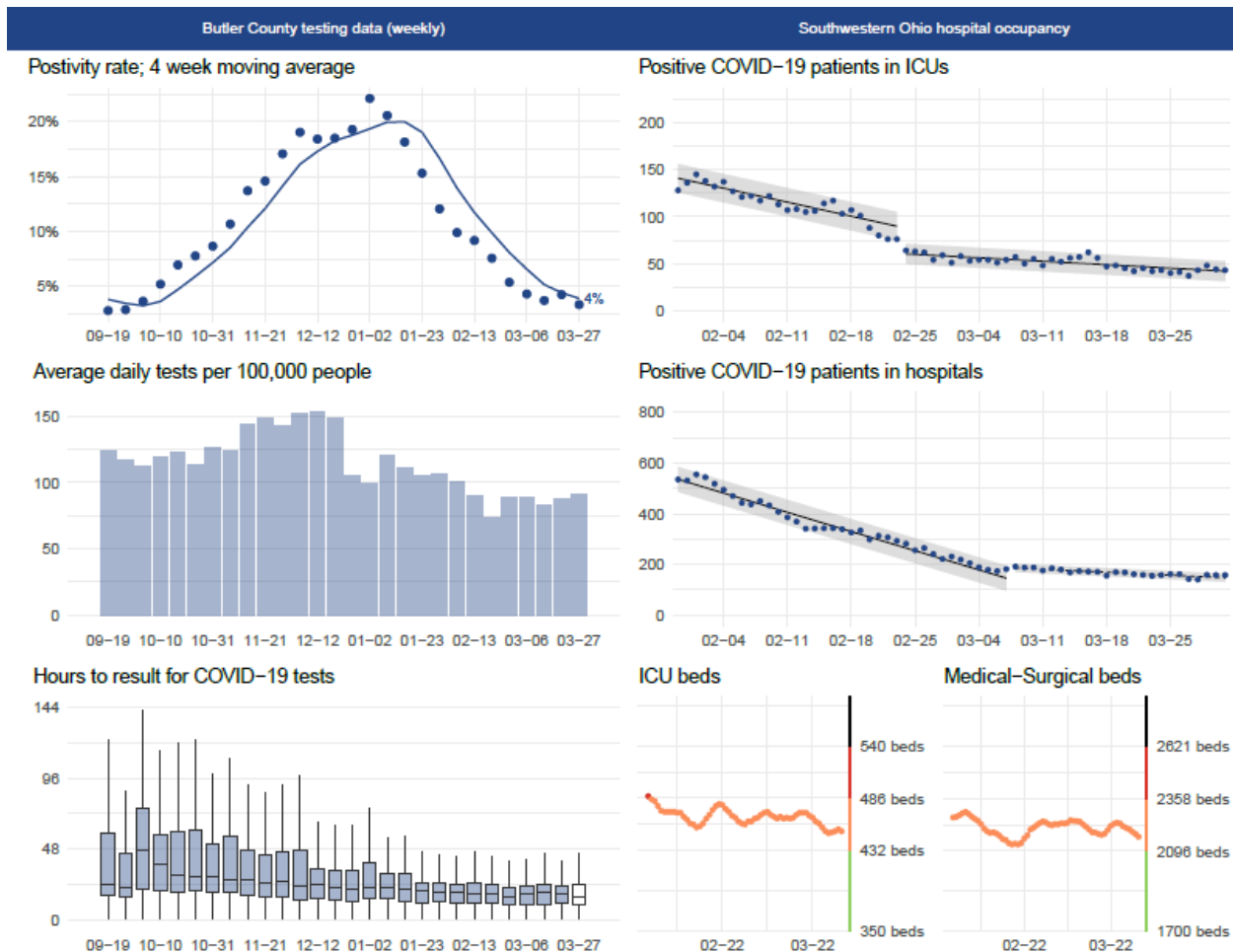
All figures show reported cases of COVID-19 in Butler County as of 1700 EDT 03/31/2021. Due to delays in reporting, the numbers of confirmed and probable cases on all figures are subject to change between reports and confirmed and probable case counts are likely to increase. *This should not be assumed to be the total disease burden of COVID-19 in Butler County only those that have been laboratory confirmed OR meet ODH probable case criteria AND reported to Public Health.

*Data is provisional – only confirmed or probable COVID-19 cases are included in counts. Report reflects time period since the introduction of SARS-CoV-2 into humans, measured in days. Data accessed from the Ohio Disease Reporting System (ODRS) on 03/31/2021 at 1700 EST.

**Deaths are now reconciled to the Ohio Department of Health's available data to avoid discrepancies between the state and local numbers. ODH's protocol has changed to avoid reconciliation errors and now only includes those deaths that have been reconciled with Vital statistics and may not match what has been reported to the CDC which are provisional numbers. This is a lagging indicator and will be multiple weeks behind.

#Data collected from Ohio Impact-SIIS 03/31/2021

Figure 6. Butler County Data analysis performed by Cincinnati Children's Hospital



Number of Vaccinations administered by Butler County General Health District through 03/27/2021: **16,706 #**
 Number of Vaccine Series started by all Partners in Butler County through 03/27/2021: **95,079**
 Number of Vaccine Series completed by all Partners in Butler County through 03/27/2021: **51,490**

All figures show reported cases of COVID-19 in Butler County as of 1700 EDT 03/31/2021. Due to delays in reporting, the numbers of confirmed and probable cases on all figures are subject to change between reports and confirmed and probable case counts are likely to increase. *This should not be assumed to be the total disease burden of COVID-19 in Butler County only those that have been laboratory confirmed OR meet ODH probable case criteria AND reported to Public Health.

*Data is provisional – only confirmed or probable COVID-19 cases are included in counts. Report reflects time period since the introduction of SARS-CoV-2 into humans, measured in days. Data accessed from the Ohio Disease Reporting System (ODRS) on 03/31/2021 at 1700 EST.

**Deaths are now reconciled to the Ohio Department of Health's available data to avoid discrepancies between the state and local numbers. ODH's protocol has changed to avoid reconciliation errors and now only includes those deaths that have been reconciled with Vital statistics and may not match what has been reported to the CDC which are provisional numbers. This is a lagging indicator and will be multiple weeks behind.

#Data collected from Ohio Impact-SIIS 03/31/2021