

Butler County General Health District COVID-19 Update (3/13/2021)

Confirmed and Probable COVID-19 Cases Reported to Butler County*

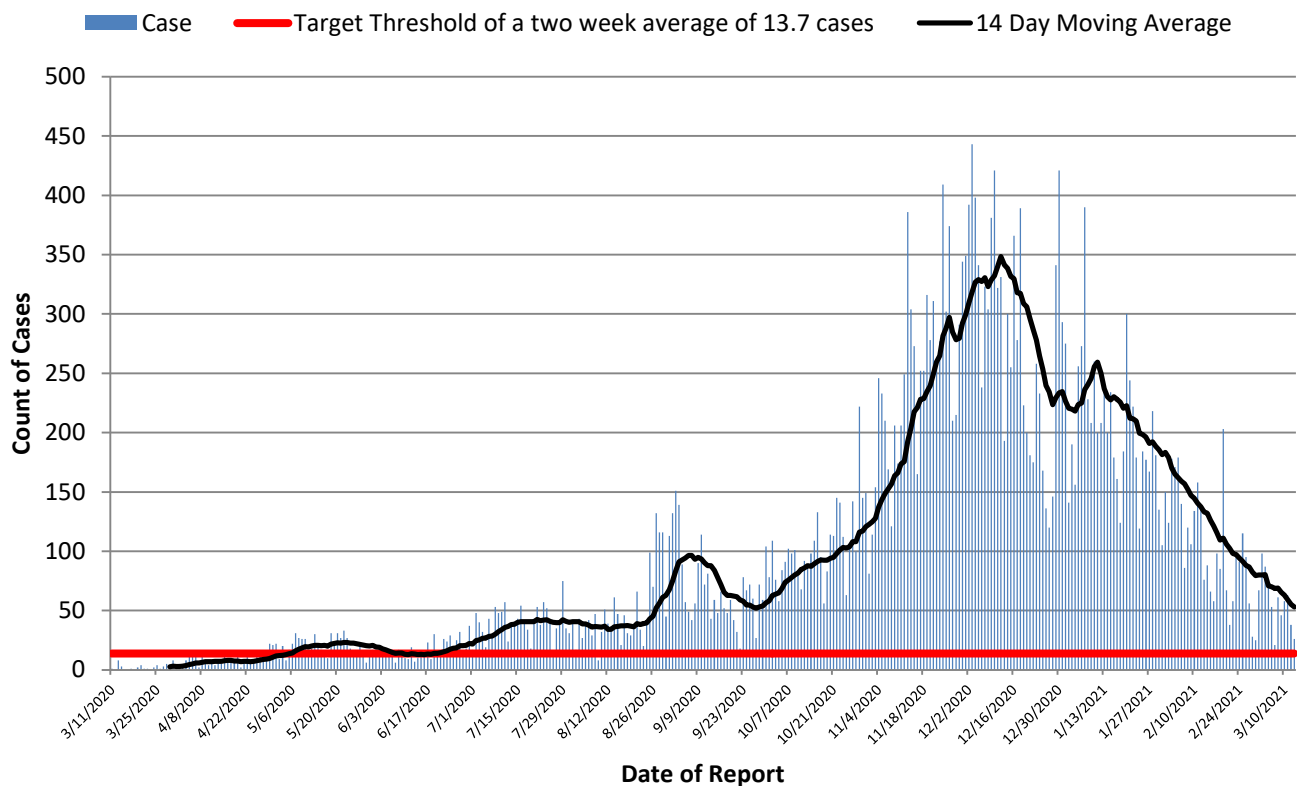
Butler County Residents, 2020

Total # of Cases (03/13):	35,954*
ODH verified Deaths (03/13):	544**
Hospitalizations (03/13):	1,117
ICU admissions (03/13):	112
First Case Reported:	3/11/2020
Last Case Reported (so far):	3/13/2021
Confirmed Cases:	32,549
Probable Cases:	3,405
Age Range:	<1-103
Median Age:	40
Mean Age:	41.2
Incidence:	9,384 per 100,000
Prevalence (thru 03/13):	9.4% of BC population

In the following tables and figures, all threshold values are equivalent.

Table 1: Indicators for Reopening for Butler County		
Indicator	Last 2 Weeks	Governor DeWine's Target
Incidence per 100,000 population	193.9 per 100,000	50 per 100,000
Cumulative Case Count	743 per 14 days	191.6 per 14 days
Daily Average of new cases	53.1 per day through 14 days	13.7 per day through 14 days

Figure 1. Reported Cases of COVID-19 by Date of Report*



All figures show reported cases of COVID-19 in Butler County as of 1700 EDT 03/13/2021. Due to delays in reporting, the numbers of confirmed and probable cases on all figures are subject to change between reports and confirmed and probable case counts are likely to increase. *This should not be assumed to be the total disease burden of COVID-19 in Butler County only those that have been laboratory confirmed OR meet ODH probable case criteria AND reported to Public Health.

*Data is provisional – only confirmed or probable COVID-19 cases are included in counts. Report reflects time period since the introduction of SARS-CoV-2 into humans, measured in days. Data accessed from the Ohio Disease Reporting System (ODRS) on 03/13/2021 at 1700 EST.

**Deaths are now reconciled to the Ohio Department of Health's available data to avoid discrepancies between the state and local numbers. ODH's protocol has changed to avoid reconciliation errors and now only includes those deaths that have been reconciled with Vital statistics and may not match what has been reported to the CDC which are provisional numbers. This is a lagging indicator.

#Data collected from Ohio Impact-SIIS 03/16/2021

Figure 2. Cumulative Count of Cases of COVID-19 Reported by day previous two weeks

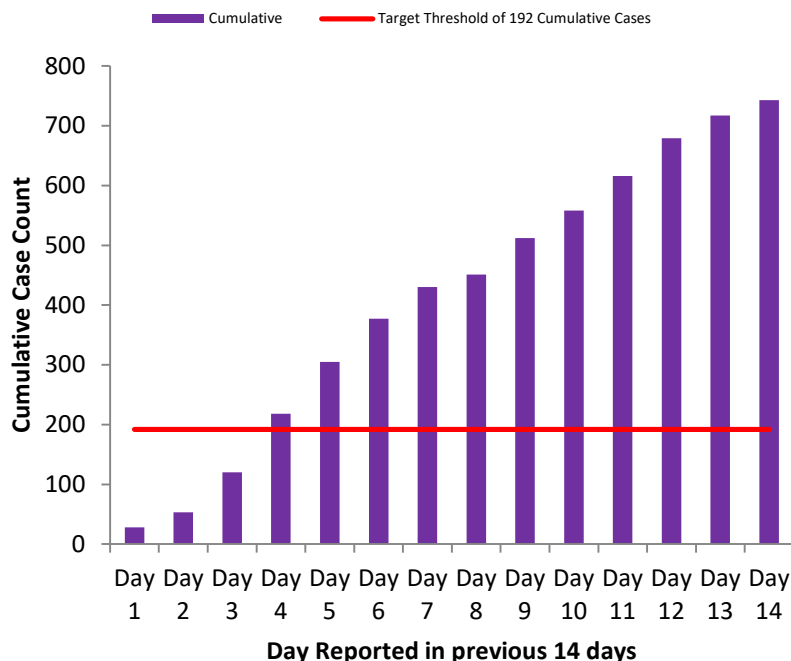


Figure 3. Cases per 100,000 population Reported in 2021

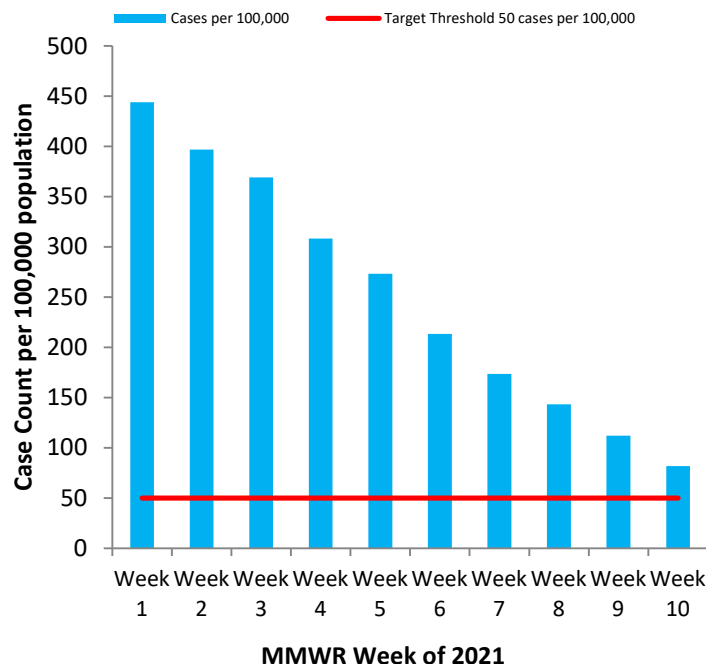


Table 2: Total Reported* Cases by ZIP Code

ZIP Code	Number of Cases	Change from previous week	Rate per 100,000	% of Confirmed Cases
45011	6323	↑39 (0.6%) From 6284	9,075	17.6%
45013	4849	↑31 (0.6%) from 4818	9,216	13.5%
45044	4760	↑ 39 (0.8%) from 4721	9,011	13.2%
45014	4621	↑ 29 (0.6%) from 4592	10,522	12.9%
45069	4584	↑35 (0.8%) from 4549	9,344	12.7%
45056	3092	↑24 (0.8%) from 3068	11,436	8.6%
45042	2321	↑ 13 (0.6%) from 2308	8,775	6.5%
45067	1433	↑4 (0.3%) from 1429	10,311	4.0%
45050	1090	↑17 (1.6%) from 1073	12,752	3.0%
45015	945	↑13 (1.4%) from 932	7,850	2.6%
45241	550	↑8 (1.5%) from 542		1.5%
45053	301	↑ 3 (1.0%) from 298	8,801	0.8%
45064	139	0 from 139		0.4%
45062	53	0 from 53		0.1%
45246	51	0 from 51		0.1%
Cases lacking zip code information or from zip codes with too few cases	893	-	-	2.5%
Butler County (inclusive)	35,954	↑ 256 (.01%) from 35,698	9,384	100%

Zip-codes not calculated have most of their population outside of Butler County. Rate given for comparison by population and will be higher than the actual amount. Zip-codes with too few cases have been removed for privacy concerns.

Red indicates zip codes where the percentage increase is greater than the increase from the previous week.

All figures show reported cases of COVID-19 in Butler County as of 1700 EDT 03/13/2021. Due to delays in reporting, the numbers of confirmed and probable cases on all figures are subject to change between reports and confirmed and probable case counts are likely to increase. *This should not be assumed to be the total disease burden of COVID-19 in Butler County only those that have been laboratory confirmed OR meet ODH probable case criteria AND reported to Public Health.

*Data is provisional – only confirmed or probable COVID-19 cases are included in counts. Report reflects time period since the introduction of SARS-CoV-2 into humans, measured in days. Data accessed from the Ohio Disease Reporting System (ODRS) on 03/13/2021 at 1700 EST.

**Deaths are now reconciled to the Ohio Department of Health's available data to avoid discrepancies between the state and local numbers. ODH's protocol has changed to avoid reconciliation errors and now only includes those deaths that have been reconciled with Vital statistics and may not match what has been reported to the CDC which are provisional numbers. This is a lagging indicator.

#Data collected from Ohio Impact-SIIS 03/16/2021

Table 3. New Reports by MMWR Week, 2020

MMWR Week	End of Week	New Cases Reported	New Hospitalizations	New Confirmed Deaths
11	3/14	6	1	0
12	3/21	10	3	0
13	3/28	11	6	0
14	4/4	44	18	3
15	4/11	50	16	1
16	4/18	43	10	2
17	4/25	55	19	5
18	5/2	99	16	1
19	5/9	131	18	7
20	5/16	134	17	4
21	5/23	184	26	7
22	5/30	111	12	7
23	6/6	113	16	1
24	6/13	89	10	1
25	6/20	115	13	1
26	6/27	167	19	7
27	7/4	198	10	6
28	7/11	285	18	0
29	7/18	260	26	3
30	7/25	269	12	4
31	8/1	274	9	3
32	8/8	242	17	2
33	8/15	264	14	3
34	8/22	265	14	7
35	8/29	545	24	9
36	9/5	770	14	8
37	9/12	498	18	8
38	9/19	368	17	4
39	9/26	380	14	10
40	10/3	505	10	5
41	10/10	590	16	6
42	10/17	684	28	10
43	10/24	770	25	8
44	10/31	910	42	6
45	11/7	1149	48	18
46	11/14	1539	32	13
47	11/21	1807	41	28
48	11/28	2061	49	30
49	12/05	2310	25	28
50	12/12	2702	41	30
51	12/19	2035	52	36
52	12/26	1428	32	37
53	1/2	1703	32	42
1	1/9	1639	27	25
2	1/16	1594	32	22
3	1/23	1443	20	28
4	1/30	1188	23	18
5	2/6	1072	45	11
6	2/13	839	28	13
7	2/20	685	17	9
8	2/27	559	9	6
9	3/06	436	10	1
10	3/13	326	6	0

All figures show reported cases of COVID-19 in Butler County as of 1700 EDT 03/13/2021. Due to delays in reporting, the numbers of confirmed and probable cases on all figures are subject to change between reports and confirmed and probable case counts are likely to increase. *This should not be assumed to be the total disease burden of COVID-19 in Butler County only those that have been laboratory confirmed OR meet ODH probable case criteria AND reported to Public Health.

*Data is provisional – only confirmed or probable COVID-19 cases are included in counts. Report reflects time period since the introduction of SARS-CoV-2 into humans, measured in days. Data accessed from the Ohio Disease Reporting System (ODRS) on 03/13/2021 at 1700 EST.

**Deaths are now reconciled to the Ohio Department of Health's available data to avoid discrepancies between the state and local numbers. ODH's protocol has changed to avoid reconciliation errors and now only includes those deaths that have been reconciled with Vital statistics and may not match what has been reported to the CDC which are provisional numbers. This is a lagging indicator.

#Data collected from Ohio Impact-SIIS 03/16/2021

Figure 4. New Hospitalizations of Butler County Residents by Admission Date, 2020-21*

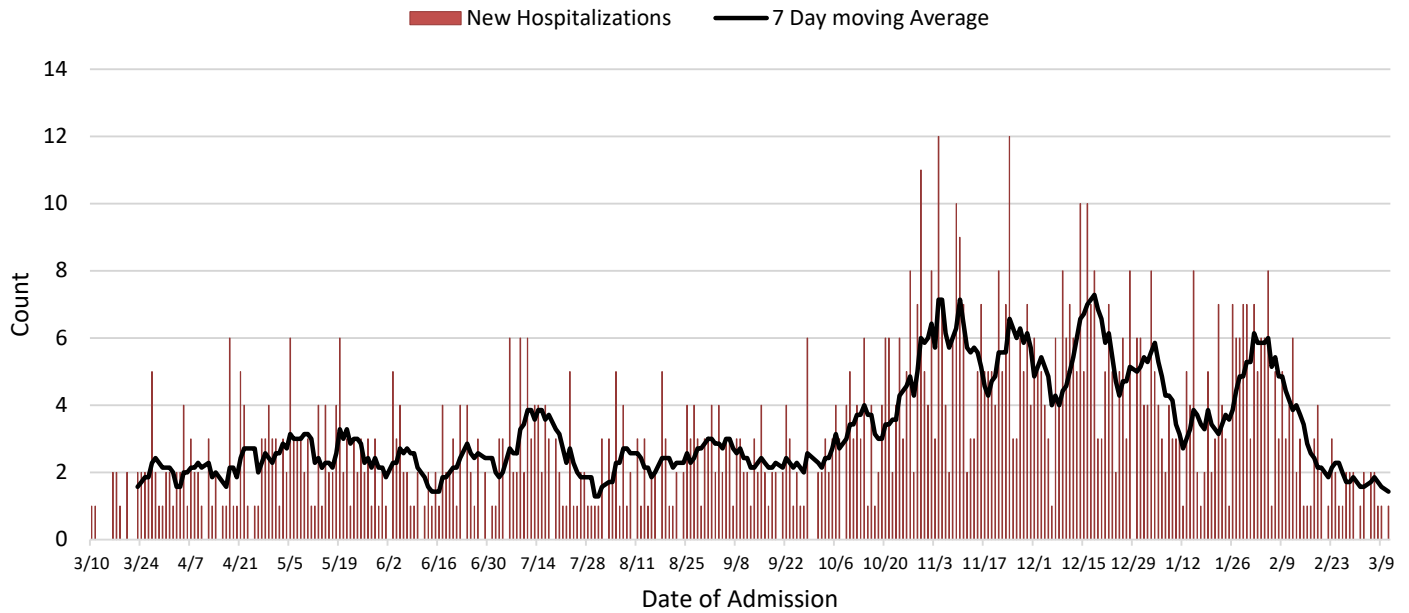
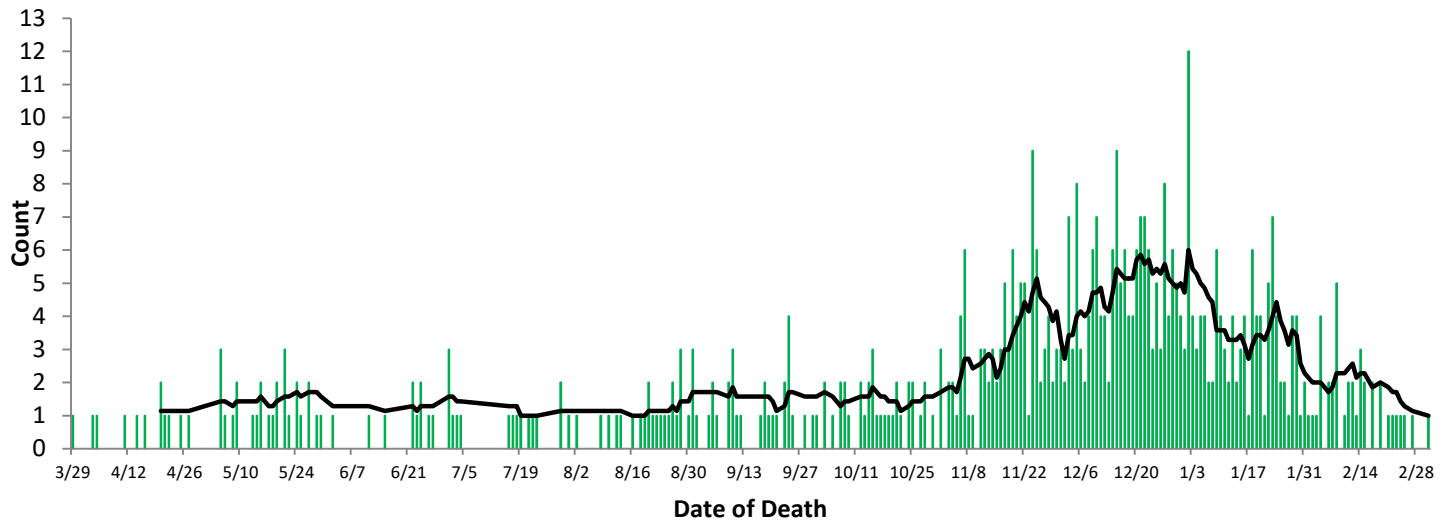


Figure 5. Confirmed COVID-19 Deaths by date of death, 2020-21**



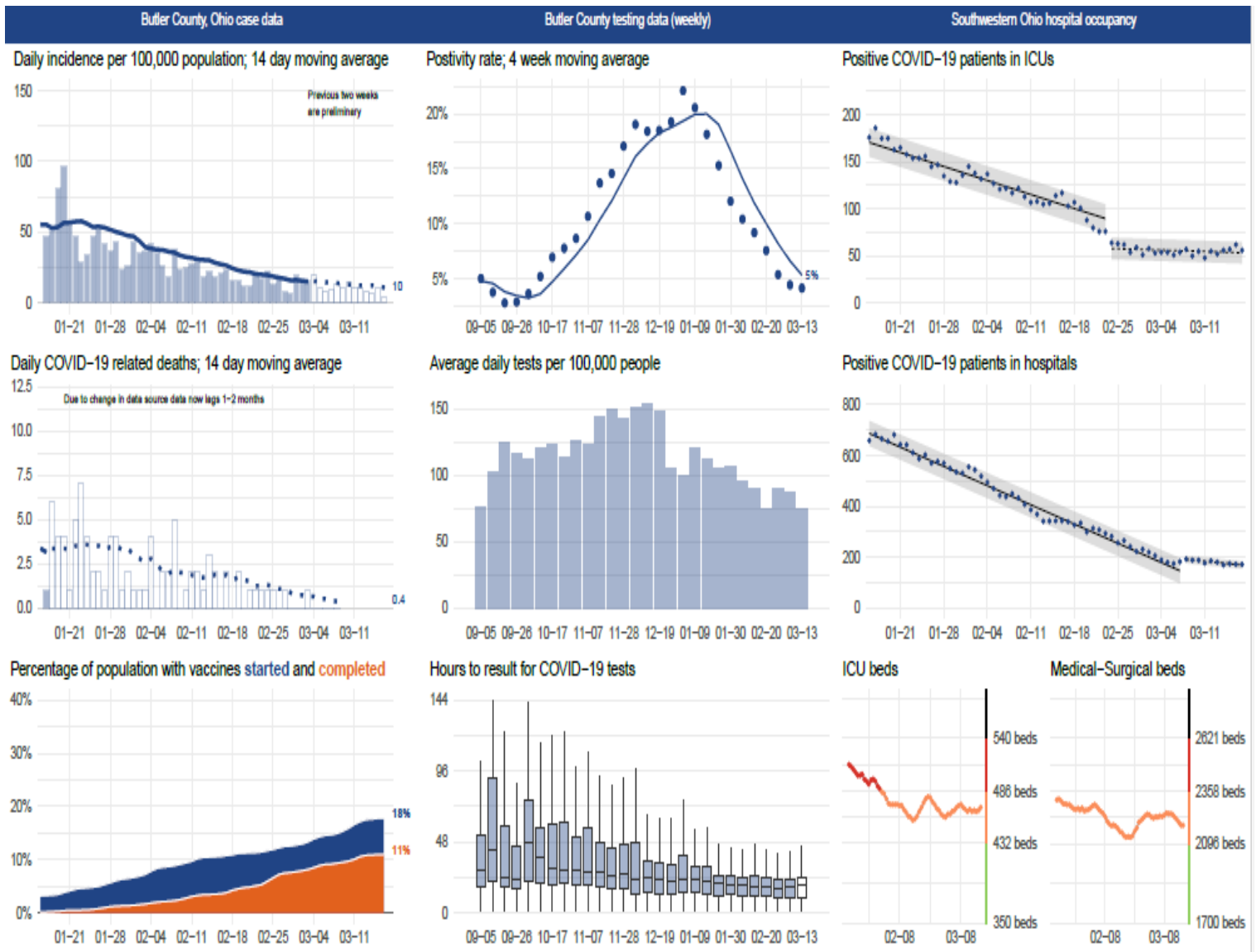
All figures show reported cases of COVID-19 in Butler County as of 1700 EDT 03/13/2021. Due to delays in reporting, the numbers of confirmed and probable cases on all figures are subject to change between reports and confirmed and probable case counts are likely to increase. *This should not be assumed to be the total disease burden of COVID-19 in Butler County only those that have been laboratory confirmed OR meet ODH probable case criteria AND reported to Public Health.

*Data is provisional – only confirmed or probable COVID-19 cases are included in counts. Report reflects time period since the introduction of SARS-CoV-2 into humans, measured in days. Data accessed from the Ohio Disease Reporting System (ODRS) on 03/13/2021 at 1700 EST.

**Deaths are now reconciled to the Ohio Department of Health's available data to avoid discrepancies between the state and local numbers. ODH's protocol has changed to avoid reconciliation errors and now only includes those deaths that have been reconciled with Vital statistics and may not match what has been reported to the CDC which are provisional numbers. This is a lagging indicator.

#Data collected from Ohio Impact-SIIS 03/16/2021

Figure 6. Butler County Data analysis performed by Cincinnati Children's Hospital



Number of Vaccinations administered by Butler County General Health District through 03/13/2021: **10,808**#
 Number of Vaccine Series started by all Partners in Butler County through 03/13/2021: **70,804**
 Number of Vaccine Series completed by all Partners in Butler County through 03/13/2021: **42,243**

All figures show reported cases of COVID-19 in Butler County as of 1700 EDT 03/13/2021. Due to delays in reporting, the numbers of confirmed and probable cases on all figures are subject to change between reports and confirmed and probable case counts are likely to increase. *This should not be assumed to be the total disease burden of COVID-19 in Butler County only those that have been laboratory confirmed OR meet ODH probable case criteria AND reported to Public Health.

*Data is provisional – only confirmed or probable COVID-19 cases are included in counts. Report reflects time period since the introduction of SARS-CoV-2 into humans, measured in days. Data accessed from the Ohio Disease Reporting System (ODRS) on 03/13/2021 at 1700 EST.

**Deaths are now reconciled to the Ohio Department of Health's available data to avoid discrepancies between the state and local numbers. ODH's protocol has changed to avoid reconciliation errors and now only includes those deaths that have been reconciled with Vital statistics and may not match what has been reported to the CDC which are provisional numbers. This is a lagging indicator.

#Data collected from Ohio Impact-SIIS 03/16/2021